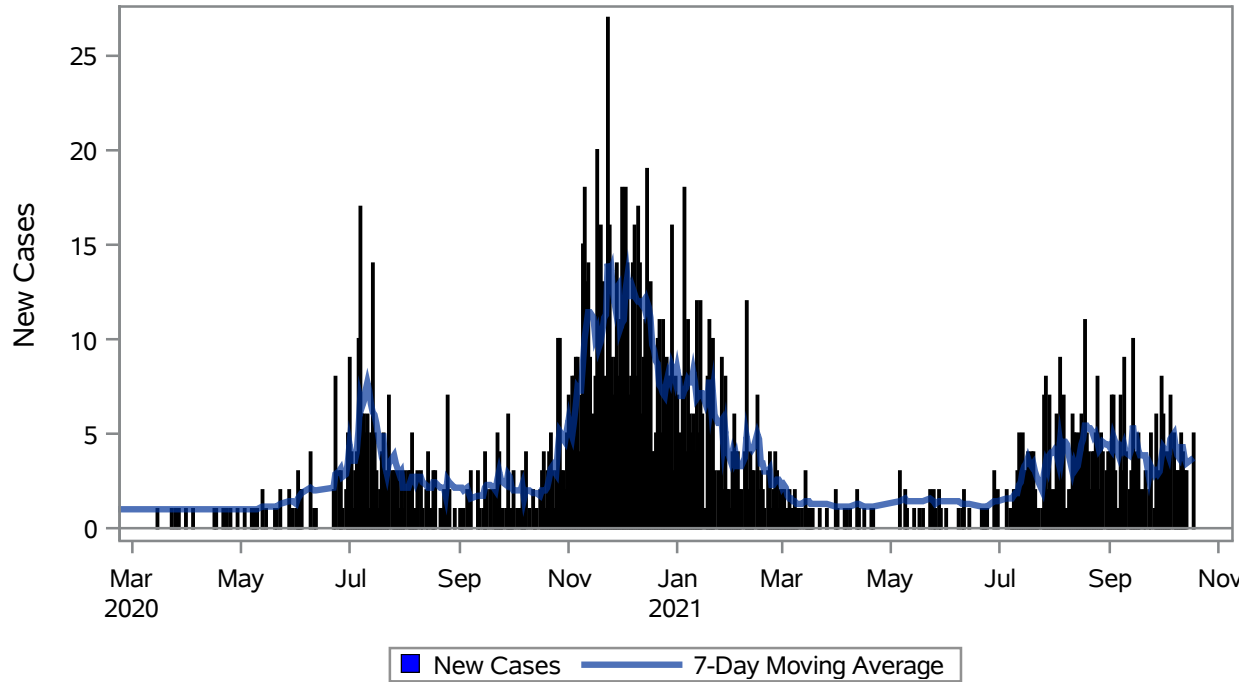


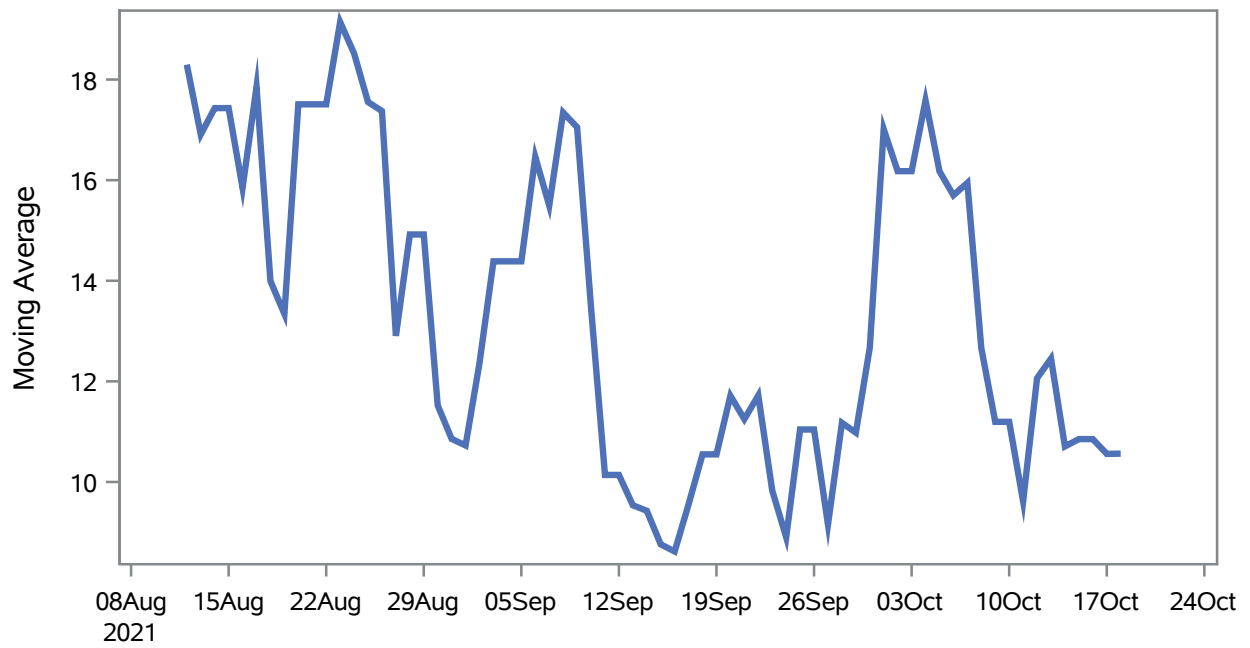
COVID19 Cases for Mesquite, 7-Day Moving Average



Investigations are ongoing; data are subject to change.
Reporting through 20OCT2021

Mesquite zip codes include 89027,89034. The U.S. Census Bureau data uses Zip Code Tabulation Area (ZCTA), which does not list 89034 but has incorporated areas of 89034 within 89027 through the American Community Survey (ACS) 5-Year Estimates.

Percent of People Receiving COVID-19 Viral Tests Who Have Positive Results in Mesquite



Investigations are ongoing; data are subject to change.

Reporting through 20OCT2021

Mesquite zip codes include 89027,89034. The U.S. Census Bureau data uses Zip Code Tabulation Area (ZCTA), which does not list 89034 but has incorporated areas of 89034 within 89027 through the American Community Survey (ACS) 5-Year Estimates.

Table 1: Age and COVID19 in Mesquite

| Case Status | Age Categories | N | % | Population | Rate per 100,000 |
|------------------|----------------|-----|------|------------|------------------|
| Cases | Aged 4 or less | 17 | 1.0 | 702 | 2421.7 |
| | Aged 5 to 17 | 128 | 7.6 | 2,217 | 5773.6 |
| | Aged 18 to 24 | 168 | 10.0 | 938 | 17910 |
| | Aged 25 to 49 | 476 | 28.4 | 3,386 | 14058 |
| | Aged 50 to 64 | 365 | 21.8 | 3,371 | 10828 |
| | Aged 64+ | 524 | 31.2 | 7,290 | 7187.9 |
| Hospitalizations | Aged 4 or less | 1 | 0.9 | 702 | -- |
| | Aged 5 to 17 | 1 | 0.9 | 2,217 | -- |
| | Aged 25 to 49 | 12 | 11.2 | 3,386 | 354.40 |
| | Aged 50 to 64 | 21 | 19.6 | 3,371 | 622.96 |
| | Aged 64+ | 72 | 67.3 | 7,290 | 987.65 |
| Deaths | Aged 25 to 49 | 1 | 2.7 | 3,386 | -- |
| | Aged 50 to 64 | 2 | 5.4 | 3,371 | -- |
| | Aged 64+ | 34 | 91.9 | 7,290 | 466.39 |

Note1: Population data source for calculating rate estimates: U.S. Census Bureau, ACS 5-year estimate.

Note2: Rates for categories with fewer than 12 cases are suppressed due to high relative standard error.

Note3: Hospitalizations are regardless of deceased status; Deaths are regardless of hospitalization status

**Investigations are ongoing; data are subject to change.
Reporting through 20OCT2021**

Mesquite zip codes include 89027,89034. The U.S. Census Bureau data uses Zip Code Tabulation Area (ZCTA), which does not list 89034 but has incorporated areas of 89034 within 89027 through the American Community Survey (ACS) 5-Year Estimates.

Table 2: Race/Ethnicity and COVID19 in Mesquite

| Case Status | Race Ethnicity Categories | N | % | Population | Rate per 100,000 |
|------------------|----------------------------------|-----|------|------------|------------------|
| Cases | Hispanic | 509 | 30.3 | 3,738 | 13617 |
| | White | 846 | 50.4 | 13,120 | 6448.2 |
| | Black | -- | -- | 148 | -- |
| | Asian | -- | -- | 486 | 6172.8 |
| | American Indian/Alaskan Native | -- | -- | 95 | -- |
| | Multi-race | -- | -- | 240 | -- |
| | Native Hawaiian/Pacific Islander | -- | -- | 30 | -- |
| | Unknown | 268 | 16.0 | . | . |
| Hospitalizations | Hispanic | 23 | 21.5 | 3,738 | 615.30 |
| | White | 70 | 65.4 | 13,120 | 533.54 |
| | Black | -- | -- | 148 | -- |
| | Asian | -- | -- | 486 | -- |
| | American Indian/Alaskan Native | -- | -- | 95 | -- |
| | Multi-race | -- | -- | 240 | -- |
| | Native Hawaiian/Pacific Islander | -- | -- | 30 | -- |
| | Unknown | 6 | 5.6 | . | . |
| Deaths | Hispanic | 2 | 5.4 | 3,738 | -- |
| | White | 33 | 89.2 | 13,120 | 251.52 |
| | Asian | -- | -- | 486 | -- |
| | Native Hawaiian/Pacific Islander | -- | -- | 30 | -- |

Note1: Population data source for calculating rate estimates: U.S. Census Bureau, ACS 5-year estimate.

Note2: Rates for categories with fewer than 12 cases are suppressed due to high relative standard error. Counts for categories with population less than 500 are suppressed for confidentiality.

Note3: Due to suppression, the total counts per case status may not equal expected totals.

Note4: Hospitalizations are regardless of deceased status; Deaths are regardless of hospitalization status

**Investigations are ongoing; data are subject to change.
Reporting through 20OCT2021**

Mesquite zip codes include 89027,89034. The U.S. Census Bureau data uses Zip Code Tabulation Area (ZCTA), which does not list 89034 but has incorporated areas of 89034 within 89027 through the American Community Survey (ACS) 5-Year Estimates.

Table 3: Birth Sex and COVID19 in Mesquite

| Case Status | Birth Sex Categories | N | % | Population | Rate per 100,000 |
|------------------|----------------------|-----|------|------------|------------------|
| Cases | Female | 903 | 53.8 | 9,111 | 9911.1 |
| | Male | 762 | 45.4 | 8,793 | 8666.0 |
| | Unknown | 13 | 0.8 | . | . |
| Hospitalizations | Female | 50 | 46.7 | 9,111 | 548.79 |
| | Male | 57 | 53.3 | 8,793 | 648.24 |
| Deaths | Female | 13 | 35.1 | 9,111 | 142.68 |
| | Male | 24 | 64.9 | 8,793 | 272.94 |

Note1: Population data source for calculating rate estimates: U.S. Census Bureau, ACS 5-year estimate.

Note2: Rates for categories with fewer than 12 cases are suppressed due to high relative standard error. Counts for categories with population less than 500 are suppressed for confidentiality.

Note3: Hospitalizations are regardless of deceased status; Deaths are regardless of hospitalization status

**Investigations are ongoing; data are subject to change.
Reporting through 20OCT2021**

Mesquite zip codes include 89027,89034. The U.S. Census Bureau data uses Zip Code Tabulation Area (ZCTA), which does not list 89034 but has incorporated areas of 89034 within 89027 through the American Community Survey (ACS) 5-Year Estimates.