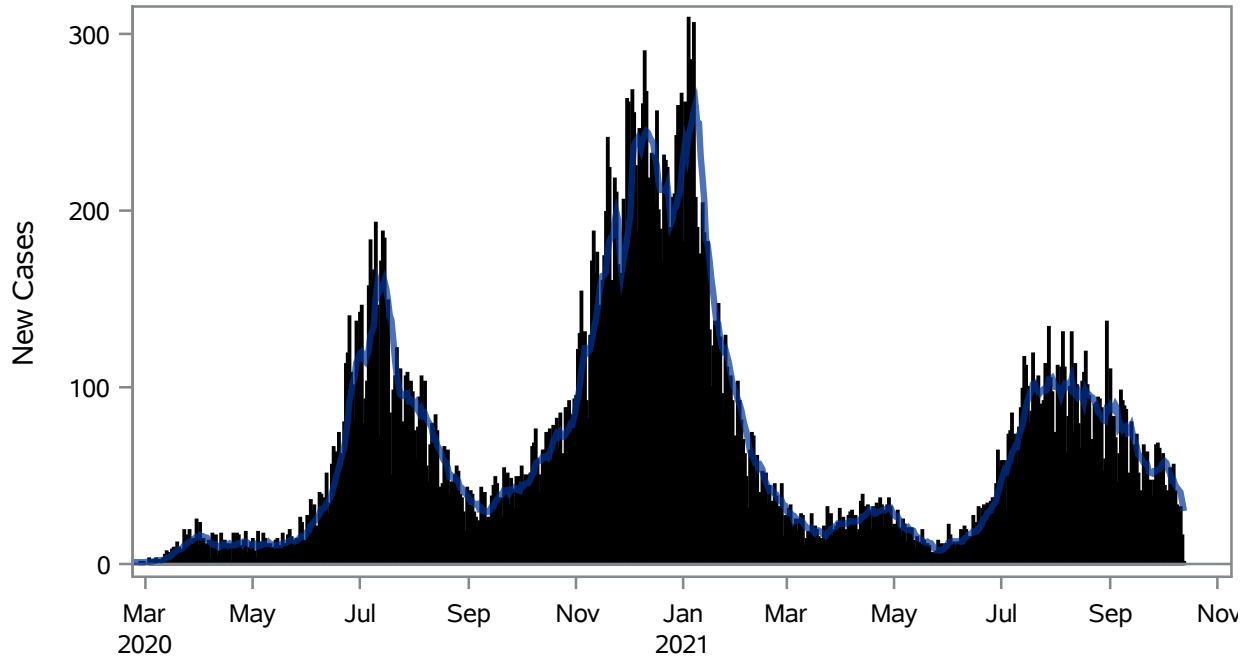


COVID19 Cases for North Las Vegas, 7-Day Moving Average



■ New Cases — 7-Day Moving Average

Investigations are ongoing; data are subject to change.

Reporting through 13OCT2021

North Las Vegas zip codes include 89030, 89031, 89032, 89033, 89036, 89081, 89084, 89085, 89086, 89087.

Table 1: New COVID19 Cases and 7-Day Moving Average in North Las Vegas, Previous Two Weeks

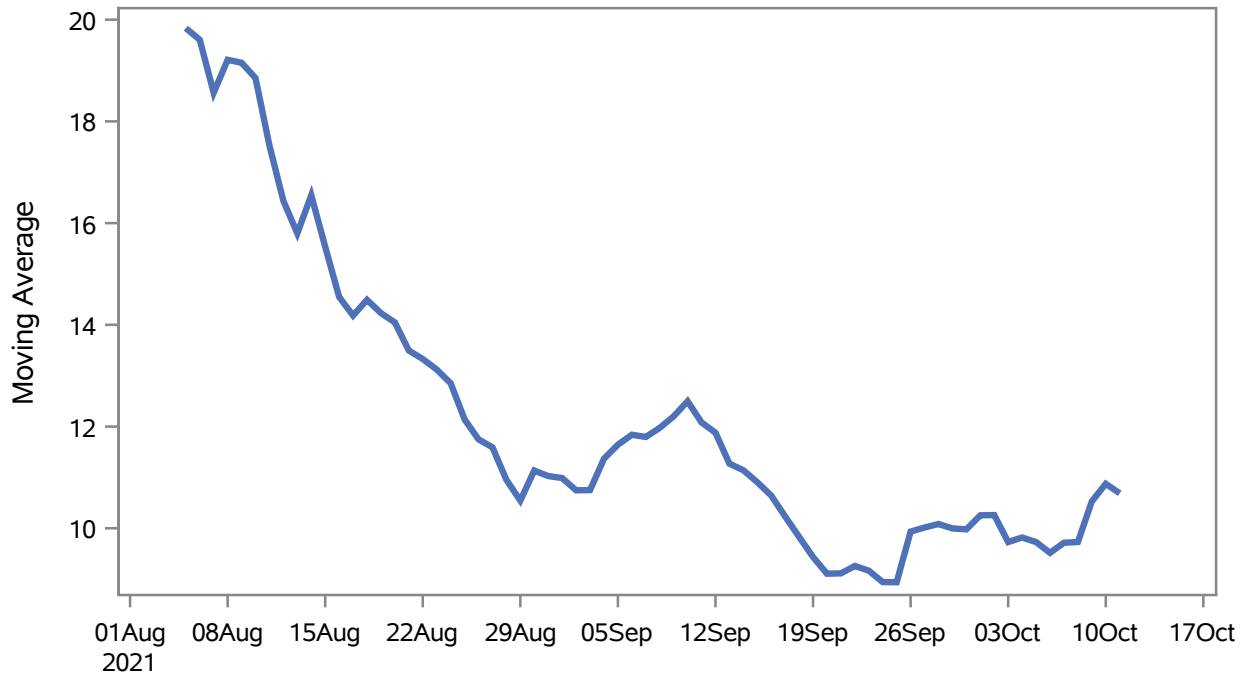
Date (Daily)	New Cases	7-Day Moving Average
30SEP2021	54	55.14
01OCT2021	62	57.29
02OCT2021	44	58.14
03OCT2021	40	57.14
04OCT2021	41	53.43
05OCT2021	54	51.43
06OCT2021	37	47.43
07OCT2021	56	47.71
08OCT2021	41	44.71
09OCT2021	33	43.14
10OCT2021	31	41.86
11OCT2021	32	40.57

Note1: Event Date is calculated as follows based on completed information:
1) Disease onset date 2) Disease diagnosis date 3) Lab result collection date 4) Report date to SNHD.

**Investigations are ongoing; data are subject to change.
Reporting through 13OCT2021**

North Las Vegas zip codes include 89030, 89031, 89032, 89033, 89036, 89081, 89084, 89085, 89086, 89087.

Percent of People Receiving COVID-19 Viral Tests Who Have Positive Results in North Las Vegas



Investigations are ongoing; data are subject to change.

Reporting through 13OCT2021

North Las Vegas zip codes include 89030, 89031, 89032, 89033, 89036, 89081, 89084, 89085, 89086, 89087.

Table 2: Percent of People Receiving COVID-19 Viral Tests Who Have Positive Results in North Las Vegas

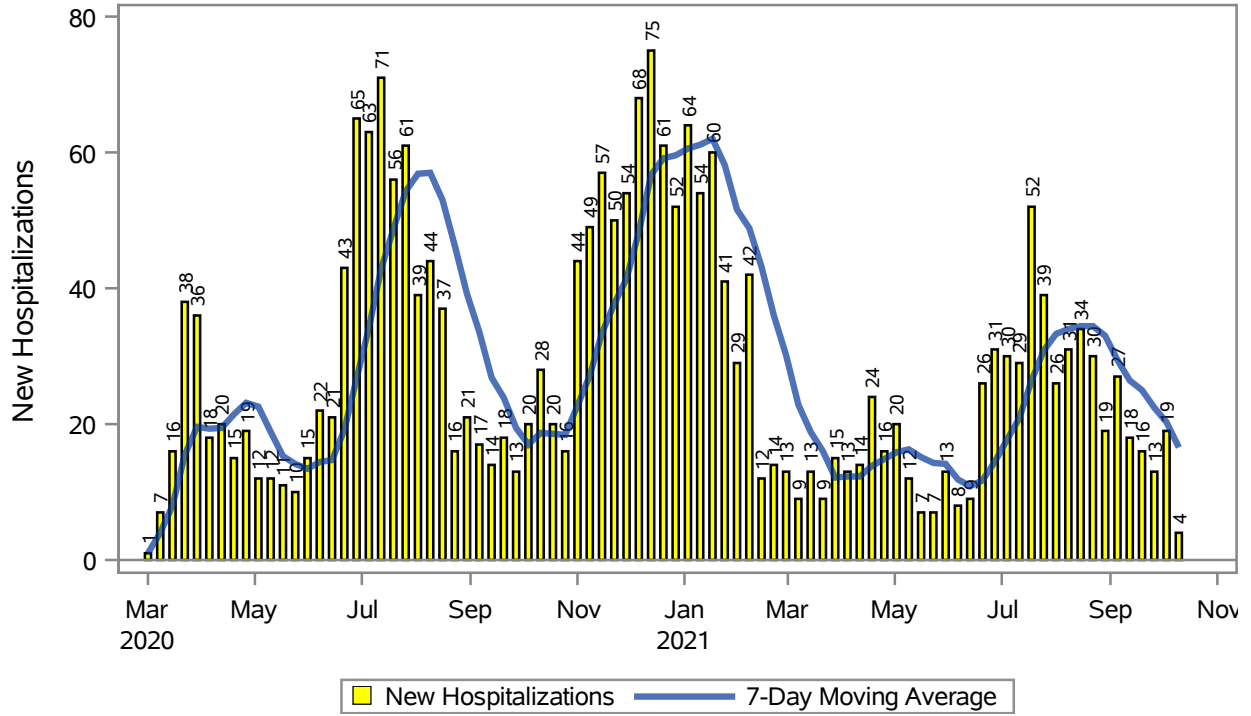
Collection Date	Positive	Negative	Equivocal	Total	% Positivity	7-Day Moving Average
27SEP2021	85	951	2	1039	8.18	10.0
28SEP2021	95	1069	4	1170	8.12	10.1
29SEP2021	95	1146	4	1250	7.60	10.0
30SEP2021	70	1095	1	1167	6.00	9.98
01OCT2021	81	601	1	684	11.84	10.3
02OCT2021	43	324		367	11.72	10.3
03OCT2021	46	268		314	14.65	9.73
04OCT2021	84	868	1	954	8.81	9.82
05OCT2021	85	1046	3	1134	7.50	9.73
06OCT2021	78	1195	3	1276	6.11	9.52
07OCT2021	90	1127		1218	7.39	9.72
08OCT2021	72	530	1	603	11.94	9.73
09OCT2021	54	258		312	17.31	10.5
10OCT2021	49	237		287	17.07	10.9
11OCT2021	65	801	1	867	7.50	10.7

Note: Testing Data includes a 3 day delay

**Investigations are ongoing; data are subject to change.
Reporting through 13OCT2021**

North Las Vegas zip codes include 89030, 89031, 89032, 89033, 89036, 89081, 89084, 89085, 89086, 89087.

COVID19 Hospitalizations for North Las Vegas, 7-Day Moving Average



Investigations are ongoing; data are subject to change.

Reporting through 13OCT2021

North Las Vegas zip codes include 89030, 89031, 89032, 89033, 89036, 89081, 89084, 89085, 89086, 89087.

Table 3: New COVID19-Related Hospitalizations and 7-Day Moving Average in North Las Vegas, previous month

Week	Hospitalizations	7-Day Moving Average
19SEP2021	16	25.0
26SEP2021	13	22.4
03OCT2021	19	20.3
10OCT2021	4	16.6

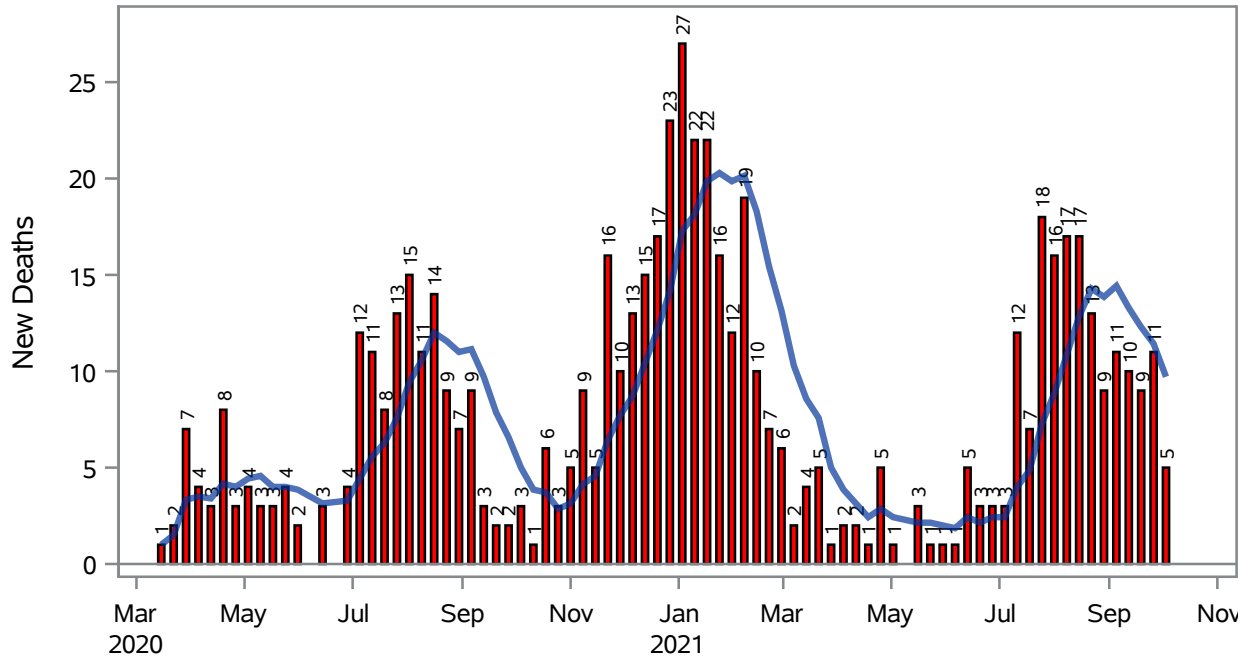
Note1: Admission Date is calculated as follows based on completed information:
A) COVID19 Case is hospitalized B) COVID19 Case has a hospital admission date.

If admission date is missing, then the following is substituted temporarily, in order:
1) Disease onset date 2) Disease diagnosis date 3) Lab result collection date 4) Report date to SNHD.

**Investigations are ongoing; data are subject to change.
Reporting through 13OCT2021**

North Las Vegas zip codes include 89030, 89031, 89032, 89033, 89036, 89081, 89084, 89085, 89086, 89087.

COVID19 Deaths for North Las Vegas, 7-Day Moving Average



■ New Deaths
 — 7-Day Moving Average

Investigations are ongoing; data are subject to change.

Reporting through 13OCT2021

North Las Vegas zip codes include 89030, 89031, 89032, 89033, 89036, 89081, 89084, 89085, 89086, 89087.

Table 4: New COVID19-Related Deaths and 7-Day Moving Average in North Las Vegas, Previous Month

Week	Deaths	7-Day Moving Average
19SEP2021	9	12.3
26SEP2021	11	11.4
03OCT2021	5	9.71

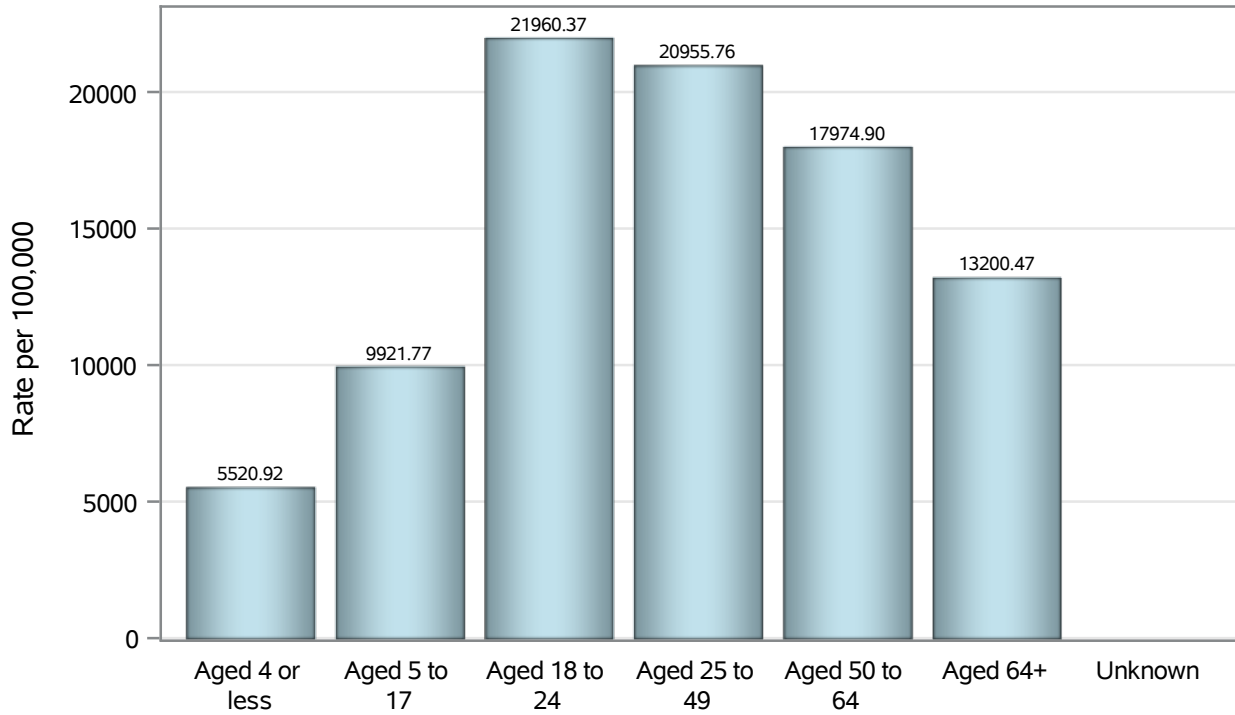
Note1: Date of Death is calculated as follows based on completed information:
A) COVID19 Case is reported as deceased B) COVID19 Case has a reported date of death.

If date of death is missing, then the following is substituted temporarily, in order:
1) Disease onset date 2) Disease diagnosis date
3) Lab result collection date 4) Report date to SNHD.

**Investigations are ongoing; data are subject to change.
Reporting through 13OCT2021**

North Las Vegas zip codes include 89030, 89031, 89032, 89033, 89036, 89081, 89084, 89085, 89086, 89087.

Case Age Rates in North Las Vegas

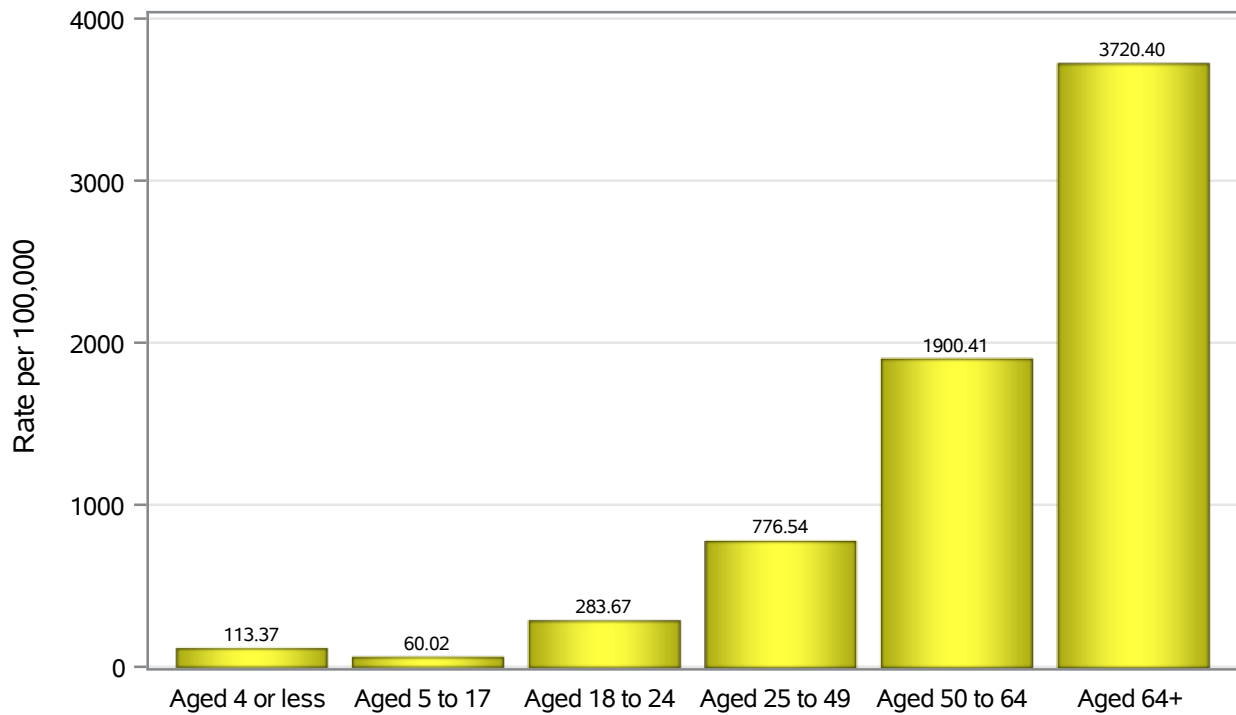


Investigations are ongoing; data are subject to change.

Reporting through 13OCT2021

North Las Vegas zip codes include 89030, 89031, 89032, 89033, 89036, 89081, 89084, 89085, 89086, 89087.

Hospitalization Age Rates in North Las Vegas

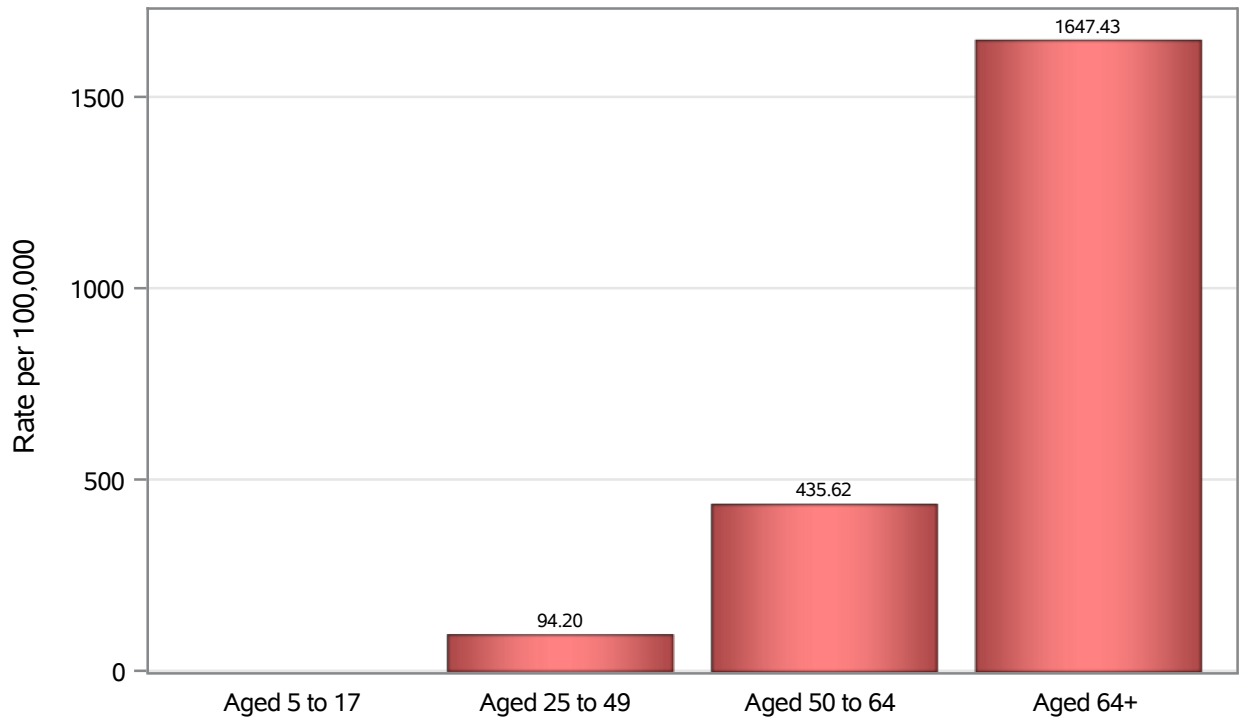


Investigations are ongoing; data are subject to change.

Reporting through 13OCT2021

North Las Vegas zip codes include 89030, 89031, 89032, 89033, 89036, 89081, 89084, 89085, 89086, 89087.

Death Age Rates in North Las Vegas



Investigations are ongoing; data are subject to change.

Reporting through 13OCT2021

North Las Vegas zip codes include 89030, 89031, 89032, 89033, 89036, 89081, 89084, 89085, 89086, 89087.

Table 5: Age and COVID19 in North Las Vegas

Case Status	Age Categories	N	%	Population	Rate per 100,000
Cases	Aged 4 or less	974	2.6	17,642	5520.9
	Aged 5 to 17	4959	13.0	49,981	9921.8
	Aged 18 to 24	5032	13.2	22,914	21960
	Aged 25 to 49	17352	45.6	82,803	20956
	Aged 50 to 64	6602	17.3	36,729	17975
	Aged 64+	3133	8.2	23,734	13200
	Unknown	9	0.0	.	.
Hospitalizations	Aged 4 or less	20	0.9	17,642	113.37
	Aged 5 to 17	30	1.3	49,981	60.02
	Aged 18 to 24	65	2.8	22,914	283.67
	Aged 25 to 49	643	27.5	82,803	776.54
	Aged 50 to 64	698	29.8	36,729	1900.4
	Aged 64+	883	37.8	23,734	3720.4
Deaths	Aged 5 to 17	1	0.2	49,981	.
	Aged 25 to 49	78	12.4	82,803	94.20
	Aged 50 to 64	160	25.4	36,729	435.62
	Aged 64+	391	62.1	23,734	1647.4

Note1: Population data source for calculating rate estimates: U.S. Census Bureau, ACS 5-year estimate.

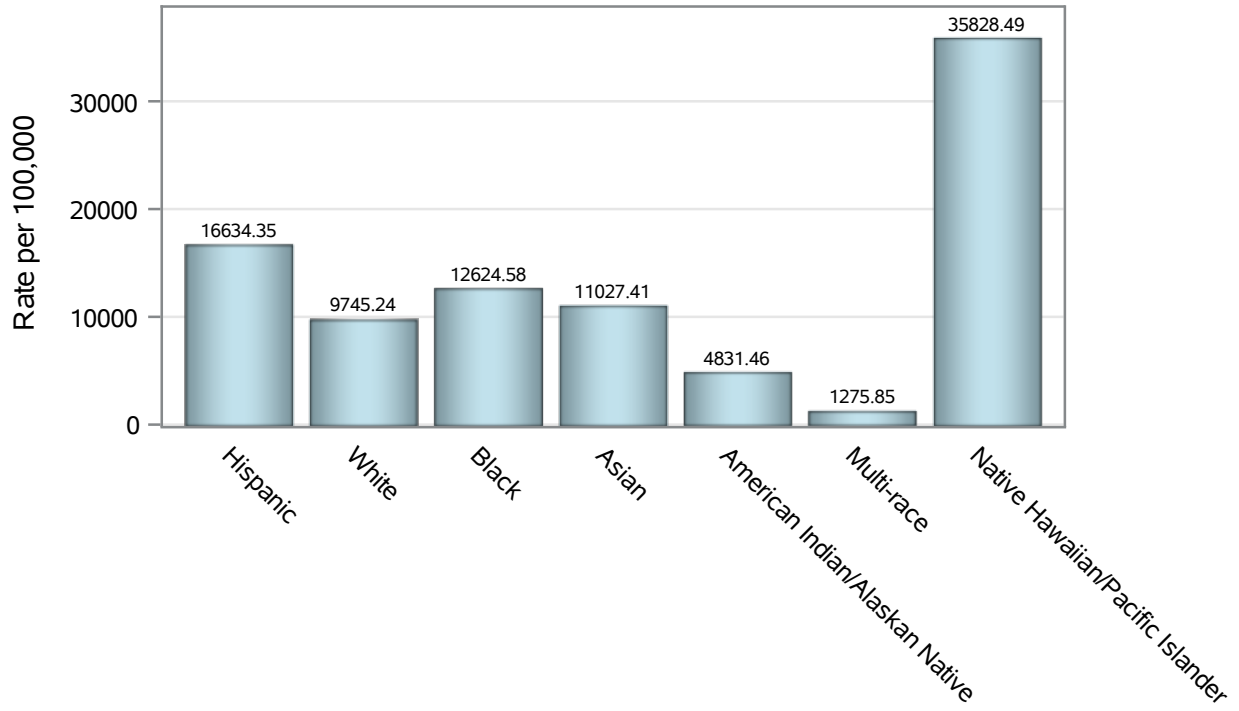
Note2: Rates for categories with fewer than 12 cases are suppressed due to high relative standard error.

Note3: Hospitalizations are regardless of deceased status; Deaths are regardless of hospitalization status

**Investigations are ongoing; data are subject to change.
Reporting through 13OCT2021**

North Las Vegas zip codes include 89030, 89031, 89032, 89033, 89036, 89081, 89084, 89085, 89086, 89087.

Case Race/Ethnicity Rates in North Las Vegas

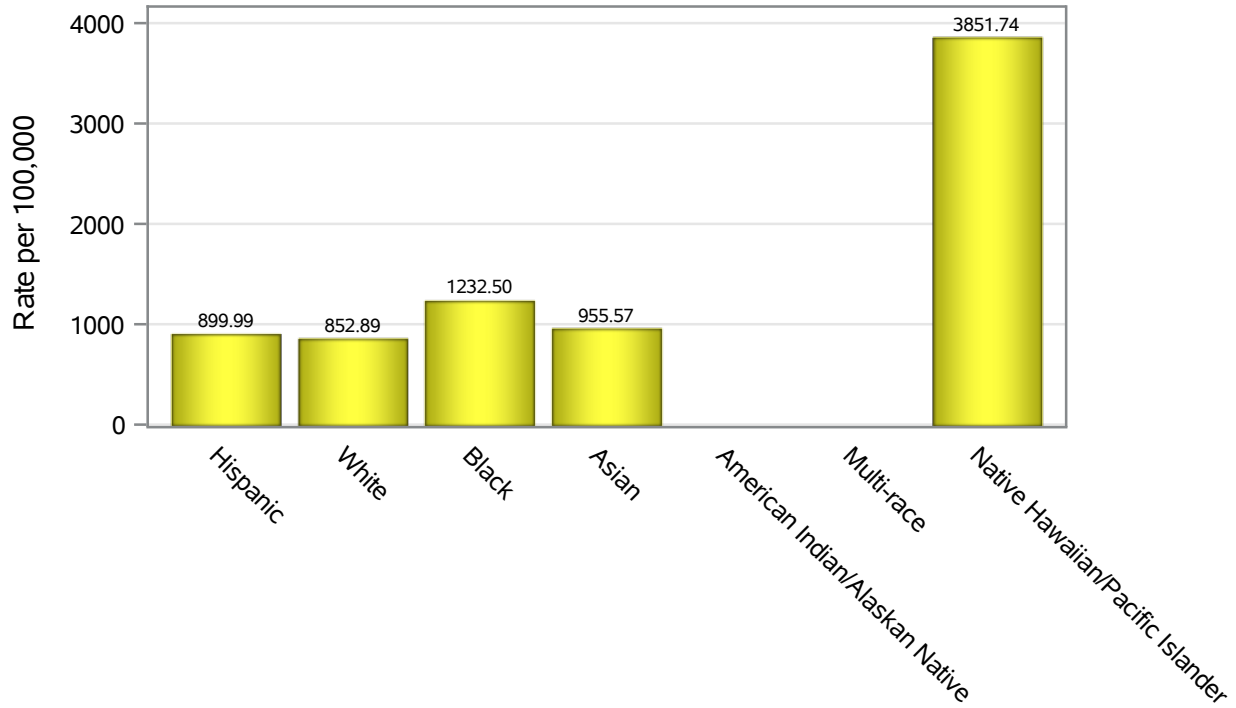


Investigations are ongoing; data are subject to change.

Reporting through 13OCT2021

North Las Vegas zip codes include 89030, 89031, 89032, 89033, 89036, 89081, 89084, 89085, 89086, 89087.

Hospitalization Race/Ethnicity Rates in North Las Vegas

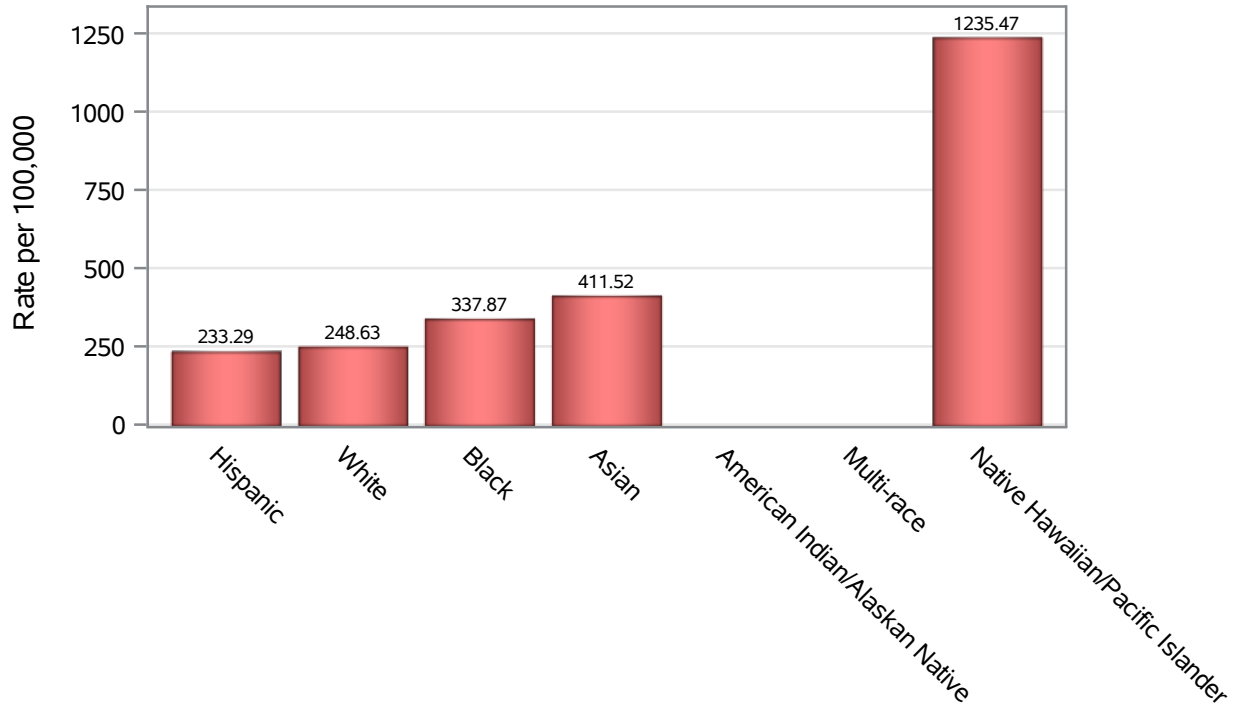


Investigations are ongoing; data are subject to change.

Reporting through 13OCT2021

North Las Vegas zip codes include 89030, 89031, 89032, 89033, 89036, 89081, 89084, 89085, 89086, 89087.

Death Race/Ethnicity Rates in North Las Vegas



Investigations are ongoing; data are subject to change.

Reporting through 13OCT2021

North Las Vegas zip codes include 89030, 89031, 89032, 89033, 89036, 89081, 89084, 89085, 89086, 89087.

Table 6: Race/Ethnicity and COVID19 in North Las Vegas

Case Status	Race Ethnicity Categories	N	%	Population	Rate per 100,000
Cases	Hispanic	16043	42.2	96,445	16634
	White	6193	16.3	63,549	9745.2
	Black	5941	15.6	47,059	12625
	Asian	1581	4.2	14,337	11027
	American Indian/Alaskan Native	43	0.1	890	4831.5
	Multi-race	124	0.3	9,719	1275.9
	Native Hawaiian/Pacific Islander	493	1.3	1,376	35828
	Unknown	7643	20.1	.	.
Hospitalizations	Hispanic	868	37.1	96,445	899.99
	White	542	23.2	63,549	852.89
	Black	580	24.8	47,059	1232.5
	Asian	137	5.9	14,337	955.57
	American Indian/Alaskan Native	8	0.3	890	.
	Multi-race	7	0.3	9,719	.
	Native Hawaiian/Pacific Islander	53	2.3	1,376	3851.7
	Unknown	144	6.2	.	.
Deaths	Hispanic	225	35.7	96,445	233.29
	White	158	25.1	63,549	248.63
	Black	159	25.2	47,059	337.87
	Asian	59	9.4	14,337	411.52
	American Indian/Alaskan Native	4	0.6	890	.
	Multi-race	2	0.3	9,719	.
	Native Hawaiian/Pacific Islander	17	2.7	1,376	1235.5
	Unknown	6	1.0	.	.

Note1: Population data source for calculating rate estimates: U.S. Census Bureau, ACS 5-year estimate.

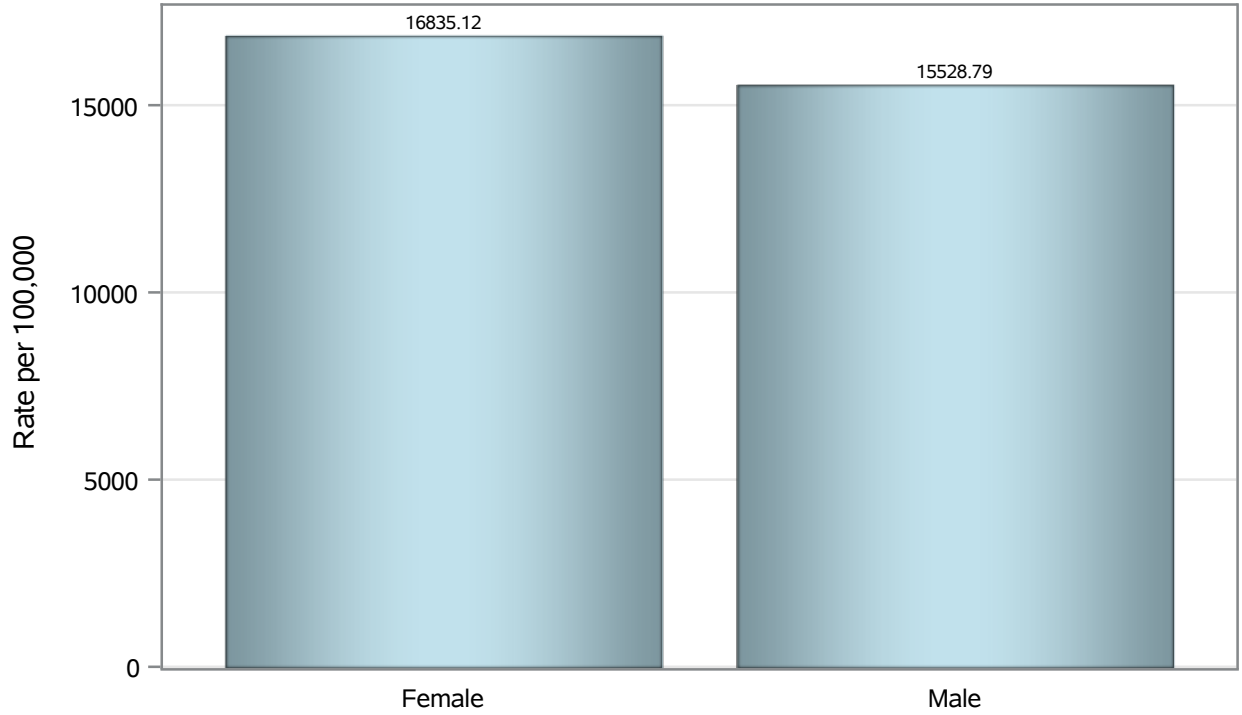
Note2: Rates for categories with fewer than 12 cases are suppressed due to high relative standard error.

Note3: Hospitalizations are regardless of deceased status; Deaths are regardless of hospitalization status

**Investigations are ongoing; data are subject to change.
Reporting through 13OCT2021**

North Las Vegas zip codes include 89030, 89031, 89032, 89033, 89036, 89081, 89084, 89085, 89086, 89087.

Case Birth Sex Rates in North Las Vegas

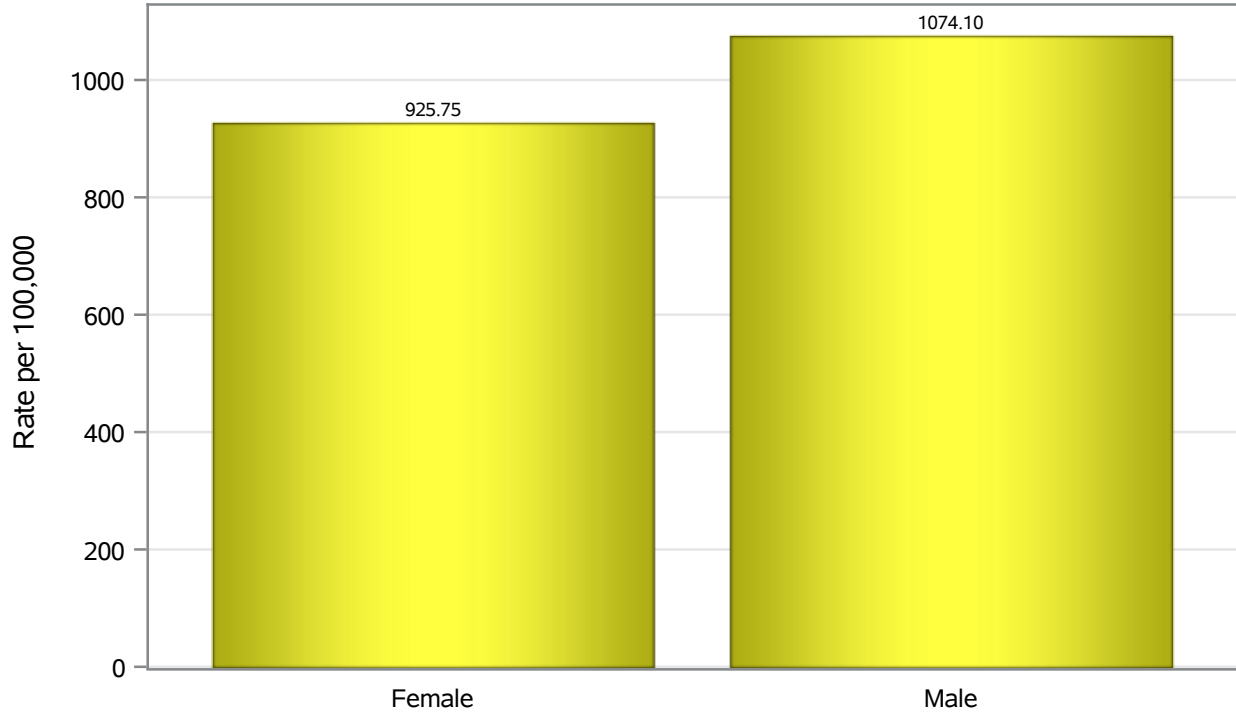


Investigations are ongoing; data are subject to change.

Reporting through 13OCT2021

North Las Vegas zip codes include 89030, 89031, 89032, 89033, 89036, 89081, 89084, 89085, 89086, 89087.

Hospitalization Birth Sex Rates in North Las Vegas

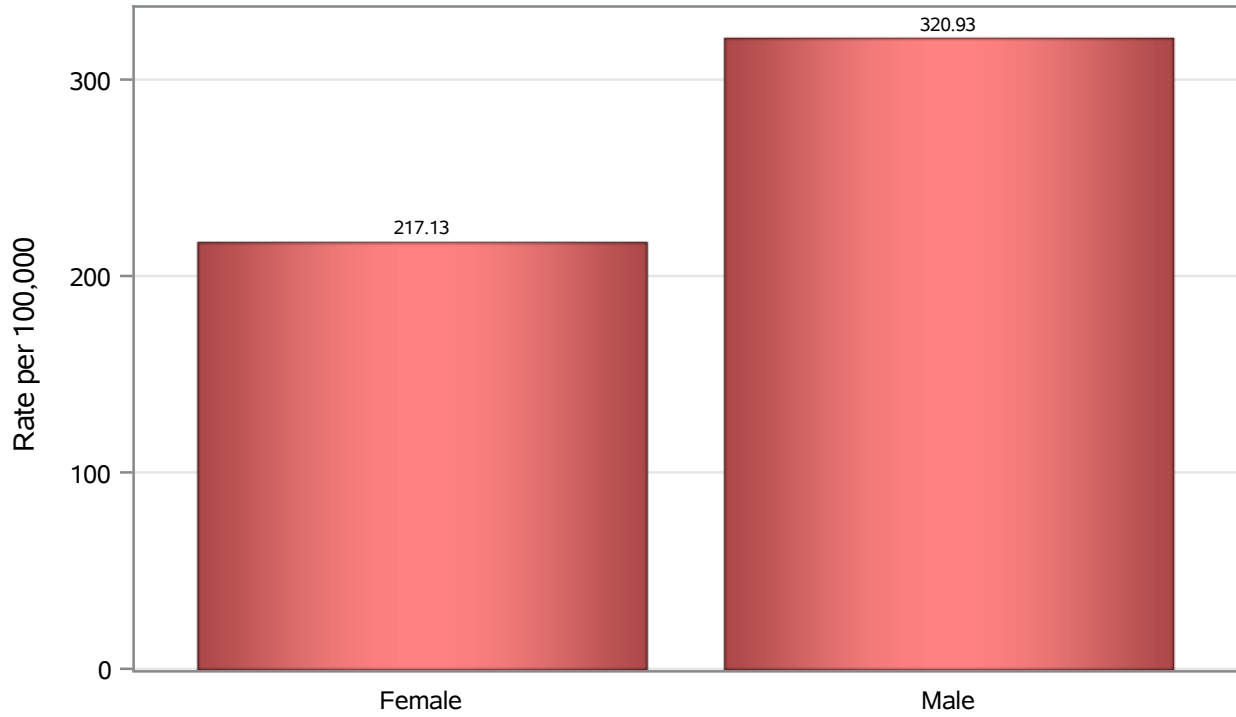


Investigations are ongoing; data are subject to change.

Reporting through 13OCT2021

North Las Vegas zip codes include 89030, 89031, 89032, 89033, 89036, 89081, 89084, 89085, 89086, 89087.

Death Birth Sex Rates in North Las Vegas



Investigations are ongoing; data are subject to change.

Reporting through 13OCT2021

North Las Vegas zip codes include 89030, 89031, 89032, 89033, 89036, 89081, 89084, 89085, 89086, 89087.

Table 7: Birth Sex and COVID19 in North Las Vegas

Case Status	Birth Sex Categories	N	%	Population	Rate per 100,000
Cases	Female	20004	52.6	118823	16835
	Male	17855	46.9	114980	15529
	Unknown	202	0.5	.	.
Hospitalizations	Female	1100	47.0	118823	925.75
	Male	1235	52.8	114980	1074.1
	Unknown	4	0.2	.	.
Deaths	Female	258	41.0	118823	217.13
	Male	369	58.6	114980	320.93
	Unknown	3	0.5	.	.

Note1: Population data source for calculating rate estimates: U.S. Census Bureau, ACS 5-year estimate.

Note2: Rates for categories with fewer than 12 cases are suppressed due to high relative standard error.

Note3: Hospitalizations are regardless of deceased status; Deaths are regardless of hospitalization status

**Investigations are ongoing; data are subject to change.
Reporting through 13OCT2021**

North Las Vegas zip codes include 89030, 89031, 89032, 89033, 89036, 89081, 89084, 89085, 89086, 89087.