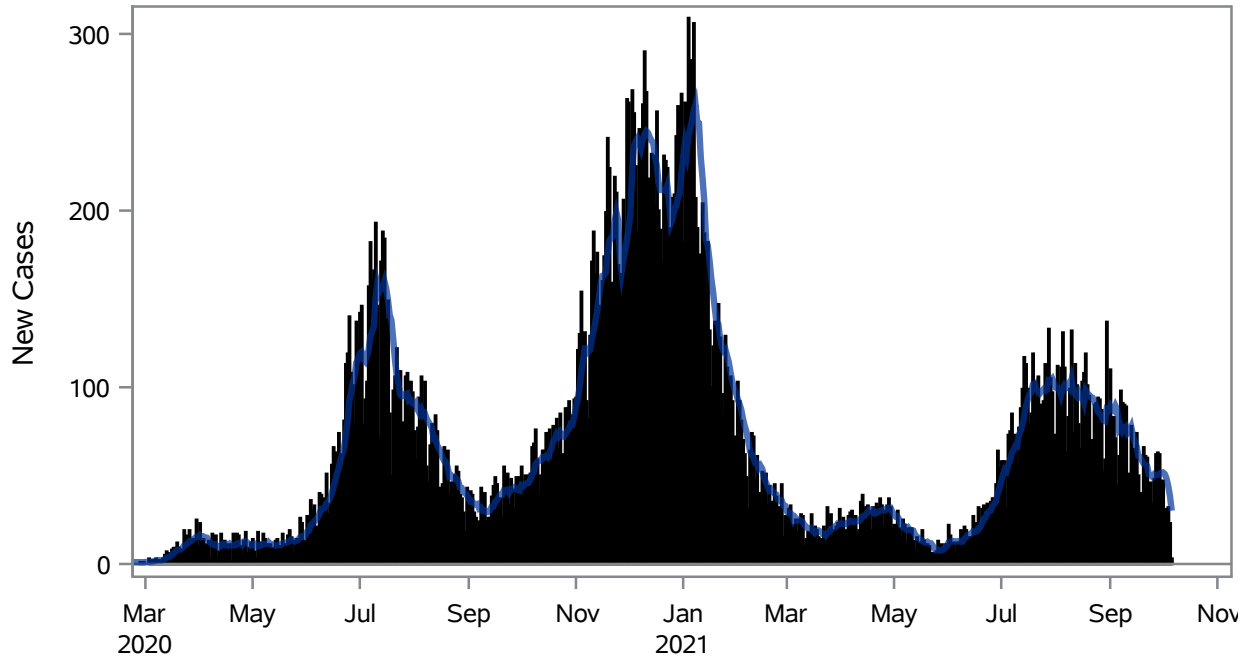


COVID19 Cases for North Las Vegas, 7-Day Moving Average



■ New Cases — 7-Day Moving Average

Investigations are ongoing; data are subject to change.

Reporting through 06OCT2021

North Las Vegas zip codes include 89030, 89031, 89032, 89033, 89036, 89081, 89084, 89085, 89086, 89087.

Table 1: New COVID19 Cases and 7-Day Moving Average in North Las Vegas, Previous Two Weeks

Date (Daily)	New Cases	7-Day Moving Average
23SEP2021	40	50.71
24SEP2021	46	50.14
25SEP2021	34	49.29
26SEP2021	48	50.71
27SEP2021	62	50.14
28SEP2021	63	50.43
29SEP2021	62	50.71
30SEP2021	47	51.71
01OCT2021	47	51.86
02OCT2021	28	51.00
03OCT2021	31	48.57
04OCT2021	32	44.29

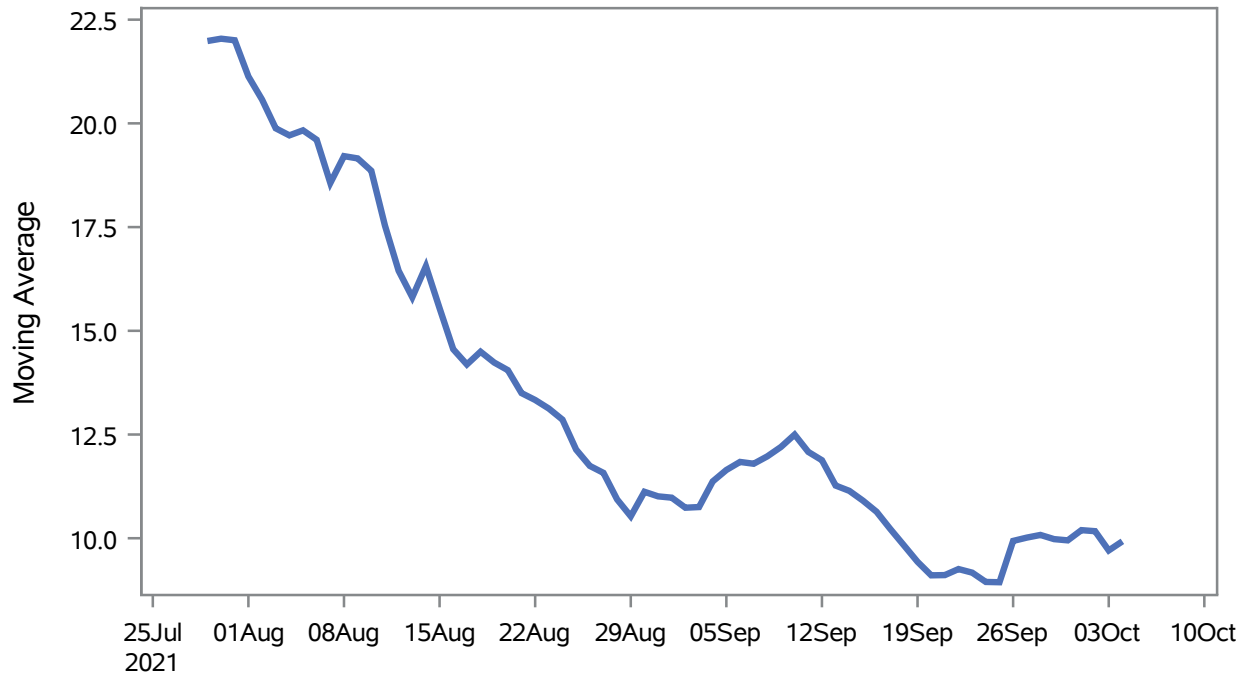
Note1: Event Date is calculated as follows based on completed information:

1) Disease onset date 2) Disease diagnosis date 3) Lab result collection date 4) Report date to SNHD.

**Investigations are ongoing; data are subject to change.
Reporting through 06OCT2021**

North Las Vegas zip codes include 89030, 89031, 89032, 89033, 89036, 89081, 89084, 89085, 89086, 89087.

Percent of People Receiving COVID-19 Viral Tests Who Have Positive Results in North Las Vegas



Investigations are ongoing; data are subject to change.

Reporting through 06OCT2021

North Las Vegas zip codes include 89030, 89031, 89032, 89033, 89036, 89081, 89084, 89085, 89086, 89087.

Table 2: Percent of People Receiving COVID-19 Viral Tests Who Have Positive Results in North Las Vegas

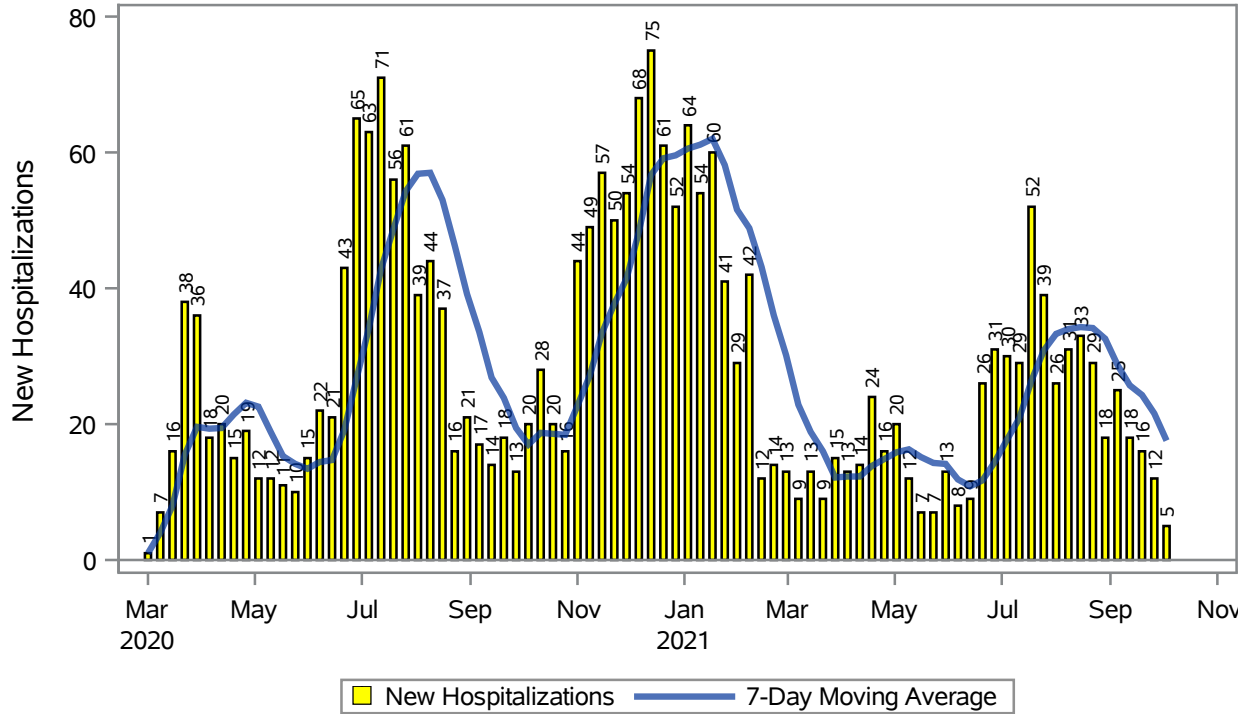
Collection Date	Positive	Negative	Equivocal	Total	% Positivity	7-Day Moving Average
20SEP2021	90	1086	5	1181	7.62	9.11
21SEP2021	86	1035	4	1126	7.64	9.11
22SEP2021	102	1133	3	1243	8.21	9.26
23SEP2021	70	1071		1143	6.12	9.17
24SEP2021	67	607	2	676	9.91	8.95
25SEP2021	34	256		291	11.68	8.94
26SEP2021	65	288	1	354	18.36	9.94
27SEP2021	85	951	2	1039	8.18	10.0
28SEP2021	95	1074	4	1175	8.09	10.1
29SEP2021	94	1150	4	1253	7.50	9.98
30SEP2021	69	1095	1	1166	5.92	9.95
01OCT2021	79	598	1	679	11.63	10.2
02OCT2021	42	323		365	11.51	10.2
03OCT2021	47	264		311	15.11	9.71
04OCT2021	69	639	1	710	9.72	9.93

Note: Testing Data includes a 3 day delay

**Investigations are ongoing; data are subject to change.
Reporting through 06OCT2021**

North Las Vegas zip codes include 89030, 89031, 89032, 89033, 89036, 89081, 89084, 89085, 89086, 89087.

COVID19 Hospitalizations for North Las Vegas, 7-Day Moving Average



Investigations are ongoing; data are subject to change.

Reporting through 06OCT2021

North Las Vegas zip codes include 89030, 89031, 89032, 89033, 89036, 89081, 89084, 89085, 89086, 89087.

Table 3: New COVID19-Related Hospitalizations and 7-Day Moving Average in North Las Vegas, previous month

Week	Hospitalizations	7-Day Moving Average
12SEP2021	18	25.7
19SEP2021	16	24.3
26SEP2021	12	21.6
03OCT2021	5	17.6

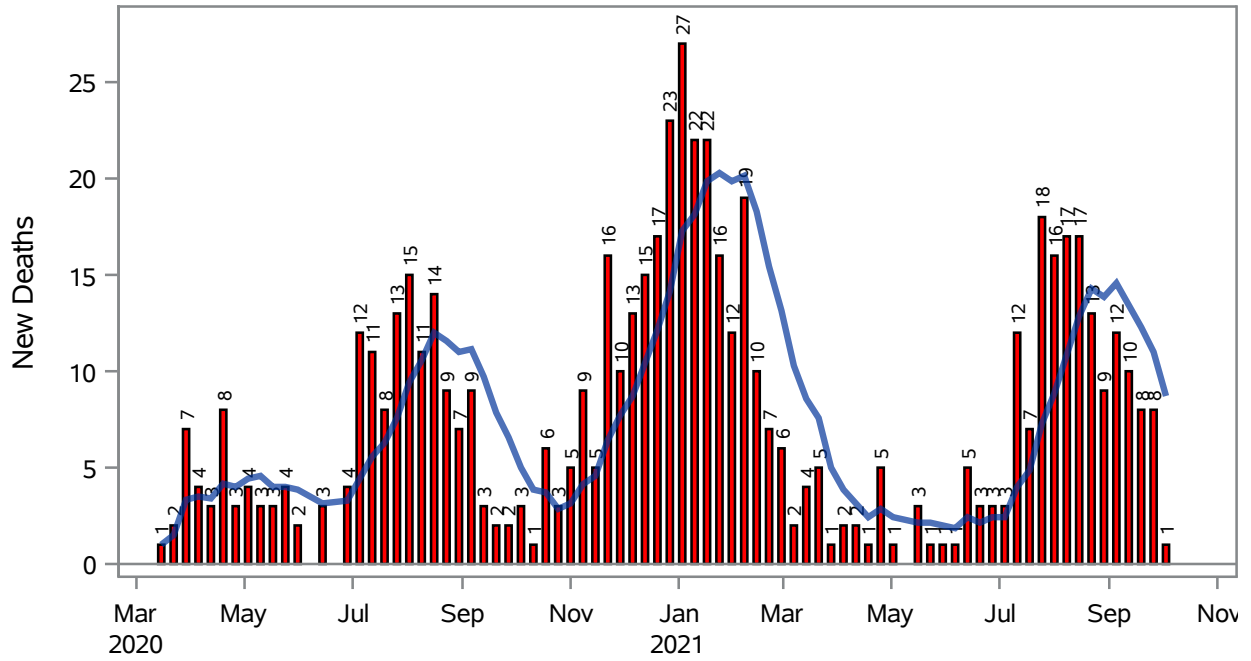
Note1: Admission Date is calculated as follows based on completed information:
A) COVID19 Case is hospitalized B) COVID19 Case has a hospital admission date.

If admission date is missing, then the following is substituted temporarily, in order:
1) Disease onset date 2) Disease diagnosis date 3) Lab result collection date 4) Report date to SNHD.

**Investigations are ongoing; data are subject to change.
Reporting through 06OCT2021**

North Las Vegas zip codes include 89030, 89031, 89032, 89033, 89036, 89081, 89084, 89085, 89086, 89087.

COVID19 Deaths for North Las Vegas, 7-Day Moving Average



■ New Deaths — 7-Day Moving Average

Investigations are ongoing; data are subject to change.

Reporting through 06OCT2021

North Las Vegas zip codes include 89030, 89031, 89032, 89033, 89036, 89081, 89084, 89085, 89086, 89087.

Table 4: New COVID19-Related Deaths and 7-Day Moving Average in North Las Vegas, Previous Month

Week	Deaths	7-Day Moving Average
12SEP2021	10	13.4
19SEP2021	8	12.3
26SEP2021	8	11.0
03OCT2021	1	8.71

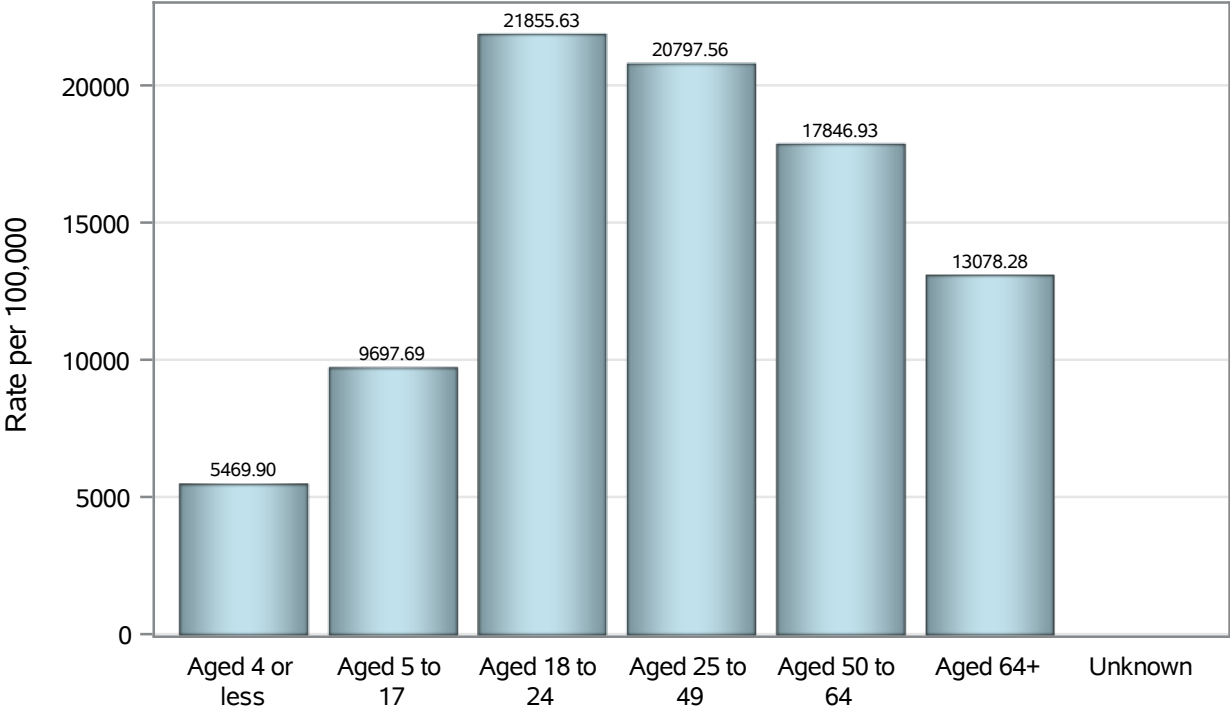
Note1: Date of Death is calculated as follows based on completed information:
A) COVID19 Case is reported as deceased B) COVID19 Case has a reported date of death.

If date of death is missing, then the following is substituted temporarily, in order:
1) Disease onset date 2) Disease diagnosis date
3) Lab result collection date 4) Report date to SNHD.

**Investigations are ongoing; data are subject to change.
Reporting through 06OCT2021**

North Las Vegas zip codes include 89030, 89031, 89032, 89033, 89036, 89081, 89084, 89085, 89086, 89087.

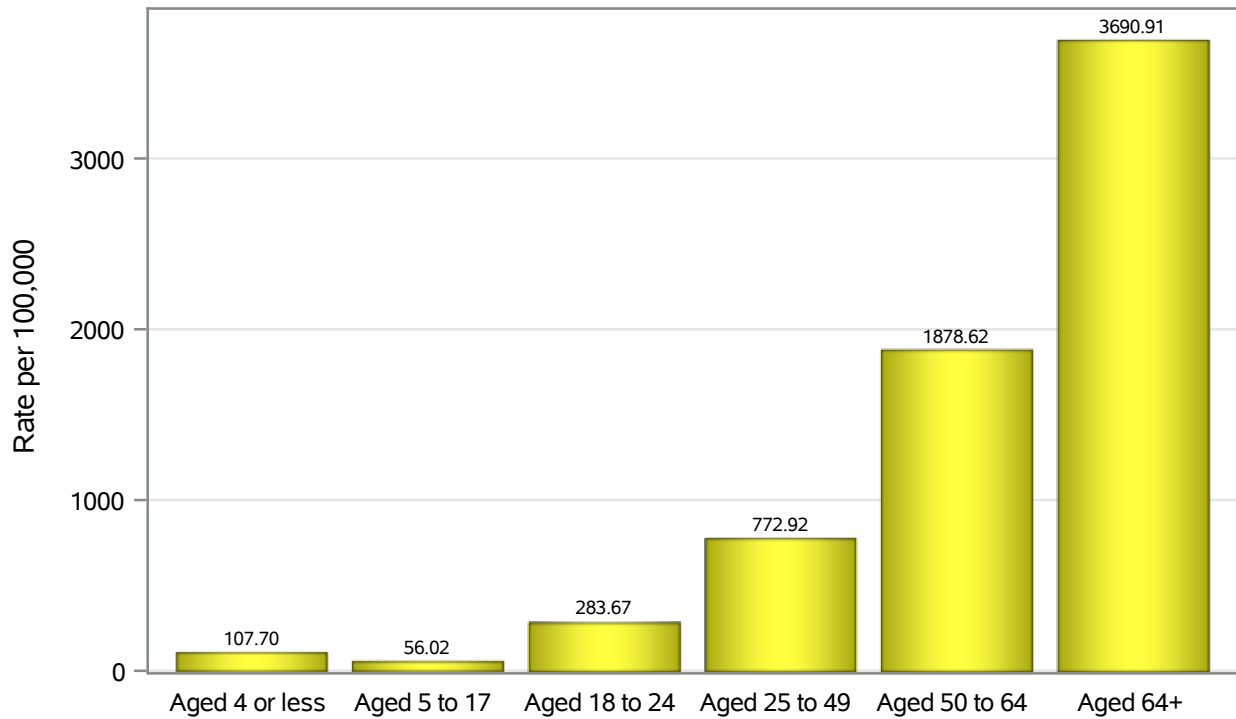
Case Age Rates in North Las Vegas



Investigations are ongoing; data are subject to change.
Reporting through 06OCT2021

North Las Vegas zip codes include 89030, 89031, 89032, 89033, 89036, 89081, 89084, 89085, 89086, 89087.

Hospitalization Age Rates in North Las Vegas

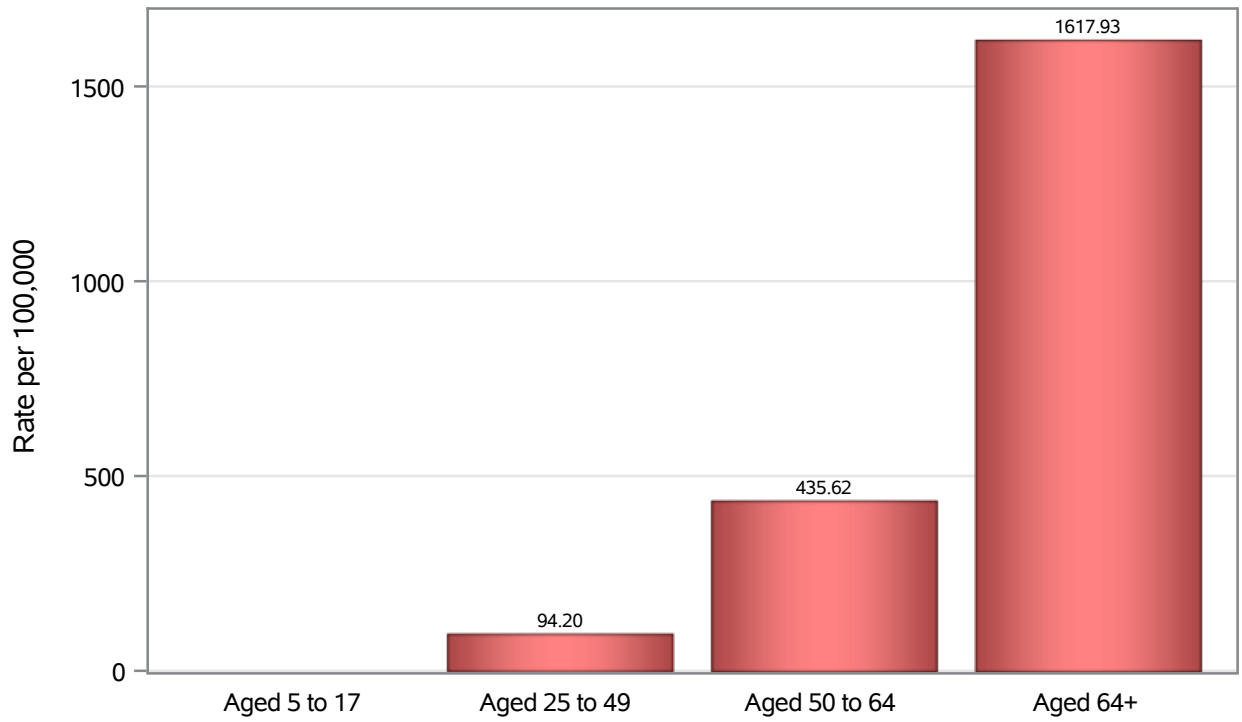


Investigations are ongoing; data are subject to change.

Reporting through 06OCT2021

North Las Vegas zip codes include 89030, 89031, 89032, 89033, 89036, 89081, 89084, 89085, 89086, 89087.

Death Age Rates in North Las Vegas



Investigations are ongoing; data are subject to change.

Reporting through 06OCT2021

North Las Vegas zip codes include 89030, 89031, 89032, 89033, 89036, 89081, 89084, 89085, 89086, 89087.

Table 5: Age and COVID19 in North Las Vegas

Case Status	Age Categories	N	%	Population	Rate per 100,000
Cases	Aged 4 or less	965	2.6	17,642	5469.9
	Aged 5 to 17	4847	12.9	49,981	9697.7
	Aged 18 to 24	5008	13.3	22,914	21856
	Aged 25 to 49	17221	45.7	82,803	20798
	Aged 50 to 64	6555	17.4	36,729	17847
	Aged 64+	3104	8.2	23,734	13078
	Unknown	9	0.0	.	.
Hospitalizations	Aged 4 or less	19	0.8	17,642	107.70
	Aged 5 to 17	28	1.2	49,981	56.02
	Aged 18 to 24	65	2.8	22,914	283.67
	Aged 25 to 49	640	27.6	82,803	772.92
	Aged 50 to 64	690	29.8	36,729	1878.6
	Aged 64+	876	37.8	23,734	3690.9
	Deaths	Aged 5 to 17	1	0.2	49,981
Aged 25 to 49		78	12.5	82,803	94.20
Aged 50 to 64		160	25.7	36,729	435.62
Aged 64+		384	61.6	23,734	1617.9

Note1: Population data source for calculating rate estimates: U.S. Census Bureau, ACS 5-year estimate.

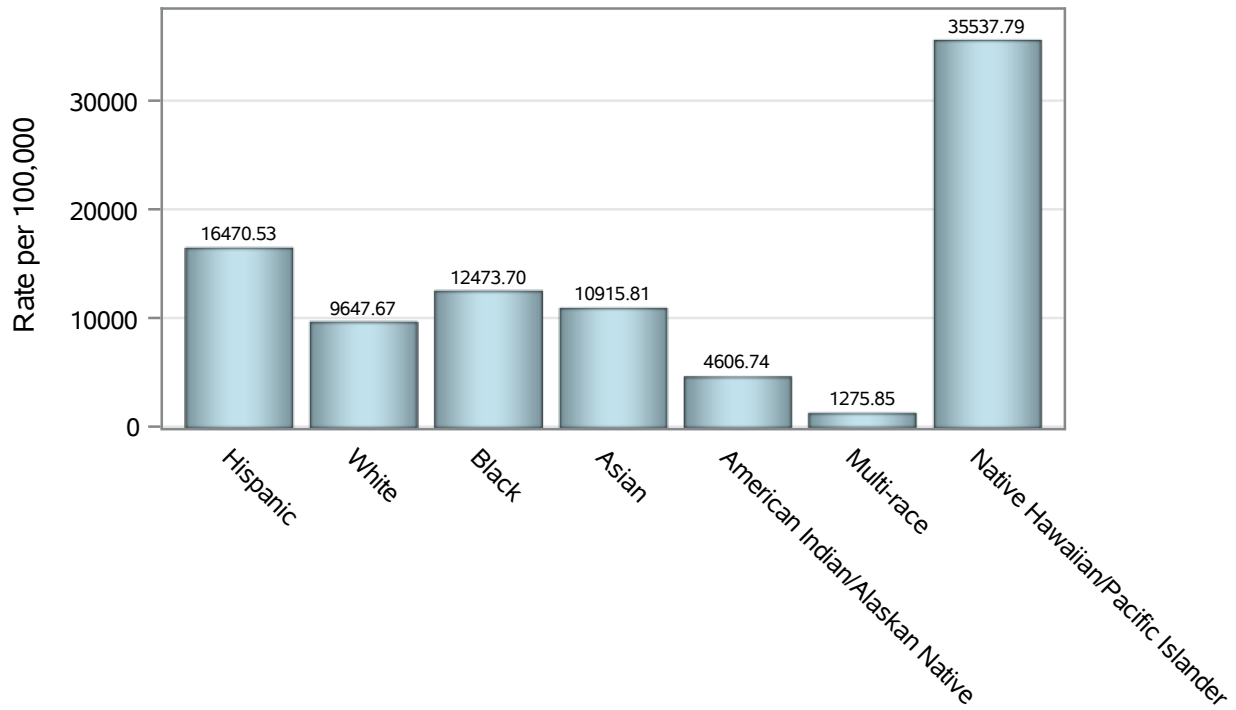
Note2: Rates for categories with fewer than 12 cases are suppressed due to high relative standard error.

Note3: Hospitalizations are regardless of deceased status; Deaths are regardless of hospitalization status

**Investigations are ongoing; data are subject to change.
Reporting through 06OCT2021**

North Las Vegas zip codes include 89030, 89031, 89032, 89033, 89036, 89081, 89084, 89085, 89086, 89087.

Case Race/Ethnicity Rates in North Las Vegas

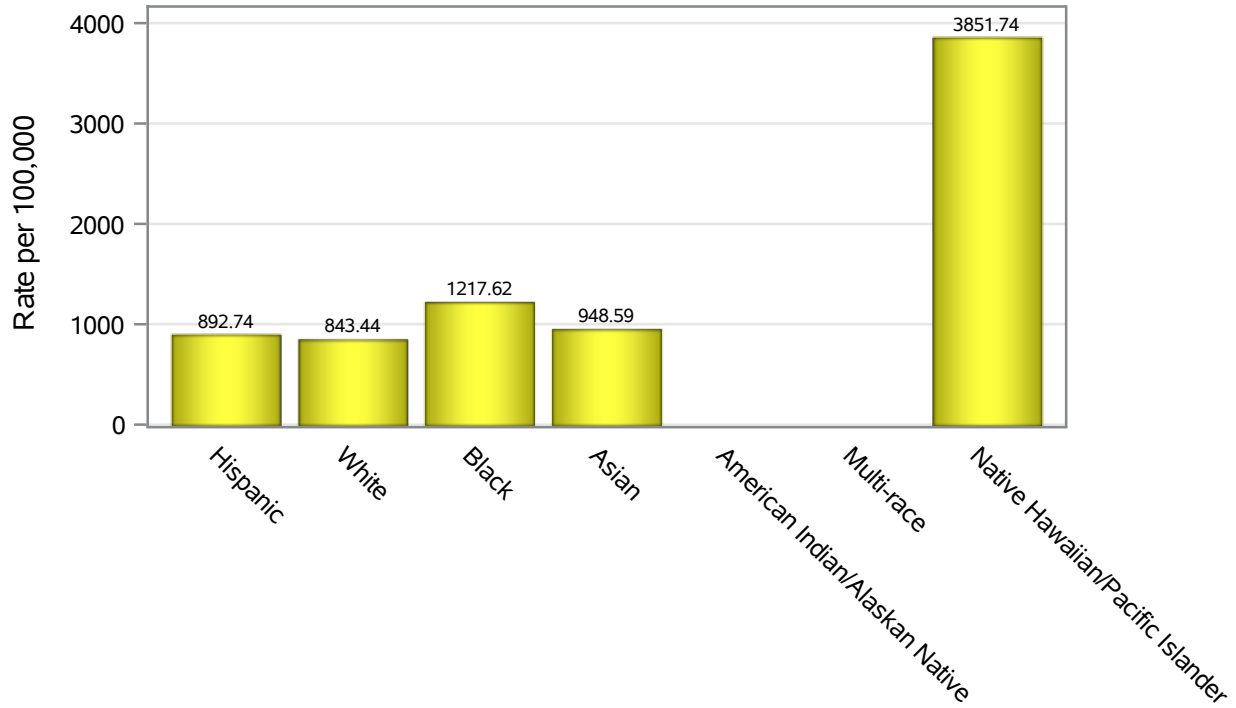


Investigations are ongoing; data are subject to change.

Reporting through 06OCT2021

North Las Vegas zip codes include 89030, 89031, 89032, 89033, 89036, 89081, 89084, 89085, 89086, 89087.

Hospitalization Race/Ethnicity Rates in North Las Vegas

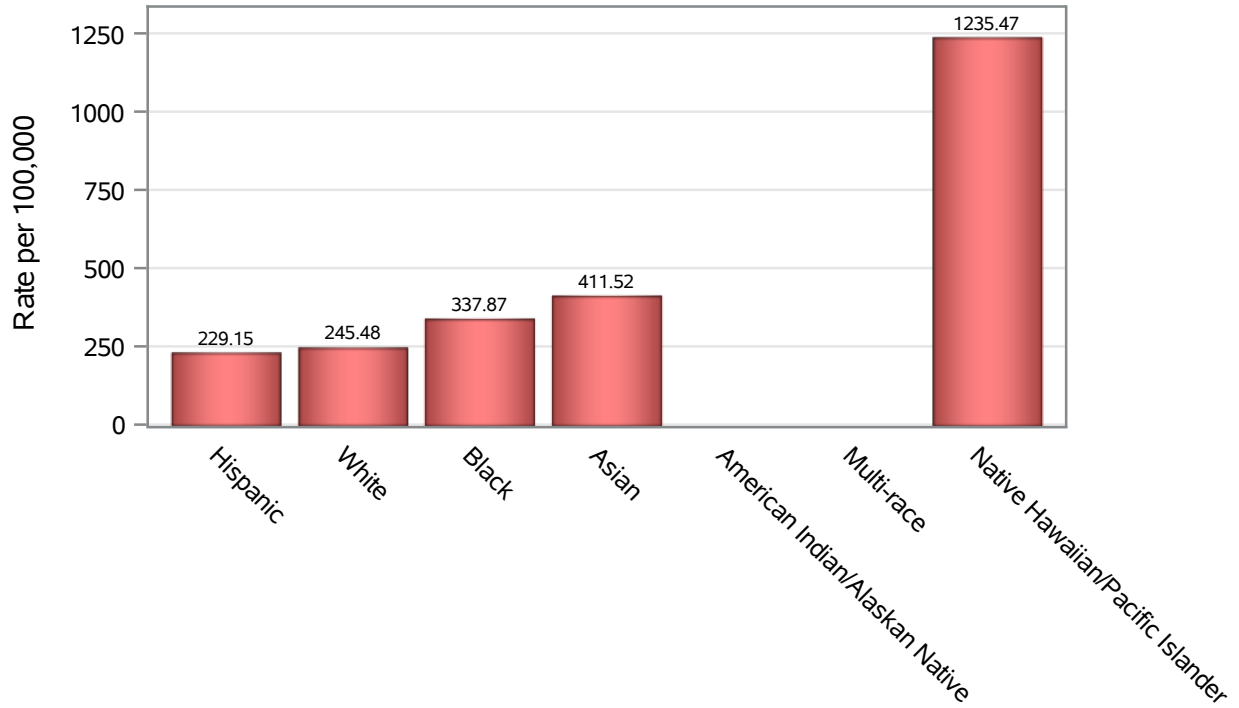


Investigations are ongoing; data are subject to change.

Reporting through 06OCT2021

North Las Vegas zip codes include 89030, 89031, 89032, 89033, 89036, 89081, 89084, 89085, 89086, 89087.

Death Race/Ethnicity Rates in North Las Vegas



Investigations are ongoing; data are subject to change.

Reporting through 06OCT2021

North Las Vegas zip codes include 89030, 89031, 89032, 89033, 89036, 89081, 89084, 89085, 89086, 89087.

Table 6: Race/Ethnicity and COVID19 in North Las Vegas

Case Status	Race Ethnicity Categories	N	%	Population	Rate per 100,000
Cases	Hispanic	15885	42.1	96,445	16471
	White	6131	16.3	63,549	9647.7
	Black	5870	15.6	47,059	12474
	Asian	1565	4.2	14,337	10916
	American Indian/Alaskan Native	41	0.1	890	4606.7
	Multi-race	124	0.3	9,719	1275.9
	Native Hawaiian/Pacific Islander	489	1.3	1,376	35538
	Unknown	7604	20.2	.	.
Hospitalizations	Hispanic	861	37.1	96,445	892.74
	White	536	23.1	63,549	843.44
	Black	573	24.7	47,059	1217.6
	Asian	136	5.9	14,337	948.59
	American Indian/Alaskan Native	8	0.3	890	.
	Multi-race	7	0.3	9,719	.
	Native Hawaiian/Pacific Islander	53	2.3	1,376	3851.7
	Unknown	144	6.2	.	.
Deaths	Hispanic	221	35.5	96,445	229.15
	White	156	25.0	63,549	245.48
	Black	159	25.5	47,059	337.87
	Asian	59	9.5	14,337	411.52
	American Indian/Alaskan Native	4	0.6	890	.
	Multi-race	2	0.3	9,719	.
	Native Hawaiian/Pacific Islander	17	2.7	1,376	1235.5
	Unknown	5	0.8	.	.

Note1: Population data source for calculating rate estimates: U.S. Census Bureau, ACS 5-year estimate.

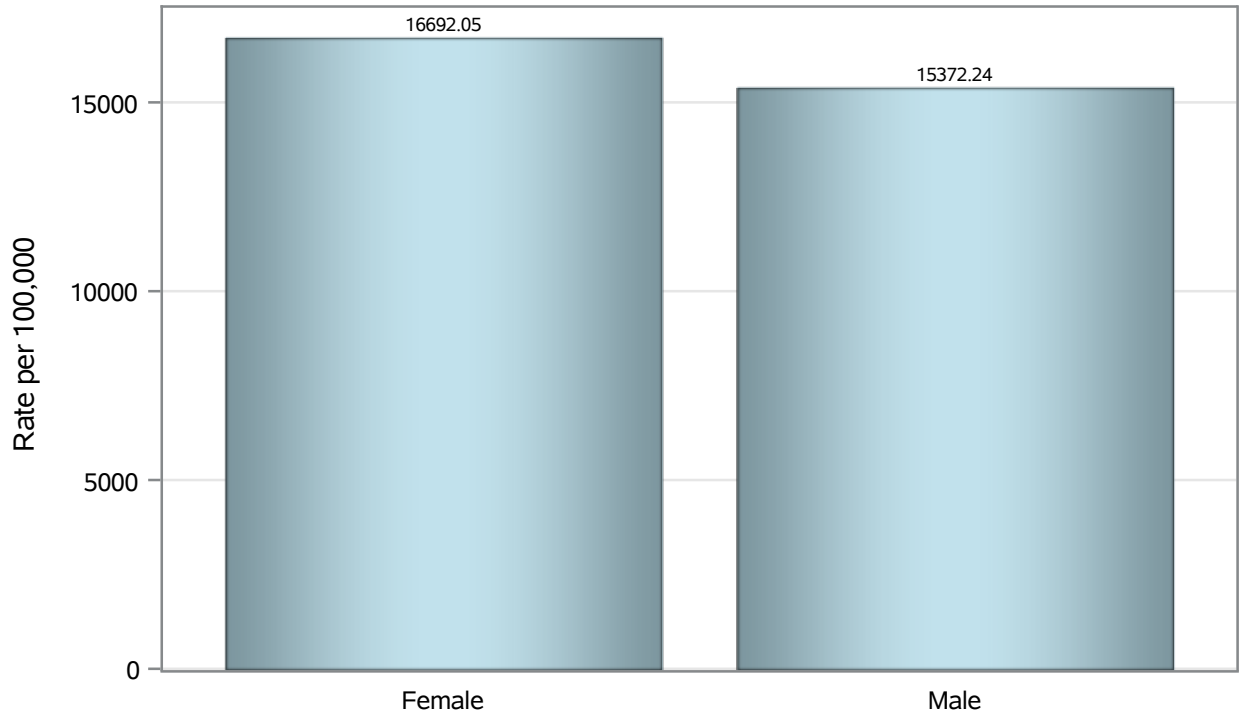
Note2: Rates for categories with fewer than 12 cases are suppressed due to high relative standard error.

Note3: Hospitalizations are regardless of deceased status; Deaths are regardless of hospitalization status

**Investigations are ongoing; data are subject to change.
Reporting through 06OCT2021**

North Las Vegas zip codes include 89030, 89031, 89032, 89033, 89036, 89081, 89084, 89085, 89086, 89087.

Case Birth Sex Rates in North Las Vegas

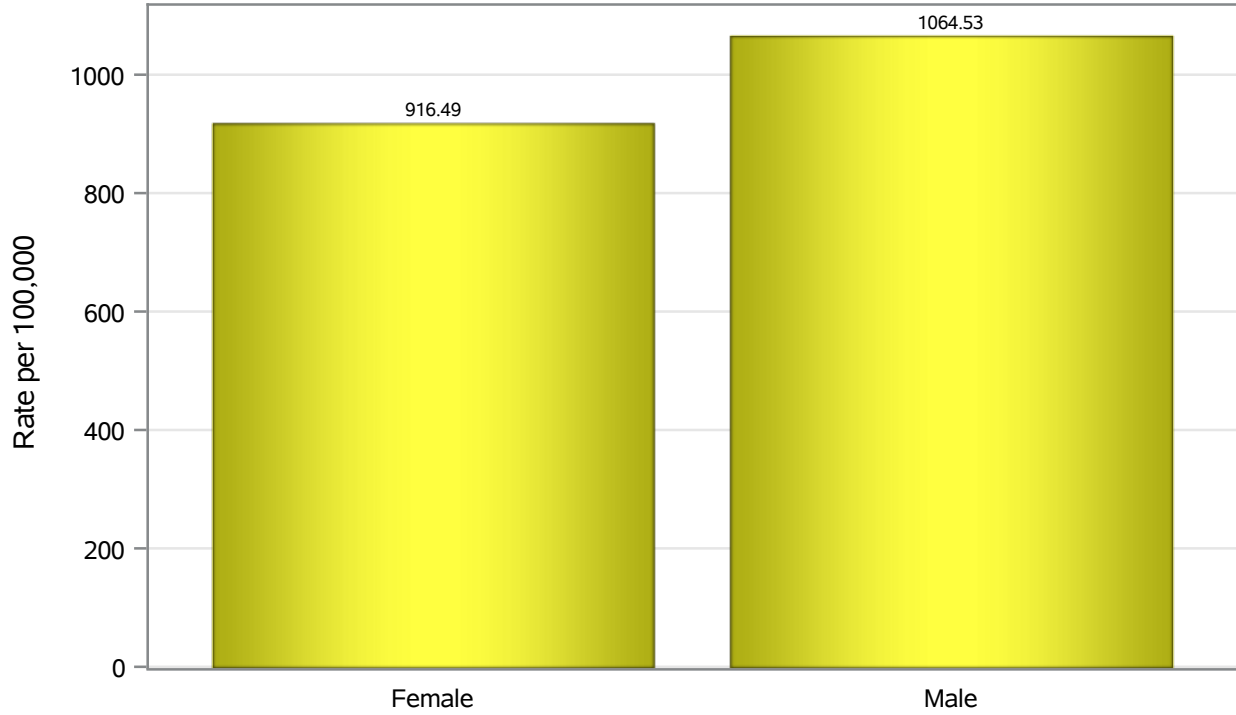


Investigations are ongoing; data are subject to change.

Reporting through 06OCT2021

North Las Vegas zip codes include 89030, 89031, 89032, 89033, 89036, 89081, 89084, 89085, 89086, 89087.

Hospitalization Birth Sex Rates in North Las Vegas

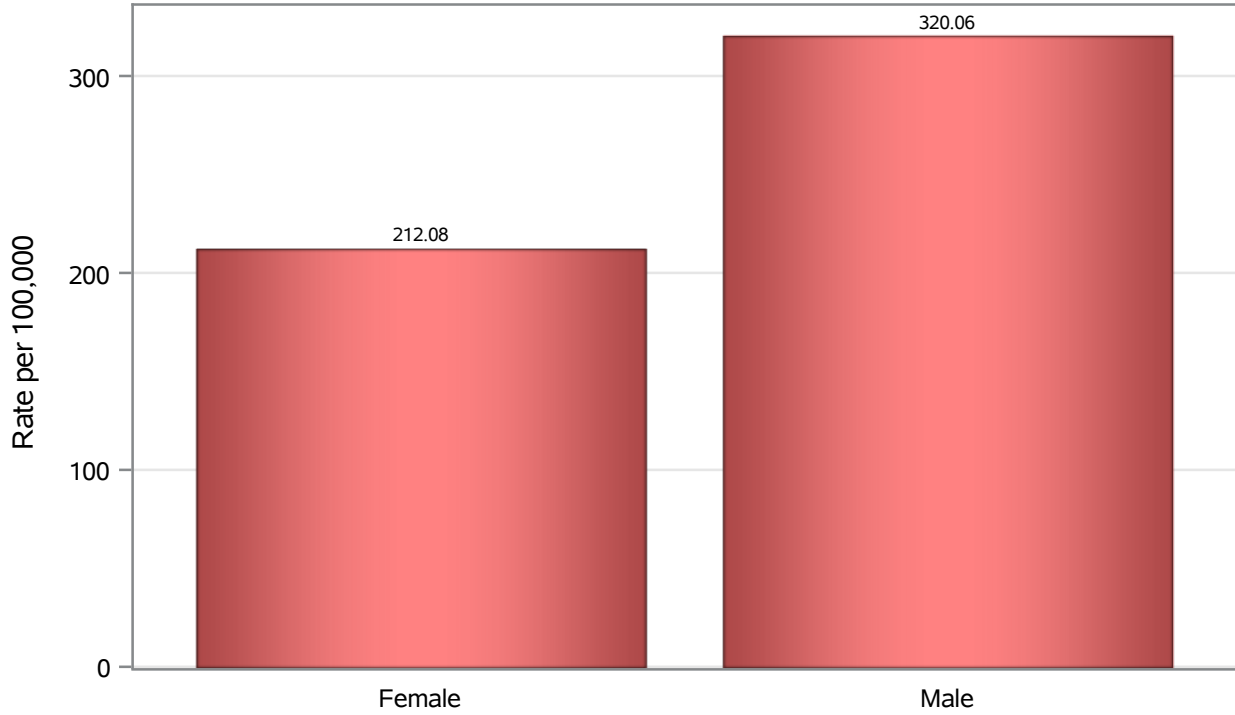


Investigations are ongoing; data are subject to change.

Reporting through 06OCT2021

North Las Vegas zip codes include 89030, 89031, 89032, 89033, 89036, 89081, 89084, 89085, 89086, 89087.

Death Birth Sex Rates in North Las Vegas



Investigations are ongoing; data are subject to change.

Reporting through 06OCT2021

North Las Vegas zip codes include 89030, 89031, 89032, 89033, 89036, 89081, 89084, 89085, 89086, 89087.

Table 7: Birth Sex and COVID19 in North Las Vegas

Case Status	Birth Sex Categories	N	%	Population	Rate per 100,000
Cases	Female	19834	52.6	118823	16692
	Male	17675	46.9	114980	15372
	Unknown	200	0.5	.	.
Hospitalizations	Female	1089	47.0	118823	916.49
	Male	1224	52.8	114980	1064.5
	Unknown	5	0.2	.	.
Deaths	Female	252	40.4	118823	212.08
	Male	368	59.1	114980	320.06
	Unknown	3	0.5	.	.

Note1: Population data source for calculating rate estimates: U.S. Census Bureau, ACS 5-year estimate.

Note2: Rates for categories with fewer than 12 cases are suppressed due to high relative standard error.

Note3: Hospitalizations are regardless of deceased status; Deaths are regardless of hospitalization status

**Investigations are ongoing; data are subject to change.
Reporting through 06OCT2021**

North Las Vegas zip codes include 89030, 89031, 89032, 89033, 89036, 89081, 89084, 89085, 89086, 89087.