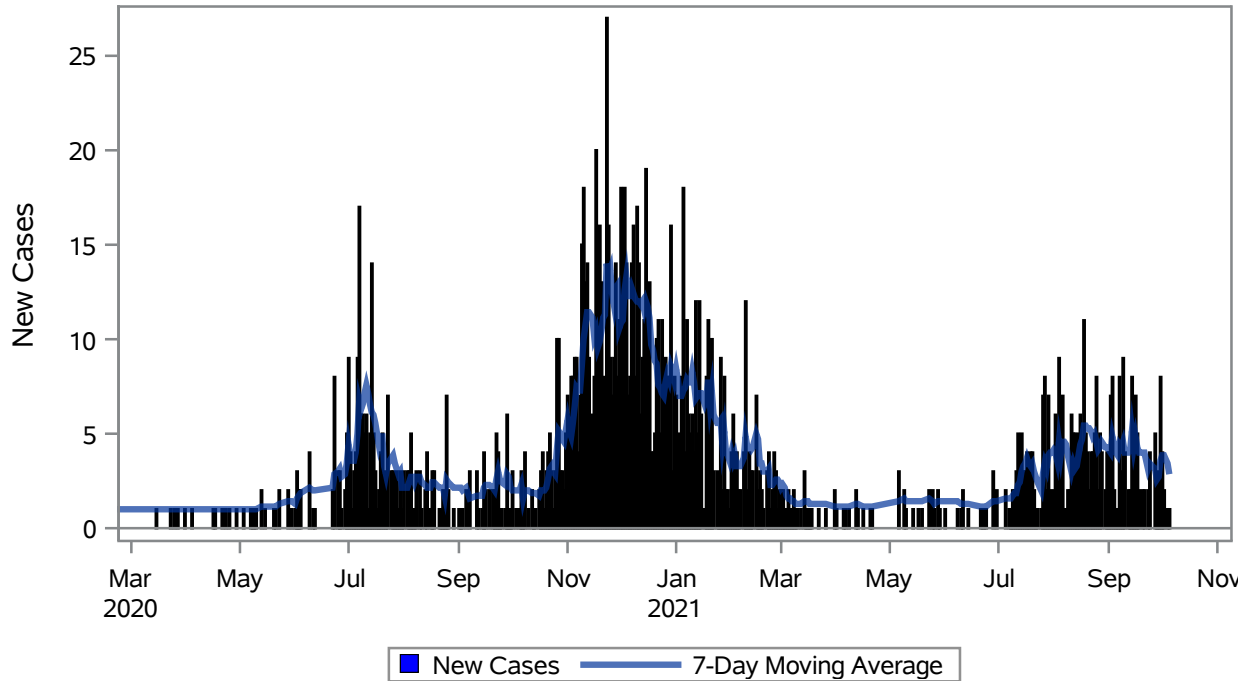


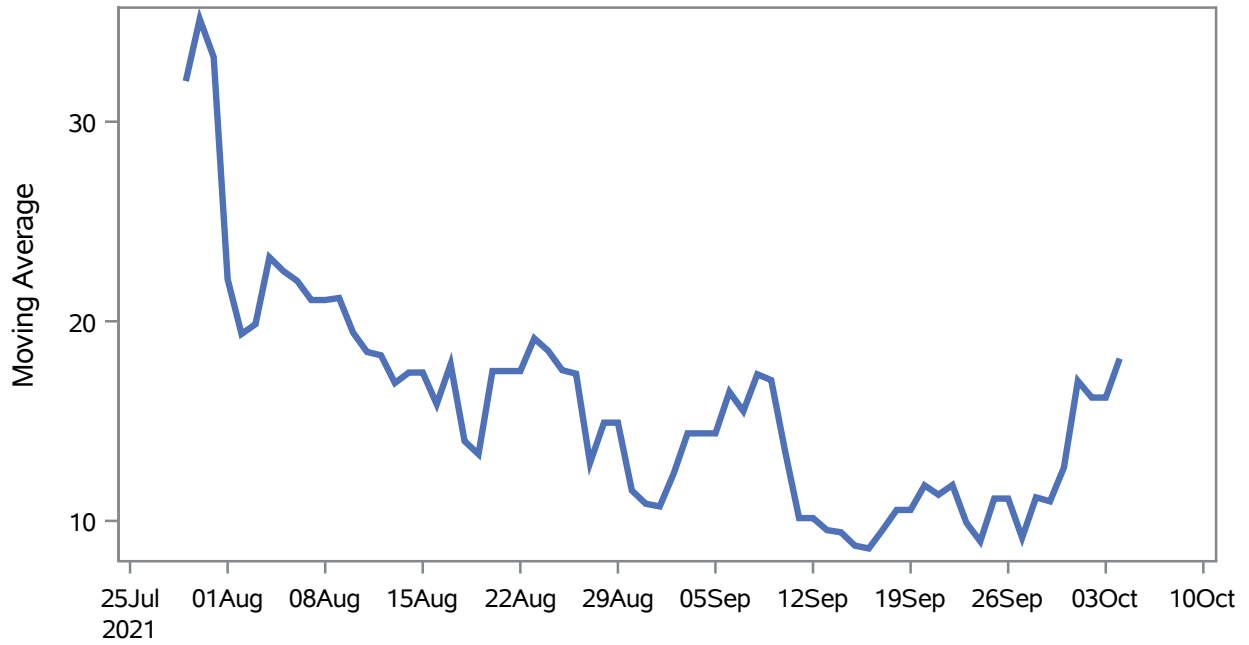
### COVID19 Cases for Mesquite, 7-Day Moving Average



Investigations are ongoing; data are subject to change.  
Reporting through 06OCT2021

Mesquite zip codes include 89027,89034. The U.S. Census Bureau data uses Zip Code Tabulation Area (ZCTA), which does not list 89034 but has incorporated areas of 89034 within 89027 through the American Community Survey (ACS) 5-Year Estimates.

### Percent of People Receiving COVID-19 Viral Tests Who Have Positive Results in Mesquite



Investigations are ongoing; data are subject to change.

Reporting through 06OCT2021

Mesquite zip codes include 89027,89034. The U.S. Census Bureau data uses Zip Code Tabulation Area (ZCTA), which does not list 89034 but has incorporated areas of 89034 within 89027 through the American Community Survey (ACS) 5-Year Estimates.

**Table 1: Age and COVID19 in Mesquite**

Case Status	Age Categories	N	%	Population	Rate per 100,000
Cases	Aged 4 or less	17	1.0	702	2421.7
	Aged 5 to 17	118	7.3	2,217	5322.5
	Aged 18 to 24	166	10.2	938	17697
	Aged 25 to 49	462	28.4	3,386	13644
	Aged 50 to 64	354	21.8	3,371	10501
	Aged 64+	510	31.3	7,290	6995.9
Hospitalizations	Aged 4 or less	1	1.0	702	--
	Aged 5 to 17	1	1.0	2,217	--
	Aged 25 to 49	11	10.8	3,386	--
	Aged 50 to 64	22	21.6	3,371	652.63
	Aged 64+	67	65.7	7,290	919.07
Deaths	Aged 50 to 64	3	8.8	3,371	--
	Aged 64+	31	91.2	7,290	425.24

Note1: Population data source for calculating rate estimates: U.S. Census Bureau, ACS 5-year estimate.

Note2: Rates for categories with fewer than 12 cases are suppressed due to high relative standard error.

Note3: Hospitalizations are regardless of deceased status; Deaths are regardless of hospitalization status

**Investigations are ongoing; data are subject to change.  
Reporting through 06OCT2021**

**Mesquite zip codes include 89027,89034. The U.S. Census Bureau data uses Zip Code Tabulation Area (ZCTA), which does not list 89034 but has incorporated areas of 89034 within 89027 through the American Community Survey (ACS) 5-Year Estimates.**

**Table 2: Race/Ethnicity and COVID19 in Mesquite**

Case Status	Race Ethnicity Categories	N	%	Population	Rate per 100,000
Cases	Hispanic	501	30.8	3,738	13403
	White	808	49.7	13,120	6158.5
	Black	--	--	148	--
	Asian	--	--	486	6172.8
	American Indian/Alaskan Native	--	--	95	--
	Multi-race	--	--	240	--
	Native Hawaiian/Pacific Islander	--	--	30	--
	Unknown	266	16.3	.	.
Hospitalizations	Hispanic	22	21.6	3,738	588.55
	White	66	64.7	13,120	503.05
	Black	--	--	148	--
	Asian	--	--	486	--
	American Indian/Alaskan Native	--	--	95	--
	Multi-race	--	--	240	--
	Native Hawaiian/Pacific Islander	--	--	30	--
	Unknown	6	5.9	.	.
Deaths	Hispanic	2	5.9	3,738	--
	White	29	85.3	13,120	221.04
	Asian	--	--	486	--
	Native Hawaiian/Pacific Islander	--	--	30	--
	Unknown	--	--	.	.

Note1: Population data source for calculating rate estimates: U.S. Census Bureau, ACS 5-year estimate.

Note2: Rates for categories with fewer than 12 cases are suppressed due to high relative standard error. Counts for categories with population less than 500 are suppressed for confidentiality.

Note3: Due to suppression, the total counts per case status may not equal expected totals.

Note4: Hospitalizations are regardless of deceased status; Deaths are regardless of hospitalization status

**Investigations are ongoing; data are subject to change.  
Reporting through 06OCT2021**

**Mesquite zip codes include 89027,89034. The U.S. Census Bureau data uses Zip Code Tabulation Area (ZCTA), which does not list 89034 but has incorporated areas of 89034 within 89027 through the American Community Survey (ACS) 5-Year Estimates.**

**Table 3: Birth Sex and COVID19 in Mesquite**

Case Status	Birth Sex Categories	N	%	Population	Rate per 100,000
Cases	Female	871	53.5	9,111	9559.9
	Male	743	45.7	8,793	8449.9
	Unknown	13	0.8	.	.
Hospitalizations	Female	48	47.1	9,111	526.84
	Male	54	52.9	8,793	614.12
Deaths	Female	12	35.3	9,111	131.71
	Male	22	64.7	8,793	250.20

Note1: Population data source for calculating rate estimates: U.S. Census Bureau, ACS 5-year estimate.

Note2: Rates for categories with fewer than 12 cases are suppressed due to high relative standard error. Counts for categories with population less than 500 are suppressed for confidentiality.

Note3: Hospitalizations are regardless of deceased status; Deaths are regardless of hospitalization status

**Investigations are ongoing; data are subject to change.  
Reporting through 06OCT2021**

**Mesquite zip codes include 89027,89034. The U.S. Census Bureau data uses Zip Code Tabulation Area (ZCTA), which does not list 89034 but has incorporated areas of 89034 within 89027 through the American Community Survey (ACS) 5-Year Estimates.**