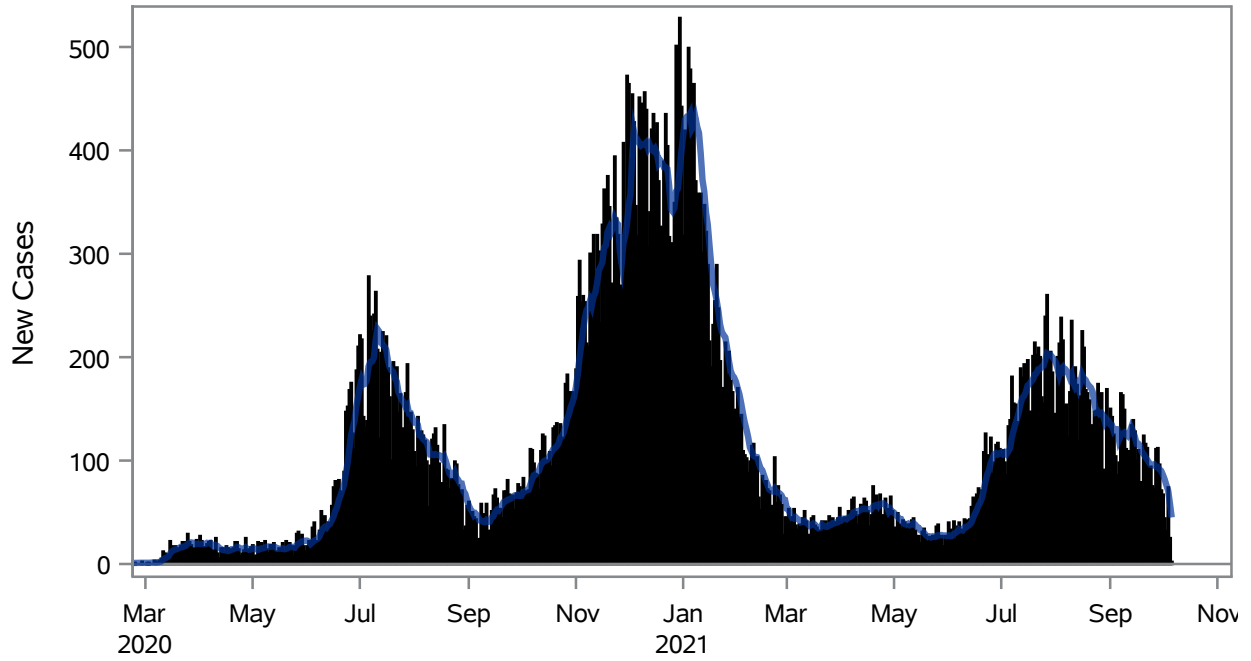


COVID19 Cases for Henderson, 7-Day Moving Average



■ New Cases — 7-Day Moving Average

Investigations are ongoing; data are subject to change.

Reporting through 06OCT2021

Henderson zip codes include 89002, 89011, 89012, 89014, 89015, 89044, 89052, 89074, 89119, 89120, 89122, 89123, 89124, 89183.

Table 1: New COVID19 Cases and 7-Day Moving Average in Henderson, Previous Two Weeks

Date (Daily)	New Cases	7-Day Moving Average
23SEP2021	81	98.29
24SEP2021	94	96.00
25SEP2021	75	95.43
26SEP2021	72	96.29
27SEP2021	111	94.43
28SEP2021	112	93.86
29SEP2021	96	91.57
30SEP2021	71	90.14
01OCT2021	67	86.29
02OCT2021	44	81.86
03OCT2021	32	76.14
04OCT2021	74	70.86

Note1: Event Date is calculated as follows based on completed information:

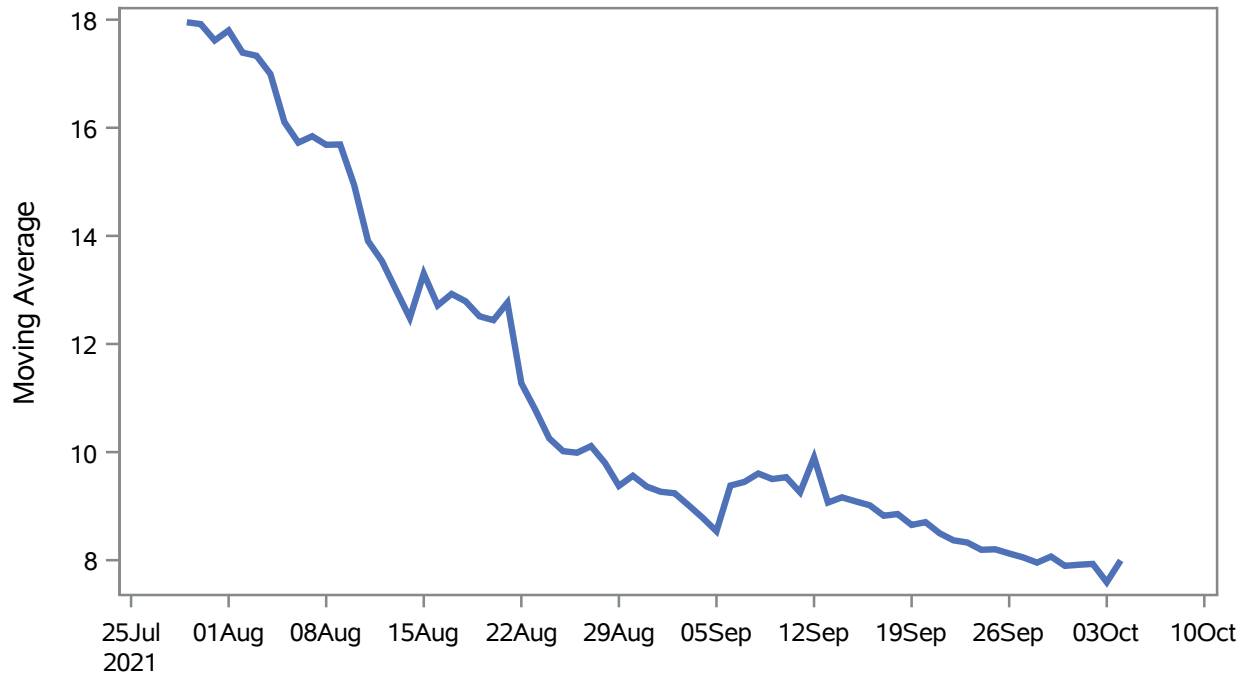
1) Disease onset date 2) Disease diagnosis date 3) Lab result collection date 4) Report date to SNHD.

Investigations are ongoing; data are subject to change.

Reporting through 06OCT2021

Henderson zip codes include 89002, 89011, 89012, 89014, 89015, 89044, 89052, 89074, 89119, 89120, 89122, 89123, 89124, 89183.

Percent of People Receiving COVID-19 Viral Tests Who Have Positive Results in Henderson



Investigations are ongoing; data are subject to change.

Reporting through 06OCT2021

Henderson zip codes include 89002, 89011, 89012, 89014, 89015, 89044, 89052, 89074, 89119, 89120, 89122, 89123, 89124, 89183.

Table 2: Percent of People Receiving COVID-19 Viral Tests Who Have Positive Results in Henderson

Collection Date	Positive	Negative	Equivocal	Total	% Positivity	7-Day Moving Average
20SEP2021	131	1388	3	1523	8.60	8.70
21SEP2021	76	1199	1	1279	5.94	8.50
22SEP2021	102	1671	3	1784	5.72	8.37
23SEP2021	86	1156	2	1250	6.88	8.33
24SEP2021	73	918	5	999	7.31	8.19
25SEP2021	53	448		502	10.56	8.20
26SEP2021	56	414	2	472	11.86	8.12
27SEP2021	112	1269		1383	8.10	8.05
28SEP2021	89	1597	3	1691	5.26	7.96
29SEP2021	100	1430	4	1538	6.50	8.07
30SEP2021	64	1058	1	1127	5.68	7.90
01OCT2021	68	841		913	7.45	7.92
02OCT2021	45	376	1	422	10.66	7.93
03OCT2021	30	286		316	9.49	7.59
04OCT2021	79	641	1	723	10.93	8.00

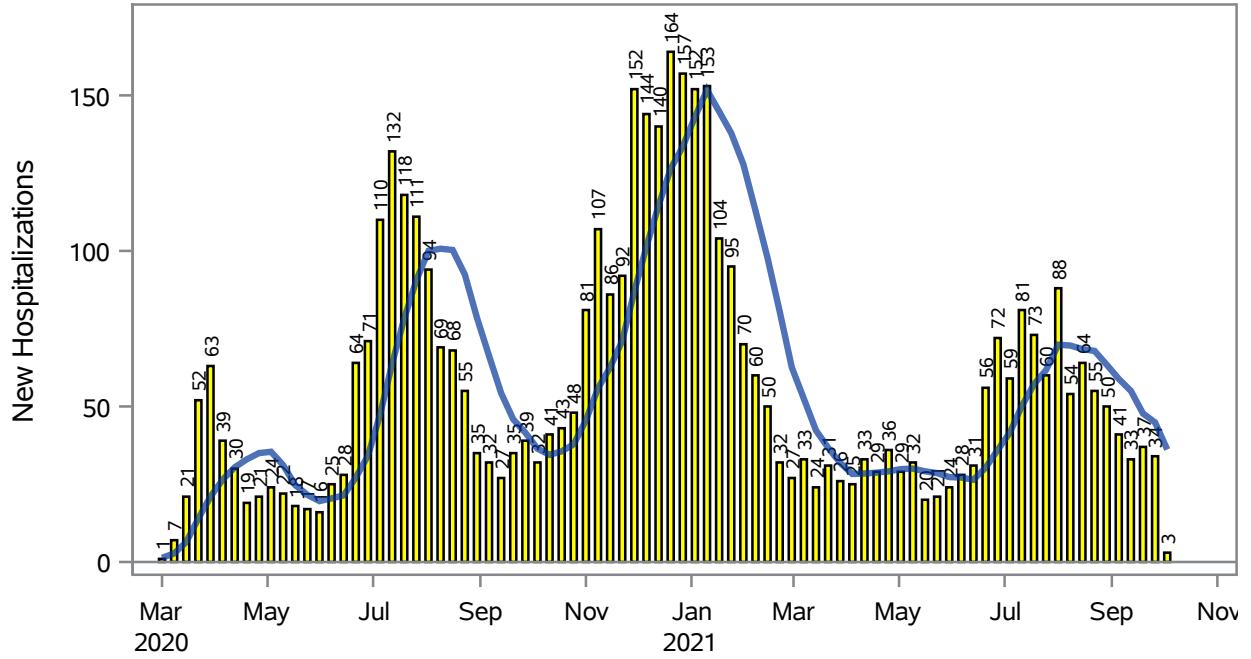
Note: Testing Data includes a 3 day delay

Investigations are ongoing; data are subject to change.

Reporting through 06OCT2021

Henderson zip codes include 89002, 89011, 89012, 89014, 89015, 89044, 89052, 89074, 89119, 89120, 89122, 89123, 89124, 89183.

COVID19 Hospitalizations for Henderson, 7-Day Moving Average



■ New Hospitalizations
 — 7-Day Moving Average

Investigations are ongoing; data are subject to change.

Reporting through 06OCT2021

Henderson zip codes include 89002, 89011, 89012, 89014, 89015, 89044, 89052, 89074, 89119, 89120, 89122, 89123, 89124, 89183.

Table 3: New COVID19-Related Hospitalizations and 7-Day Moving Average in Henderson, previous month

Week	Hospitalizations	7-Day Moving Average
12SEP2021	33	55.0
19SEP2021	37	47.7
26SEP2021	34	44.9
03OCT2021	3	36.1

Note1: Admission Date is calculated as follows based on completed information:
A) COVID19 Case is hospitalized B) COVID19 Case has a hospital admission date.

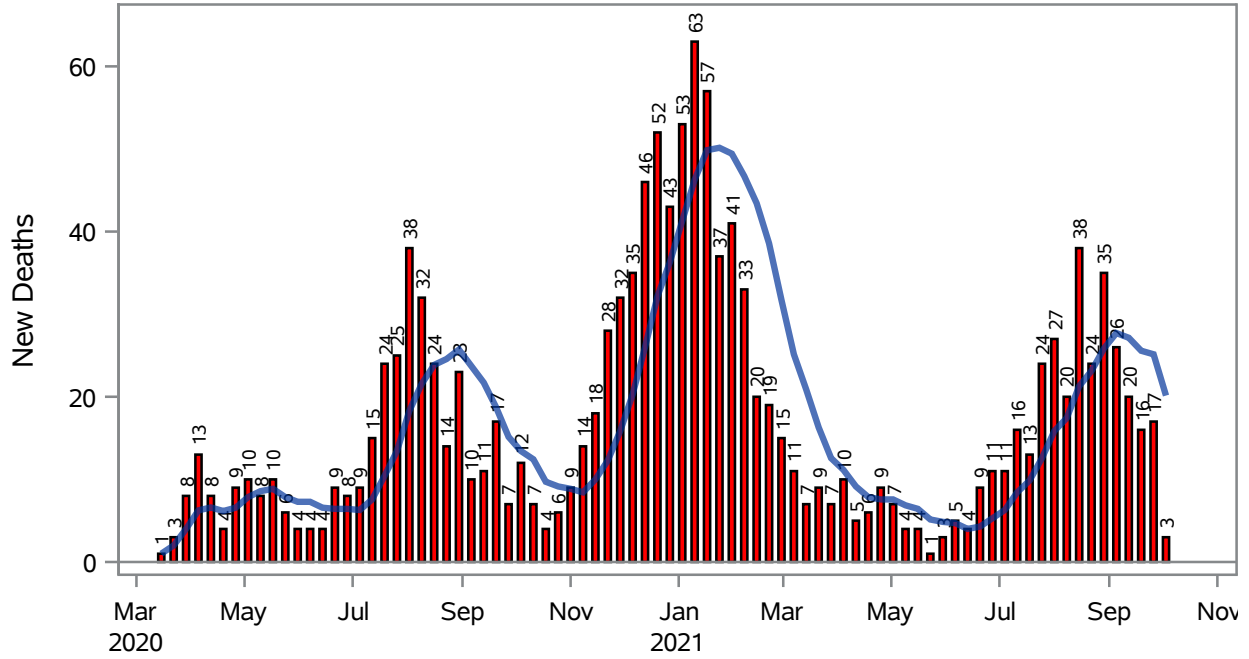
If admission date is missing, then the following is substituted temporarily, in order:
1) Disease onset date 2) Disease diagnosis date 3) Lab result collection date 4) Report date to SNHD.

Investigations are ongoing; data are subject to change.

Reporting through 06OCT2021

Henderson zip codes include 89002, 89011, 89012, 89014, 89015, 89044, 89052, 89074, 89119, 89120, 89122, 89123, 89124, 89183.

COVID19 Deaths for Henderson, 7-Day Moving Average



■ New Deaths — 7-Day Moving Average

Investigations are ongoing; data are subject to change.

Reporting through 06OCT2021

Henderson zip codes include 89002, 89011, 89012, 89014, 89015, 89044, 89052, 89074, 89119, 89120, 89122, 89123, 89124, 89183.

Table 4: New COVID19-Related Deaths and 7-Day Moving Average in Henderson, Previous Month

Week	Deaths	7-Day Moving Average
12SEP2021	20	27.1
19SEP2021	16	25.6
26SEP2021	17	25.1
03OCT2021	3	20.1

Note1: Date of Death is calculated as follows based on completed information:
A) COVID19 Case is reported as deceased B) COVID19 Case has a reported date of death.

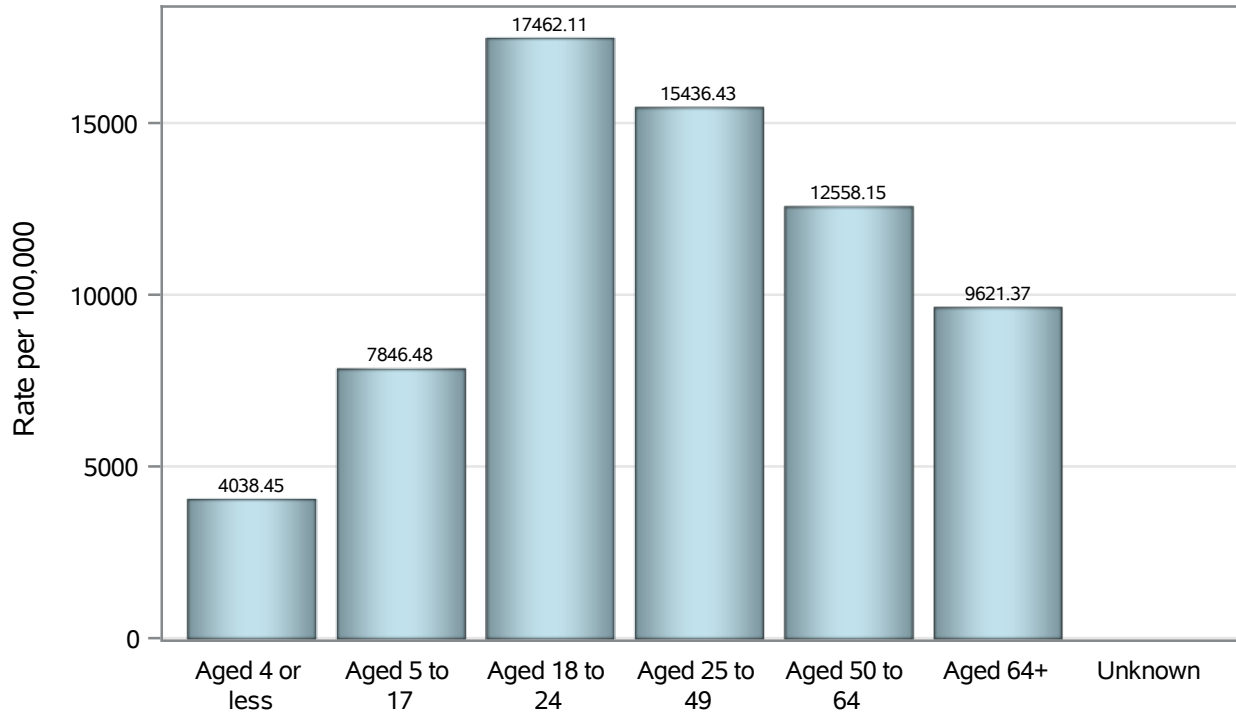
If date of death is missing, then the following is substituted temporarily, in order:
1) Disease onset date 2) Disease diagnosis date
3) Lab result collection date 4) Report date to SNHD.

Investigations are ongoing; data are subject to change.

Reporting through 06OCT2021

Henderson zip codes include 89002, 89011, 89012, 89014, 89015, 89044, 89052, 89074, 89119, 89120, 89122, 89123, 89124, 89183.

Case Age Rates in Henderson

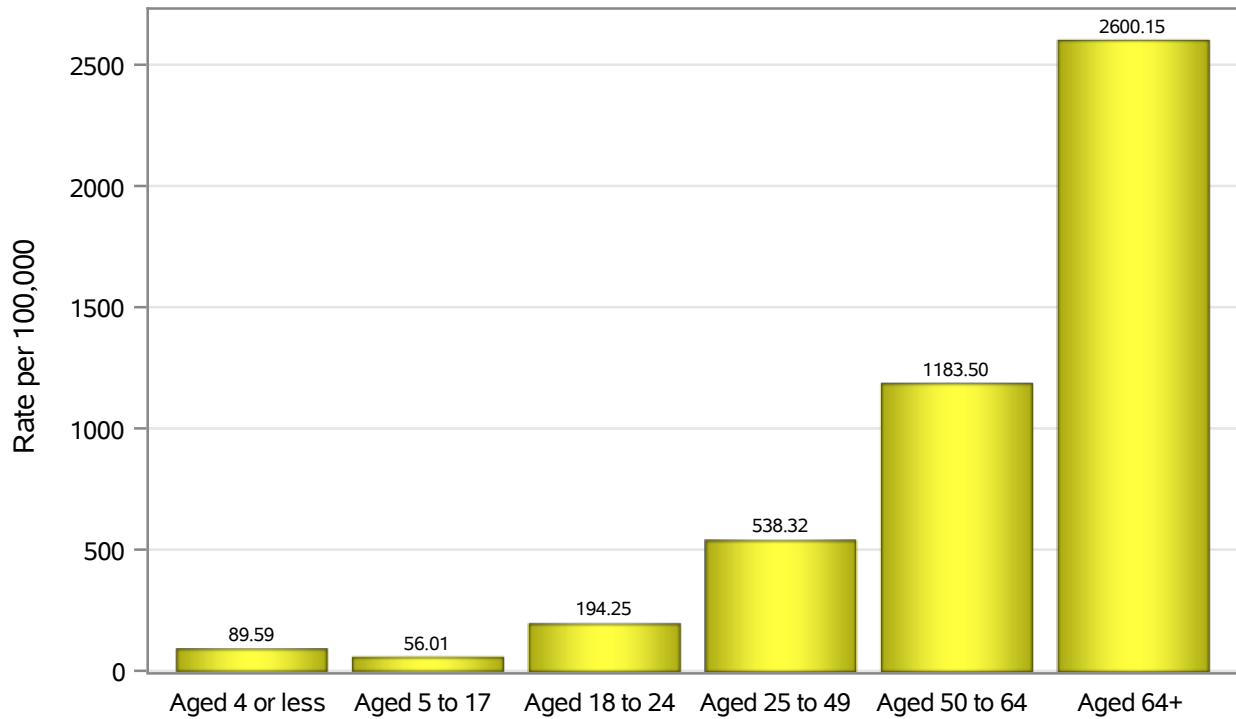


Investigations are ongoing; data are subject to change.

Reporting through 06OCT2021

Henderson zip codes include 89002, 89011, 89012, 89014, 89015, 89044, 89052, 89074, 89119, 89120, 89122, 89123, 89124, 89183.

Hospitalization Age Rates in Henderson

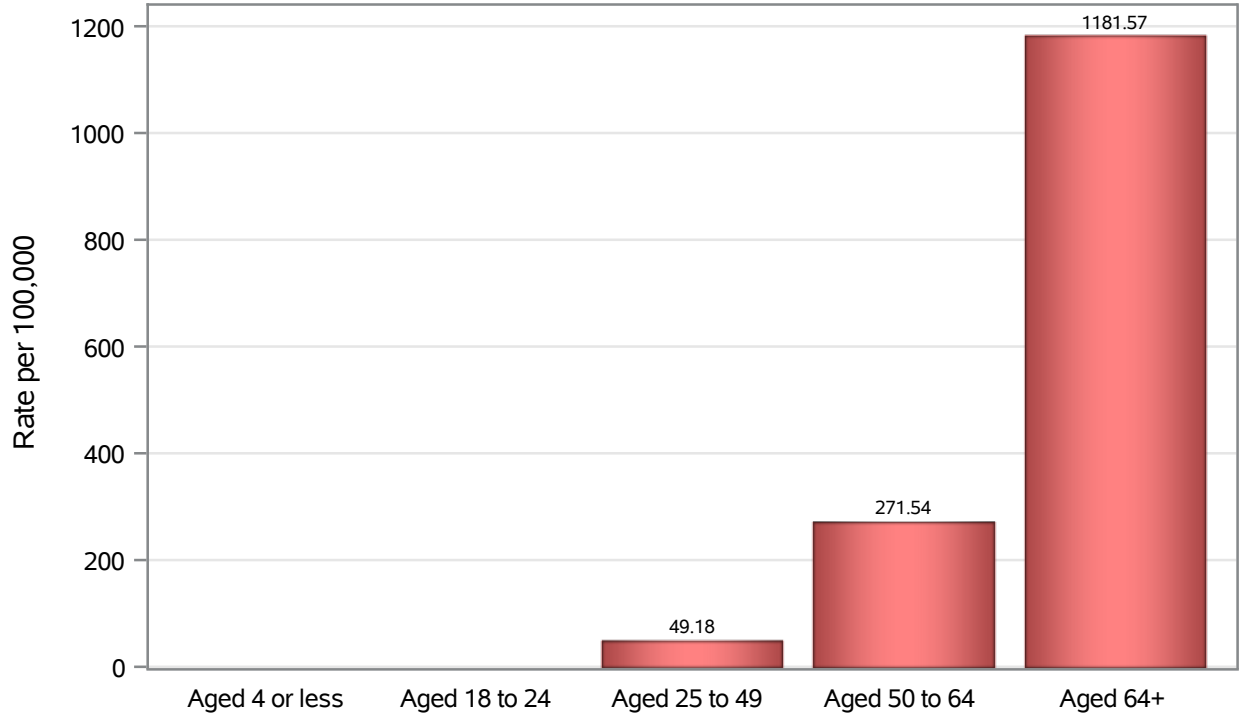


Investigations are ongoing; data are subject to change.

Reporting through 06OCT2021

Henderson zip codes include 89002, 89011, 89012, 89014, 89015, 89044, 89052, 89074, 89119, 89120, 89122, 89123, 89124, 89183.

Death Age Rates in Henderson



Investigations are ongoing; data are subject to change.

Reporting through 06OCT2021

Henderson zip codes include 89002, 89011, 89012, 89014, 89015, 89044, 89052, 89074, 89119, 89120, 89122, 89123, 89124, 89183.

Table 5: Age and COVID19 in Henderson

Case Status	Age Categories	N	%	Population	Rate per 100,000
Cases	Aged 4 or less	1172	1.8	29,021	4038.5
	Aged 5 to 17	6444	9.8	82,126	7846.5
	Aged 18 to 24	7731	11.8	44,273	17462
	Aged 25 to 49	28876	44.1	187064	15436
	Aged 50 to 64	12903	19.7	102746	12558
	Aged 64+	8322	12.7	86,495	9621.4
	Unknown	13	0.0	.	.
Hospitalizations	Aged 4 or less	26	0.6	29,021	89.59
	Aged 5 to 17	46	1.0	82,126	56.01
	Aged 18 to 24	86	1.9	44,273	194.25
	Aged 25 to 49	1007	21.7	187064	538.32
	Aged 50 to 64	1216	26.3	102746	1183.5
	Aged 64+	2249	48.6	86,495	2600.2
Deaths	Aged 4 or less	1	0.1	29,021	.
	Aged 18 to 24	1	0.1	44,273	.
	Aged 25 to 49	92	6.6	187064	49.18
	Aged 50 to 64	279	20.0	102746	271.54
	Aged 64+	1022	73.3	86,495	1181.6

Note1: Population data source for calculating rate estimates: U.S. Census Bureau, ACS 5-year estimate.

Note2: Rates for categories with fewer than 12 cases are suppressed due to high relative standard error.

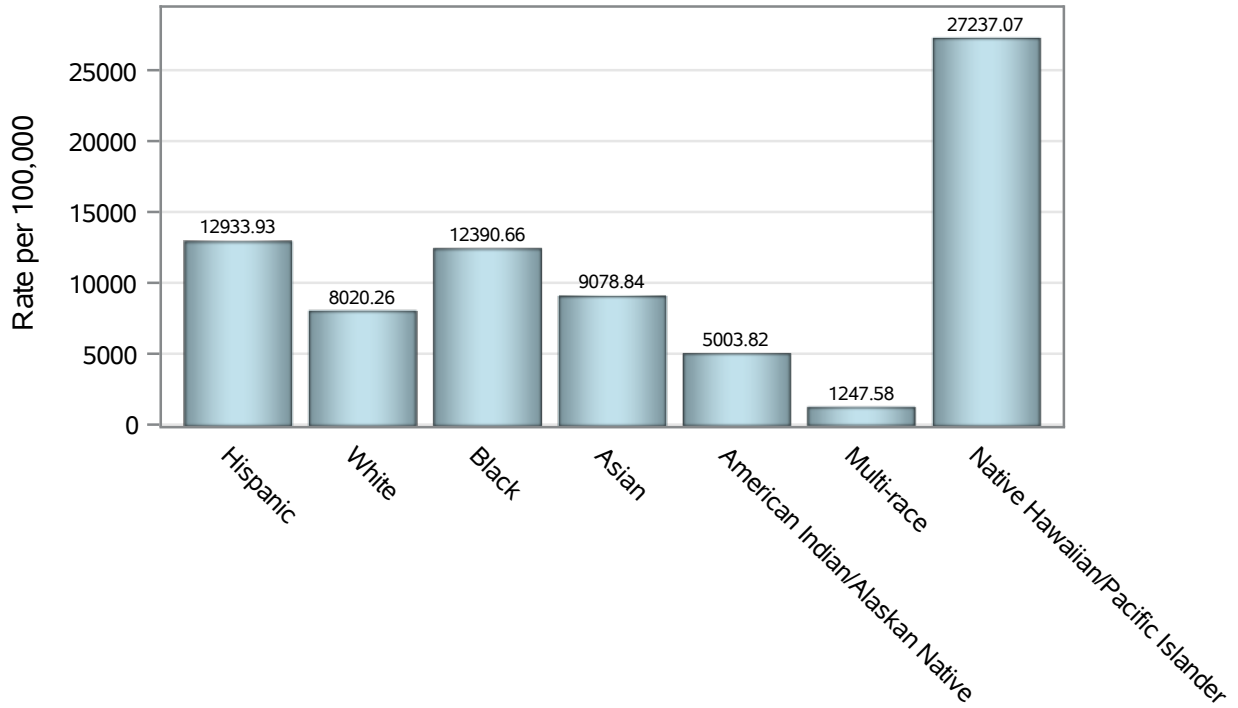
Note3: Hospitalizations are regardless of deceased status; Deaths are regardless of hospitalization status

Investigations are ongoing; data are subject to change.

Reporting through 06OCT2021

Henderson zip codes include 89002, 89011, 89012, 89014, 89015, 89044, 89052, 89074, 89119, 89120, 89122, 89123, 89124, 89183.

Case Race/Ethnicity Rates in Henderson

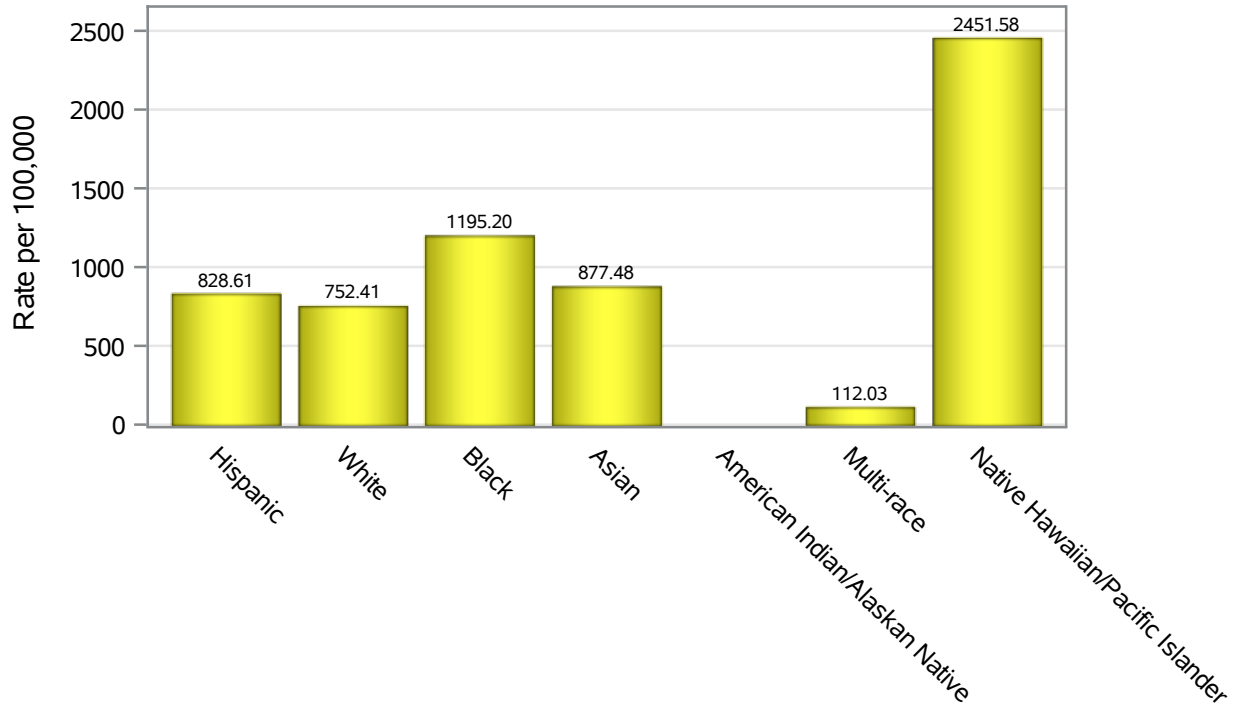


Investigations are ongoing; data are subject to change.

Reporting through 06OCT2021

Henderson zip codes include 89002, 89011, 89012, 89014, 89015, 89044, 89052, 89074, 89119, 89120, 89122, 89123, 89124, 89183.

Hospitalization Race/Ethnicity Rates in Henderson

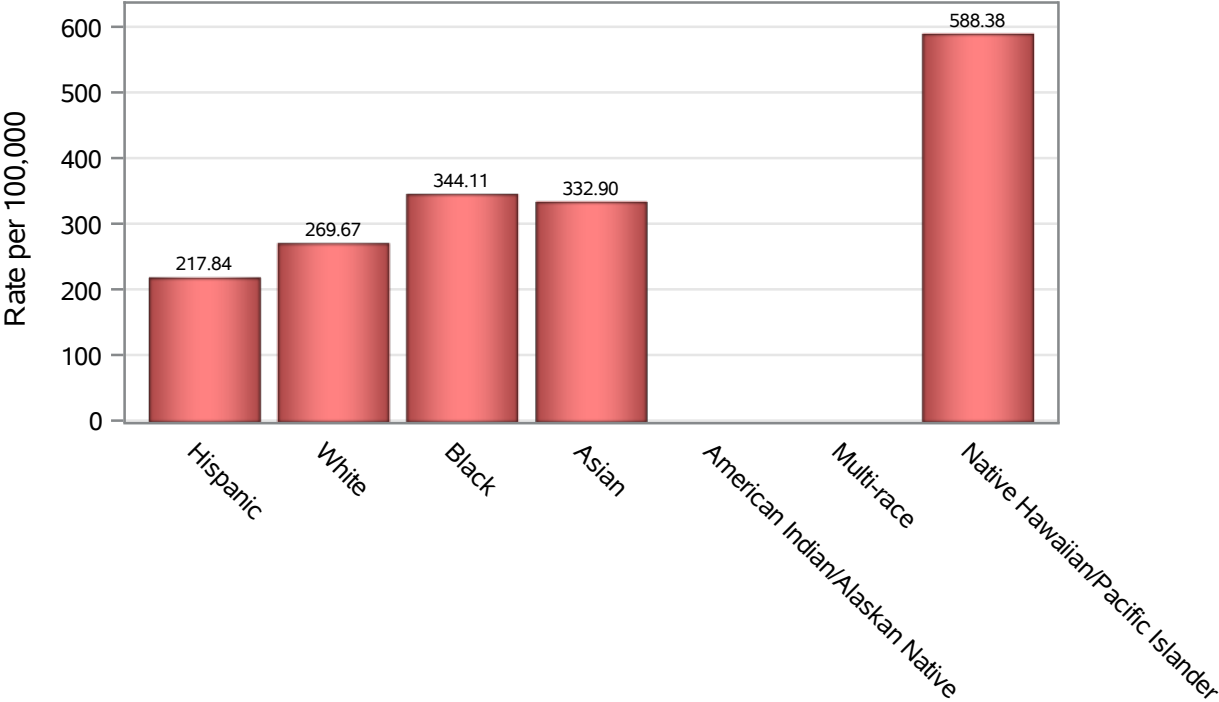


Investigations are ongoing; data are subject to change.

Reporting through 06OCT2021

Henderson zip codes include 89002, 89011, 89012, 89014, 89015, 89044, 89052, 89074, 89119, 89120, 89122, 89123, 89124, 89183.

Death Race/Ethnicity Rates in Henderson



Investigations are ongoing; data are subject to change.

Reporting through 06OCT2021

Henderson zip codes include 89002, 89011, 89012, 89014, 89015, 89044, 89052, 89074, 89119, 89120, 89122, 89123, 89124, 89183.

Table 6: Race/Ethnicity and COVID19 in Henderson

Case Status	Race Ethnicity Categories	N	%	Population	Rate per 100,000
Cases	Hispanic	15734	24.0	121649	12934
	White	23376	35.7	291462	8020.3
	Black	4717	7.2	38,069	12391
	Asian	4718	7.2	51,967	9078.8
	American Indian/Alaskan Native	131	0.2	2,618	5003.8
	Multi-race	245	0.4	19,638	1247.6
	Native Hawaiian/Pacific Islander	1111	1.7	4,079	27237
	Unknown	15429	23.6	.	.
Hospitalizations	Hispanic	1008	21.8	121649	828.61
	White	2193	47.4	291462	752.41
	Black	455	9.8	38,069	1195.2
	Asian	456	9.8	51,967	877.48
	American Indian/Alaskan Native	8	0.2	2,618	.
	Multi-race	22	0.5	19,638	112.03
	Native Hawaiian/Pacific Islander	100	2.2	4,079	2451.6
	Unknown	388	8.4	.	.
Deaths	Hispanic	265	19.0	121649	217.84
	White	786	56.3	291462	269.67
	Black	131	9.4	38,069	344.11
	Asian	173	12.4	51,967	332.90
	American Indian/Alaskan Native	2	0.1	2,618	.
	Multi-race	8	0.6	19,638	.
	Native Hawaiian/Pacific Islander	24	1.7	4,079	588.38
	Unknown	6	0.4	.	.

Note1: Population data source for calculating rate estimates: U.S. Census Bureau, ACS 5-year estimate.

Note2: Rates for categories with fewer than 12 cases are suppressed due to high relative standard error.

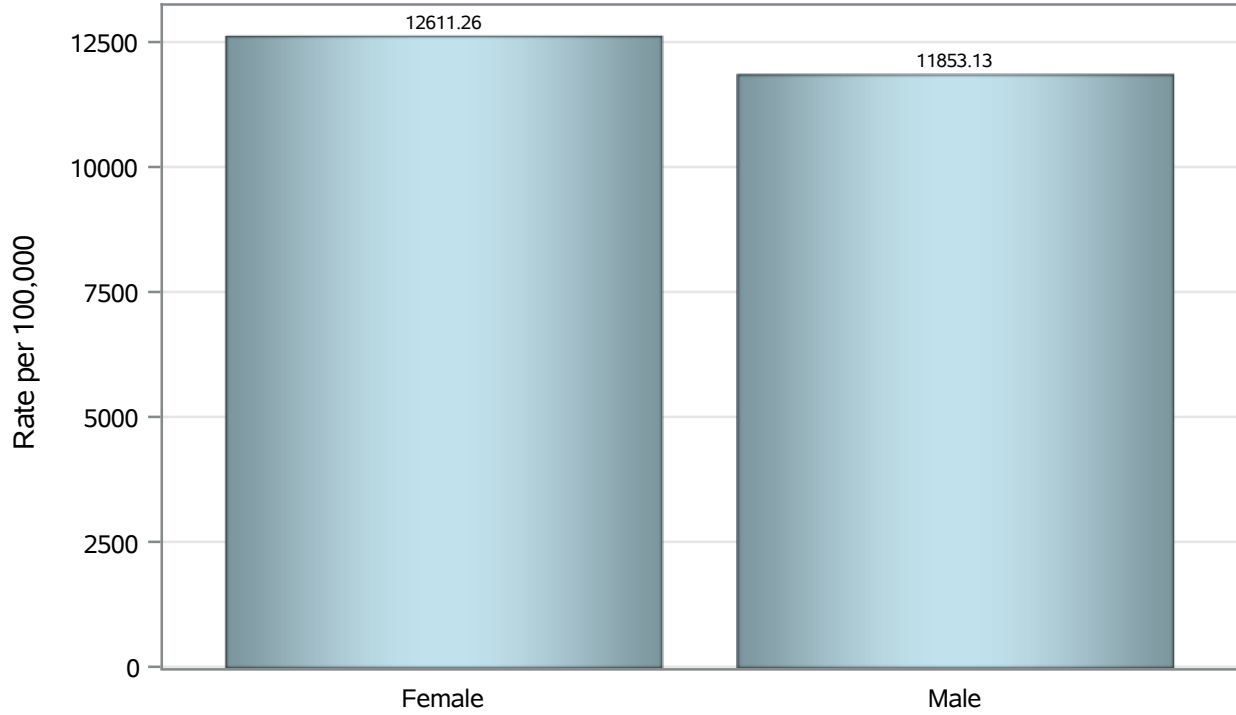
Note3: Hospitalizations are regardless of deceased status; Deaths are regardless of hospitalization status

Investigations are ongoing; data are subject to change.

Reporting through 06OCT2021

Henderson zip codes include 89002, 89011, 89012, 89014, 89015, 89044, 89052, 89074, 89119, 89120, 89122, 89123, 89124, 89183.

Case Birth Sex Rates in Henderson

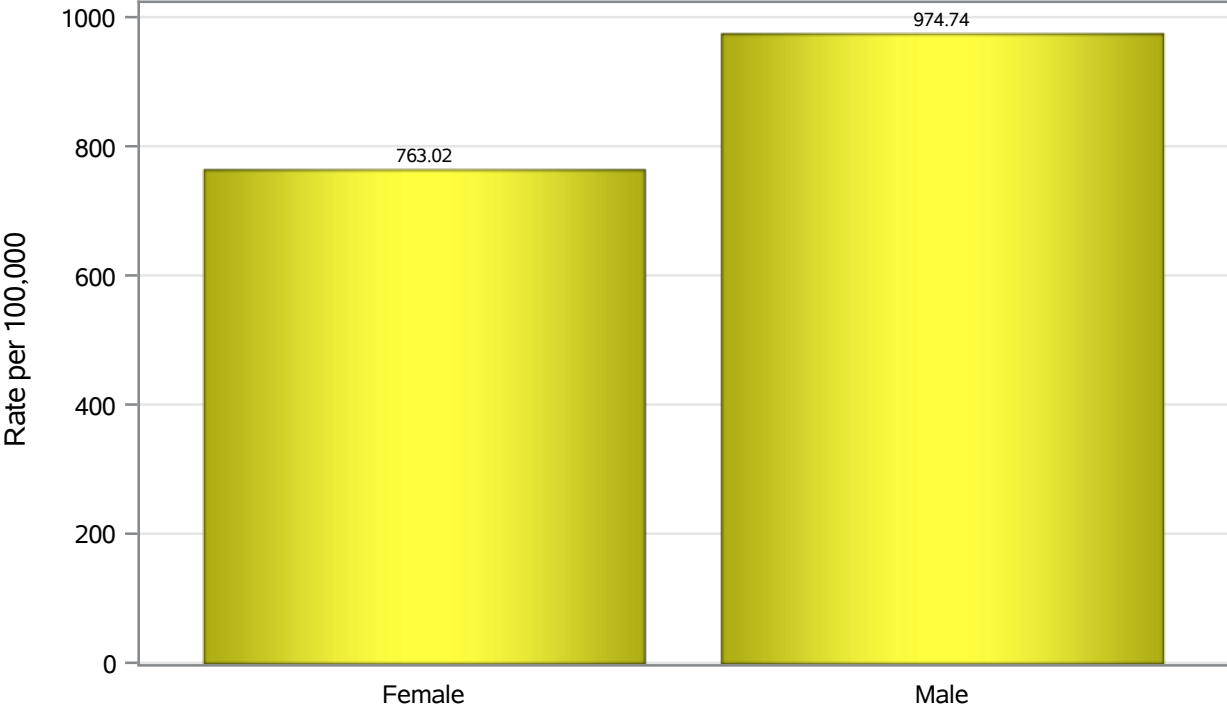


Investigations are ongoing; data are subject to change.

Reporting through 06OCT2021

Henderson zip codes include 89002, 89011, 89012, 89014, 89015, 89044, 89052, 89074, 89119, 89120, 89122, 89123, 89124, 89183.

Hospitalization Birth Sex Rates in Henderson

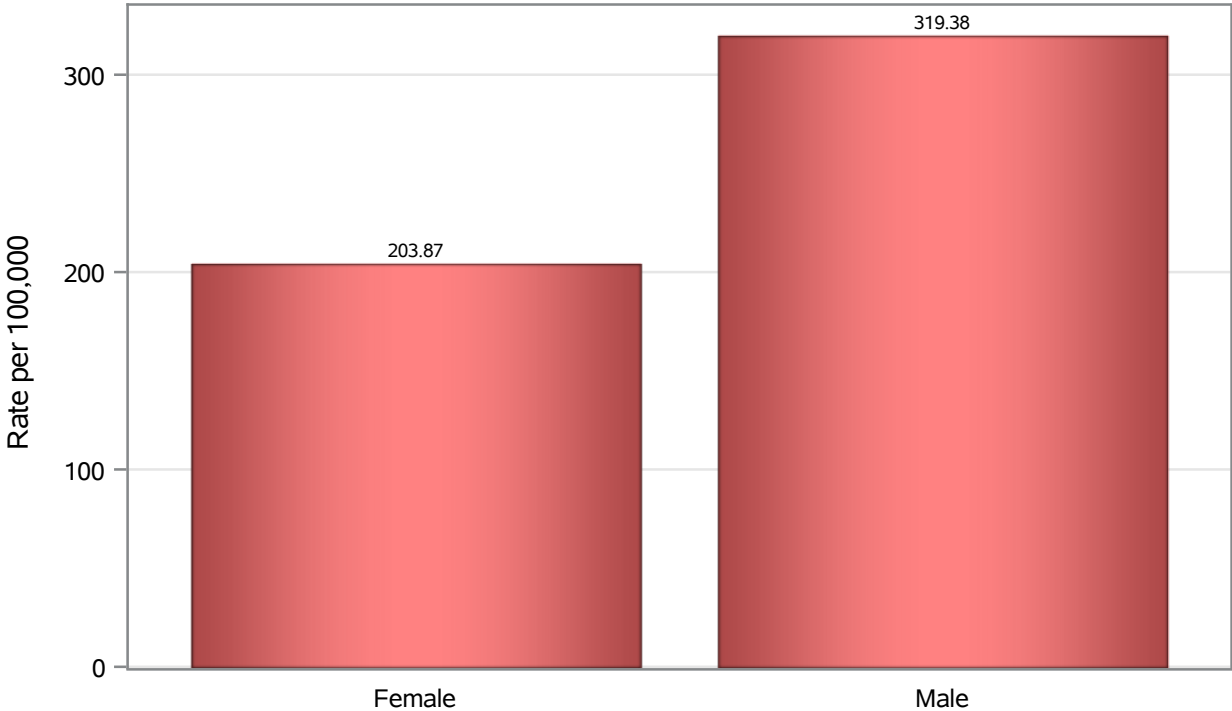


Investigations are ongoing; data are subject to change.

Reporting through 06OCT2021

Henderson zip codes include 89002, 89011, 89012, 89014, 89015, 89044, 89052, 89074, 89119, 89120, 89122, 89123, 89124, 89183.

Death Birth Sex Rates in Henderson



Investigations are ongoing; data are subject to change.

Reporting through 06OCT2021

Henderson zip codes include 89002, 89011, 89012, 89014, 89015, 89044, 89052, 89074, 89119, 89120, 89122, 89123, 89124, 89183.

Table 7: Birth Sex and COVID19 in Henderson

Case Status	Birth Sex Categories	N	%	Population	Rate per 100,000
Cases	Female	33651	51.4	266833	12611
	Male	31398	48.0	264892	11853
	Unknown	412	0.6	.	.
Hospitalizations	Female	2036	44.0	266833	763.02
	Male	2582	55.8	264892	974.74
	Unknown	12	0.3	.	.
Deaths	Female	544	39.0	266833	203.87
	Male	846	60.6	264892	319.38
	Unknown	5	0.4	.	.

Note1: Population data source for calculating rate estimates: U.S. Census Bureau, ACS 5-year estimate.

Note2: Rates for categories with fewer than 12 cases are suppressed due to high relative standard error.

Note3: Hospitalizations are regardless of deceased status; Deaths are regardless of hospitalization status

Investigations are ongoing; data are subject to change.

Reporting through 06OCT2021

Henderson zip codes include 89002, 89011, 89012, 89014, 89015, 89044, 89052, 89074, 89119, 89120, 89122, 89123, 89124, 89183.