

COVID-19 Trends

Clark County, Nevada

Document creation date: October 24, 2021

- General notes: This report uses surveillance data collected by the Southern Nevada Health District. Due to delays related to laboratory processing, reporting, and case investigations, data from the most recent days are less complete than data from older time points. For this reason, as of June 10, 2020 this report will not display data from the previous three days prior to the date that the report was created. As many case investigations are ongoing, all data presented in this report are considered preliminary and subject to change. Data regarding cases, hospitalizations, deaths, and labs were last updated October 24, 2021 at 12:00 AM, and data is reported up through October 20, 2021.
- Cases: Symptom onset date was used for aggregating cases. If symptom onset date was missing, the following dates were substituted in this order: diagnosis date, lab collection date, report date (date case was reported to SNHD), event creation date (date case was entered into TriSano, SNHD's surveillance system).
- Hospitalizations: Admission date was used for aggregating hospitalizations. If admission date was missing, report date was substituted. If a person had more than one hospitalization after his/her COVID-19 diagnosis, only the first admission date was used.
- Deaths: Date of death was used for aggregating deaths. If date of death was missing, report date was used.
- For the "7-Day Average of Daily New Cases per 100K, by Age Group (Years)" graph and table, the population data source for calculating rate estimates was from Nevada State Demographer "2019 ASRHO Estimates and Projections Summary 2000 to 2038", 2020 projection, vintage 2019. Rates for individual age categories may be based on small numbers, which may give unstable estimates.
- All graphs in this report show data from approximately 60 days prior to the date of the report.
- All tables show data from the last 14 days before the current date, with the exception of the "Percent Change in Weekly Totals from Previous Week", which displays data from the previous eight completed weeks.
- For the "Percent of People Receiving COVID-19 Viral Tests Who Have Positive Results" graph, one person who has multiple specimens collected in one day is only reported once. If any test of that person is positive, that person counts as a positive result. If all tests of that individual are negative, that person counts as a negative result. Laboratory tests were included if they were a test assessing for the presence of SARS-CoV-2 viral RNA, for example PCR tests. Antibody tests were excluded.

COVID-19 Cases

Clark County, NV

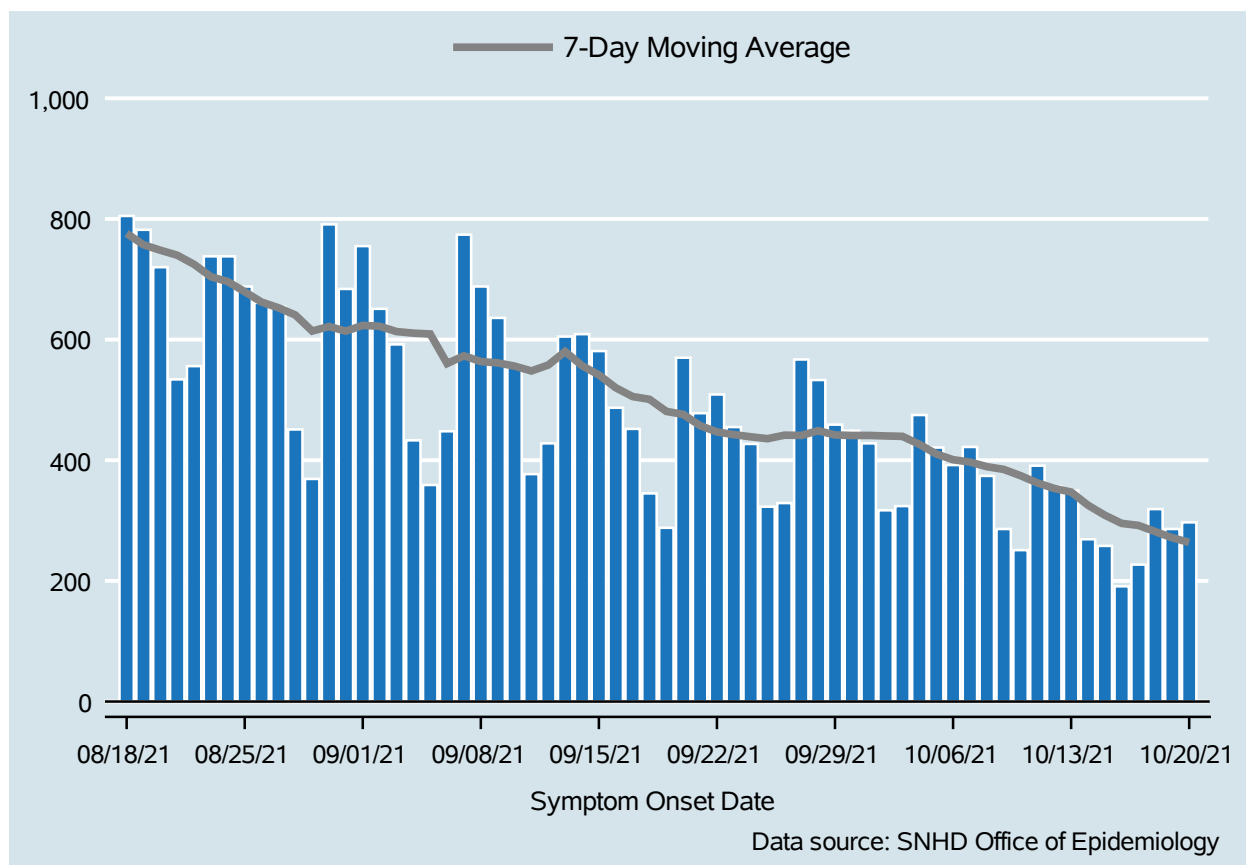


Table 1: COVID-19 Cases per Day, Clark County, NV

Date	Cases Per Day	7-Day Moving Average
Oct 07	422	397.0
Oct 08	374	389.3
Oct 09	286	384.9
Oct 10	251	374.4
Oct 11	391	362.4
Oct 12	357	353.3
Oct 13	350	347.3
Oct 14	269	325.4
Oct 15	258	308.9
Oct 16	191	295.3
Oct 17	227	291.9
Oct 18	319	281.6
Oct 19	286	271.4
Oct 20	297	263.9

COVID-19 Hospitalizations

Clark County, NV

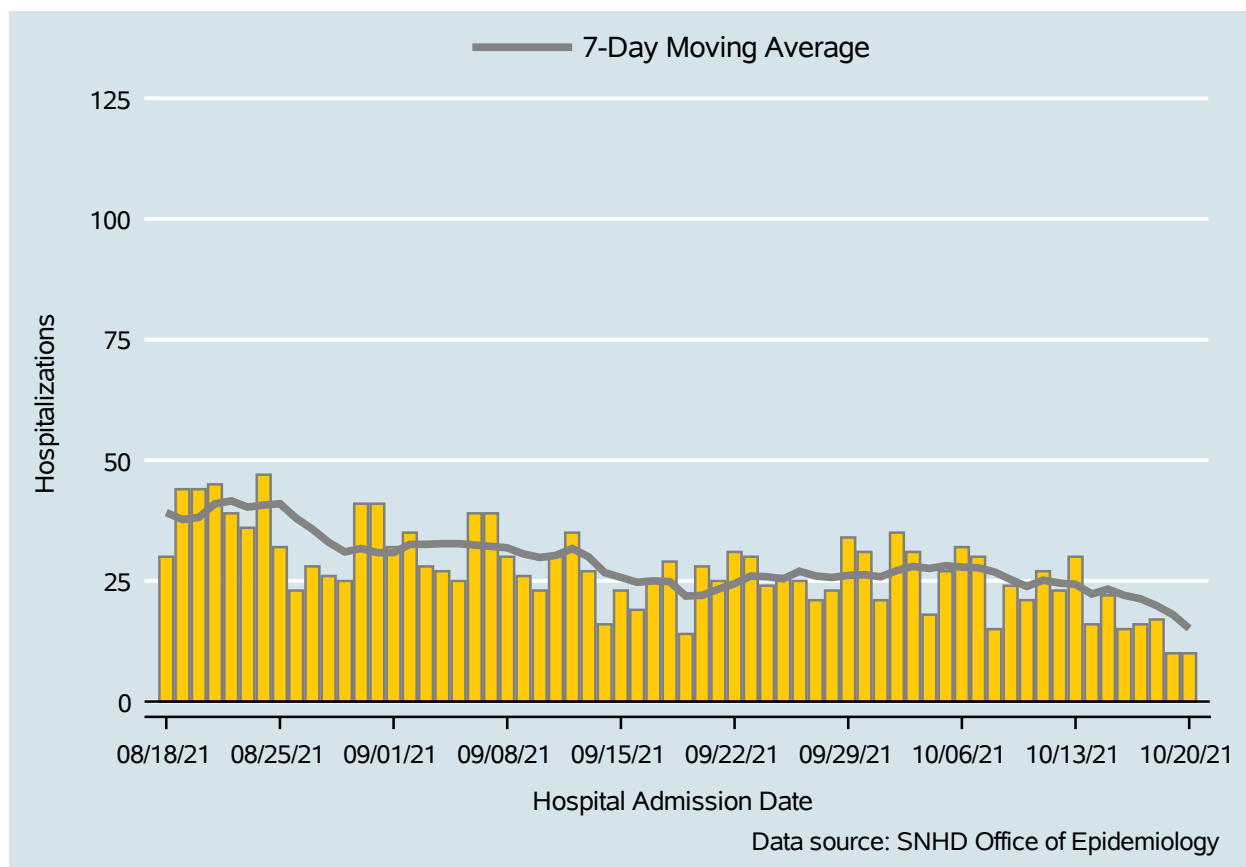


Table 2: COVID-19 Hospitalizations per Day, Clark County, NV

Date	Hospitalizations Per Day	7-Day Moving Average
Oct 07	30	27.7
Oct 08	15	26.9
Oct 09	24	25.3
Oct 10	21	23.9
Oct 11	27	25.1
Oct 12	23	24.6
Oct 13	30	24.3
Oct 14	16	22.3
Oct 15	22	23.3
Oct 16	15	22.0
Oct 17	16	21.3
Oct 18	17	19.9
Oct 19	10	18.0
Oct 20	10	15.1

COVID-19 Deaths

Clark County, NV

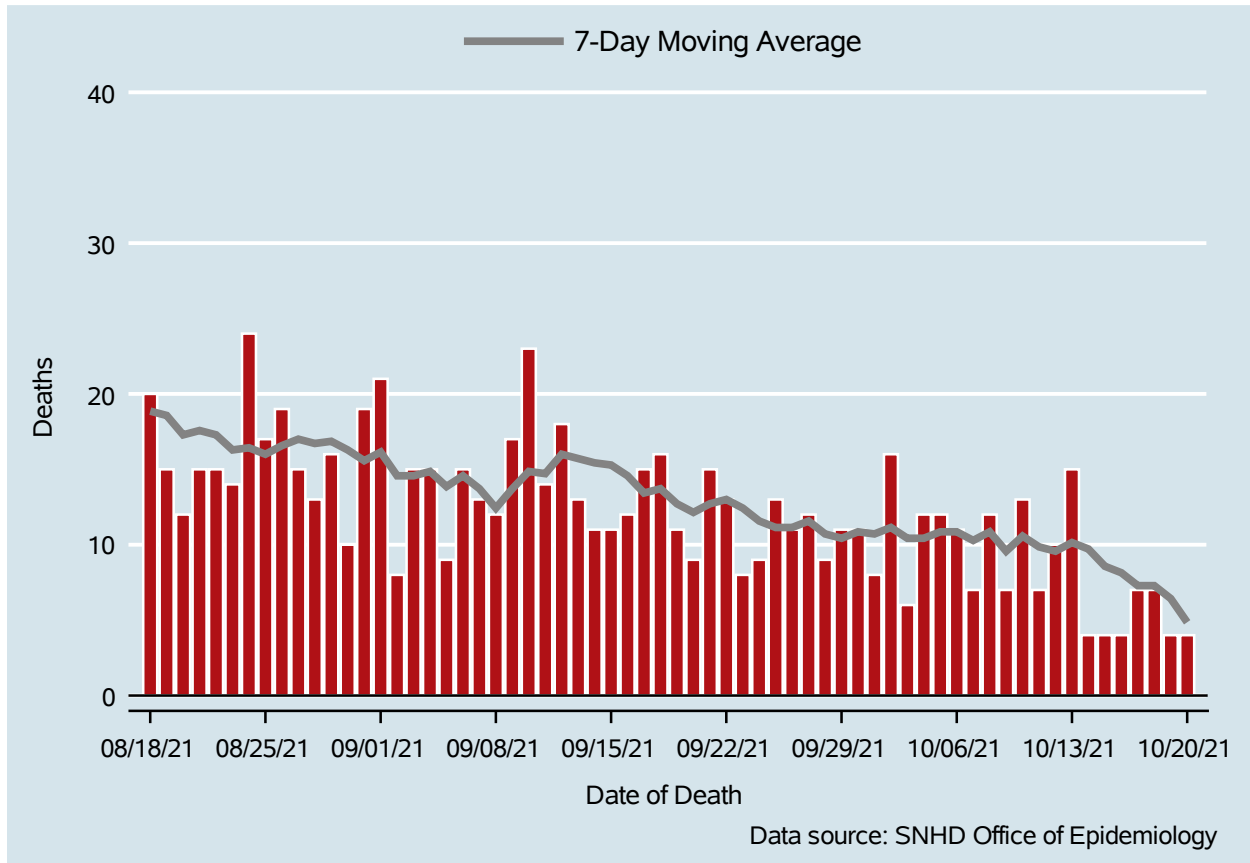


Table 3: COVID-19 Deaths per Day, Clark County, NV

Date	Deaths Per Day	7-Day Moving Average
Oct 07	7	10.3
Oct 08	12	10.9
Oct 09	7	9.6
Oct 10	13	10.6
Oct 11	7	9.9
Oct 12	10	9.6
Oct 13	15	10.1
Oct 14	4	9.7
Oct 15	4	8.6
Oct 16	4	8.1
Oct 17	7	7.3
Oct 18	7	7.3
Oct 19	4	6.4
Oct 20	4	4.9

7-Day Average of Daily New Cases per 100K, by Age Group (Years)

Clark County, NV

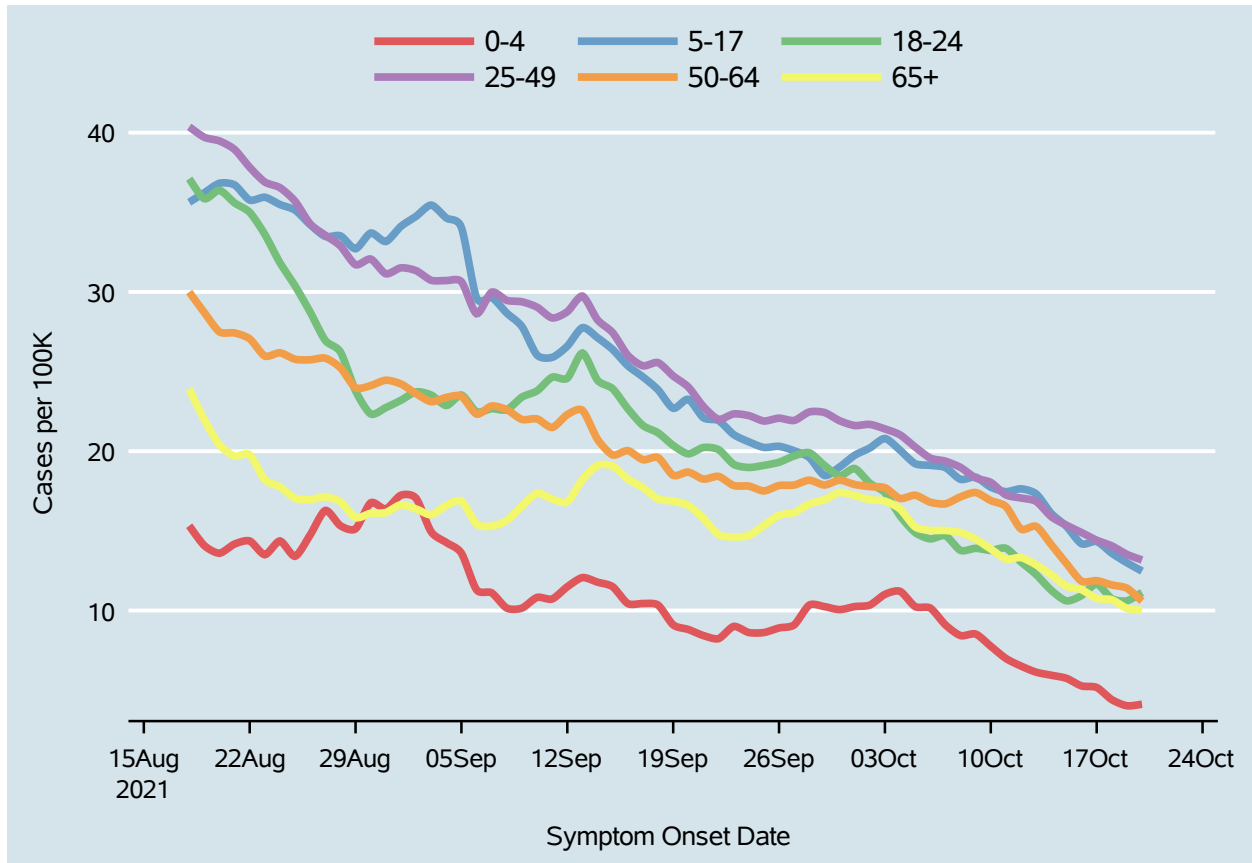
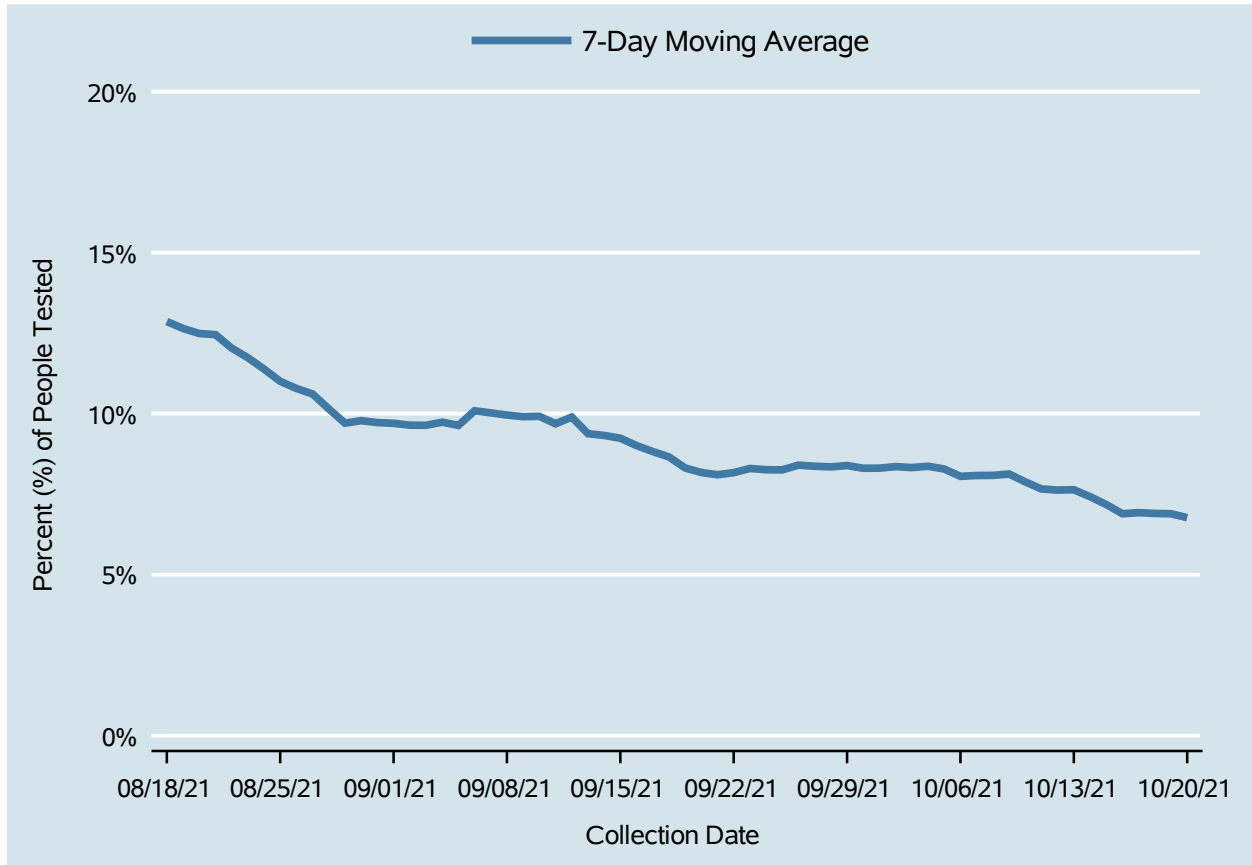


Table 4: 7-Day Average of Daily New Cases per 100K, by Age Group (Years)

Date	0-4	5-17	18-24	25-49	50-64	65+
Oct 07	9.1	19.0	14.7	19.4	16.7	15.0
Oct 08	8.4	18.2	13.8	19.0	17.1	14.9
Oct 09	8.5	18.4	13.9	18.3	17.4	14.5
Oct 10	7.8	17.7	13.8	18.0	16.9	13.9
Oct 11	7.0	17.5	13.9	17.3	16.5	13.2
Oct 12	6.5	17.6	13.0	17.1	15.1	13.3
Oct 13	6.1	17.3	12.3	16.8	15.3	12.9
Oct 14	5.9	16.1	11.3	15.9	14.1	12.2
Oct 15	5.7	15.3	10.6	15.4	13.0	11.5
Oct 16	5.3	14.2	10.9	14.9	11.8	11.3
Oct 17	5.2	14.3	11.7	14.4	11.9	10.8
Oct 18	4.4	13.6	10.7	14.1	11.6	10.7
Oct 19	4.0	13.0	10.6	13.5	11.4	10.1
Oct 20	4.1	12.5	11.1	13.2	10.6	10.0

Percent of People Receiving COVID-19 Viral Tests Who Have Positive Results

Clark County, NV



Report prepared by: Kellie Watkins, PhD, MS, Ying Zhang, PhD, MPH (Office of Epidemiology) and Lei Zhang, MS (Office of Informatics)