

# COVID-19 Trends

Clark County, Nevada

Document creation date: October 17, 2021

- General notes: This report uses surveillance data collected by the Southern Nevada Health District. Due to delays related to laboratory processing, reporting, and case investigations, data from the most recent days are less complete than data from older time points. For this reason, as of June 10, 2020 this report will not display data from the previous three days prior to the date that the report was created. As many case investigations are ongoing, all data presented in this report are considered preliminary and subject to change. Data regarding cases, hospitalizations, deaths, and labs were last updated October 17, 2021 at 12:00 AM, and data is reported up through October 13, 2021.
- Cases: Symptom onset date was used for aggregating cases. If symptom onset date was missing, the following dates were substituted in this order: diagnosis date, lab collection date, report date (date case was reported to SNHD), event creation date (date case was entered into TriSano, SNHD's surveillance system).
- Hospitalizations: Admission date was used for aggregating hospitalizations. If admission date was missing, report date was substituted. If a person had more than one hospitalization after his/her COVID-19 diagnosis, only the first admission date was used.
- Deaths: Date of death was used for aggregating deaths. If date of death was missing, report date was used.
- For the "7-Day Average of Daily New Cases per 100K, by Age Group (Years)" graph and table, the population data source for calculating rate estimates was from Nevada State Demographer "2019 ASRHO Estimates and Projections Summary 2000 to 2038", 2020 projection, vintage 2019. Rates for individual age categories may be based on small numbers, which may give unstable estimates.
- All graphs in this report show data from approximately 60 days prior to the date of the report.
- All tables show data from the last 14 days before the current date, with the exception of the "Percent Change in Weekly Totals from Previous Week", which displays data from the previous eight completed weeks.
- For the "Percent of People Receiving COVID-19 Viral Tests Who Have Positive Results" graph, one person who has multiple specimens collected in one day is only reported once. If any test of that person is positive, that person counts as a positive result. If all tests of that individual are negative, that person counts as a negative result. Laboratory tests were included if they were a test assessing for the presence of SARS-CoV-2 viral RNA, for example PCR tests. Antibody tests were excluded.

# COVID-19 Cases

Clark County, NV

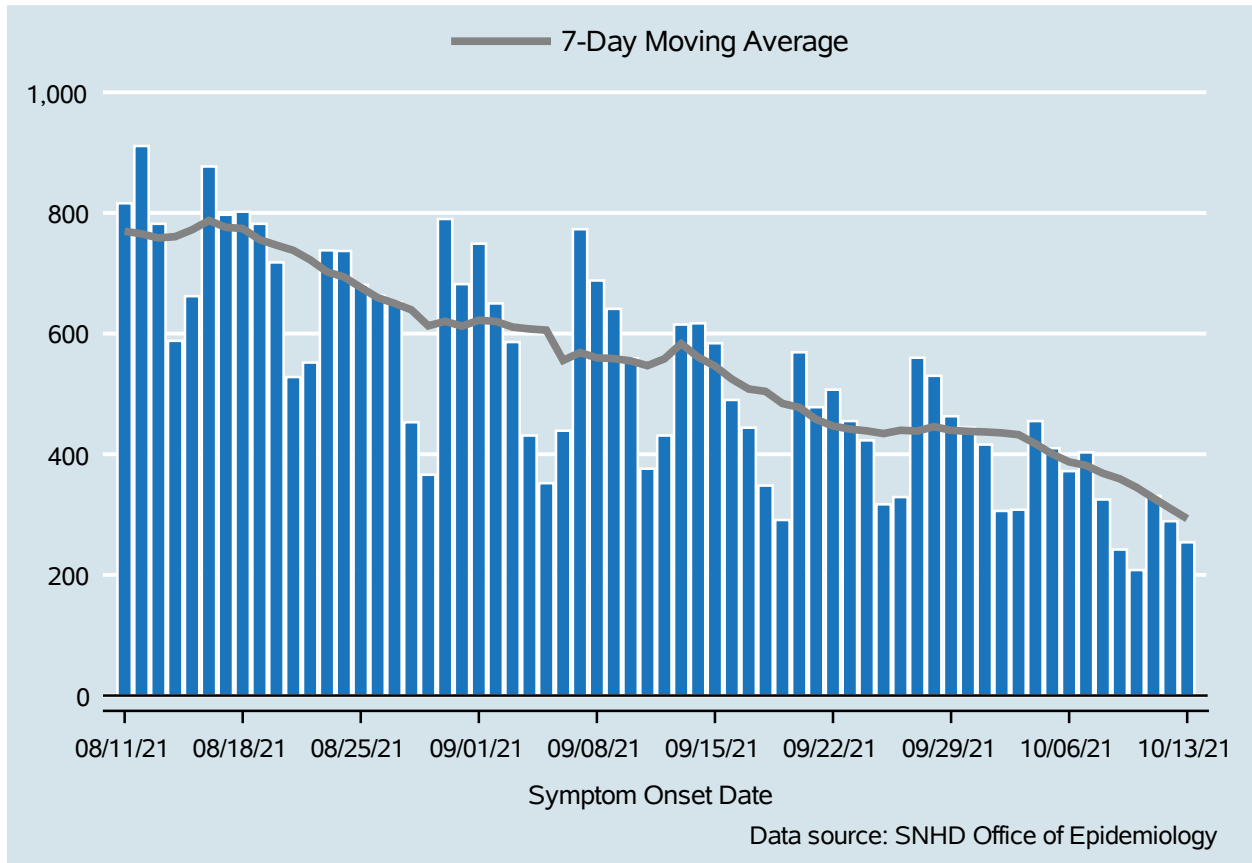


Table 1: COVID-19 Cases per Day, Clark County, NV

Date	Cases Per Day	7-Day Moving Average
Sep 30	444	438.0
Oct 01	416	437.0
Oct 02	306	435.4
Oct 03	308	432.4
Oct 04	455	417.4
Oct 05	410	400.3
Oct 06	372	387.3
Oct 07	403	381.4
Oct 08	325	368.4
Oct 09	242	359.3
Oct 10	208	345.0
Oct 11	331	327.3
Oct 12	289	310.0
Oct 13	254	293.1

# COVID-19 Hospitalizations

Clark County, NV

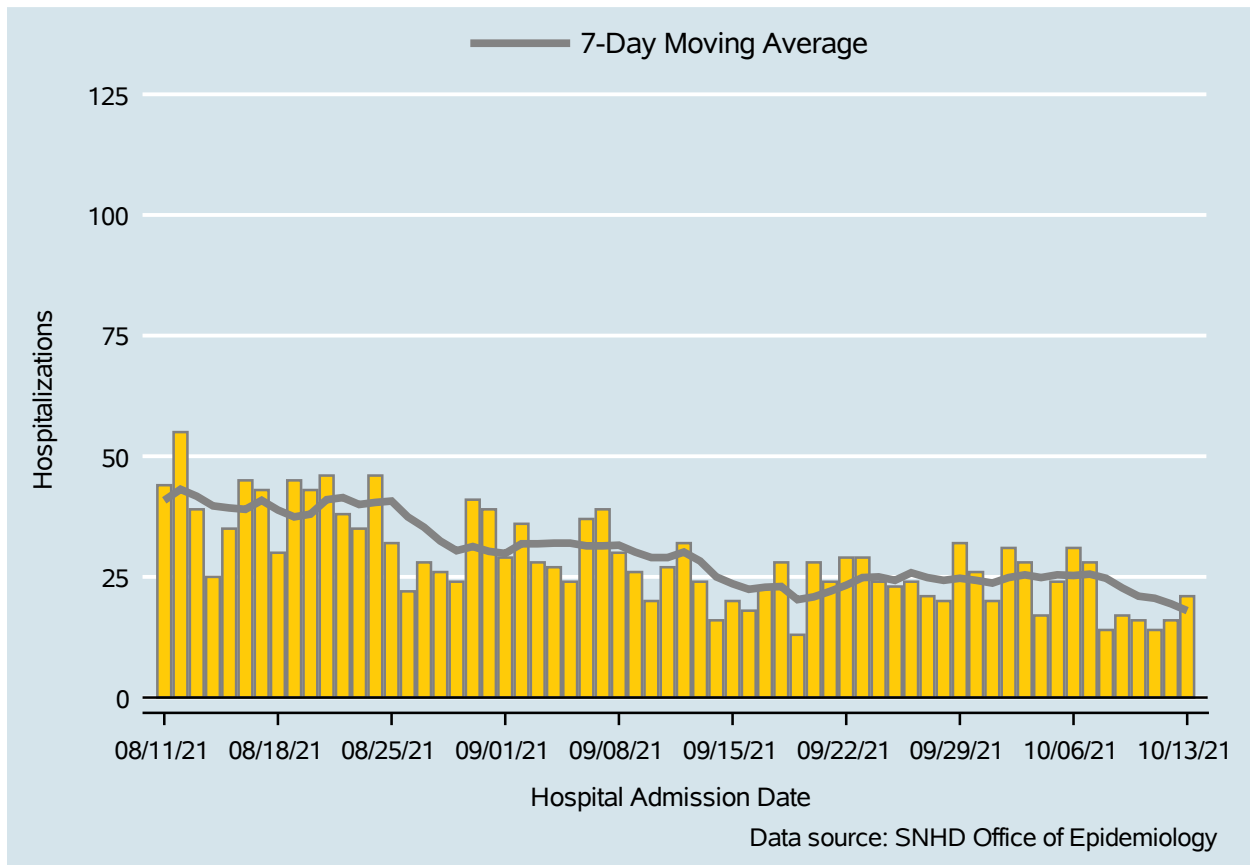


Table 2: COVID-19 Hospitalizations per Day, Clark County, NV

Date	Hospitalizations Per Day	7-Day Moving Average
Sep 30	26	24.3
Oct 01	20	23.7
Oct 02	31	24.9
Oct 03	28	25.4
Oct 04	17	24.9
Oct 05	24	25.4
Oct 06	31	25.3
Oct 07	28	25.6
Oct 08	14	24.7
Oct 09	17	22.7
Oct 10	16	21.0
Oct 11	14	20.6
Oct 12	16	19.4
Oct 13	21	18.0

# COVID-19 Deaths

Clark County, NV

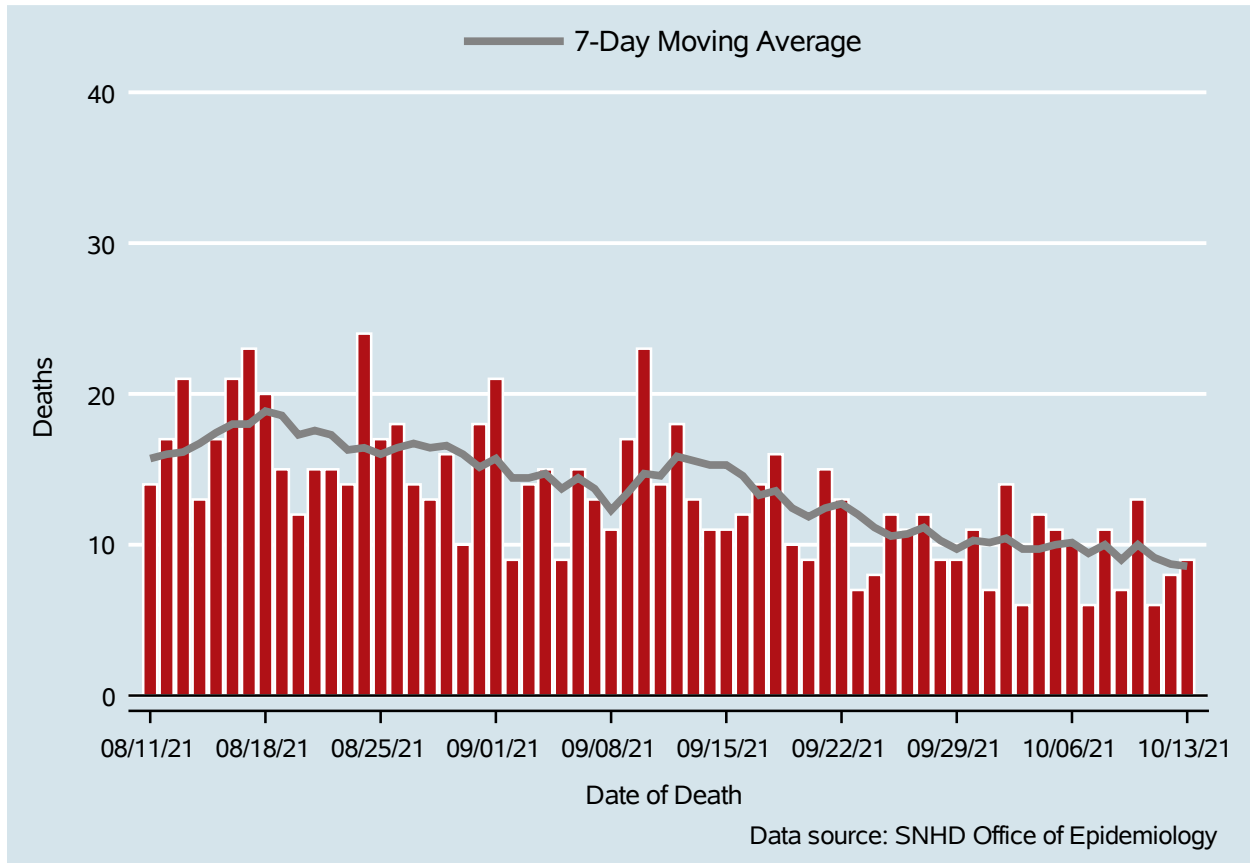


Table 3: COVID-19 Deaths per Day, Clark County, NV

Date	Deaths Per Day	7-Day Moving Average
Sep 30	11	10.3
Oct 01	7	10.1
Oct 02	14	10.4
Oct 03	6	9.7
Oct 04	12	9.7
Oct 05	11	10.0
Oct 06	10	10.1
Oct 07	6	9.4
Oct 08	11	10.0
Oct 09	7	9.0
Oct 10	13	10.0
Oct 11	6	9.1
Oct 12	8	8.7
Oct 13	9	8.6

## 7-Day Average of Daily New Cases per 100K, by Age Group (Years)

Clark County, NV

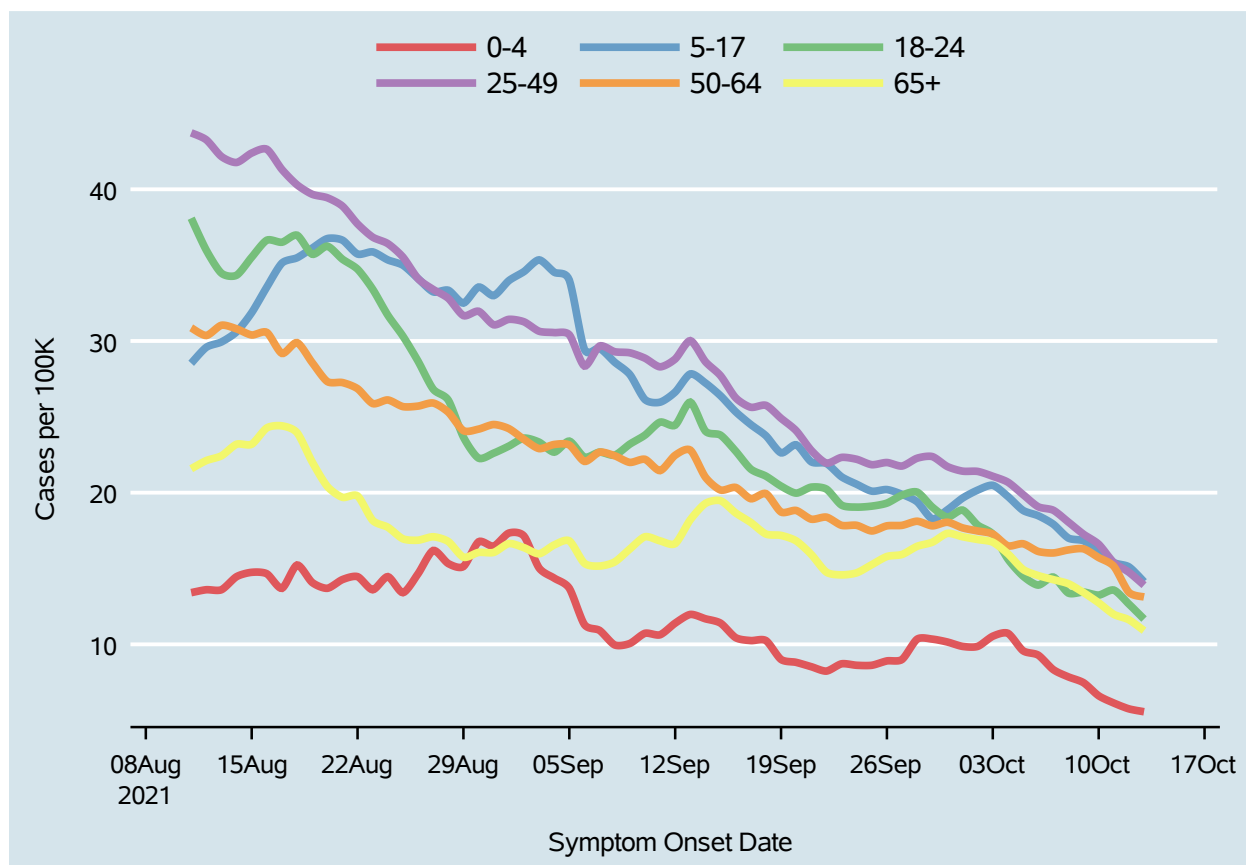
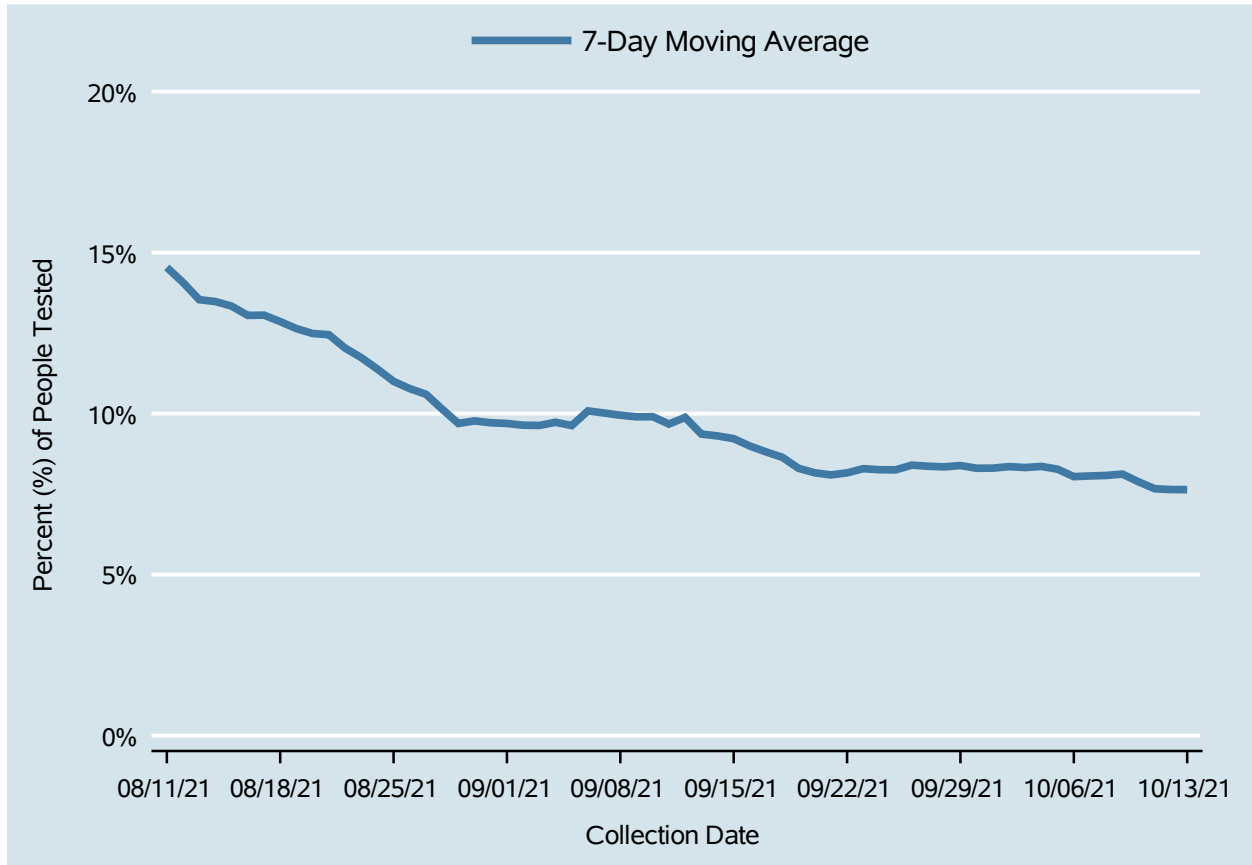


Table 4: 7-Day Average of Daily New Cases per 100K, by Age Group (Years)

Date	0-4	5-17	18-24	25-49	50-64	65+
Sep 30	10.2	18.9	18.4	21.7	18.0	17.3
Oct 01	9.9	19.6	18.8	21.4	17.7	17.1
Oct 02	9.9	20.2	17.9	21.4	17.5	16.9
Oct 03	10.5	20.5	17.3	21.1	17.3	16.7
Oct 04	10.7	19.7	15.6	20.7	16.5	16.0
Oct 05	9.6	18.8	14.5	19.9	16.6	14.9
Oct 06	9.3	18.5	13.9	19.1	16.1	14.5
Oct 07	8.3	17.9	14.4	18.8	16.0	14.3
Oct 08	7.9	17.0	13.4	18.1	16.2	14.0
Oct 09	7.5	16.8	13.4	17.3	16.3	13.4
Oct 10	6.6	16.2	13.2	16.6	15.7	12.7
Oct 11	6.1	15.4	13.6	15.4	15.1	12.0
Oct 12	5.7	15.1	12.7	14.8	13.4	11.6
Oct 13	5.6	14.1	11.7	13.9	13.1	10.9

# Percent of People Receiving COVID-19 Viral Tests Who Have Positive Results

Clark County, NV



*Report prepared by: Kellie Watkins, PhD, MS, Ying Zhang, PhD, MPH (Office of Epidemiology) and Lei Zhang, MS (Office of Informatics)*