

COVID-19 Trends

Clark County, Nevada

Document creation date: October 13, 2021

- General notes: This report uses surveillance data collected by the Southern Nevada Health District. Due to delays related to laboratory processing, reporting, and case investigations, data from the most recent days are less complete than data from older time points. For this reason, as of June 10, 2020 this report will not display data from the previous three days prior to the date that the report was created. As many case investigations are ongoing, all data presented in this report are considered preliminary and subject to change. Data regarding cases, hospitalizations, deaths, and labs were last updated October 13, 2021 at 12:00 AM, and data is reported up through October 9, 2021.
- Cases: Symptom onset date was used for aggregating cases. If symptom onset date was missing, the following dates were substituted in this order: diagnosis date, lab collection date, report date (date case was reported to SNHD), event creation date (date case was entered into TriSano, SNHD's surveillance system).
- Hospitalizations: Admission date was used for aggregating hospitalizations. If admission date was missing, report date was substituted. If a person had more than one hospitalization after his/her COVID-19 diagnosis, only the first admission date was used.
- Deaths: Date of death was used for aggregating deaths. If date of death was missing, report date was used.
- For the "7-Day Average of Daily New Cases per 100K, by Age Group (Years)" graph and table, the population data source for calculating rate estimates was from Nevada State Demographer "2019 ASRHO Estimates and Projections Summary 2000 to 2038", 2020 projection, vintage 2019. Rates for individual age categories may be based on small numbers, which may give unstable estimates.
- All graphs in this report show data from approximately 60 days prior to the date of the report.
- All tables show data from the last 14 days before the current date, with the exception of the "Percent Change in Weekly Totals from Previous Week", which displays data from the previous eight completed weeks.
- For the "Percent of People Receiving COVID-19 Viral Tests Who Have Positive Results" graph, one person who has multiple specimens collected in one day is only reported once. If any test of that person is positive, that person counts as a positive result. If all tests of that individual are negative, that person counts as a negative result. Laboratory tests were included if they were a test assessing for the presence of SARS-CoV-2 viral RNA, for example PCR tests. Antibody tests were excluded.

COVID-19 Cases

Clark County, NV

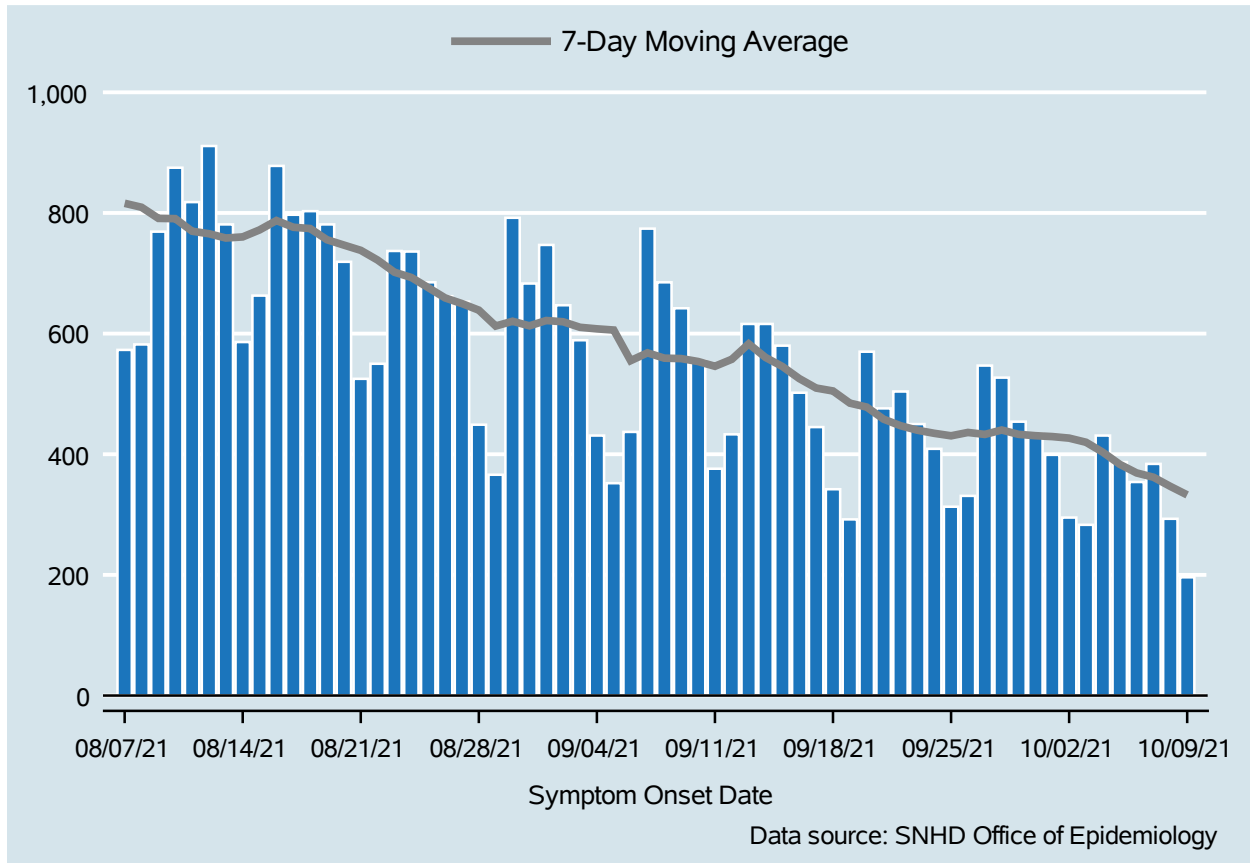


Table 1: COVID-19 Cases per Day, Clark County, NV

Date	Cases Per Day	7-Day Moving Average
Sep 26	331	436.1
Sep 27	547	432.9
Sep 28	527	440.1
Sep 29	454	433.0
Sep 30	434	430.7
Oct 01	399	429.3
Oct 02	295	426.7
Oct 03	283	419.9
Oct 04	431	403.3
Oct 05	387	383.3
Oct 06	354	369.0
Oct 07	384	361.9
Oct 08	293	346.7
Oct 09	196	332.6

COVID-19 Hospitalizations

Clark County, NV

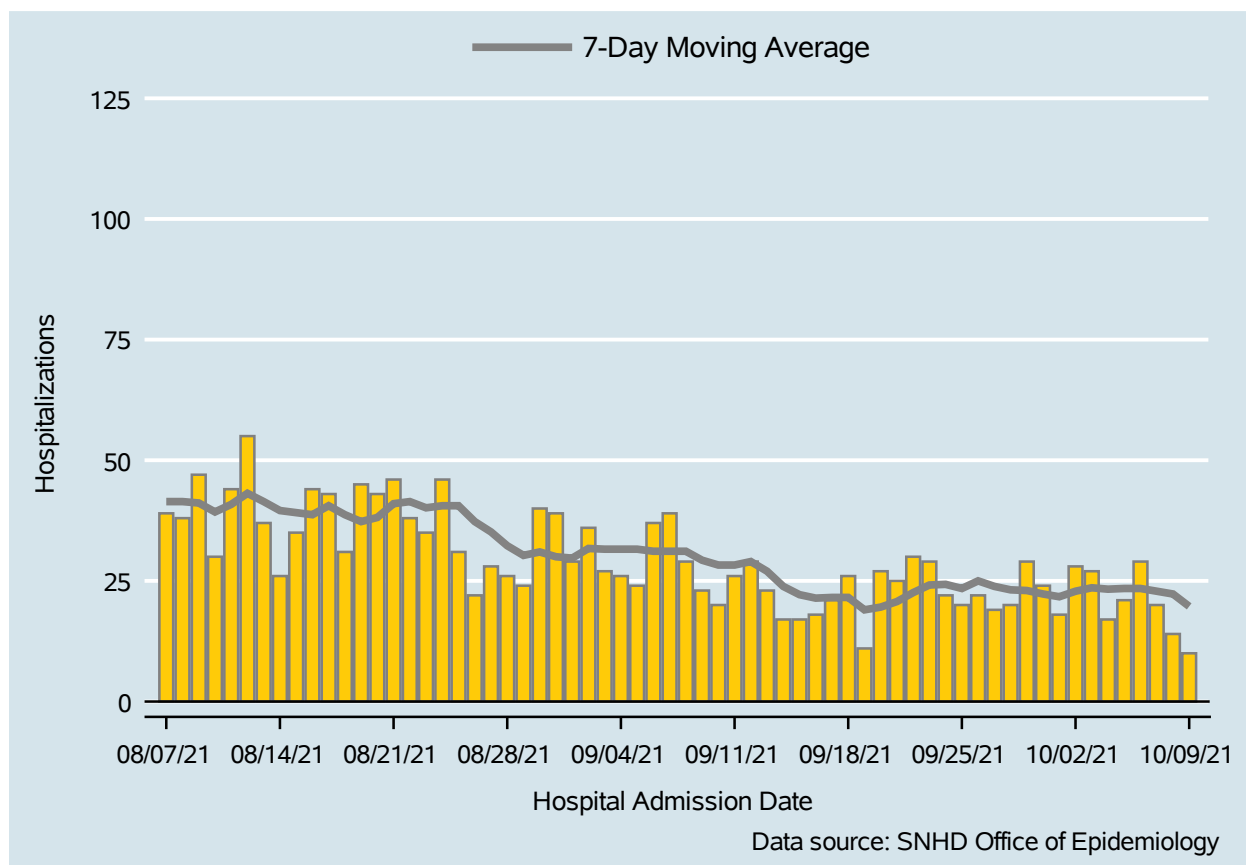


Table 2: COVID-19 Hospitalizations per Day, Clark County, NV

Date	Hospitalizations Per Day	7-Day Moving Average
Sep 26	22	25.0
Sep 27	19	23.9
Sep 28	20	23.1
Sep 29	29	23.0
Sep 30	24	22.3
Oct 01	18	21.7
Oct 02	28	22.9
Oct 03	27	23.6
Oct 04	17	23.3
Oct 05	21	23.4
Oct 06	29	23.4
Oct 07	20	22.9
Oct 08	14	22.3
Oct 09	10	19.7

COVID-19 Deaths

Clark County, NV

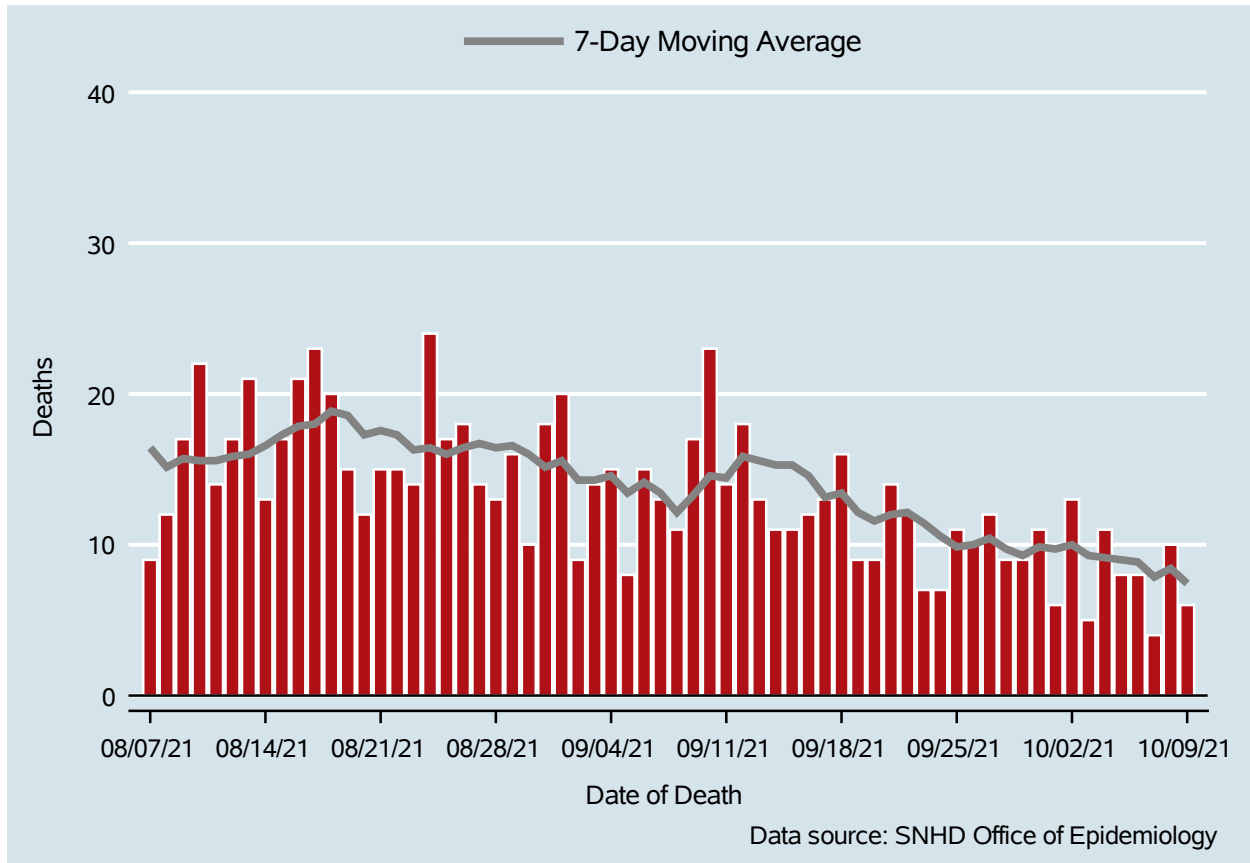


Table 3: COVID-19 Deaths per Day, Clark County, NV

Date	Deaths Per Day	7-Day Moving Average
Sep 26	10	10.0
Sep 27	12	10.4
Sep 28	9	9.7
Sep 29	9	9.3
Sep 30	11	9.9
Oct 01	6	9.7
Oct 02	13	10.0
Oct 03	5	9.3
Oct 04	11	9.1
Oct 05	8	9.0
Oct 06	8	8.9
Oct 07	4	7.9
Oct 08	10	8.4
Oct 09	6	7.4

7-Day Average of Daily New Cases per 100K, by Age Group (Years)

Clark County, NV

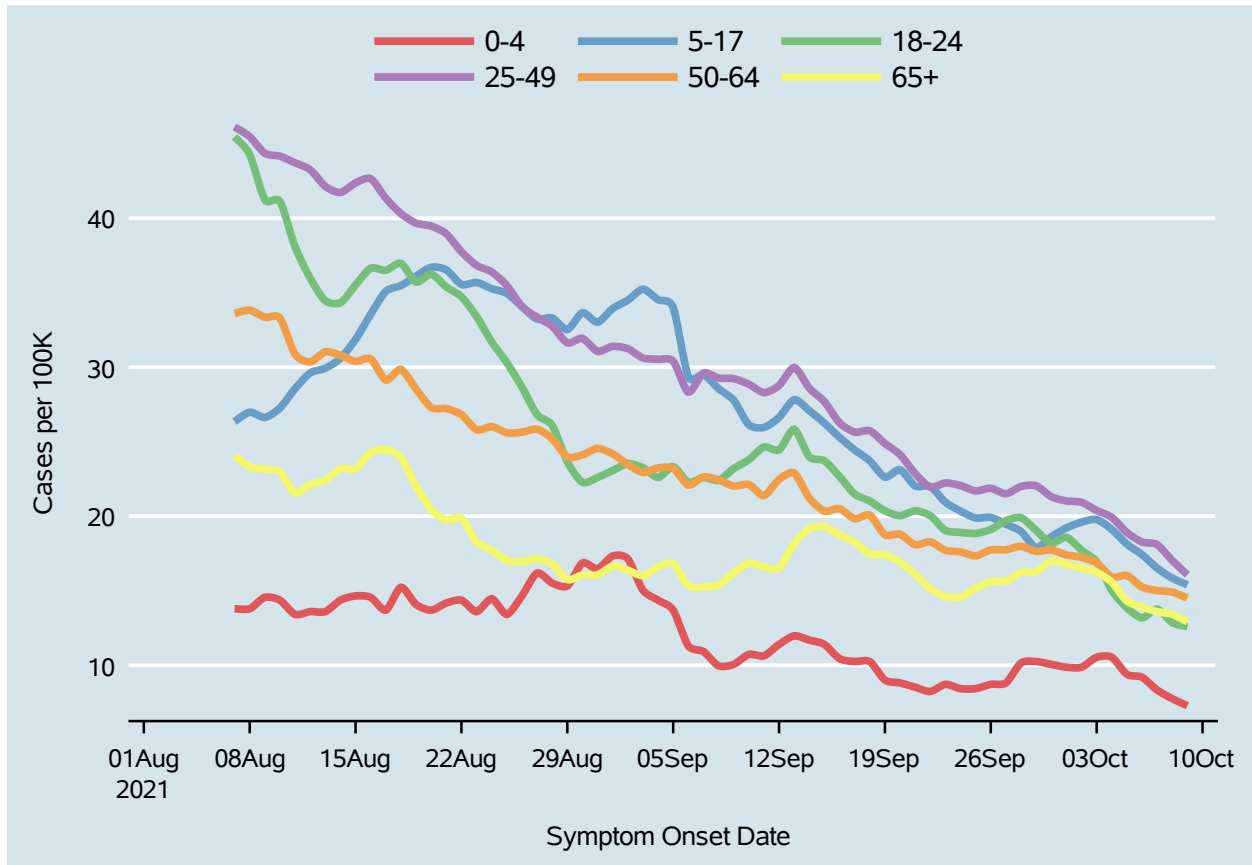
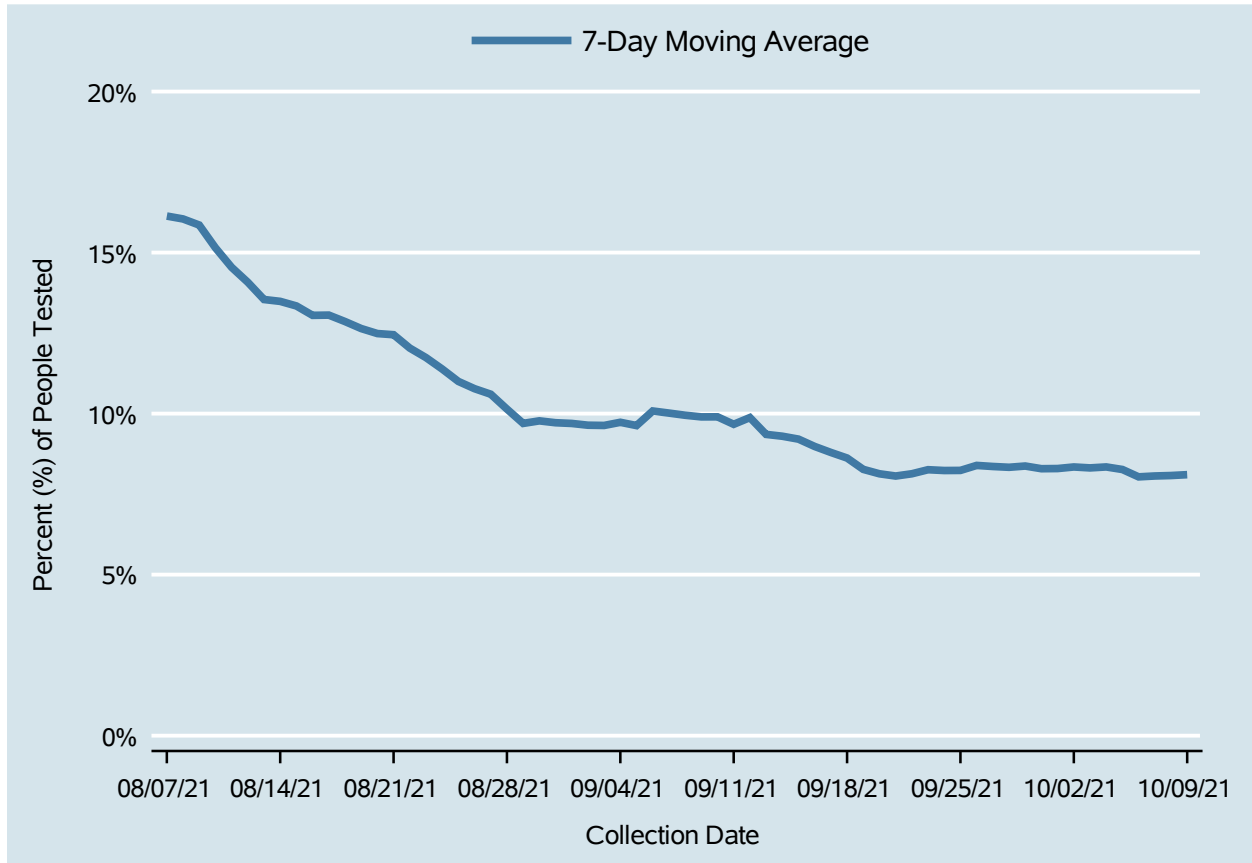


Table 4: 7-Day Average of Daily New Cases per 100K, by Age Group (Years)

Date	0-4	5-17	18-24	25-49	50-64	65+
Sep 26	8.7	19.9	19.1	21.9	17.7	15.6
Sep 27	8.8	19.5	19.7	21.5	17.7	15.7
Sep 28	10.2	19.0	19.9	22.0	18.0	16.2
Sep 29	10.2	17.9	19.0	22.0	17.6	16.3
Sep 30	10.1	18.6	18.2	21.3	17.7	17.0
Oct 01	9.9	19.2	18.6	21.0	17.4	16.8
Oct 02	9.9	19.6	17.7	20.9	17.2	16.5
Oct 03	10.5	19.8	16.9	20.4	16.9	16.2
Oct 04	10.5	19.1	15.0	19.9	15.9	15.6
Oct 05	9.4	18.1	13.8	18.9	16.0	14.3
Oct 06	9.2	17.4	13.2	18.3	15.2	13.9
Oct 07	8.3	16.5	13.8	18.1	15.0	13.6
Oct 08	7.8	15.8	12.9	17.0	14.9	13.4
Oct 09	7.3	15.4	12.6	16.1	14.5	12.9

Percent of People Receiving COVID-19 Viral Tests Who Have Positive Results

Clark County, NV



Report prepared by: Kellie Watkins, PhD, MS, Ying Zhang, PhD, MPH (Office of Epidemiology) and Lei Zhang, MS (Office of Informatics)