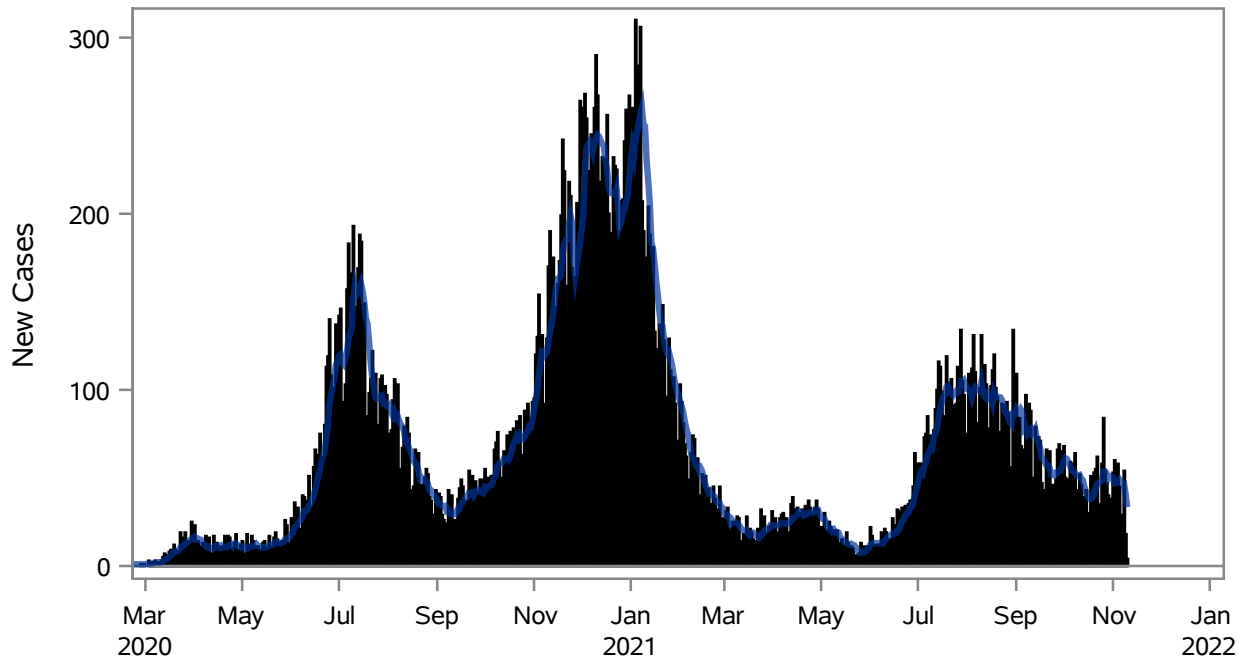


### COVID19 Cases for North Las Vegas, 7-Day Moving Average



■ New Cases — 7-Day Moving Average

Investigations are ongoing; data are subject to change.

Reporting through 10NOV2021

North Las Vegas zip codes include 89030, 89031, 89032, 89033, 89036, 89081, 89084, 89085, 89086, 89087.

**Table 1: New COVID19 Cases and 7-Day Moving Average in North Las Vegas, Previous Two Weeks**

Date (Daily)	New Cases	7-Day Moving Average
28OCT2021	47	52.57
29OCT2021	40	49.43
30OCT2021	36	50.57
31OCT2021	38	51.00
01NOV2021	53	50.29
02NOV2021	60	46.86
03NOV2021	55	47.00
04NOV2021	58	48.57
05NOV2021	45	49.29
06NOV2021	26	47.86
07NOV2021	29	46.57
08NOV2021	54	46.71

---

Note1: Event Date is calculated as follows based on completed information:

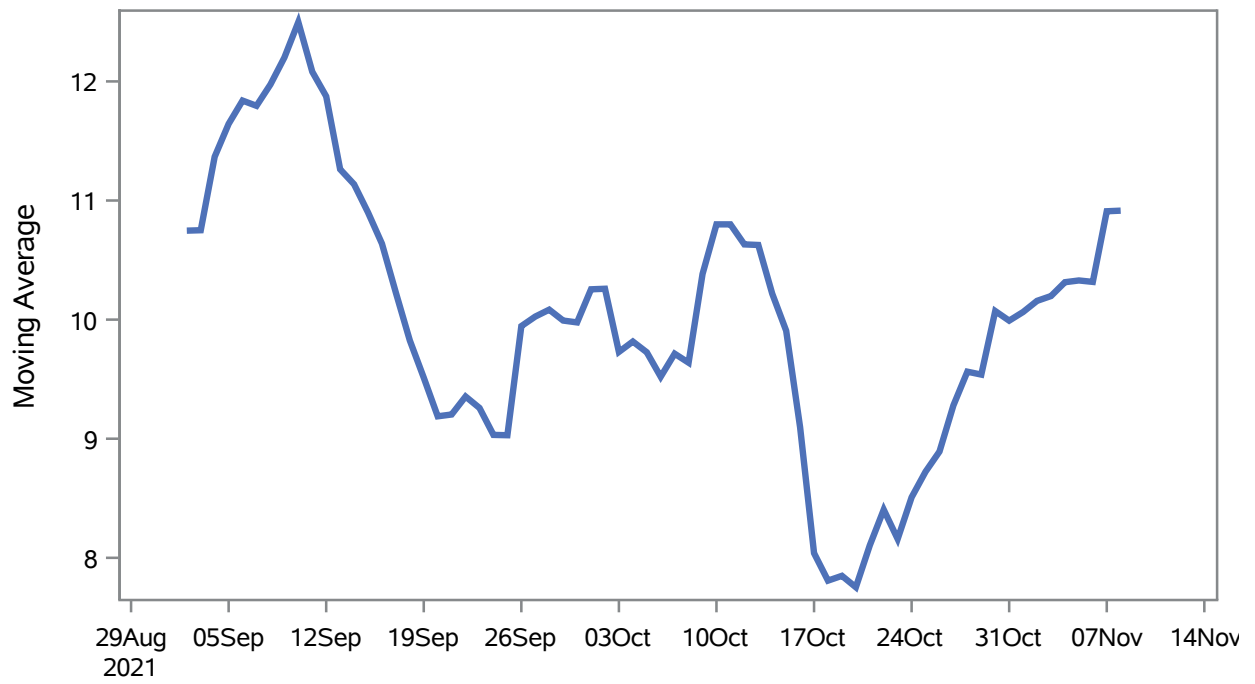
1) Disease onset date 2) Disease diagnosis date 3) Lab result collection date 4) Report date to SNHD.

---

**Investigations are ongoing; data are subject to change.  
Reporting through 10NOV2021**

**North Las Vegas zip codes include 89030, 89031, 89032, 89033, 89036, 89081, 89084, 89085, 89086, 89087.**

### Percent of People Receiving COVID-19 Viral Tests Who Have Positive Results in North Las Vegas



Investigations are ongoing; data are subject to change.

Reporting through 10NOV2021

North Las Vegas zip codes include 89030, 89031, 89032, 89033, 89036, 89081, 89084, 89085, 89086, 89087.

**Table 2: Percent of People Receiving COVID-19 Viral Tests Who Have Positive Results in North Las Vegas**

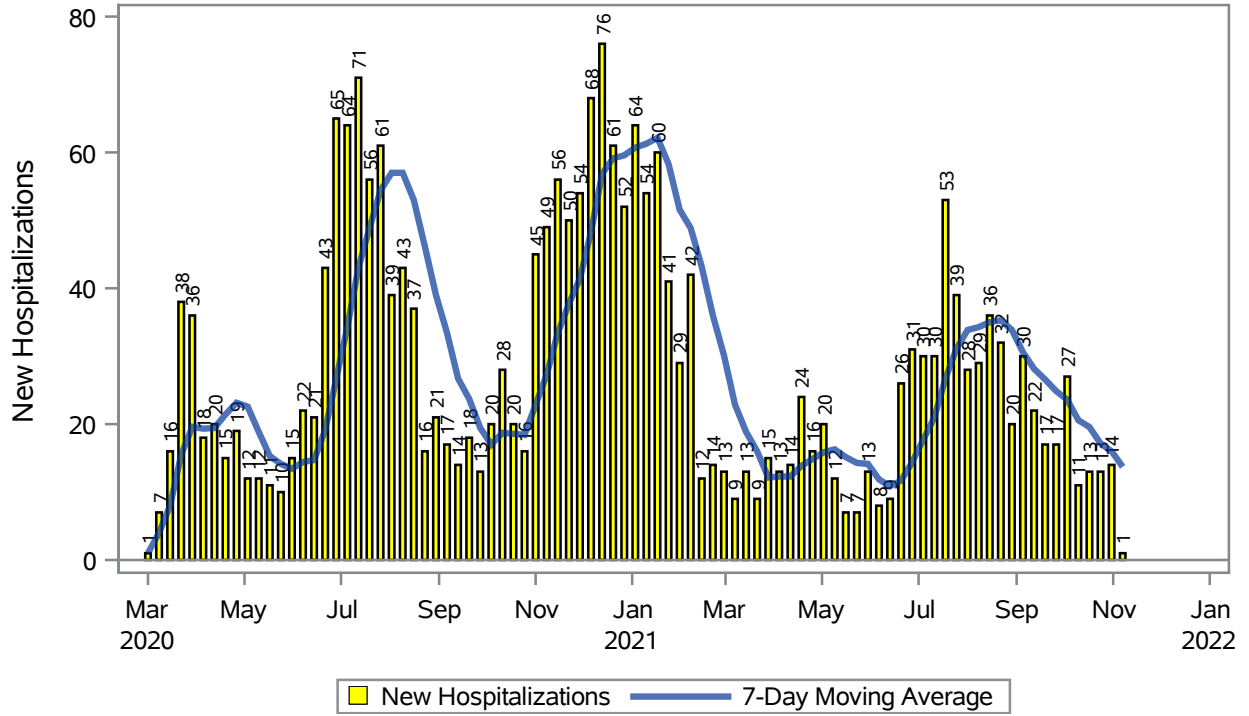
Collection Date	Positive	Negative	Equivocal	Total	% Positivity	7-Day Moving Average
25OCT2021	71	745	2	818	8.68	8.72
26OCT2021	83	981	2	1067	7.78	8.89
27OCT2021	80	895	4	979	8.17	9.28
28OCT2021	85	866	1	952	8.93	9.56
29OCT2021	48	385	1	434	11.06	9.54
30OCT2021	43	281		324	13.27	10.1
31OCT2021	40	291	1	332	12.05	9.99
01NOV2021	84	819	3	914	9.19	10.1
02NOV2021	93	1010		1103	8.43	10.2
03NOV2021	81	874	3	958	8.46	10.2
04NOV2021	94	869	1	965	9.74	10.3
05NOV2021	70	555		627	11.16	10.3
06NOV2021	48	316		364	13.19	10.3
07NOV2021	52	269		321	16.20	10.9
08NOV2021	87	851	4	943	9.23	10.9

Note: Testing Data includes a 3 day delay

**Investigations are ongoing; data are subject to change.  
Reporting through 10NOV2021**

**North Las Vegas zip codes include 89030, 89031, 89032, 89033, 89036, 89081, 89084, 89085, 89086, 89087.**

### COVID19 Hospitalizations for North Las Vegas, 7-Day Moving Average



Investigations are ongoing; data are subject to change.

Reporting through 10NOV2021

North Las Vegas zip codes include 89030, 89031, 89032, 89033, 89036, 89081, 89084, 89085, 89086, 89087.

**Table 3: New COVID19-Related Hospitalizations and 7-Day Moving Average in North Las Vegas, previous month**

Week	Hospitalizations	7-Day Moving Average
17OCT2021	13	19.6
24OCT2021	13	17.1
31OCT2021	14	16.0
07NOV2021	1	13.7

---

Note1: Admission Date is calculated as follows based on completed information:  
A) COVID19 Case is hospitalized B) COVID19 Case has a hospital admission date.

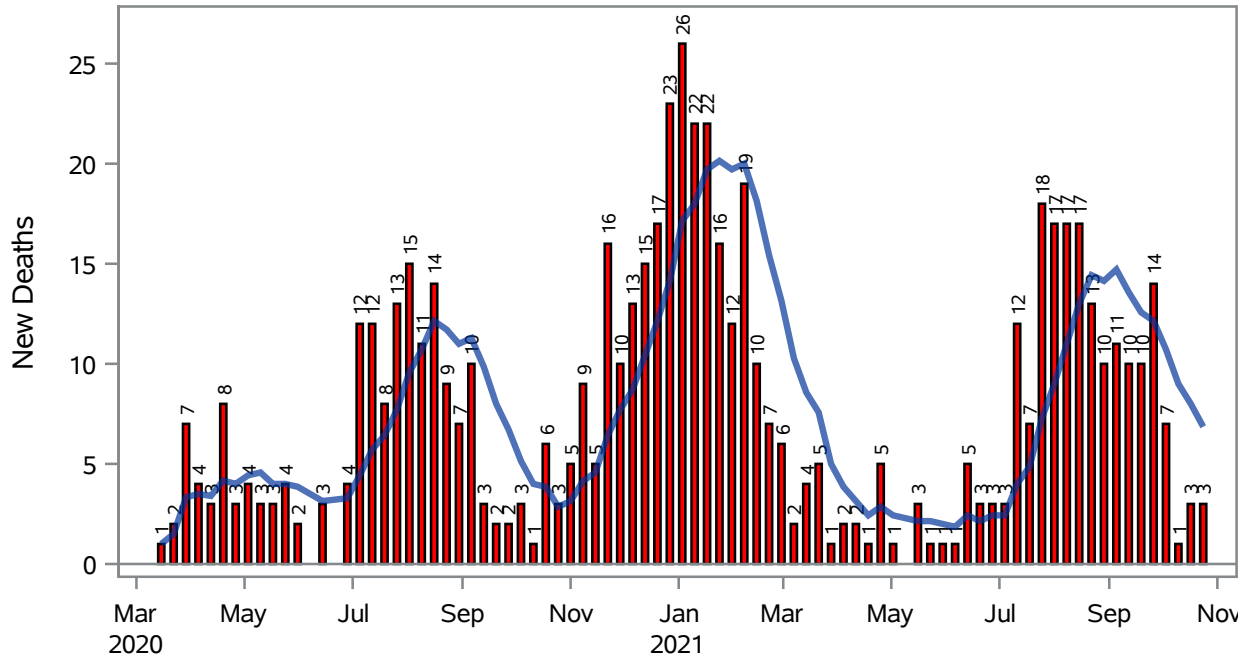
If admission date is missing, then the following is substituted temporarily, in order:  
1) Disease onset date 2) Disease diagnosis date 3) Lab result collection date 4) Report date to SNHD.

---

**Investigations are ongoing; data are subject to change.  
Reporting through 10NOV2021**

**North Las Vegas zip codes include 89030, 89031, 89032, 89033, 89036, 89081, 89084, 89085, 89086, 89087.**

### COVID19 Deaths for North Las Vegas, 7-Day Moving Average



■ New Deaths    — 7-Day Moving Average

Investigations are ongoing; data are subject to change.

Reporting through 10NOV2021

North Las Vegas zip codes include 89030, 89031, 89032, 89033, 89036, 89081, 89084, 89085, 89086, 89087.

**Table 4: New COVID19-Related Deaths and 7-Day Moving Average in North Las Vegas, Previous Month**

Week	Deaths	7-Day Moving Average
17OCT2021	3	8.00
24OCT2021	3	6.86

---

Note1: Date of Death is calculated as follows based on completed information:  
A) COVID19 Case is reported as deceased B) COVID19 Case has a reported date of death.

If date of death is missing, then the following is substituted temporarily, in order:  
1) Disease onset date 2) Disease diagnosis date  
3) Lab result collection date 4) Report date to SNHD.

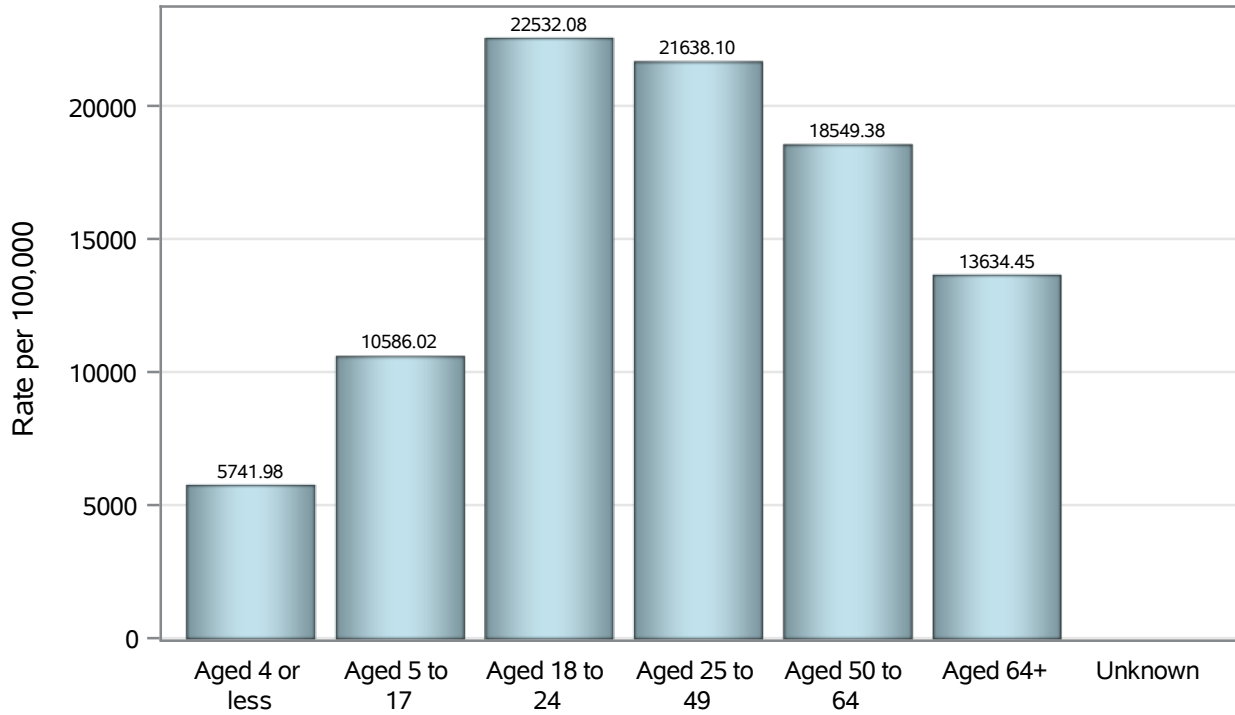
---

**Investigations are ongoing; data are subject to change.  
Reporting through 10NOV2021**

**North Las Vegas zip codes include 89030, 89031, 89032, 89033, 89036, 89081, 89084, 89085, 89086, 89087.**



### Case Age Rates in North Las Vegas

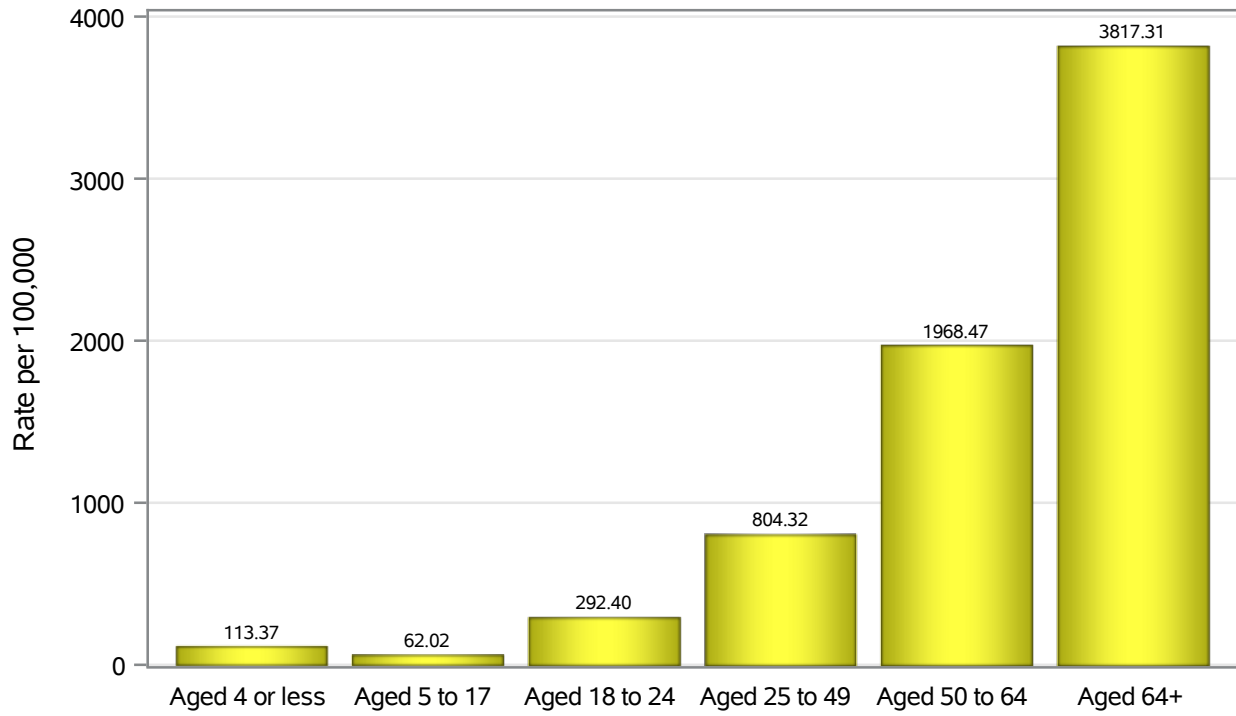


Investigations are ongoing; data are subject to change.

Reporting through 10NOV2021

North Las Vegas zip codes include 89030, 89031, 89032, 89033, 89036, 89081, 89084, 89085, 89086, 89087.

### Hospitalization Age Rates in North Las Vegas

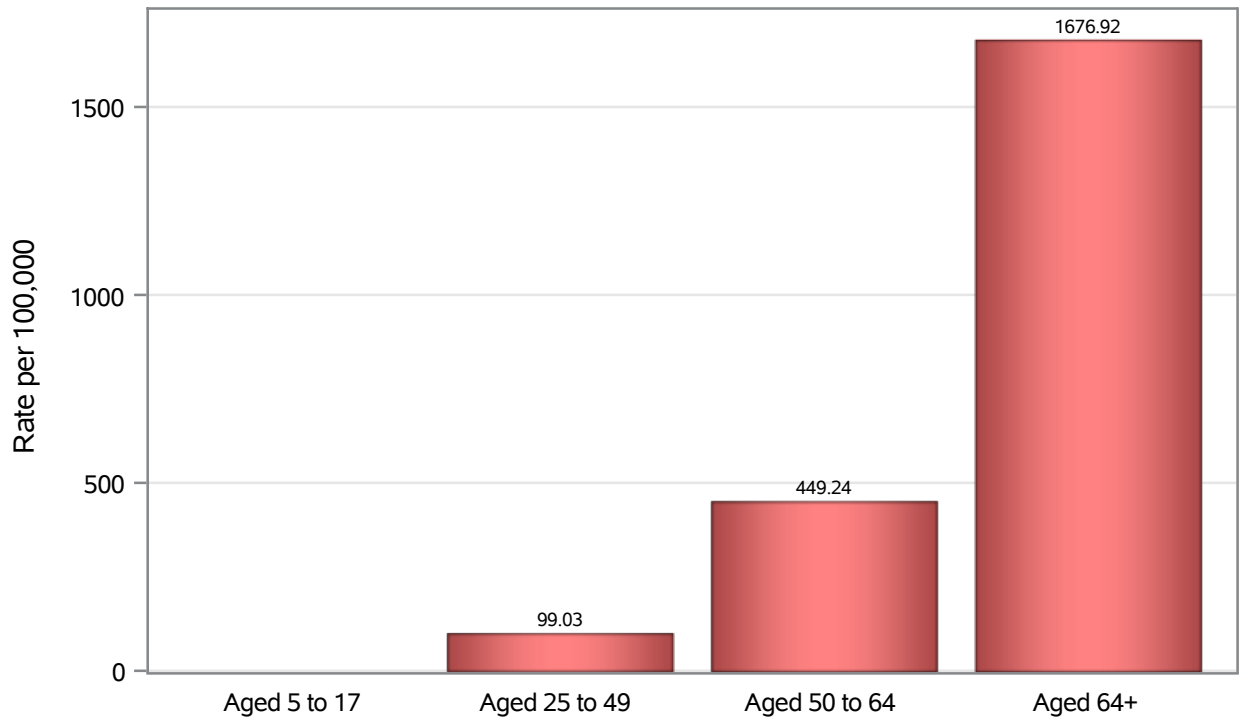


Investigations are ongoing; data are subject to change.

Reporting through 10NOV2021

North Las Vegas zip codes include 89030, 89031, 89032, 89033, 89036, 89081, 89084, 89085, 89086, 89087.

### Death Age Rates in North Las Vegas



Investigations are ongoing; data are subject to change.

Reporting through 10NOV2021

North Las Vegas zip codes include 89030, 89031, 89032, 89033, 89036, 89081, 89084, 89085, 89086, 89087.

**Table 5: Age and COVID19 in North Las Vegas**

Case Status	Age Categories	N	%	Population	Rate per 100,000
Cases	Aged 4 or less	1013	2.6	17,642	5742.0
	Aged 5 to 17	5291	13.4	49,981	10586
	Aged 18 to 24	5163	13.1	22,914	22532
	Aged 25 to 49	17917	45.4	82,803	21638
	Aged 50 to 64	6813	17.3	36,729	18549
	Aged 64+	3236	8.2	23,734	13634
	Unknown	6	0.0	.	.
Hospitalizations	Aged 4 or less	20	0.8	17,642	113.37
	Aged 5 to 17	31	1.3	49,981	62.02
	Aged 18 to 24	67	2.8	22,914	292.40
	Aged 25 to 49	666	27.6	82,803	804.32
	Aged 50 to 64	723	30.0	36,729	1968.5
	Aged 64+	906	37.5	23,734	3817.3
	Deaths	Aged 5 to 17	1	0.2	49,981
Aged 25 to 49		82	12.7	82,803	99.03
Aged 50 to 64		165	25.5	36,729	449.24
Aged 64+		398	61.6	23,734	1676.9

---

Note1: Population data source for calculating rate estimates: U.S. Census Bureau, ACS 5-year estimate.

Note2: Rates for categories with fewer than 12 cases are suppressed due to high relative standard error.

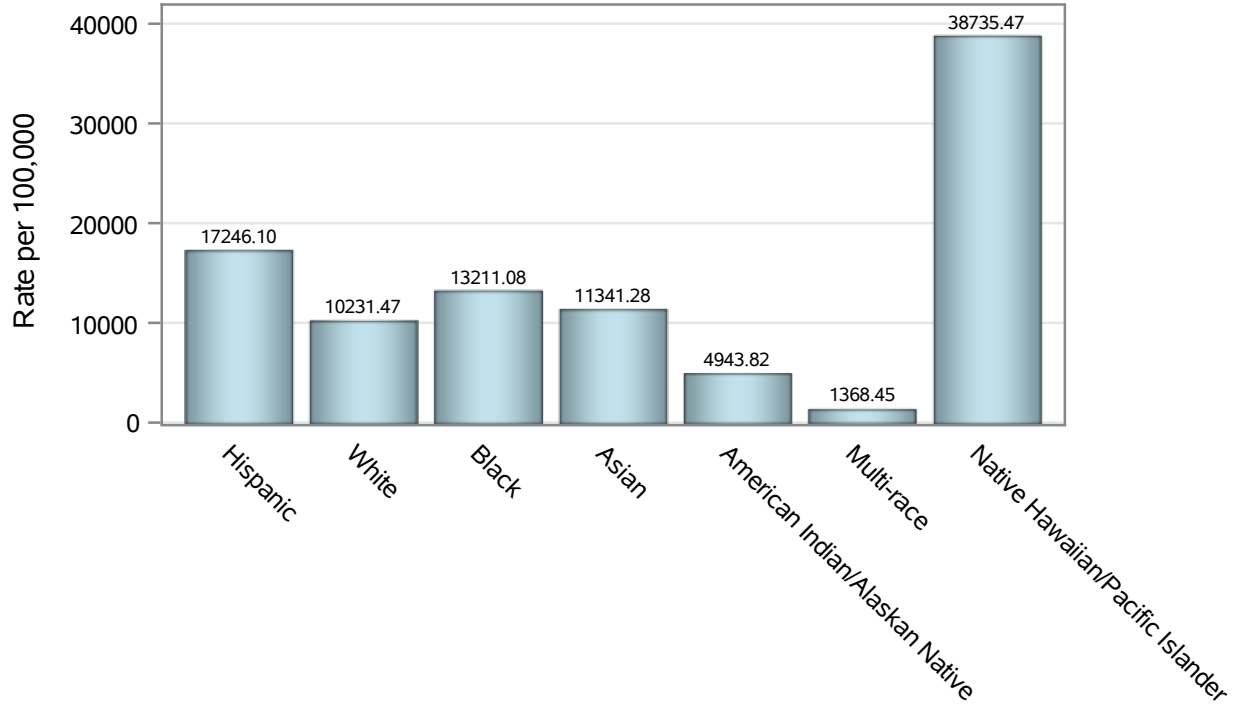
Note3: Hospitalizations are regardless of deceased status; Deaths are regardless of hospitalization status

---

**Investigations are ongoing; data are subject to change.  
Reporting through 10NOV2021**

**North Las Vegas zip codes include 89030, 89031, 89032, 89033, 89036, 89081, 89084, 89085, 89086, 89087.**

### Case Race/Ethnicity Rates in North Las Vegas

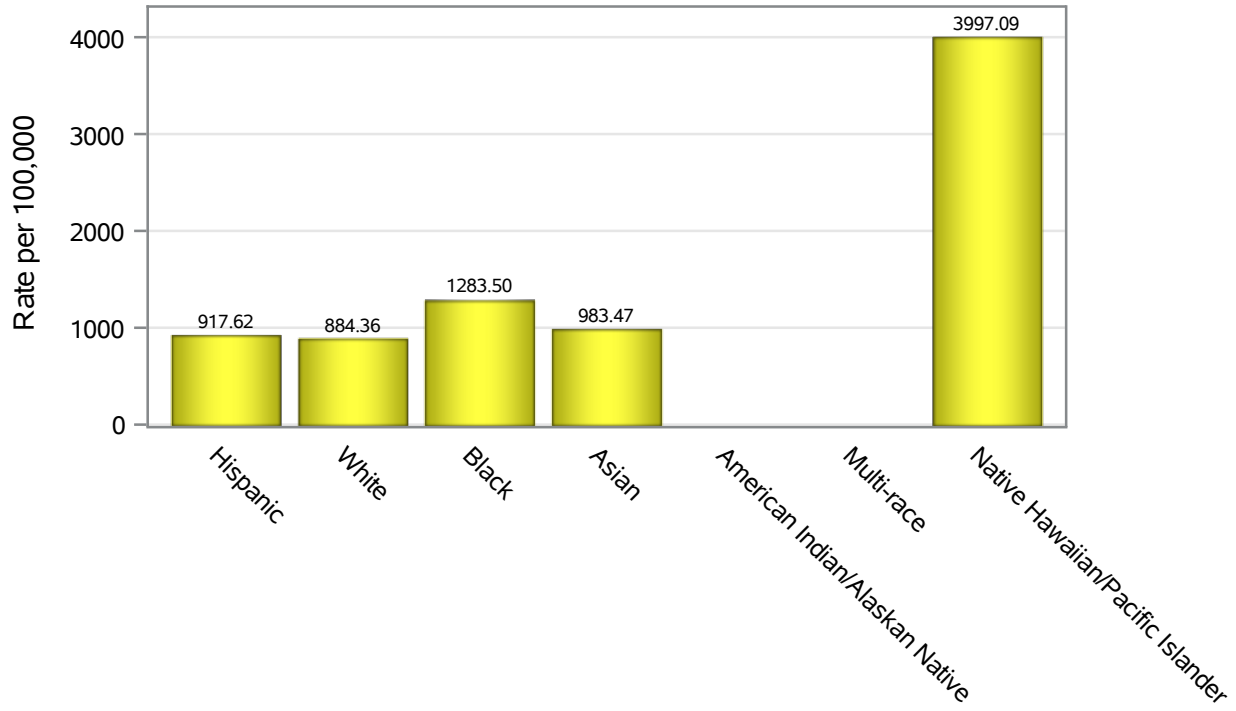


Investigations are ongoing; data are subject to change.

Reporting through 10NOV2021

North Las Vegas zip codes include 89030, 89031, 89032, 89033, 89036, 89081, 89084, 89085, 89086, 89087.

### Hospitalization Race/Ethnicity Rates in North Las Vegas

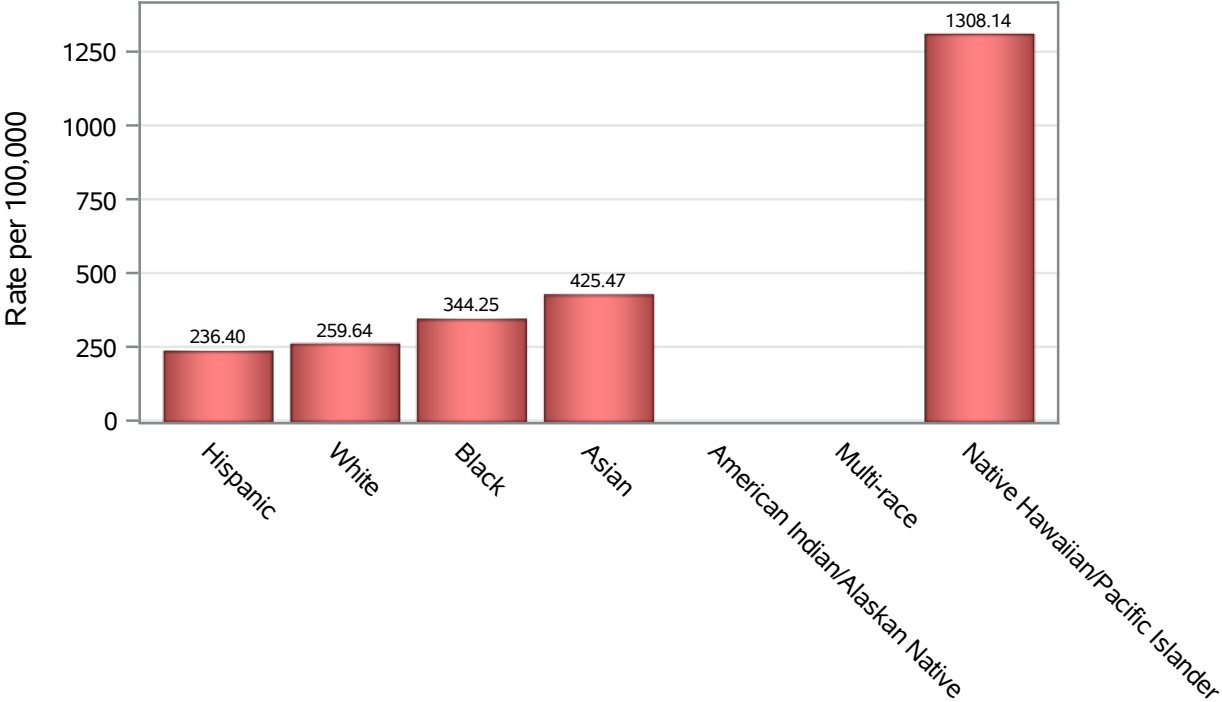


Investigations are ongoing; data are subject to change.

Reporting through 10NOV2021

North Las Vegas zip codes include 89030, 89031, 89032, 89033, 89036, 89081, 89084, 89085, 89086, 89087.

### Death Race/Ethnicity Rates in North Las Vegas



Investigations are ongoing; data are subject to change.

Reporting through 10NOV2021

North Las Vegas zip codes include 89030, 89031, 89032, 89033, 89036, 89081, 89084, 89085, 89086, 89087.

**Table 6: Race/Ethnicity and COVID19 in North Las Vegas**

Case Status	Race Ethnicity Categories	N	%	Population	Rate per 100,000
Cases	Hispanic	16633	42.2	96,445	17246
	White	6502	16.5	63,549	10231
	Black	6217	15.8	47,059	13211
	Asian	1626	4.1	14,337	11341
	American Indian/Alaskan Native	44	0.1	890	4943.8
	Multi-race	133	0.3	9,719	1368.5
	Native Hawaiian/Pacific Islander	533	1.4	1,376	38735
	Unknown	7751	19.7	.	.
Hospitalizations	Hispanic	885	36.7	96,445	917.62
	White	562	23.3	63,549	884.36
	Black	604	25.0	47,059	1283.5
	Asian	141	5.8	14,337	983.47
	American Indian/Alaskan Native	9	0.4	890	.
	Multi-race	8	0.3	9,719	.
	Native Hawaiian/Pacific Islander	55	2.3	1,376	3997.1
	Unknown	149	6.2	.	.
Deaths	Hispanic	228	35.3	96,445	236.40
	White	165	25.5	63,549	259.64
	Black	162	25.1	47,059	344.25
	Asian	61	9.4	14,337	425.47
	American Indian/Alaskan Native	4	0.6	890	.
	Multi-race	3	0.5	9,719	.
	Native Hawaiian/Pacific Islander	18	2.8	1,376	1308.1
	Unknown	5	0.8	.	.

Note1: Population data source for calculating rate estimates: U.S. Census Bureau, ACS 5-year estimate.

Note2: Rates for categories with fewer than 12 cases are suppressed due to high relative standard error.

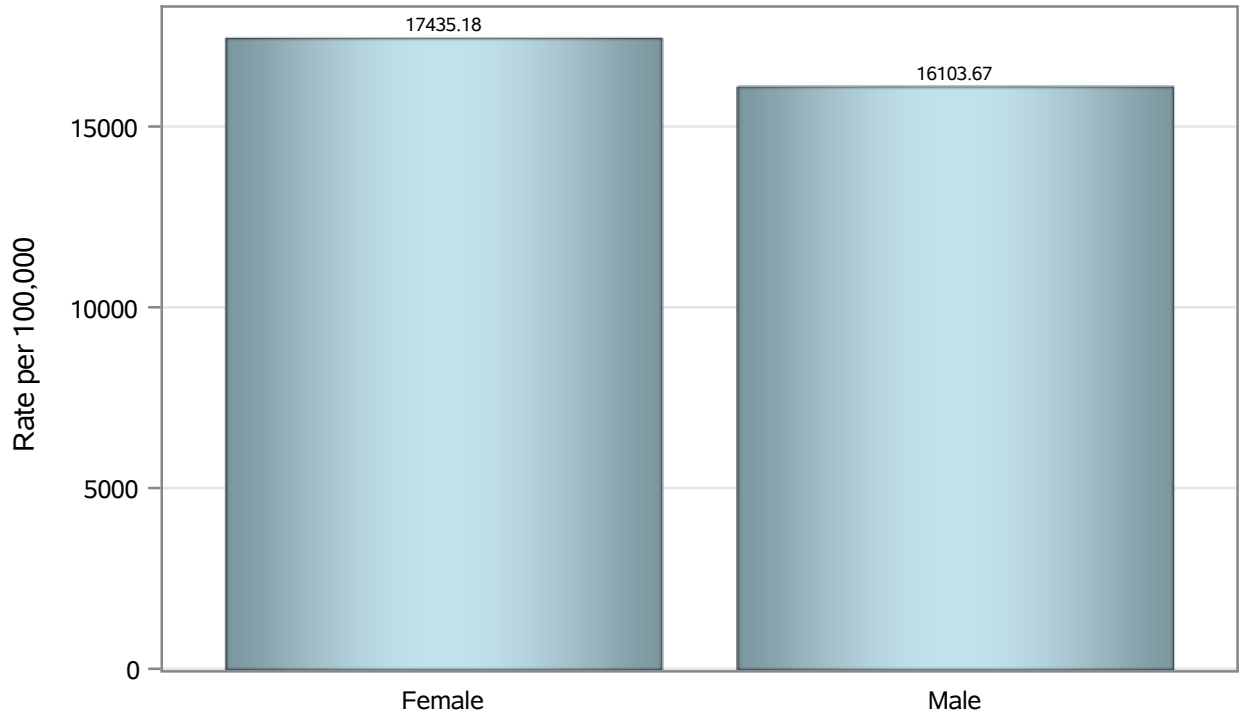
Note3: Hospitalizations are regardless of deceased status; Deaths are regardless of hospitalization status

**Investigations are ongoing; data are subject to change.  
Reporting through 10NOV2021**

**North Las Vegas zip codes include 89030, 89031, 89032, 89033, 89036, 89081, 89084, 89085, 89086, 89087.**



### Case Birth Sex Rates in North Las Vegas

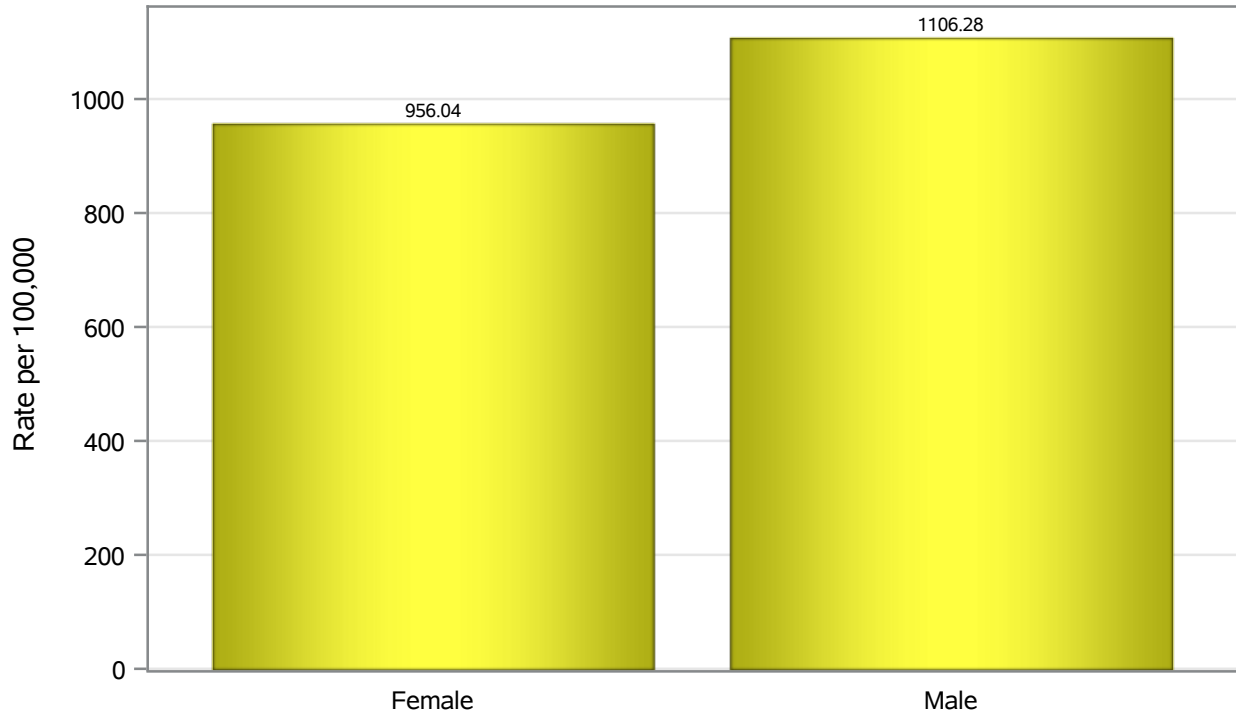


Investigations are ongoing; data are subject to change.

Reporting through 10NOV2021

North Las Vegas zip codes include 89030, 89031, 89032, 89033, 89036, 89081, 89084, 89085, 89086, 89087.

### Hospitalization Birth Sex Rates in North Las Vegas

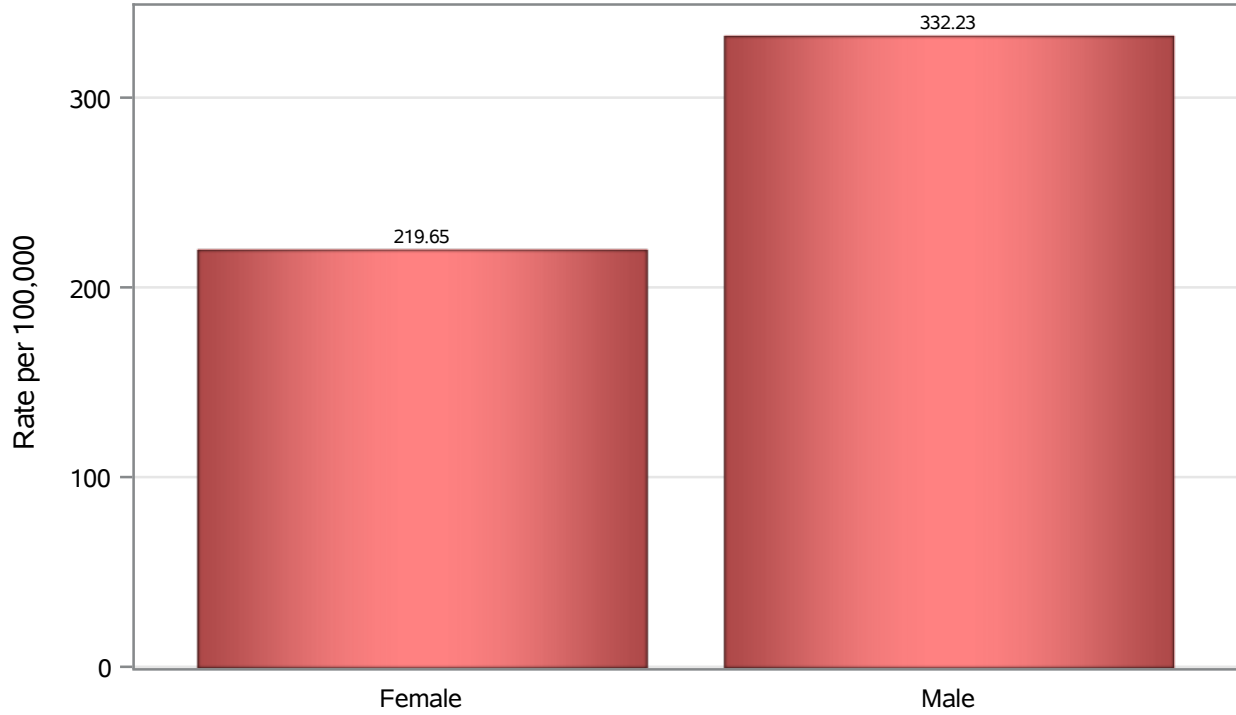


Investigations are ongoing; data are subject to change.

Reporting through 10NOV2021

North Las Vegas zip codes include 89030, 89031, 89032, 89033, 89036, 89081, 89084, 89085, 89086, 89087.

### Death Birth Sex Rates in North Las Vegas



Investigations are ongoing; data are subject to change.

Reporting through 10NOV2021

North Las Vegas zip codes include 89030, 89031, 89032, 89033, 89036, 89081, 89084, 89085, 89086, 89087.

**Table 7: Birth Sex and COVID19 in North Las Vegas**

Case Status	Birth Sex Categories	N	%	Population	Rate per 100,000
Cases	Female	20717	52.5	118823	17435
	Male	18516	46.9	114980	16104
	Unknown	206	0.5	.	.
Hospitalizations	Female	1136	47.1	118823	956.04
	Male	1272	52.7	114980	1106.3
	Unknown	5	0.2	.	.
Deaths	Female	261	40.4	118823	219.65
	Male	382	59.1	114980	332.23
	Unknown	3	0.5	.	.

---

Note1: Population data source for calculating rate estimates: U.S. Census Bureau, ACS 5-year estimate.

Note2: Rates for categories with fewer than 12 cases are suppressed due to high relative standard error.

Note3: Hospitalizations are regardless of deceased status; Deaths are regardless of hospitalization status

---

**Investigations are ongoing; data are subject to change.  
Reporting through 10NOV2021**

**North Las Vegas zip codes include 89030, 89031, 89032, 89033, 89036, 89081, 89084, 89085, 89086, 89087.**