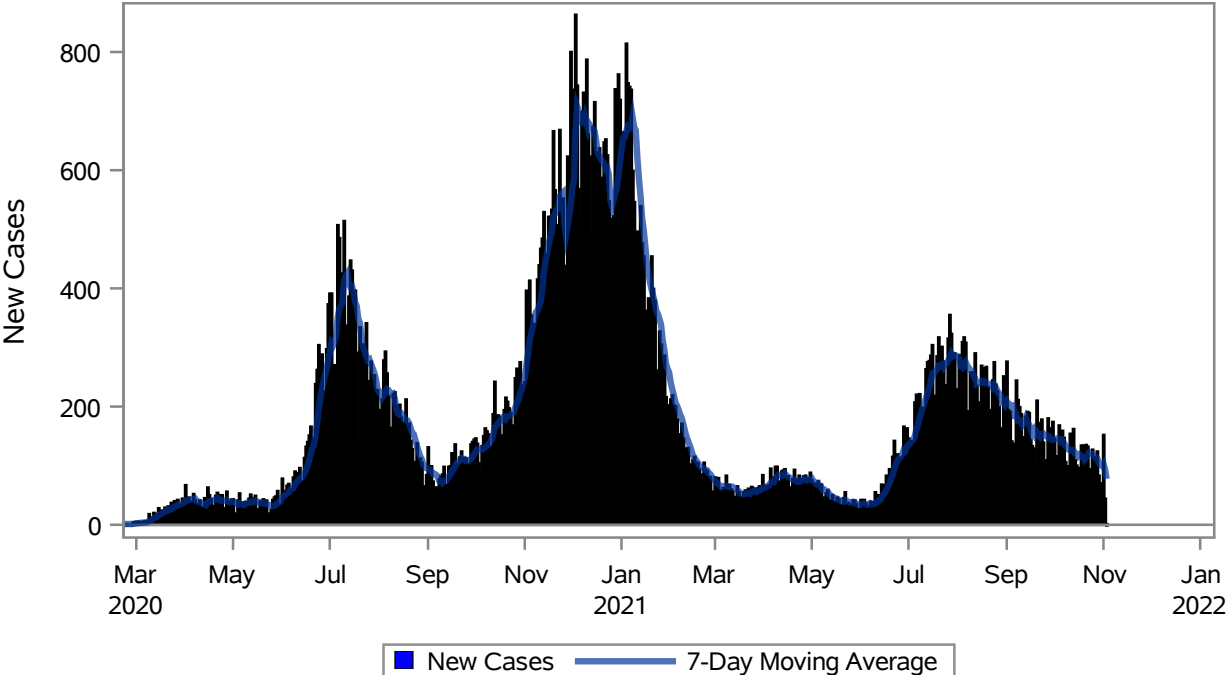


COVID19 Cases for Las Vegas, 7-Day Moving Average



Investigations are ongoing; data are subject to change.
Reporting through 03NOV2021

Las Vegas zip codes include 89101, 89102, 89104, 89106, 89108, 89109, 89110, 89117, 89129, 89130, 89131, 89143, 89146, 89149, 89166, 89145, 89144, 89134, 89107, 89128, 89138.

Table 1: New COVID19 Cases and 7-Day Moving Average in Las Vegas, Previous Two Weeks

Date (Daily)	New Cases	7-Day Moving Average
21OCT2021	135	113.86
22OCT2021	132	118.43
23OCT2021	94	122.14
24OCT2021	86	120.71
25OCT2021	127	119.71
26OCT2021	114	116.86
27OCT2021	113	114.43
28OCT2021	124	112.86
29OCT2021	83	105.86
30OCT2021	69	102.29
31OCT2021	70	100.00
01NOV2021	152	103.57

Note1: Event Date is calculated as follows based on completed information:
1) Disease onset date 2) Disease diagnosis date 3) Lab result collection date 4) Report date to SNHD.

**Investigations are ongoing; data are subject to change.
Reporting through 03NOV2021**

Las Vegas zip codes include 89101, 89102, 89104, 89106, 89108, 89109, 89110, 89117, 89129, 89130, 89131, 89143, 89146, 89149, 89166, 89145, 89144, 89134, 89107, 89128, 89138.

Percent of People Receiving COVID-19 Viral Tests Who Have Positive Results in Las Vegas



Investigations are ongoing; data are subject to change.
Reporting through 03NOV2021

Las Vegas zip codes include 89101, 89102, 89104, 89106, 89108, 89109, 89110, 89117, 89129, 89130, 89131, 89143, 89146, 89149, 89166, 89145, 89144, 89134, 89107, 89128, 89138.

Table 2: Percent of People Receiving COVID-19 Viral Tests Who Have Positive Results in Las Vegas

Collection Date	Positive	Negative	Equivocal	Total	% Positivity	7-Day Moving Average
18OCT2021	410	5882	8	6303	6.50	7.14
19OCT2021	338	6010	8	6364	5.31	7.08
20OCT2021	331	6011	4	6349	5.21	6.93
21OCT2021	365	5366	1	5742	6.36	7.03
22OCT2021	339	3986	2	4328	7.83	7.16
23OCT2021	203	2361	3	2569	7.90	7.02
24OCT2021	196	1986	5	2187	8.96	6.87
25OCT2021	389	5241	8	5640	6.90	6.93
26OCT2021	322	5313	8	5643	5.71	6.98
27OCT2021	343	5019	9	5371	6.39	7.15
28OCT2021	365	4777	7	5150	7.09	7.25
29OCT2021	290	2791		3083	9.41	7.48
30OCT2021	255	2158	3	2418	10.55	7.86
31OCT2021	206	1734	3	1943	10.60	8.09
01NOV2021	497	4835	3	5335	9.32	8.44

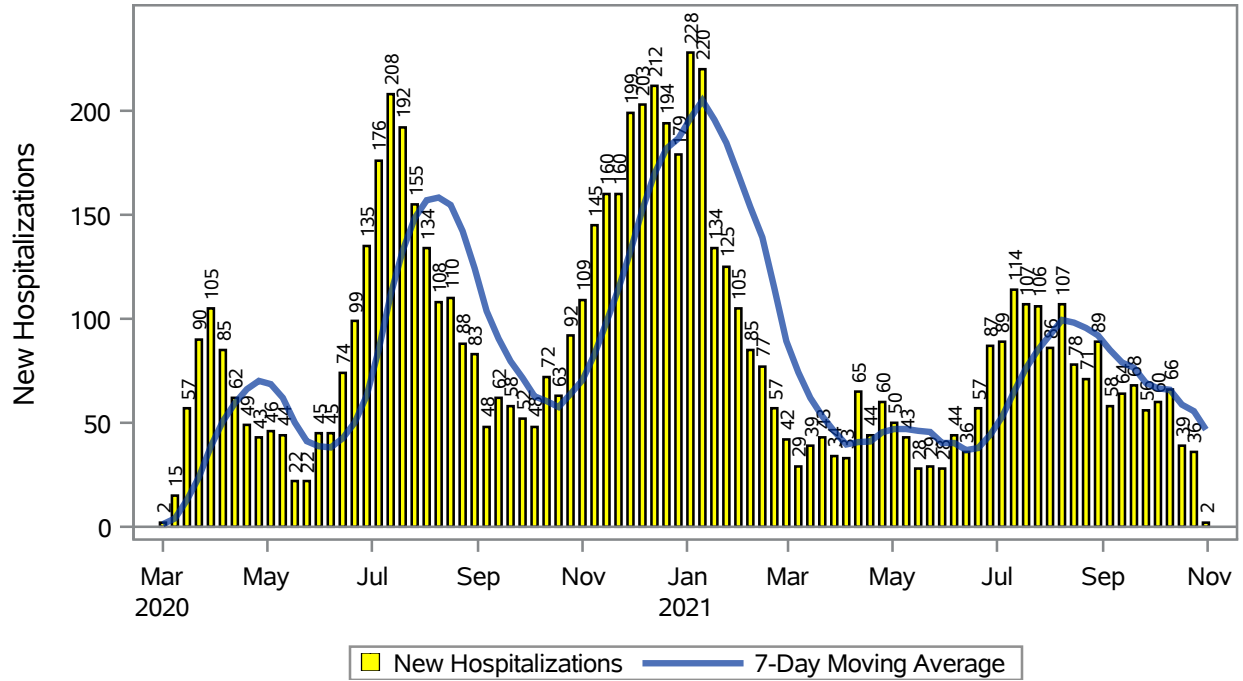
Note: Testing Data includes a 3 day delay

Investigations are ongoing; data are subject to change.

Reporting through 03NOV2021

Las Vegas zip codes include 89101, 89102, 89104, 89106, 89108, 89109, 89110, 89117, 89129, 89130, 89131, 89143, 89146, 89149, 89166, 89145, 89144, 89134, 89107, 89128, 89138.

COVID19 Hospitalizations for Las Vegas, 7-Day Moving Average



Investigations are ongoing; data are subject to change.
Reporting through 03NOV2021

Las Vegas zip codes include 89101, 89102, 89104, 89106, 89108, 89109, 89110, 89117, 89129, 89130, 89131, 89143, 89146, 89149, 89166, 89145, 89144, 89134, 89107, 89128, 89138.

Table 3: New COVID19-Related Hospitalizations and 7-Day Moving Average in Las Vegas, previous month

Week	Hospitalizations	7-Day Moving Average
10OCT2021	66	65.9
17OCT2021	39	58.7
24OCT2021	36	55.6
31OCT2021	2	46.7

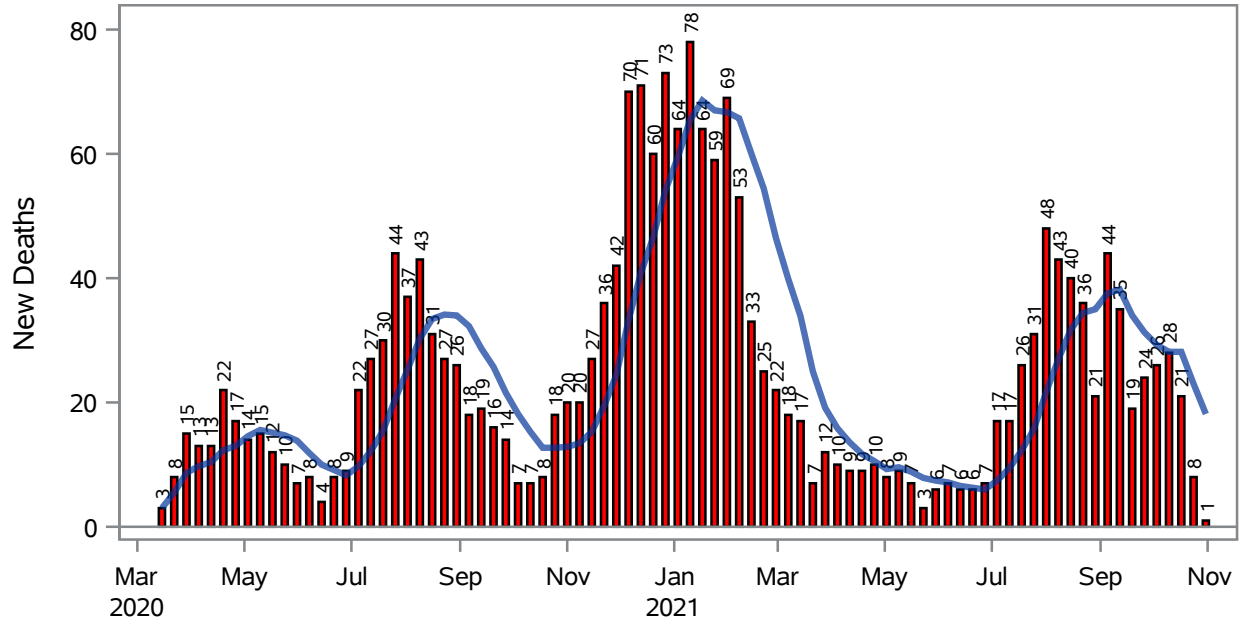
Note1: Admission Date is calculated as follows based on completed information:
A) COVID19 Case is hospitalized B) COVID19 Case has a hospital admission date.

If admission date is missing, then the following is substituted temporarily, in order:
1) Disease onset date 2) Disease diagnosis date 3) Lab result collection date 4) Report date to SNHD.

**Investigations are ongoing; data are subject to change.
Reporting through 03NOV2021**

Las Vegas zip codes include 89101, 89102, 89104, 89106, 89108, 89109, 89110, 89117, 89129, 89130, 89131, 89143, 89146, 89149, 89166, 89145, 89144, 89134, 89107, 89128, 89138.

COVID19 Deaths for Las Vegas, 7-Day Moving Average



■ New Deaths — 7-Day Moving Average

Investigations are ongoing; data are subject to change.

Reporting through 03NOV2021

Las Vegas zip codes include 89101, 89102, 89104, 89106, 89108, 89109, 89110, 89117, 89129, 89130, 89131, 89143, 89146, 89149, 89166, 89145, 89144, 89134, 89107, 89128, 89138.

Table 4: New COVID19-Related Deaths and 7-Day Moving Average in Las Vegas, Previous Month

Week	Deaths	7-Day Moving Average
10OCT2021	28	28.1
17OCT2021	21	28.1
24OCT2021	8	23.0
31OCT2021	1	18.1

Note1: Date of Death is calculated as follows based on completed information:
A) COVID19 Case is reported as deceased B) COVID19 Case has a reported date of death.

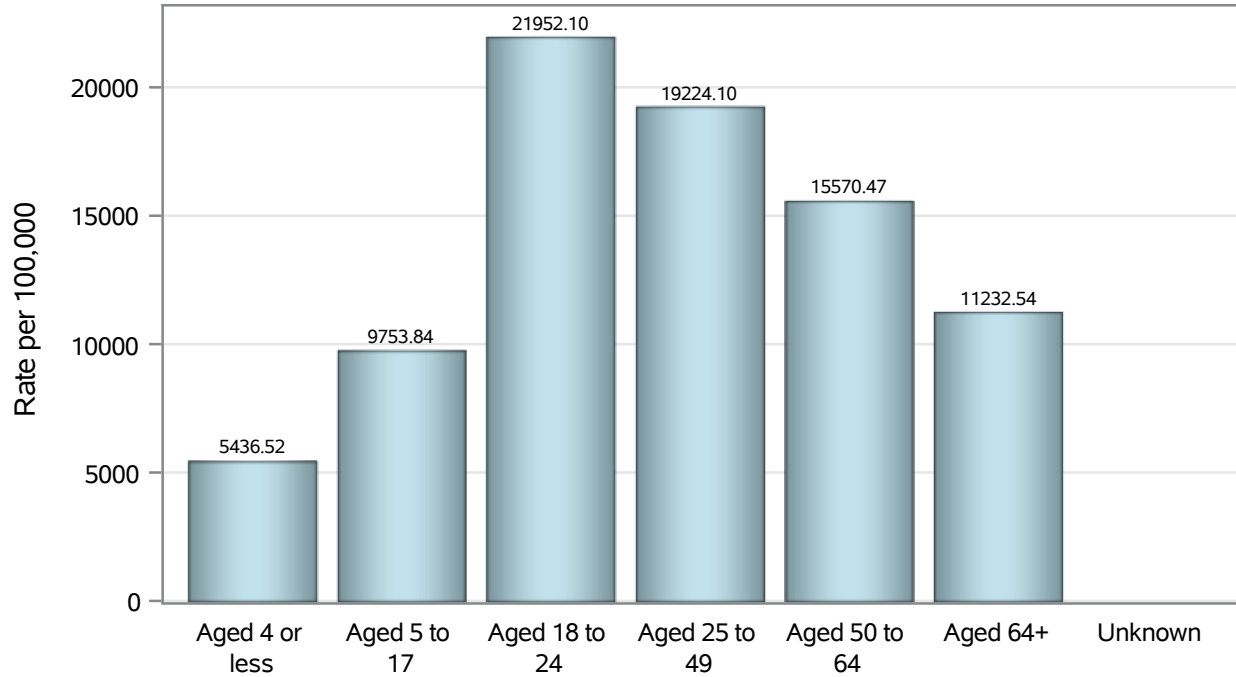
If date of death is missing, then the following is substituted temporarily, in order:
1) Disease onset date 2) Disease diagnosis date
3) Lab result collection date 4) Report date to SNHD.

Investigations are ongoing; data are subject to change.

Reporting through 03NOV2021

Las Vegas zip codes include 89101, 89102, 89104, 89106, 89108, 89109, 89110, 89117, 89129, 89130, 89131, 89143, 89146, 89149, 89166, 89145, 89144, 89134, 89107, 89128, 89138.

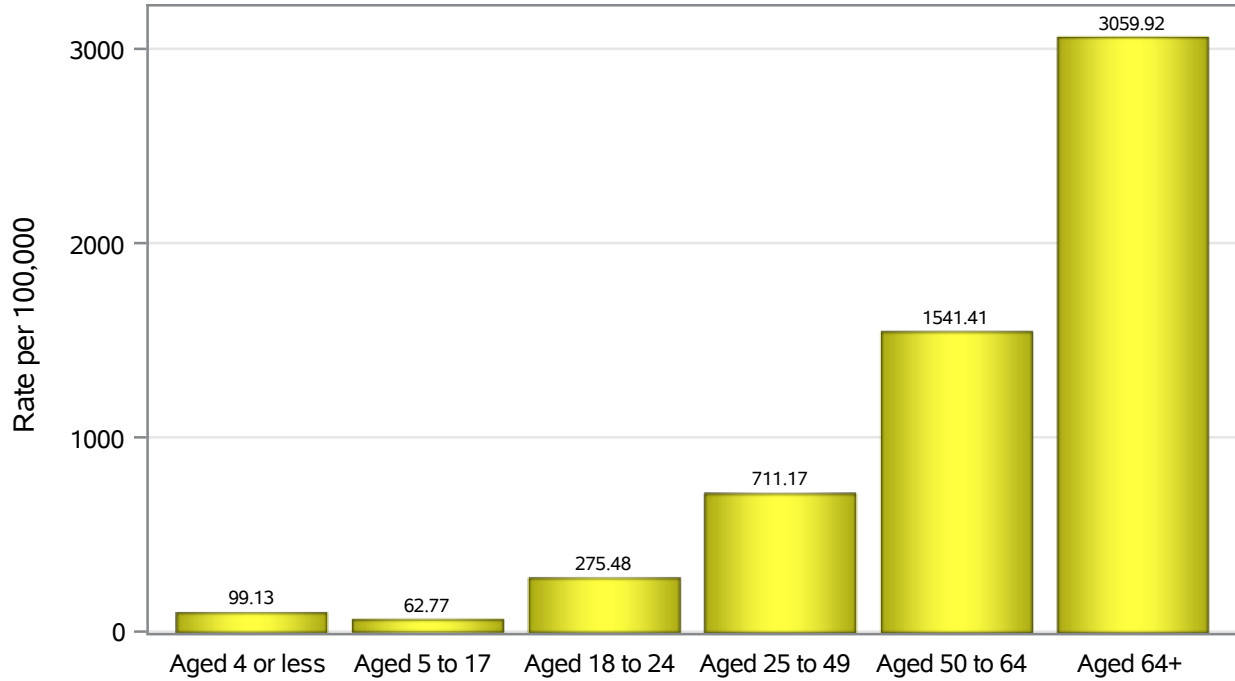
Case Age Rates in Las Vegas



Investigations are ongoing; data are subject to change.
Reporting through 03NOV2021

Las Vegas zip codes include 89101, 89102, 89104, 89106, 89108, 89109, 89110, 89117, 89129, 89130, 89131, 89143, 89146, 89149, 89166, 89145, 89144, 89134, 89107, 89128, 89138.

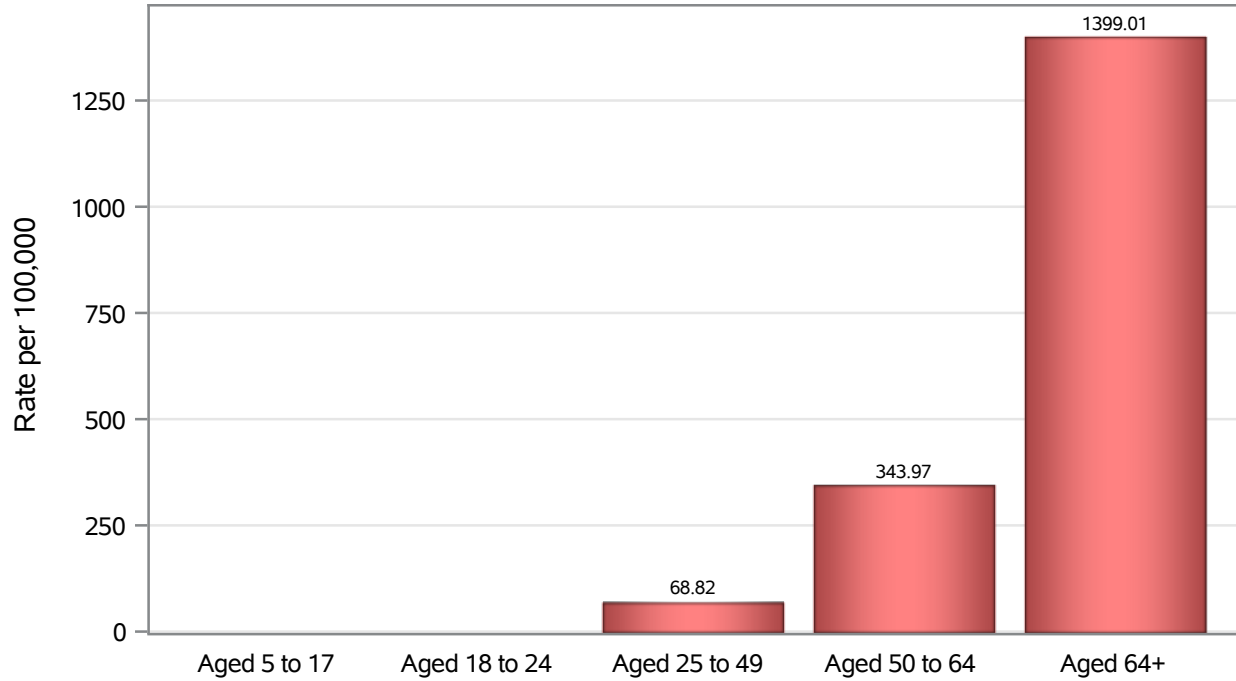
Hospitalization Age Rates in Las Vegas



Investigations are ongoing; data are subject to change.
Reporting through 03NOV2021

Las Vegas zip codes include 89101, 89102, 89104, 89106, 89108, 89109, 89110, 89117, 89129, 89130, 89131, 89143, 89146, 89149, 89166, 89145, 89144, 89134, 89107, 89128, 89138.

Death Age Rates in Las Vegas



Investigations are ongoing; data are subject to change.
Reporting through 03NOV2021

Las Vegas zip codes include 89101, 89102, 89104, 89106, 89108, 89109, 89110, 89117, 89129, 89130, 89131, 89143, 89146, 89149, 89166, 89145, 89144, 89134, 89107, 89128, 89138.

Table 5: Age and COVID19 in Las Vegas

Case Status	Age Categories	N	%	Population	Rate per 100,000
Cases	Aged 4 or less	2413	2.3	44,385	5436.5
	Aged 5 to 17	12121	11.4	124269	9753.8
	Aged 18 to 24	12750	12.0	58,081	21952
	Aged 25 to 49	46927	44.1	244105	19224
	Aged 50 to 64	20506	19.3	131698	15570
	Aged 64+	11666	11.0	103859	11233
	Unknown	23	0.0	.	.
Hospitalizations	Aged 4 or less	44	0.6	44,385	99.13
	Aged 5 to 17	78	1.1	124269	62.77
	Aged 18 to 24	160	2.2	58,081	275.48
	Aged 25 to 49	1736	24.0	244105	711.17
	Aged 50 to 64	2030	28.1	131698	1541.4
	Aged 64+	3178	44.0	103859	3059.9
	Deaths	Aged 5 to 17	2	0.1	124269
Aged 18 to 24		6	0.3	58,081	.
Aged 25 to 49		168	8.1	244105	68.82
Aged 50 to 64		453	21.8	131698	343.97
Aged 64+		1453	69.8	103859	1399.0

Note1: Population data source for calculating rate estimates: U.S. Census Bureau, ACS 5-year estimate.

Note2: Rates for categories with fewer than 12 cases are suppressed due to high relative standard error.

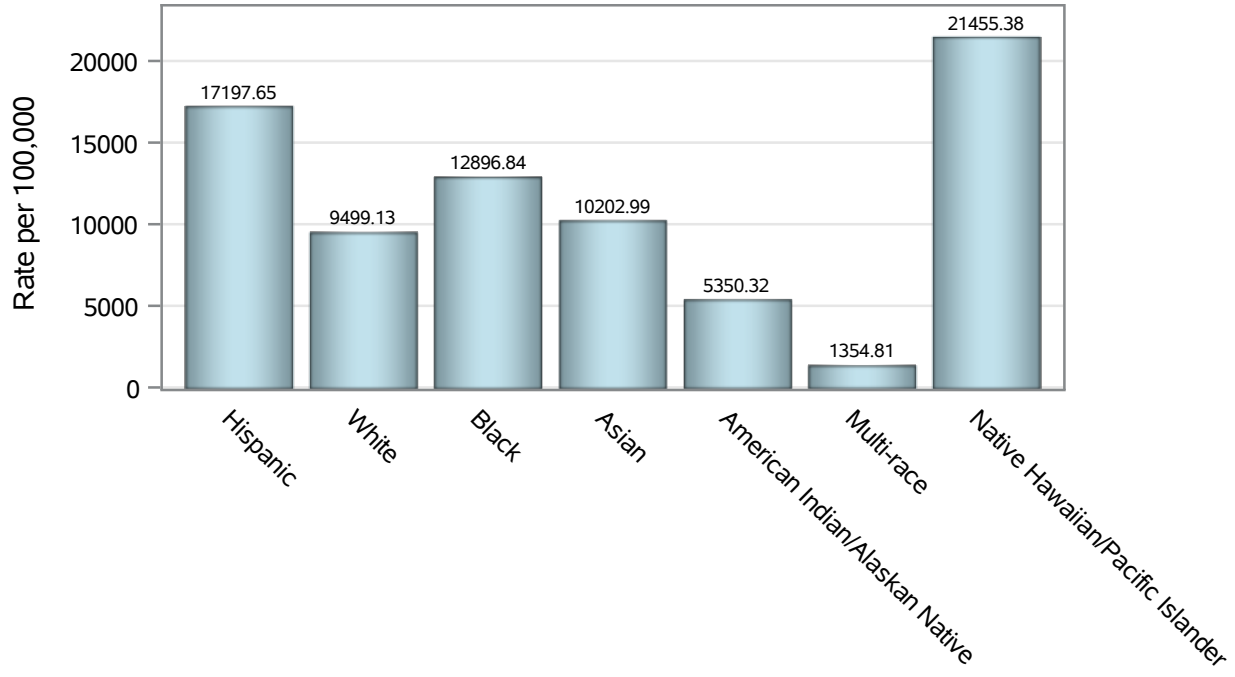
Note3: Hospitalizations are regardless of deceased status; Deaths are regardless of hospitalization status

Investigations are ongoing; data are subject to change.

Reporting through 03NOV2021

Las Vegas zip codes include 89101, 89102, 89104, 89106, 89108, 89109, 89110, 89117, 89129, 89130, 89131, 89143, 89146, 89149, 89166, 89145, 89144, 89134, 89107, 89128, 89138.

Case Race/Ethnicity Rates in Las Vegas

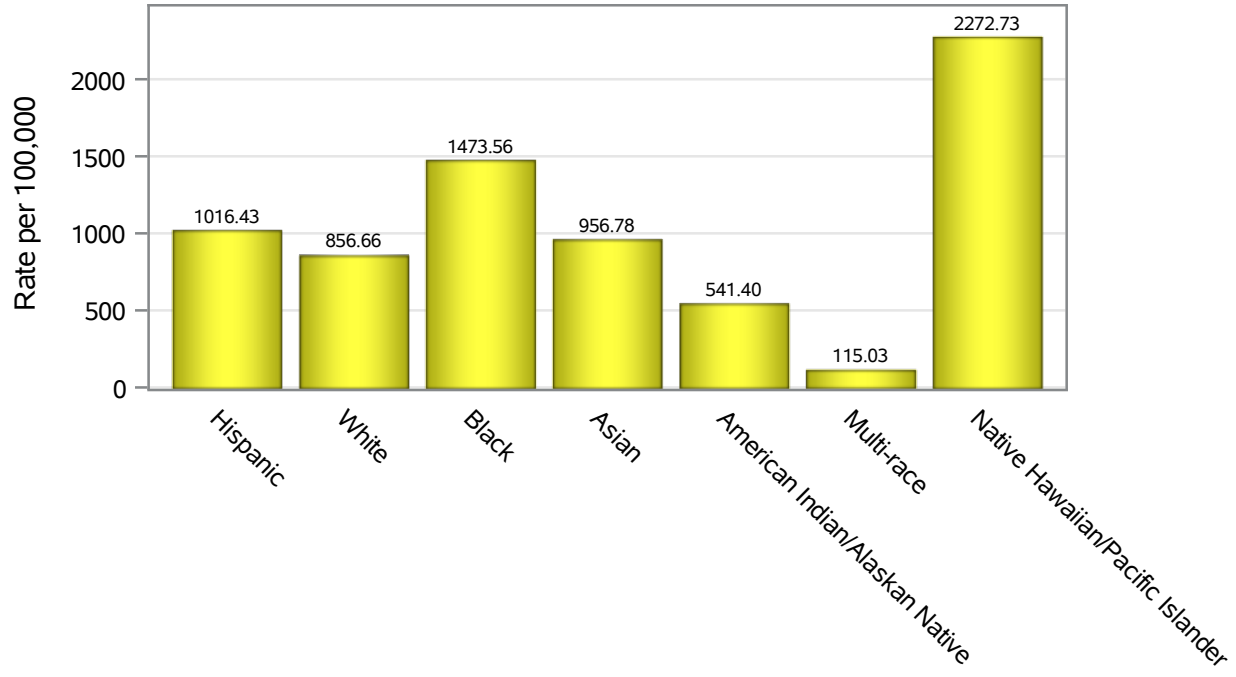


Investigations are ongoing; data are subject to change.

Reporting through 03NOV2021

Las Vegas zip codes include 89101, 89102, 89104, 89106, 89108, 89109, 89110, 89117, 89129, 89130, 89131, 89143, 89146, 89149, 89166, 89145, 89144, 89134, 89107, 89128, 89138.

Hospitalization Race/Ethnicity Rates in Las Vegas

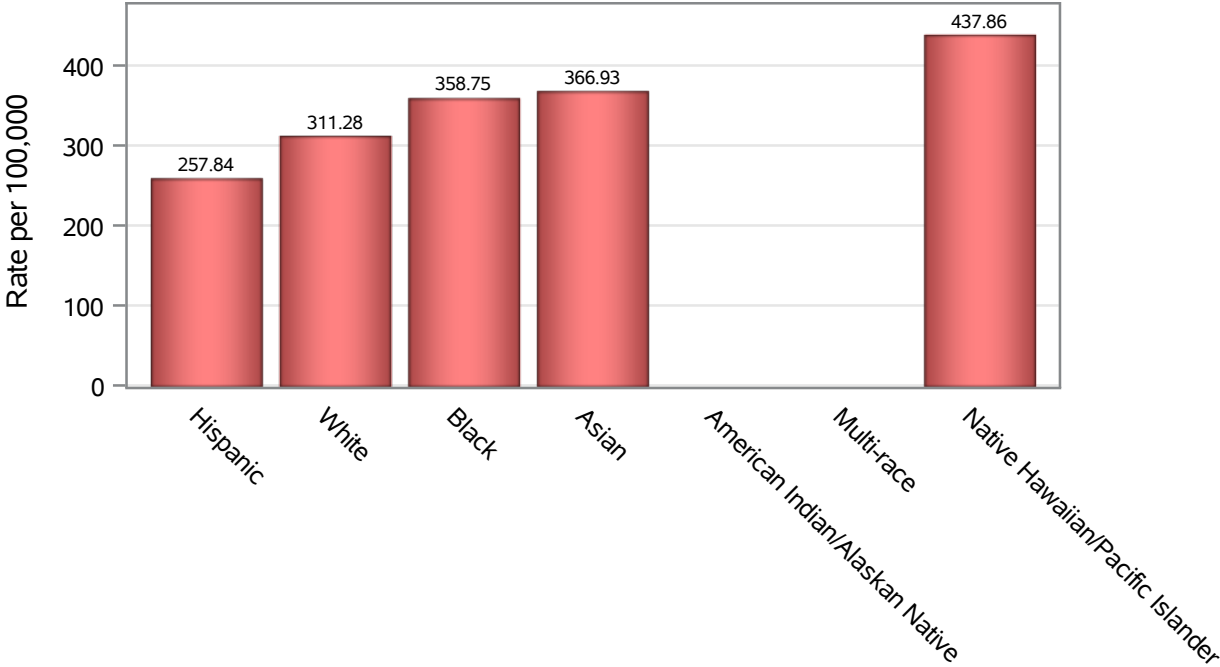


Investigations are ongoing; data are subject to change.

Reporting through 03NOV2021

Las Vegas zip codes include 89101, 89102, 89104, 89106, 89108, 89109, 89110, 89117, 89129, 89130, 89131, 89143, 89146, 89149, 89166, 89145, 89144, 89134, 89107, 89128, 89138.

Death Race/Ethnicity Rates in Las Vegas



Investigations are ongoing; data are subject to change.
Reporting through 03NOV2021

Las Vegas zip codes include 89101, 89102, 89104, 89106, 89108, 89109, 89110, 89117, 89129, 89130, 89131, 89143, 89146, 89149, 89166, 89145, 89144, 89134, 89107, 89128, 89138.

Table 6: Race/Ethnicity and COVID19 in Las Vegas

Case Status	Race Ethnicity Categories	N	%	Population	Rate per 100,000
Cases	Hispanic	39152	36.8	227659	17198
	White	30028	28.2	316113	9499.1
	Black	10030	9.4	77,771	12897
	Asian	5172	4.9	50,691	10203
	American Indian/Alaskan Native	168	0.2	3,140	5350.3
	Multi-race	318	0.3	23,472	1354.8
	Native Hawaiian/Pacific Islander	1029	1.0	4,796	21455
	Unknown	20509	19.3	.	.
Hospitalizations	Hispanic	2314	32.0	227659	1016.4
	White	2708	37.5	316113	856.66
	Black	1146	15.9	77,771	1473.6
	Asian	485	6.7	50,691	956.78
	American Indian/Alaskan Native	17	0.2	3,140	541.40
	Multi-race	27	0.4	23,472	115.03
	Native Hawaiian/Pacific Islander	109	1.5	4,796	2272.7
	Unknown	420	5.8	.	.
Deaths	Hispanic	587	28.2	227659	257.84
	White	984	47.3	316113	311.28
	Black	279	13.4	77,771	358.75
	Asian	186	8.9	50,691	366.93
	American Indian/Alaskan Native	4	0.2	3,140	.
	Multi-race	11	0.5	23,472	.
	Native Hawaiian/Pacific Islander	21	1.0	4,796	437.86
	Unknown	10	0.5	.	.

Note1: Population data source for calculating rate estimates: U.S. Census Bureau, ACS 5-year estimate.

Note2: Rates for categories with fewer than 12 cases are suppressed due to high relative standard error.

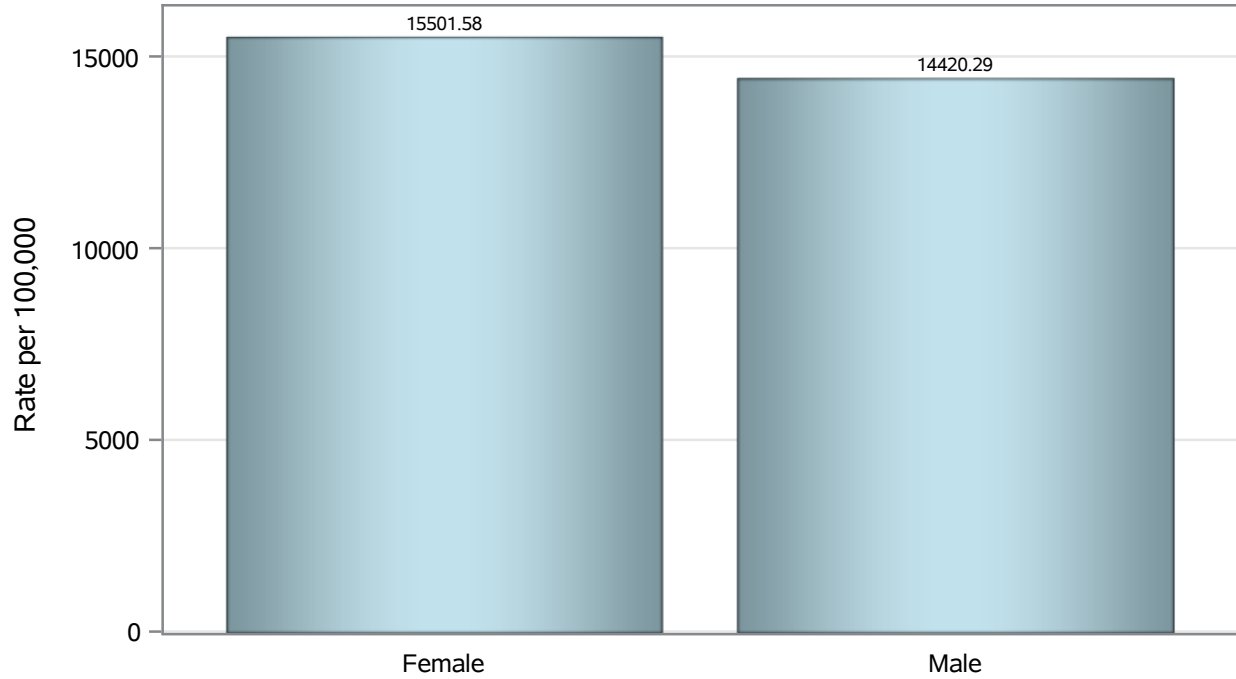
Note3: Hospitalizations are regardless of deceased status; Deaths are regardless of hospitalization status

Investigations are ongoing; data are subject to change.

Reporting through 03NOV2021

Las Vegas zip codes include 89101, 89102, 89104, 89106, 89108, 89109, 89110, 89117, 89129, 89130, 89131, 89143, 89146, 89149, 89166, 89145, 89144, 89134, 89107, 89128, 89138.

Case Birth Sex Rates in Las Vegas

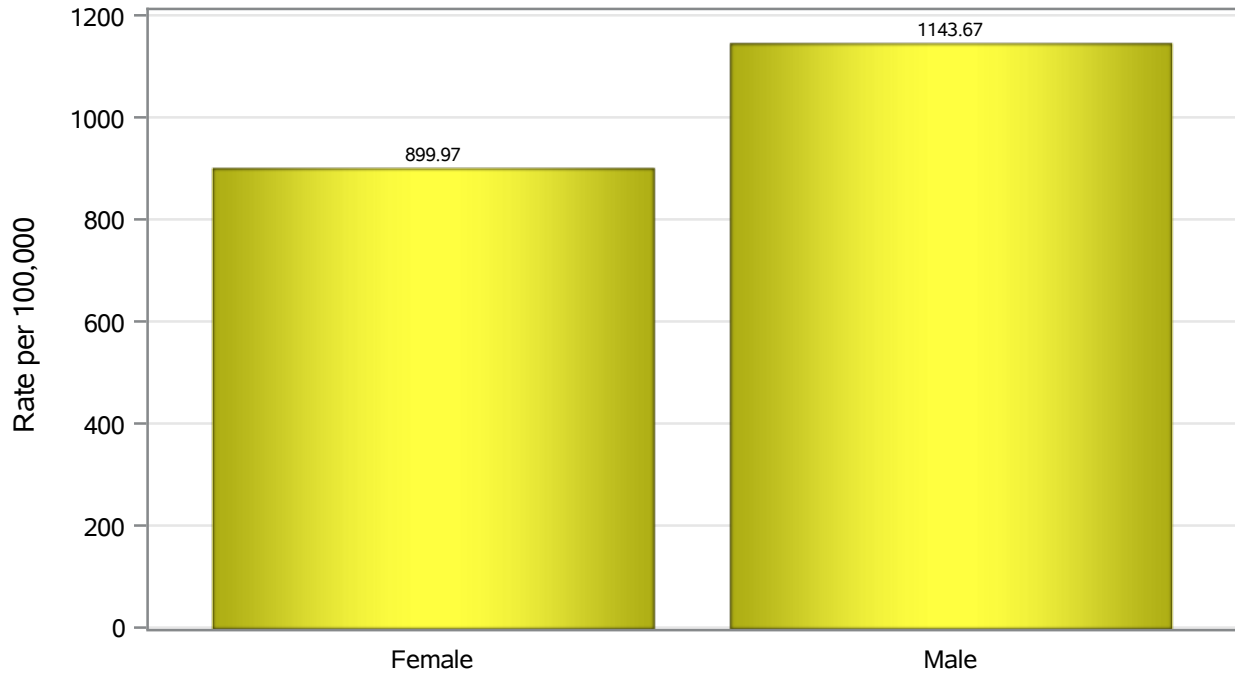


Investigations are ongoing; data are subject to change.

Reporting through 03NOV2021

Las Vegas zip codes include 89101, 89102, 89104, 89106, 89108, 89109, 89110, 89117, 89129, 89130, 89131, 89143, 89146, 89149, 89166, 89145, 89144, 89134, 89107, 89128, 89138.

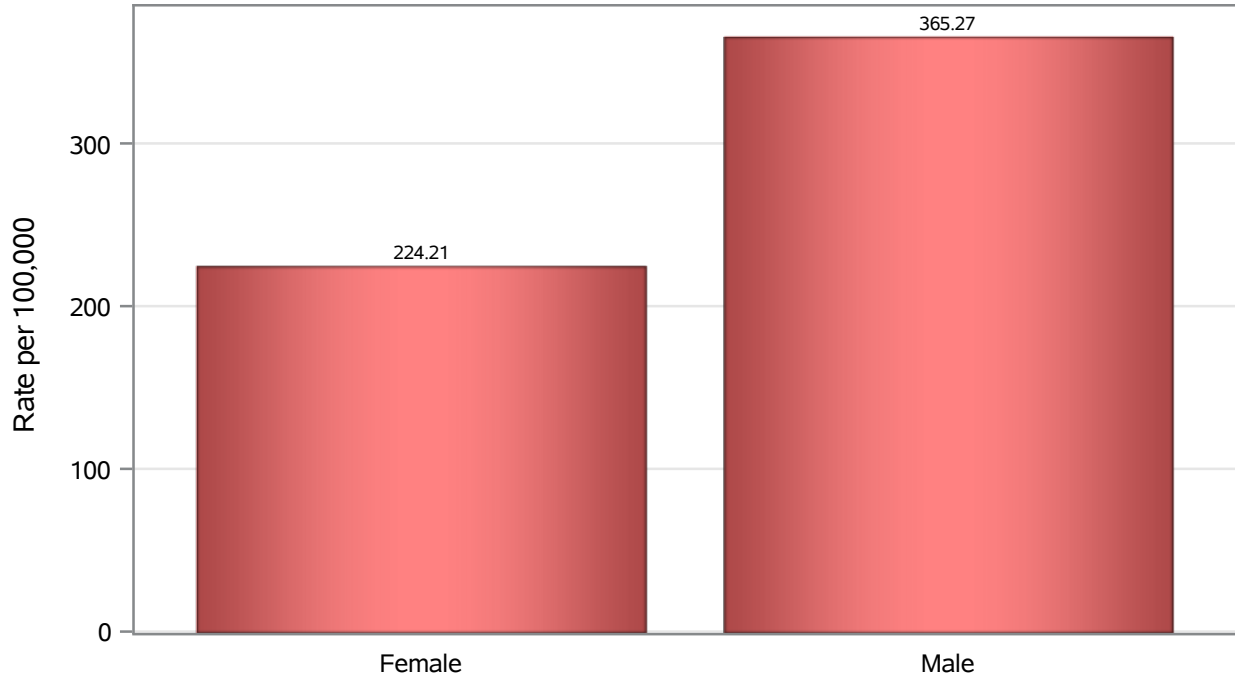
Hospitalization Birth Sex Rates in Las Vegas



Investigations are ongoing; data are subject to change.
Reporting through 03NOV2021

Las Vegas zip codes include 89101, 89102, 89104, 89106, 89108, 89109, 89110, 89117, 89129, 89130, 89131, 89143, 89146, 89149, 89166, 89145, 89144, 89134, 89107, 89128, 89138.

Death Birth Sex Rates in Las Vegas



Investigations are ongoing; data are subject to change.
Reporting through 03NOV2021

Las Vegas zip codes include 89101, 89102, 89104, 89106, 89108, 89109, 89110, 89117, 89129, 89130, 89131, 89143, 89146, 89149, 89166, 89145, 89144, 89134, 89107, 89128, 89138.

Table 7: Birth Sex and COVID19 in Las Vegas

Case Status	Birth Sex Categories	N	%	Population	Rate per 100,000
Cases	Female	54757	51.5	353235	15502
	Male	50927	47.9	353162	14420
	Unknown	722	0.7	.	.
Hospitalizations	Female	3179	44.0	353235	899.97
	Male	4039	55.9	353162	1143.7
	Unknown	8	0.1	.	.
Deaths	Female	792	38.0	353235	224.21
	Male	1290	62.0	353162	365.27

Note1: Population data source for calculating rate estimates: U.S. Census Bureau, ACS 5-year estimate.

Note2: Rates for categories with fewer than 12 cases are suppressed due to high relative standard error.

Note3: Hospitalizations are regardless of deceased status; Deaths are regardless of hospitalization status

Investigations are ongoing; data are subject to change.

Reporting through 03NOV2021

Las Vegas zip codes include 89101, 89102, 89104, 89106, 89108, 89109, 89110, 89117, 89129, 89130, 89131, 89143, 89146, 89149, 89166, 89145, 89144, 89134, 89107, 89128, 89138.