

COVID-19 Trends

Clark County, Nevada

Document creation date: November 3, 2021

- General notes: This report uses surveillance data collected by the Southern Nevada Health District. Due to delays related to laboratory processing, reporting, and case investigations, data from the most recent days are less complete than data from older time points. For this reason, as of June 10, 2020 this report will not display data from the previous three days prior to the date that the report was created. As many case investigations are ongoing, all data presented in this report are considered preliminary and subject to change. Data regarding cases, hospitalizations, deaths, and labs were last updated November 3, 2021 at 12:00 AM, and data is reported up through October 30, 2021.
- Cases: Symptom onset date was used for aggregating cases. If symptom onset date was missing, the following dates were substituted in this order: diagnosis date, lab collection date, report date (date case was reported to SNHD), event creation date (date case was entered into TriSano, SNHD's surveillance system).
- Hospitalizations: Admission date was used for aggregating hospitalizations. If admission date was missing, report date was substituted. If a person had more than one hospitalization after his/her COVID-19 diagnosis, only the first admission date was used.
- Deaths: Date of death was used for aggregating deaths. If date of death was missing, report date was used.
- For the "7-Day Average of Daily New Cases per 100K, by Age Group (Years)" graph and table, the population data source for calculating rate estimates was from Nevada State Demographer "2019 ASRHO Estimates and Projections Summary 2000 to 2038", 2020 projection, vintage 2019. Rates for individual age categories may be based on small numbers, which may give unstable estimates.
- All graphs in this report show data from approximately 60 days prior to the date of the report.
- All tables show data from the last 14 days before the current date, with the exception of the "Percent Change in Weekly Totals from Previous Week", which displays data from the previous eight completed weeks.
- For the "Percent of People Receiving COVID-19 Viral Tests Who Have Positive Results" graph, one person who has multiple specimens collected in one day is only reported once. If any test of that person is positive, that person counts as a positive result. If all tests of that individual are negative, that person counts as a negative result. Laboratory tests were included if they were a test assessing for the presence of SARS-CoV-2 viral RNA, for example PCR tests. Antibody tests were excluded.

COVID-19 Cases

Clark County, NV

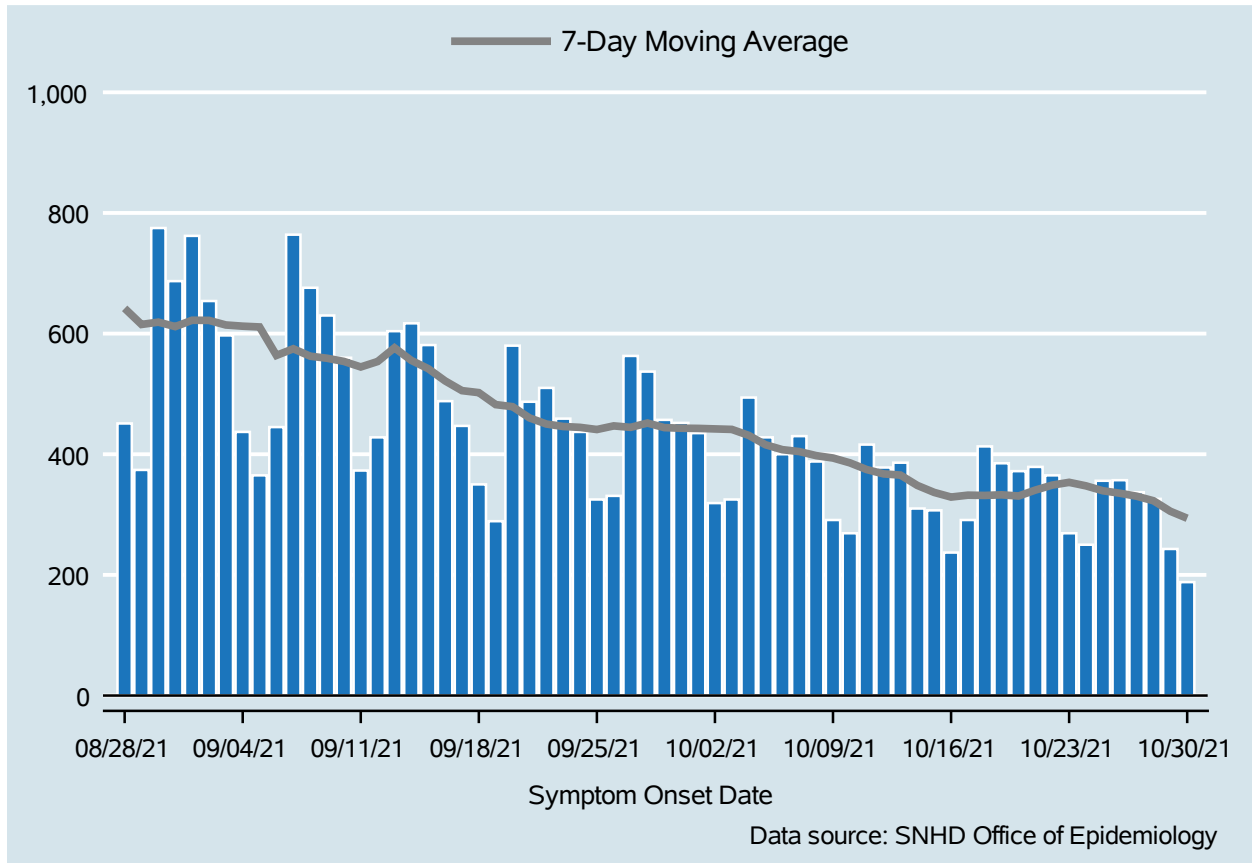


Table 1: COVID-19 Cases per Day, Clark County, NV

Date	Cases Per Day	7-Day Moving Average
Oct 17	291	332.1
Oct 18	413	331.7
Oct 19	385	332.7
Oct 20	372	330.7
Oct 21	379	340.6
Oct 22	365	348.9
Oct 23	269	353.4
Oct 24	250	347.6
Oct 25	356	339.4
Oct 26	357	335.4
Oct 27	337	330.4
Oct 28	326	322.9
Oct 29	243	305.4
Oct 30	188	293.9

COVID-19 Hospitalizations

Clark County, NV

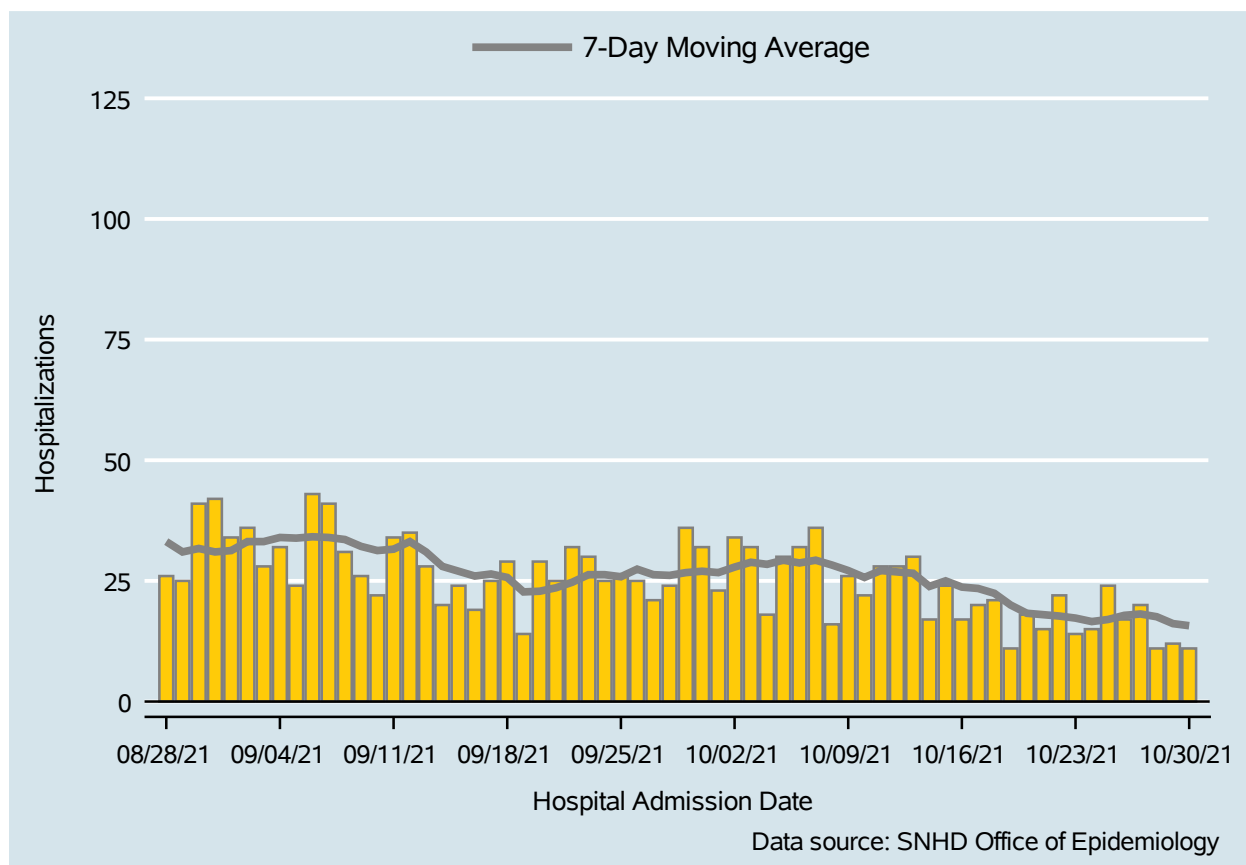


Table 2: COVID-19 Hospitalizations per Day, Clark County, NV

Date	Hospitalizations Per Day	7-Day Moving Average
Oct 17	20	23.4
Oct 18	21	22.4
Oct 19	11	20.0
Oct 20	18	18.3
Oct 21	15	18.0
Oct 22	22	17.7
Oct 23	14	17.3
Oct 24	15	16.6
Oct 25	24	17.0
Oct 26	17	17.9
Oct 27	20	18.1
Oct 28	11	17.6
Oct 29	12	16.1
Oct 30	11	15.7

COVID-19 Deaths

Clark County, NV

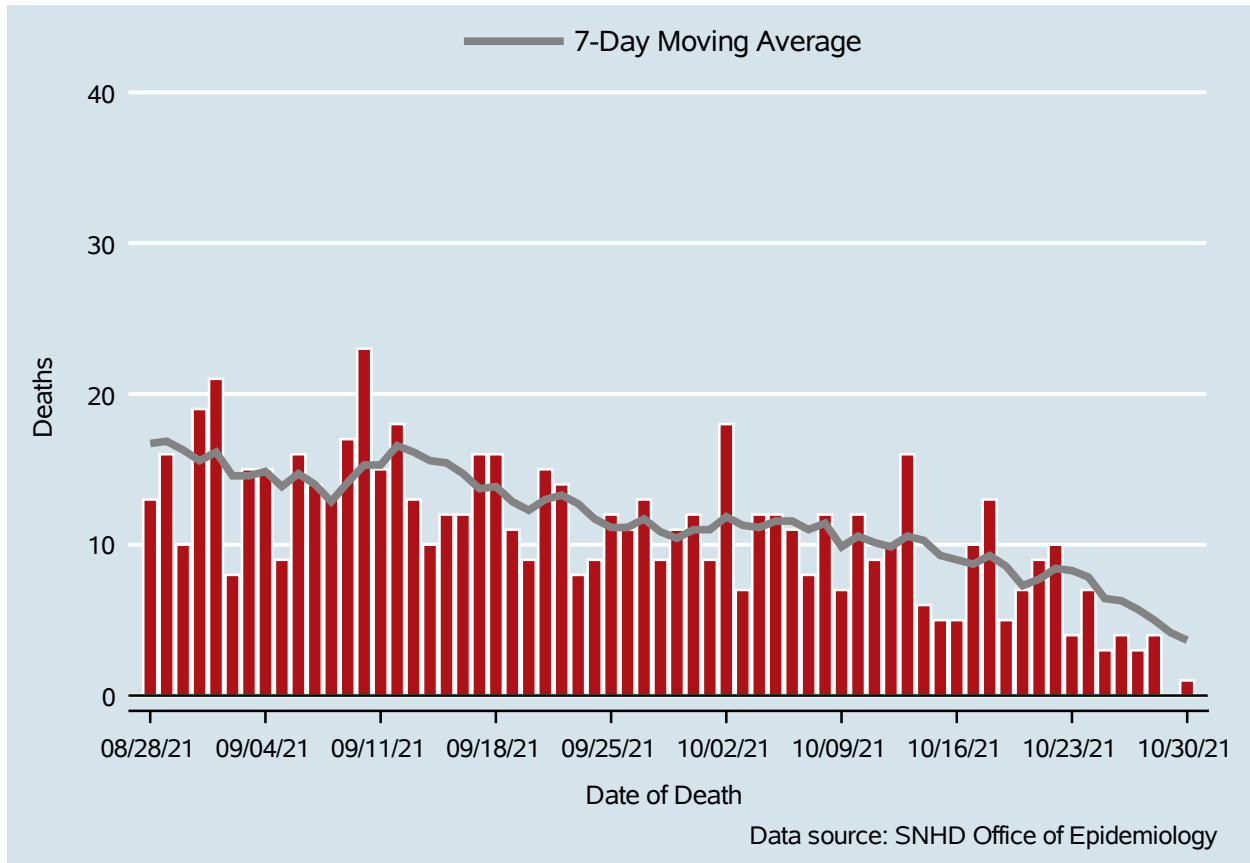


Table 3: COVID-19 Deaths per Day, Clark County, NV

Date	Deaths Per Day	7-Day Moving Average
Oct 17	10	8.7
Oct 18	13	9.3
Oct 19	5	8.6
Oct 20	7	7.3
Oct 21	9	7.7
Oct 22	10	8.4
Oct 23	4	8.3
Oct 24	7	7.9
Oct 25	3	6.4
Oct 26	4	6.3
Oct 27	3	5.7
Oct 28	4	5.0
Oct 29	.	4.2
Oct 30	1	3.7

7-Day Average of Daily New Cases per 100K, by Age Group (Years)

Clark County, NV

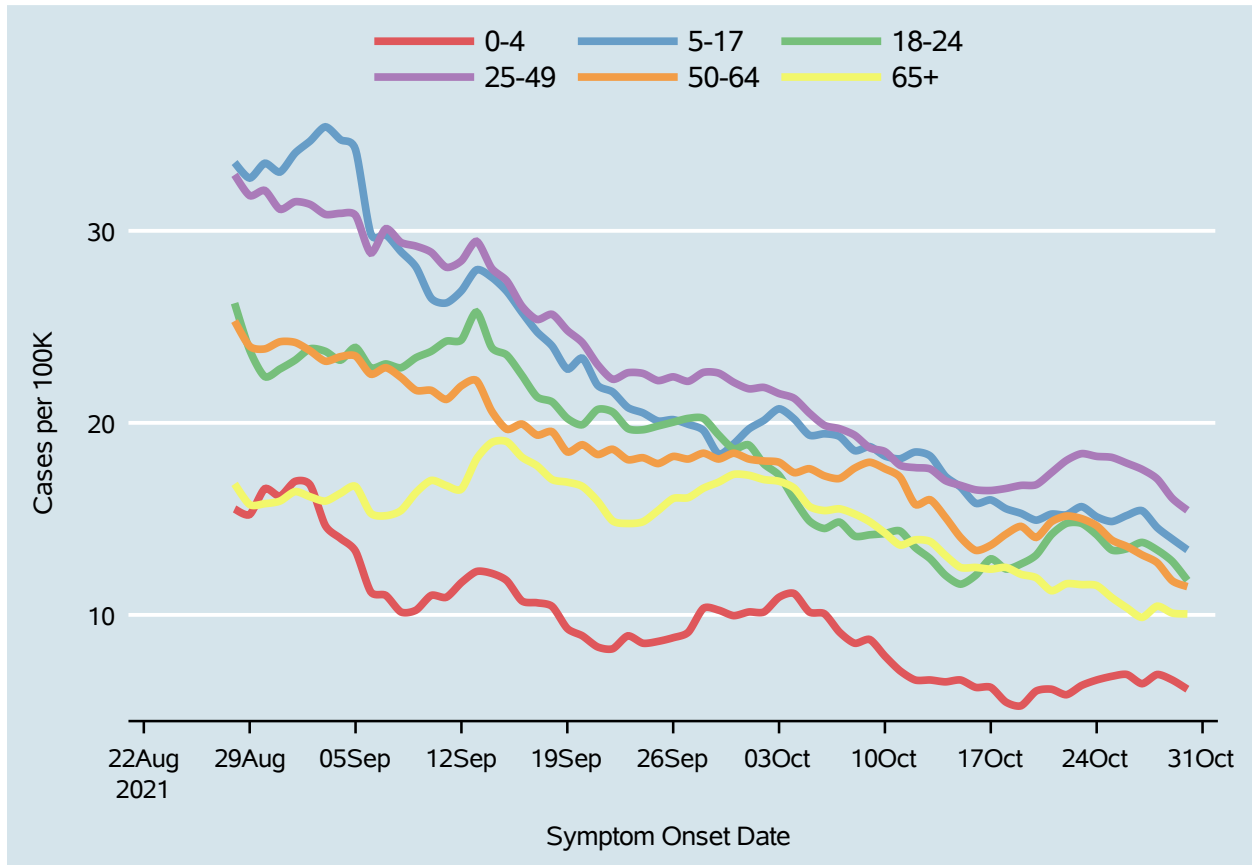
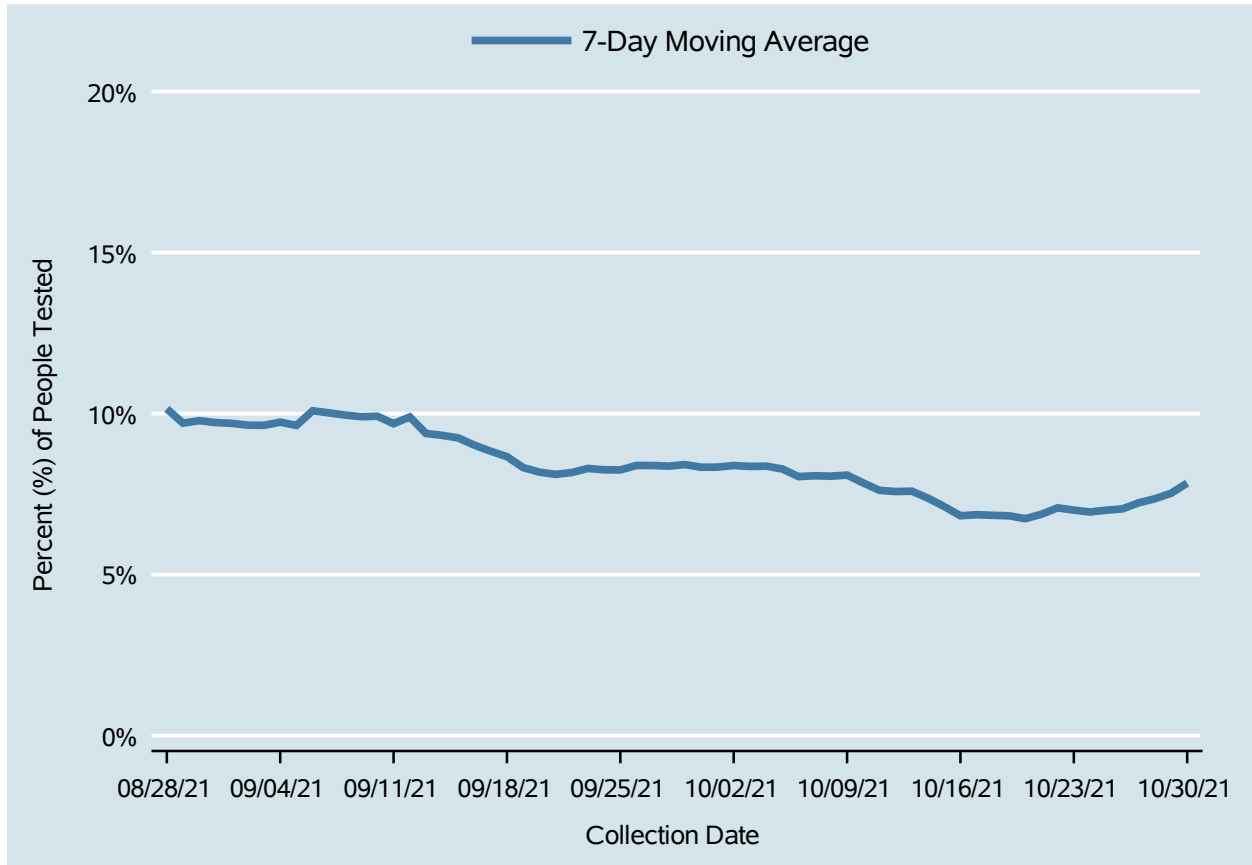


Table 4: 7-Day Average of Daily New Cases per 100K, by Age Group (Years)

Date	0-4	5-17	18-24	25-49	50-64	65+
Oct 17	6.2	16.0	12.9	16.5	13.6	12.4
Oct 18	5.5	15.5	12.4	16.6	14.2	12.5
Oct 19	5.3	15.3	12.7	16.7	14.6	12.1
Oct 20	6.0	14.9	13.1	16.8	14.0	11.9
Oct 21	6.1	15.2	14.2	17.4	14.8	11.3
Oct 22	5.8	15.2	14.8	18.0	15.1	11.6
Oct 23	6.3	15.6	14.8	18.4	15.0	11.6
Oct 24	6.6	15.1	14.2	18.3	14.6	11.5
Oct 25	6.8	14.9	13.4	18.2	13.9	10.9
Oct 26	6.9	15.2	13.4	17.9	13.6	10.4
Oct 27	6.4	15.4	13.8	17.6	13.1	9.9
Oct 28	6.9	14.5	13.4	17.1	12.7	10.5
Oct 29	6.6	13.9	12.8	16.1	11.8	10.1
Oct 30	6.1	13.4	11.8	15.4	11.5	10.0

Percent of People Receiving COVID-19 Viral Tests Who Have Positive Results

Clark County, NV



Report prepared by: Kellie Watkins, PhD, MS, Ying Zhang, PhD, MPH (Office of Epidemiology) and Lei Zhang, MS (Office of Informatics)