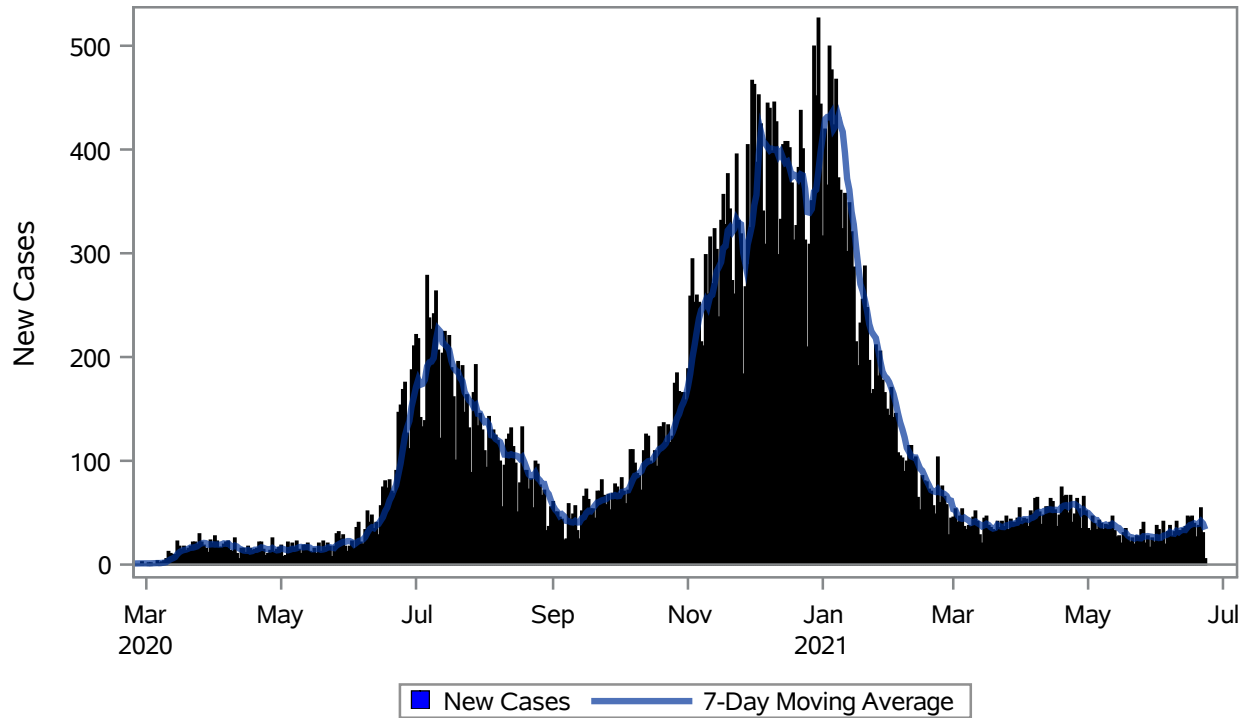


COVID19 Cases for Henderson, 7-Day Moving Average



Investigations are ongoing; data are subject to change.

Reporting through 23JUN2021

Henderson zip codes include 89002, 89011, 89012, 89014, 89015, 89044, 89052, 89074, 89119, 89120, 89122, 89123, 89124, 89183.

Table 1: New COVID19 Cases and 7-Day Moving Average in Henderson, Previous Two Weeks

Date (Daily)	New Cases	7-Day Moving Average
10JUN2021	41	32.43
11JUN2021	32	31.14
12JUN2021	32	33.00
13JUN2021	34	33.43
14JUN2021	36	33.29
15JUN2021	46	36.00
16JUN2021	45	38.00
17JUN2021	46	38.71
18JUN2021	39	39.71
19JUN2021	26	38.86
20JUN2021	37	39.29
21JUN2021	54	41.86

Note1: Event Date is calculated as follows based on completed information:

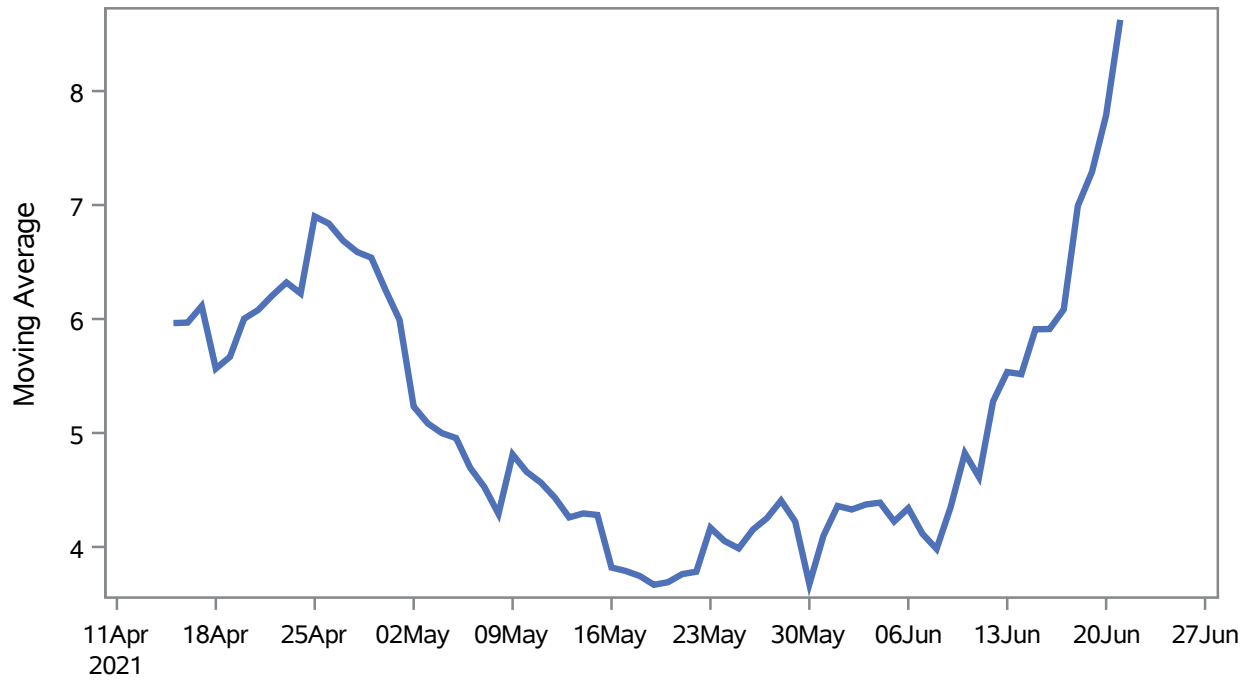
1) Disease onset date 2) Disease diagnosis date 3) Lab result collection date 4) Report date to SNHD.

Investigations are ongoing; data are subject to change.

Reporting through 23JUN2021

Henderson zip codes include 89002, 89011, 89012, 89014, 89015, 89044, 89052, 89074, 89119, 89120, 89122, 89123, 89124, 89183.

Percent of People Receiving COVID-19 Viral Tests Who Have Positive Results in Henderson



Investigations are ongoing; data are subject to change.

Reporting through 23JUN2021

Henderson zip codes include 89002, 89011, 89012, 89014, 89015, 89044, 89052, 89074, 89119, 89120, 89122, 89123, 89124, 89183.

Table 2: Percent of People Receiving COVID-19 Viral Tests Who Have Positive Results in Henderson

Collection Date	Positive	Negative	Equivocal	Total	% Positivity	7-Day Moving Average
07JUN2021	20	547		567	3.53	4.12
08JUN2021	19	469		488	3.89	3.98
09JUN2021	28	453		481	5.82	4.35
10JUN2021	35	416		451	7.76	4.82
11JUN2021	16	446		462	3.46	4.61
12JUN2021	21	254		275	7.64	5.28
13JUN2021	17	239		256	6.64	5.53
14JUN2021	20	569		589	3.40	5.52
15JUN2021	31	435		466	6.65	5.91
16JUN2021	29	468		497	5.84	5.91
17JUN2021	37	376		413	8.96	6.08
18JUN2021	42	385		427	9.84	6.99
19JUN2021	31	288		319	9.72	7.29
20JUN2021	33	293		326	10.12	7.79
21JUN2021	47	460	1	508	9.25	8.62

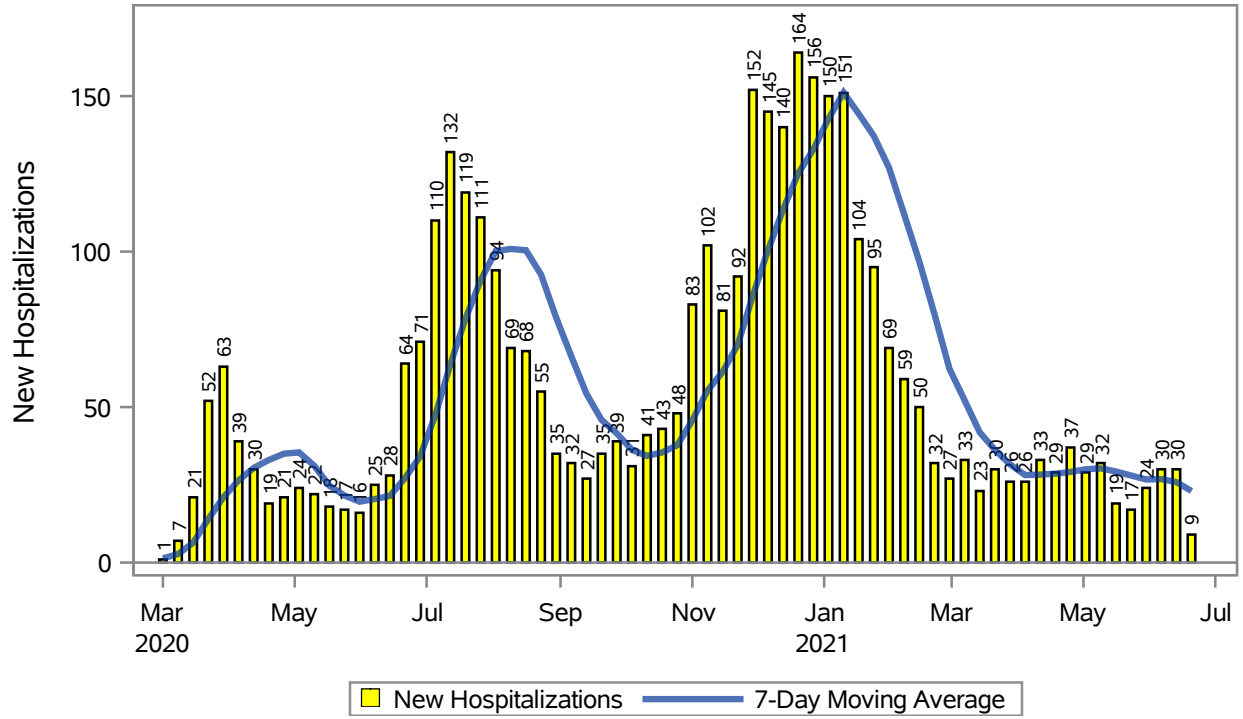
Note: Testing Data includes a 3 day delay

Investigations are ongoing; data are subject to change.

Reporting through 23JUN2021

Henderson zip codes include 89002, 89011, 89012, 89014, 89015, 89044, 89052, 89074, 89119, 89120, 89122, 89123, 89124, 89183.

COVID19 Hospitalizations for Henderson, 7-Day Moving Average



Investigations are ongoing; data are subject to change.

Reporting through 23JUN2021

Henderson zip codes include 89002, 89011, 89012, 89014, 89015, 89044, 89052, 89074, 89119, 89120, 89122, 89123, 89124, 89183.

Table 3: New COVID19-Related Hospitalizations and 7-Day Moving Average in Henderson, previous month

Week	Hospitalizations	7-Day Moving Average
30MAY2021	24	26.7
06JUN2021	30	26.9
13JUN2021	30	25.9
20JUN2021	9	23.0

Note1: Admission Date is calculated as follows based on completed information:
A) COVID19 Case is hospitalized B) COVID19 Case has a hospital admission date.

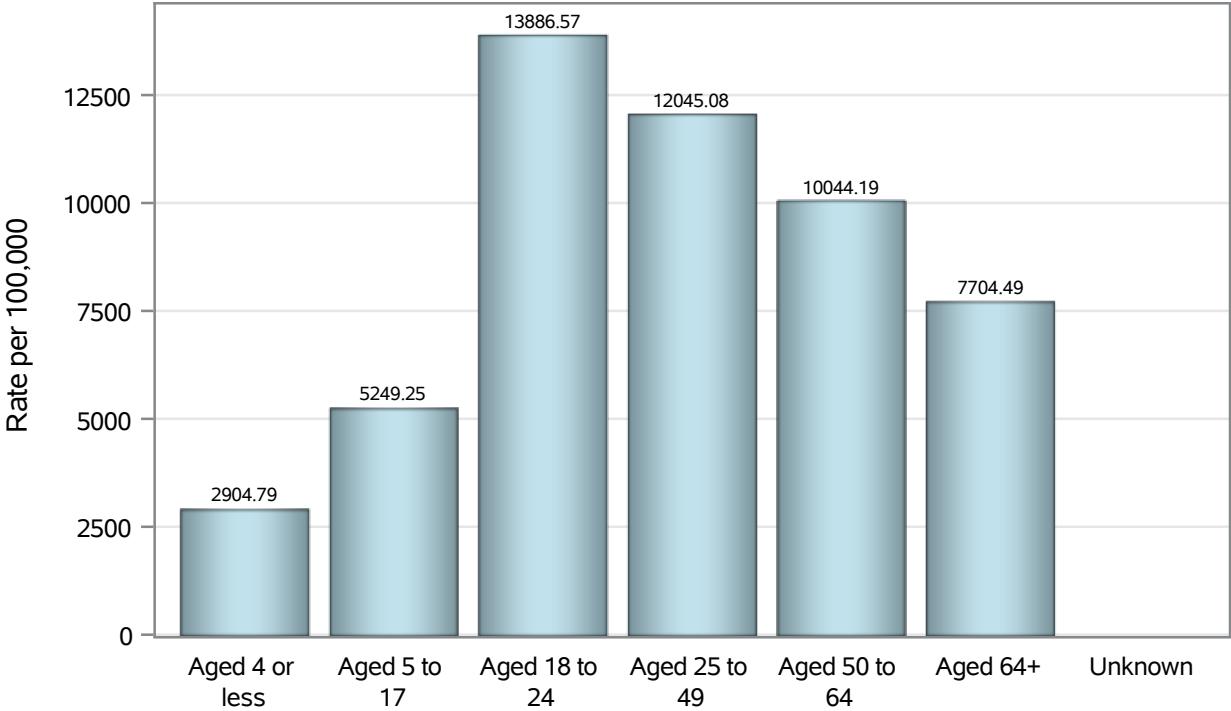
If admission date is missing, then the following is substituted temporarily, in order:
1) Disease onset date 2) Disease diagnosis date 3) Lab result collection date 4) Report date to SNHD.

Investigations are ongoing; data are subject to change.

Reporting through 23JUN2021

Henderson zip codes include 89002, 89011, 89012, 89014, 89015, 89044, 89052, 89074, 89119, 89120, 89122, 89123, 89124, 89183.

Case Age Rates in Henderson

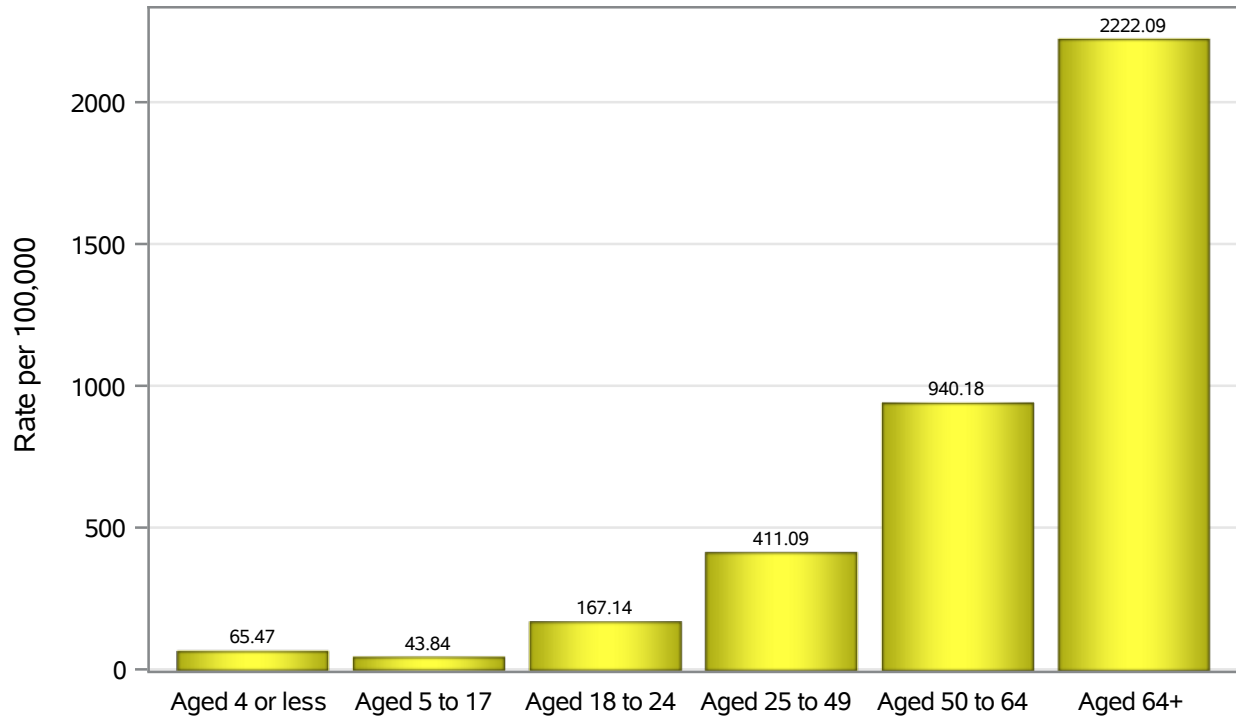


Investigations are ongoing; data are subject to change.

Reporting through 23JUN2021

Henderson zip codes include 89002, 89011, 89012, 89014, 89015, 89044, 89052, 89074, 89119, 89120, 89122, 89123, 89124, 89183.

Hospitalization Age Rates in Henderson

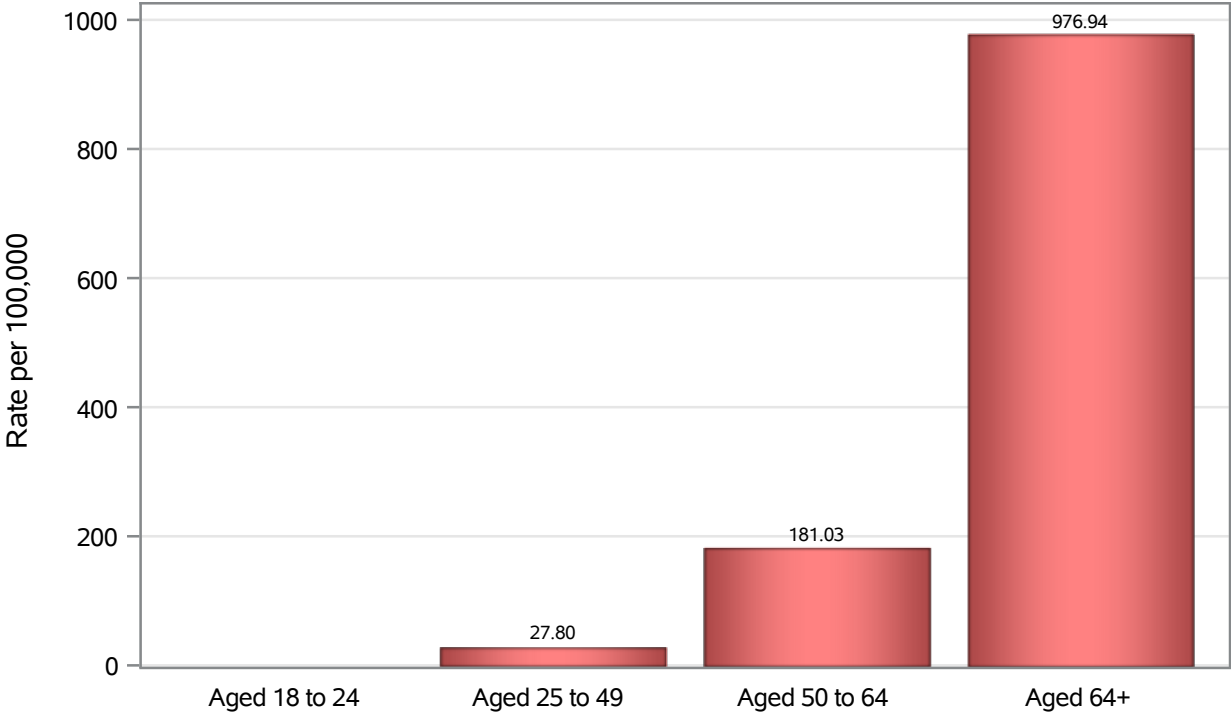


Investigations are ongoing; data are subject to change.

Reporting through 23JUN2021

Henderson zip codes include 89002, 89011, 89012, 89014, 89015, 89044, 89052, 89074, 89119, 89120, 89122, 89123, 89124, 89183.

Death Age Rates in Henderson



Investigations are ongoing; data are subject to change.

Reporting through 23JUN2021

Henderson zip codes include 89002, 89011, 89012, 89014, 89015, 89044, 89052, 89074, 89119, 89120, 89122, 89123, 89124, 89183.

Table 5: Age and COVID19 in Henderson

Case Status	Age Categories	N	%	Population	Rate per 100,000
Cases	Aged 4 or less	843	1.7	29,021	2904.8
	Aged 5 to 17	4311	8.5	82,126	5249.3
	Aged 18 to 24	6148	12.1	44,273	13887
	Aged 25 to 49	22532	44.3	187064	12045
	Aged 50 to 64	10320	20.3	102746	10044
	Aged 64+	6664	13.1	86,495	7704.5
	Unknown	11	0.0	.	.
Hospitalizations	Aged 4 or less	19	0.5	29,021	65.47
	Aged 5 to 17	36	1.0	82,126	43.84
	Aged 18 to 24	74	2.0	44,273	167.14
	Aged 25 to 49	769	20.3	187064	411.09
	Aged 50 to 64	966	25.5	102746	940.18
	Aged 64+	1922	50.8	86,495	2222.1
	Deaths	Aged 18 to 24	1	0.1	44,273
Aged 25 to 49		52	4.8	187064	27.80
Aged 50 to 64		186	17.2	102746	181.03
Aged 64+		845	78.0	86,495	976.94

Note1: Population data source for calculating rate estimates: U.S. Census Bureau, ACS 5-year estimate.

Note2: Rates for categories with fewer than 12 cases are suppressed due to high relative standard error.

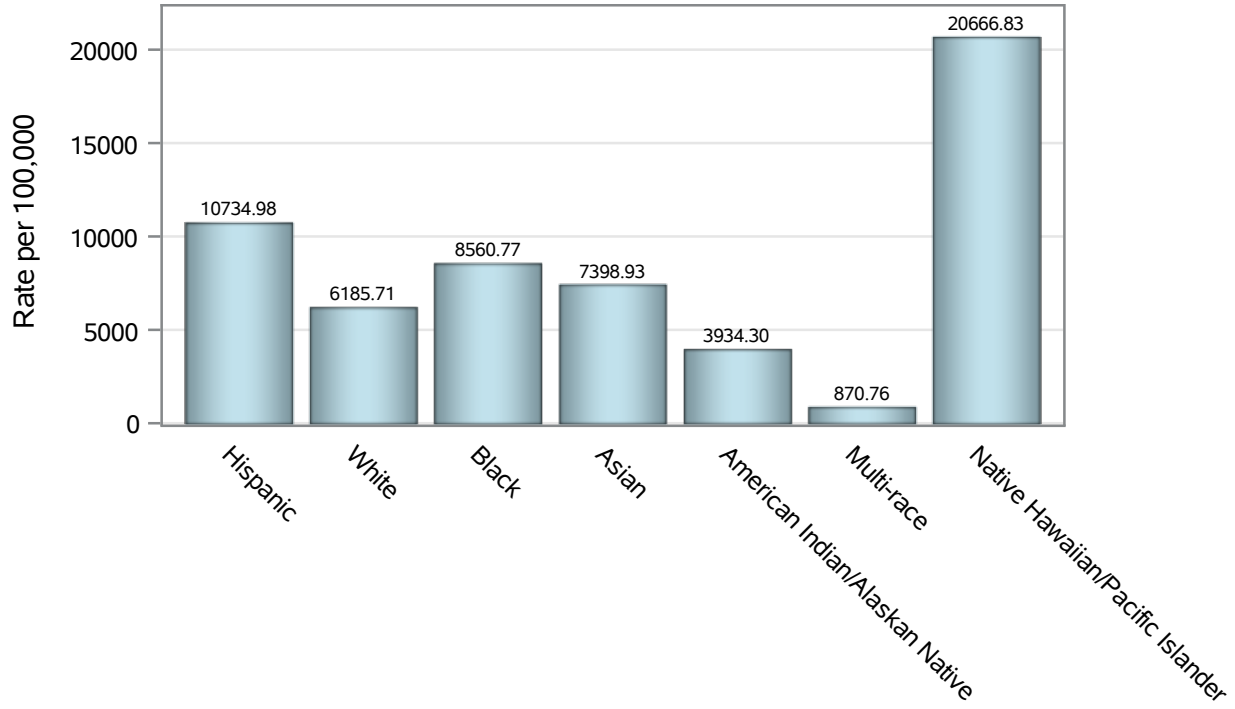
Note3: Hospitalizations are regardless of deceased status; Deaths are regardless of hospitalization status

Investigations are ongoing; data are subject to change.

Reporting through 23JUN2021

Henderson zip codes include 89002, 89011, 89012, 89014, 89015, 89044, 89052, 89074, 89119, 89120, 89122, 89123, 89124, 89183.

Case Race/Ethnicity Rates in Henderson

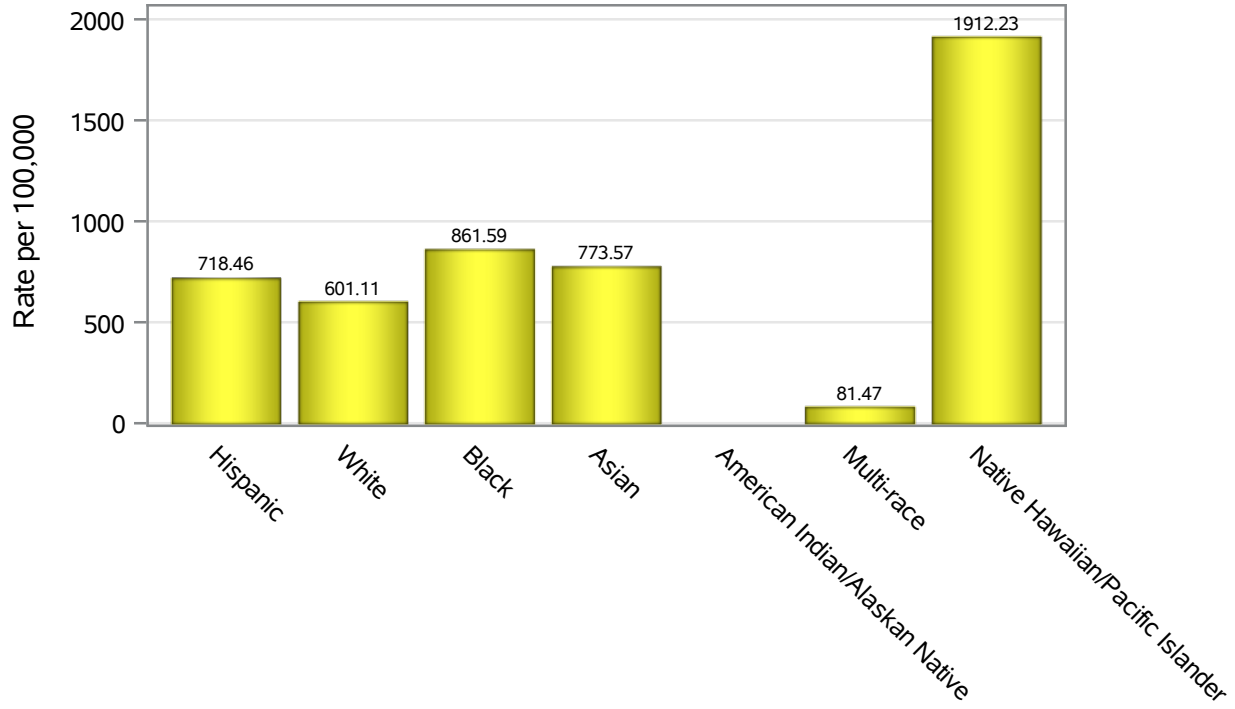


Investigations are ongoing; data are subject to change.

Reporting through 23JUN2021

Henderson zip codes include 89002, 89011, 89012, 89014, 89015, 89044, 89052, 89074, 89119, 89120, 89122, 89123, 89124, 89183.

Hospitalization Race/Ethnicity Rates in Henderson

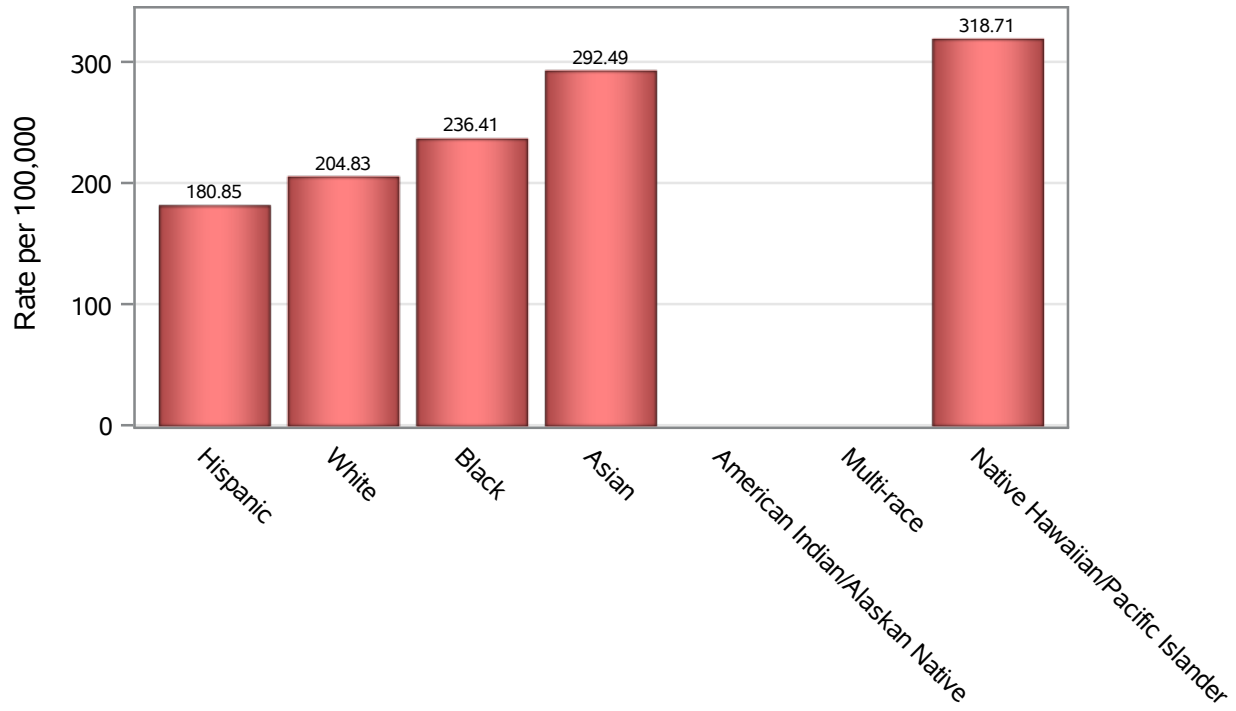


Investigations are ongoing; data are subject to change.

Reporting through 23JUN2021

Henderson zip codes include 89002, 89011, 89012, 89014, 89015, 89044, 89052, 89074, 89119, 89120, 89122, 89123, 89124, 89183.

Death Race/Ethnicity Rates in Henderson



Investigations are ongoing; data are subject to change.

Reporting through 23JUN2021

Henderson zip codes include 89002, 89011, 89012, 89014, 89015, 89044, 89052, 89074, 89119, 89120, 89122, 89123, 89124, 89183.

Table 6: Race/Ethnicity and COVID19 in Henderson

Case Status	Race Ethnicity Categories	N	%	Population	Rate per 100,000
Cases	Hispanic	13059	25.7	121649	10735
	White	18029	35.5	291462	6185.7
	Black	3259	6.4	38,069	8560.8
	Asian	3845	7.6	51,967	7398.9
	American Indian/Alaskan Native	103	0.2	2,618	3934.3
	Multi-race	171	0.3	19,638	870.76
	Native Hawaiian/Pacific Islander	843	1.7	4,079	20667
	Unknown	11520	22.7	.	.
Hospitalizations	Hispanic	874	23.1	121649	718.46
	White	1752	46.3	291462	601.11
	Black	328	8.7	38,069	861.59
	Asian	402	10.6	51,967	773.57
	American Indian/Alaskan Native	5	0.1	2,618	.
	Multi-race	16	0.4	19,638	81.47
	Native Hawaiian/Pacific Islander	78	2.1	4,079	1912.2
	Unknown	331	8.7	.	.
Deaths	Hispanic	220	20.3	121649	180.85
	White	597	55.1	291462	204.83
	Black	90	8.3	38,069	236.41
	Asian	152	14.0	51,967	292.49
	American Indian/Alaskan Native	2	0.2	2,618	.
	Multi-race	5	0.5	19,638	.
	Native Hawaiian/Pacific Islander	13	1.2	4,079	318.71
	Unknown	5	0.5	.	.

Note1: Population data source for calculating rate estimates: U.S. Census Bureau, ACS 5-year estimate.

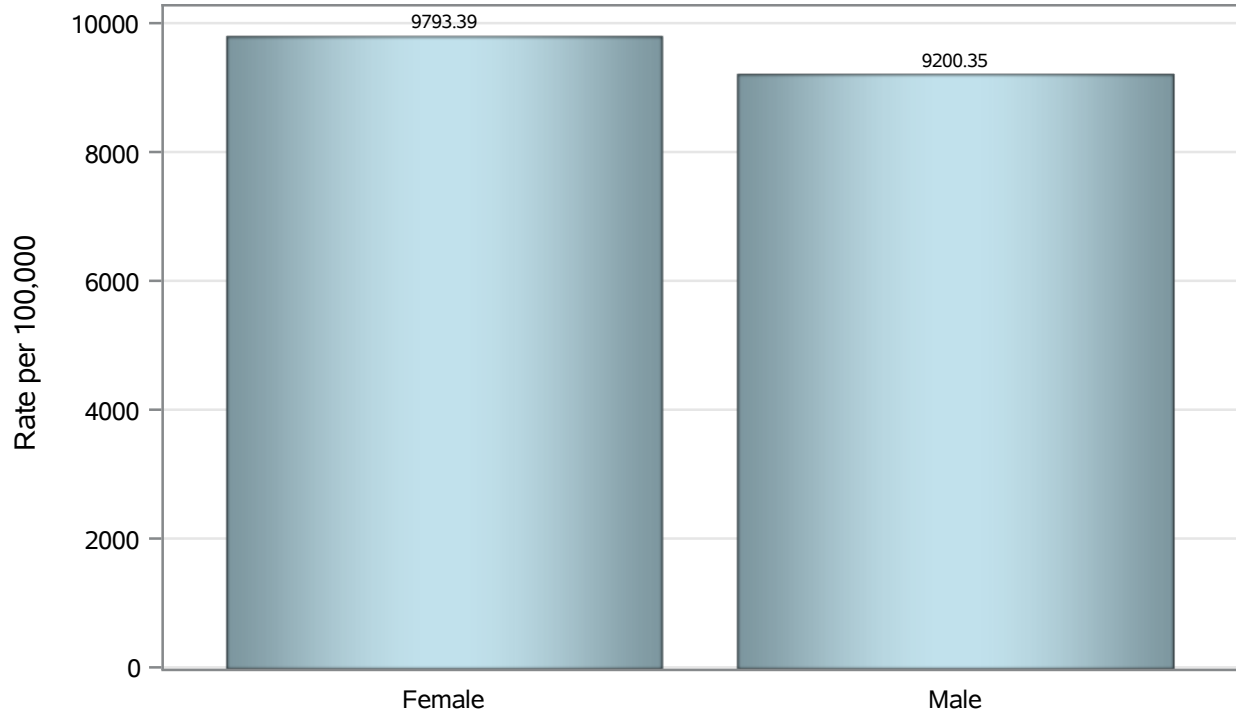
Note2: Rates for categories with fewer than 12 cases are suppressed due to high relative standard error.

Note3: Hospitalizations are regardless of deceased status; Deaths are regardless of hospitalization status

**Investigations are ongoing; data are subject to change.
Reporting through 23JUN2021**

Henderson zip codes include 89002, 89011, 89012, 89014, 89015, 89044, 89052, 89074, 89119, 89120, 89122, 89123, 89124, 89183.

Case Birth Sex Rates in Henderson

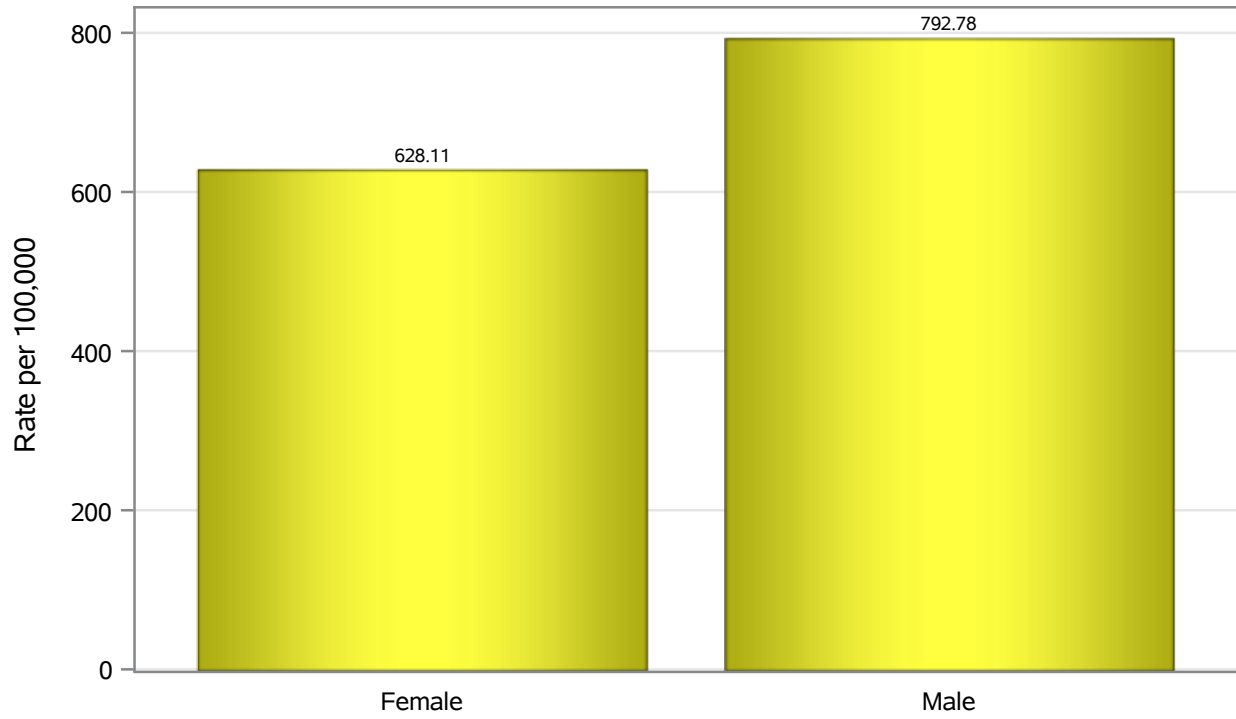


Investigations are ongoing; data are subject to change.

Reporting through 23JUN2021

Henderson zip codes include 89002, 89011, 89012, 89014, 89015, 89044, 89052, 89074, 89119, 89120, 89122, 89123, 89124, 89183.

Hospitalization Birth Sex Rates in Henderson

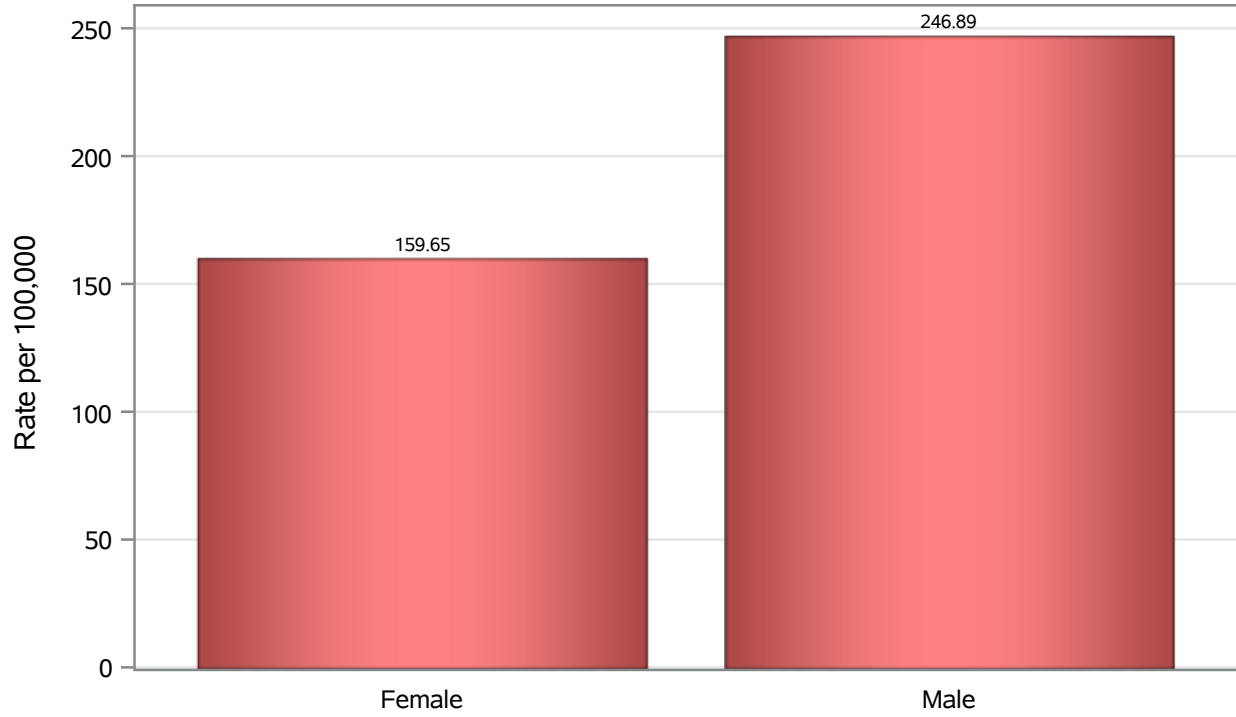


Investigations are ongoing; data are subject to change.

Reporting through 23JUN2021

Henderson zip codes include 89002, 89011, 89012, 89014, 89015, 89044, 89052, 89074, 89119, 89120, 89122, 89123, 89124, 89183.

Death Birth Sex Rates in Henderson



Investigations are ongoing; data are subject to change.

Reporting through 23JUN2021

Henderson zip codes include 89002, 89011, 89012, 89014, 89015, 89044, 89052, 89074, 89119, 89120, 89122, 89123, 89124, 89183.

Table 7: Birth Sex and COVID19 in Henderson

Case Status	Birth Sex Categories	N	%	Population	Rate per 100,000
Cases	Female	26132	51.4	266833	9793.4
	Male	24371	47.9	264892	9200.4
	Unknown	326	0.6	.	.
Hospitalizations	Female	1676	44.3	266833	628.11
	Male	2100	55.5	264892	792.78
	Unknown	10	0.3	.	.
Deaths	Female	426	39.3	266833	159.65
	Male	654	60.3	264892	246.89
	Unknown	4	0.4	.	.

Note1: Population data source for calculating rate estimates: U.S. Census Bureau, ACS 5-year estimate.

Note2: Rates for categories with fewer than 12 cases are suppressed due to high relative standard error.

Note3: Hospitalizations are regardless of deceased status; Deaths are regardless of hospitalization status

Investigations are ongoing; data are subject to change.

Reporting through 23JUN2021

Henderson zip codes include 89002, 89011, 89012, 89014, 89015, 89044, 89052, 89074, 89119, 89120, 89122, 89123, 89124, 89183.