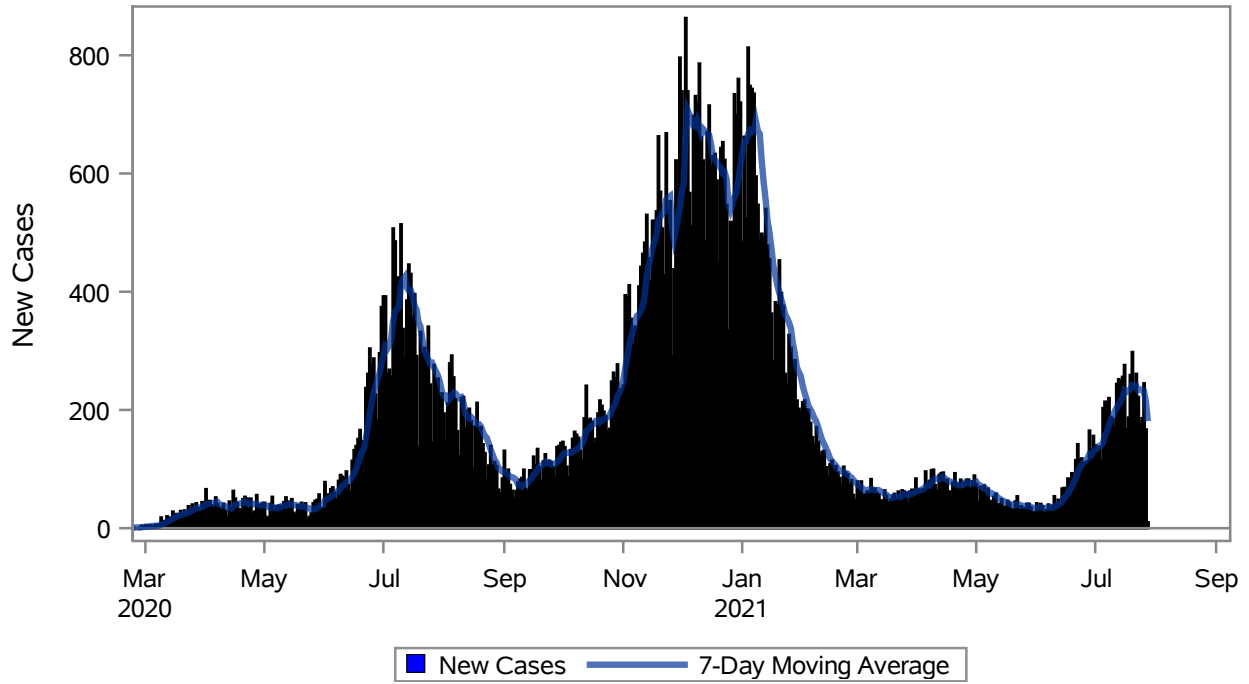


COVID19 Cases for Las Vegas, 7-Day Moving Average



Investigations are ongoing; data are subject to change.

Reporting through 28JUL2021

Las Vegas zip codes include 89101, 89102, 89104, 89106, 89108, 89109, 89110, 89117, 89129, 89130, 89131, 89143, 89146, 89149, 89166, 89145, 89144, 89134, 89107, 89128, 89138.

Table 1: New COVID19 Cases and 7-Day Moving Average in Las Vegas, Previous Two Weeks

Date (Daily)	New Cases	7-Day Moving Average
15JUL2021	256	220.43
16JUL2021	276	233.00
17JUL2021	167	230.43
18JUL2021	187	232.86
19JUL2021	259	235.00
20JUL2021	298	241.57
21JUL2021	238	240.14
22JUL2021	261	240.86
23JUL2021	222	233.14
24JUL2021	176	234.43
25JUL2021	186	234.29
26JUL2021	245	232.29

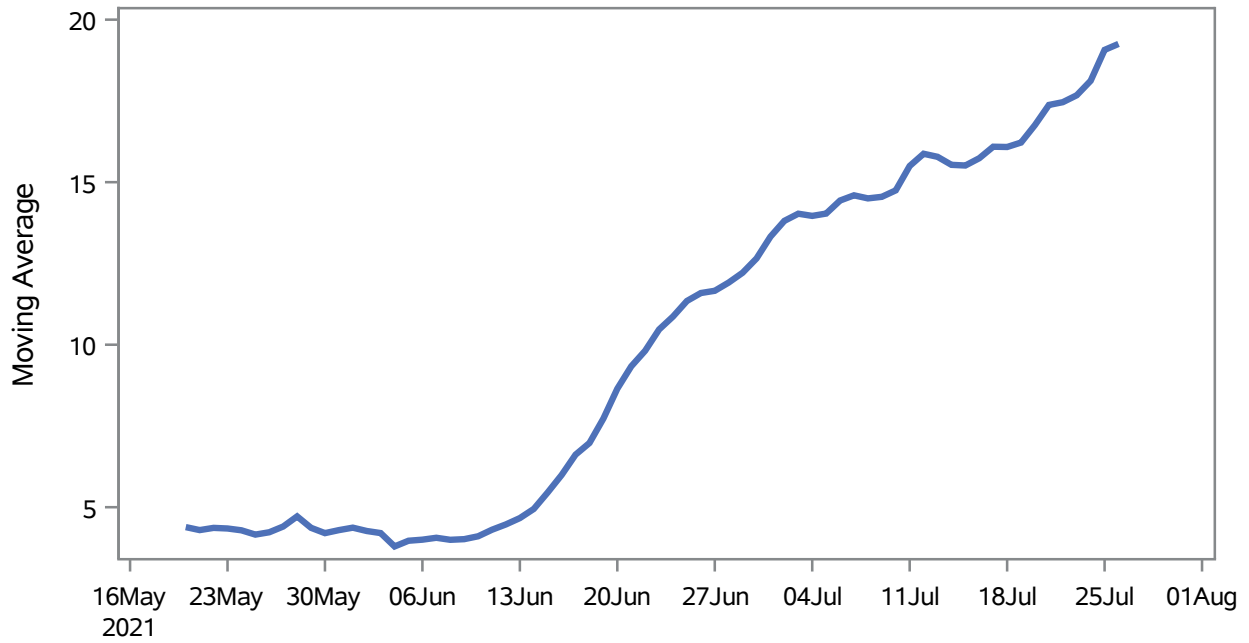
Note1: Event Date is calculated as follows based on completed information:
1) Disease onset date 2) Disease diagnosis date 3) Lab result collection date 4) Report date to SNHD.

Investigations are ongoing; data are subject to change.

Reporting through 28JUL2021

Las Vegas zip codes include 89101, 89102, 89104, 89106, 89108, 89109, 89110, 89117, 89129, 89130, 89131, 89143, 89146, 89149, 89166, 89145, 89144, 89134, 89107, 89128, 89138.

Percent of People Receiving COVID-19 Viral Tests Who Have Positive Results in Las Vegas



Investigations are ongoing; data are subject to change.
Reporting through 28JUL2021

Las Vegas zip codes include 89101, 89102, 89104, 89106, 89108, 89109, 89110, 89117, 89129, 89130, 89131, 89143, 89146, 89149, 89166, 89145, 89144, 89134, 89107, 89128, 89138.

Table 2: Percent of People Receiving COVID-19 Viral Tests Who Have Positive Results in Las Vegas

Collection Date	Positive	Negative	Equivocal	Total	% Positivity	7-Day Moving Average
12JUL2021	636	3458	3	4097	15.52	15.9
13JUL2021	676	4047	6	4740	14.26	15.8
14JUL2021	666	4014	3	4695	14.19	15.5
15JUL2021	712	3798	7	4532	15.71	15.5
16JUL2021	720	3668	2	4435	16.23	15.7
17JUL2021	526	2222	4	2752	19.11	16.1
18JUL2021	459	2152	2	2616	17.55	16.1
19JUL2021	718	3617	1	4355	16.49	16.2
20JUL2021	841	3807	4	4664	18.03	16.8
21JUL2021	750	3274	2	4053	18.50	17.4
22JUL2021	790	4028	7	4844	16.31	17.5
23JUL2021	779	3596		4395	17.72	17.7
24JUL2021	599	2091		2694	22.23	18.1
25JUL2021	586	1820	4	2422	24.19	19.1
26JUL2021	806	3723	2	4535	17.77	19.3

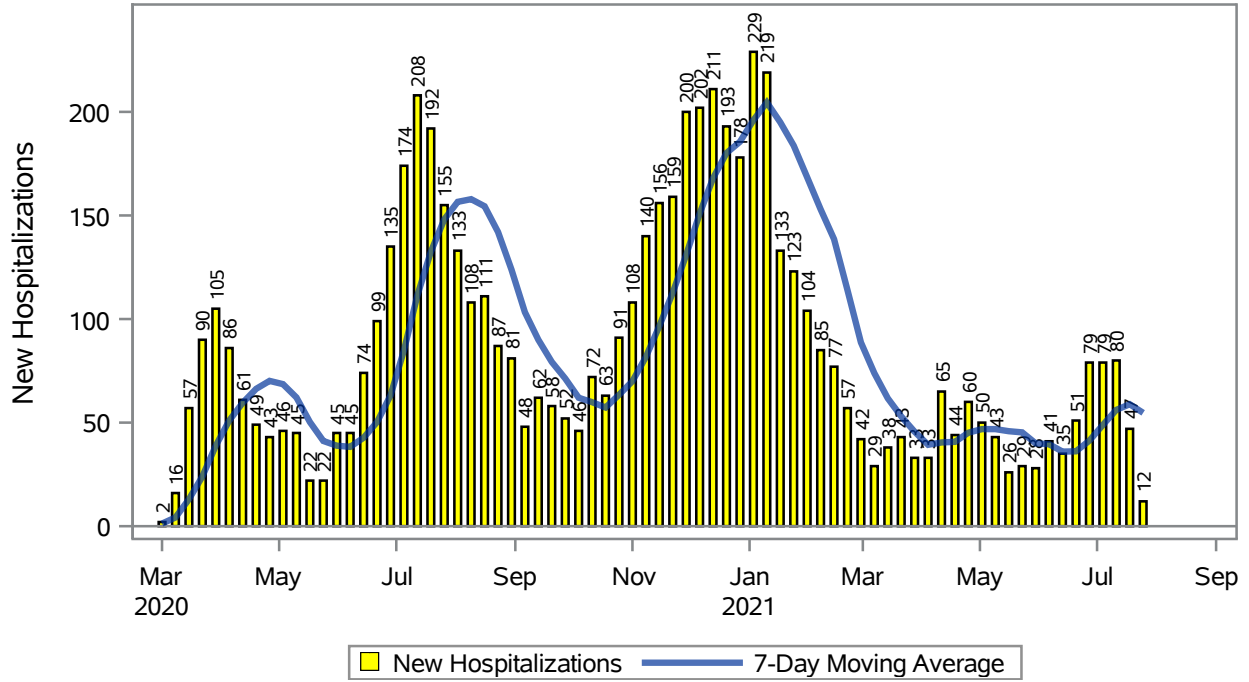
Note: Testing Data includes a 3 day delay

Investigations are ongoing; data are subject to change.

Reporting through 28JUL2021

Las Vegas zip codes include 89101, 89102, 89104, 89106, 89108, 89109, 89110, 89117, 89129, 89130, 89131, 89143, 89146, 89149, 89166, 89145, 89144, 89134, 89107, 89128, 89138.

COVID19 Hospitalizations for Las Vegas, 7-Day Moving Average



Investigations are ongoing; data are subject to change.

Reporting through 28JUL2021

Las Vegas zip codes include 89101, 89102, 89104, 89106, 89108, 89109, 89110, 89117, 89129, 89130, 89131, 89143, 89146, 89149, 89166, 89145, 89144, 89134, 89107, 89128, 89138.

Table 3: New COVID19-Related Hospitalizations and 7-Day Moving Average in Las Vegas, previous month

Week	Hospitalizations	7-Day Moving Average
04JUL2021	79	48.9
11JUL2021	80	56.1
18JUL2021	47	58.9
25JUL2021	12	54.7

Note1: Admission Date is calculated as follows based on completed information:
A) COVID19 Case is hospitalized B) COVID19 Case has a hospital admission date.

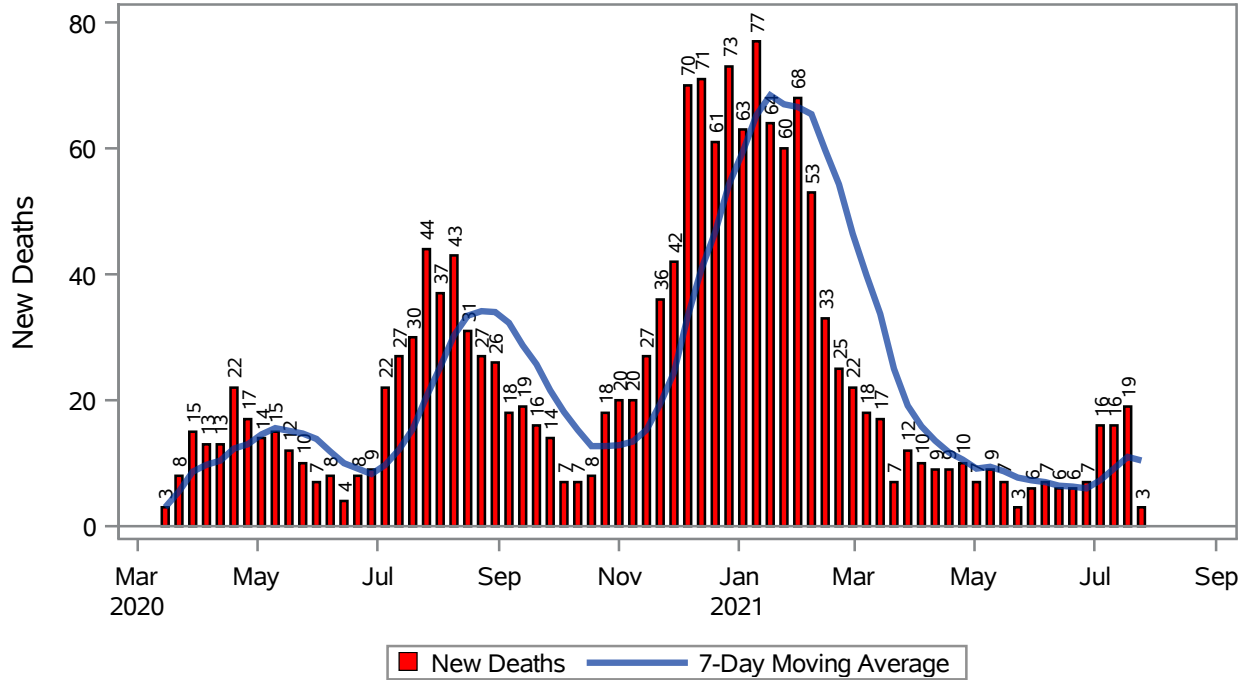
If admission date is missing, then the following is substituted temporarily, in order:
1) Disease onset date 2) Disease diagnosis date 3) Lab result collection date 4) Report date to SNHD.

Investigations are ongoing; data are subject to change.

Reporting through 28JUL2021

Las Vegas zip codes include 89101, 89102, 89104, 89106, 89108, 89109, 89110, 89117, 89129, 89130, 89131, 89143, 89146, 89149, 89166, 89145, 89144, 89134, 89107, 89128, 89138.

COVID19 Deaths for Las Vegas, 7-Day Moving Average



Investigations are ongoing; data are subject to change.

Reporting through 28JUL2021

Las Vegas zip codes include 89101, 89102, 89104, 89106, 89108, 89109, 89110, 89117, 89129, 89130, 89131, 89143, 89146, 89149, 89166, 89165, 89145, 89144, 89134, 89107, 89128, 89138.

Table 4: New COVID19-Related Deaths and 7-Day Moving Average in Las Vegas, Previous Month

Week	Deaths	7-Day Moving Average
04JUL2021	16	7.29
11JUL2021	16	9.14
18JUL2021	19	11.0
25JUL2021	3	10.4

Note1: Date of Death is calculated as follows based on completed information:
A) COVID19 Case is reported as deceased B) COVID19 Case has a reported date of death.

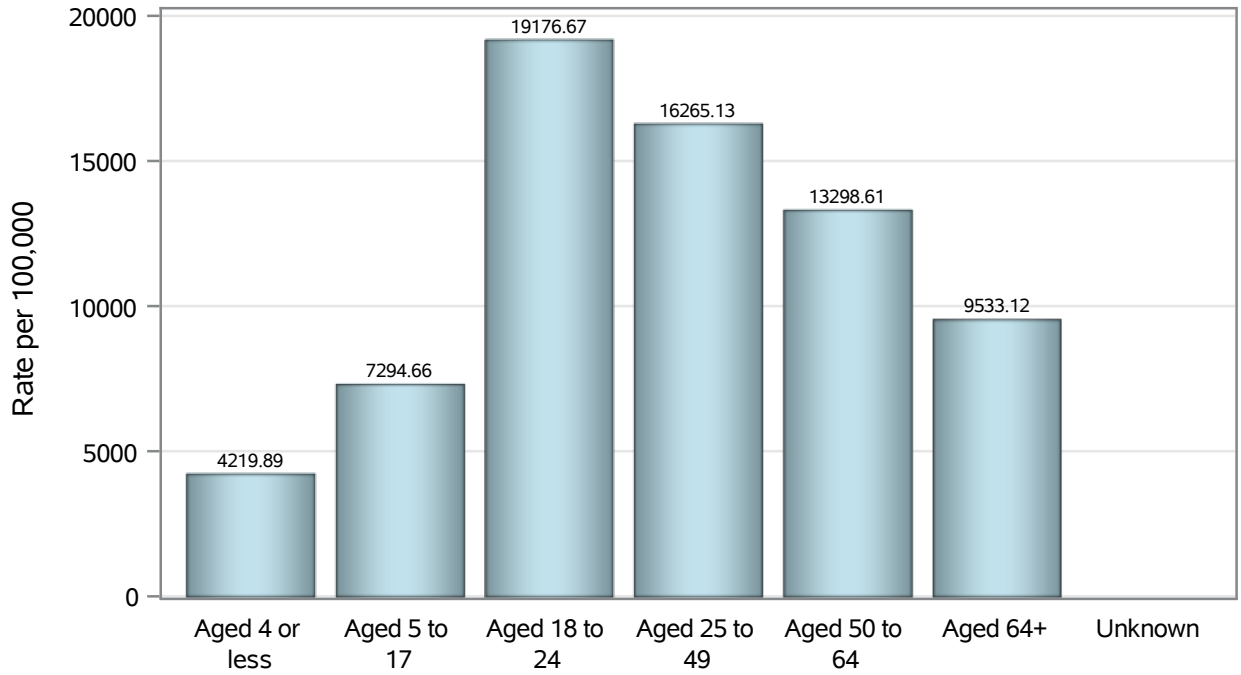
If date of death is missing, then the following is substituted temporarily, in order:
1) Disease onset date 2) Disease diagnosis date
3) Lab result collection date 4) Report date to SNHD.

Investigations are ongoing; data are subject to change.

Reporting through 28JUL2021

Las Vegas zip codes include 89101, 89102, 89104, 89106, 89108, 89109, 89110, 89117, 89129, 89130, 89131, 89143, 89146, 89149, 89166, 89145, 89144, 89134, 89107, 89128, 89138.

Case Age Rates in Las Vegas

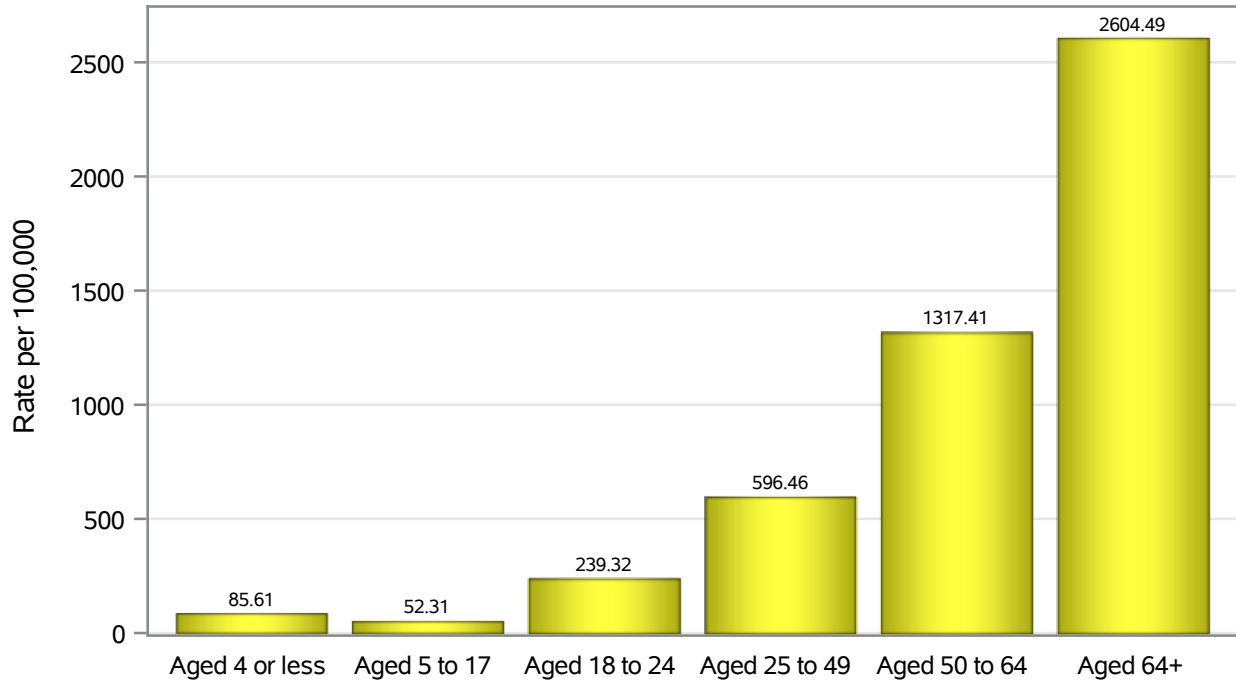


Investigations are ongoing; data are subject to change.

Reporting through 28JUL2021

Las Vegas zip codes include 89101, 89102, 89104, 89106, 89108, 89109, 89110, 89117, 89129, 89130, 89131, 89143, 89146, 89149, 89166, 89145, 89144, 89134, 89107, 89128, 89138.

Hospitalization Age Rates in Las Vegas

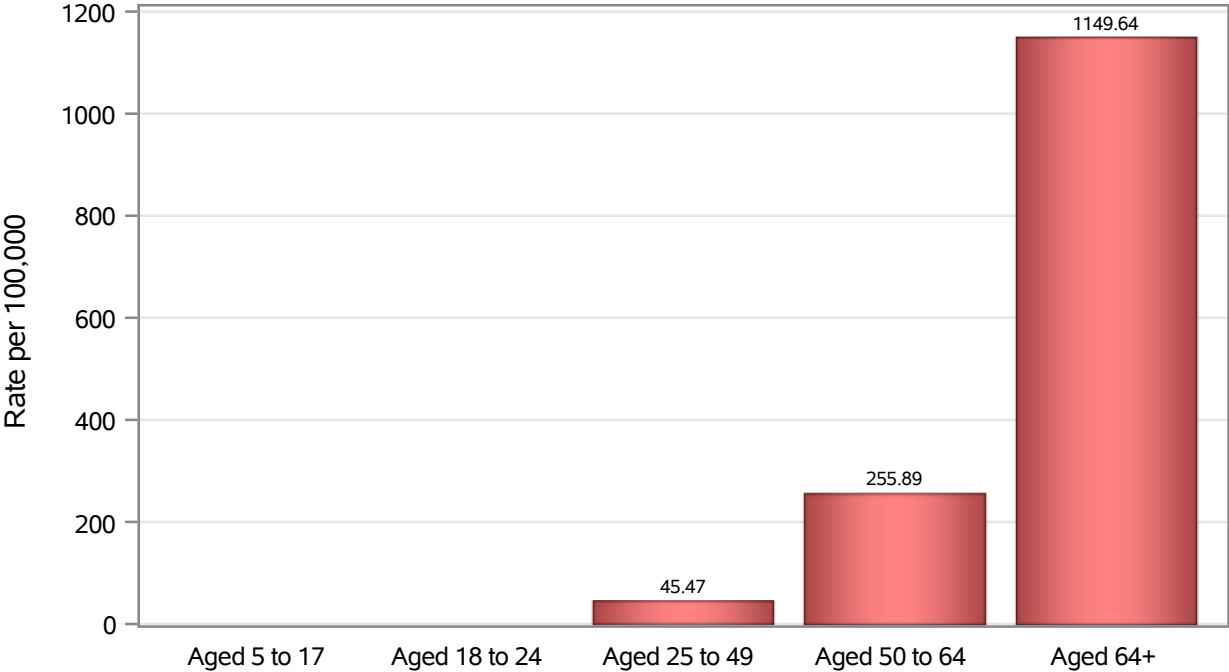


Investigations are ongoing; data are subject to change.

Reporting through 28JUL2021

Las Vegas zip codes include 89101, 89102, 89104, 89106, 89108, 89109, 89110, 89117, 89129, 89130, 89131, 89143, 89146, 89149, 89166, 89145, 89144, 89134, 89107, 89128, 89138.

Death Age Rates in Las Vegas



Investigations are ongoing; data are subject to change.

Reporting through 28JUL2021

Las Vegas zip codes include 89101, 89102, 89104, 89106, 89108, 89109, 89110, 89117, 89129, 89130, 89131, 89143, 89146, 89149, 89166, 89145, 89144, 89134, 89107, 89128, 89138.

Table 5: Age and COVID19 in Las Vegas

Case Status	Age Categories	N	%	Population	Rate per 100,000
Cases	Aged 4 or less	1873	2.1	44,385	4219.9
	Aged 5 to 17	9065	10.2	124269	7294.7
	Aged 18 to 24	11138	12.5	58,081	19177
	Aged 25 to 49	39704	44.5	244105	16265
	Aged 50 to 64	17514	19.6	131698	13299
	Aged 64+	9901	11.1	103859	9533.1
	Unknown	21	0.0	.	.
Hospitalizations	Aged 4 or less	38	0.6	44,385	85.61
	Aged 5 to 17	65	1.1	124269	52.31
	Aged 18 to 24	139	2.3	58,081	239.32
	Aged 25 to 49	1456	23.7	244105	596.46
	Aged 50 to 64	1735	28.3	131698	1317.4
	Aged 64+	2705	44.1	103859	2604.5
Deaths	Aged 5 to 17	2	0.1	124269	.
	Aged 18 to 24	6	0.4	58,081	.
	Aged 25 to 49	111	6.7	244105	45.47
	Aged 50 to 64	337	20.4	131698	255.89
	Aged 64+	1194	72.4	103859	1149.6

Note1: Population data source for calculating rate estimates: U.S. Census Bureau, ACS 5-year estimate.

Note2: Rates for categories with fewer than 12 cases are suppressed due to high relative standard error.

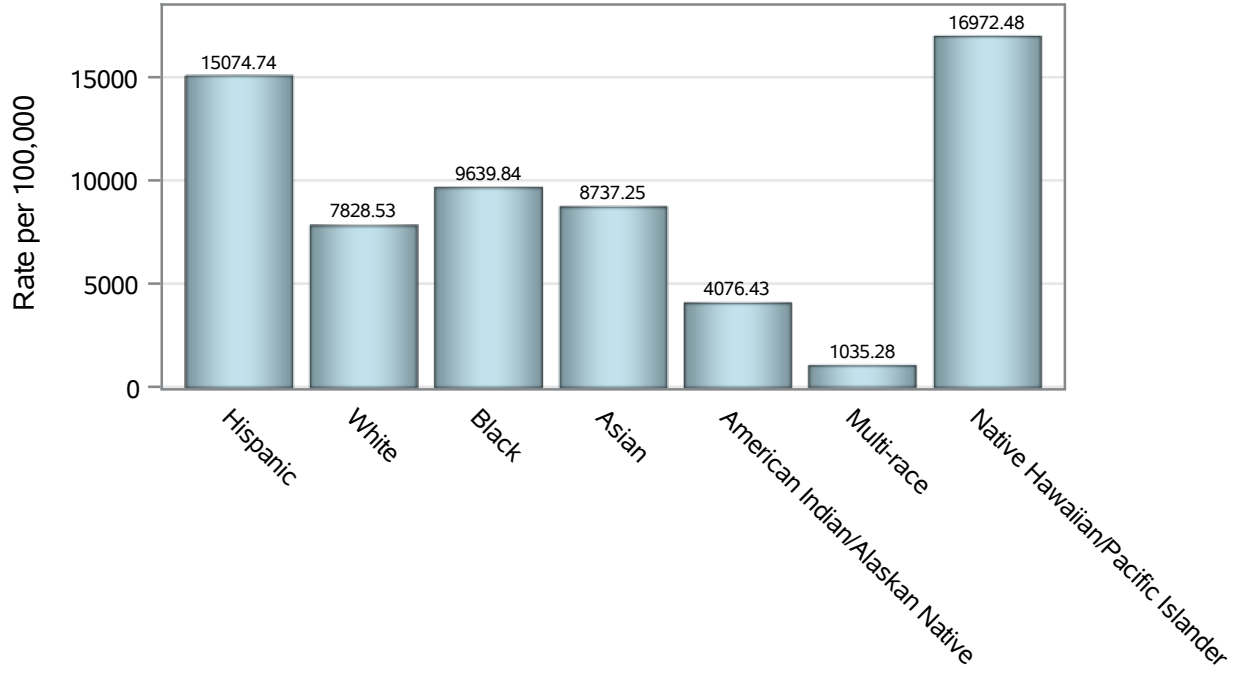
Note3: Hospitalizations are regardless of deceased status; Deaths are regardless of hospitalization status

Investigations are ongoing; data are subject to change.

Reporting through 28JUL2021

Las Vegas zip codes include 89101, 89102, 89104, 89106, 89108, 89109, 89110, 89117, 89129, 89130, 89131, 89143, 89146, 89149, 89166, 89145, 89144, 89134, 89107, 89128, 89138.

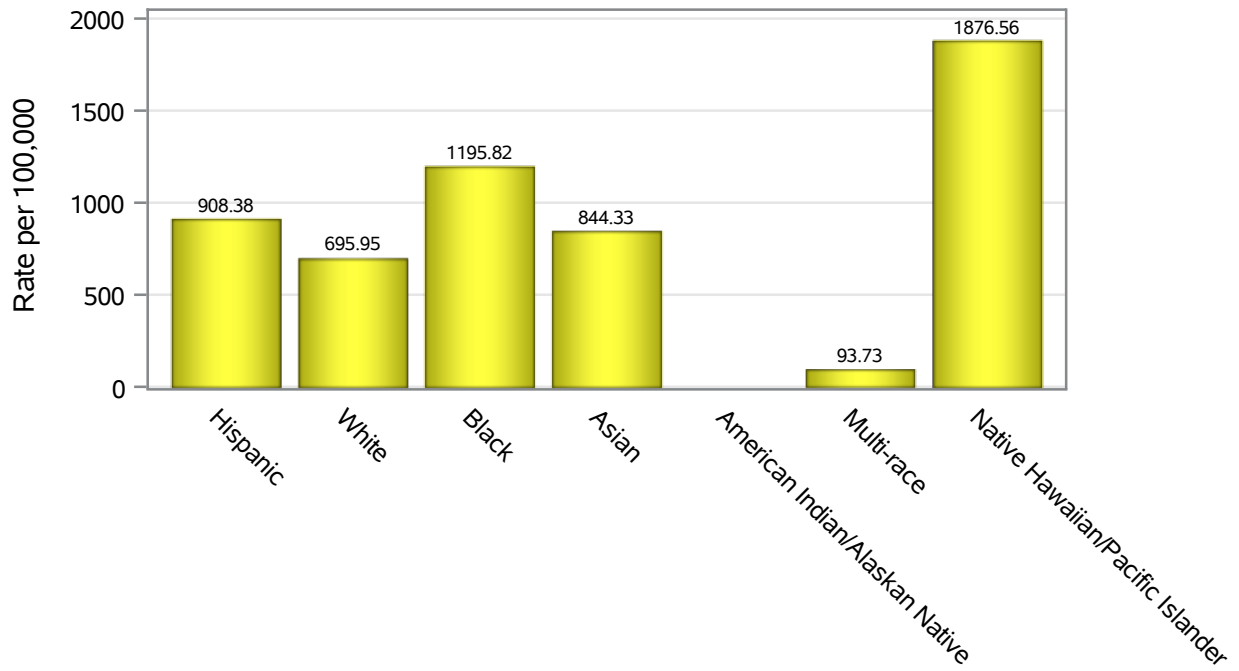
Case Race/Ethnicity Rates in Las Vegas



Investigations are ongoing; data are subject to change.
Reporting through 28JUL2021

Las Vegas zip codes include 89101, 89102, 89104, 89106, 89108, 89109, 89110, 89117, 89129, 89130, 89131, 89143, 89146, 89149, 89166, 89145, 89144, 89134, 89107, 89128, 89138.

Hospitalization Race/Ethnicity Rates in Las Vegas

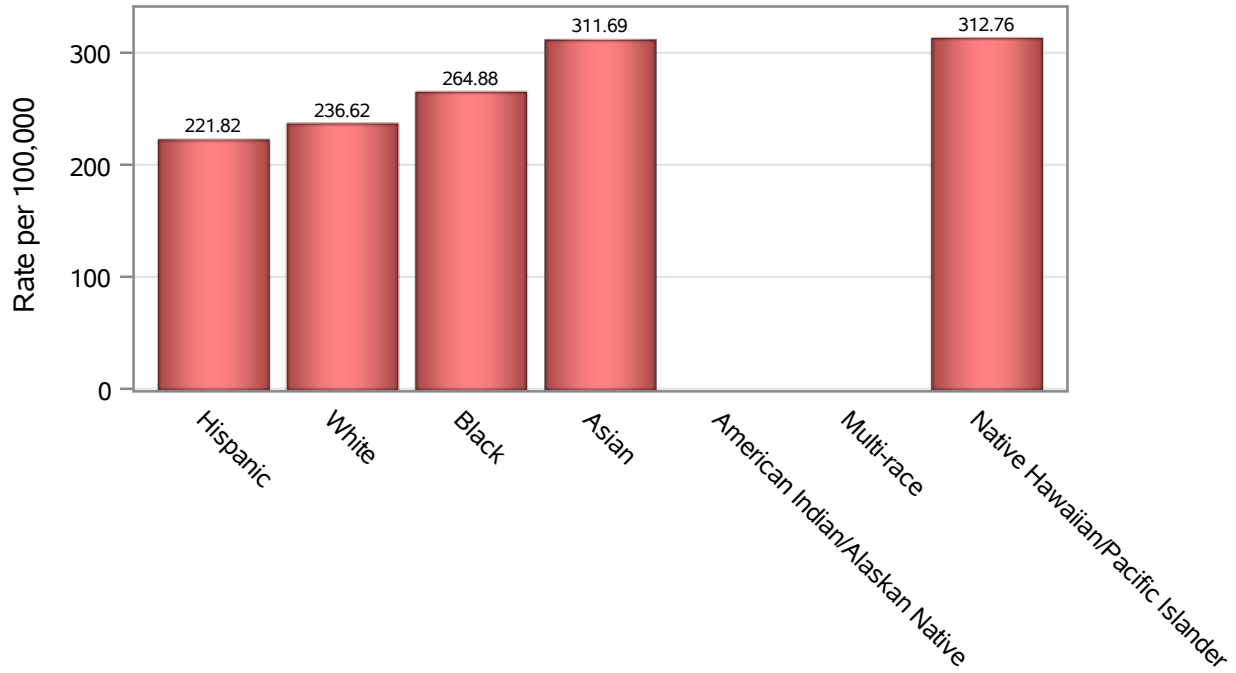


Investigations are ongoing; data are subject to change.

Reporting through 28JUL2021

Las Vegas zip codes include 89101, 89102, 89104, 89106, 89108, 89109, 89110, 89117, 89129, 89130, 89131, 89143, 89146, 89149, 89166, 89145, 89144, 89134, 89107, 89128, 89138.

Death Race/Ethnicity Rates in Las Vegas



Investigations are ongoing; data are subject to change.

Reporting through 28JUL2021

Las Vegas zip codes include 89101, 89102, 89104, 89106, 89108, 89109, 89110, 89117, 89129, 89130, 89131, 89143, 89146, 89149, 89166, 89145, 89144, 89134, 89107, 89128, 89138.

Table 6: Race/Ethnicity and COVID19 in Las Vegas

Case Status	Race Ethnicity Categories	N	%	Population	Rate per 100,000
Cases	Hispanic	34319	38.5	227659	15075
	White	24747	27.7	316113	7828.5
	Black	7497	8.4	77,771	9639.8
	Asian	4429	5.0	50,691	8737.3
	American Indian/Alaskan Native	128	0.1	3,140	4076.4
	Multi-race	243	0.3	23,472	1035.3
	Native Hawaiian/Pacific Islander	814	0.9	4,796	16972
	Unknown	17039	19.1	.	.
Hospitalizations	Hispanic	2068	33.7	227659	908.38
	White	2200	35.8	316113	695.95
	Black	930	15.2	77,771	1195.8
	Asian	428	7.0	50,691	844.33
	American Indian/Alaskan Native	11	0.2	3,140	.
	Multi-race	22	0.4	23,472	93.73
	Native Hawaiian/Pacific Islander	90	1.5	4,796	1876.6
	Unknown	389	6.3	.	.
Deaths	Hispanic	505	30.6	227659	221.82
	White	748	45.3	316113	236.62
	Black	206	12.5	77,771	264.88
	Asian	158	9.6	50,691	311.69
	American Indian/Alaskan Native	1	0.1	3,140	.
	Multi-race	6	0.4	23,472	.
	Native Hawaiian/Pacific Islander	15	0.9	4,796	312.76
	Unknown	11	0.7	.	.

Note1: Population data source for calculating rate estimates: U.S. Census Bureau, ACS 5-year estimate.

Note2: Rates for categories with fewer than 12 cases are suppressed due to high relative standard error.

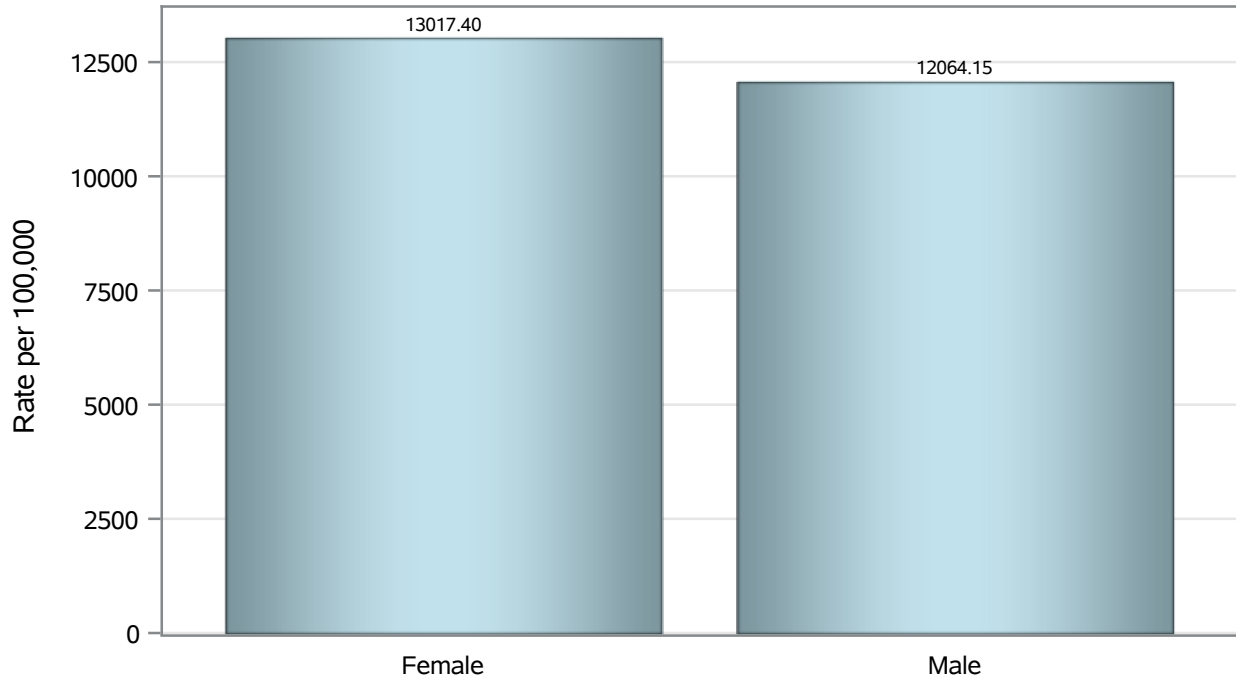
Note3: Hospitalizations are regardless of deceased status; Deaths are regardless of hospitalization status

Investigations are ongoing; data are subject to change.

Reporting through 28JUL2021

Las Vegas zip codes include 89101, 89102, 89104, 89106, 89108, 89109, 89110, 89117, 89129, 89130, 89131, 89143, 89146, 89149, 89166, 89145, 89144, 89134, 89107, 89128, 89138.

Case Birth Sex Rates in Las Vegas

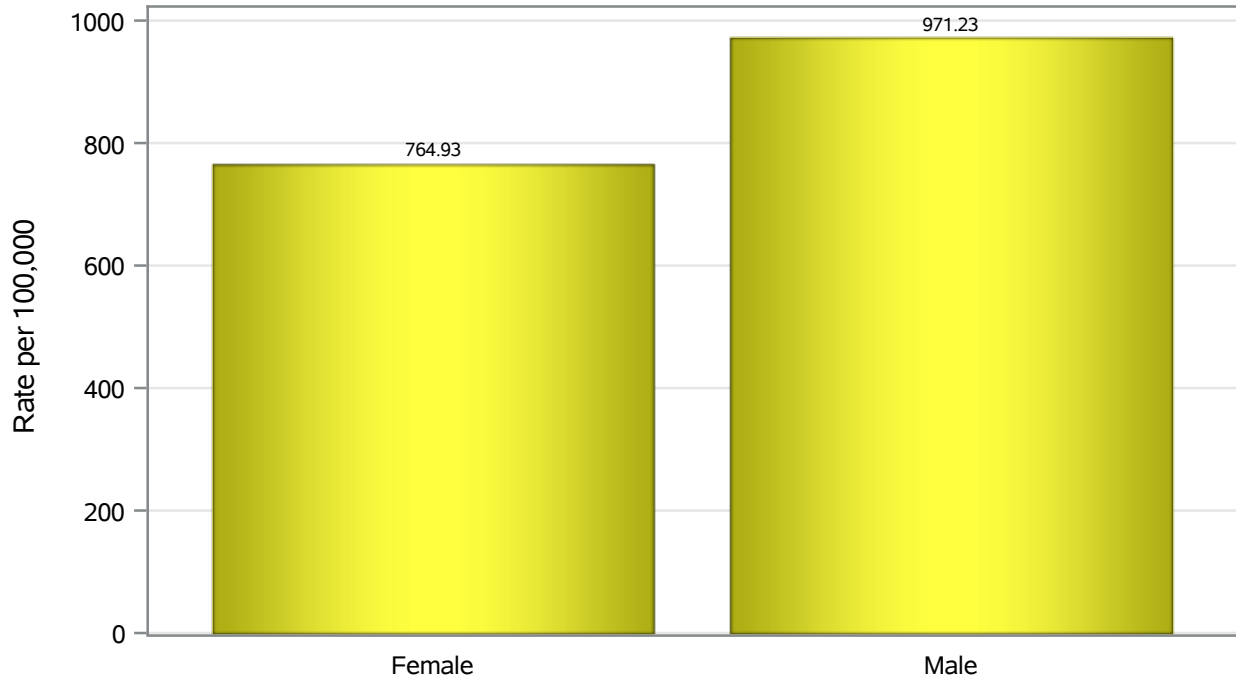


Investigations are ongoing; data are subject to change.

Reporting through 28JUL2021

Las Vegas zip codes include 89101, 89102, 89104, 89106, 89108, 89109, 89110, 89117, 89129, 89130, 89131, 89143, 89146, 89149, 89166, 89145, 89144, 89134, 89107, 89128, 89138.

Hospitalization Birth Sex Rates in Las Vegas

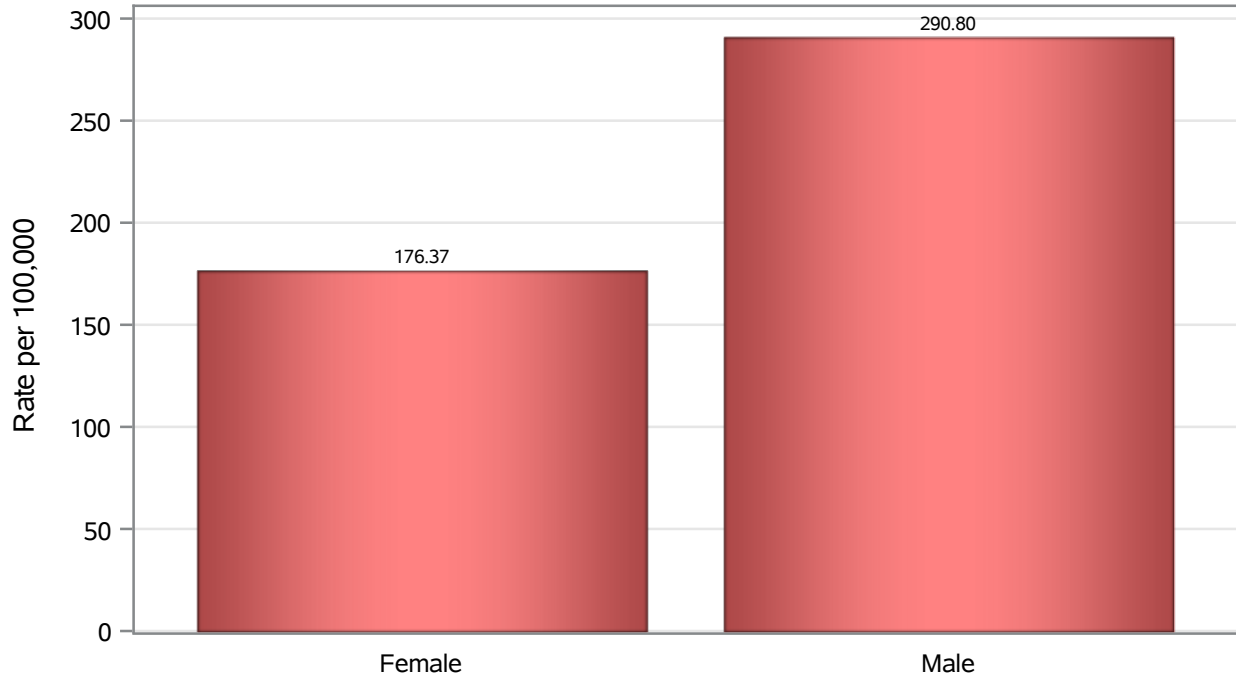


Investigations are ongoing; data are subject to change.

Reporting through 28JUL2021

Las Vegas zip codes include 89101, 89102, 89104, 89106, 89108, 89109, 89110, 89117, 89129, 89130, 89131, 89143, 89146, 89149, 89166, 89145, 89144, 89134, 89107, 89128, 89138.

Death Birth Sex Rates in Las Vegas



Investigations are ongoing; data are subject to change.

Reporting through 28JUL2021

Las Vegas zip codes include 89101, 89102, 89104, 89106, 89108, 89109, 89110, 89117, 89129, 89130, 89131, 89143, 89146, 89149, 89166, 89145, 89144, 89134, 89107, 89128, 89138.

Table 7: Birth Sex and COVID19 in Las Vegas

Case Status	Birth Sex Categories	N	%	Population	Rate per 100,000
Cases	Female	45982	51.5	353235	13017
	Male	42606	47.8	353162	12064
	Unknown	628	0.7	.	.
Hospitalizations	Female	2702	44.0	353235	764.93
	Male	3430	55.9	353162	971.23
	Unknown	6	0.1	.	.
Deaths	Female	623	37.8	353235	176.37
	Male	1027	62.2	353162	290.80

Note1: Population data source for calculating rate estimates: U.S. Census Bureau, ACS 5-year estimate.

Note2: Rates for categories with fewer than 12 cases are suppressed due to high relative standard error.

Note3: Hospitalizations are regardless of deceased status; Deaths are regardless of hospitalization status

Investigations are ongoing; data are subject to change.

Reporting through 28JUL2021

Las Vegas zip codes include 89101, 89102, 89104, 89106, 89108, 89109, 89110, 89117, 89129, 89130, 89131, 89143, 89146, 89149, 89166, 89145, 89144, 89134, 89107, 89128, 89138.