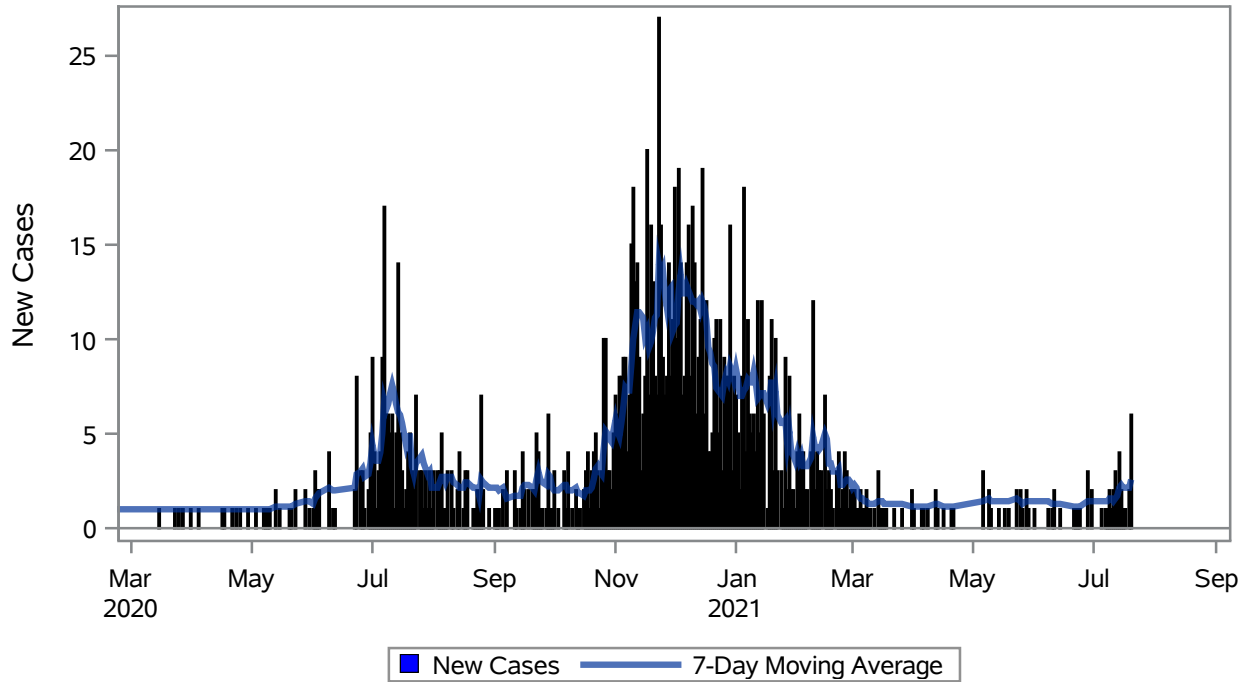


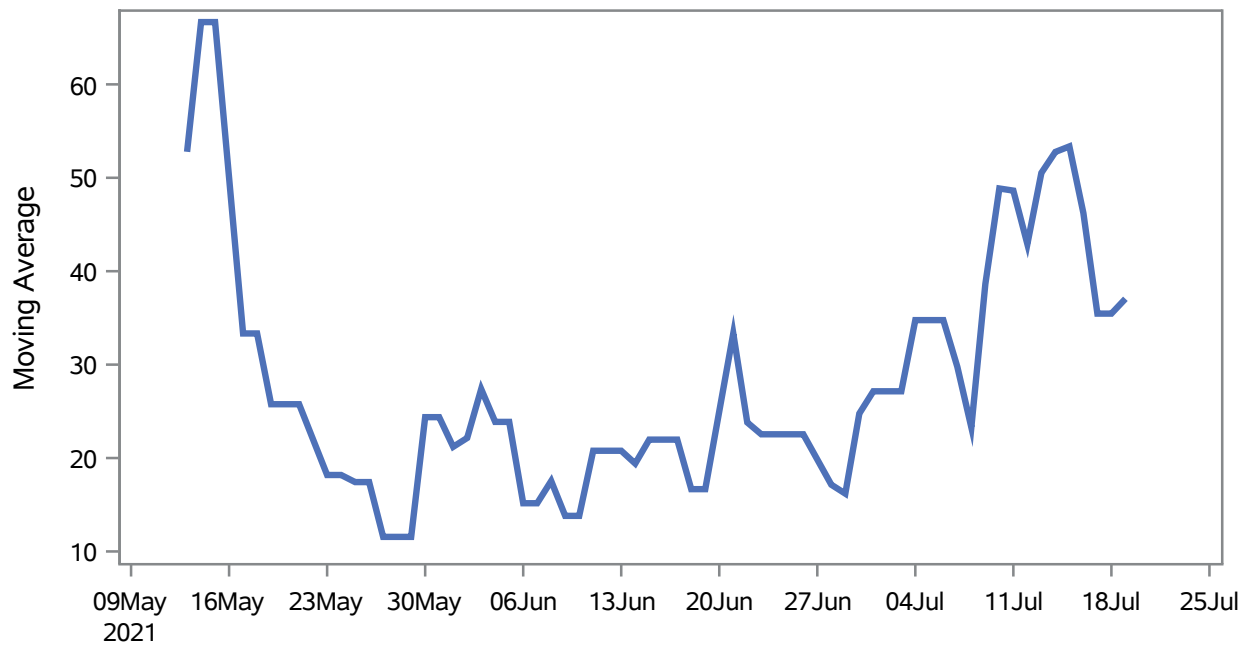
COVID19 Cases for Mesquite, 7-Day Moving Average



Investigations are ongoing; data are subject to change.
Reporting through 21JUL2021

Mesquite zip codes include 89027,89034. The U.S. Census Bureau data uses Zip Code Tabulation Area (ZCTA), which does not list 89034 but has incorporated areas of 89034 within 89027 through the American Community Survey (ACS) 5-Year Estimates.

Percent of People Receiving COVID-19 Viral Tests Who Have Positive Results in Mesquite



Investigations are ongoing; data are subject to change.

Reporting through 21JUL2021

Mesquite zip codes include 89027,89034. The U.S. Census Bureau data uses Zip Code Tabulation Area (ZCTA), which does not list 89034 but has incorporated areas of 89034 within 89027 through the American Community Survey (ACS) 5-Year Estimates.

Table 1: Age and COVID19 in Mesquite

Case Status	Age Categories	N	%	Population	Rate per 100,000
Cases	Aged 4 or less	13	1.0	702	1851.9
	Aged 5 to 17	69	5.1	2,217	3112.3
	Aged 18 to 24	136	10.1	938	14499
	Aged 25 to 49	393	29.3	3,386	11607
	Aged 50 to 64	288	21.4	3,371	8543.5
	Aged 64+	444	33.1	7,290	6090.5
Hospitalizations	Aged 4 or less	1	1.2	702	--
	Aged 5 to 17	1	1.2	2,217	--
	Aged 25 to 49	8	9.8	3,386	--
	Aged 50 to 64	14	17.1	3,371	415.31
	Aged 64+	58	70.7	7,290	795.61
Deaths	Aged 50 to 64	1	3.6	3,371	--
	Aged 64+	27	96.4	7,290	370.37

Note1: Population data source for calculating rate estimates: U.S. Census Bureau, ACS 5-year estimate.

Note2: Rates for categories with fewer than 12 cases are suppressed due to high relative standard error.

Note3: Hospitalizations are regardless of deceased status; Deaths are regardless of hospitalization status

**Investigations are ongoing; data are subject to change.
Reporting through 21JUL2021**

Mesquite zip codes include 89027,89034. The U.S. Census Bureau data uses Zip Code Tabulation Area (ZCTA), which does not list 89034 but has incorporated areas of 89034 within 89027 through the American Community Survey (ACS) 5-Year Estimates.

Table 2: Race/Ethnicity and COVID19 in Mesquite

Case Status	Race Ethnicity Categories	N	%	Population	Rate per 100,000
Cases	Hispanic	430	32.0	3,738	11503
	White	658	49.0	13,120	5015.2
	Black	--	--	148	--
	Asian	--	--	486	4526.7
	American Indian/Alaskan Native	--	--	95	--
	Multi-race	--	--	240	--
	Native Hawaiian/Pacific Islander	--	--	30	--
	Unknown	213	15.9	.	.
Hospitalizations	Hispanic	19	23.2	3,738	508.29
	White	51	62.2	13,120	388.72
	Black	--	--	148	--
	Asian	--	--	486	--
	American Indian/Alaskan Native	--	--	95	--
	Multi-race	--	--	240	--
	Native Hawaiian/Pacific Islander	--	--	30	--
	Unknown	--	--	.	.
Deaths	Hispanic	2	7.1	3,738	--
	White	25	89.3	13,120	190.55
	Asian	--	--	486	--

Note1: Population data source for calculating rate estimates: U.S. Census Bureau, ACS 5-year estimate.

Note2: Rates for categories with fewer than 12 cases are suppressed due to high relative standard error. Counts for categories with population less than 500 are suppressed for confidentiality.

Note3: Due to suppression, the total counts per case status may not equal expected totals.

Note4: Hospitalizations are regardless of deceased status; Deaths are regardless of hospitalization status

**Investigations are ongoing; data are subject to change.
Reporting through 21JUL2021**

Mesquite zip codes include 89027,89034. The U.S. Census Bureau data uses Zip Code Tabulation Area (ZCTA), which does not list 89034 but has incorporated areas of 89034 within 89027 through the American Community Survey (ACS) 5-Year Estimates.

Table 3: Birth Sex and COVID19 in Mesquite

Case Status	Birth Sex Categories	N	%	Population	Rate per 100,000
Cases	Female	733	54.6	9,111	8045.2
	Male	601	44.8	8,793	6835.0
	Unknown	9	0.7	.	.
Hospitalizations	Female	38	46.3	9,111	417.08
	Male	44	53.7	8,793	500.40
Deaths	Female	9	32.1	9,111	--
	Male	19	67.9	8,793	216.08

Note1: Population data source for calculating rate estimates: U.S. Census Bureau, ACS 5-year estimate.

Note2: Rates for categories with fewer than 12 cases are suppressed due to high relative standard error. Counts for categories with population less than 500 are suppressed for confidentiality.

Note3: Hospitalizations are regardless of deceased status; Deaths are regardless of hospitalization status

**Investigations are ongoing; data are subject to change.
Reporting through 21JUL2021**

Mesquite zip codes include 89027,89034. The U.S. Census Bureau data uses Zip Code Tabulation Area (ZCTA), which does not list 89034 but has incorporated areas of 89034 within 89027 through the American Community Survey (ACS) 5-Year Estimates.