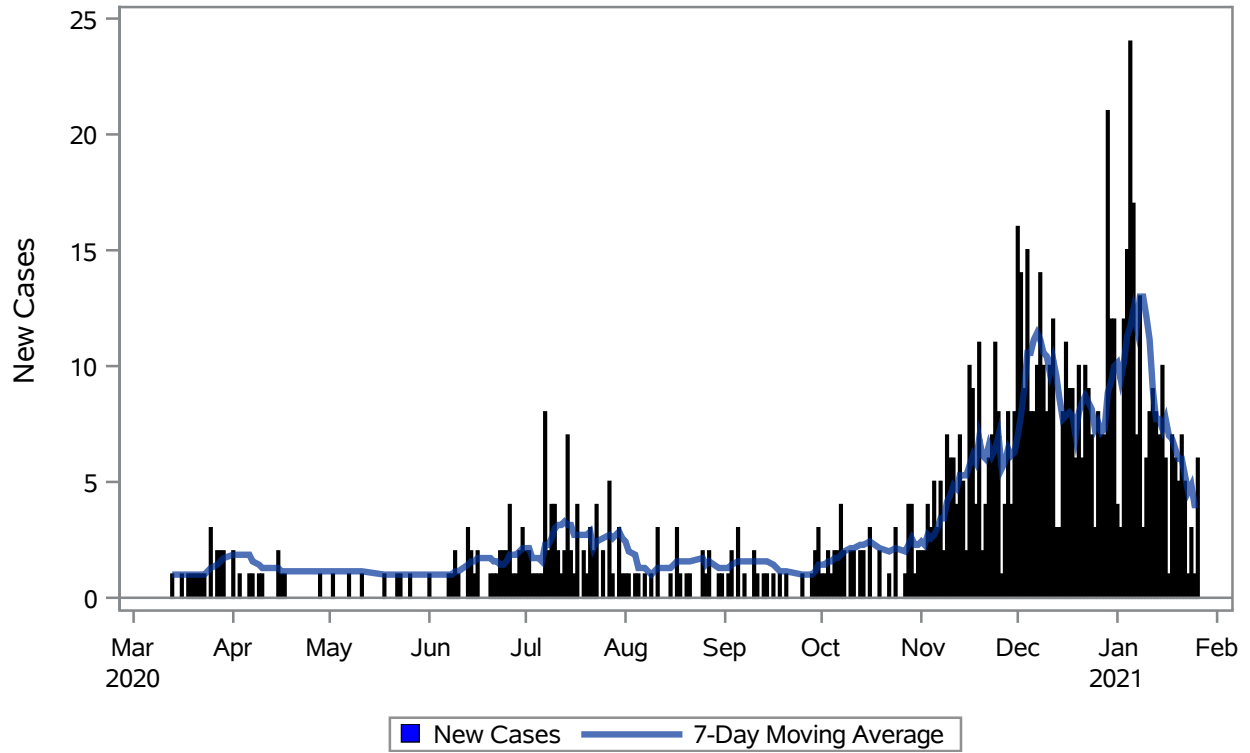
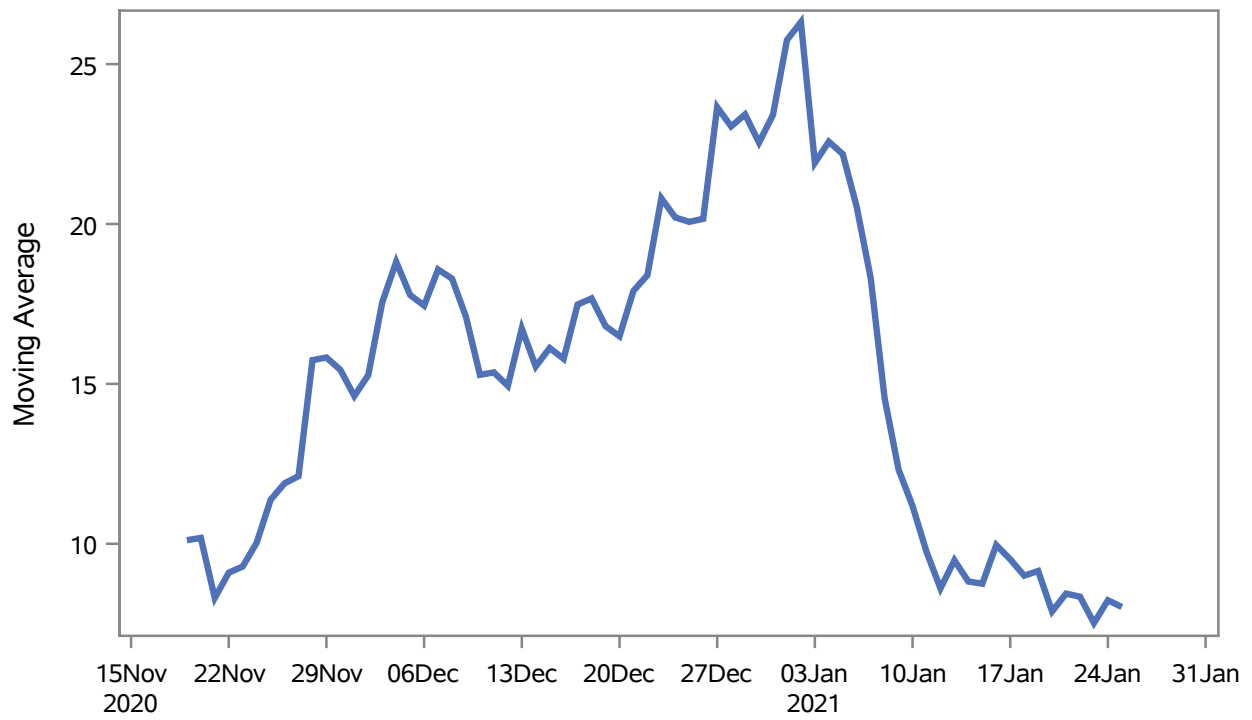


COVID19 Cases for Boulder City, 7-Day Moving Average



Investigations are ongoing; data are subject to change.
Reporting through 27JAN2021
Boulder City zip codes include 89005.

Percent of People Receiving COVID-19 Viral Tests Who Have Positive Results in Boulder City



Investigations are ongoing; data are subject to change.

Reporting through 27JAN2021

Boulder City zip codes include 89005.

Table 1: Age and COVID19 in Boulder City

Case Status	Age Categories	N	%	Population	Rate per 100,000
Cases	Aged 4 or less	9	1.0	659	--
	Aged 5 to 17	57	6.6	2,123	2684.9
	Aged 18 to 24	71	8.3	921	7709.0
	Aged 25 to 49	299	34.8	3,509	8520.9
	Aged 50 to 64	209	24.3	3,701	5647.1
	Aged 64+	215	25.0	4,767	4510.2
Hospitalizations	Aged 25 to 49	2	3.8	3,509	--
	Aged 50 to 64	17	32.7	3,701	459.34
	Aged 64+	33	63.5	4,767	692.26
Deaths	Aged 50 to 64	7	17.1	3,701	--
	Aged 64+	34	82.9	4,767	713.24

Note1: Population data source for calculating rate estimates: U.S. Census Bureau, ACS 5-year estimate.

Note2: Rates for categories with fewer than 12 cases are suppressed due to high relative standard error.

Note3: Hospitalizations are regardless of deceased status; Deaths are regardless of hospitalization status

**Investigations are ongoing; data are subject to change.
Reporting through 27JAN2021
Boulder City zip codes include 89005.**

Table 2: Race/Ethnicity and COVID19 in Boulder City

Case Status	Race Ethnicity Categories	N	%	Population	Rate per 100,000
Cases	Hispanic	50	5.8	1,164	4295.5
	White	566	65.8	13,569	4171.3
	Black	--	--	51	--
	Asian	--	--	199	--
	American Indian/Alaskan Native	--	--	140	--
	Native Hawaiian/Pacific Islander	--	--	32	--
	Unknown	226	26.3	.	.
Hospitalizations	Hispanic	3	5.8	1,164	--
	White	43	82.7	13,569	316.90
	Unknown	6	11.5	.	.
Deaths	White	39	95.1	13,569	287.42
	Unknown	2	4.9	.	.

Note1: Population data source for calculating rate estimates: U.S. Census Bureau, ACS 5-year estimate.

Note2: Rates for categories with fewer than 12 cases are suppressed due to high relative standard error. Counts for categories with population less than 500 are suppressed for confidentiality.

Note3: Due to suppression, the total counts per case status may not equal expected totals.

Note4: Hospitalizations are regardless of deceased status; Deaths are regardless of hospitalization status

**Investigations are ongoing; data are subject to change.
Reporting through 27JAN2021
Boulder City zip codes include 89005.**