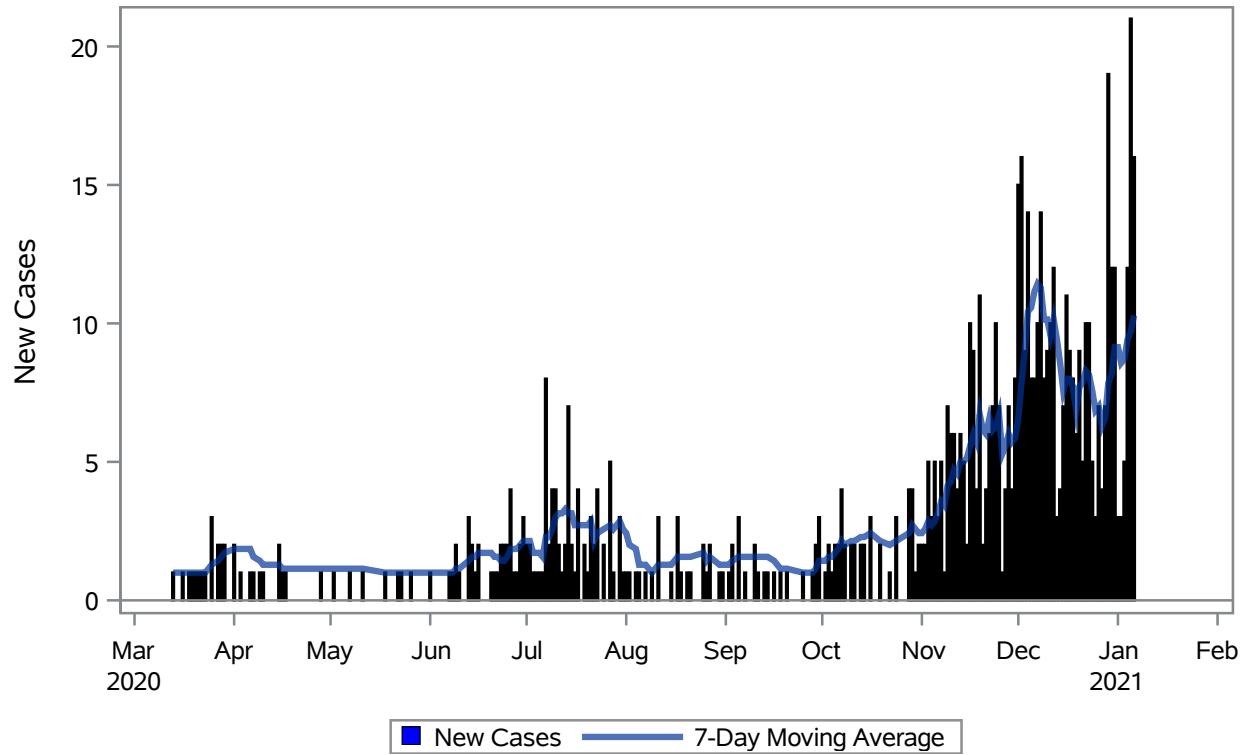
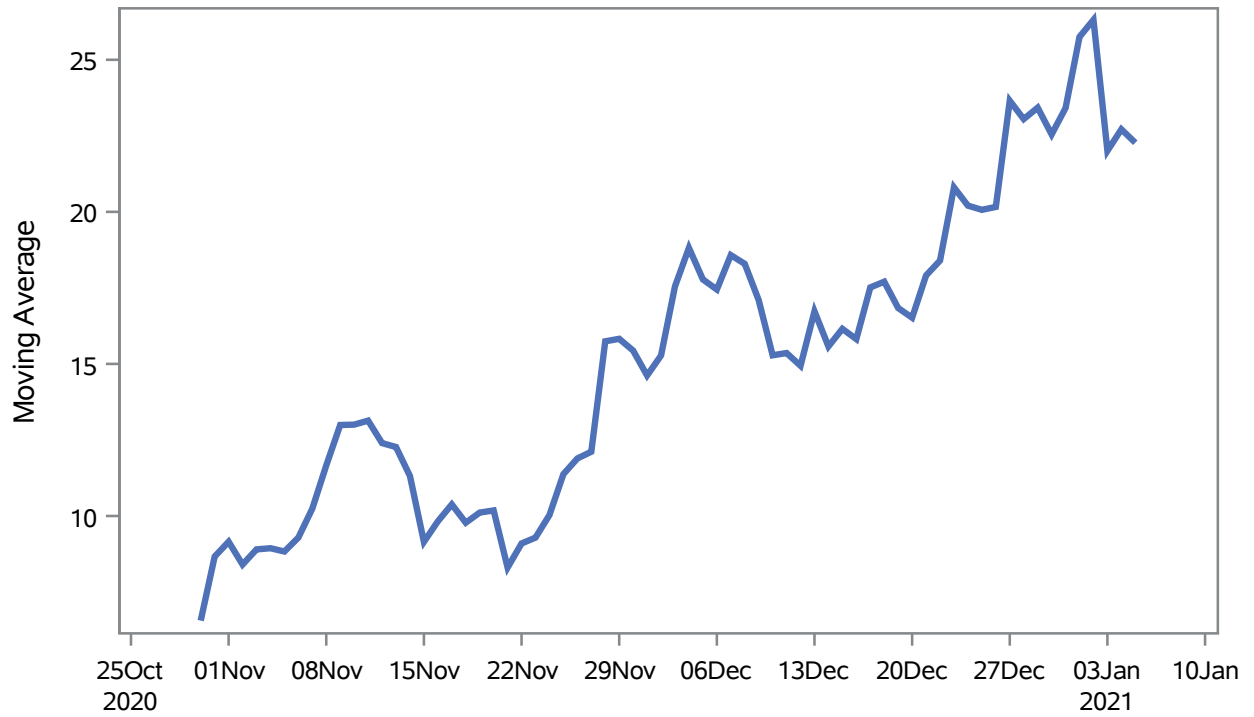


COVID19 Cases for Boulder City, 7-Day Moving Average



Investigations are ongoing; data are subject to change.
Reporting through 07JAN2021
Boulder City zip codes include 89005.

Percent of People Receiving COVID-19 Viral Tests Who Have Positive Results in Boulder City



Investigations are ongoing; data are subject to change.

Reporting through 07JAN2021

Boulder City zip codes include 89005.

Table 1: Age and COVID19 in Boulder City

Case Status	Age Categories	N	%	Population	Rate per 100,000
Cases	Aged 4 or less	7	1.0	659	--
	Aged 5 to 17	45	6.3	2,123	2119.6
	Aged 18 to 24	63	8.9	921	6840.4
	Aged 25 to 49	248	34.9	3,509	7067.5
	Aged 50 to 64	173	24.3	3,701	4674.4
	Aged 64+	175	24.6	4,767	3671.1
Hospitalizations	Aged 25 to 49	1	2.2	3,509	--
	Aged 50 to 64	13	28.9	3,701	351.26
	Aged 64+	31	68.9	4,767	650.30
Deaths	Aged 50 to 64	4	16.7	3,701	--
	Aged 64+	20	83.3	4,767	419.55

Note1: Population data source for calculating rate estimates: U.S. Census Bureau, ACS 5-year estimate.

Note2: Rates for categories with fewer than 12 cases are suppressed due to high relative standard error.

Note3: Hospitalizations are regardless of deceased status; Deaths are regardless of hospitalization status

**Investigations are ongoing; data are subject to change.
Reporting through 07JAN2021
Boulder City zip codes include 89005.**

Table 2: Race/Ethnicity and COVID19 in Boulder City

Case Status	Race Ethnicity Categories	N	%	Population	Rate per 100,000
Cases	Hispanic	40	5.6	1,164	3436.4
	White	471	66.2	13,569	3471.1
	Black	--	--	51	--
	Asian	--	--	199	--
	American Indian/Alaskan Native	--	--	140	--
	Native Hawaiian/Pacific Islander	--	--	32	--
	Unknown	185	26.0	.	.
Hospitalizations	Hispanic	2	4.4	1,164	--
	White	37	82.2	13,569	272.68
	Unknown	6	13.3	.	.
Deaths	White	24	100	13,569	176.87

Note1: Population data source for calculating rate estimates: U.S. Census Bureau, ACS 5-year estimate.

Note2: Rates for categories with fewer than 12 cases are suppressed due to high relative standard error. Counts for categories with population less than 500 are suppressed for confidentiality.

Note3: Due to suppression, the total counts per case status may not equal expected totals.

Note4: Hospitalizations are regardless of deceased status; Deaths are regardless of hospitalization status

**Investigations are ongoing; data are subject to change.
Reporting through 07JAN2021
Boulder City zip codes include 89005.**