

COVID-19 Trends

Clark County, Nevada

Document creation date: January 2, 2021

- **General notes:** This report uses surveillance data collected by the Southern Nevada Health District. Due to delays related to laboratory processing, reporting, and case investigations, data from the most recent days are less complete than data from older time points. For this reason, as of June 10, 2020 this report will not display data from the previous three days prior to the date that the report was created. As many case investigations are ongoing, all data presented in this report are considered preliminary and subject to change. Data regarding cases, hospitalizations, deaths, and labs were last updated January 2, 2021 at 12:00 AM, and data is reported up through December 29, 2020.
- **Cases:** Symptom onset date was used for aggregating cases. If symptom onset date was missing, the following dates were substituted in this order: diagnosis date, lab collection date, report date (date case was reported to SNHD), event creation date (date case was entered into TriSano, SNHD's surveillance system).
- **Hospitalizations:** Admission date was used for aggregating hospitalizations. If admission date was missing, report date was substituted. If a person had more than one hospitalization after his/her COVID-19 diagnosis, only the first admission date was used.
- **Deaths:** Date of death was used for aggregating deaths. If date of death was missing, report date was used.
- For the "7-Day Average of Daily New Cases per 100K, by Age Group (Years)" graph and table, the population data source for calculating rate estimates was from Nevada State Demographer "2019 ASRHO Estimates and Projections Summary 2000 to 2038", 2020 projection, vintage 2019. Rates for individual age categories may be based on small numbers, which may give unstable estimates.
- All graphs in this report show data from approximately 60 days prior to the date of the report.
- All tables show data from the last 14 days before the current date, with the exception of the "Percent Change in Weekly Totals from Previous Week", which displays data from the previous eight completed weeks.
- For the "Percent of People Receiving COVID-19 Viral Tests Who Have Positive Results" graph, one person who has multiple specimens collected in one day is only reported once. If any of that person's tests are positive, that person counts as a positive result. If all of that individual's tests are negative, that person counts as a negative result. Laboratory tests were included if they were a test assessing for the presence of SARS-CoV-2 viral RNA, for example PCR tests. Antibody tests were excluded.

COVID-19 Cases

Clark County, NV

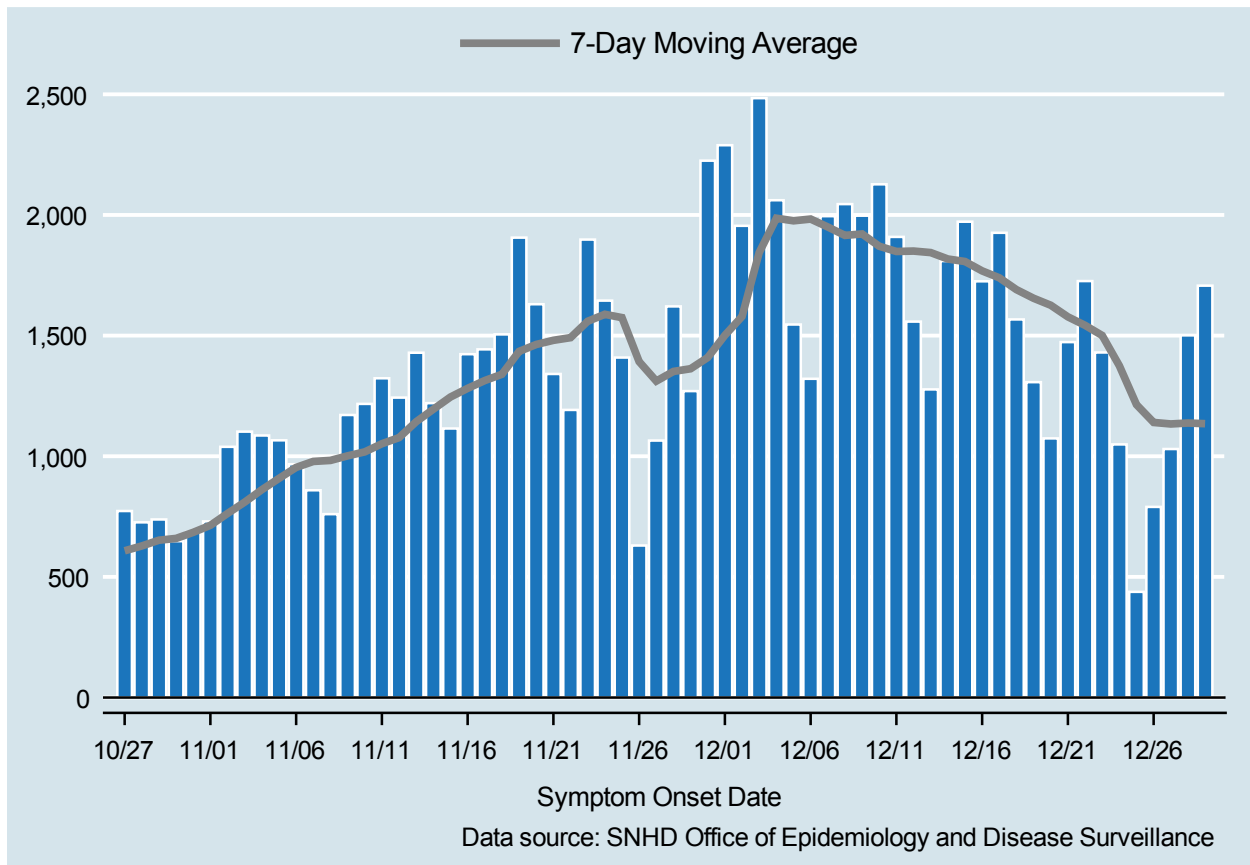


Table 1: COVID-19 Cases per Day, Clark County, NV

Date	Cases Per Day	7-Day Moving Average
DEC 16	1,725	1,768.1
DEC 17	1,926	1,739.4
DEC 18	1,567	1,690.6
DEC 19	1,307	1,654.7
DEC 20	1,074	1,625.7
DEC 21	1,473	1,577.7
DEC 22	1,726	1,542.6
DEC 23	1,430	1,500.4
DEC 24	1,049	1,375.1
DEC 25	438	1,213.9
DEC 26	790	1,140.0
DEC 27	1,030	1,133.7
DEC 28	1,501	1,137.7
DEC 29	1,707	1,135.0

COVID-19 Hospitalizations

Clark County, NV

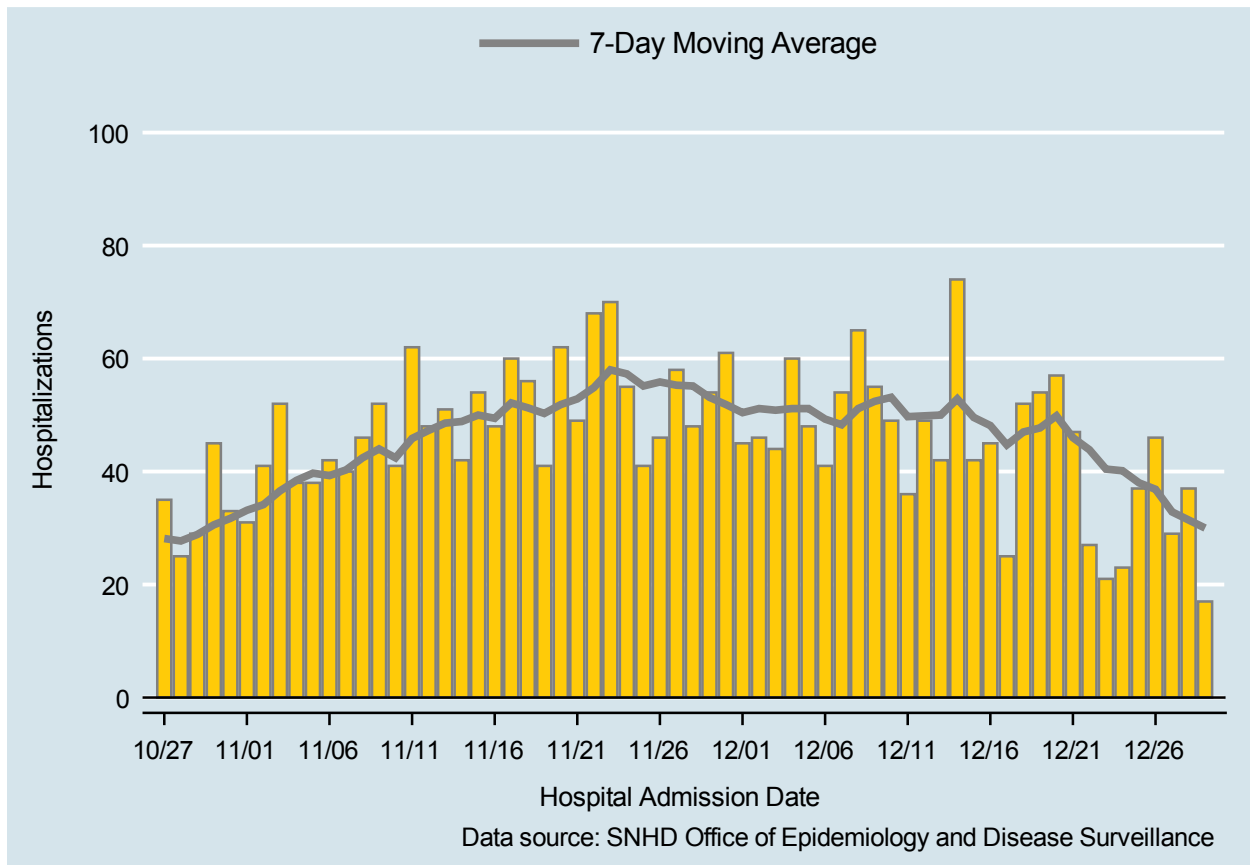


Table 2: COVID-19 Hospitalizations per Day, Clark County, NV

Date	Hospitalizations Per Day	7-Day Moving Average
DEC 16	45	48.1
DEC 17	25	44.7
DEC 18	52	47.0
DEC 19	54	47.7
DEC 20	57	49.9
DEC 21	47	46.0
DEC 22	27	43.9
DEC 23	21	40.4
DEC 24	23	40.1
DEC 25	37	38.0
DEC 26	46	36.9
DEC 27	29	32.9
DEC 28	37	31.4
DEC 29	17	30.0

COVID-19 Deaths

Clark County, NV

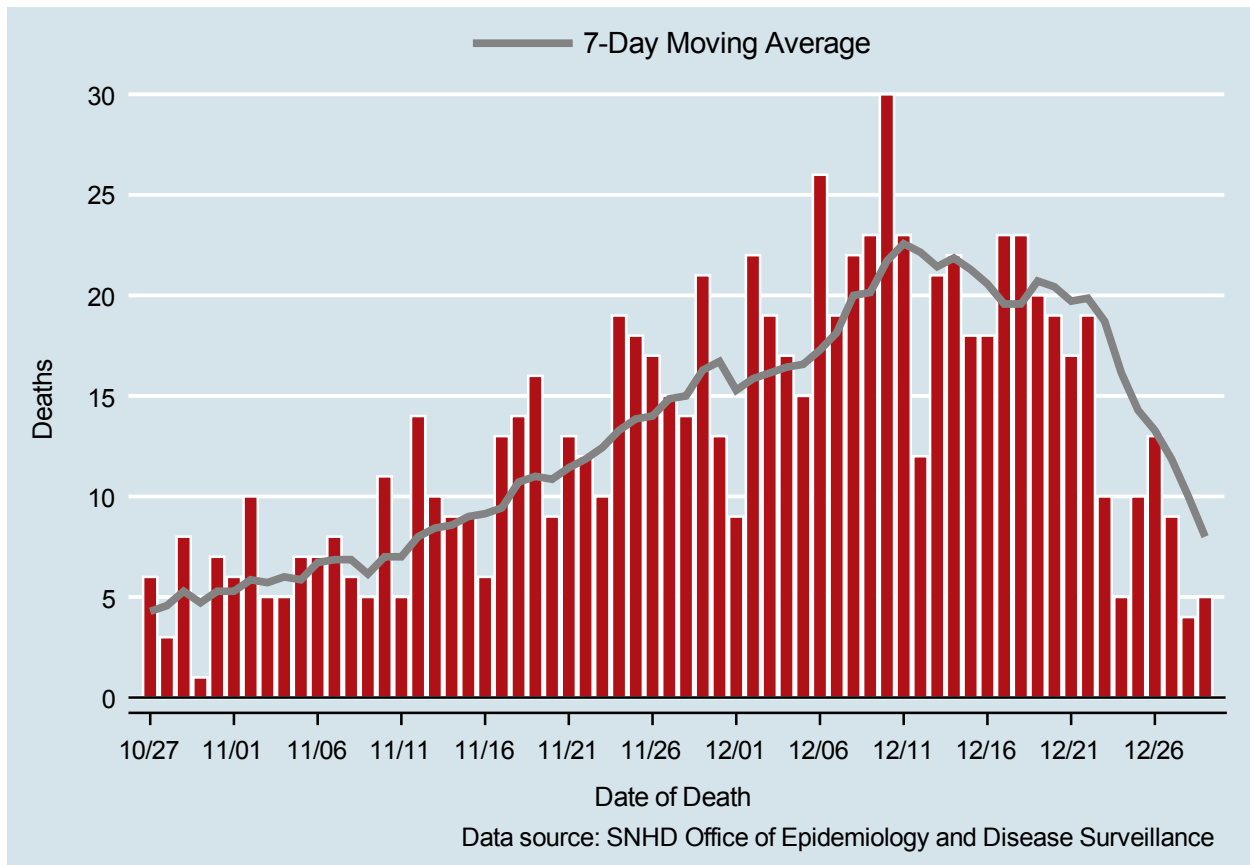


Table 3: COVID-19 Deaths per Day, Clark County, NV

Date	Deaths Per Day	7-Day Moving Average
DEC 16	18	20.6
DEC 17	23	19.6
DEC 18	23	19.6
DEC 19	20	20.7
DEC 20	19	20.4
DEC 21	17	19.7
DEC 22	19	19.9
DEC 23	10	18.7
DEC 24	5	16.1
DEC 25	10	14.3
DEC 26	13	13.3
DEC 27	9	11.9
DEC 28	4	10.0
DEC 29	5	8.0

7-Day Average of Daily New Cases per 100K, by Age Group (Years)

Clark County, NV

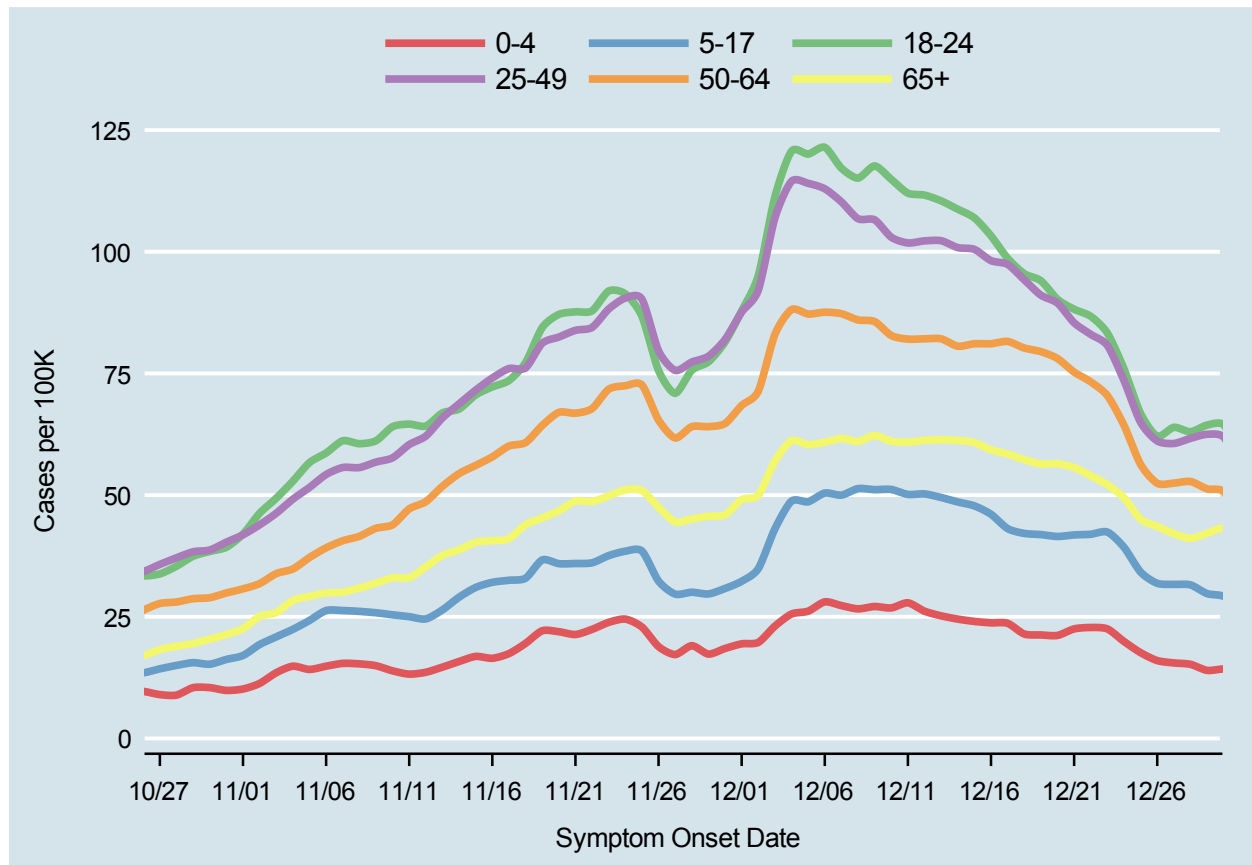
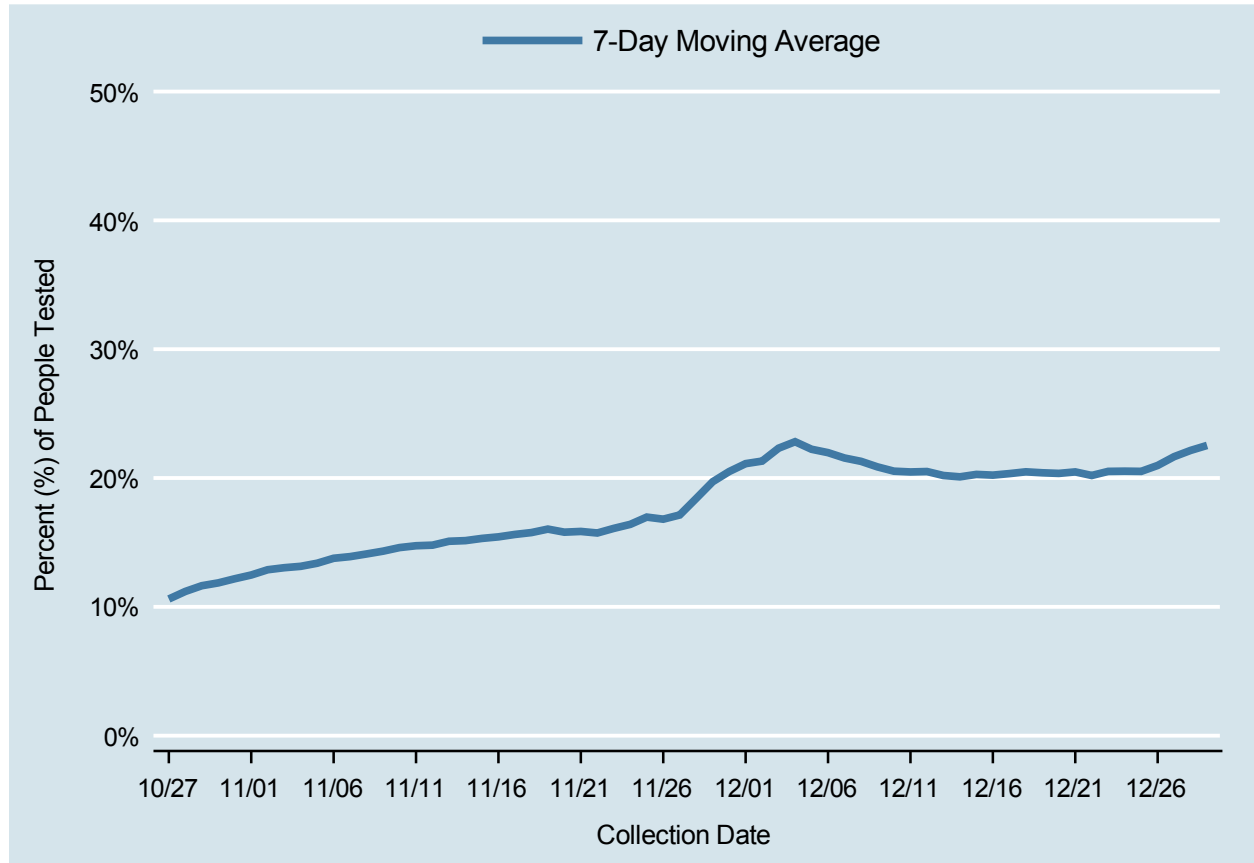


Table 4: 7-Day Average of Daily New Cases per 100K, by Age Group (Years)

Date	0-4	5-17	18-24	25-49	50-64	65+
DEC 16	23.8	46.1	103.3	98.2	81.1	59.3
DEC 17	23.7	43.1	98.7	97.4	81.6	58.5
DEC 18	21.5	42.1	95.5	94.2	80.2	57.3
DEC 19	21.3	41.9	94.0	91.1	79.5	56.4
DEC 20	21.2	41.5	90.2	89.4	78.1	56.4
DEC 21	22.5	41.8	88.2	85.4	75.3	55.7
DEC 22	22.8	42.0	86.7	83.0	73.3	54.0
DEC 23	22.5	42.4	83.3	80.7	70.4	52.1
DEC 24	19.9	39.3	75.9	73.5	64.3	49.4
DEC 25	17.6	34.2	66.8	64.9	56.3	45.0
DEC 26	16.0	31.9	62.1	61.1	52.4	43.6
DEC 27	15.5	31.7	63.9	60.6	52.5	42.1
DEC 28	15.2	31.6	63.0	61.7	52.8	41.1
DEC 29	14.0	29.8	64.4	62.5	51.3	42.1

Percent of People Receiving COVID-19 Viral Tests Who Have Positive Results

Clark County, NV



Report prepared by: Kellie Watkins, PhD, MS, Ying Zhang, PhD, MPH, Kathryn Barker, MPH (Office of Epidemiology and Disease Surveillance) and Lei Zhang, MS (Office of Informatics)