

# COVID-19 Trends

Clark County, Nevada

Document creation date: December 26, 2021

- General notes: This report uses surveillance data collected by the Southern Nevada Health District. Due to delays related to laboratory processing, reporting, and case investigations, data from the most recent days are less complete than data from older time points. For this reason, as of June 10, 2020 this report will not display data from the previous three days prior to the date that the report was created. As many case investigations are ongoing, all data presented in this report are considered preliminary and subject to change. Data regarding cases, hospitalizations, deaths, and labs were last updated December 26, 2021 at 12:00 AM, and data is reported up through December 22, 2021.
- Cases: Symptom onset date was used for aggregating cases. If symptom onset date was missing, the following dates were substituted in this order: diagnosis date, lab collection date, report date (date case was reported to SNHD), event creation date (date case was entered into TriSano, SNHD's surveillance system).
- Hospitalizations: Admission date was used for aggregating hospitalizations. If admission date was missing, report date was substituted. If a person had more than one hospitalization after his/her COVID-19 diagnosis, only the first admission date was used.
- Deaths: Date of death was used for aggregating deaths. If date of death was missing, report date was used.
- For the "7-Day Average of Daily New Cases per 100K, by Age Group (Years)" graph and table, the population data source for calculating rate estimates was from Nevada State Demographer "2019 ASRHO Estimates and Projections Summary 2000 to 2038", 2020 projection, vintage 2019. Rates for individual age categories may be based on small numbers, which may give unstable estimates.
- All graphs in this report show data from approximately 60 days prior to the date of the report.
- All tables show data from the last 14 days before the current date, with the exception of the "Percent Change in Weekly Totals from Previous Week", which displays data from the previous eight completed weeks.
- For the "Percent of People Receiving COVID-19 Viral Tests Who Have Positive Results" graph, one person who has multiple specimens collected in one day is only reported once. If any test of that person is positive, that person counts as a positive result. If all tests of that individual are negative, that person counts as a negative result. Laboratory tests were included if they were a test assessing for the presence of SARS-CoV-2 viral RNA, for example PCR tests. Antibody tests were excluded.

# COVID-19 Cases

Clark County, NV

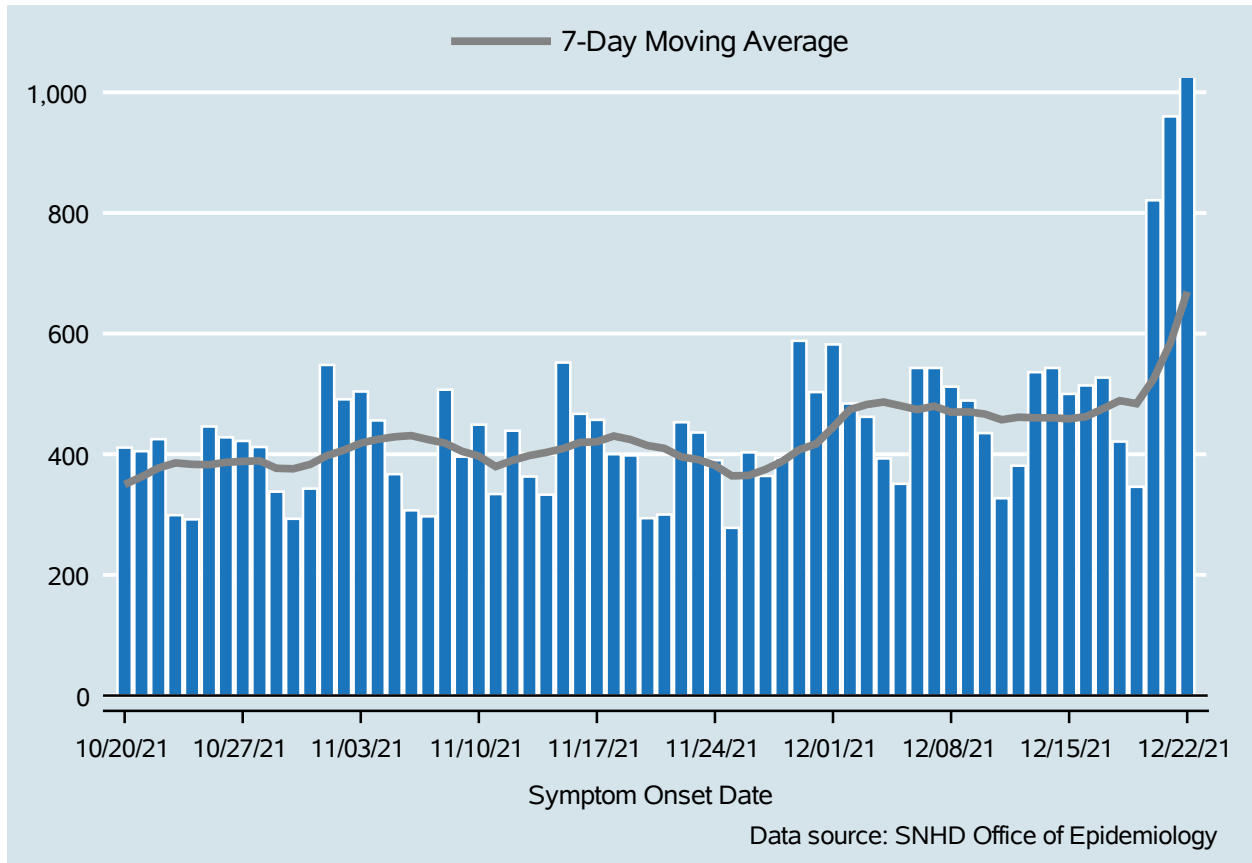


Table 1: COVID-19 Cases per Day, Clark County, NV

Date	Cases Per Day	7-Day Moving Average
Dec 09	489	470.4
Dec 10	435	466.6
Dec 11	327	457.1
Dec 12	381	461.4
Dec 13	536	460.4
Dec 14	543	460.4
Dec 15	500	458.7
Dec 16	514	462.3
Dec 17	527	475.4
Dec 18	421	488.9
Dec 19	346	483.9
Dec 20	821	524.6
Dec 21	960	584.1
Dec 22	1,098	669.6

# COVID-19 Hospitalizations

Clark County, NV

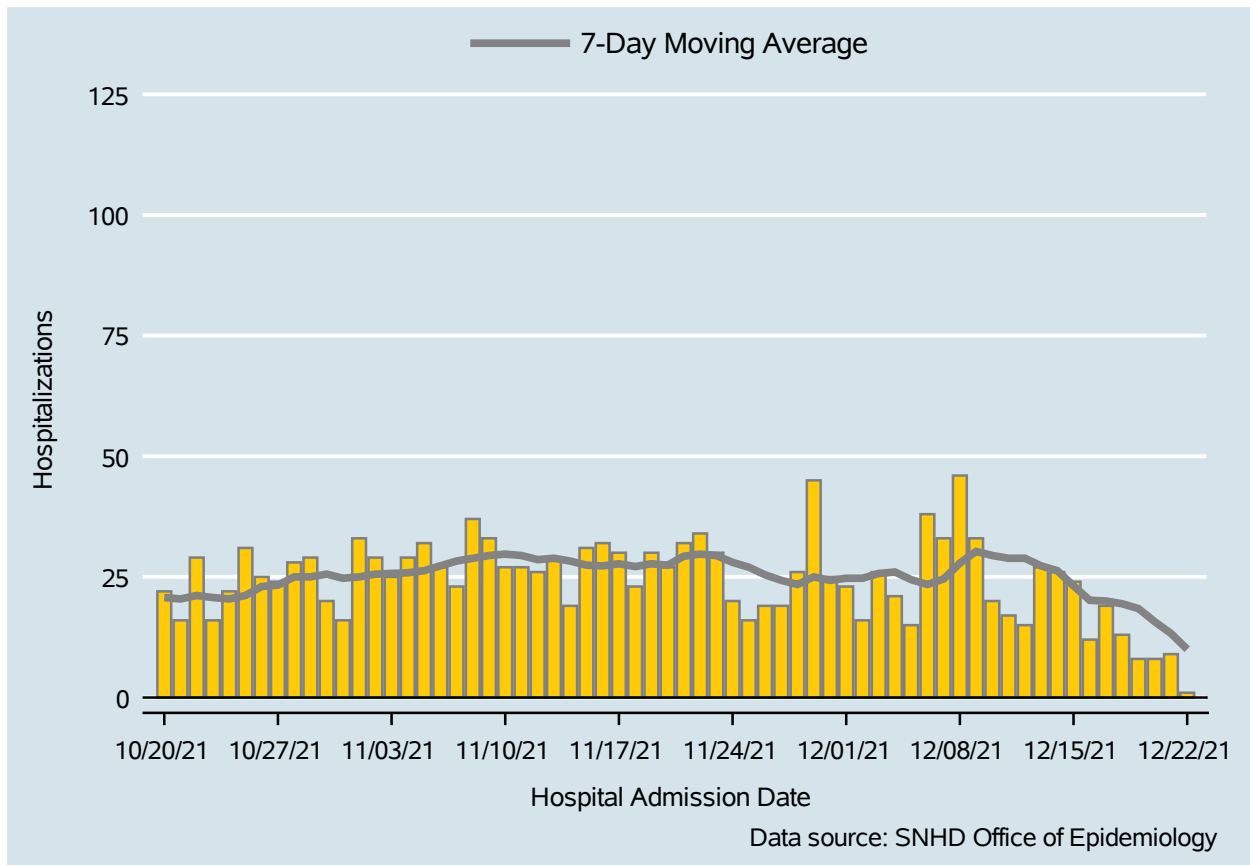


Table 2: COVID-19 Hospitalizations per Day, Clark County, NV

Date	Hospitalizations Per Day	7-Day Moving Average
Dec 09	33	30.3
Dec 10	20	29.4
Dec 11	17	28.9
Dec 12	15	28.9
Dec 13	27	27.3
Dec 14	26	26.3
Dec 15	24	23.1
Dec 16	12	20.1
Dec 17	19	20.0
Dec 18	13	19.4
Dec 19	8	18.4
Dec 20	8	15.7
Dec 21	9	13.3
Dec 22	1	10.0

# COVID-19 Deaths

Clark County, NV

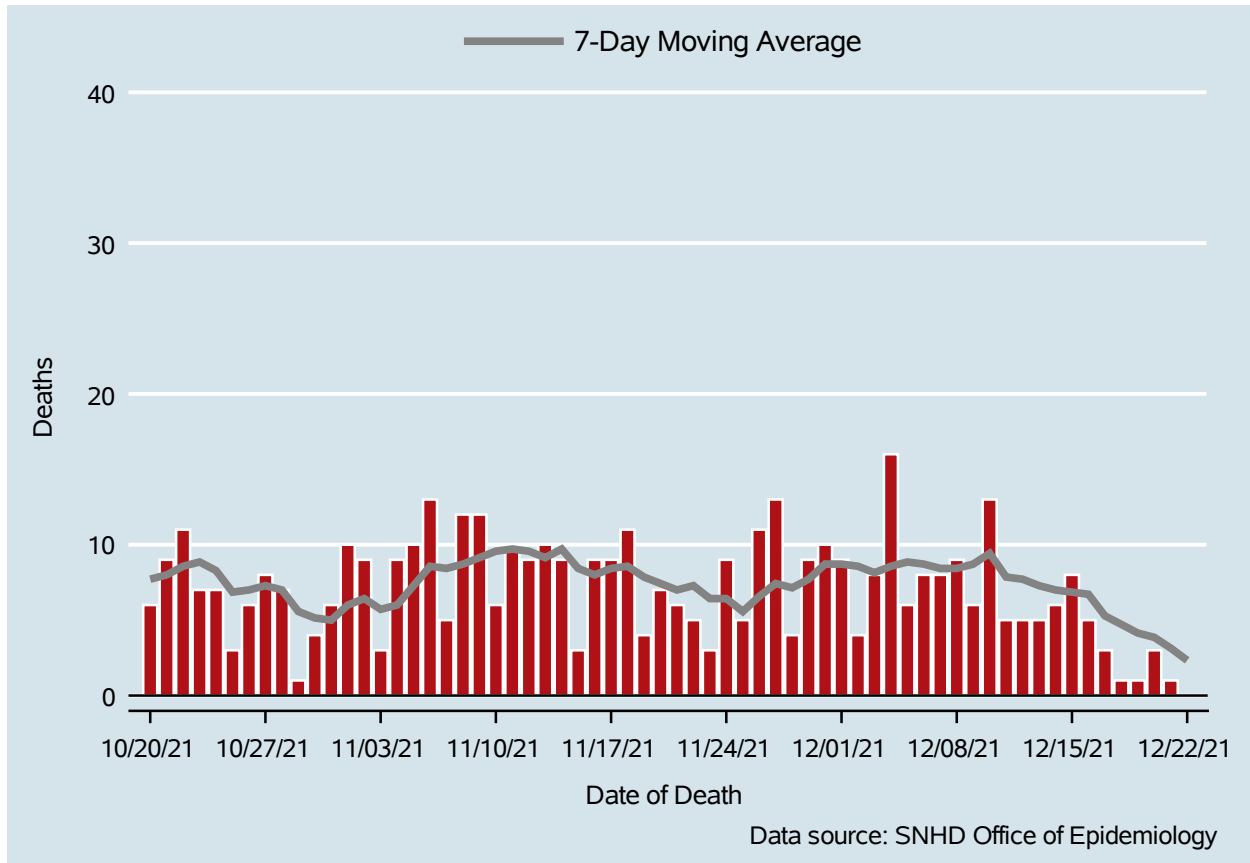


Table 3: COVID-19 Deaths per Day, Clark County, NV

Date	Deaths Per Day	7-Day Moving Average
Dec 09	6	8.7
Dec 10	13	9.4
Dec 11	5	7.9
Dec 12	5	7.7
Dec 13	5	7.3
Dec 14	6	7.0
Dec 15	8	6.9
Dec 16	5	6.7
Dec 17	3	5.3
Dec 18	1	4.7
Dec 19	1	4.1
Dec 20	3	3.9
Dec 21	1	3.1
Dec 22	.	2.3

## 7-Day Average of Daily New Cases per 100K, by Age Group (Years)

Clark County, NV

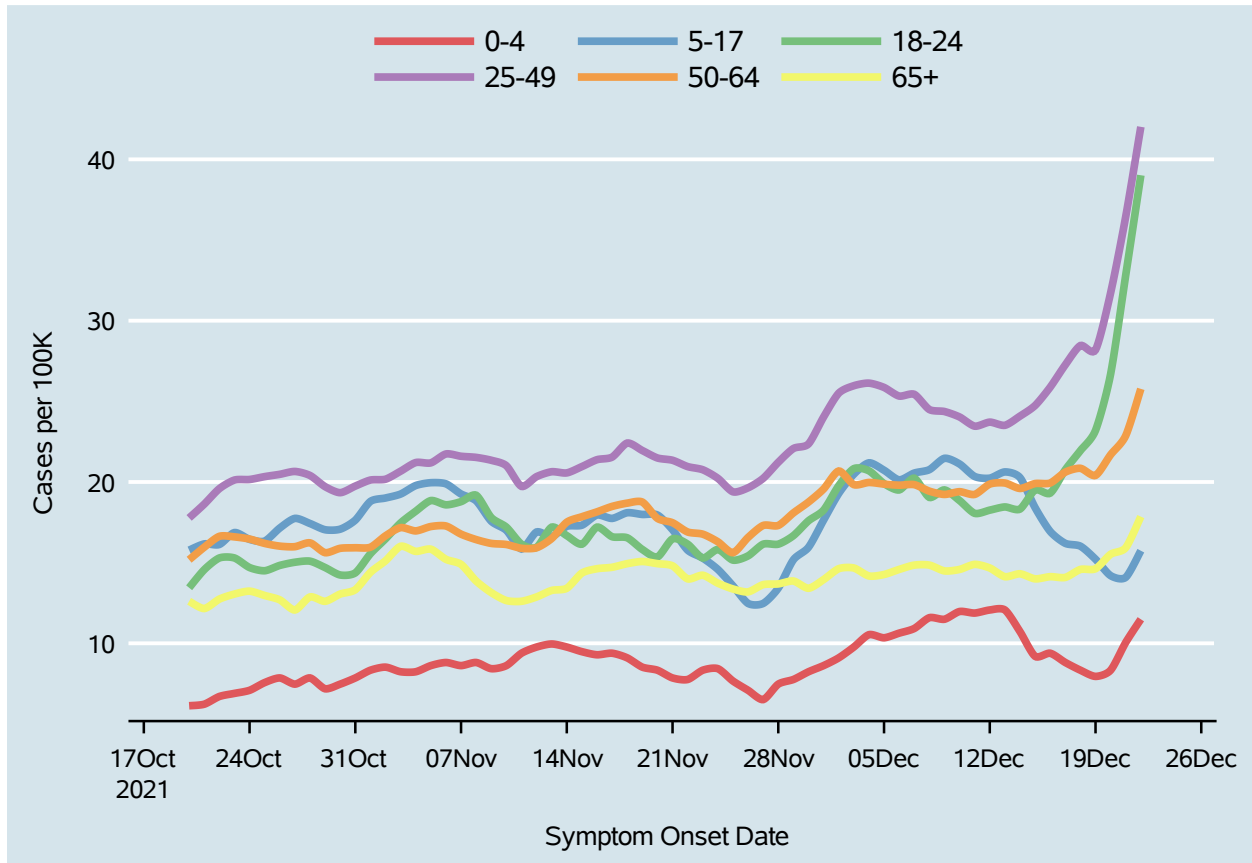
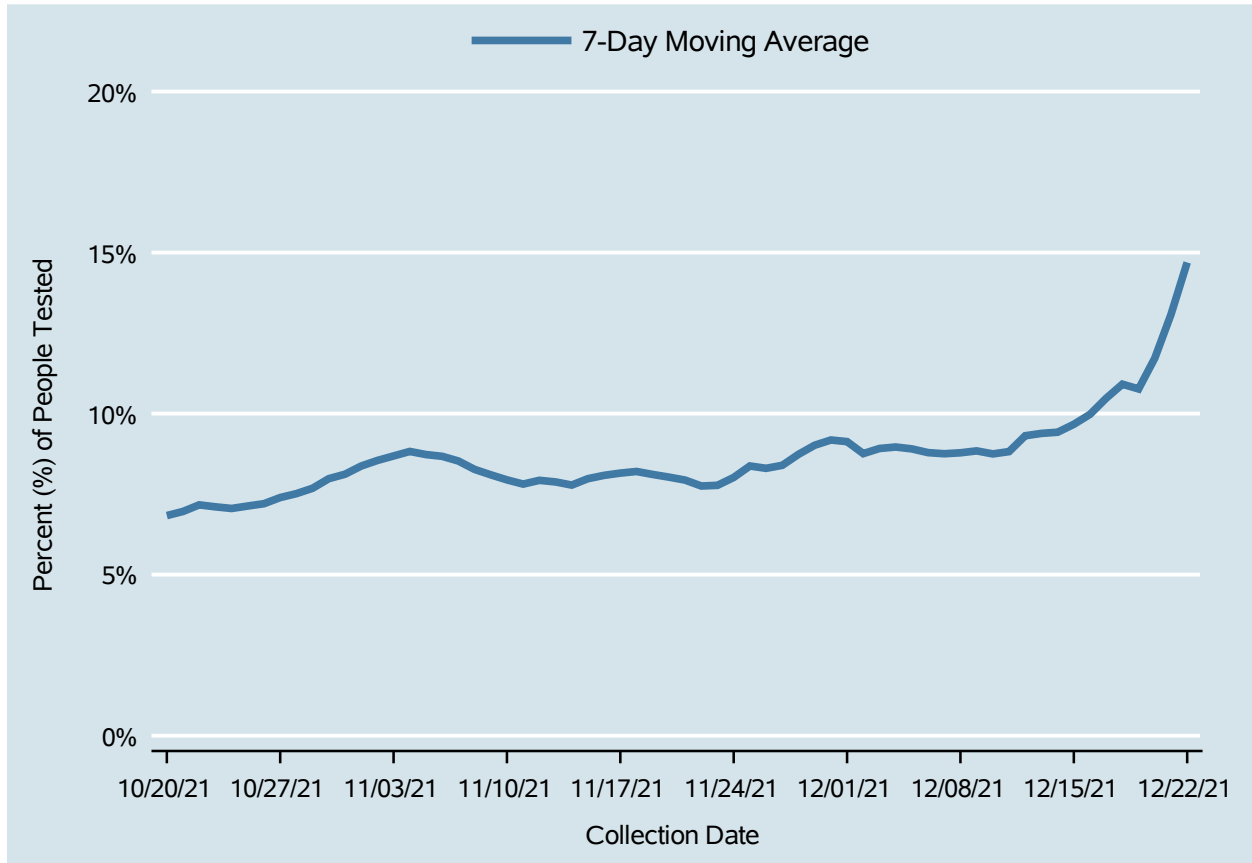


Table 4: 7-Day Average of Daily New Cases per 100K, by Age Group (Years)

Date	0-4	5-17	18-24	25-49	50-64	65+
Dec 09	11.5	21.5	19.5	24.4	19.2	14.5
Dec 10	12.0	21.1	18.8	24.0	19.4	14.6
Dec 11	11.9	20.3	18.1	23.5	19.2	14.9
Dec 12	12.1	20.2	18.3	23.7	19.9	14.7
Dec 13	12.1	20.6	18.5	23.5	19.9	14.1
Dec 14	10.7	20.3	18.3	24.1	19.6	14.3
Dec 15	9.2	18.4	19.5	24.7	19.9	14.0
Dec 16	9.4	16.9	19.3	25.9	19.9	14.1
Dec 17	8.8	16.2	20.8	27.3	20.6	14.1
Dec 18	8.3	16.0	21.9	28.5	20.8	14.6
Dec 19	7.9	15.2	23.2	28.2	20.4	14.6
Dec 20	8.3	14.2	26.7	31.7	21.7	15.5
Dec 21	10.1	14.1	32.8	36.5	22.9	15.9
Dec 22	11.5	15.7	39.0	42.0	25.8	17.9

## Percent of People Receiving COVID-19 Viral Tests Who Have Positive Results

Clark County, NV



*Report prepared by: Kellie Watkins, PhD, MS, Ying Zhang, PhD, MPH (Office of Epidemiology) and Lei Zhang, MS (Office of Informatics)*