

# COVID-19 Trends

Clark County, Nevada

Document creation date: December 18, 2021

- General notes: This report uses surveillance data collected by the Southern Nevada Health District. Due to delays related to laboratory processing, reporting, and case investigations, data from the most recent days are less complete than data from older time points. For this reason, as of June 10, 2020 this report will not display data from the previous three days prior to the date that the report was created. As many case investigations are ongoing, all data presented in this report are considered preliminary and subject to change. Data regarding cases, hospitalizations, deaths, and labs were last updated December 18, 2021 at 12:00 AM, and data is reported up through December 14, 2021.
- Cases: Symptom onset date was used for aggregating cases. If symptom onset date was missing, the following dates were substituted in this order: diagnosis date, lab collection date, report date (date case was reported to SNHD), event creation date (date case was entered into TriSano, SNHD's surveillance system).
- Hospitalizations: Admission date was used for aggregating hospitalizations. If admission date was missing, report date was substituted. If a person had more than one hospitalization after his/her COVID-19 diagnosis, only the first admission date was used.
- Deaths: Date of death was used for aggregating deaths. If date of death was missing, report date was used.
- For the "7-Day Average of Daily New Cases per 100K, by Age Group (Years)" graph and table, the population data source for calculating rate estimates was from Nevada State Demographer "2019 ASRHO Estimates and Projections Summary 2000 to 2038", 2020 projection, vintage 2019. Rates for individual age categories may be based on small numbers, which may give unstable estimates.
- All graphs in this report show data from approximately 60 days prior to the date of the report.
- All tables show data from the last 14 days before the current date, with the exception of the "Percent Change in Weekly Totals from Previous Week", which displays data from the previous eight completed weeks.
- For the "Percent of People Receiving COVID-19 Viral Tests Who Have Positive Results" graph, one person who has multiple specimens collected in one day is only reported once. If any test of that person is positive, that person counts as a positive result. If all tests of that individual are negative, that person counts as a negative result. Laboratory tests were included if they were a test assessing for the presence of SARS-CoV-2 viral RNA, for example PCR tests. Antibody tests were excluded.

# COVID-19 Cases

Clark County, NV

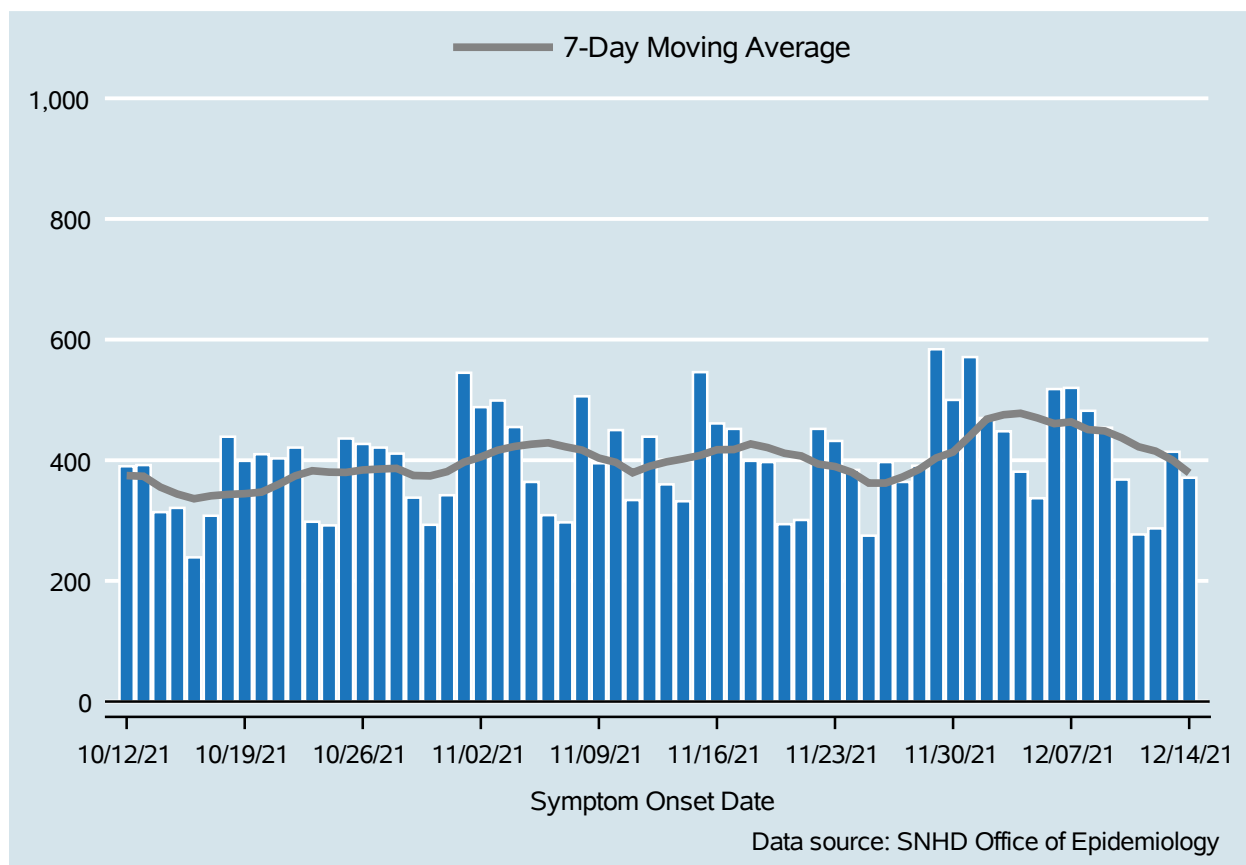


Table 1: COVID-19 Cases per Day, Clark County, NV

Date	Cases Per Day	7-Day Moving Average
Dec 01	571	440.3
Dec 02	470	468.1
Dec 03	448	475.4
Dec 04	381	477.9
Dec 05	337	470.1
Dec 06	518	460.7
Dec 07	520	463.6
Dec 08	482	450.9
Dec 09	454	448.6
Dec 10	368	437.1
Dec 11	277	422.3
Dec 12	287	415.1
Dec 13	414	400.3
Dec 14	371	379.0

# COVID-19 Hospitalizations

Clark County, NV

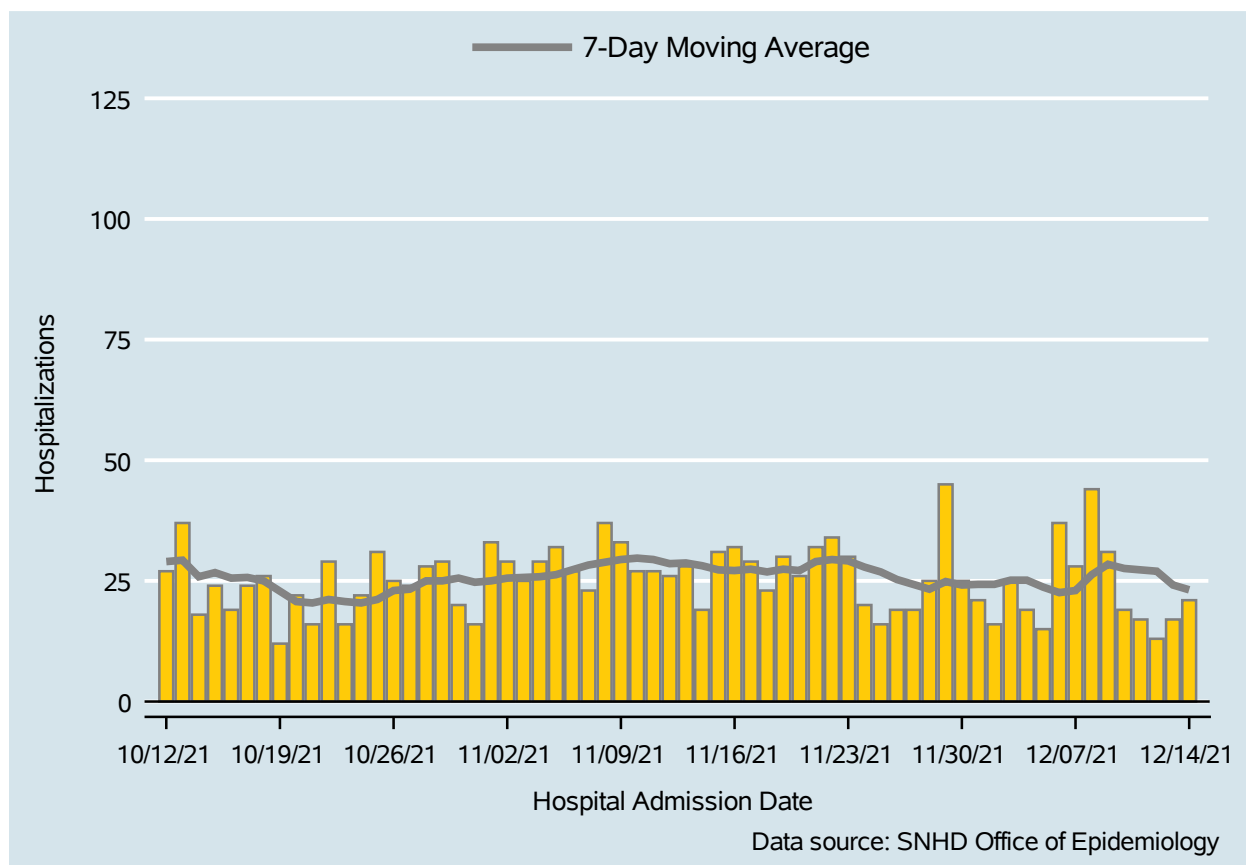


Table 2: COVID-19 Hospitalizations per Day, Clark County, NV

Date	Hospitalizations Per Day	7-Day Moving Average
Dec 01	21	24.3
Dec 02	16	24.3
Dec 03	25	25.1
Dec 04	19	25.1
Dec 05	15	23.7
Dec 06	37	22.6
Dec 07	28	23.0
Dec 08	44	26.3
Dec 09	31	28.4
Dec 10	19	27.6
Dec 11	17	27.3
Dec 12	13	27.0
Dec 13	17	24.1
Dec 14	21	23.1

# COVID-19 Deaths

Clark County, NV

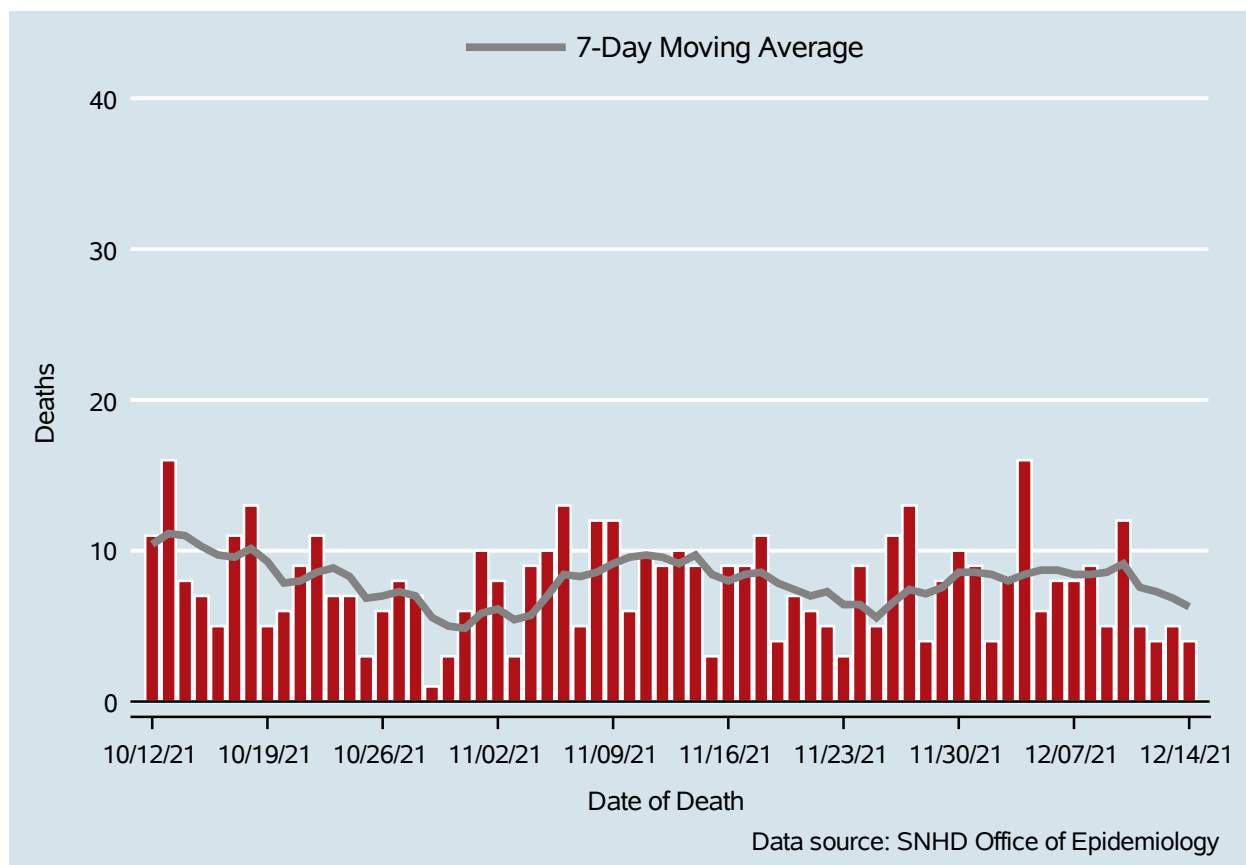


Table 3: COVID-19 Deaths per Day, Clark County, NV

Date	Deaths Per Day	7-Day Moving Average
Dec 01	9	8.6
Dec 02	4	8.4
Dec 03	8	8.0
Dec 04	16	8.4
Dec 05	6	8.7
Dec 06	8	8.7
Dec 07	8	8.4
Dec 08	9	8.4
Dec 09	5	8.6
Dec 10	12	9.1
Dec 11	5	7.6
Dec 12	4	7.3
Dec 13	5	6.9
Dec 14	4	6.3

## 7-Day Average of Daily New Cases per 100K, by Age Group (Years)

Clark County, NV

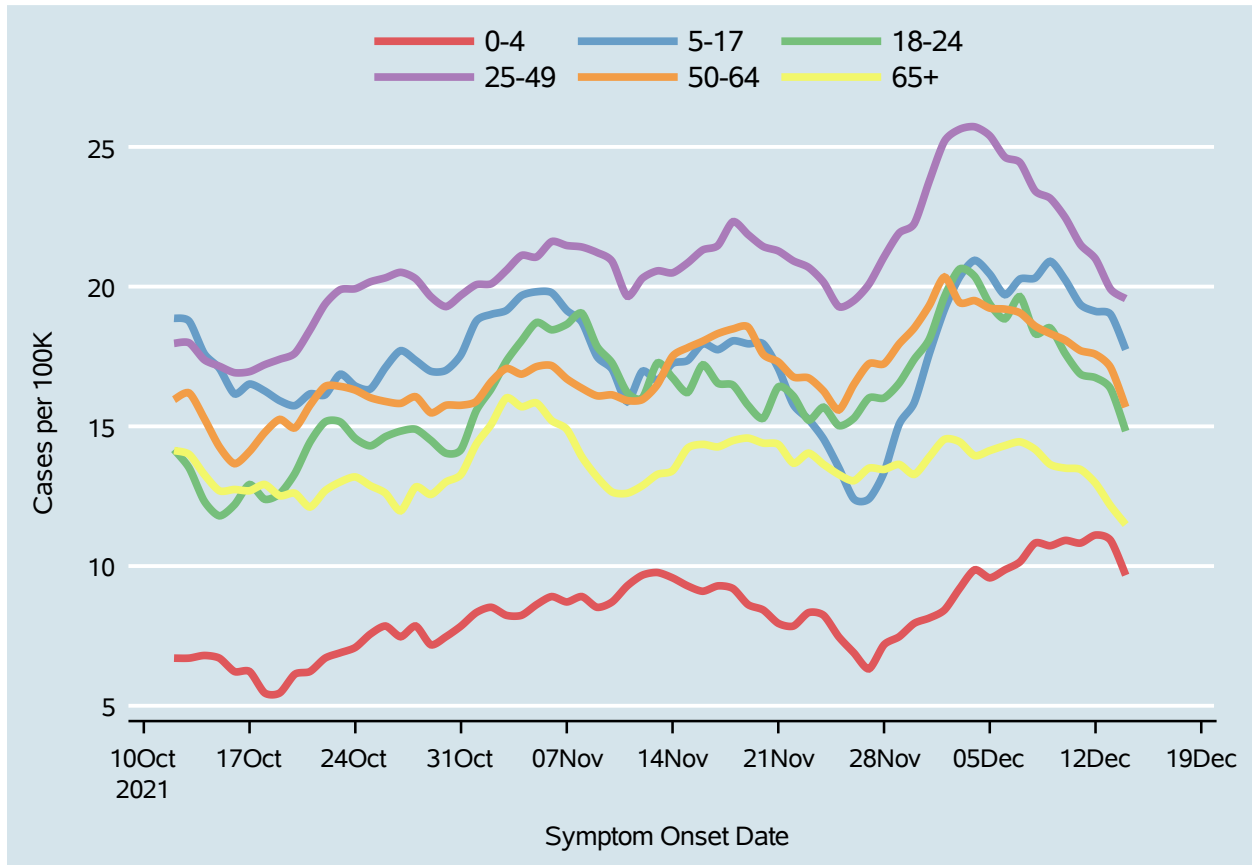
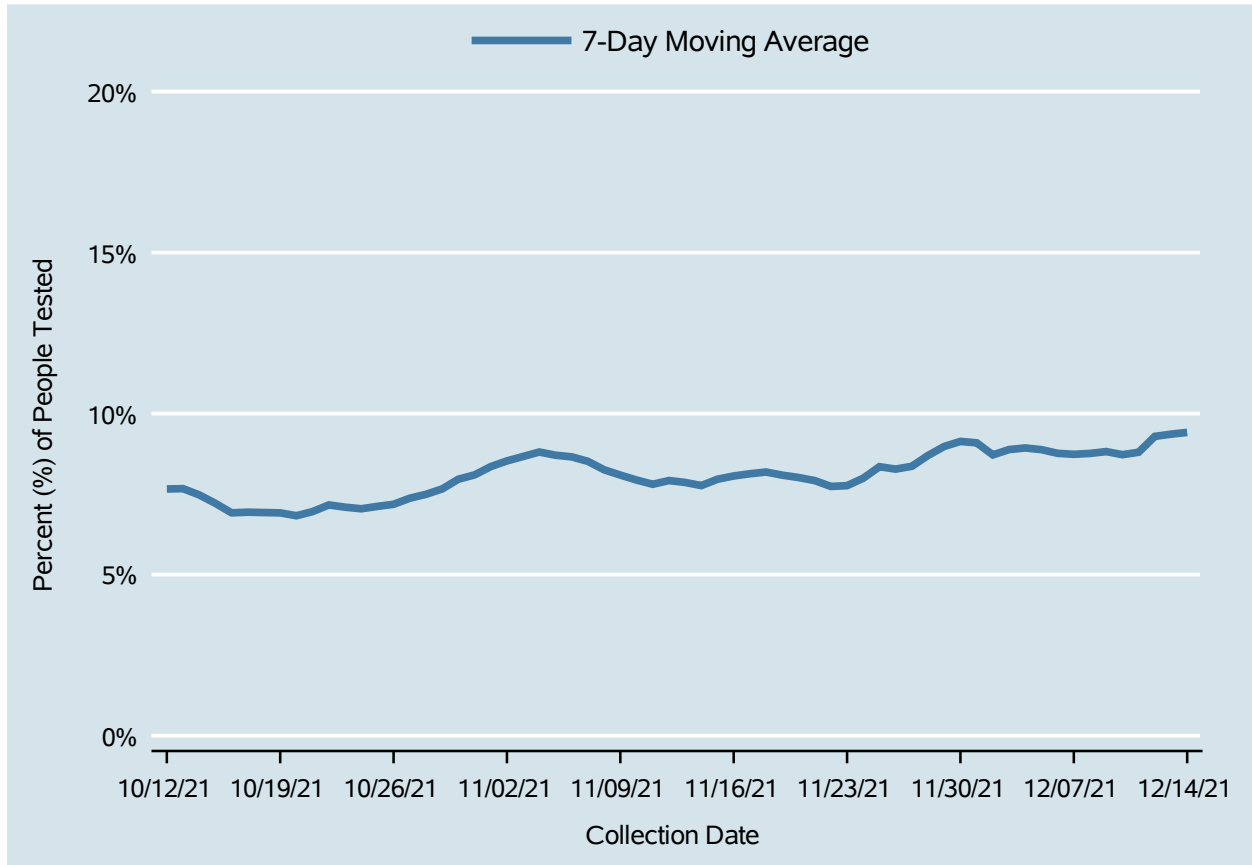


Table 4: 7-Day Average of Daily New Cases per 100K, by Age Group (Years)

Date	0-4	5-17	18-24	25-49	50-64	65+
Dec 01	8.1	17.6	18.1	23.8	19.3	13.9
Dec 02	8.4	19.2	19.6	25.2	20.3	14.5
Dec 03	9.2	20.3	20.6	25.6	19.4	14.4
Dec 04	9.9	20.9	20.4	25.7	19.5	14.0
Dec 05	9.6	20.4	19.4	25.4	19.2	14.1
Dec 06	9.9	19.7	18.8	24.6	19.2	14.3
Dec 07	10.2	20.3	19.6	24.4	19.1	14.4
Dec 08	10.8	20.3	18.3	23.4	18.6	14.2
Dec 09	10.7	20.9	18.5	23.2	18.3	13.6
Dec 10	10.9	20.2	17.6	22.5	18.1	13.5
Dec 11	10.8	19.4	16.9	21.5	17.7	13.5
Dec 12	11.1	19.1	16.7	21.0	17.6	13.0
Dec 13	10.9	19.0	16.3	19.9	17.1	12.2
Dec 14	9.7	17.7	14.8	19.6	15.7	11.5

# Percent of People Receiving COVID-19 Viral Tests Who Have Positive Results

Clark County, NV



*Report prepared by: Kellie Watkins, PhD, MS, Ying Zhang, PhD, MPH (Office of Epidemiology) and Lei Zhang, MS (Office of Informatics)*