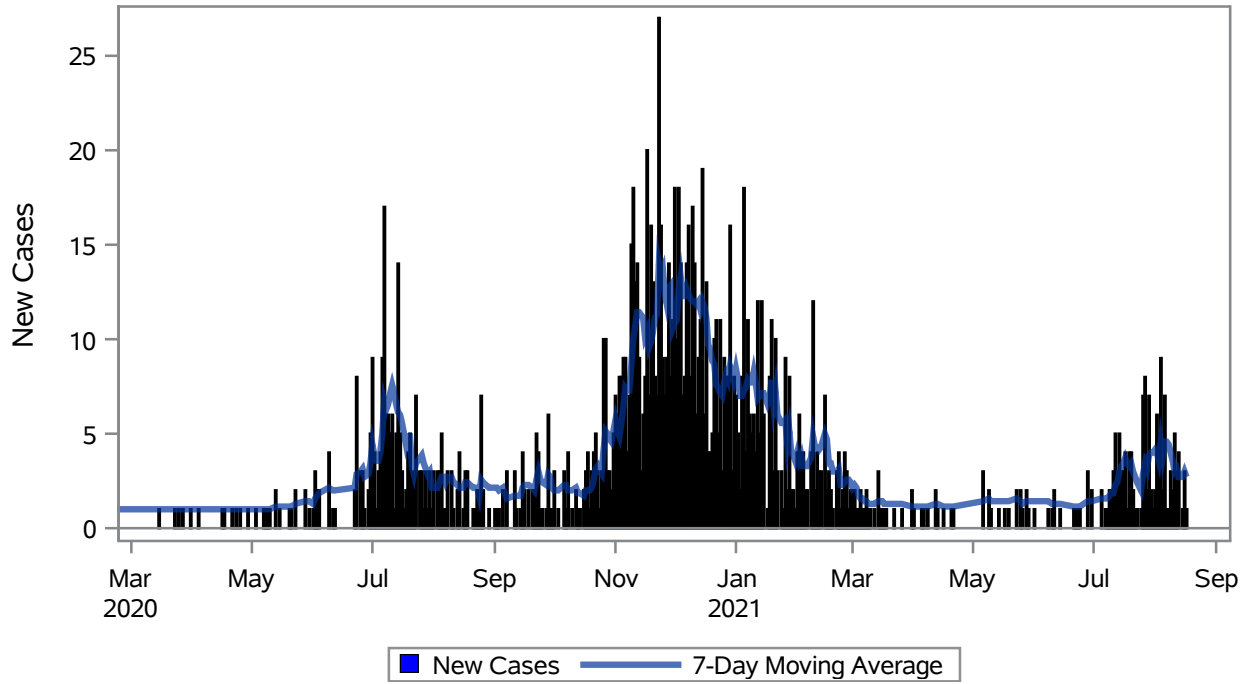


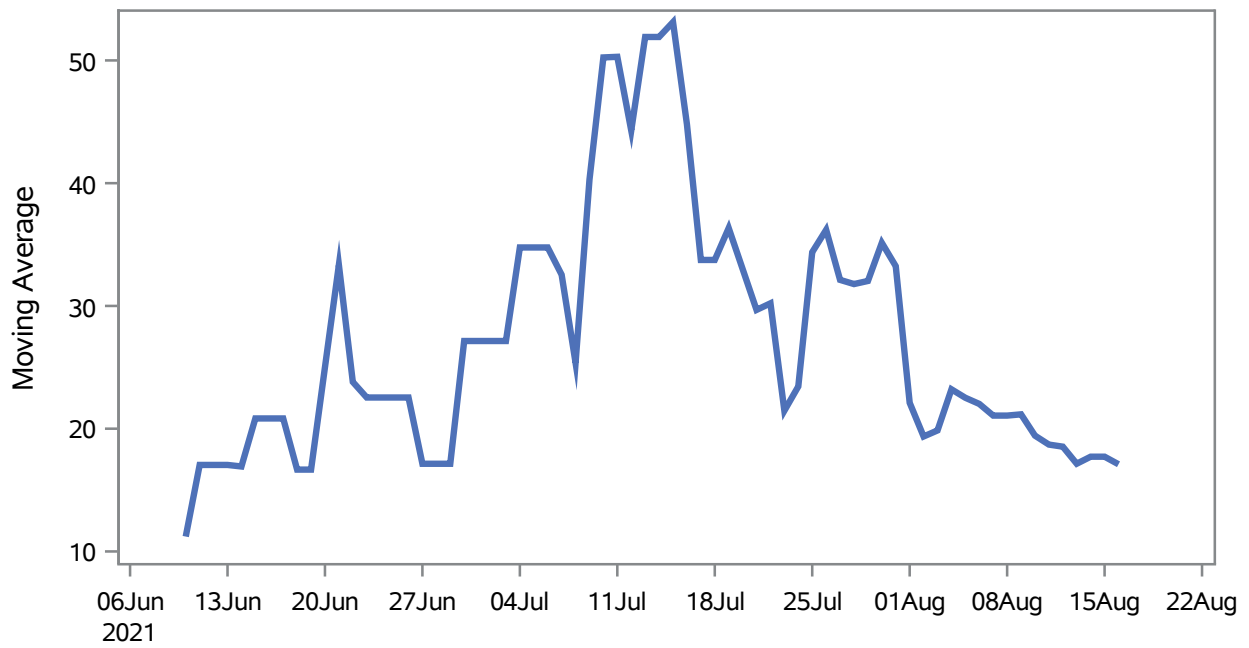
COVID19 Cases for Mesquite, 7-Day Moving Average



Investigations are ongoing; data are subject to change.
Reporting through 18AUG2021

Mesquite zip codes include 89027,89034. The U.S. Census Bureau data uses Zip Code Tabulation Area (ZCTA), which does not list 89034 but has incorporated areas of 89034 within 89027 through the American Community Survey (ACS) 5-Year Estimates.

Percent of People Receiving COVID-19 Viral Tests Who Have Positive Results in Mesquite



Investigations are ongoing; data are subject to change.

Reporting through 18AUG2021

Mesquite zip codes include 89027,89034. The U.S. Census Bureau data uses Zip Code Tabulation Area (ZCTA), which does not list 89034 but has incorporated areas of 89034 within 89027 through the American Community Survey (ACS) 5-Year Estimates.

Table 1: Age and COVID19 in Mesquite

Case Status	Age Categories	N	%	Population	Rate per 100,000
Cases	Aged 4 or less	15	1.0	702	2136.8
	Aged 5 to 17	78	5.4	2,217	3518.3
	Aged 18 to 24	147	10.2	938	15672
	Aged 25 to 49	417	28.9	3,386	12315
	Aged 50 to 64	317	22.0	3,371	9403.7
	Aged 64+	468	32.5	7,290	6419.8
Hospitalizations	Aged 4 or less	1	1.1	702	--
	Aged 5 to 17	1	1.1	2,217	--
	Aged 25 to 49	8	8.7	3,386	--
	Aged 50 to 64	17	18.5	3,371	504.30
	Aged 64+	65	70.7	7,290	891.63
Deaths	Aged 50 to 64	1	3.4	3,371	--
	Aged 64+	28	96.6	7,290	384.09

Note1: Population data source for calculating rate estimates: U.S. Census Bureau, ACS 5-year estimate.

Note2: Rates for categories with fewer than 12 cases are suppressed due to high relative standard error.

Note3: Hospitalizations are regardless of deceased status; Deaths are regardless of hospitalization status

**Investigations are ongoing; data are subject to change.
Reporting through 18AUG2021**

Mesquite zip codes include 89027,89034. The U.S. Census Bureau data uses Zip Code Tabulation Area (ZCTA), which does not list 89034 but has incorporated areas of 89034 within 89027 through the American Community Survey (ACS) 5-Year Estimates.

Table 2: Race/Ethnicity and COVID19 in Mesquite

Case Status	Race Ethnicity Categories	N	%	Population	Rate per 100,000
Cases	Hispanic	452	31.3	3,738	12092
	White	704	48.8	13,120	5365.9
	Black	--	--	148	--
	Asian	--	--	486	5144.0
	American Indian/Alaskan Native	--	--	95	--
	Multi-race	--	--	240	--
	Native Hawaiian/Pacific Islander	--	--	30	--
	Unknown	241	16.7	.	.
Hospitalizations	Hispanic	21	22.8	3,738	561.80
	White	59	64.1	13,120	449.70
	Black	--	--	148	--
	Asian	--	--	486	--
	American Indian/Alaskan Native	--	--	95	--
	Multi-race	--	--	240	--
	Native Hawaiian/Pacific Islander	--	--	30	--
	Unknown	--	--	.	.
Deaths	Hispanic	2	6.9	3,738	--
	White	26	89.7	13,120	198.17
	Asian	--	--	486	--

Note1: Population data source for calculating rate estimates: U.S. Census Bureau, ACS 5-year estimate.

Note2: Rates for categories with fewer than 12 cases are suppressed due to high relative standard error. Counts for categories with population less than 500 are suppressed for confidentiality.

Note3: Due to suppression, the total counts per case status may not equal expected totals.

Note4: Hospitalizations are regardless of deceased status; Deaths are regardless of hospitalization status

**Investigations are ongoing; data are subject to change.
Reporting through 18AUG2021**

Mesquite zip codes include 89027,89034. The U.S. Census Bureau data uses Zip Code Tabulation Area (ZCTA), which does not list 89034 but has incorporated areas of 89034 within 89027 through the American Community Survey (ACS) 5-Year Estimates.

Table 3: Birth Sex and COVID19 in Mesquite

Case Status	Birth Sex Categories	N	%	Population	Rate per 100,000
Cases	Female	785	54.4	9,111	8616.0
	Male	647	44.9	8,793	7358.1
	Unknown	10	0.7	.	.
Hospitalizations	Female	42	45.7	9,111	460.98
	Male	50	54.3	8,793	568.63
Deaths	Female	10	34.5	9,111	--
	Male	19	65.5	8,793	216.08

Note1: Population data source for calculating rate estimates: U.S. Census Bureau, ACS 5-year estimate.

Note2: Rates for categories with fewer than 12 cases are suppressed due to high relative standard error. Counts for categories with population less than 500 are suppressed for confidentiality.

Note3: Hospitalizations are regardless of deceased status; Deaths are regardless of hospitalization status

**Investigations are ongoing; data are subject to change.
Reporting through 18AUG2021**

Mesquite zip codes include 89027,89034. The U.S. Census Bureau data uses Zip Code Tabulation Area (ZCTA), which does not list 89034 but has incorporated areas of 89034 within 89027 through the American Community Survey (ACS) 5-Year Estimates.