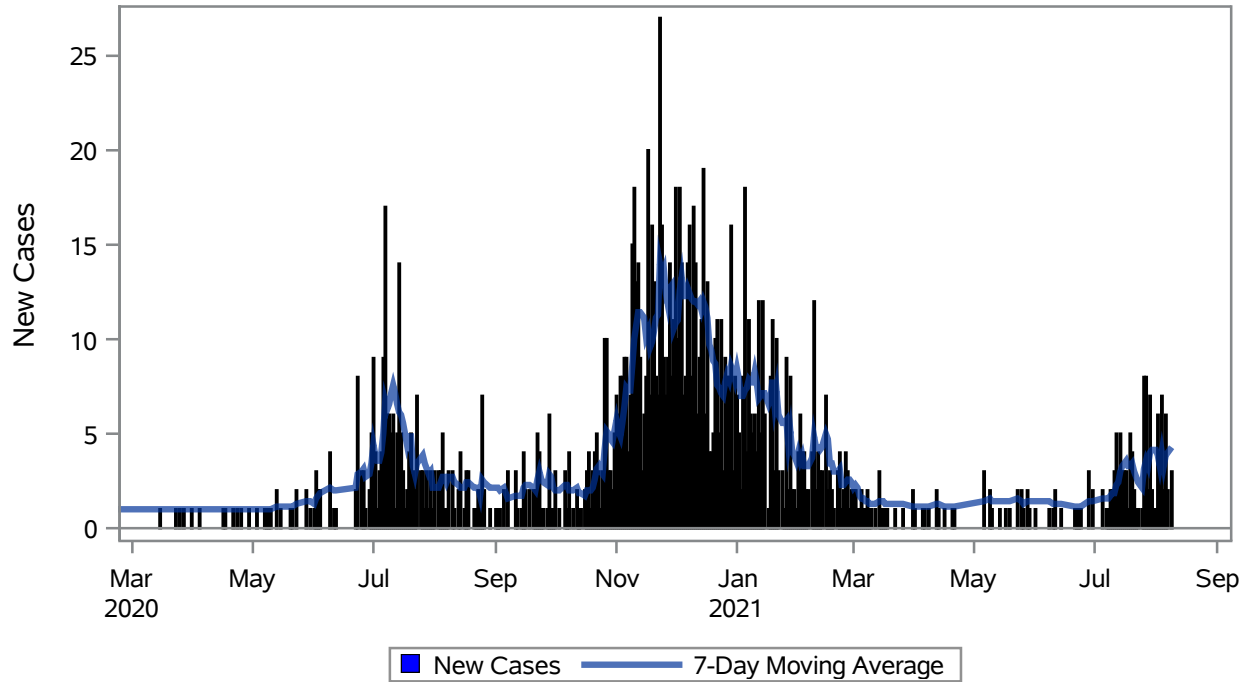


### COVID19 Cases for Mesquite, 7-Day Moving Average

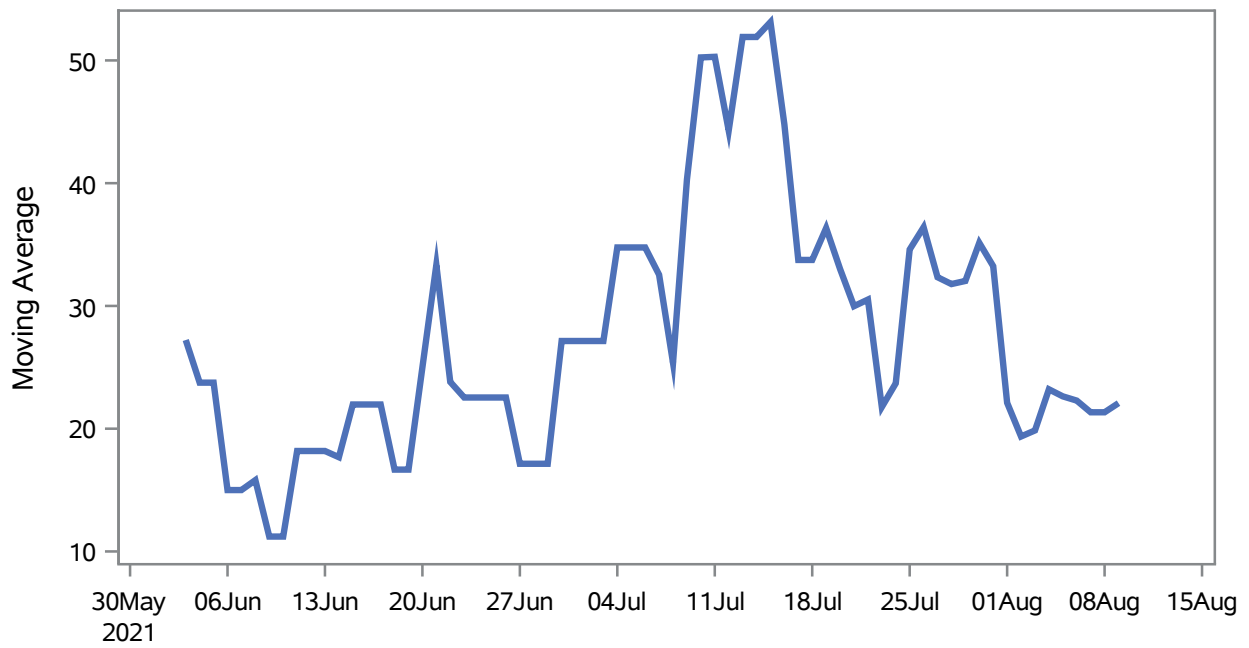


Investigations are ongoing; data are subject to change.

Reporting through 11AUG2021

Mesquite zip codes include 89027,89034. The U.S. Census Bureau data uses Zip Code Tabulation Area (ZCTA), which does not list 89034 but has incorporated areas of 89034 within 89027 through the American Community Survey (ACS) 5-Year Estimates.

### Percent of People Receiving COVID-19 Viral Tests Who Have Positive Results in Mesquite



Investigations are ongoing; data are subject to change.

Reporting through 11AUG2021

Mesquite zip codes include 89027,89034. The U.S. Census Bureau data uses Zip Code Tabulation Area (ZCTA), which does not list 89034 but has incorporated areas of 89034 within 89027 through the American Community Survey (ACS) 5-Year Estimates.

**Table 1: Age and COVID19 in Mesquite**

Case Status	Age Categories	N	%	Population	Rate per 100,000
Cases	Aged 4 or less	15	1.1	702	2136.8
	Aged 5 to 17	77	5.4	2,217	3473.2
	Aged 18 to 24	143	10.1	938	15245
	Aged 25 to 49	412	29.0	3,386	12168
	Aged 50 to 64	311	21.9	3,371	9225.7
	Aged 64+	463	32.6	7,290	6351.2
Hospitalizations	Aged 4 or less	1	1.1	702	--
	Aged 5 to 17	1	1.1	2,217	--
	Aged 25 to 49	8	9.0	3,386	--
	Aged 50 to 64	17	19.1	3,371	504.30
	Aged 64+	62	69.7	7,290	850.48
Deaths	Aged 50 to 64	1	3.4	3,371	--
	Aged 64+	28	96.6	7,290	384.09

Note1: Population data source for calculating rate estimates: U.S. Census Bureau, ACS 5-year estimate.

Note2: Rates for categories with fewer than 12 cases are suppressed due to high relative standard error.

Note3: Hospitalizations are regardless of deceased status; Deaths are regardless of hospitalization status

**Investigations are ongoing; data are subject to change.  
Reporting through 11AUG2021**

**Mesquite zip codes include 89027,89034. The U.S. Census Bureau data uses Zip Code Tabulation Area (ZCTA), which does not list 89034 but has incorporated areas of 89034 within 89027 through the American Community Survey (ACS) 5-Year Estimates.**

**Table 2: Race/Ethnicity and COVID19 in Mesquite**

Case Status	Race Ethnicity Categories	N	%	Population	Rate per 100,000
Cases	Hispanic	447	31.5	3,738	11958
	White	694	48.8	13,120	5289.6
	Black	--	--	148	--
	Asian	--	--	486	5144.0
	American Indian/Alaskan Native	--	--	95	--
	Multi-race	--	--	240	--
	Native Hawaiian/Pacific Islander	--	--	30	--
	Unknown	235	16.5	.	.
Hospitalizations	Hispanic	19	21.3	3,738	508.29
	White	58	65.2	13,120	442.07
	Black	--	--	148	--
	Asian	--	--	486	--
	American Indian/Alaskan Native	--	--	95	--
	Multi-race	--	--	240	--
	Native Hawaiian/Pacific Islander	--	--	30	--
	Unknown	--	--	.	.
Deaths	Hispanic	2	6.9	3,738	--
	White	26	89.7	13,120	198.17
	Asian	--	--	486	--

Note1: Population data source for calculating rate estimates: U.S. Census Bureau, ACS 5-year estimate.

Note2: Rates for categories with fewer than 12 cases are suppressed due to high relative standard error. Counts for categories with population less than 500 are suppressed for confidentiality.

Note3: Due to suppression, the total counts per case status may not equal expected totals.

Note4: Hospitalizations are regardless of deceased status; Deaths are regardless of hospitalization status

**Investigations are ongoing; data are subject to change.  
Reporting through 11AUG2021**

**Mesquite zip codes include 89027,89034. The U.S. Census Bureau data uses Zip Code Tabulation Area (ZCTA), which does not list 89034 but has incorporated areas of 89034 within 89027 through the American Community Survey (ACS) 5-Year Estimates.**

**Table 3: Birth Sex and COVID19 in Mesquite**

Case Status	Birth Sex Categories	N	%	Population	Rate per 100,000
Cases	Female	780	54.9	9,111	8561.1
	Male	631	44.4	8,793	7176.2
	Unknown	10	0.7	.	.
Hospitalizations	Female	41	46.1	9,111	450.01
	Male	48	53.9	8,793	545.89
Deaths	Female	10	34.5	9,111	--
	Male	19	65.5	8,793	216.08

Note1: Population data source for calculating rate estimates: U.S. Census Bureau, ACS 5-year estimate.

Note2: Rates for categories with fewer than 12 cases are suppressed due to high relative standard error. Counts for categories with population less than 500 are suppressed for confidentiality.

Note3: Hospitalizations are regardless of deceased status; Deaths are regardless of hospitalization status

**Investigations are ongoing; data are subject to change.  
Reporting through 11AUG2021**

**Mesquite zip codes include 89027,89034. The U.S. Census Bureau data uses Zip Code Tabulation Area (ZCTA), which does not list 89034 but has incorporated areas of 89034 within 89027 through the American Community Survey (ACS) 5-Year Estimates.**