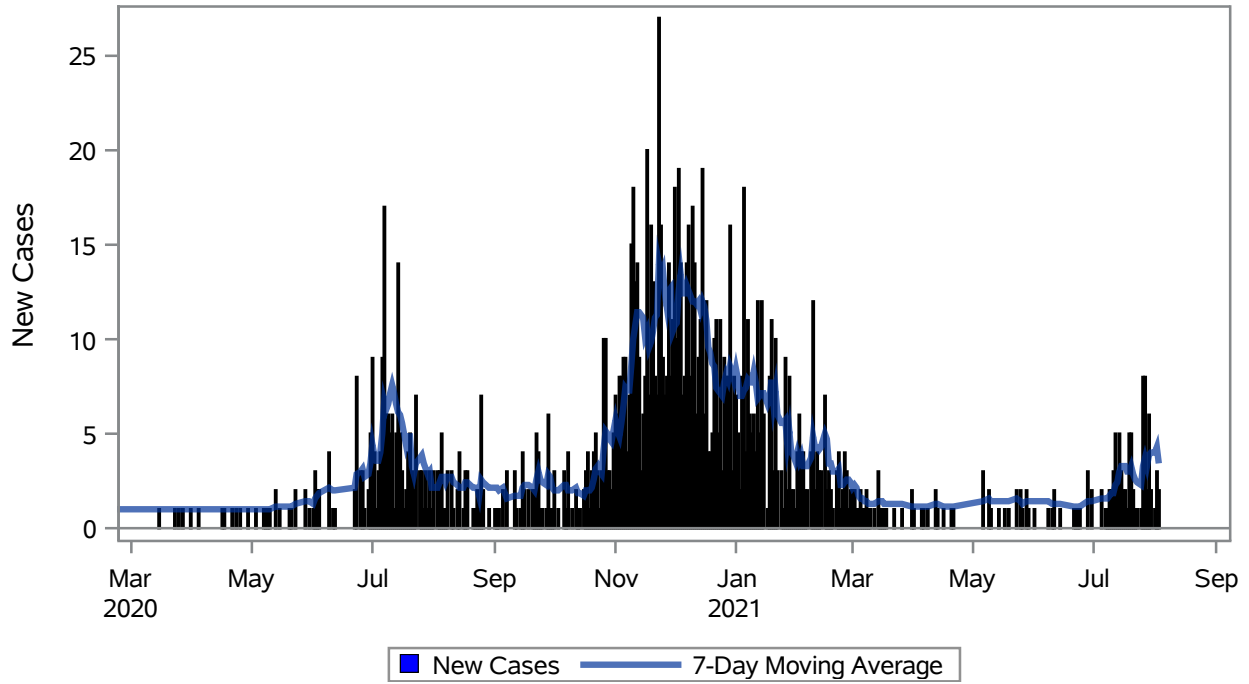


COVID19 Cases for Mesquite, 7-Day Moving Average

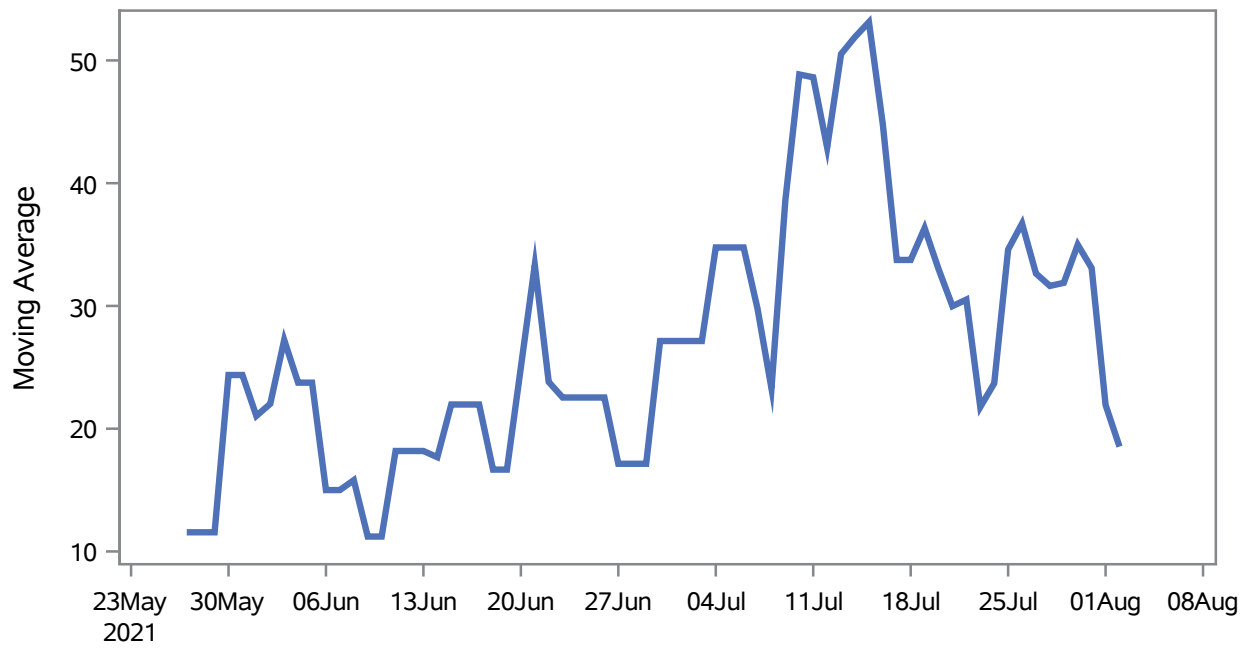


Investigations are ongoing; data are subject to change.

Reporting through 04AUG2021

Mesquite zip codes include 89027,89034. The U.S. Census Bureau data uses Zip Code Tabulation Area (ZCTA), which does not list 89034 but has incorporated areas of 89034 within 89027 through the American Community Survey (ACS) 5-Year Estimates.

Percent of People Receiving COVID-19 Viral Tests Who Have Positive Results in Mesquite



Investigations are ongoing; data are subject to change.

Reporting through 04AUG2021

Mesquite zip codes include 89027,89034. The U.S. Census Bureau data uses Zip Code Tabulation Area (ZCTA), which does not list 89034 but has incorporated areas of 89034 within 89027 through the American Community Survey (ACS) 5-Year Estimates.

Table 1: Age and COVID19 in Mesquite

Case Status	Age Categories	N	%	Population	Rate per 100,000
Cases	Aged 4 or less	14	1.0	702	1994.3
	Aged 5 to 17	74	5.3	2,217	3337.8
	Aged 18 to 24	140	10.1	938	14925
	Aged 25 to 49	405	29.1	3,386	11961
	Aged 50 to 64	300	21.6	3,371	8899.4
	Aged 64+	459	33.0	7,290	6296.3
Hospitalizations	Aged 4 or less	1	1.2	702	--
	Aged 5 to 17	1	1.2	2,217	--
	Aged 25 to 49	8	9.3	3,386	--
	Aged 50 to 64	15	17.4	3,371	444.97
	Aged 64+	61	70.9	7,290	836.76
Deaths	Aged 50 to 64	1	3.4	3,371	--
	Aged 64+	28	96.6	7,290	384.09

Note1: Population data source for calculating rate estimates: U.S. Census Bureau, ACS 5-year estimate.

Note2: Rates for categories with fewer than 12 cases are suppressed due to high relative standard error.

Note3: Hospitalizations are regardless of deceased status; Deaths are regardless of hospitalization status

**Investigations are ongoing; data are subject to change.
Reporting through 04AUG2021**

Mesquite zip codes include 89027,89034. The U.S. Census Bureau data uses Zip Code Tabulation Area (ZCTA), which does not list 89034 but has incorporated areas of 89034 within 89027 through the American Community Survey (ACS) 5-Year Estimates.

Table 2: Race/Ethnicity and COVID19 in Mesquite

Case Status	Race Ethnicity Categories	N	%	Population	Rate per 100,000
Cases	Hispanic	444	31.9	3,738	11878
	White	677	48.6	13,120	5160.1
	Black	--	--	148	--
	Asian	--	--	486	4938.3
	American Indian/Alaskan Native	--	--	95	--
	Multi-race	--	--	240	--
	Native Hawaiian/Pacific Islander	--	--	30	--
	Unknown	227	16.3	.	.
Hospitalizations	Hispanic	19	22.1	3,738	508.29
	White	55	64.0	13,120	419.21
	Black	--	--	148	--
	Asian	--	--	486	--
	American Indian/Alaskan Native	--	--	95	--
	Multi-race	--	--	240	--
	Native Hawaiian/Pacific Islander	--	--	30	--
	Unknown	--	--	.	.
Deaths	Hispanic	2	6.9	3,738	--
	White	25	86.2	13,120	190.55
	Asian	--	--	486	--
	Unknown	--	--	.	.

Note1: Population data source for calculating rate estimates: U.S. Census Bureau, ACS 5-year estimate.

Note2: Rates for categories with fewer than 12 cases are suppressed due to high relative standard error. Counts for categories with population less than 500 are suppressed for confidentiality.

Note3: Due to suppression, the total counts per case status may not equal expected totals.

Note4: Hospitalizations are regardless of deceased status; Deaths are regardless of hospitalization status

**Investigations are ongoing; data are subject to change.
Reporting through 04AUG2021**

Mesquite zip codes include 89027,89034. The U.S. Census Bureau data uses Zip Code Tabulation Area (ZCTA), which does not list 89034 but has incorporated areas of 89034 within 89027 through the American Community Survey (ACS) 5-Year Estimates.

Table 3: Birth Sex and COVID19 in Mesquite

Case Status	Birth Sex Categories	N	%	Population	Rate per 100,000
Cases	Female	764	54.9	9,111	8385.5
	Male	618	44.4	8,793	7028.3
	Unknown	10	0.7	.	.
Hospitalizations	Female	39	45.3	9,111	428.05
	Male	47	54.7	8,793	534.52
Deaths	Female	10	34.5	9,111	--
	Male	19	65.5	8,793	216.08

Note1: Population data source for calculating rate estimates: U.S. Census Bureau, ACS 5-year estimate.

Note2: Rates for categories with fewer than 12 cases are suppressed due to high relative standard error. Counts for categories with population less than 500 are suppressed for confidentiality.

Note3: Hospitalizations are regardless of deceased status; Deaths are regardless of hospitalization status

**Investigations are ongoing; data are subject to change.
Reporting through 04AUG2021**

Mesquite zip codes include 89027,89034. The U.S. Census Bureau data uses Zip Code Tabulation Area (ZCTA), which does not list 89034 but has incorporated areas of 89034 within 89027 through the American Community Survey (ACS) 5-Year Estimates.