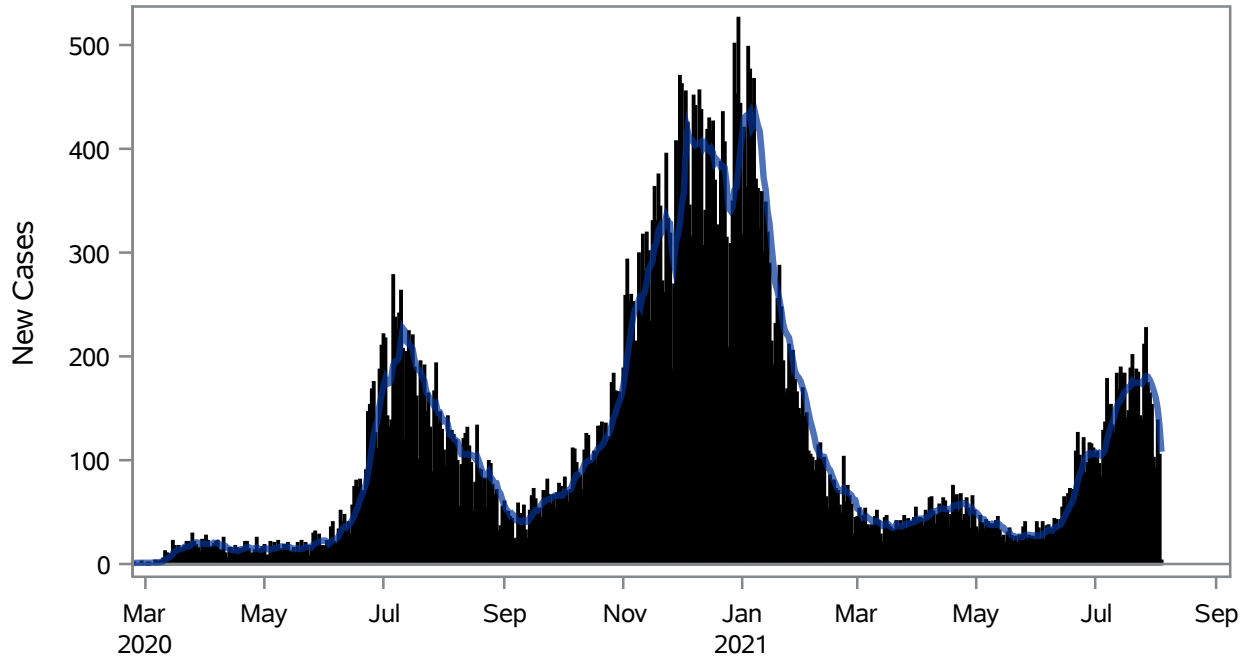


### COVID19 Cases for Henderson, 7-Day Moving Average



■ New Cases      — 7-Day Moving Average

Investigations are ongoing; data are subject to change.

Reporting through 04AUG2021

Henderson zip codes include 89002, 89011, 89012, 89014, 89015, 89044, 89052, 89074, 89119, 89120, 89122, 89123, 89124, 89183.

**Table 1: New COVID19 Cases and 7-Day Moving Average in Henderson, Previous Two Weeks**

| Date (Daily) | New Cases | 7-Day Moving Average |
|--------------|-----------|----------------------|
| 22JUL2021    | 187       | 174.71               |
| 23JUL2021    | 184       | 174.86               |
| 24JUL2021    | 142       | 175.14               |
| 25JUL2021    | 138       | 173.86               |
| 26JUL2021    | 211       | 177.14               |
| 27JUL2021    | 227       | 180.86               |
| 28JUL2021    | 174       | 180.43               |
| 29JUL2021    | 164       | 177.14               |
| 30JUL2021    | 153       | 172.71               |
| 31JUL2021    | 102       | 167.00               |
| 01AUG2021    | 92        | 160.43               |
| 02AUG2021    | 138       | 150.00               |

---

Note1: Event Date is calculated as follows based on completed information:  
1) Disease onset date 2) Disease diagnosis date 3) Lab result collection date 4) Report date to SNHD.

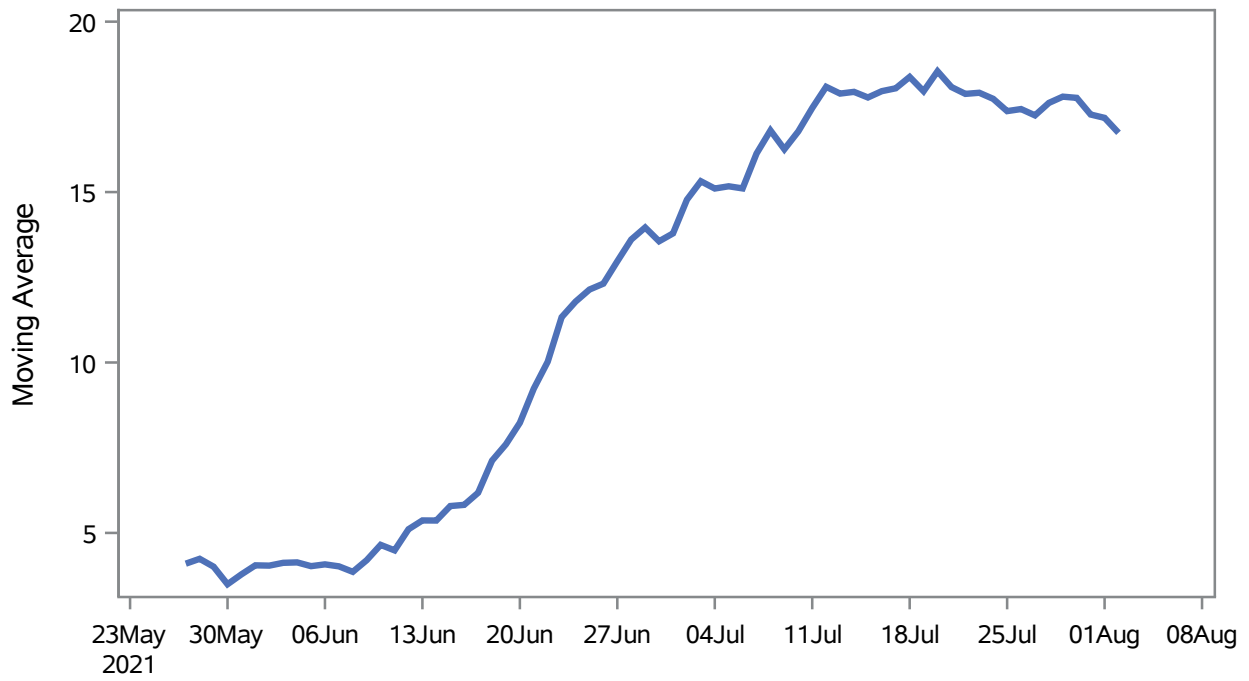
---

**Investigations are ongoing; data are subject to change.**

**Reporting through 04AUG2021**

**Henderson zip codes include 89002, 89011, 89012, 89014, 89015, 89044, 89052, 89074, 89119, 89120, 89122, 89123, 89124, 89183.**

### Percent of People Receiving COVID-19 Viral Tests Who Have Positive Results in Henderson



Investigations are ongoing; data are subject to change.

Reporting through 04AUG2021

Henderson zip codes include 89002, 89011, 89012, 89014, 89015, 89044, 89052, 89074, 89119, 89120, 89122, 89123, 89124, 89183.

**Table 2: Percent of People Receiving COVID-19 Viral Tests Who Have Positive Results in Henderson**

| Collection Date | Positive | Negative | Equivocal | Total | % Positivity | 7-Day Moving Average |
|-----------------|----------|----------|-----------|-------|--------------|----------------------|
| 19JUL2021       | 131      | 640      |           | 773   | 16.95        | 18.0                 |
| 20JUL2021       | 144      | 707      | 1         | 854   | 16.86        | 18.5                 |
| 21JUL2021       | 127      | 642      | 1         | 773   | 16.43        | 18.1                 |
| 22JUL2021       | 156      | 758      | 2         | 919   | 16.97        | 17.9                 |
| 23JUL2021       | 166      | 791      | 2         | 963   | 17.24        | 17.9                 |
| 24JUL2021       | 110      | 472      |           | 584   | 18.84        | 17.7                 |
| 25JUL2021       | 93       | 411      | 1         | 507   | 18.34        | 17.4                 |
| 26JUL2021       | 161      | 766      |           | 927   | 17.37        | 17.4                 |
| 27JUL2021       | 169      | 914      | 1         | 1086  | 15.56        | 17.3                 |
| 28JUL2021       | 166      | 705      |           | 874   | 18.99        | 17.6                 |
| 29JUL2021       | 159      | 709      |           | 871   | 18.25        | 17.8                 |
| 30JUL2021       | 157      | 764      |           | 924   | 16.99        | 17.8                 |
| 31JUL2021       | 84       | 459      |           | 545   | 15.41        | 17.3                 |
| 01AUG2021       | 83       | 384      |           | 470   | 17.66        | 17.2                 |
| 02AUG2021       | 122      | 729      |           | 853   | 14.30        | 16.7                 |

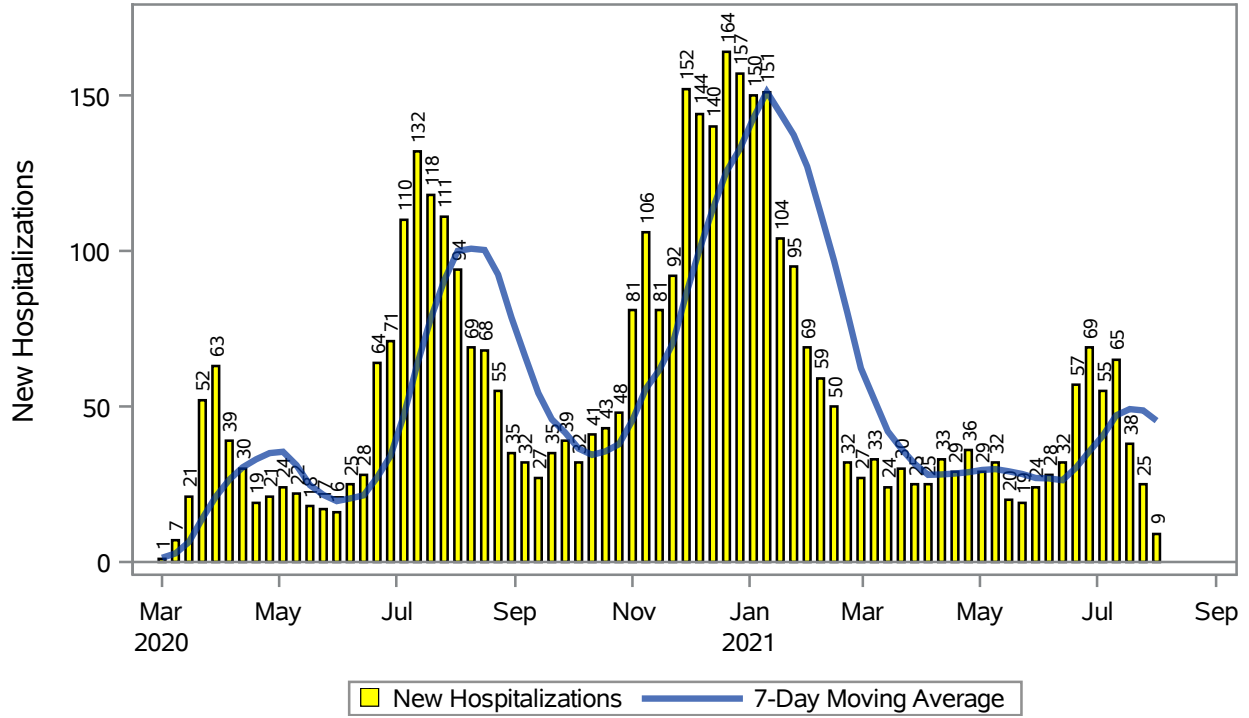
Note: Testing Data includes a 3 day delay

**Investigations are ongoing; data are subject to change.**

**Reporting through 04AUG2021**

**Henderson zip codes include 89002, 89011, 89012, 89014, 89015, 89044, 89052, 89074, 89119, 89120, 89122, 89123, 89124, 89183.**

### COVID19 Hospitalizations for Henderson, 7-Day Moving Average



Investigations are ongoing; data are subject to change.

Reporting through 04AUG2021

Henderson zip codes include 89002, 89011, 89012, 89014, 89015, 89044, 89052, 89074, 89119, 89120, 89122, 89123, 89124, 89183.

**Table 3: New COVID19-Related Hospitalizations and 7-Day Moving Average in Henderson, previous month**

| Week      | Hospitalizations | 7-Day Moving Average |
|-----------|------------------|----------------------|
| 11JUL2021 | 65               | 47.1                 |
| 18JUL2021 | 38               | 49.1                 |
| 25JUL2021 | 25               | 48.7                 |
| 01AUG2021 | 9                | 45.4                 |

---

Note1: Admission Date is calculated as follows based on completed information:  
A) COVID19 Case is hospitalized B) COVID19 Case has a hospital admission date.

If admission date is missing, then the following is substituted temporarily, in order:  
1) Disease onset date 2) Disease diagnosis date 3) Lab result collection date 4) Report date to SNHD.

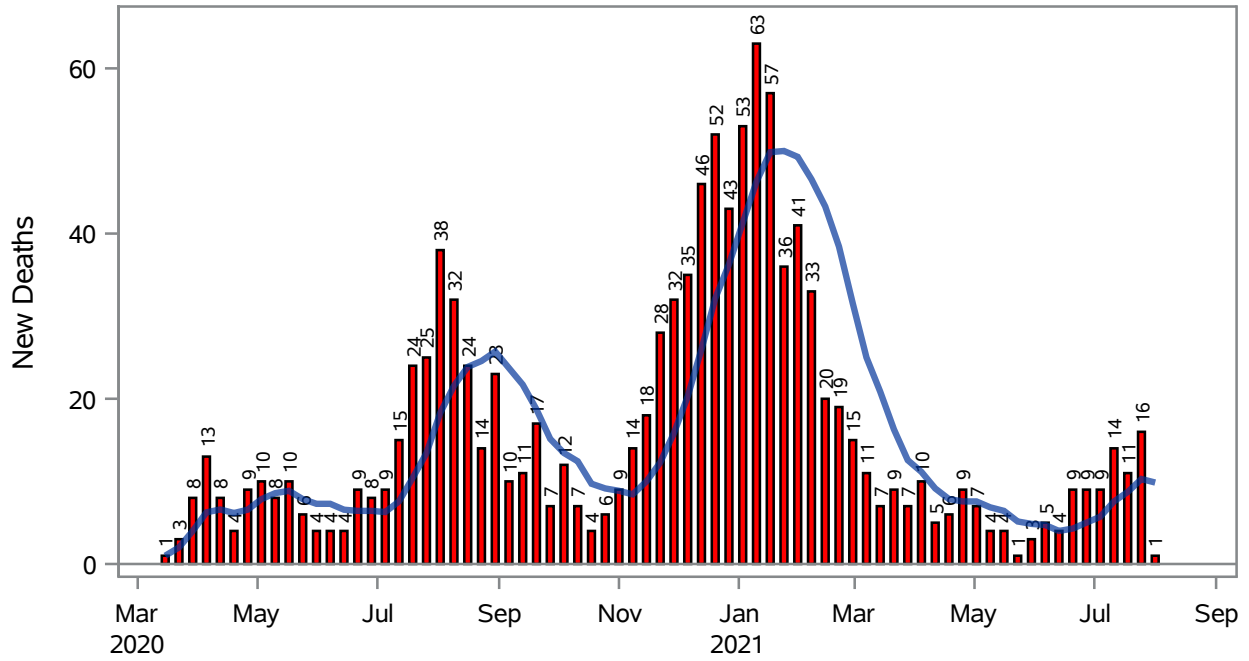
---

**Investigations are ongoing; data are subject to change.**

**Reporting through 04AUG2021**

**Henderson zip codes include 89002, 89011, 89012, 89014, 89015, 89044, 89052, 89074, 89119, 89120, 89122, 89123, 89124, 89183.**

### COVID19 Deaths for Henderson, 7-Day Moving Average



■ New Deaths    — 7-Day Moving Average

Investigations are ongoing; data are subject to change.

Reporting through 04AUG2021

Henderson zip codes include 89002, 89011, 89012, 89014, 89015, 89044, 89052, 89074, 89119, 89120, 89122, 89123, 89124, 89183.

**Table 4: New COVID19-Related Deaths and 7-Day Moving Average in Henderson, Previous Month**

| Week      | Deaths | 7-Day Moving Average |
|-----------|--------|----------------------|
| 11JUL2021 | 14     | 7.57                 |
| 18JUL2021 | 11     | 8.71                 |
| 25JUL2021 | 16     | 10.3                 |
| 01AUG2021 | 1      | 9.86                 |

---

Note1: Date of Death is calculated as follows based on completed information:  
A) COVID19 Case is reported as deceased B) COVID19 Case has a reported date of death.

If date of death is missing, then the following is substituted temporarily, in order:  
1) Disease onset date 2) Disease diagnosis date  
3) Lab result collection date 4) Report date to SNHD.

---

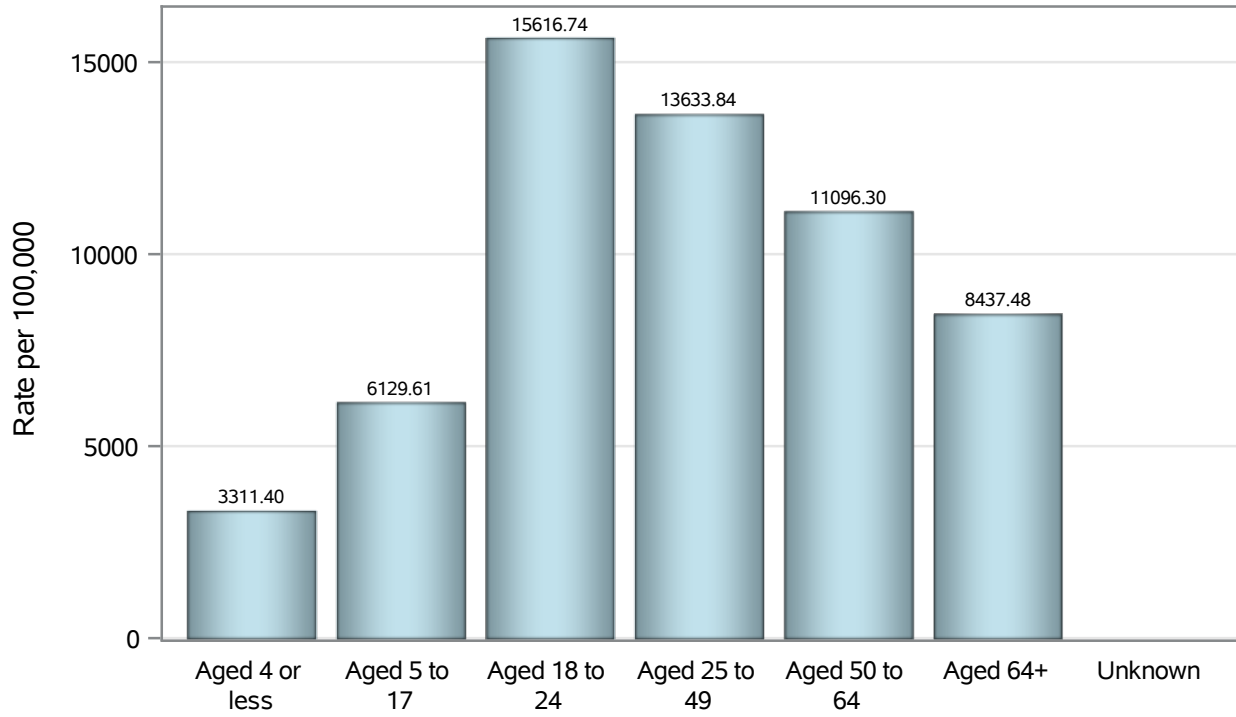
**Investigations are ongoing; data are subject to change.**

**Reporting through 04AUG2021**

**Henderson zip codes include 89002, 89011, 89012, 89014, 89015, 89044, 89052, 89074, 89119, 89120, 89122, 89123, 89124, 89183.**



### Case Age Rates in Henderson

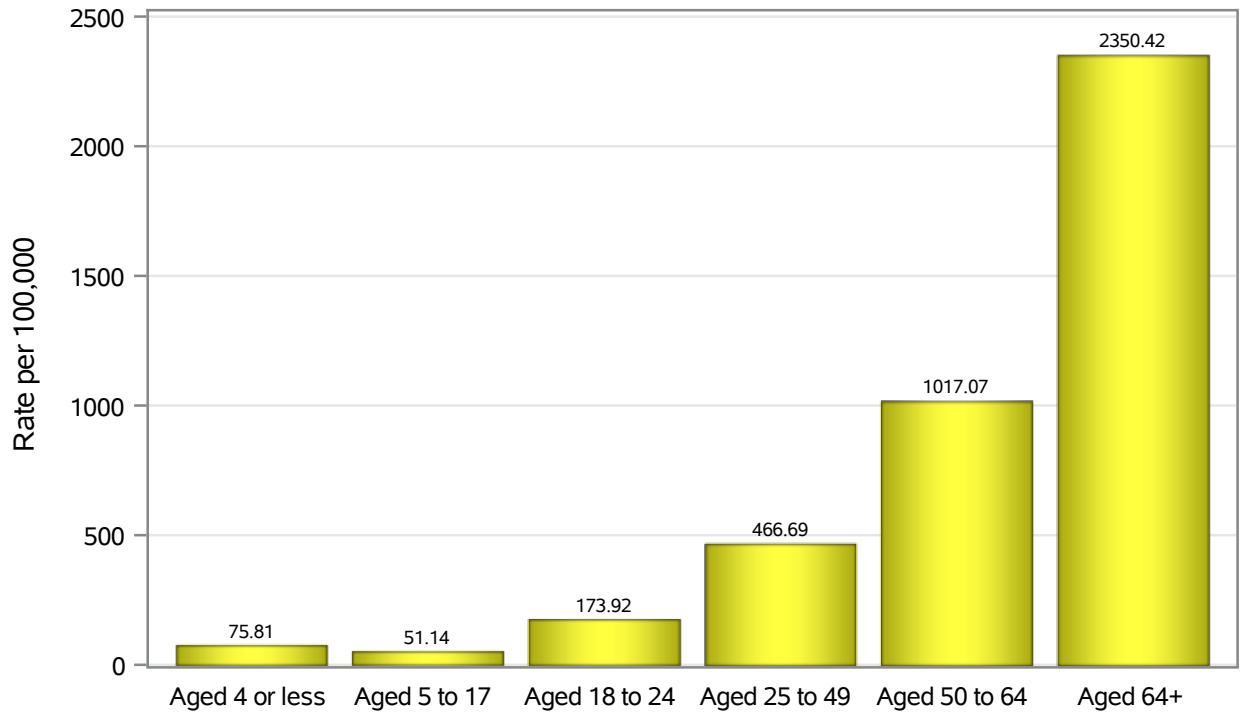


Investigations are ongoing; data are subject to change.

Reporting through 04AUG2021

Henderson zip codes include 89002, 89011, 89012, 89014, 89015, 89044, 89052, 89074, 89119, 89120, 89122, 89123, 89124, 89183.

### Hospitalization Age Rates in Henderson

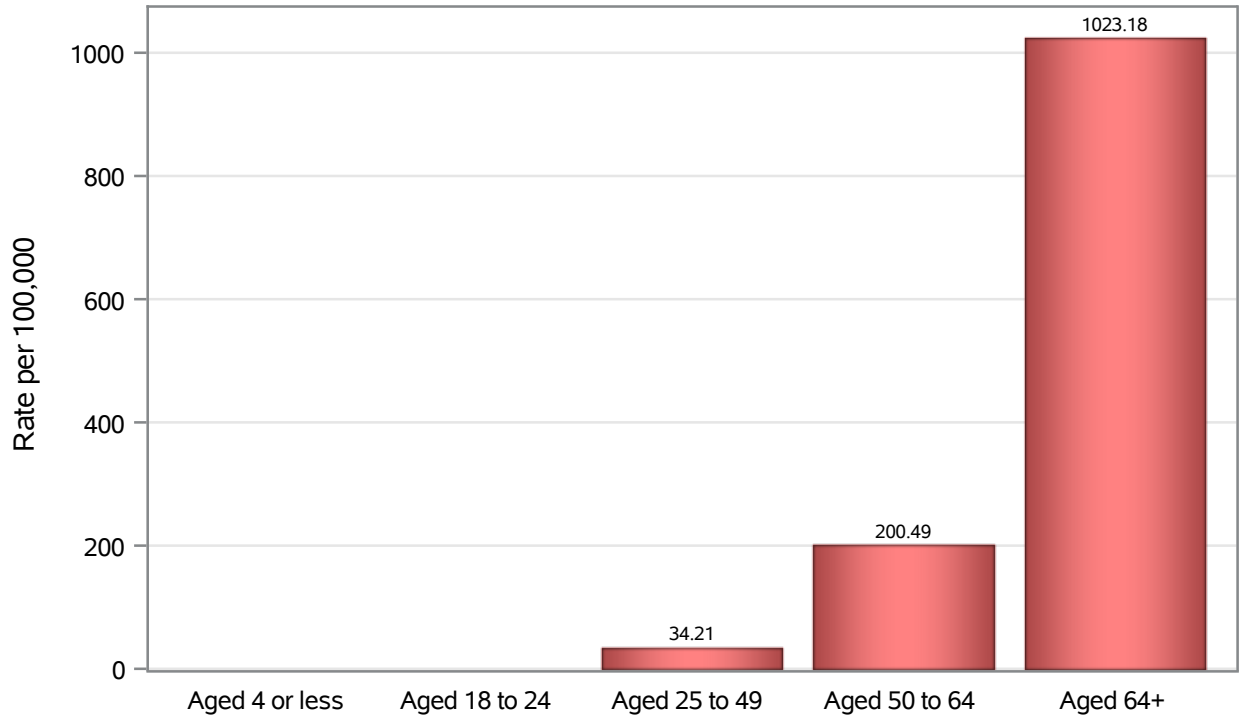


Investigations are ongoing; data are subject to change.

Reporting through 04AUG2021

Henderson zip codes include 89002, 89011, 89012, 89014, 89015, 89044, 89052, 89074, 89119, 89120, 89122, 89123, 89124, 89183.

### Death Age Rates in Henderson



Investigations are ongoing; data are subject to change.

Reporting through 04AUG2021

Henderson zip codes include 89002, 89011, 89012, 89014, 89015, 89044, 89052, 89074, 89119, 89120, 89122, 89123, 89124, 89183.

**Table 5: Age and COVID19 in Henderson**

| Case Status      | Age Categories | N     | %    | Population | Rate per 100,000 |
|------------------|----------------|-------|------|------------|------------------|
| Cases            | Aged 4 or less | 961   | 1.7  | 29,021     | 3311.4           |
|                  | Aged 5 to 17   | 5034  | 8.8  | 82,126     | 6129.6           |
|                  | Aged 18 to 24  | 6914  | 12.1 | 44,273     | 15617            |
|                  | Aged 25 to 49  | 25504 | 44.6 | 187064     | 13634            |
|                  | Aged 50 to 64  | 11401 | 20.0 | 102746     | 11096            |
|                  | Aged 64+       | 7298  | 12.8 | 86,495     | 8437.5           |
|                  | Unknown        | 12    | 0.0  | .          | .                |
| Hospitalizations | Aged 4 or less | 22    | 0.5  | 29,021     | 75.81            |
|                  | Aged 5 to 17   | 42    | 1.0  | 82,126     | 51.14            |
|                  | Aged 18 to 24  | 77    | 1.9  | 44,273     | 173.92           |
|                  | Aged 25 to 49  | 873   | 21.3 | 187064     | 466.69           |
|                  | Aged 50 to 64  | 1045  | 25.5 | 102746     | 1017.1           |
|                  | Aged 64+       | 2033  | 49.7 | 86,495     | 2350.4           |
| Deaths           | Aged 4 or less | 1     | 0.1  | 29,021     | .                |
|                  | Aged 18 to 24  | 1     | 0.1  | 44,273     | .                |
|                  | Aged 25 to 49  | 64    | 5.5  | 187064     | 34.21            |
|                  | Aged 50 to 64  | 206   | 17.8 | 102746     | 200.49           |
|                  | Aged 64+       | 885   | 76.5 | 86,495     | 1023.2           |

Note1: Population data source for calculating rate estimates: U.S. Census Bureau, ACS 5-year estimate.

Note2: Rates for categories with fewer than 12 cases are suppressed due to high relative standard error.

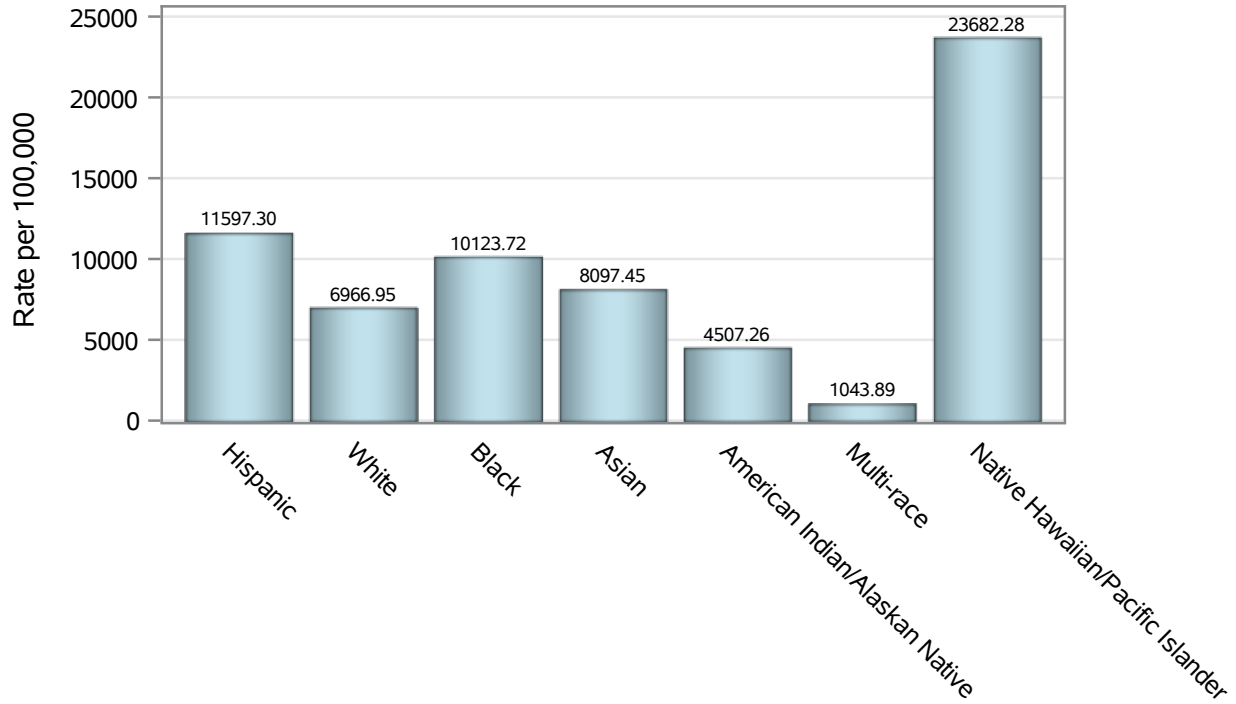
Note3: Hospitalizations are regardless of deceased status; Deaths are regardless of hospitalization status

**Investigations are ongoing; data are subject to change.**

**Reporting through 04AUG2021**

**Henderson zip codes include 89002, 89011, 89012, 89014, 89015, 89044, 89052, 89074, 89119, 89120, 89122, 89123, 89124, 89183.**

### Case Race/Ethnicity Rates in Henderson

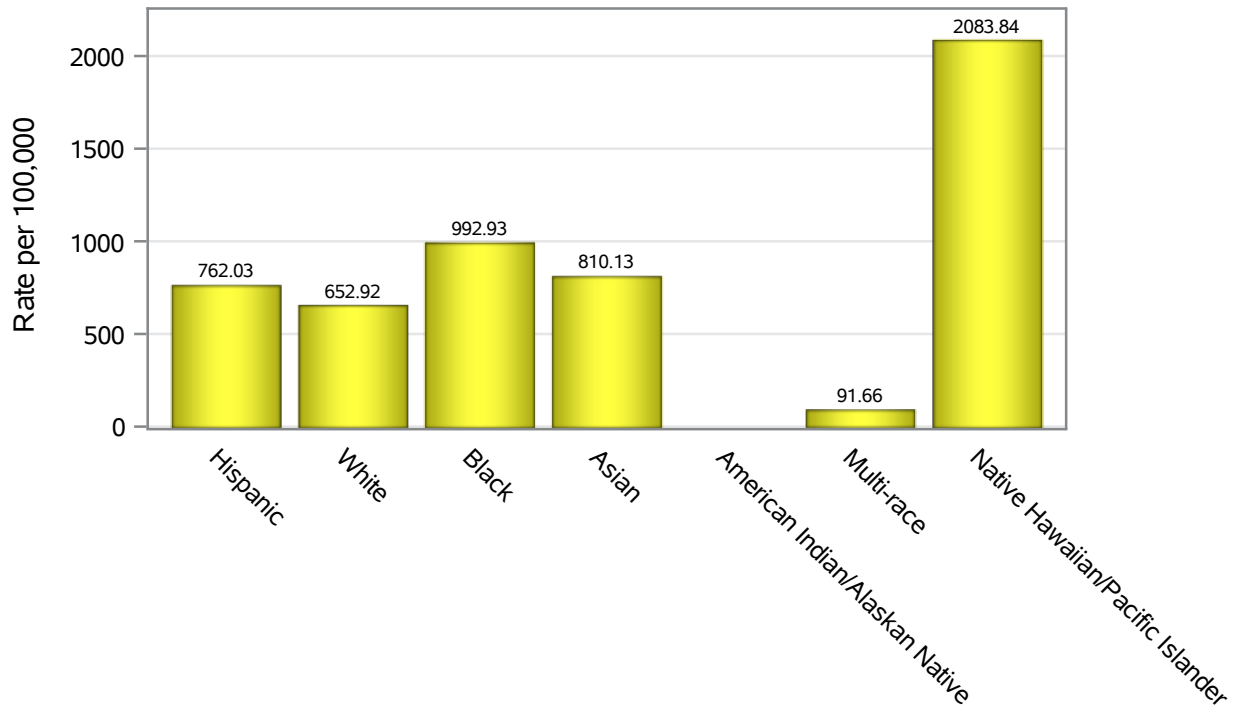


Investigations are ongoing; data are subject to change.

Reporting through 04AUG2021

Henderson zip codes include 89002, 89011, 89012, 89014, 89015, 89044, 89052, 89074, 89119, 89120, 89122, 89123, 89124, 89183.

### Hospitalization Race/Ethnicity Rates in Henderson

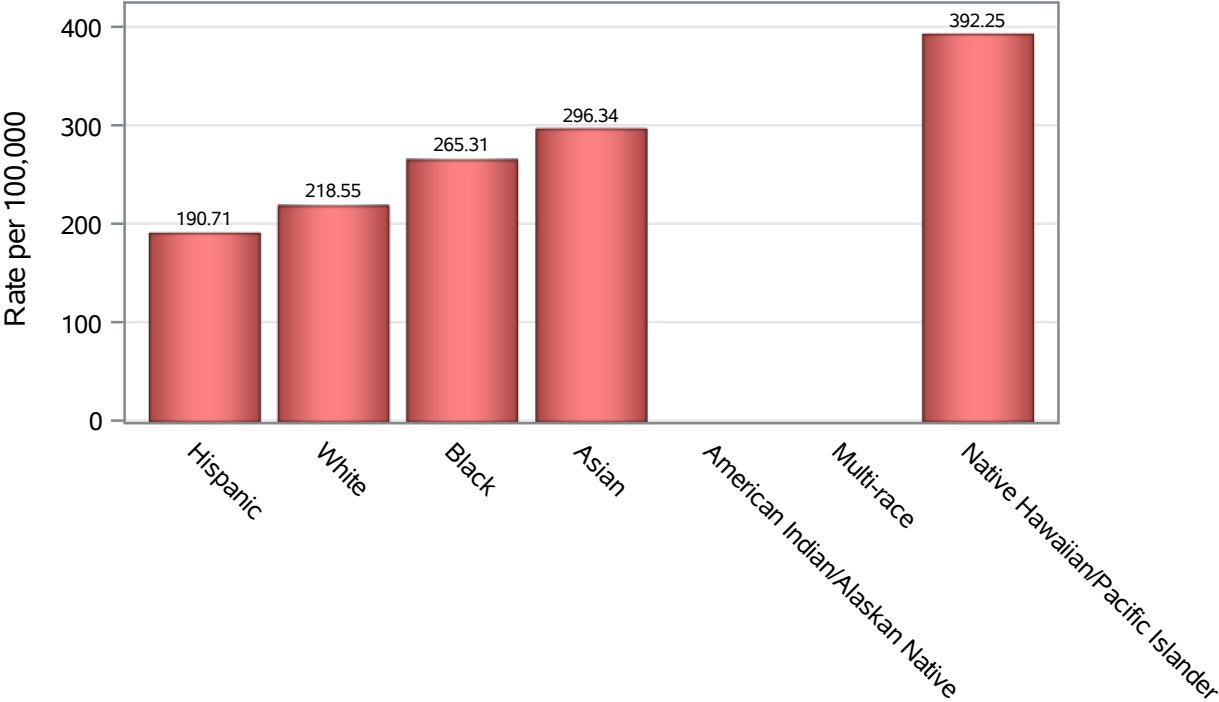


Investigations are ongoing; data are subject to change.

Reporting through 04AUG2021

Henderson zip codes include 89002, 89011, 89012, 89014, 89015, 89044, 89052, 89074, 89119, 89120, 89122, 89123, 89124, 89183.

### Death Race/Ethnicity Rates in Henderson



Investigations are ongoing; data are subject to change.

Reporting through 04AUG2021

Henderson zip codes include 89002, 89011, 89012, 89014, 89015, 89044, 89052, 89074, 89119, 89120, 89122, 89123, 89124, 89183.

**Table 6: Race/Ethnicity and COVID19 in Henderson**

| Case Status      | Race Ethnicity Categories        | N     | %    | Population | Rate per 100,000 |
|------------------|----------------------------------|-------|------|------------|------------------|
| Cases            | Hispanic                         | 14108 | 24.7 | 121649     | 11597            |
|                  | White                            | 20306 | 35.5 | 291462     | 6966.9           |
|                  | Black                            | 3854  | 6.7  | 38,069     | 10124            |
|                  | Asian                            | 4208  | 7.4  | 51,967     | 8097.4           |
|                  | American Indian/Alaskan Native   | 118   | 0.2  | 2,618      | 4507.3           |
|                  | Multi-race                       | 205   | 0.4  | 19,638     | 1043.9           |
|                  | Native Hawaiian/Pacific Islander | 966   | 1.7  | 4,079      | 23682            |
|                  | Unknown                          | 13359 | 23.4 | .          | .                |
| Hospitalizations | Hispanic                         | 927   | 22.7 | 121649     | 762.03           |
|                  | White                            | 1903  | 46.5 | 291462     | 652.92           |
|                  | Black                            | 378   | 9.2  | 38,069     | 992.93           |
|                  | Asian                            | 421   | 10.3 | 51,967     | 810.13           |
|                  | American Indian/Alaskan Native   | 6     | 0.1  | 2,618      | .                |
|                  | Multi-race                       | 18    | 0.4  | 19,638     | 91.66            |
|                  | Native Hawaiian/Pacific Islander | 85    | 2.1  | 4,079      | 2083.8           |
|                  | Unknown                          | 354   | 8.7  | .          | .                |
| Deaths           | Hispanic                         | 232   | 20.1 | 121649     | 190.71           |
|                  | White                            | 637   | 55.1 | 291462     | 218.55           |
|                  | Black                            | 101   | 8.7  | 38,069     | 265.31           |
|                  | Asian                            | 154   | 13.3 | 51,967     | 296.34           |
|                  | American Indian/Alaskan Native   | 2     | 0.2  | 2,618      | .                |
|                  | Multi-race                       | 6     | 0.5  | 19,638     | .                |
|                  | Native Hawaiian/Pacific Islander | 16    | 1.4  | 4,079      | 392.25           |
|                  | Unknown                          | 9     | 0.8  | .          | .                |

Note1: Population data source for calculating rate estimates: U.S. Census Bureau, ACS 5-year estimate.

Note2: Rates for categories with fewer than 12 cases are suppressed due to high relative standard error.

Note3: Hospitalizations are regardless of deceased status; Deaths are regardless of hospitalization status

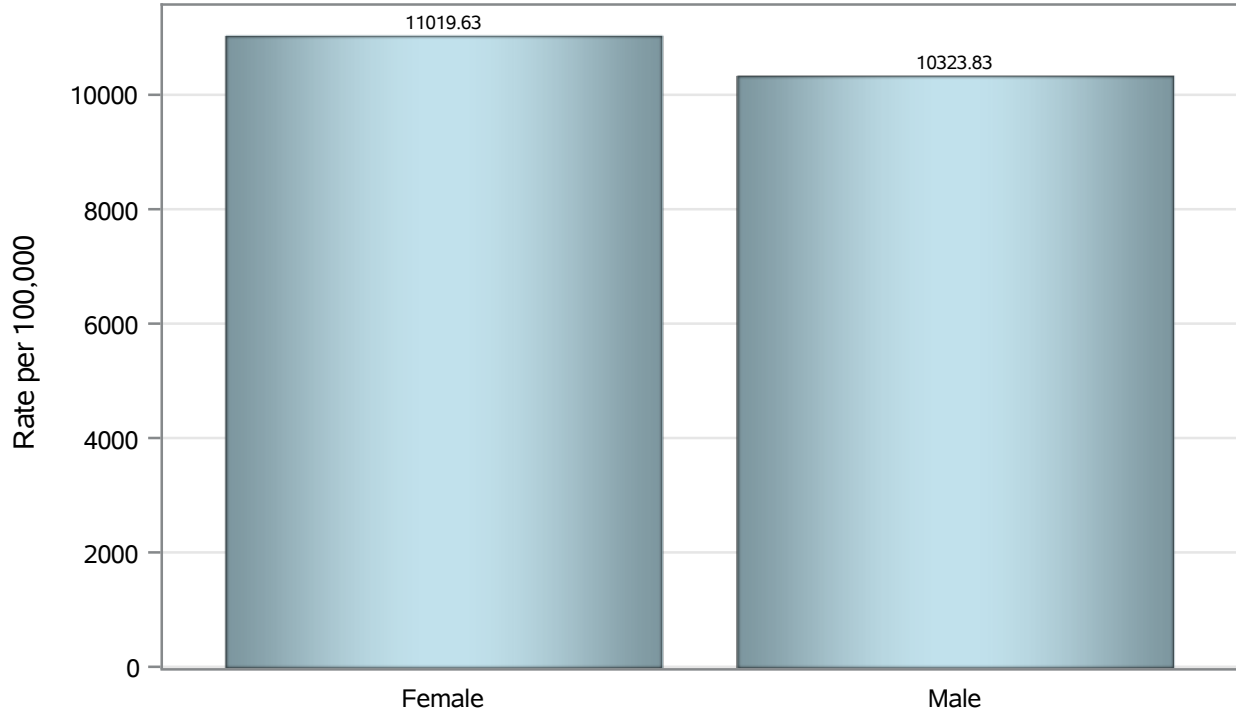
**Investigations are ongoing; data are subject to change.**

**Reporting through 04AUG2021**

**Henderson zip codes include 89002, 89011, 89012, 89014, 89015, 89044, 89052, 89074, 89119, 89120, 89122, 89123, 89124, 89183.**



### Case Birth Sex Rates in Henderson

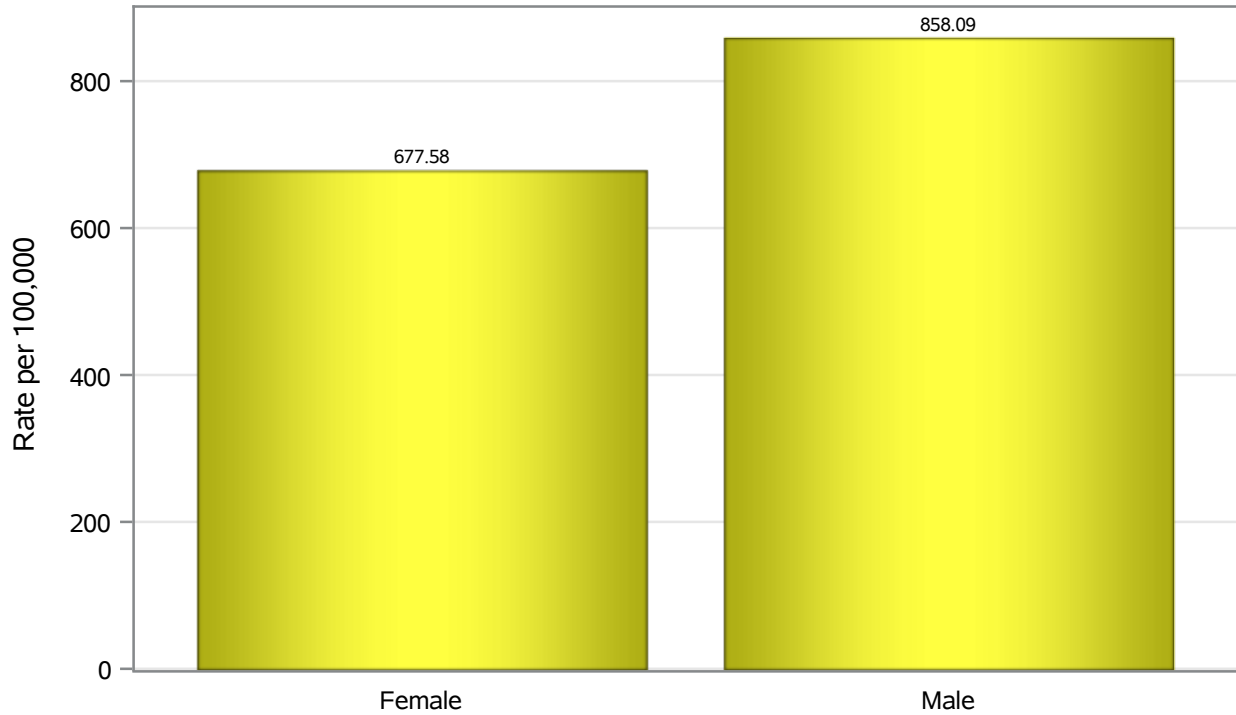


Investigations are ongoing; data are subject to change.

Reporting through 04AUG2021

Henderson zip codes include 89002, 89011, 89012, 89014, 89015, 89044, 89052, 89074, 89119, 89120, 89122, 89123, 89124, 89183.

### Hospitalization Birth Sex Rates in Henderson

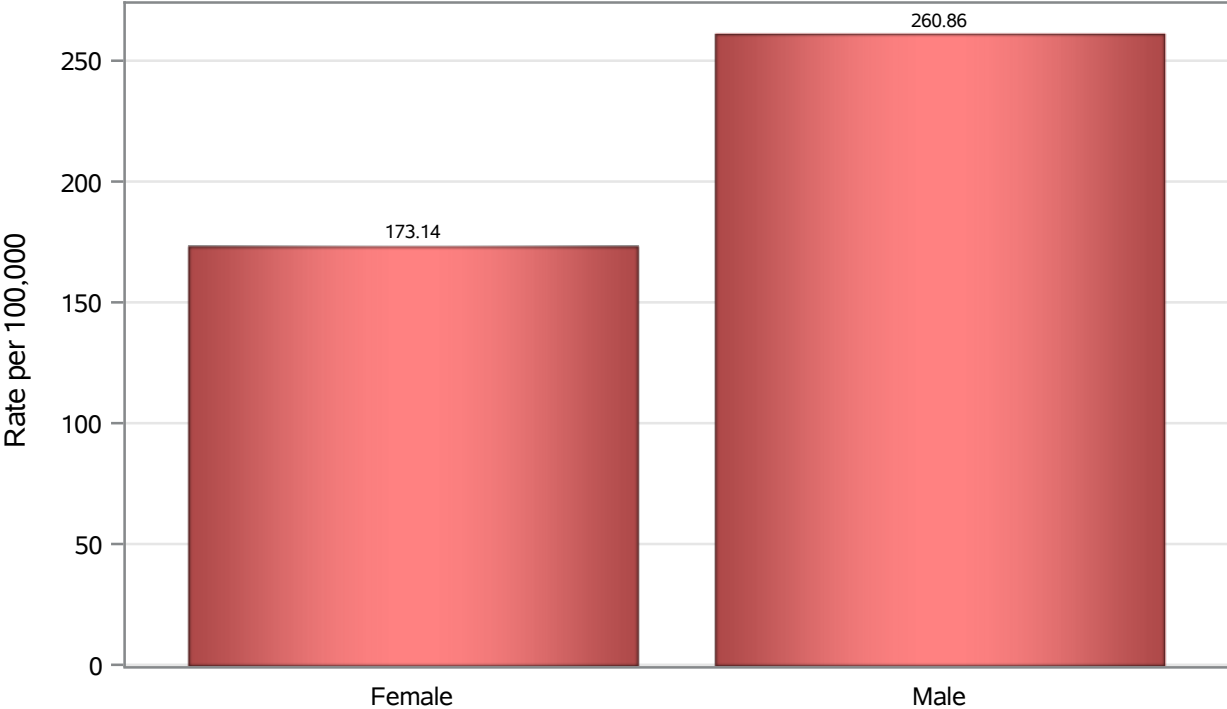


Investigations are ongoing; data are subject to change.

Reporting through 04AUG2021

Henderson zip codes include 89002, 89011, 89012, 89014, 89015, 89044, 89052, 89074, 89119, 89120, 89122, 89123, 89124, 89183.

**Death Birth Sex Rates in Henderson**



Investigations are ongoing; data are subject to change.  
Reporting through 04AUG2021

Henderson zip codes include 89002, 89011, 89012, 89014, 89015, 89044, 89052, 89074, 89119, 89120, 89122, 89123, 89124, 89183.

**Table 7: Birth Sex and COVID19 in Henderson**

| Case Status      | Birth Sex Categories | N     | %    | Population | Rate per 100,000 |
|------------------|----------------------|-------|------|------------|------------------|
| Cases            | Female               | 29404 | 51.5 | 266833     | 11020            |
|                  | Male                 | 27347 | 47.9 | 264892     | 10324            |
|                  | Unknown              | 373   | 0.7  | .          | .                |
| Hospitalizations | Female               | 1808  | 44.2 | 266833     | 677.58           |
|                  | Male                 | 2273  | 55.5 | 264892     | 858.09           |
|                  | Unknown              | 11    | 0.3  | .          | .                |
| Deaths           | Female               | 462   | 39.9 | 266833     | 173.14           |
|                  | Male                 | 691   | 59.7 | 264892     | 260.86           |
|                  | Unknown              | 4     | 0.3  | .          | .                |

Note1: Population data source for calculating rate estimates: U.S. Census Bureau, ACS 5-year estimate.

Note2: Rates for categories with fewer than 12 cases are suppressed due to high relative standard error.

Note3: Hospitalizations are regardless of deceased status; Deaths are regardless of hospitalization status

**Investigations are ongoing; data are subject to change.**

**Reporting through 04AUG2021**

**Henderson zip codes include 89002, 89011, 89012, 89014, 89015, 89044, 89052, 89074, 89119, 89120, 89122, 89123, 89124, 89183.**