

# COVID-19 Trends

Clark County, Nevada

Document creation date: August 30, 2021

- General notes: This report uses surveillance data collected by the Southern Nevada Health District. Due to delays related to laboratory processing, reporting, and case investigations, data from the most recent days are less complete than data from older time points. For this reason, as of June 10, 2020 this report will not display data from the previous three days prior to the date that the report was created. As many case investigations are ongoing, all data presented in this report are considered preliminary and subject to change. Data regarding cases, hospitalizations, deaths, and labs were last updated August 30, 2021 at 12:00 AM, and data is reported up through August 26, 2021.
- Cases: Symptom onset date was used for aggregating cases. If symptom onset date was missing, the following dates were substituted in this order: diagnosis date, lab collection date, report date (date case was reported to SNHD), event creation date (date case was entered into TriSano, SNHD's surveillance system).
- Hospitalizations: Admission date was used for aggregating hospitalizations. If admission date was missing, report date was substituted. If a person had more than one hospitalization after his/her COVID-19 diagnosis, only the first admission date was used.
- Deaths: Date of death was used for aggregating deaths. If date of death was missing, report date was used.
- For the "7-Day Average of Daily New Cases per 100K, by Age Group (Years)" graph and table, the population data source for calculating rate estimates was from Nevada State Demographer "2019 ASRHO Estimates and Projections Summary 2000 to 2038", 2020 projection, vintage 2019. Rates for individual age categories may be based on small numbers, which may give unstable estimates.
- All graphs in this report show data from approximately 60 days prior to the date of the report.
- All tables show data from the last 14 days before the current date, with the exception of the "Percent Change in Weekly Totals from Previous Week", which displays data from the previous eight completed weeks.
- For the "Percent of People Receiving COVID-19 Viral Tests Who Have Positive Results" graph, one person who has multiple specimens collected in one day is only reported once. If any test of that person is positive, that person counts as a positive result. If all tests of that individual are negative, that person counts as a negative result. Laboratory tests were included if they were a test assessing for the presence of SARS-CoV-2 viral RNA, for example PCR tests. Antibody tests were excluded.

# COVID-19 Cases

Clark County, NV

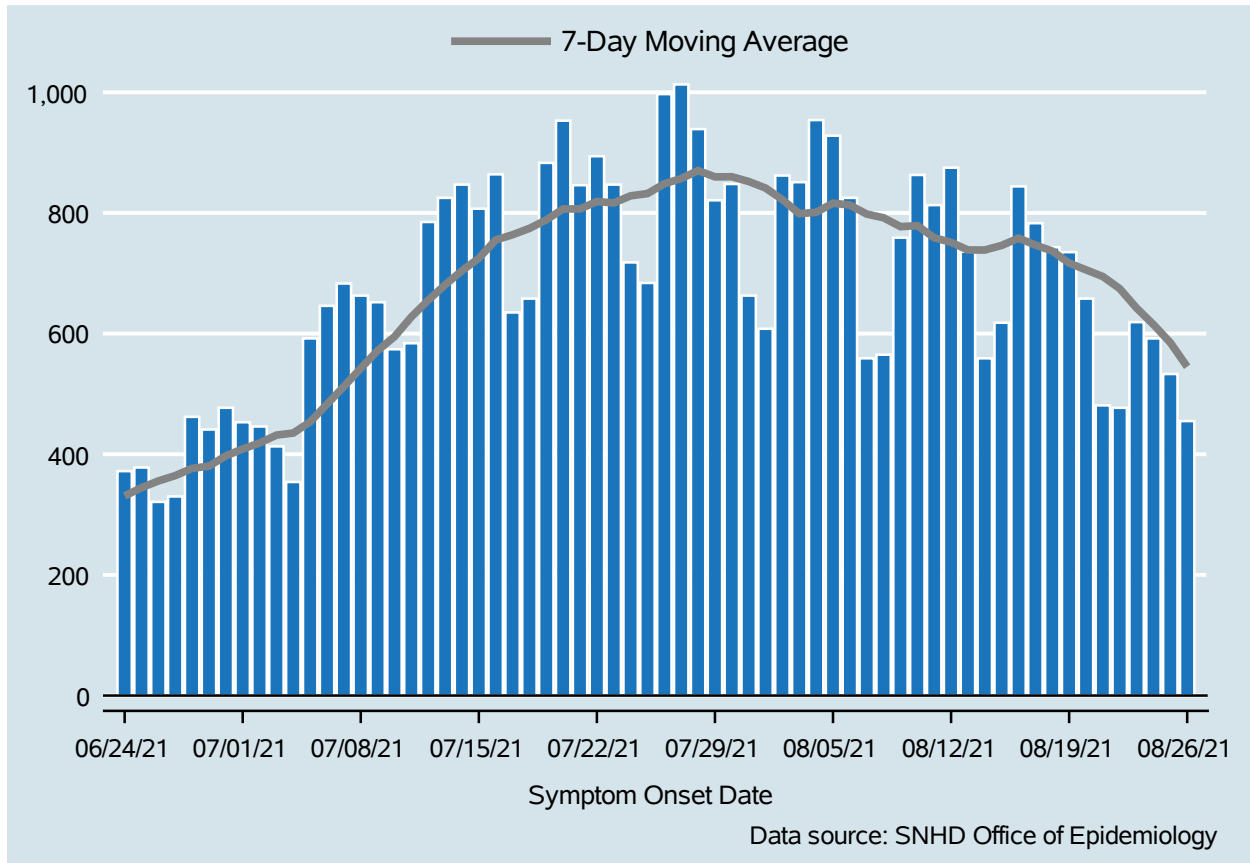


Table 1: COVID-19 Cases per Day, Clark County, NV

Date	Cases Per Day	7-Day Moving Average
Aug 13	736	738.6
Aug 14	559	738.6
Aug 15	618	746.1
Aug 16	844	758.3
Aug 17	783	746.9
Aug 18	743	736.9
Aug 19	735	716.9
Aug 20	658	705.7
Aug 21	481	694.6
Aug 22	477	674.4
Aug 23	619	642.3
Aug 24	592	615.0
Aug 25	533	585.0
Aug 26	455	545.0

# COVID-19 Hospitalizations

Clark County, NV

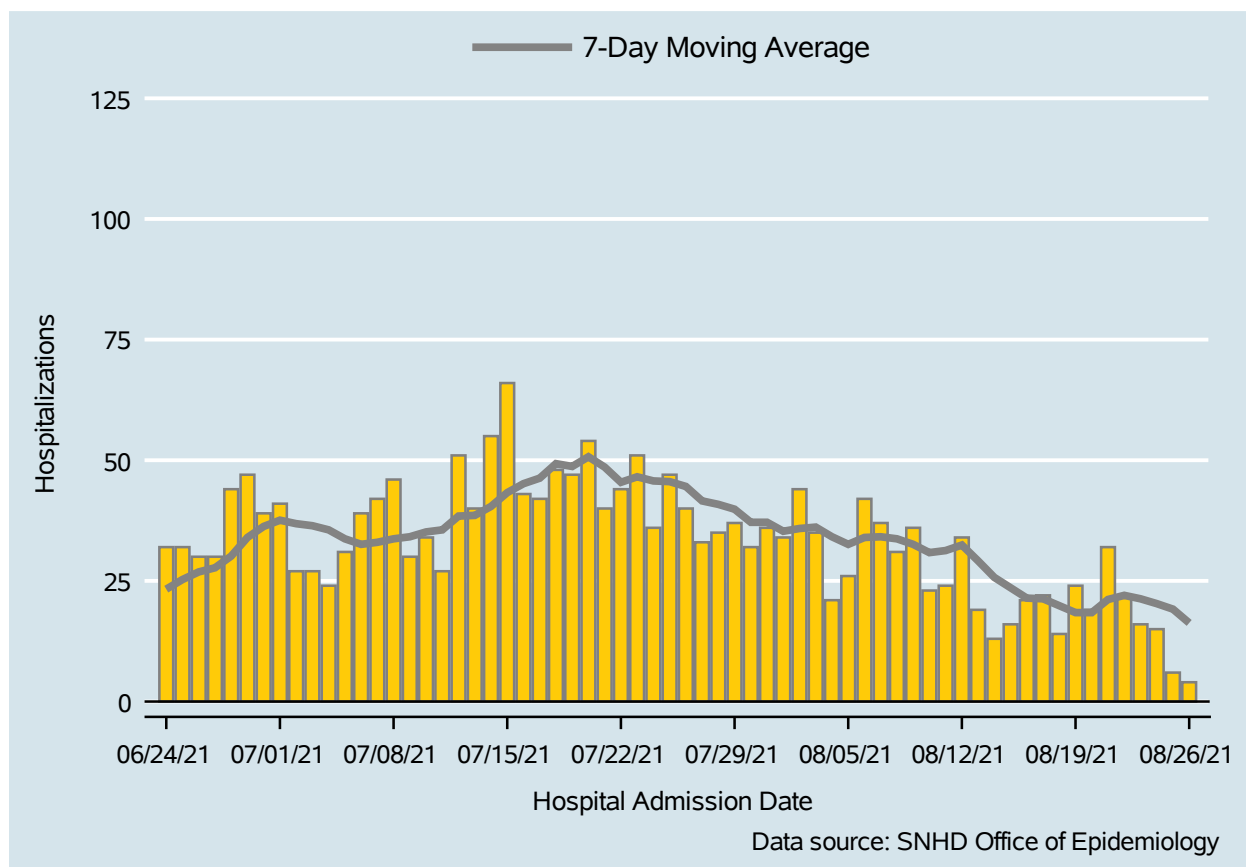


Table 2: COVID-19 Hospitalizations per Day, Clark County, NV

Date	Hospitalizations Per Day	7-Day Moving Average
Aug 13	19	29.1
Aug 14	13	25.7
Aug 15	16	23.6
Aug 16	21	21.4
Aug 17	22	21.3
Aug 18	14	19.9
Aug 19	24	18.4
Aug 20	19	18.4
Aug 21	32	21.1
Aug 22	22	22.0
Aug 23	16	21.3
Aug 24	15	20.3
Aug 25	6	19.1
Aug 26	4	16.3

# COVID-19 Deaths

Clark County, NV

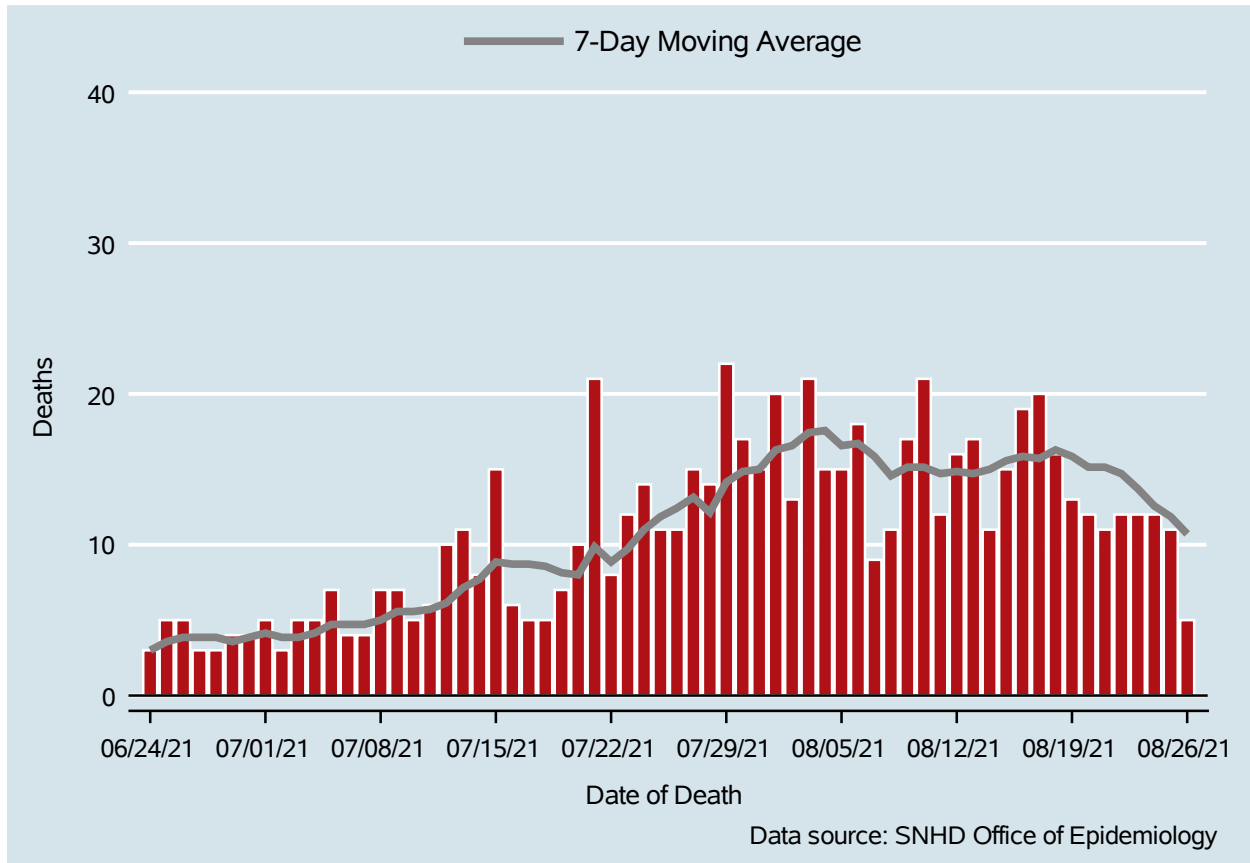


Table 3: COVID-19 Deaths per Day, Clark County, NV

Date	Deaths Per Day	7-Day Moving Average
Aug 13	17	14.7
Aug 14	11	15.0
Aug 15	15	15.6
Aug 16	19	15.9
Aug 17	20	15.7
Aug 18	16	16.3
Aug 19	13	15.9
Aug 20	12	15.1
Aug 21	11	15.1
Aug 22	12	14.7
Aug 23	12	13.7
Aug 24	12	12.6
Aug 25	11	11.9
Aug 26	5	10.7

## 7-Day Average of Daily New Cases per 100K, by Age Group (Years)

Clark County, NV

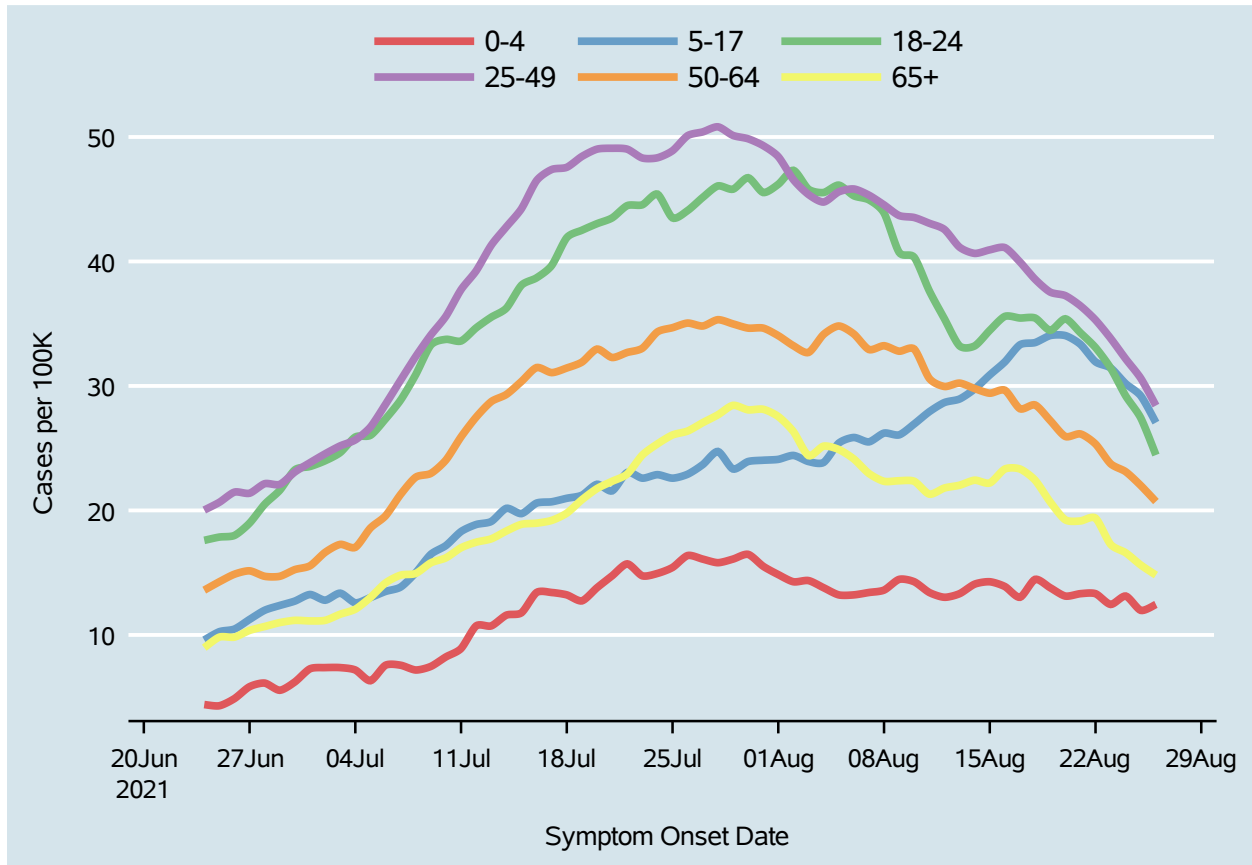
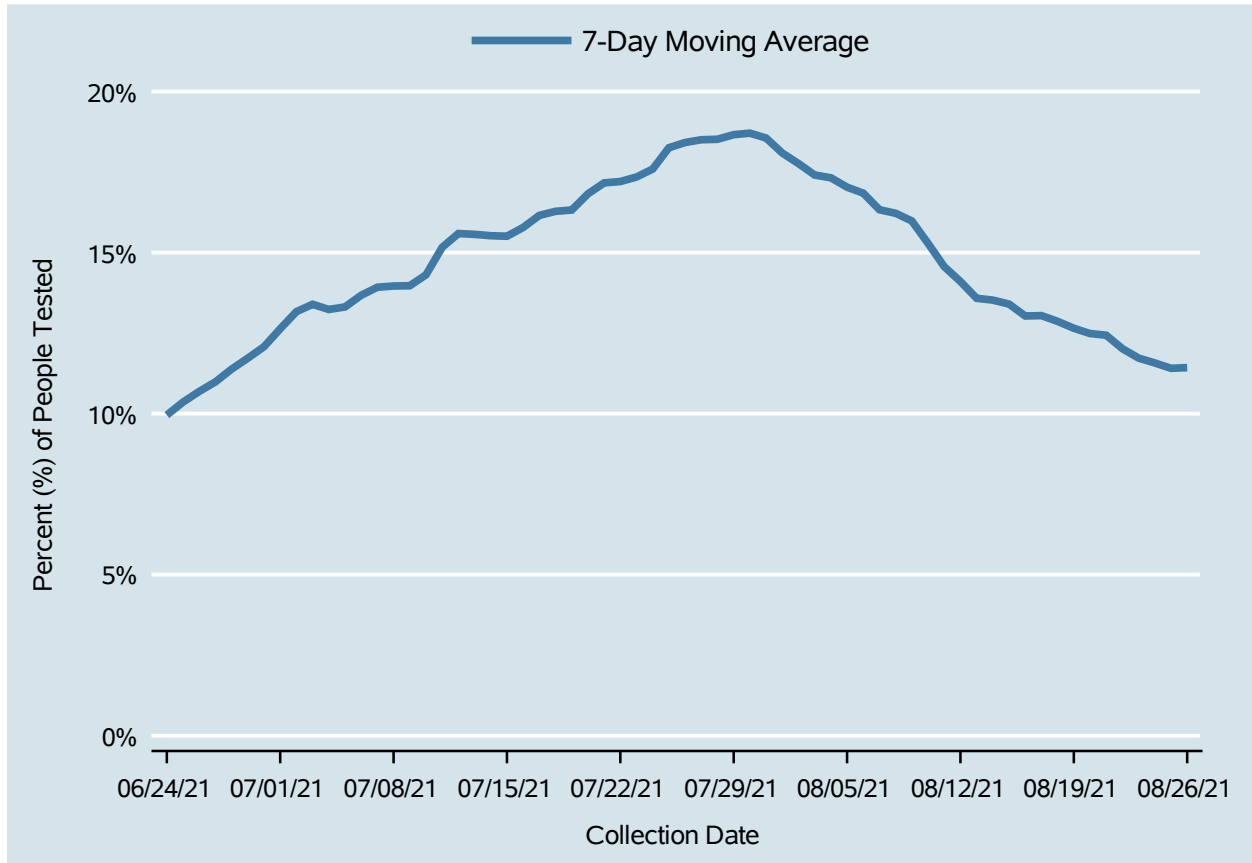


Table 4: 7-Day Average of Daily New Cases per 100K, by Age Group (Years)

Date	0-4	5-17	18-24	25-49	50-64	65+
Aug 13	13.3	29.0	33.2	41.1	30.2	22.0
Aug 14	14.1	29.8	33.2	40.6	29.8	22.4
Aug 15	14.3	30.9	34.5	40.9	29.4	22.2
Aug 16	13.9	31.9	35.6	41.1	29.7	23.3
Aug 17	13.0	33.3	35.5	40.0	28.2	23.3
Aug 18	14.5	33.5	35.5	38.6	28.5	22.4
Aug 19	13.8	34.0	34.5	37.5	27.2	20.7
Aug 20	13.1	34.0	35.4	37.3	25.9	19.2
Aug 21	13.3	33.3	34.3	36.4	26.1	19.2
Aug 22	13.3	31.9	33.1	35.3	25.3	19.4
Aug 23	12.5	31.4	31.4	33.8	23.7	17.3
Aug 24	13.1	30.2	29.2	32.2	23.1	16.6
Aug 25	12.0	29.2	27.4	30.6	22.0	15.6
Aug 26	12.5	27.1	24.5	28.4	20.7	14.8

## Percent of People Receiving COVID-19 Viral Tests Who Have Positive Results

Clark County, NV



*Report prepared by: Kellie Watkins, PhD, MS, Ying Zhang, PhD, MPH (Office of Epidemiology) and Lei Zhang, MS (Office of Informatics)*