

COVID-19 Trends

Clark County, Nevada

Document creation date: August 29, 2021

- General notes: This report uses surveillance data collected by the Southern Nevada Health District. Due to delays related to laboratory processing, reporting, and case investigations, data from the most recent days are less complete than data from older time points. For this reason, as of June 10, 2020 this report will not display data from the previous three days prior to the date that the report was created. As many case investigations are ongoing, all data presented in this report are considered preliminary and subject to change. Data regarding cases, hospitalizations, deaths, and labs were last updated August 29, 2021 at 12:00 AM, and data is reported up through August 25, 2021.
- Cases: Symptom onset date was used for aggregating cases. If symptom onset date was missing, the following dates were substituted in this order: diagnosis date, lab collection date, report date (date case was reported to SNHD), event creation date (date case was entered into TriSano, SNHD's surveillance system).
- Hospitalizations: Admission date was used for aggregating hospitalizations. If admission date was missing, report date was substituted. If a person had more than one hospitalization after his/her COVID-19 diagnosis, only the first admission date was used.
- Deaths: Date of death was used for aggregating deaths. If date of death was missing, report date was used.
- For the "7-Day Average of Daily New Cases per 100K, by Age Group (Years)" graph and table, the population data source for calculating rate estimates was from Nevada State Demographer "2019 ASRHO Estimates and Projections Summary 2000 to 2038", 2020 projection, vintage 2019. Rates for individual age categories may be based on small numbers, which may give unstable estimates.
- All graphs in this report show data from approximately 60 days prior to the date of the report.
- All tables show data from the last 14 days before the current date, with the exception of the "Percent Change in Weekly Totals from Previous Week", which displays data from the previous eight completed weeks.
- For the "Percent of People Receiving COVID-19 Viral Tests Who Have Positive Results" graph, one person who has multiple specimens collected in one day is only reported once. If any test of that person is positive, that person counts as a positive result. If all tests of that individual are negative, that person counts as a negative result. Laboratory tests were included if they were a test assessing for the presence of SARS-CoV-2 viral RNA, for example PCR tests. Antibody tests were excluded.

COVID-19 Cases

Clark County, NV

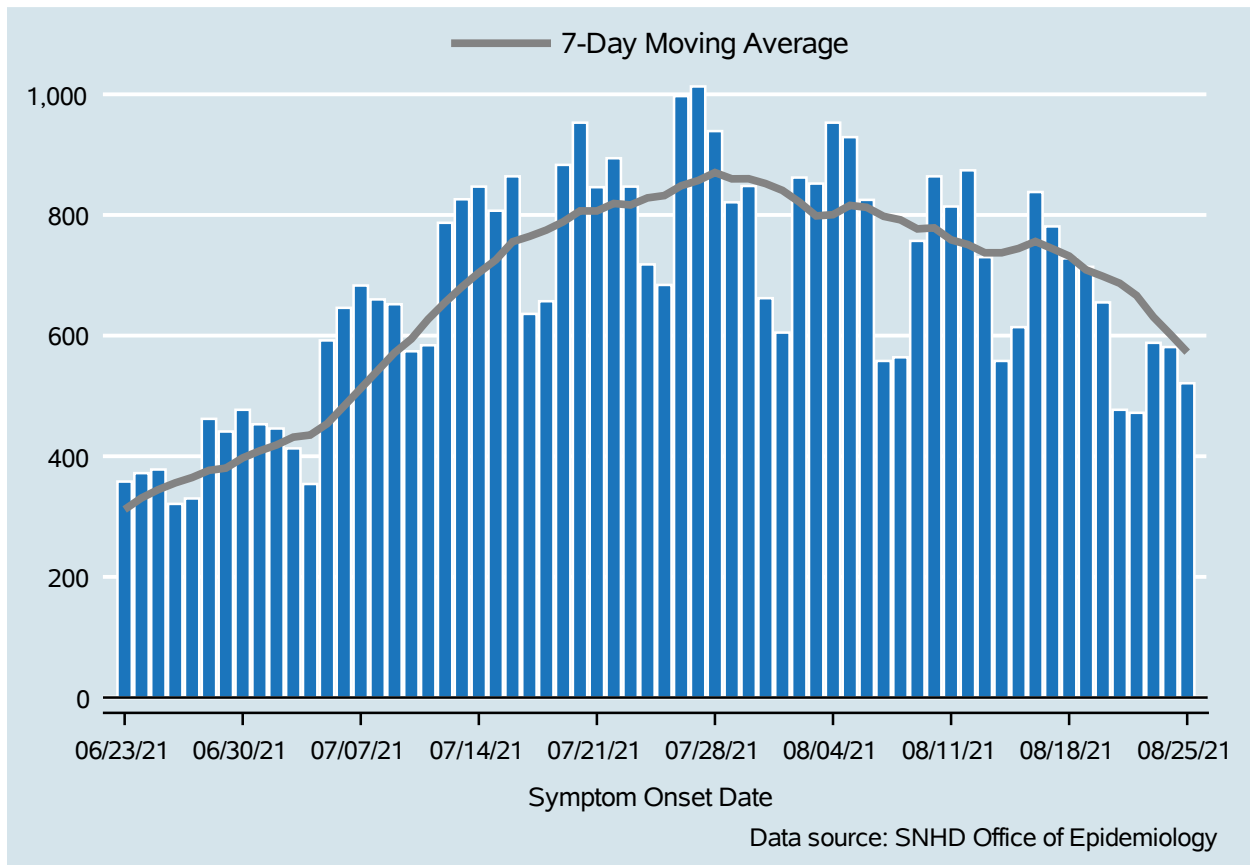


Table 1: COVID-19 Cases per Day, Clark County, NV

Date	Cases Per Day	7-Day Moving Average
Aug 12	874	750.9
Aug 13	730	737.3
Aug 14	558	737.3
Aug 15	614	744.4
Aug 16	838	756.0
Aug 17	781	744.1
Aug 18	728	731.9
Aug 19	714	709.0
Aug 20	655	698.3
Aug 21	477	686.7
Aug 22	472	666.4
Aug 23	588	630.7
Aug 24	581	602.1
Aug 25	521	572.6

COVID-19 Hospitalizations

Clark County, NV

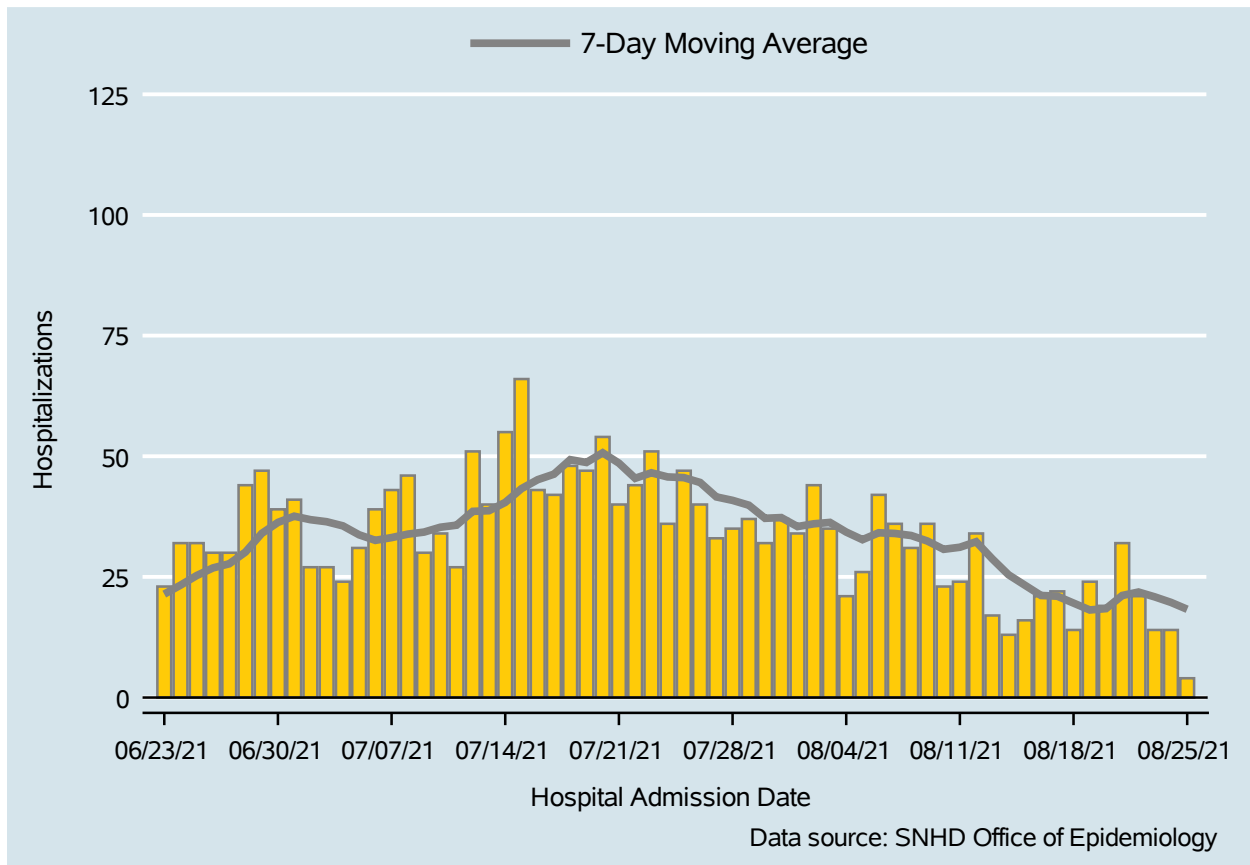


Table 2: COVID-19 Hospitalizations per Day, Clark County, NV

Date	Hospitalizations Per Day	7-Day Moving Average
Aug 12	34	32.3
Aug 13	17	28.7
Aug 14	13	25.4
Aug 15	16	23.3
Aug 16	21	21.1
Aug 17	22	21.0
Aug 18	14	19.6
Aug 19	24	18.1
Aug 20	19	18.4
Aug 21	32	21.1
Aug 22	21	21.9
Aug 23	14	20.9
Aug 24	14	19.7
Aug 25	4	18.3

COVID-19 Deaths

Clark County, NV

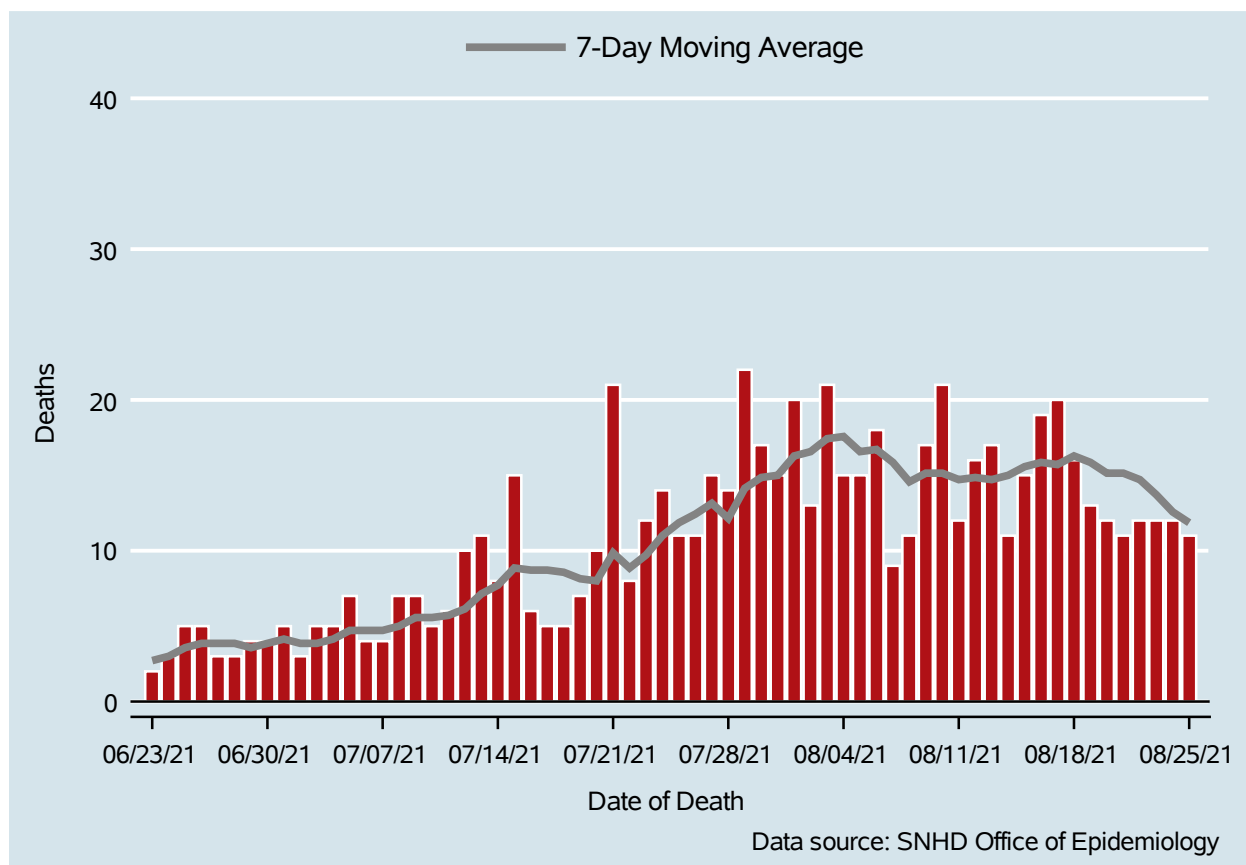


Table 3: COVID-19 Deaths per Day, Clark County, NV

Date	Deaths Per Day	7-Day Moving Average
Aug 12	16	14.9
Aug 13	17	14.7
Aug 14	11	15.0
Aug 15	15	15.6
Aug 16	19	15.9
Aug 17	20	15.7
Aug 18	16	16.3
Aug 19	13	15.9
Aug 20	12	15.1
Aug 21	11	15.1
Aug 22	12	14.7
Aug 23	12	13.7
Aug 24	12	12.6
Aug 25	11	11.9

7-Day Average of Daily New Cases per 100K, by Age Group (Years)

Clark County, NV

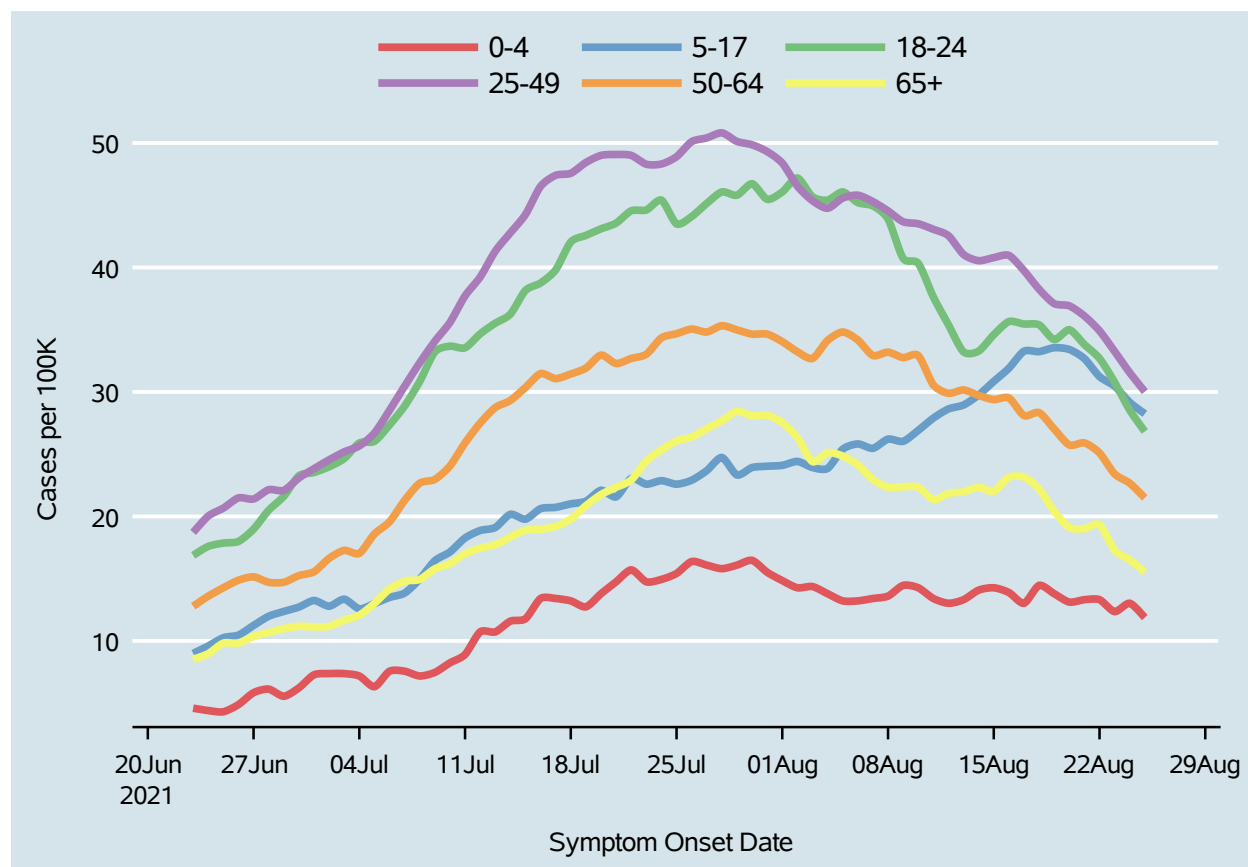
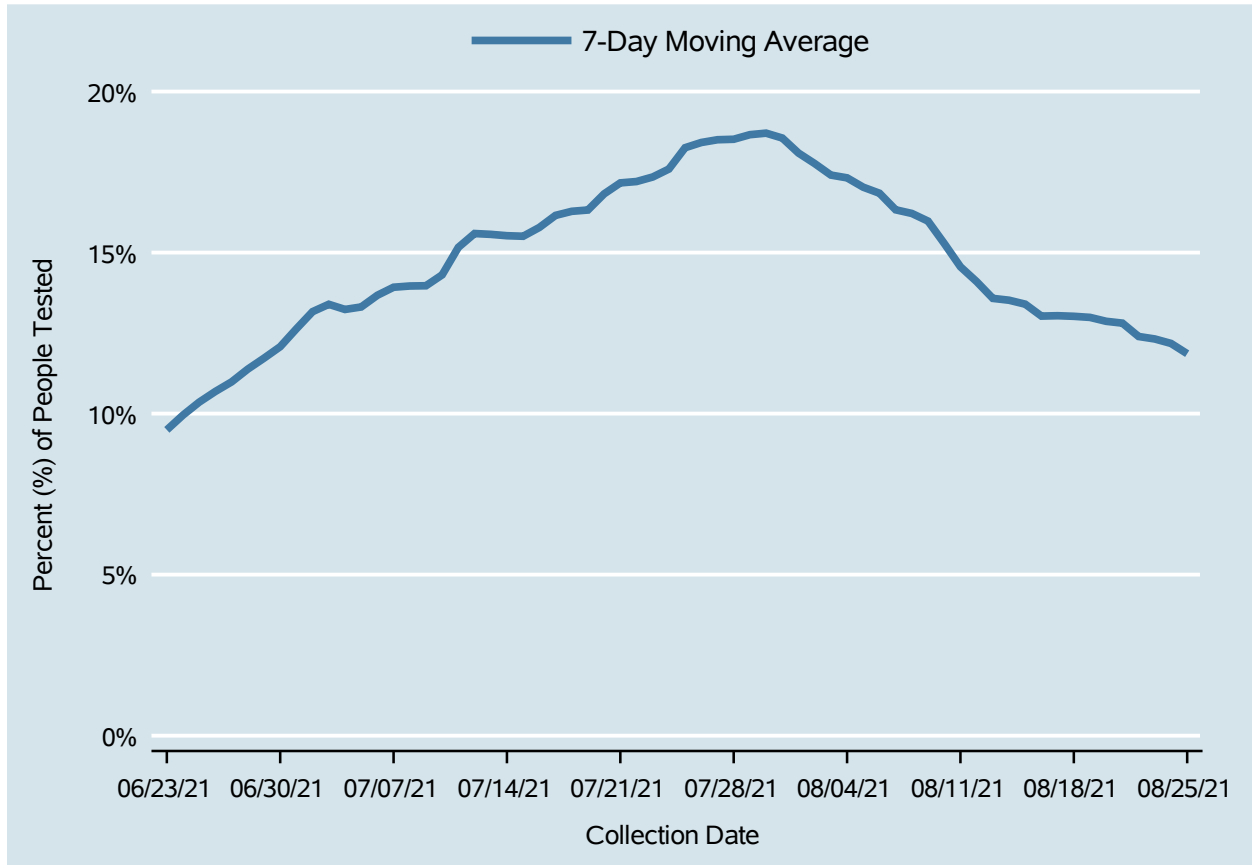


Table 4: 7-Day Average of Daily New Cases per 100K, by Age Group (Years)

Date	0-4	5-17	18-24	25-49	50-64	65+
Aug 12	13.0	28.6	35.4	42.6	29.9	21.8
Aug 13	13.3	29.0	33.2	41.0	30.2	22.0
Aug 14	14.1	29.8	33.3	40.5	29.7	22.3
Aug 15	14.3	30.8	34.6	40.8	29.4	22.0
Aug 16	13.9	31.9	35.7	41.0	29.5	23.1
Aug 17	13.0	33.3	35.5	39.7	28.1	23.1
Aug 18	14.5	33.2	35.4	38.3	28.3	22.2
Aug 19	13.8	33.6	34.2	37.1	27.0	20.4
Aug 20	13.1	33.4	35.0	36.9	25.7	19.1
Aug 21	13.3	32.7	33.8	36.1	25.9	19.0
Aug 22	13.3	31.2	32.7	34.9	25.1	19.3
Aug 23	12.4	30.5	30.8	33.3	23.4	17.3
Aug 24	13.0	29.2	28.5	31.5	22.7	16.5
Aug 25	11.9	28.2	26.8	30.0	21.5	15.5

Percent of People Receiving COVID-19 Viral Tests Who Have Positive Results

Clark County, NV



Report prepared by: Kellie Watkins, PhD, MS, Ying Zhang, PhD, MPH (Office of Epidemiology) and Lei Zhang, MS (Office of Informatics)