

COVID-19 Trends

Clark County, Nevada

Document creation date: August 28, 2021

- General notes: This report uses surveillance data collected by the Southern Nevada Health District. Due to delays related to laboratory processing, reporting, and case investigations, data from the most recent days are less complete than data from older time points. For this reason, as of June 10, 2020 this report will not display data from the previous three days prior to the date that the report was created. As many case investigations are ongoing, all data presented in this report are considered preliminary and subject to change. Data regarding cases, hospitalizations, deaths, and labs were last updated August 28, 2021 at 12:00 AM, and data is reported up through August 24, 2021.
- Cases: Symptom onset date was used for aggregating cases. If symptom onset date was missing, the following dates were substituted in this order: diagnosis date, lab collection date, report date (date case was reported to SNHD), event creation date (date case was entered into TriSano, SNHD's surveillance system).
- Hospitalizations: Admission date was used for aggregating hospitalizations. If admission date was missing, report date was substituted. If a person had more than one hospitalization after his/her COVID-19 diagnosis, only the first admission date was used.
- Deaths: Date of death was used for aggregating deaths. If date of death was missing, report date was used.
- For the "7-Day Average of Daily New Cases per 100K, by Age Group (Years)" graph and table, the population data source for calculating rate estimates was from Nevada State Demographer "2019 ASRHO Estimates and Projections Summary 2000 to 2038", 2020 projection, vintage 2019. Rates for individual age categories may be based on small numbers, which may give unstable estimates.
- All graphs in this report show data from approximately 60 days prior to the date of the report.
- All tables show data from the last 14 days before the current date, with the exception of the "Percent Change in Weekly Totals from Previous Week", which displays data from the previous eight completed weeks.
- For the "Percent of People Receiving COVID-19 Viral Tests Who Have Positive Results" graph, one person who has multiple specimens collected in one day is only reported once. If any test of that person is positive, that person counts as a positive result. If all tests of that individual are negative, that person counts as a negative result. Laboratory tests were included if they were a test assessing for the presence of SARS-CoV-2 viral RNA, for example PCR tests. Antibody tests were excluded.

COVID-19 Cases

Clark County, NV

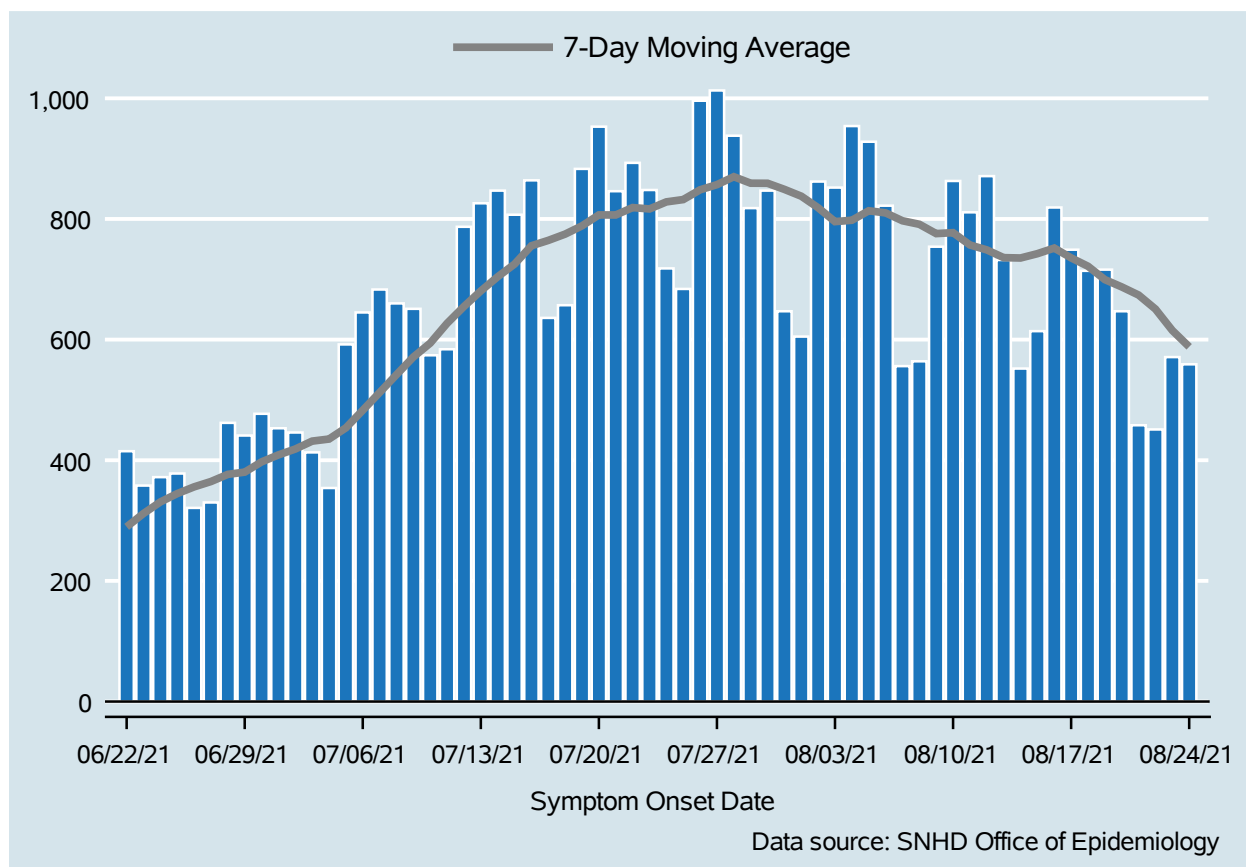


Table 1: COVID-19 Cases per Day, Clark County, NV

Date	Cases Per Day	7-Day Moving Average
Aug 11	811	756.9
Aug 12	871	748.7
Aug 13	732	735.9
Aug 14	552	735.3
Aug 15	614	742.4
Aug 16	819	751.7
Aug 17	749	735.4
Aug 18	714	721.6
Aug 19	716	699.4
Aug 20	647	687.3
Aug 21	458	673.9
Aug 22	451	650.6
Aug 23	571	615.1
Aug 24	559	588.0

COVID-19 Hospitalizations

Clark County, NV

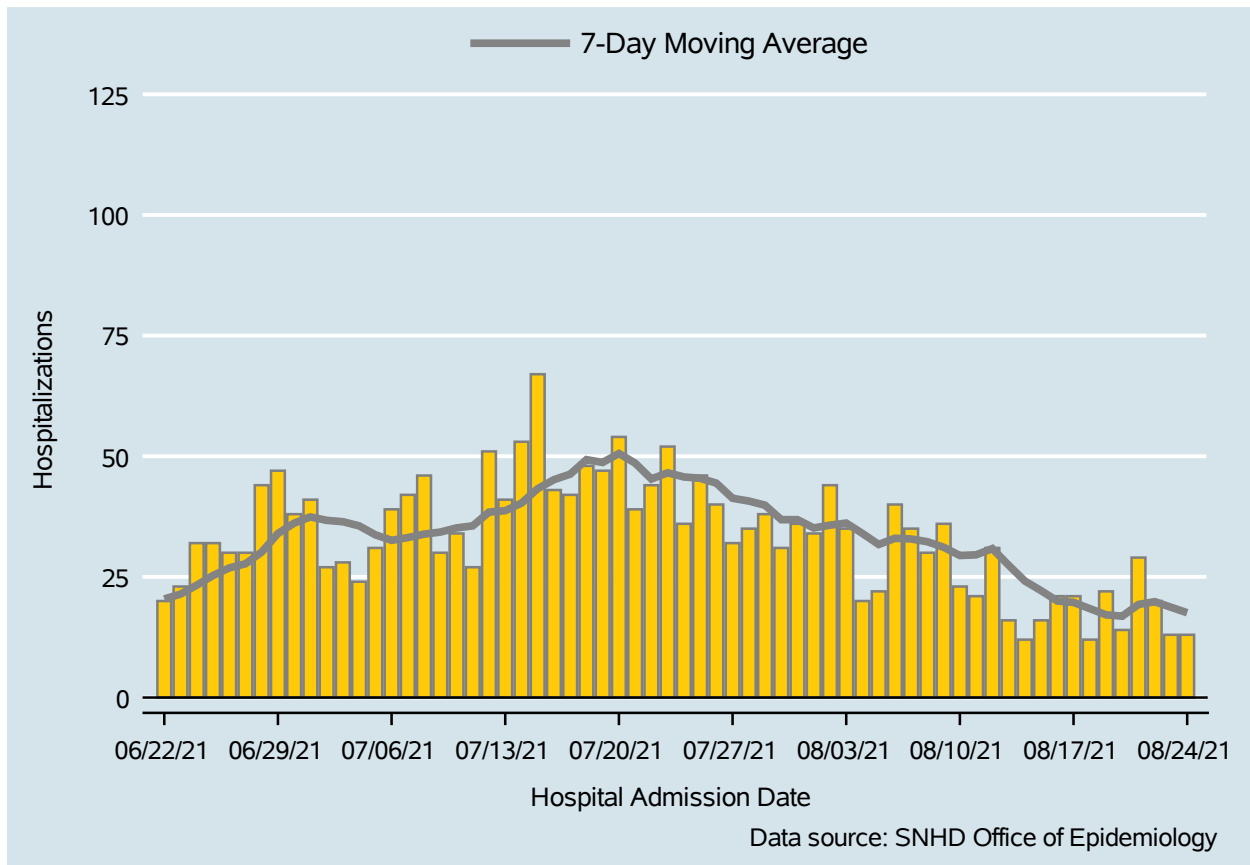


Table 2: COVID-19 Hospitalizations per Day, Clark County, NV

Date	Hospitalizations Per Day	7-Day Moving Average
Aug 11	21	29.6
Aug 12	31	30.9
Aug 13	16	27.4
Aug 14	12	24.1
Aug 15	16	22.1
Aug 16	21	20.0
Aug 17	21	19.7
Aug 18	12	18.4
Aug 19	22	17.1
Aug 20	14	16.9
Aug 21	29	19.3
Aug 22	20	19.9
Aug 23	13	18.7
Aug 24	13	17.6

COVID-19 Deaths

Clark County, NV

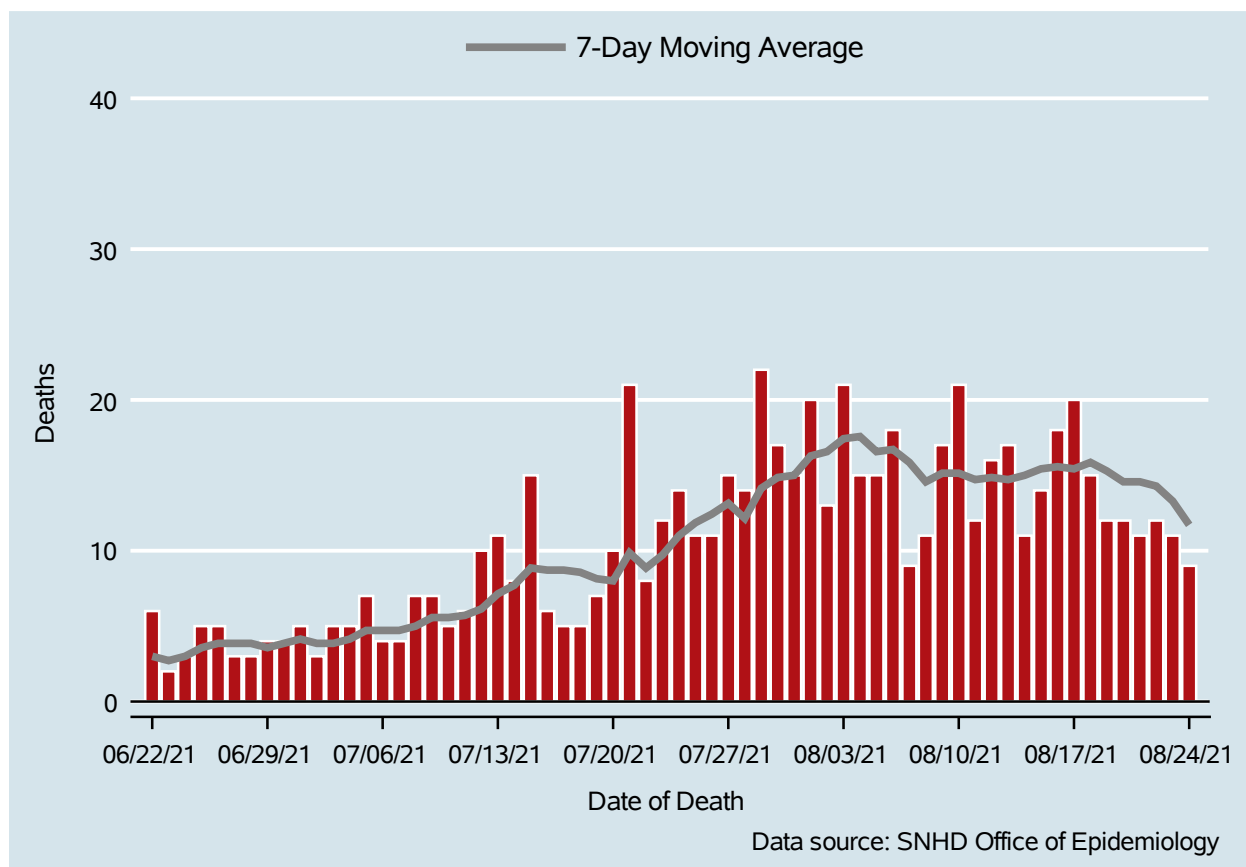


Table 3: COVID-19 Deaths per Day, Clark County, NV

Date	Deaths Per Day	7-Day Moving Average
Aug 11	12	14.7
Aug 12	16	14.9
Aug 13	17	14.7
Aug 14	11	15.0
Aug 15	14	15.4
Aug 16	18	15.6
Aug 17	20	15.4
Aug 18	15	15.9
Aug 19	12	15.3
Aug 20	12	14.6
Aug 21	11	14.6
Aug 22	12	14.3
Aug 23	11	13.3
Aug 24	9	11.7

7-Day Average of Daily New Cases per 100K, by Age Group (Years)

Clark County, NV

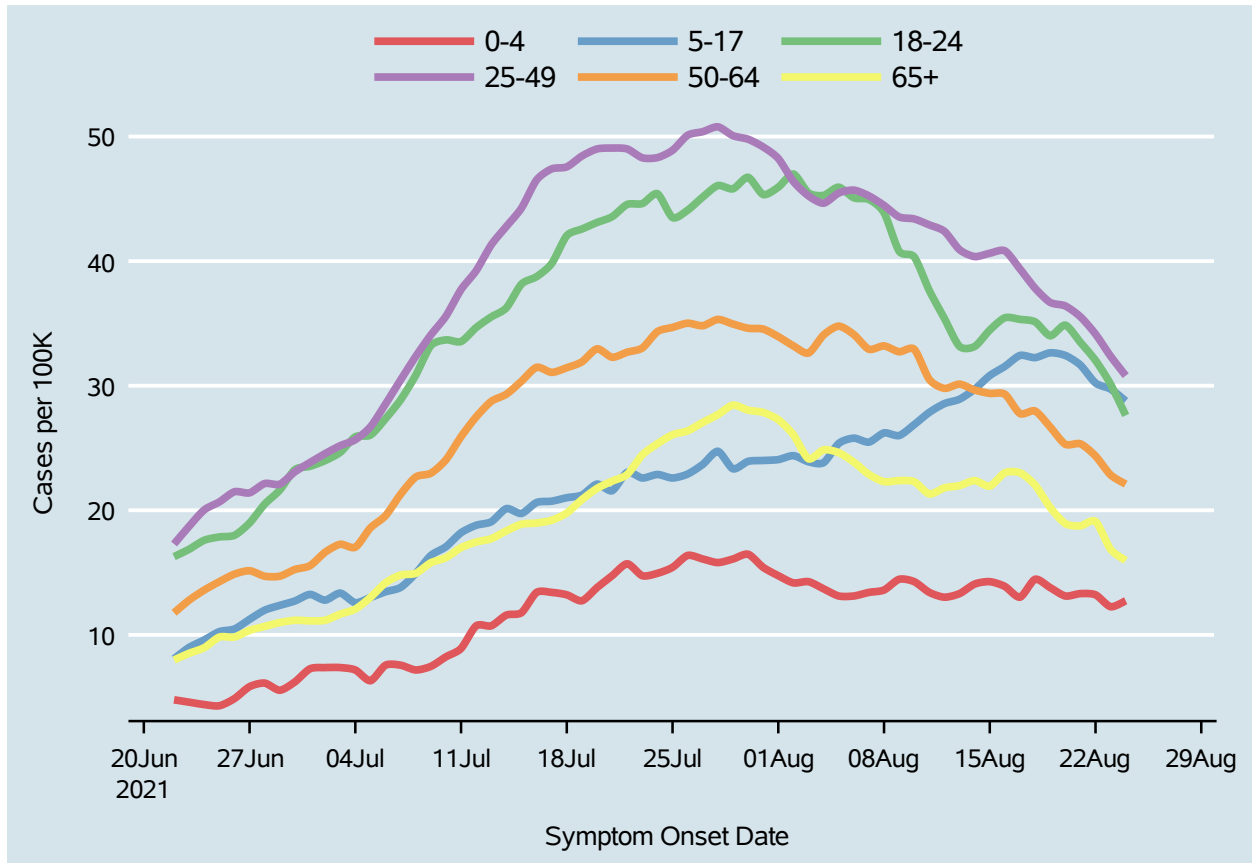
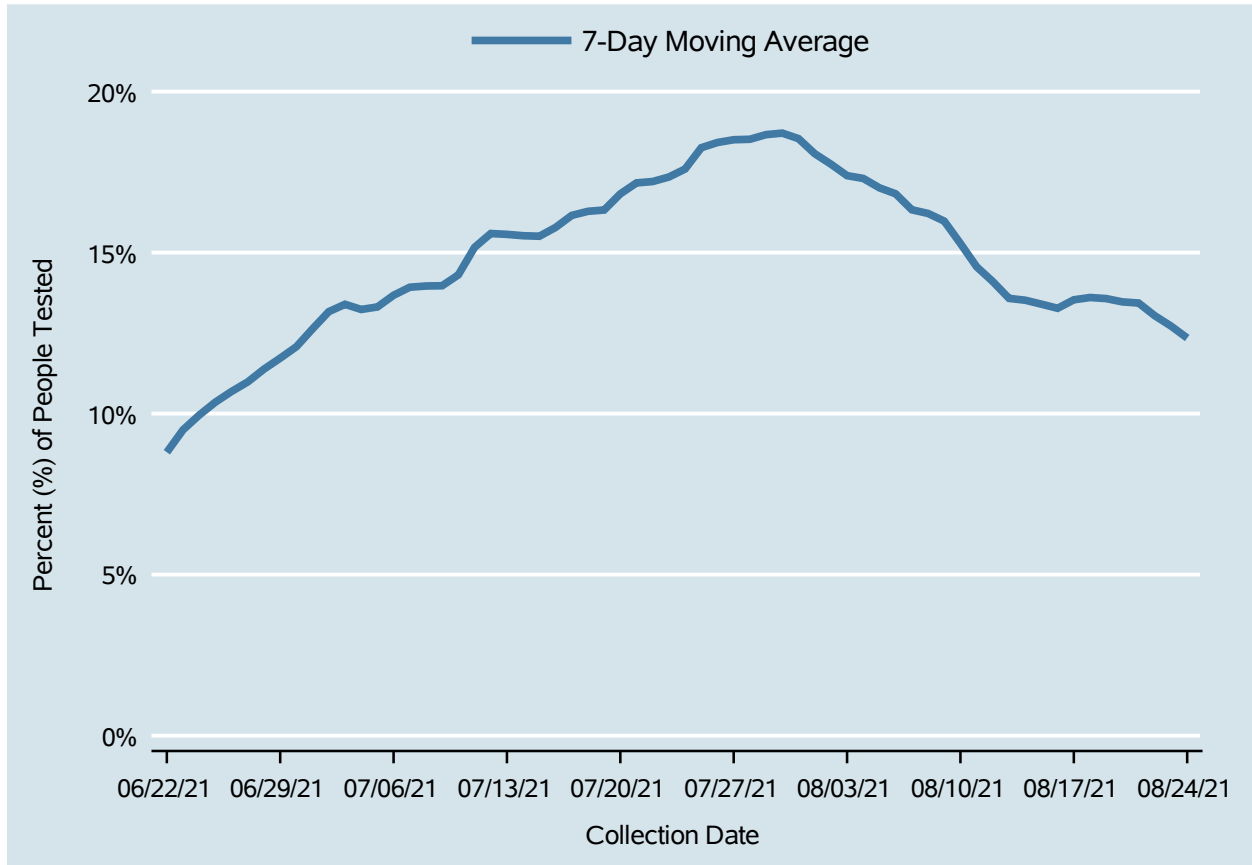


Table 4: 7-Day Average of Daily New Cases per 100K, by Age Group (Years)

Date	0-4	5-17	18-24	25-49	50-64	65+
Aug 11	13.4	27.9	37.6	42.9	30.5	21.3
Aug 12	13.0	28.6	35.4	42.4	29.8	21.8
Aug 13	13.3	28.9	33.2	40.9	30.1	22.0
Aug 14	14.1	29.7	33.2	40.4	29.7	22.4
Aug 15	14.3	30.8	34.5	40.6	29.4	21.9
Aug 16	13.9	31.6	35.5	40.8	29.3	23.0
Aug 17	13.0	32.4	35.3	39.4	27.8	23.0
Aug 18	14.5	32.3	35.1	37.8	28.0	22.0
Aug 19	13.8	32.6	34.0	36.7	26.7	20.2
Aug 20	13.1	32.4	34.9	36.4	25.3	18.9
Aug 21	13.3	31.7	33.5	35.5	25.3	18.8
Aug 22	13.2	30.2	32.0	34.1	24.4	19.1
Aug 23	12.3	29.7	30.1	32.4	22.8	16.9
Aug 24	12.7	28.8	27.6	30.8	22.1	16.0

Percent of People Receiving COVID-19 Viral Tests Who Have Positive Results

Clark County, NV



Report prepared by: Kellie Watkins, PhD, MS, Ying Zhang, PhD, MPH (Office of Epidemiology) and Lei Zhang, MS (Office of Informatics)