

# COVID-19 Trends

Clark County, Nevada

Document creation date: August 27, 2021

- General notes: This report uses surveillance data collected by the Southern Nevada Health District. Due to delays related to laboratory processing, reporting, and case investigations, data from the most recent days are less complete than data from older time points. For this reason, as of June 10, 2020 this report will not display data from the previous three days prior to the date that the report was created. As many case investigations are ongoing, all data presented in this report are considered preliminary and subject to change. Data regarding cases, hospitalizations, deaths, and labs were last updated August 27, 2021 at 12:00 AM, and data is reported up through August 23, 2021.
- Cases: Symptom onset date was used for aggregating cases. If symptom onset date was missing, the following dates were substituted in this order: diagnosis date, lab collection date, report date (date case was reported to SNHD), event creation date (date case was entered into TriSano, SNHD's surveillance system).
- Hospitalizations: Admission date was used for aggregating hospitalizations. If admission date was missing, report date was substituted. If a person had more than one hospitalization after his/her COVID-19 diagnosis, only the first admission date was used.
- Deaths: Date of death was used for aggregating deaths. If date of death was missing, report date was used.
- For the "7-Day Average of Daily New Cases per 100K, by Age Group (Years)" graph and table, the population data source for calculating rate estimates was from Nevada State Demographer "2019 ASRHO Estimates and Projections Summary 2000 to 2038", 2020 projection, vintage 2019. Rates for individual age categories may be based on small numbers, which may give unstable estimates.
- All graphs in this report show data from approximately 60 days prior to the date of the report.
- All tables show data from the last 14 days before the current date, with the exception of the "Percent Change in Weekly Totals from Previous Week", which displays data from the previous eight completed weeks.
- For the "Percent of People Receiving COVID-19 Viral Tests Who Have Positive Results" graph, one person who has multiple specimens collected in one day is only reported once. If any test of that person is positive, that person counts as a positive result. If all tests of that individual are negative, that person counts as a negative result. Laboratory tests were included if they were a test assessing for the presence of SARS-CoV-2 viral RNA, for example PCR tests. Antibody tests were excluded.

# COVID-19 Cases

Clark County, NV

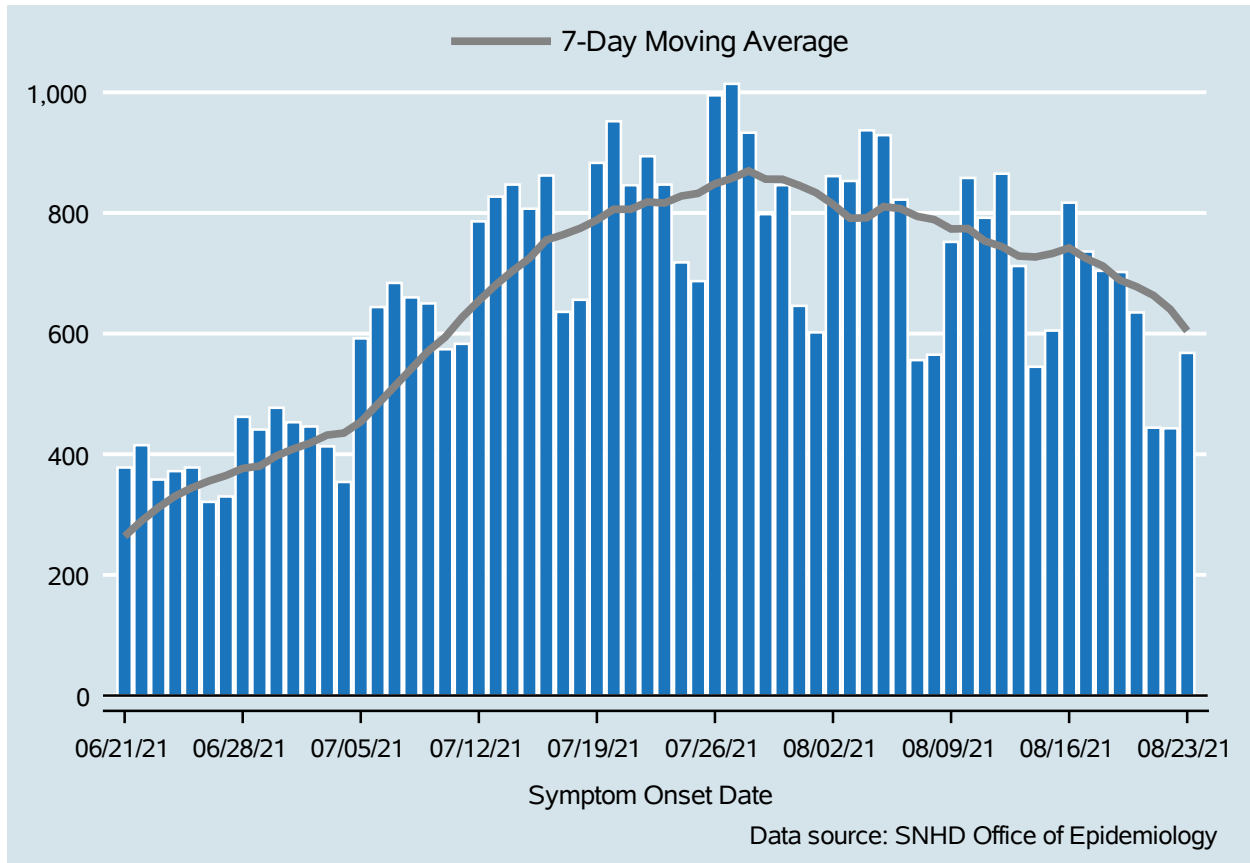


Table 1: COVID-19 Cases per Day, Clark County, NV

Date	Cases Per Day	7-Day Moving Average
Aug 10	858	774.1
Aug 11	792	753.4
Aug 12	865	744.3
Aug 13	712	728.6
Aug 14	545	727.0
Aug 15	605	732.7
Aug 16	817	742.0
Aug 17	736	724.6
Aug 18	704	712.0
Aug 19	702	688.7
Aug 20	635	677.7
Aug 21	444	663.3
Aug 22	443	640.1
Aug 23	568	604.6

# COVID-19 Hospitalizations

Clark County, NV

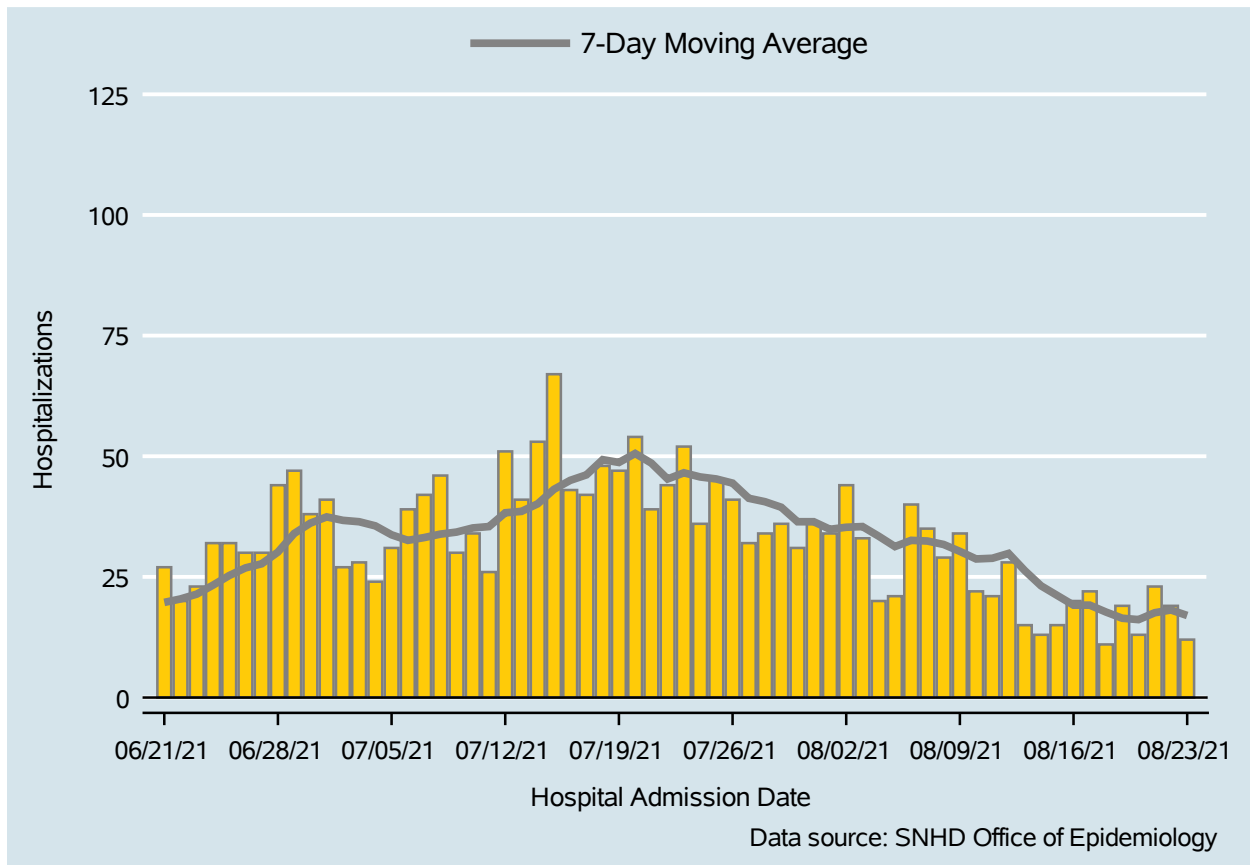


Table 2: COVID-19 Hospitalizations per Day, Clark County, NV

Date	Hospitalizations Per Day	7-Day Moving Average
Aug 10	22	28.7
Aug 11	21	28.9
Aug 12	28	29.9
Aug 13	15	26.3
Aug 14	13	23.1
Aug 15	15	21.1
Aug 16	20	19.1
Aug 17	22	19.1
Aug 18	11	17.7
Aug 19	19	16.4
Aug 20	13	16.1
Aug 21	23	17.6
Aug 22	19	18.1
Aug 23	12	17.0

# COVID-19 Deaths

Clark County, NV

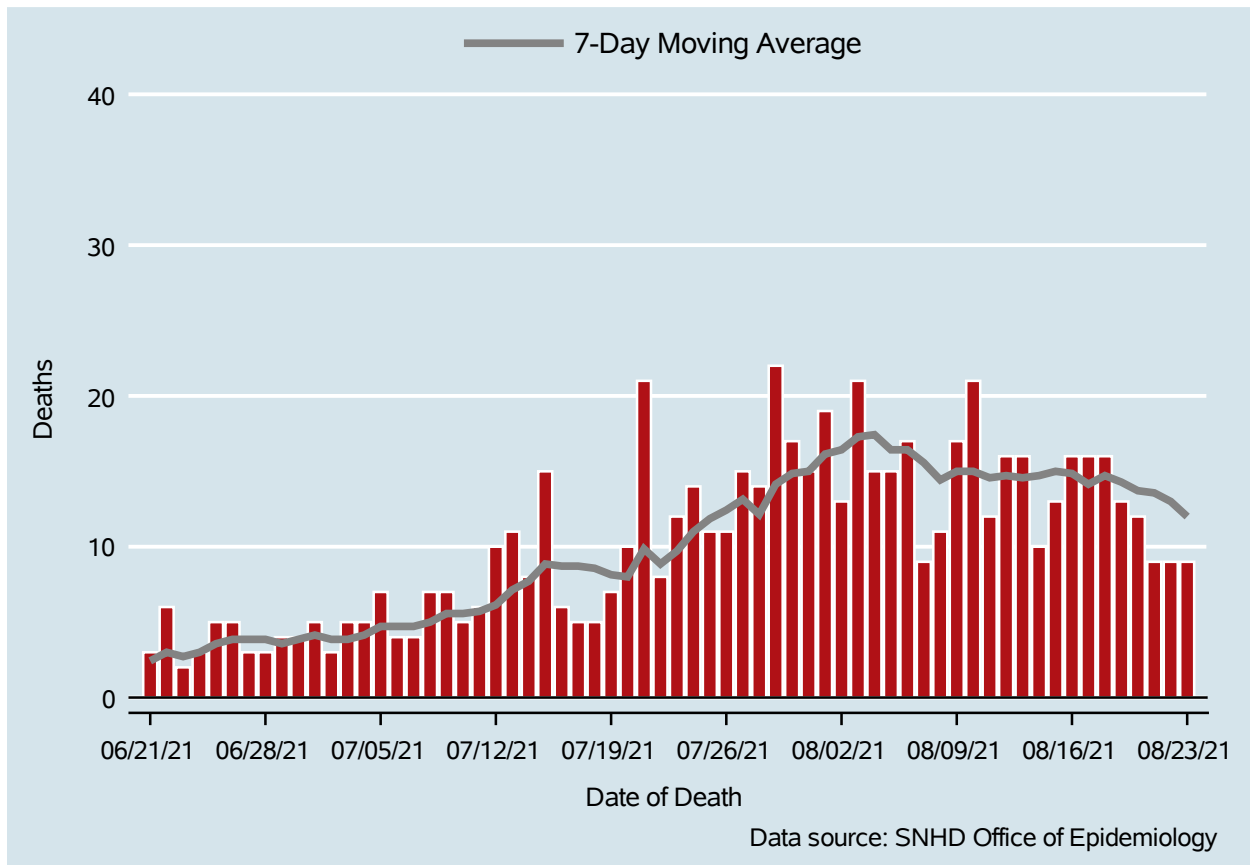


Table 3: COVID-19 Deaths per Day, Clark County, NV

Date	Deaths Per Day	7-Day Moving Average
Aug 10	21	15.0
Aug 11	12	14.6
Aug 12	16	14.7
Aug 13	16	14.6
Aug 14	10	14.7
Aug 15	13	15.0
Aug 16	16	14.9
Aug 17	16	14.1
Aug 18	16	14.7
Aug 19	13	14.3
Aug 20	12	13.7
Aug 21	9	13.6
Aug 22	9	13.0
Aug 23	9	12.0

## 7-Day Average of Daily New Cases per 100K, by Age Group (Years)

Clark County, NV

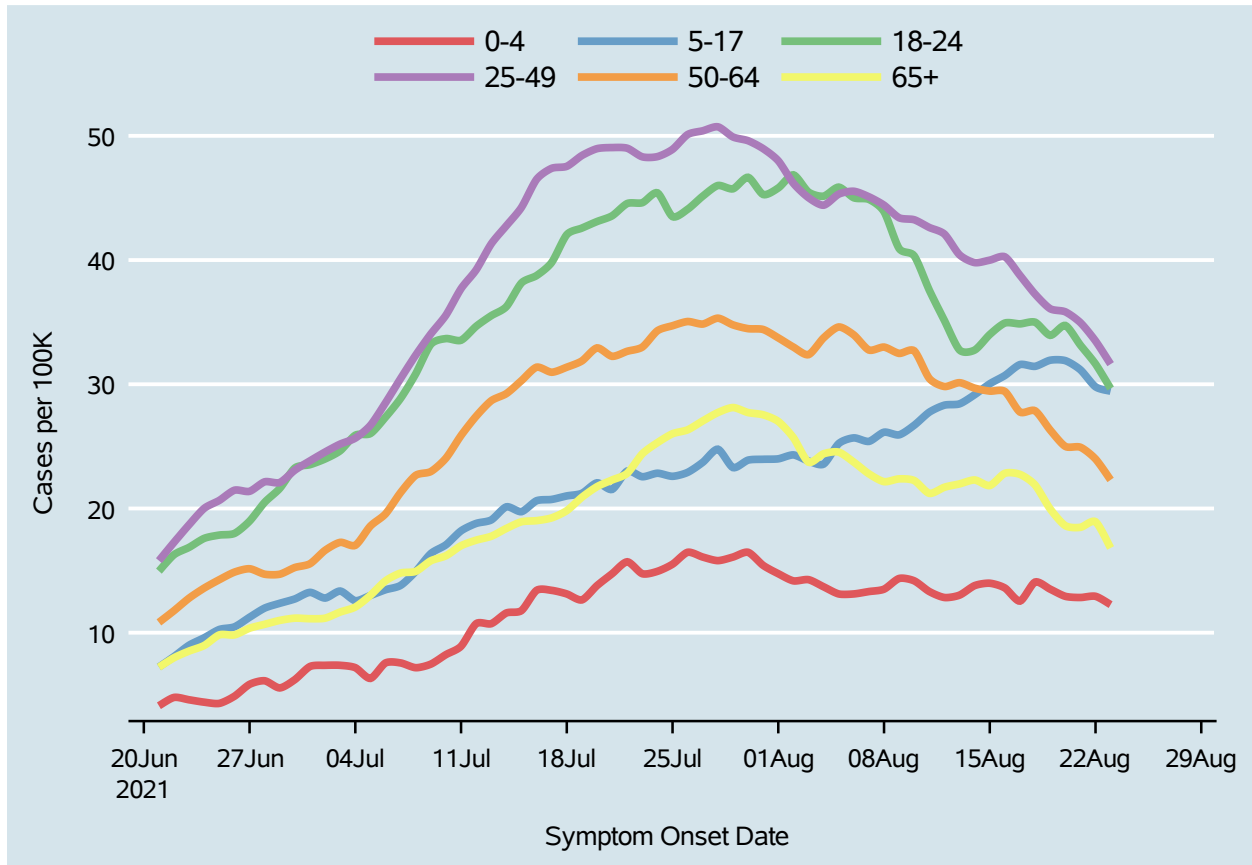
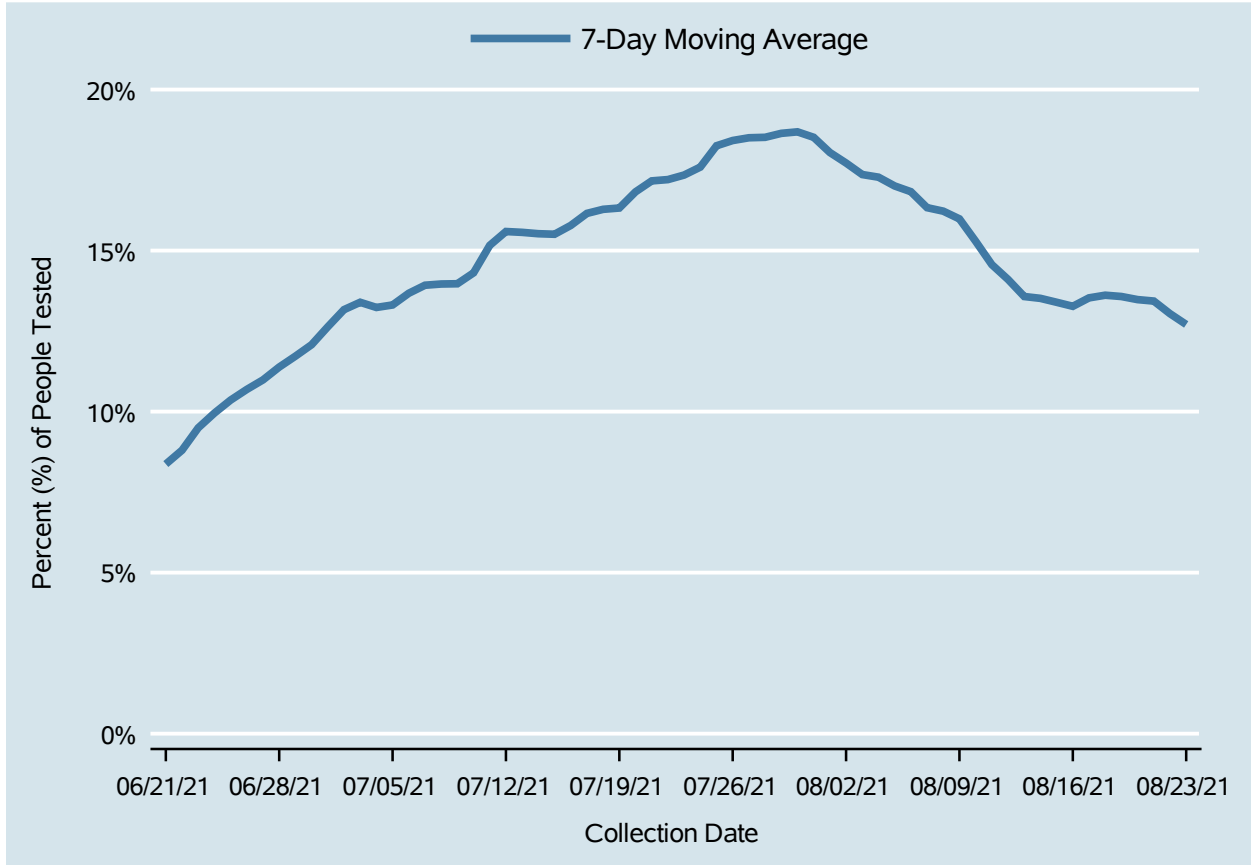


Table 4: 7-Day Average of Daily New Cases per 100K, by Age Group (Years)

Date	0-4	5-17	18-24	25-49	50-64	65+
Aug 10	14.2	26.7	40.3	43.2	32.7	22.3
Aug 11	13.3	27.8	37.6	42.6	30.5	21.2
Aug 12	12.8	28.3	35.1	42.1	29.8	21.7
Aug 13	13.0	28.4	32.8	40.4	30.1	22.0
Aug 14	13.8	29.2	32.8	39.8	29.7	22.3
Aug 15	14.0	30.0	34.0	40.0	29.5	21.8
Aug 16	13.6	30.7	34.9	40.3	29.4	22.8
Aug 17	12.5	31.6	34.9	38.8	27.8	22.7
Aug 18	14.1	31.4	35.0	37.3	27.9	21.9
Aug 19	13.5	31.9	33.9	36.1	26.3	20.0
Aug 20	12.9	31.9	34.7	35.8	25.0	18.6
Aug 21	12.8	31.2	33.2	35.0	24.9	18.5
Aug 22	12.9	29.8	31.6	33.5	24.0	18.9
Aug 23	12.3	29.4	29.7	31.6	22.3	16.8

# Percent of People Receiving COVID-19 Viral Tests Who Have Positive Results

Clark County, NV



*Report prepared by: Kellie Watkins, PhD, MS, Ying Zhang, PhD, MPH (Office of Epidemiology) and Lei Zhang, MS (Office of Informatics)*