

COVID-19 Trends

Clark County, Nevada

Document creation date: August 24, 2021

- General notes: This report uses surveillance data collected by the Southern Nevada Health District. Due to delays related to laboratory processing, reporting, and case investigations, data from the most recent days are less complete than data from older time points. For this reason, as of June 10, 2020 this report will not display data from the previous three days prior to the date that the report was created. As many case investigations are ongoing, all data presented in this report are considered preliminary and subject to change. Data regarding cases, hospitalizations, deaths, and labs were last updated August 24, 2021 at 12:00 AM, and data is reported up through August 20, 2021.
- Cases: Symptom onset date was used for aggregating cases. If symptom onset date was missing, the following dates were substituted in this order: diagnosis date, lab collection date, report date (date case was reported to SNHD), event creation date (date case was entered into TriSano, SNHD's surveillance system).
- Hospitalizations: Admission date was used for aggregating hospitalizations. If admission date was missing, report date was substituted. If a person had more than one hospitalization after his/her COVID-19 diagnosis, only the first admission date was used.
- Deaths: Date of death was used for aggregating deaths. If date of death was missing, report date was used.
- For the "7-Day Average of Daily New Cases per 100K, by Age Group (Years)" graph and table, the population data source for calculating rate estimates was from Nevada State Demographer "2019 ASRHO Estimates and Projections Summary 2000 to 2038", 2020 projection, vintage 2019. Rates for individual age categories may be based on small numbers, which may give unstable estimates.
- All graphs in this report show data from approximately 60 days prior to the date of the report.
- All tables show data from the last 14 days before the current date, with the exception of the "Percent Change in Weekly Totals from Previous Week", which displays data from the previous eight completed weeks.
- For the "Percent of People Receiving COVID-19 Viral Tests Who Have Positive Results" graph, one person who has multiple specimens collected in one day is only reported once. If any test of that person is positive, that person counts as a positive result. If all tests of that individual are negative, that person counts as a negative result. Laboratory tests were included if they were a test assessing for the presence of SARS-CoV-2 viral RNA, for example PCR tests. Antibody tests were excluded.

COVID-19 Cases

Clark County, NV

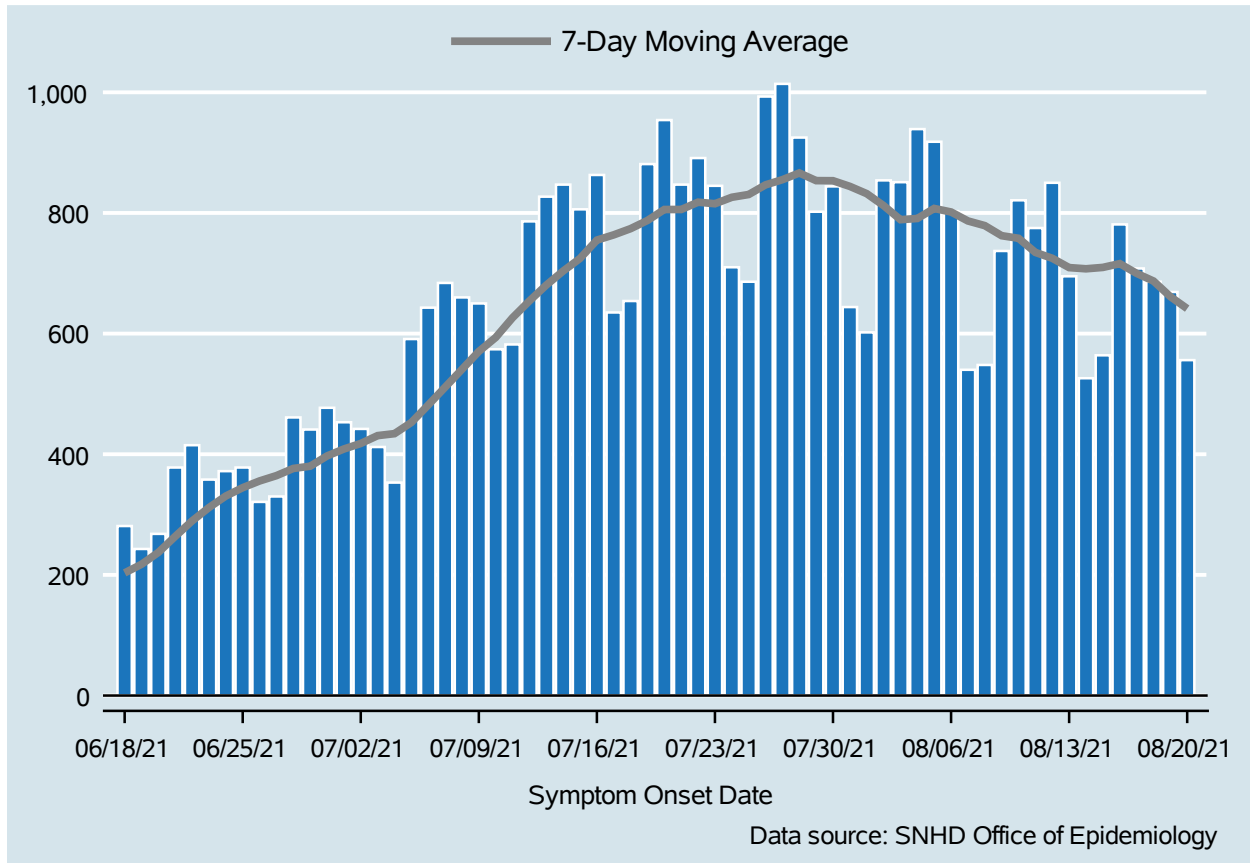


Table 1: COVID-19 Cases per Day, Clark County, NV

Date	Cases Per Day	7-Day Moving Average
Aug 07	540	786.7
Aug 08	548	779.0
Aug 09	737	762.3
Aug 10	821	758.0
Aug 11	775	734.6
Aug 12	850	724.9
Aug 13	695	709.4
Aug 14	526	707.4
Aug 15	564	709.7
Aug 16	781	716.0
Aug 17	708	699.9
Aug 18	686	687.1
Aug 19	669	661.3
Aug 20	556	641.4

COVID-19 Hospitalizations

Clark County, NV

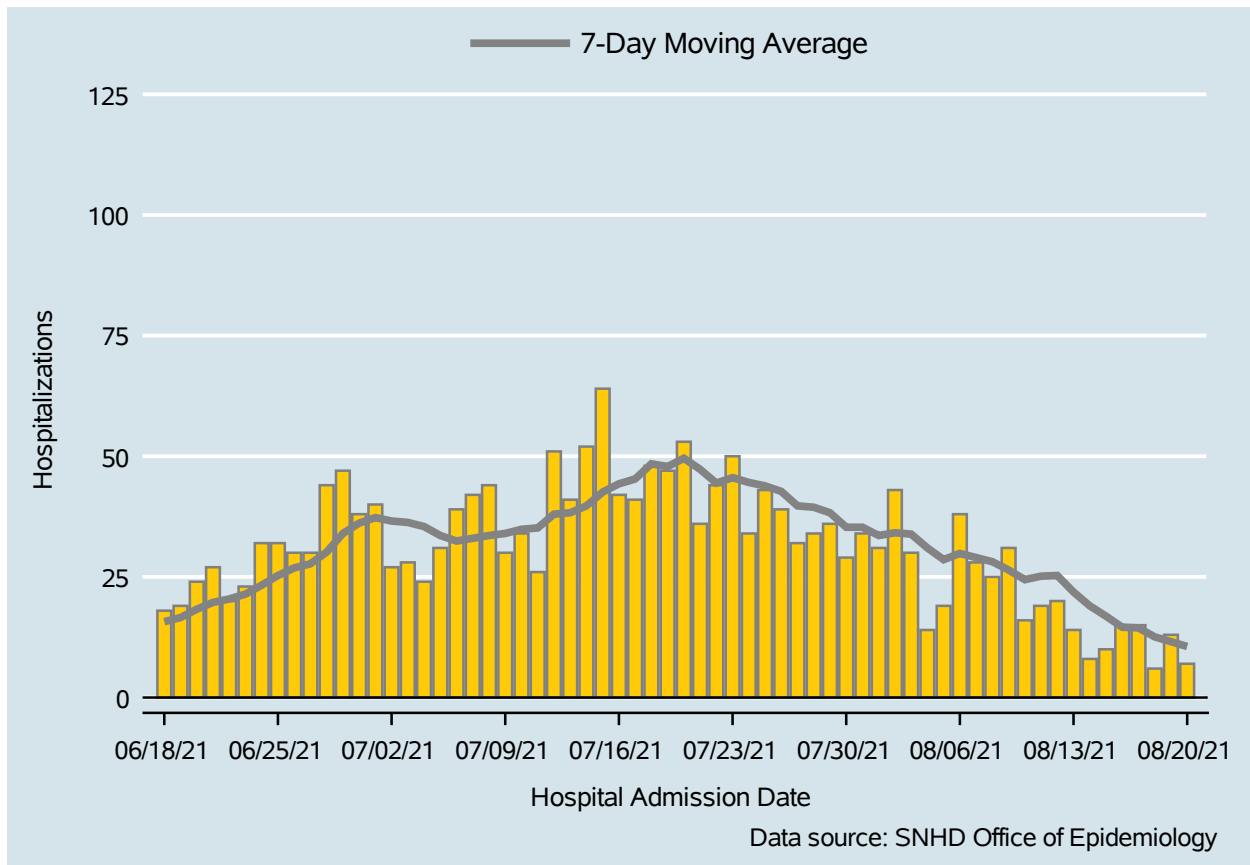


Table 2: COVID-19 Hospitalizations per Day, Clark County, NV

Date	Hospitalizations Per Day	7-Day Moving Average
Aug 07	28	29.0
Aug 08	25	28.1
Aug 09	31	26.4
Aug 10	16	24.4
Aug 11	19	25.1
Aug 12	20	25.3
Aug 13	14	21.9
Aug 14	8	19.0
Aug 15	10	16.9
Aug 16	15	14.6
Aug 17	15	14.4
Aug 18	6	12.6
Aug 19	13	11.6
Aug 20	7	10.6

COVID-19 Deaths

Clark County, NV

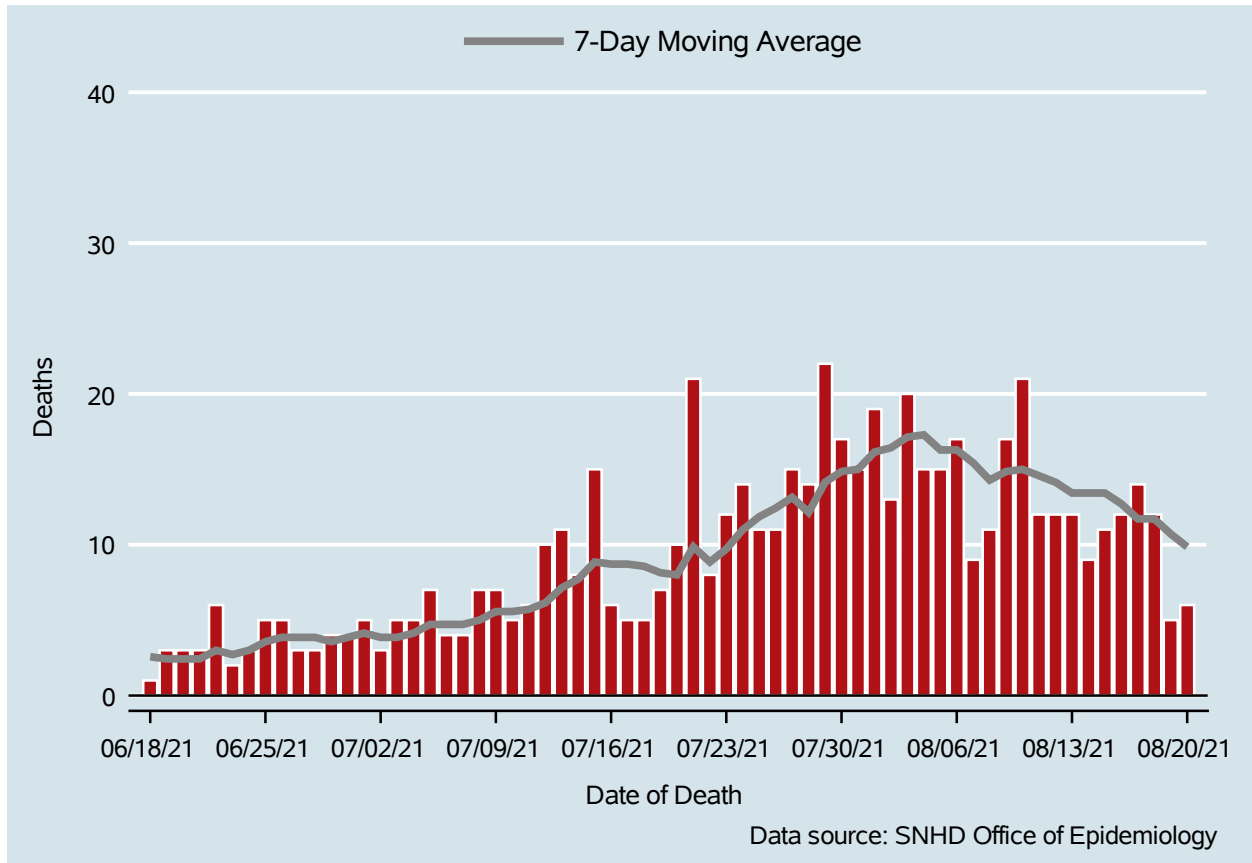


Table 3: COVID-19 Deaths per Day, Clark County, NV

Date	Deaths Per Day	7-Day Moving Average
Aug 07	9	15.4
Aug 08	11	14.3
Aug 09	17	14.9
Aug 10	21	15.0
Aug 11	12	14.6
Aug 12	12	14.1
Aug 13	12	13.4
Aug 14	9	13.4
Aug 15	11	13.4
Aug 16	12	12.7
Aug 17	14	11.7
Aug 18	12	11.7
Aug 19	5	10.7
Aug 20	6	9.9

7-Day Average of Daily New Cases per 100K, by Age Group (Years)

Clark County, NV

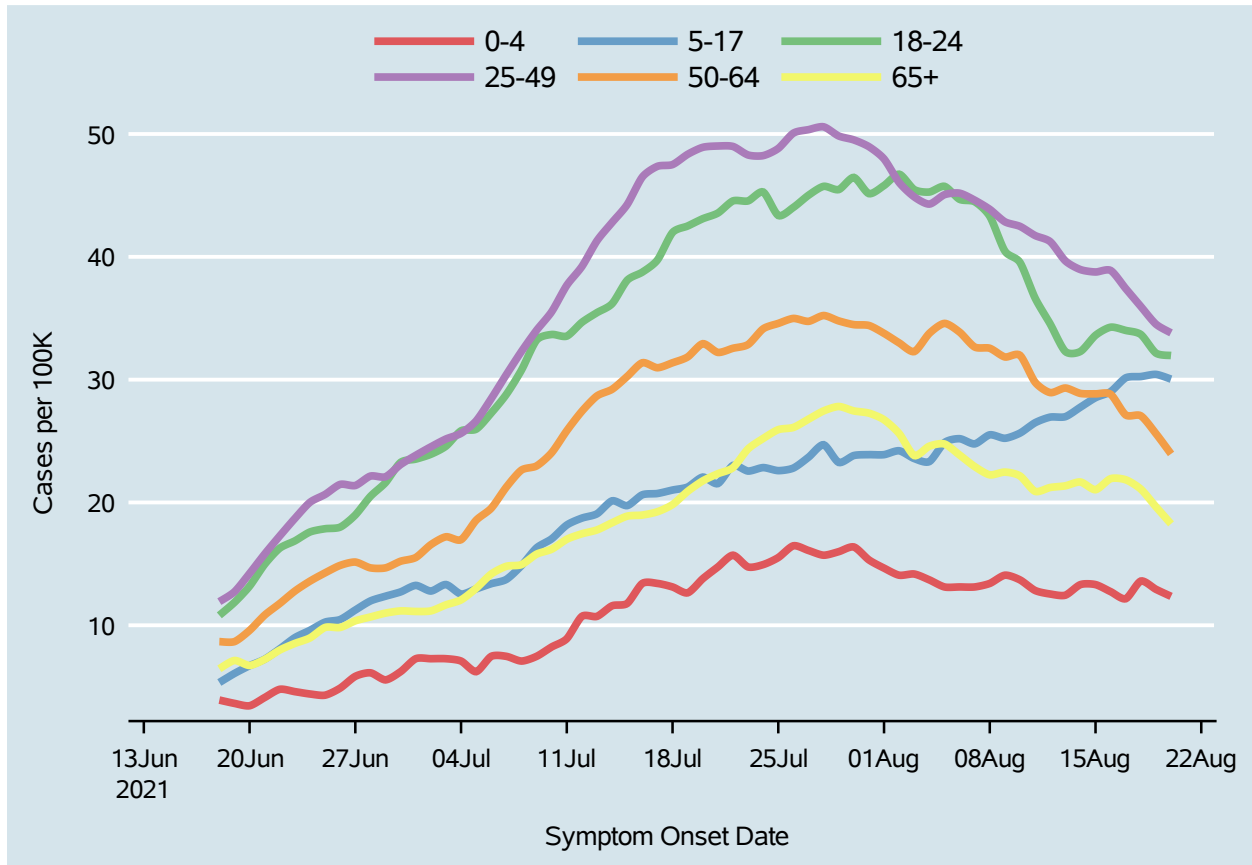
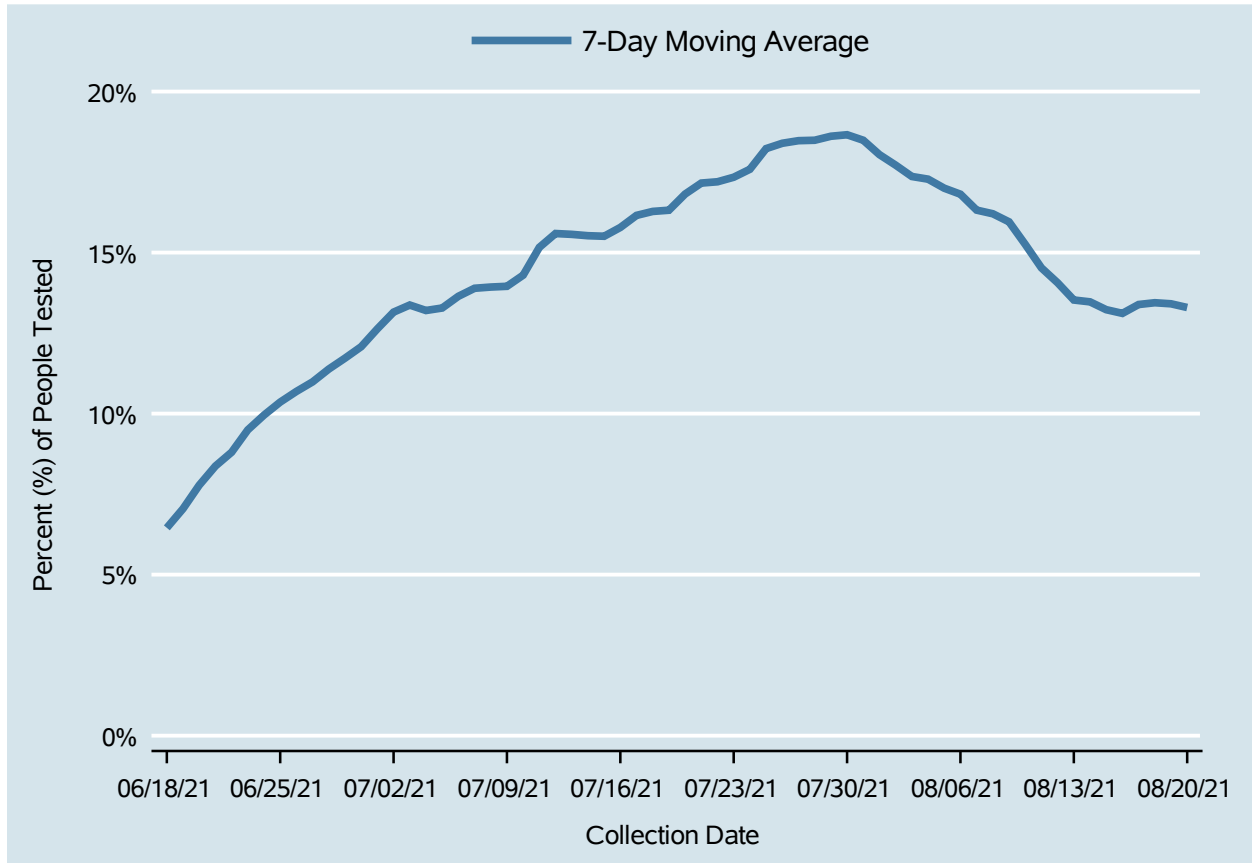


Table 4: 7-Day Average of Daily New Cases per 100K, by Age Group (Years)

Date	0-4	5-17	18-24	25-49	50-64	65+
Aug 07	13.1	24.8	44.5	44.6	32.7	22.9
Aug 08	13.4	25.5	43.3	43.9	32.6	22.3
Aug 09	14.1	25.2	40.5	42.9	31.8	22.5
Aug 10	13.7	25.6	39.5	42.5	32.0	22.2
Aug 11	12.8	26.5	36.6	41.7	29.8	20.9
Aug 12	12.5	26.9	34.5	41.2	28.9	21.2
Aug 13	12.5	27.0	32.3	39.7	29.3	21.4
Aug 14	13.3	27.8	32.3	39.0	28.9	21.7
Aug 15	13.3	28.5	33.6	38.8	28.8	21.0
Aug 16	12.7	29.0	34.3	38.9	28.8	21.9
Aug 17	12.2	30.1	34.0	37.4	27.1	21.8
Aug 18	13.6	30.3	33.7	36.0	27.1	21.1
Aug 19	12.9	30.4	32.2	34.5	25.6	19.6
Aug 20	12.4	30.0	32.0	33.8	24.0	18.3

Percent of People Receiving COVID-19 Viral Tests Who Have Positive Results

Clark County, NV



Report prepared by: Kellie Watkins, PhD, MS, Ying Zhang, PhD, MPH (Office of Epidemiology) and Lei Zhang, MS (Office of Informatics)