

# COVID-19 Trends

Clark County, Nevada

Document creation date: August 21, 2021

- General notes: This report uses surveillance data collected by the Southern Nevada Health District. Due to delays related to laboratory processing, reporting, and case investigations, data from the most recent days are less complete than data from older time points. For this reason, as of June 10, 2020 this report will not display data from the previous three days prior to the date that the report was created. As many case investigations are ongoing, all data presented in this report are considered preliminary and subject to change. Data regarding cases, hospitalizations, deaths, and labs were last updated August 21, 2021 at 12:00 AM, and data is reported up through August 17, 2021.
- Cases: Symptom onset date was used for aggregating cases. If symptom onset date was missing, the following dates were substituted in this order: diagnosis date, lab collection date, report date (date case was reported to SNHD), event creation date (date case was entered into TriSano, SNHD's surveillance system).
- Hospitalizations: Admission date was used for aggregating hospitalizations. If admission date was missing, report date was substituted. If a person had more than one hospitalization after his/her COVID-19 diagnosis, only the first admission date was used.
- Deaths: Date of death was used for aggregating deaths. If date of death was missing, report date was used.
- For the "7-Day Average of Daily New Cases per 100K, by Age Group (Years)" graph and table, the population data source for calculating rate estimates was from Nevada State Demographer "2019 ASRHO Estimates and Projections Summary 2000 to 2038", 2020 projection, vintage 2019. Rates for individual age categories may be based on small numbers, which may give unstable estimates.
- All graphs in this report show data from approximately 60 days prior to the date of the report.
- All tables show data from the last 14 days before the current date, with the exception of the "Percent Change in Weekly Totals from Previous Week", which displays data from the previous eight completed weeks.
- For the "Percent of People Receiving COVID-19 Viral Tests Who Have Positive Results" graph, one person who has multiple specimens collected in one day is only reported once. If any test of that person is positive, that person counts as a positive result. If all tests of that individual are negative, that person counts as a negative result. Laboratory tests were included if they were a test assessing for the presence of SARS-CoV-2 viral RNA, for example PCR tests. Antibody tests were excluded.

# COVID-19 Cases

Clark County, NV

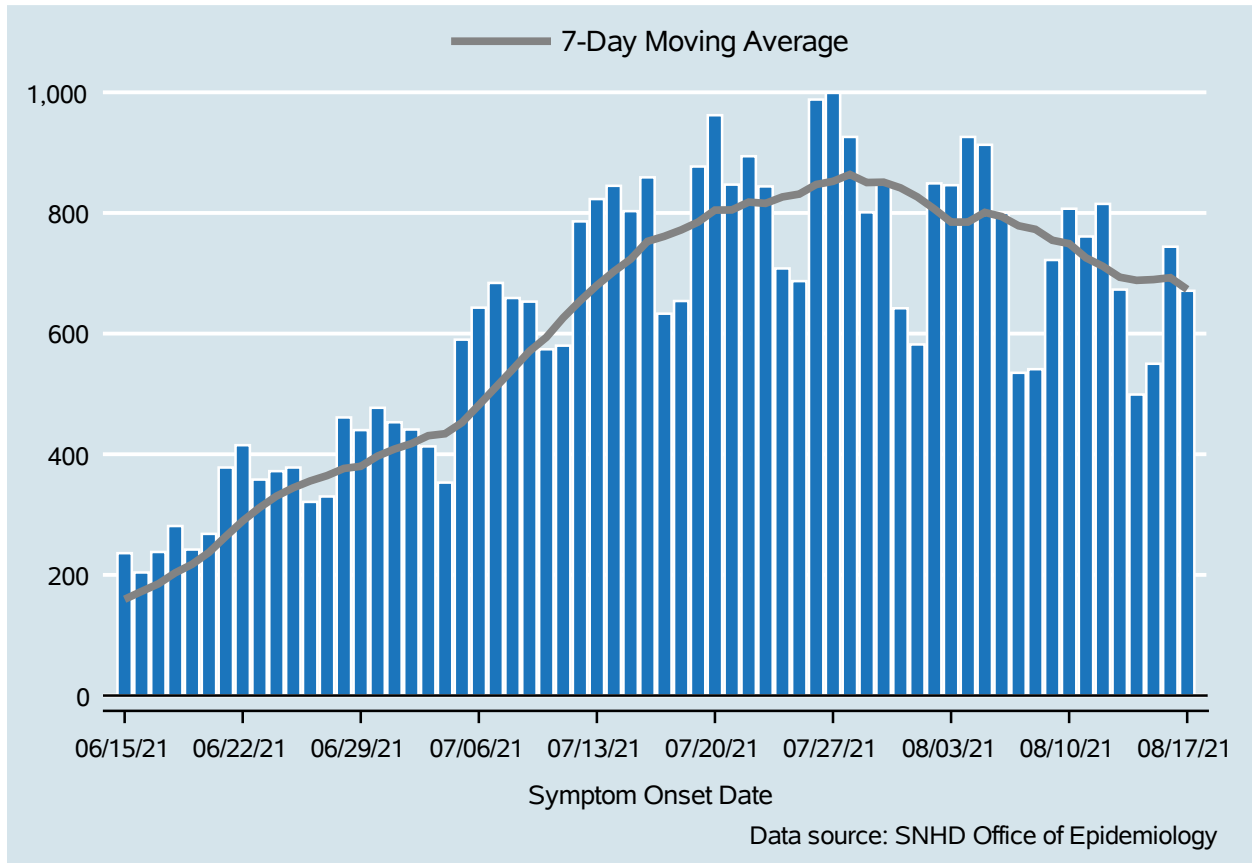


Table 1: COVID-19 Cases per Day, Clark County, NV

Date	Cases Per Day	7-Day Moving Average
Aug 04	926	784.9
Aug 05	913	800.9
Aug 06	800	794.0
Aug 07	535	778.7
Aug 08	541	772.9
Aug 09	722	754.7
Aug 10	807	749.1
Aug 11	761	725.6
Aug 12	815	711.6
Aug 13	673	693.4
Aug 14	499	688.3
Aug 15	550	689.6
Aug 16	744	692.7
Aug 17	671	673.3

# COVID-19 Hospitalizations

Clark County, NV

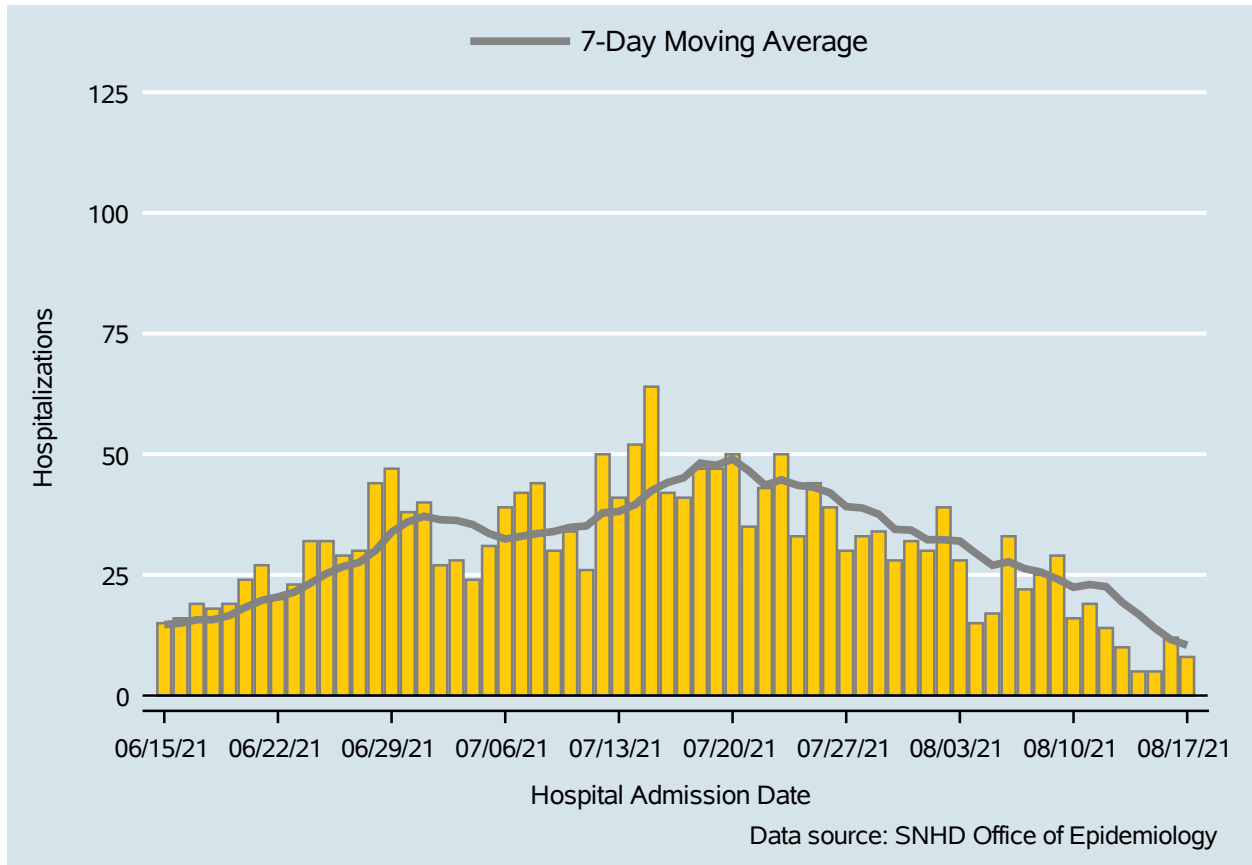


Table 2: COVID-19 Hospitalizations per Day, Clark County, NV

Date	Hospitalizations Per Day	7-Day Moving Average
Aug 04	15	29.4
Aug 05	17	27.0
Aug 06	33	27.7
Aug 07	22	26.3
Aug 08	25	25.6
Aug 09	29	24.1
Aug 10	16	22.4
Aug 11	19	23.0
Aug 12	14	22.6
Aug 13	10	19.3
Aug 14	5	16.9
Aug 15	5	14.0
Aug 16	12	11.6
Aug 17	8	10.4

# COVID-19 Deaths

Clark County, NV

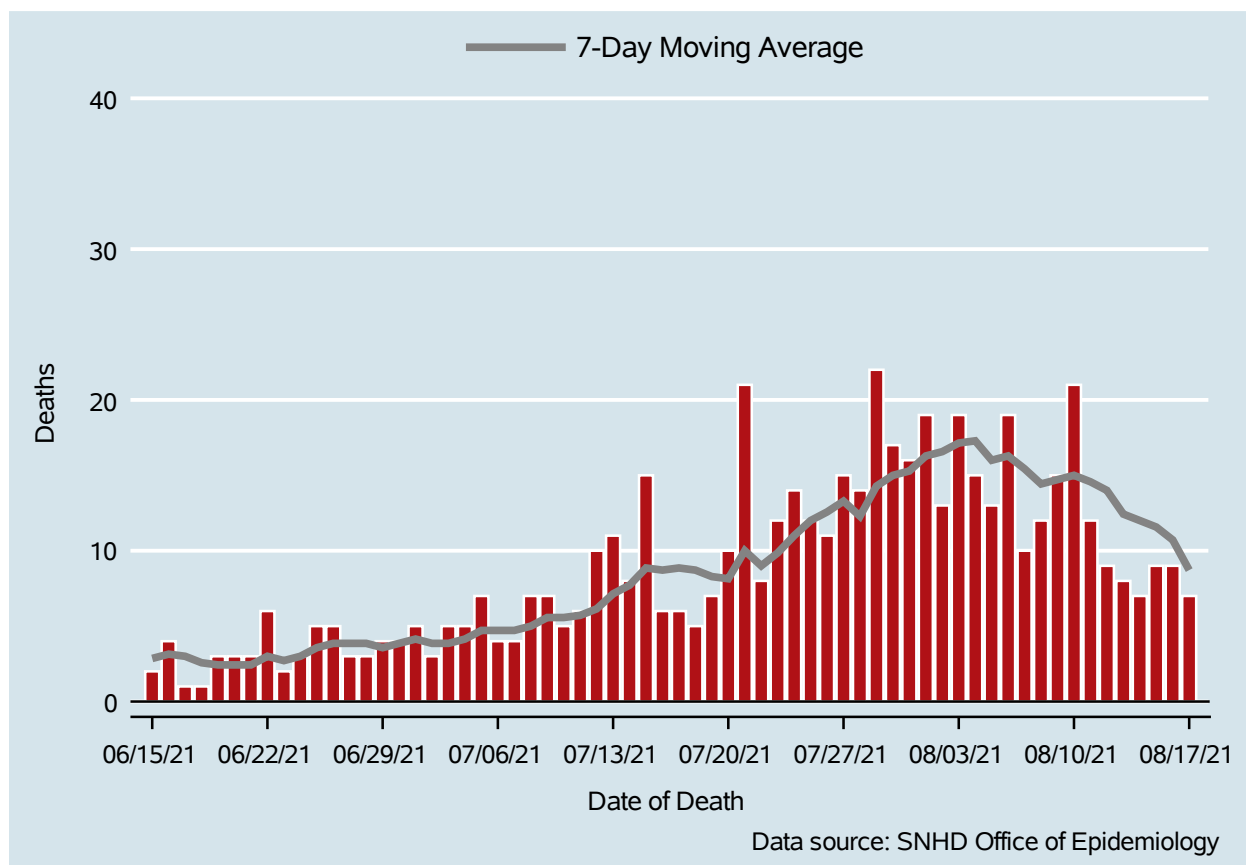


Table 3: COVID-19 Deaths per Day, Clark County, NV

Date	Deaths Per Day	7-Day Moving Average
Aug 04	15	17.3
Aug 05	13	16.0
Aug 06	19	16.3
Aug 07	10	15.4
Aug 08	12	14.4
Aug 09	15	14.7
Aug 10	21	15.0
Aug 11	12	14.6
Aug 12	9	14.0
Aug 13	8	12.4
Aug 14	7	12.0
Aug 15	9	11.6
Aug 16	9	10.7
Aug 17	7	8.7

## 7-Day Average of Daily New Cases per 100K, by Age Group (Years)

Clark County, NV

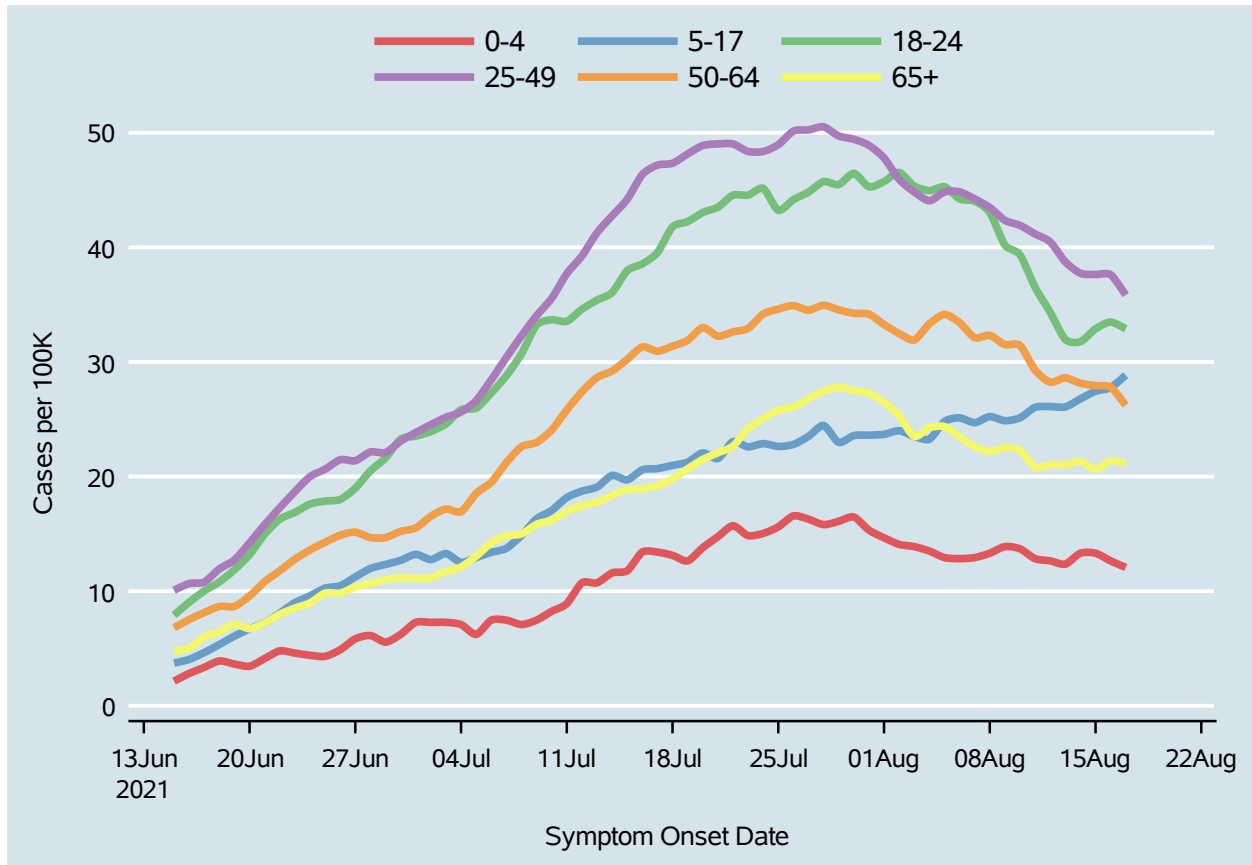
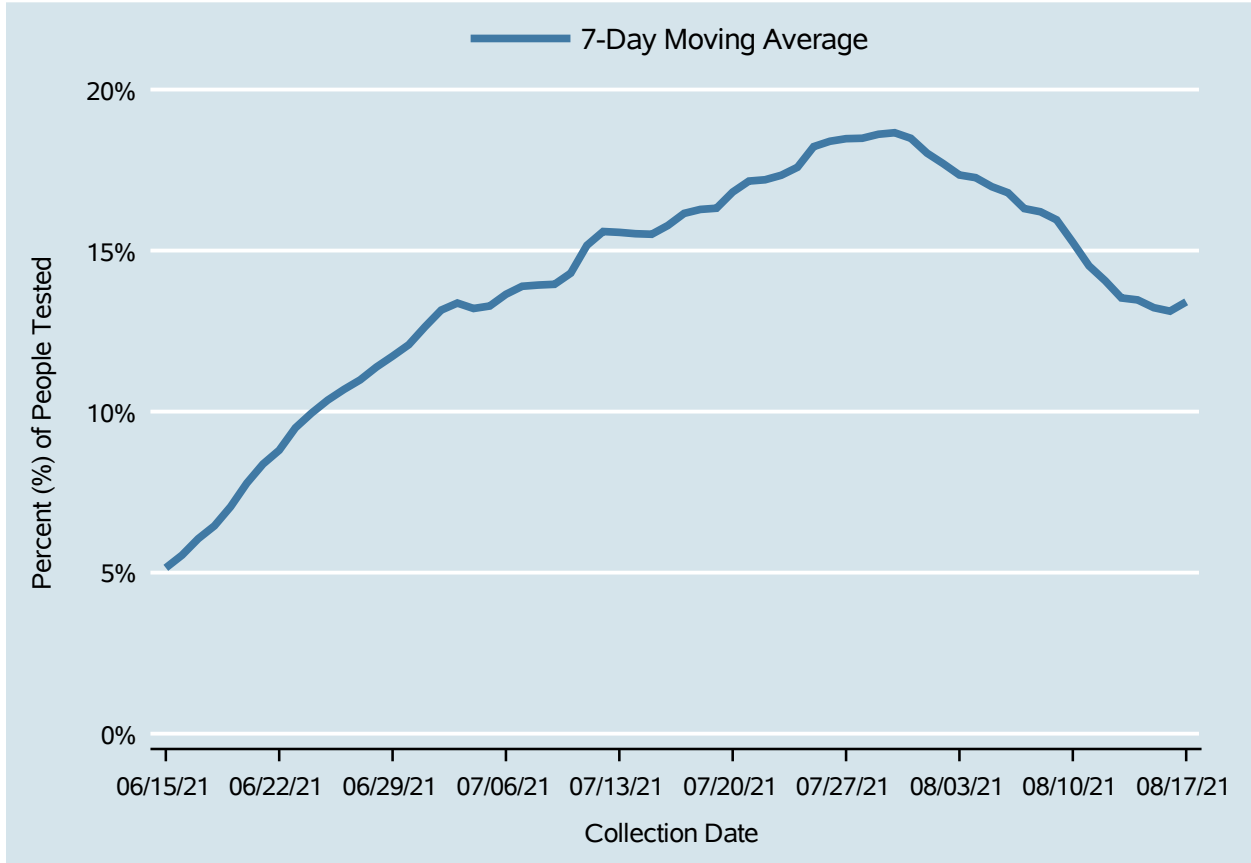


Table 4: 7-Day Average of Daily New Cases per 100K, by Age Group (Years)

Date	0-4	5-17	18-24	25-49	50-64	65+
Aug 04	13.5	23.3	44.9	44.1	33.3	24.3
Aug 05	12.9	24.8	45.3	44.8	34.1	24.4
Aug 06	12.8	25.1	44.2	44.8	33.4	23.5
Aug 07	12.9	24.7	44.0	44.2	32.1	22.6
Aug 08	13.3	25.2	43.0	43.5	32.3	22.2
Aug 09	13.9	24.9	40.2	42.4	31.5	22.5
Aug 10	13.7	25.1	39.3	41.9	31.4	22.3
Aug 11	12.8	26.0	36.5	41.2	29.3	20.8
Aug 12	12.6	26.1	34.3	40.5	28.2	21.0
Aug 13	12.4	26.1	32.0	38.7	28.6	21.0
Aug 14	13.3	26.8	31.8	37.7	28.1	21.3
Aug 15	13.3	27.4	32.9	37.6	27.9	20.6
Aug 16	12.6	27.8	33.5	37.6	27.8	21.4
Aug 17	12.1	28.8	32.9	35.8	26.2	21.2

# Percent of People Receiving COVID-19 Viral Tests Who Have Positive Results

Clark County, NV



*Report prepared by: Kellie Watkins, PhD, MS, Ying Zhang, PhD, MPH (Office of Epidemiology) and Lei Zhang, MS (Office of Informatics)*