

COVID-19 Trends

Clark County, Nevada

Document creation date: August 18, 2021

- **General notes:** This report uses surveillance data collected by the Southern Nevada Health District. Due to delays related to laboratory processing, reporting, and case investigations, data from the most recent days are less complete than data from older time points. For this reason, as of June 10, 2020 this report will not display data from the previous three days prior to the date that the report was created. As many case investigations are ongoing, all data presented in this report are considered preliminary and subject to change. Data regarding cases, hospitalizations, deaths, and labs were last updated August 18, 2021 at 12:00 AM, and data is reported up through August 14, 2021.
- **Cases:** Symptom onset date was used for aggregating cases. If symptom onset date was missing, the following dates were substituted in this order: diagnosis date, lab collection date, report date (date case was reported to SNHD), event creation date (date case was entered into TriSano, SNHD's surveillance system).
- **Hospitalizations:** Admission date was used for aggregating hospitalizations. If admission date was missing, report date was substituted. If a person had more than one hospitalization after his/her COVID-19 diagnosis, only the first admission date was used.
- **Deaths:** Date of death was used for aggregating deaths. If date of death was missing, report date was used.
- For the "7-Day Average of Daily New Cases per 100K, by Age Group (Years)" graph and table, the population data source for calculating rate estimates was from Nevada State Demographer "2019 ASRHO Estimates and Projections Summary 2000 to 2038", 2020 projection, vintage 2019. Rates for individual age categories may be based on small numbers, which may give unstable estimates.
- All graphs in this report show data from approximately 60 days prior to the date of the report.
- All tables show data from the last 14 days before the current date, with the exception of the "Percent Change in Weekly Totals from Previous Week", which displays data from the previous eight completed weeks.
- For the "Percent of People Receiving COVID-19 Viral Tests Who Have Positive Results" graph, one person who has multiple specimens collected in one day is only reported once. If any test of that person is positive, that person counts as a positive result. If all tests of that individual are negative, that person counts as a negative result. Laboratory tests were included if they were a test assessing for the presence of SARS-CoV-2 viral RNA, for example PCR tests. Antibody tests were excluded.

COVID-19 Cases

Clark County, NV

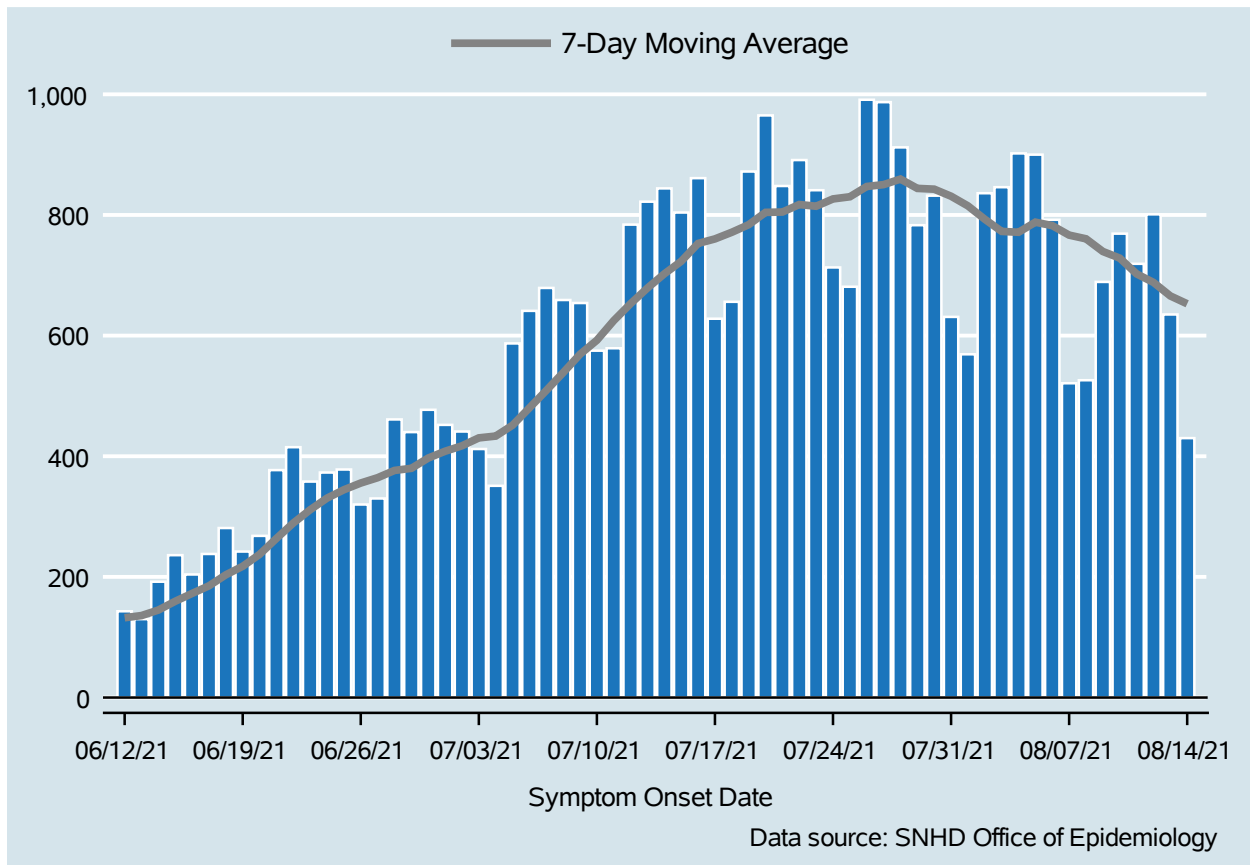


Table 1: COVID-19 Cases per Day, Clark County, NV

Date	Cases Per Day	7-Day Moving Average
Aug 01	569	815.0
Aug 02	836	792.9
Aug 03	846	772.7
Aug 04	902	771.3
Aug 05	900	788.0
Aug 06	792	782.3
Aug 07	521	766.6
Aug 08	526	760.4
Aug 09	689	739.4
Aug 10	769	728.4
Aug 11	719	702.3
Aug 12	801	688.1
Aug 13	635	665.7
Aug 14	430	652.7

COVID-19 Hospitalizations

Clark County, NV

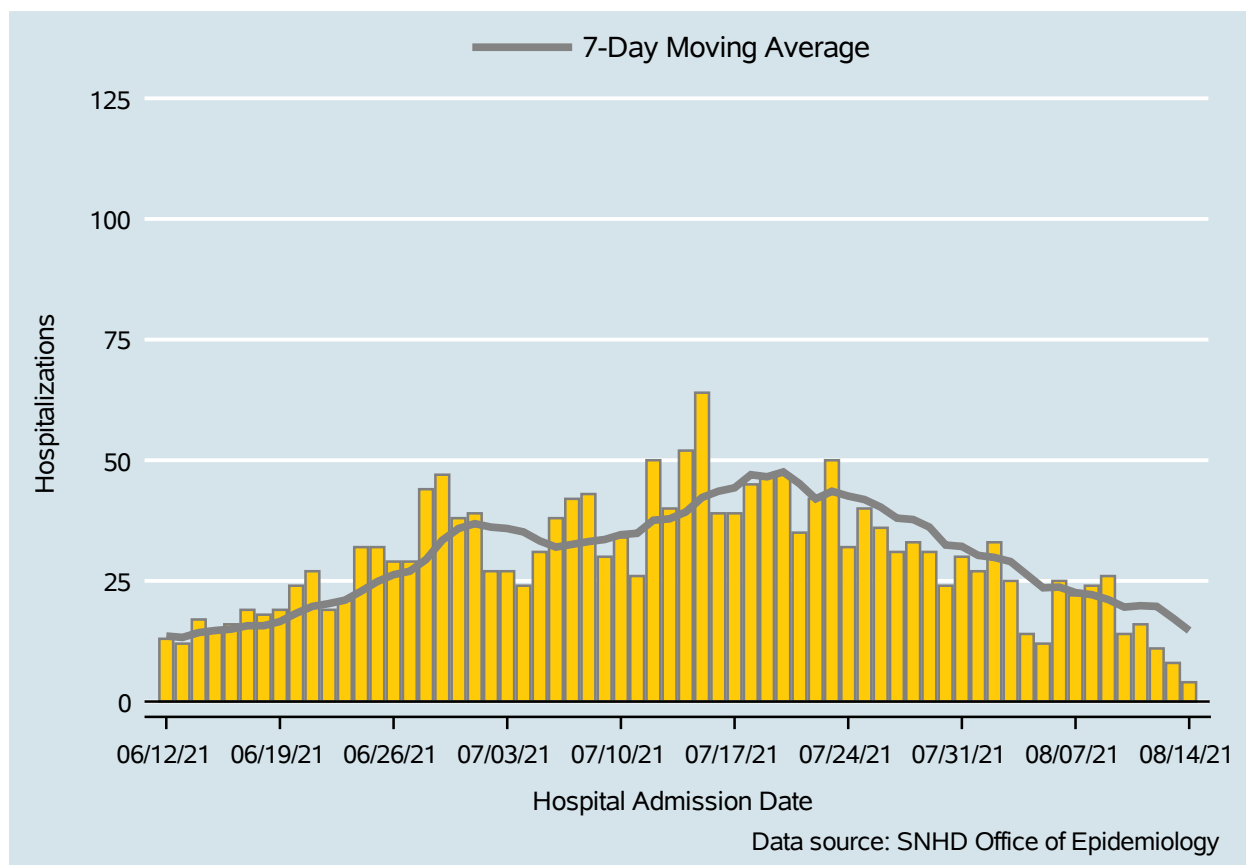


Table 2: COVID-19 Hospitalizations per Day, Clark County, NV

Date	Hospitalizations Per Day	7-Day Moving Average
Aug 01	27	30.3
Aug 02	33	29.9
Aug 03	25	29.0
Aug 04	14	26.3
Aug 05	12	23.6
Aug 06	25	23.7
Aug 07	22	22.6
Aug 08	24	22.1
Aug 09	26	21.1
Aug 10	14	19.6
Aug 11	16	19.9
Aug 12	11	19.7
Aug 13	8	17.3
Aug 14	4	14.7

COVID-19 Deaths

Clark County, NV

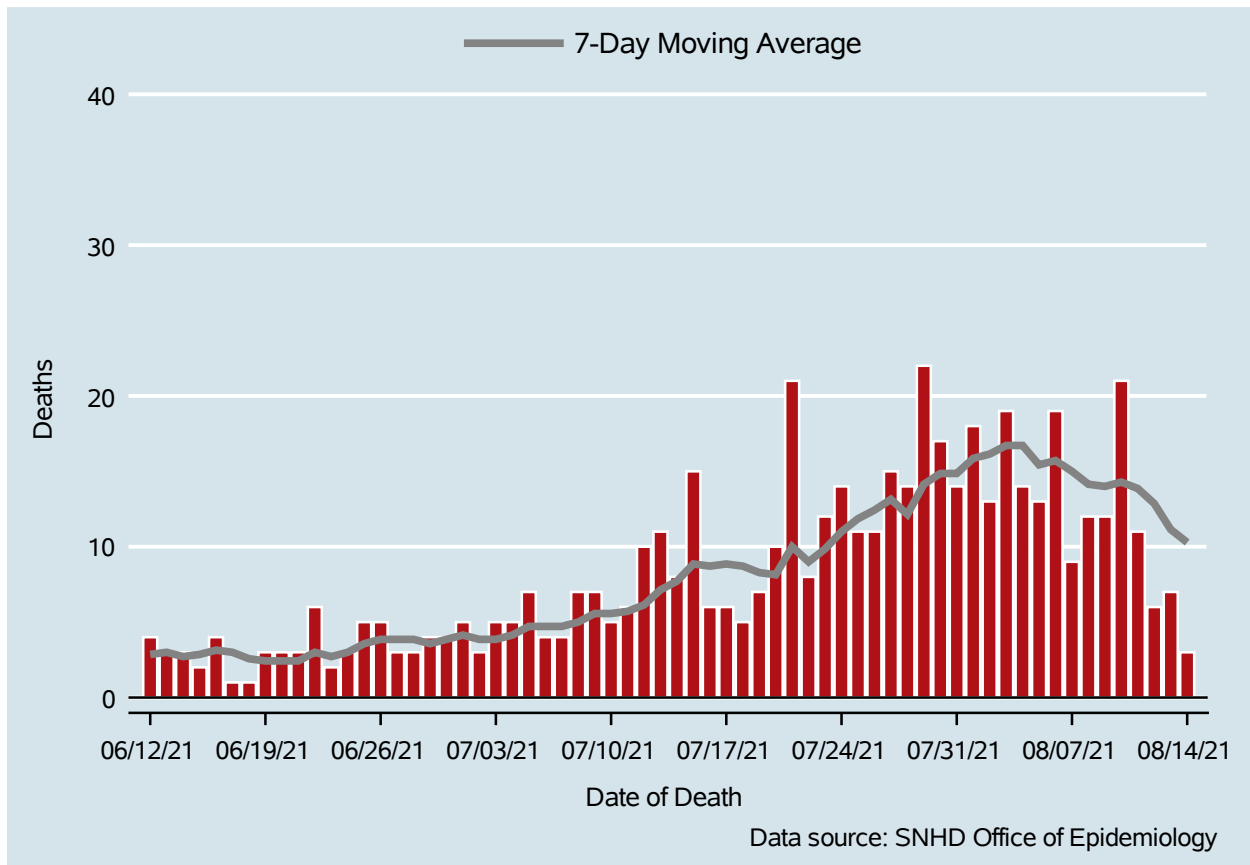


Table 3: COVID-19 Deaths per Day, Clark County, NV

Date	Deaths Per Day	7-Day Moving Average
Aug 01	18	15.9
Aug 02	13	16.1
Aug 03	19	16.7
Aug 04	14	16.7
Aug 05	13	15.4
Aug 06	19	15.7
Aug 07	9	15.0
Aug 08	12	14.1
Aug 09	12	14.0
Aug 10	21	14.3
Aug 11	11	13.9
Aug 12	6	12.9
Aug 13	7	11.1
Aug 14	3	10.3

7-Day Average of Daily New Cases per 100K, by Age Group (Years)

Clark County, NV

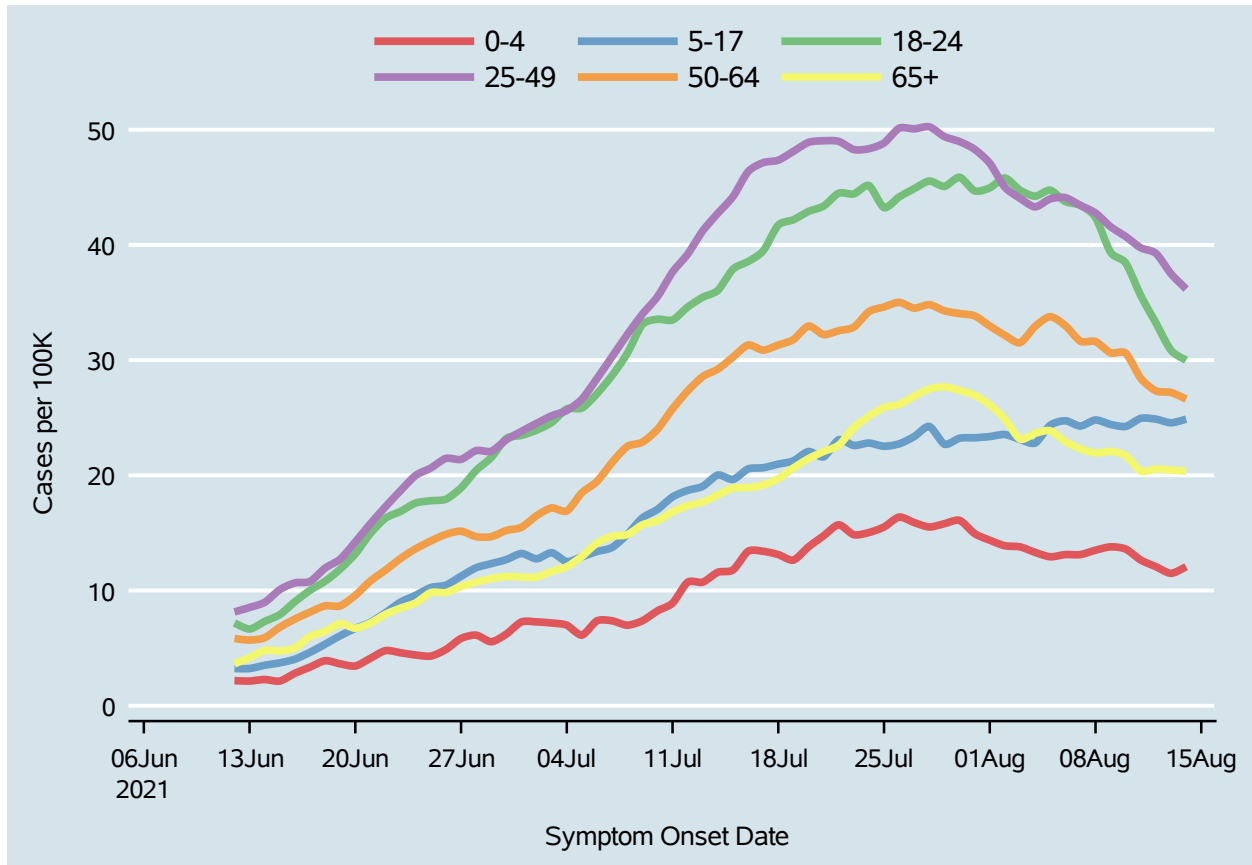
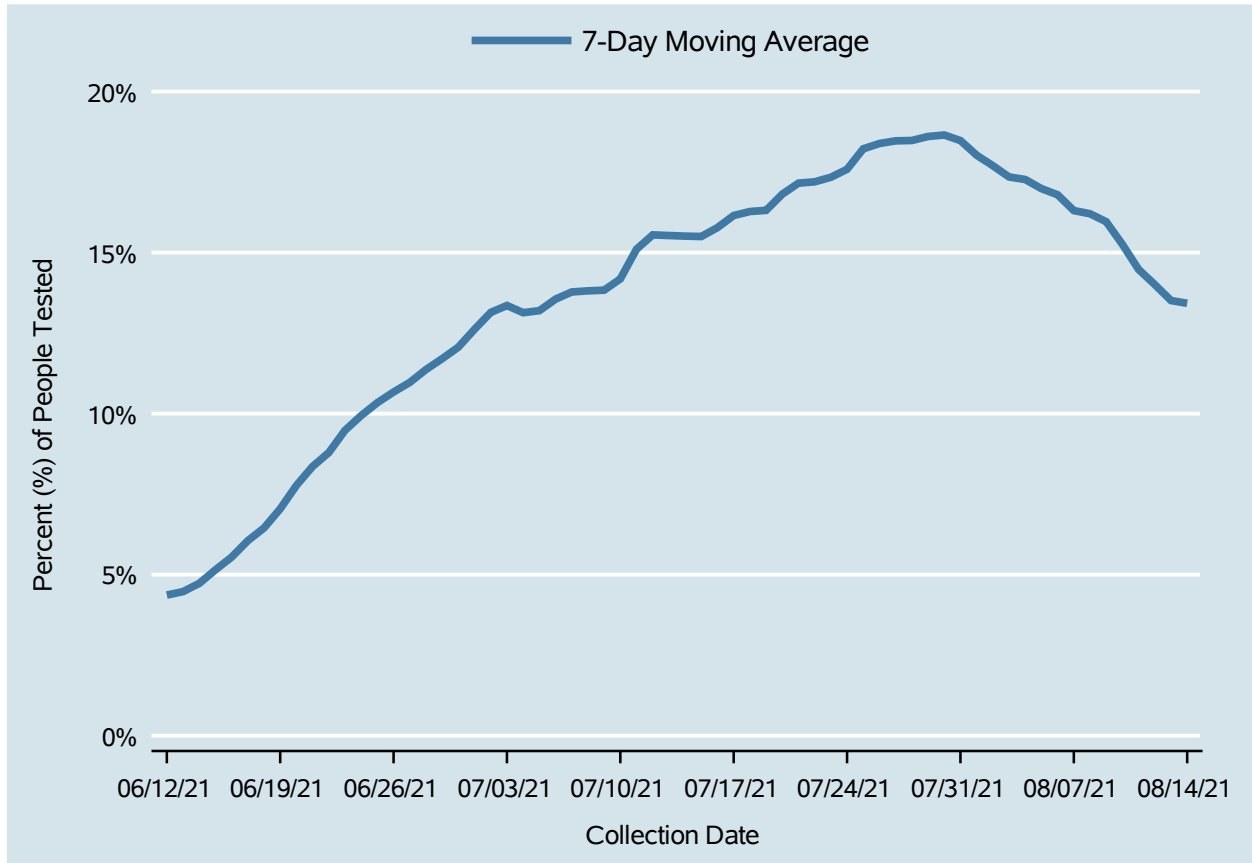


Table 4: 7-Day Average of Daily New Cases per 100K, by Age Group (Years)

Date	0-4	5-17	18-24	25-49	50-64	65+
Aug 01	14.4	23.4	44.9	47.1	33.0	26.1
Aug 02	13.9	23.5	45.8	45.0	32.2	24.9
Aug 03	13.8	23.1	44.7	44.0	31.5	23.1
Aug 04	13.3	22.8	44.2	43.3	32.9	23.6
Aug 05	12.9	24.3	44.7	44.0	33.8	23.9
Aug 06	13.1	24.7	43.8	44.1	33.0	22.9
Aug 07	13.1	24.3	43.4	43.4	31.6	22.3
Aug 08	13.5	24.8	42.4	42.8	31.6	21.9
Aug 09	13.8	24.4	39.3	41.6	30.6	22.1
Aug 10	13.6	24.2	38.4	40.7	30.6	21.7
Aug 11	12.6	24.9	35.6	39.7	28.4	20.4
Aug 12	12.1	24.9	33.2	39.3	27.3	20.5
Aug 13	11.5	24.6	30.8	37.5	27.2	20.5
Aug 14	12.1	24.9	30.0	36.2	26.6	20.4

Percent of People Receiving COVID-19 Viral Tests Who Have Positive Results

Clark County, NV



Report prepared by: Kellie Watkins, PhD, MS, Ying Zhang, PhD, MPH (Office of Epidemiology) and Lei Zhang, MS (Office of Informatics)