

COVID-19 Trends

Clark County, Nevada

Document creation date: August 16, 2021

- General notes: This report uses surveillance data collected by the Southern Nevada Health District. Due to delays related to laboratory processing, reporting, and case investigations, data from the most recent days are less complete than data from older time points. For this reason, as of June 10, 2020 this report will not display data from the previous three days prior to the date that the report was created. As many case investigations are ongoing, all data presented in this report are considered preliminary and subject to change. Data regarding cases, hospitalizations, deaths, and labs were last updated August 16, 2021 at 12:00 AM, and data is reported up through August 12, 2021.
- Cases: Symptom onset date was used for aggregating cases. If symptom onset date was missing, the following dates were substituted in this order: diagnosis date, lab collection date, report date (date case was reported to SNHD), event creation date (date case was entered into TriSano, SNHD's surveillance system).
- Hospitalizations: Admission date was used for aggregating hospitalizations. If admission date was missing, report date was substituted. If a person had more than one hospitalization after his/her COVID-19 diagnosis, only the first admission date was used.
- Deaths: Date of death was used for aggregating deaths. If date of death was missing, report date was used.
- For the "7-Day Average of Daily New Cases per 100K, by Age Group (Years)" graph and table, the population data source for calculating rate estimates was from Nevada State Demographer "2019 ASRHO Estimates and Projections Summary 2000 to 2038", 2020 projection, vintage 2019. Rates for individual age categories may be based on small numbers, which may give unstable estimates.
- All graphs in this report show data from approximately 60 days prior to the date of the report.
- All tables show data from the last 14 days before the current date, with the exception of the "Percent Change in Weekly Totals from Previous Week", which displays data from the previous eight completed weeks.
- For the "Percent of People Receiving COVID-19 Viral Tests Who Have Positive Results" graph, one person who has multiple specimens collected in one day is only reported once. If any test of that person is positive, that person counts as a positive result. If all tests of that individual are negative, that person counts as a negative result. Laboratory tests were included if they were a test assessing for the presence of SARS-CoV-2 viral RNA, for example PCR tests. Antibody tests were excluded.

COVID-19 Cases

Clark County, NV

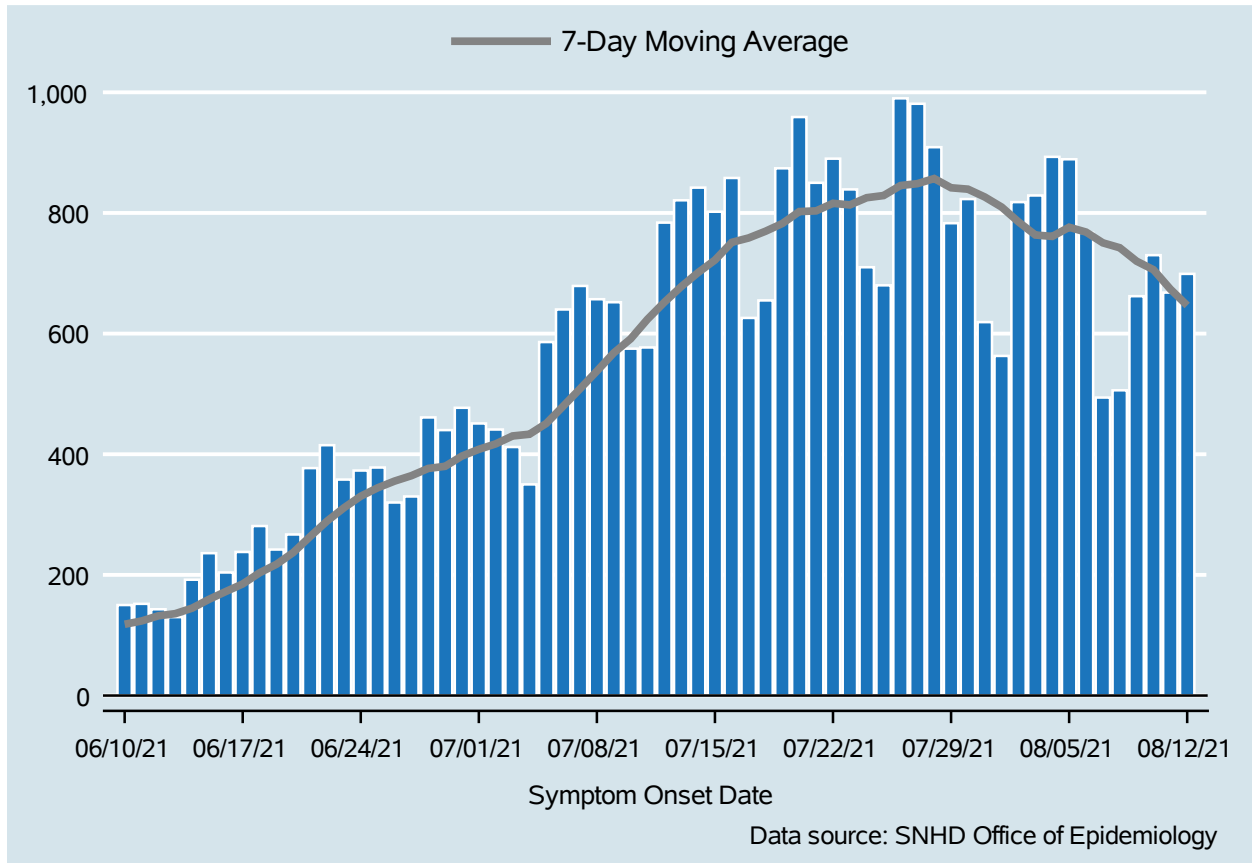


Table 1: COVID-19 Cases per Day, Clark County, NV

Date	Cases Per Day	7-Day Moving Average
Jul 30	823	839.4
Jul 31	619	826.4
Aug 01	563	809.7
Aug 02	818	785.1
Aug 03	829	763.4
Aug 04	893	761.1
Aug 05	889	776.3
Aug 06	767	768.3
Aug 07	494	750.4
Aug 08	506	742.3
Aug 09	662	720.0
Aug 10	730	705.9
Aug 11	668	673.7
Aug 12	699	646.6

COVID-19 Hospitalizations

Clark County, NV

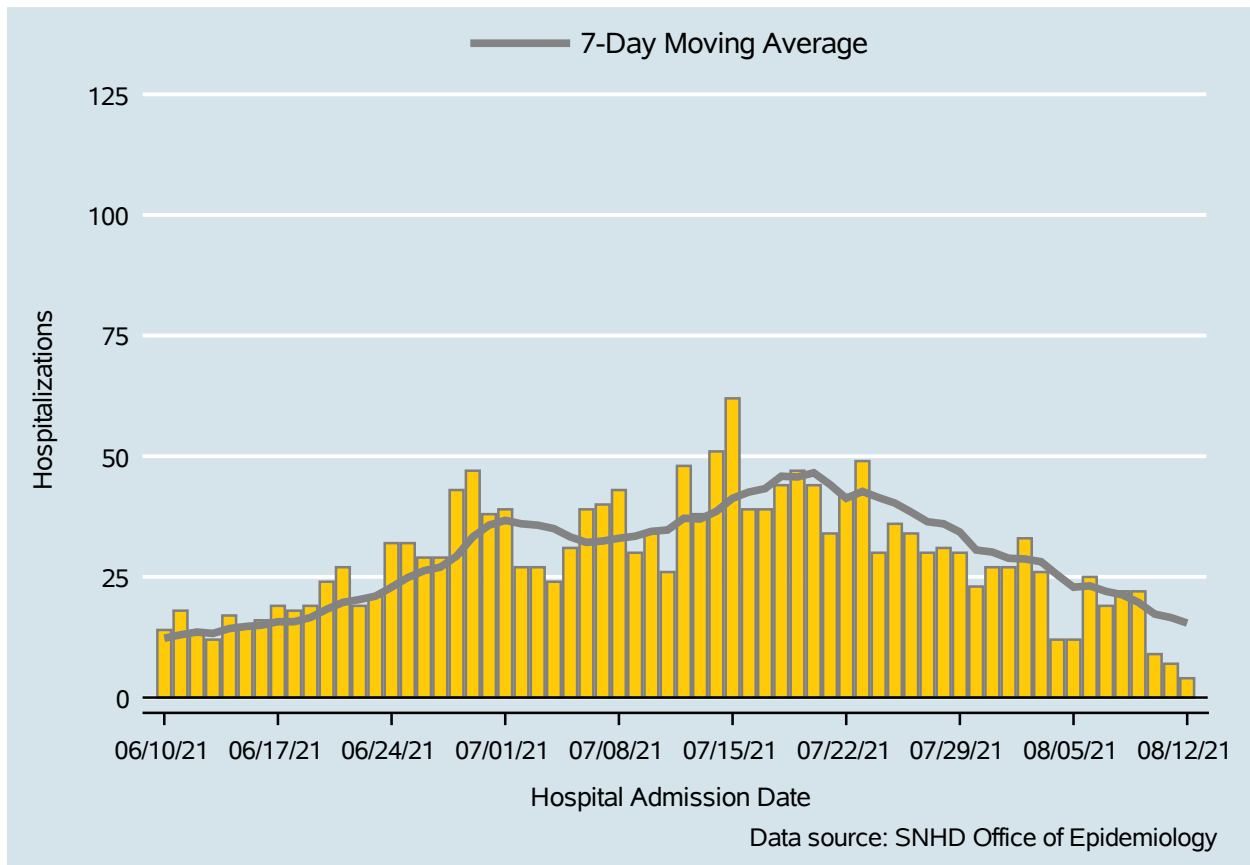


Table 2: COVID-19 Hospitalizations per Day, Clark County, NV

Date	Hospitalizations Per Day	7-Day Moving Average
Jul 30	23	30.6
Jul 31	27	30.1
Aug 01	27	28.9
Aug 02	33	28.7
Aug 03	26	28.1
Aug 04	12	25.4
Aug 05	12	22.9
Aug 06	25	23.1
Aug 07	19	22.0
Aug 08	22	21.3
Aug 09	22	19.7
Aug 10	9	17.3
Aug 11	7	16.6
Aug 12	4	15.4

COVID-19 Deaths

Clark County, NV

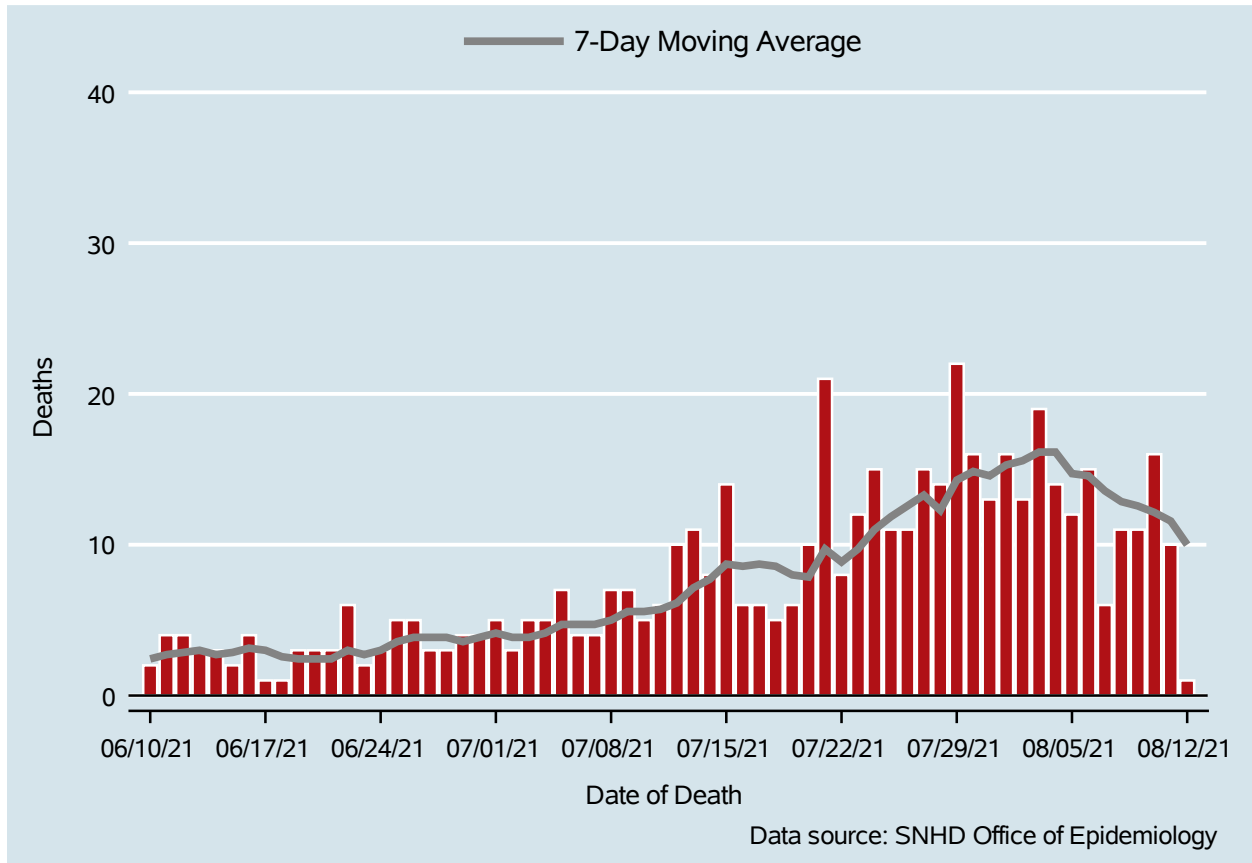


Table 3: COVID-19 Deaths per Day, Clark County, NV

Date	Deaths Per Day	7-Day Moving Average
Jul 30	16	14.9
Jul 31	13	14.6
Aug 01	16	15.3
Aug 02	13	15.6
Aug 03	19	16.1
Aug 04	14	16.1
Aug 05	12	14.7
Aug 06	15	14.6
Aug 07	6	13.6
Aug 08	11	12.9
Aug 09	11	12.6
Aug 10	16	12.1
Aug 11	10	11.6
Aug 12	1	10.0

7-Day Average of Daily New Cases per 100K, by Age Group (Years)

Clark County, NV

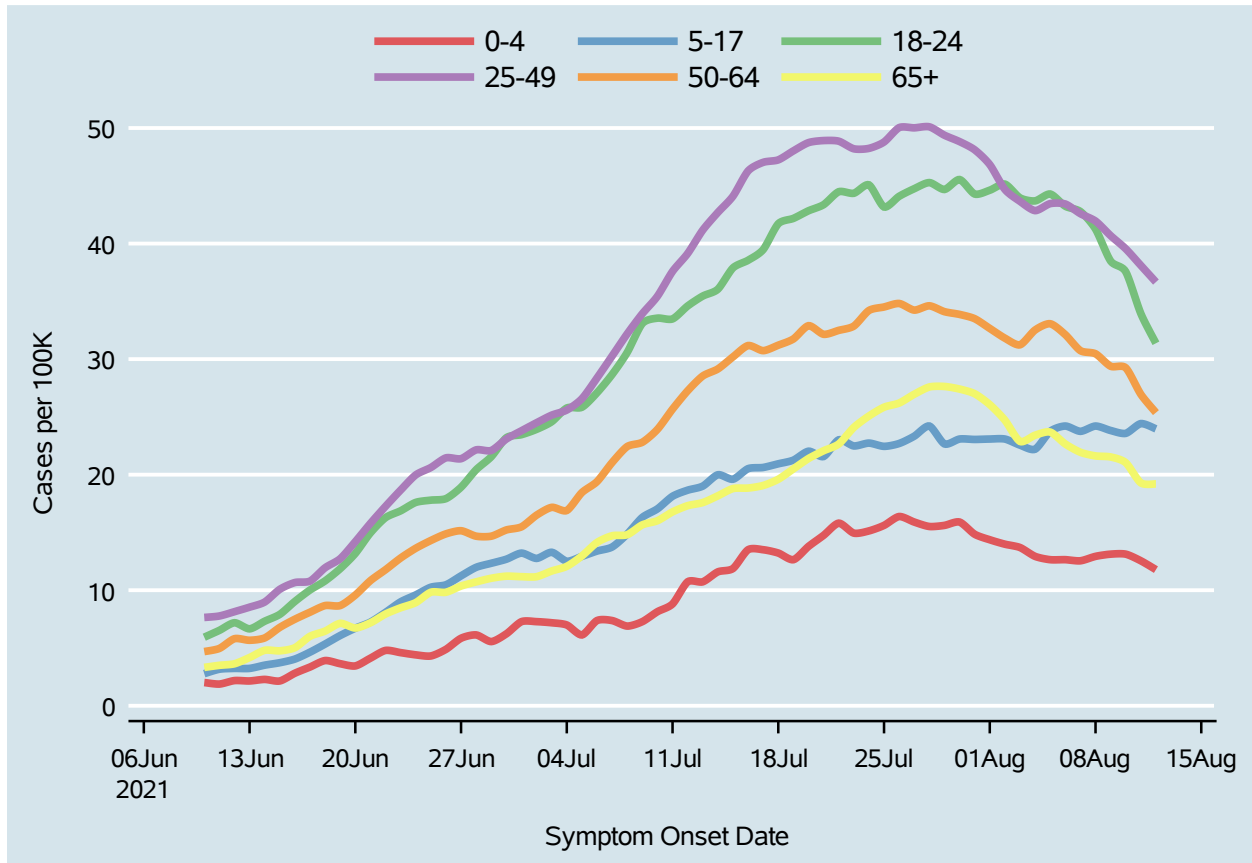
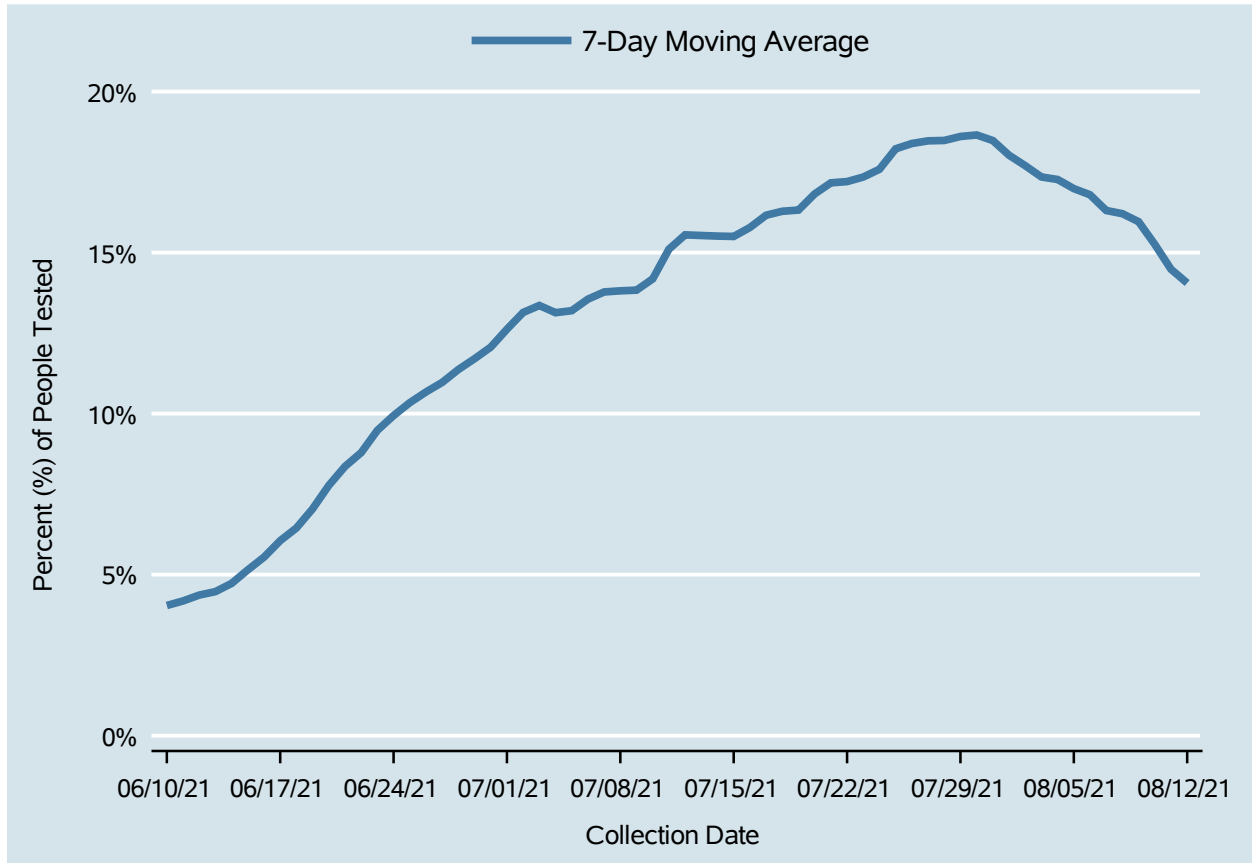


Table 4: 7-Day Average of Daily New Cases per 100K, by Age Group (Years)

Date	0-4	5-17	18-24	25-49	50-64	65+
Jul 30	15.9	23.1	45.5	48.8	33.9	27.4
Jul 31	14.8	23.0	44.3	48.1	33.5	27.0
Aug 01	14.4	23.1	44.6	46.8	32.7	26.1
Aug 02	14.0	23.1	45.1	44.7	31.8	24.7
Aug 03	13.7	22.6	44.0	43.7	31.2	22.9
Aug 04	12.9	22.2	43.7	42.9	32.5	23.4
Aug 05	12.6	23.8	44.3	43.5	33.1	23.7
Aug 06	12.6	24.2	43.2	43.4	32.1	22.7
Aug 07	12.5	23.8	42.8	42.6	30.7	21.9
Aug 08	12.9	24.2	41.3	41.9	30.5	21.6
Aug 09	13.1	23.8	38.5	40.7	29.4	21.5
Aug 10	13.1	23.6	37.6	39.5	29.2	21.0
Aug 11	12.5	24.4	33.9	38.1	27.0	19.3
Aug 12	11.8	24.0	31.4	36.7	25.4	19.2

Percent of People Receiving COVID-19 Viral Tests Who Have Positive Results

Clark County, NV



Report prepared by: Kellie Watkins, PhD, MS, Ying Zhang, PhD, MPH (Office of Epidemiology) and Lei Zhang, MS (Office of Informatics)