

COVID-19 Trends

Clark County, Nevada

Document creation date: August 15, 2021

- **General notes:** This report uses surveillance data collected by the Southern Nevada Health District. Due to delays related to laboratory processing, reporting, and case investigations, data from the most recent days are less complete than data from older time points. For this reason, as of June 10, 2020 this report will not display data from the previous three days prior to the date that the report was created. As many case investigations are ongoing, all data presented in this report are considered preliminary and subject to change. Data regarding cases, hospitalizations, deaths, and labs were last updated August 15, 2021 at 12:00 AM, and data is reported up through August 11, 2021.
- **Cases:** Symptom onset date was used for aggregating cases. If symptom onset date was missing, the following dates were substituted in this order: diagnosis date, lab collection date, report date (date case was reported to SNHD), event creation date (date case was entered into TriSano, SNHD's surveillance system).
- **Hospitalizations:** Admission date was used for aggregating hospitalizations. If admission date was missing, report date was substituted. If a person had more than one hospitalization after his/her COVID-19 diagnosis, only the first admission date was used.
- **Deaths:** Date of death was used for aggregating deaths. If date of death was missing, report date was used.
- For the "7-Day Average of Daily New Cases per 100K, by Age Group (Years)" graph and table, the population data source for calculating rate estimates was from Nevada State Demographer "2019 ASRHO Estimates and Projections Summary 2000 to 2038", 2020 projection, vintage 2019. Rates for individual age categories may be based on small numbers, which may give unstable estimates.
- All graphs in this report show data from approximately 60 days prior to the date of the report.
- All tables show data from the last 14 days before the current date, with the exception of the "Percent Change in Weekly Totals from Previous Week", which displays data from the previous eight completed weeks.
- For the "Percent of People Receiving COVID-19 Viral Tests Who Have Positive Results" graph, one person who has multiple specimens collected in one day is only reported once. If any test of that person is positive, that person counts as a positive result. If all tests of that individual are negative, that person counts as a negative result. Laboratory tests were included if they were a test assessing for the presence of SARS-CoV-2 viral RNA, for example PCR tests. Antibody tests were excluded.

COVID-19 Cases

Clark County, NV

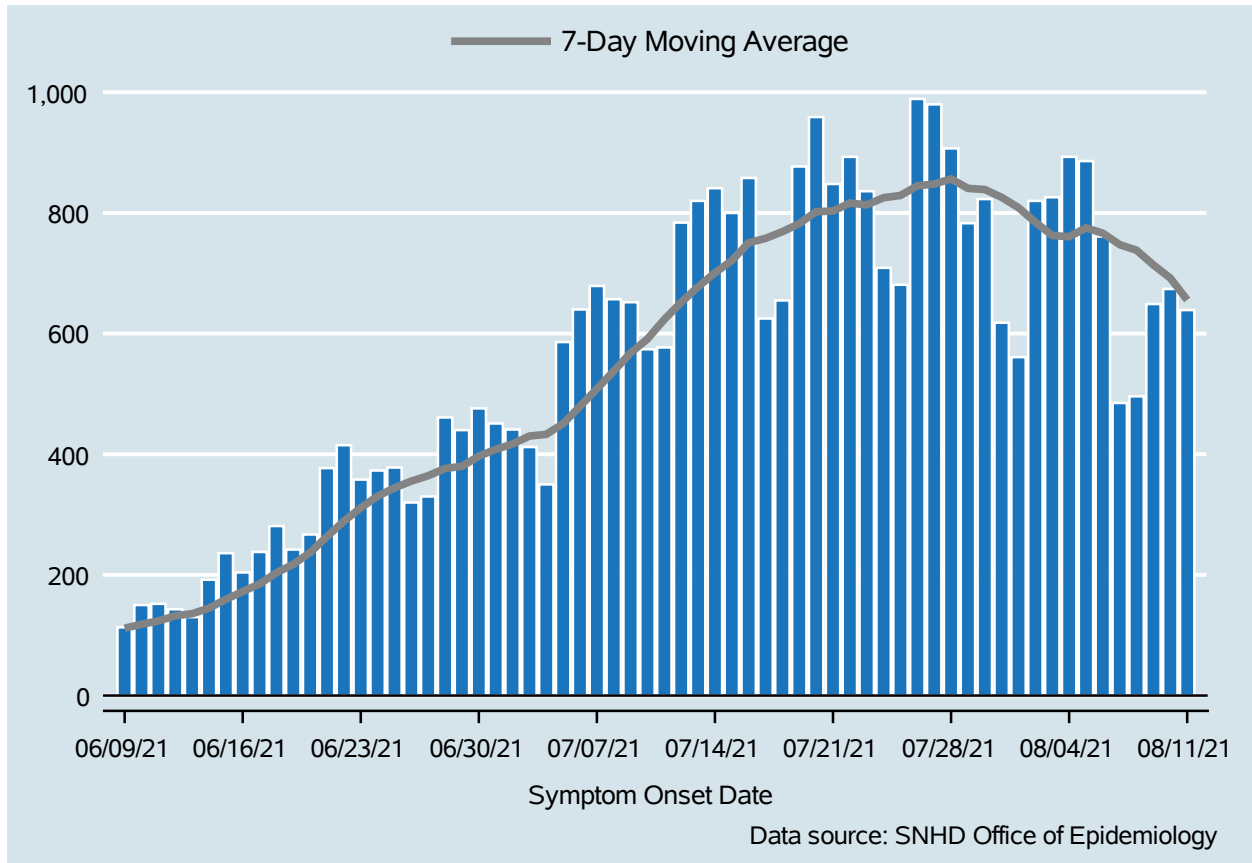


Table 1: COVID-19 Cases per Day, Clark County, NV

Date	Cases Per Day	7-Day Moving Average
Jul 29	783	840.7
Jul 30	823	838.9
Jul 31	618	825.9
Aug 01	561	808.7
Aug 02	820	784.6
Aug 03	826	762.6
Aug 04	893	760.6
Aug 05	886	775.3
Aug 06	761	766.4
Aug 07	485	747.4
Aug 08	496	738.1
Aug 09	649	713.7
Aug 10	674	692.0
Aug 11	639	655.7

COVID-19 Hospitalizations

Clark County, NV

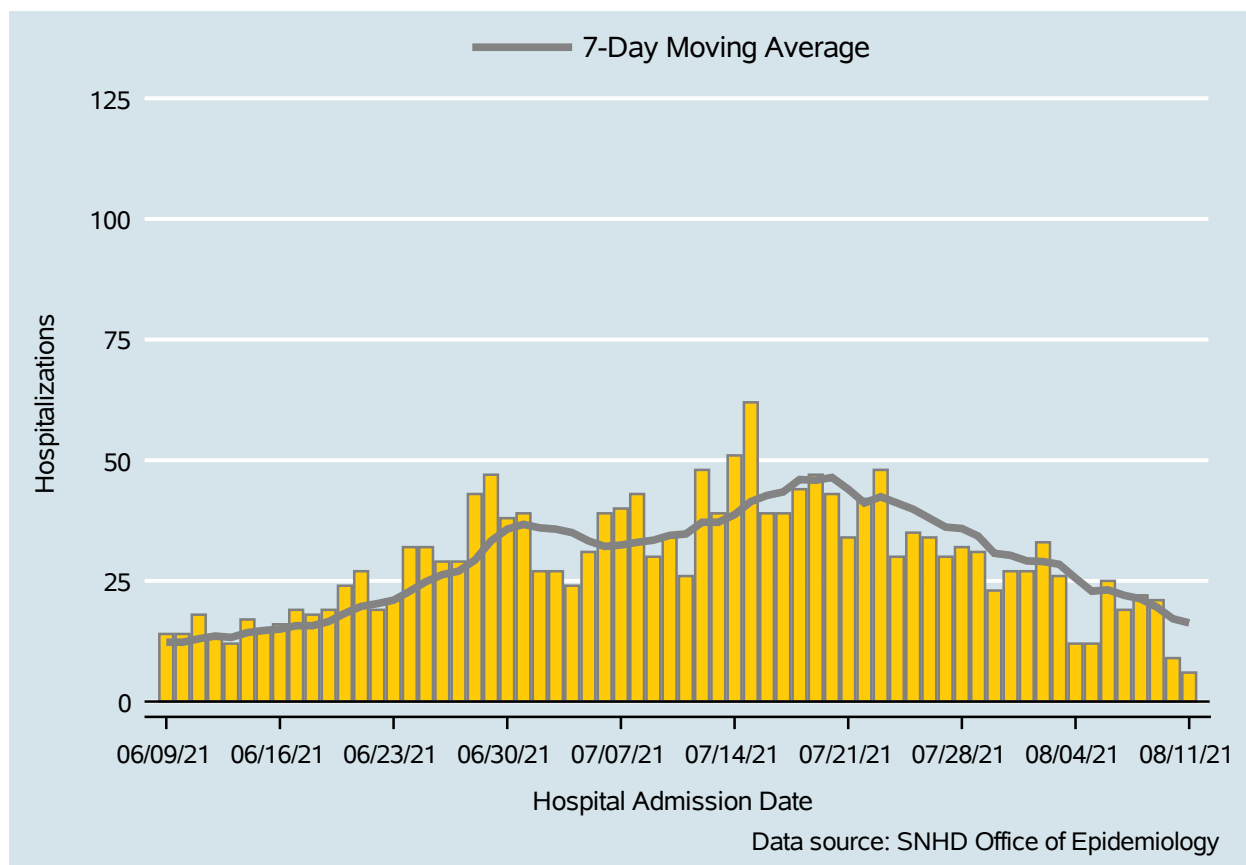


Table 2: COVID-19 Hospitalizations per Day, Clark County, NV

Date	Hospitalizations Per Day	7-Day Moving Average
Jul 29	31	34.3
Jul 30	23	30.7
Jul 31	27	30.3
Aug 01	27	29.1
Aug 02	33	29.0
Aug 03	26	28.4
Aug 04	12	25.6
Aug 05	12	22.9
Aug 06	25	23.1
Aug 07	19	22.0
Aug 08	22	21.3
Aug 09	21	19.6
Aug 10	9	17.1
Aug 11	6	16.3

COVID-19 Deaths

Clark County, NV

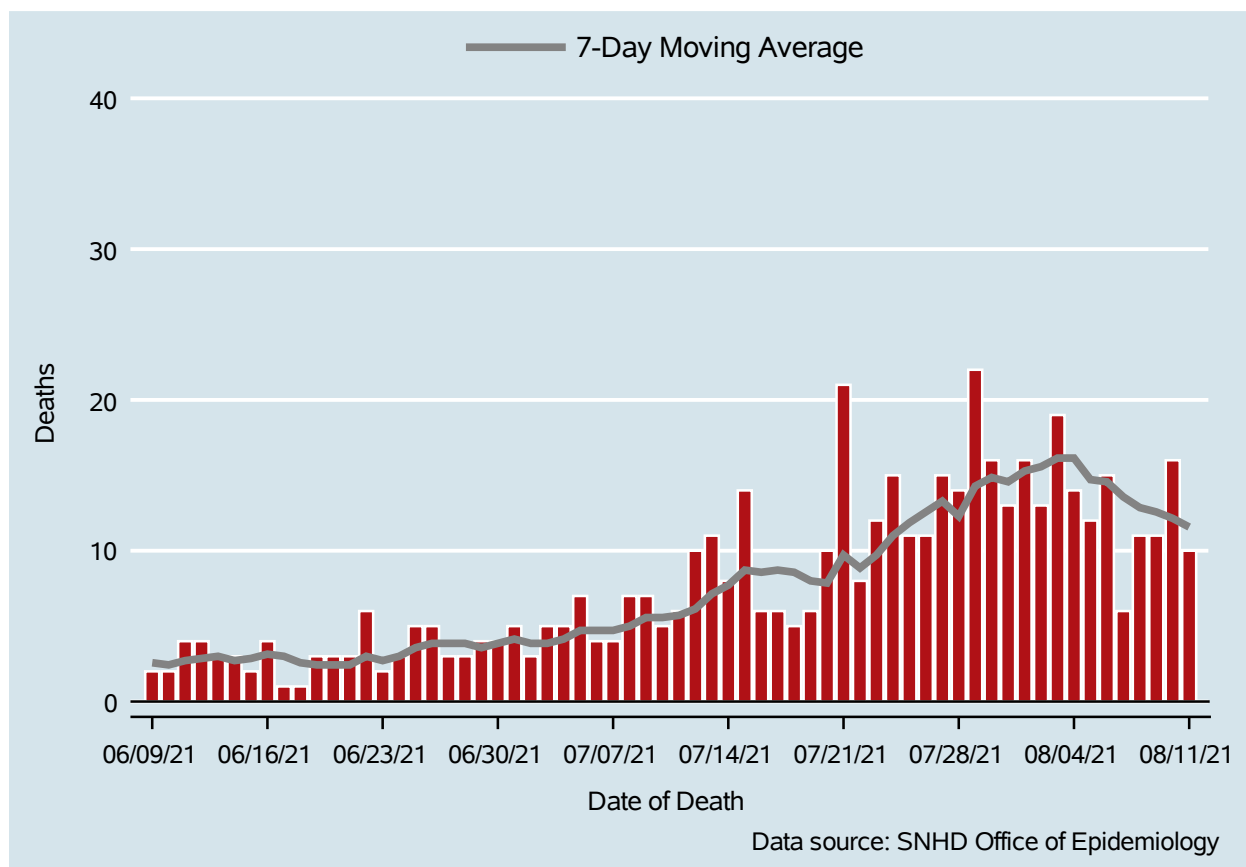


Table 3: COVID-19 Deaths per Day, Clark County, NV

Date	Deaths Per Day	7-Day Moving Average
Jul 29	22	14.3
Jul 30	16	14.9
Jul 31	13	14.6
Aug 01	16	15.3
Aug 02	13	15.6
Aug 03	19	16.1
Aug 04	14	16.1
Aug 05	12	14.7
Aug 06	15	14.6
Aug 07	6	13.6
Aug 08	11	12.9
Aug 09	11	12.6
Aug 10	16	12.1
Aug 11	10	11.6

7-Day Average of Daily New Cases per 100K, by Age Group (Years)

Clark County, NV

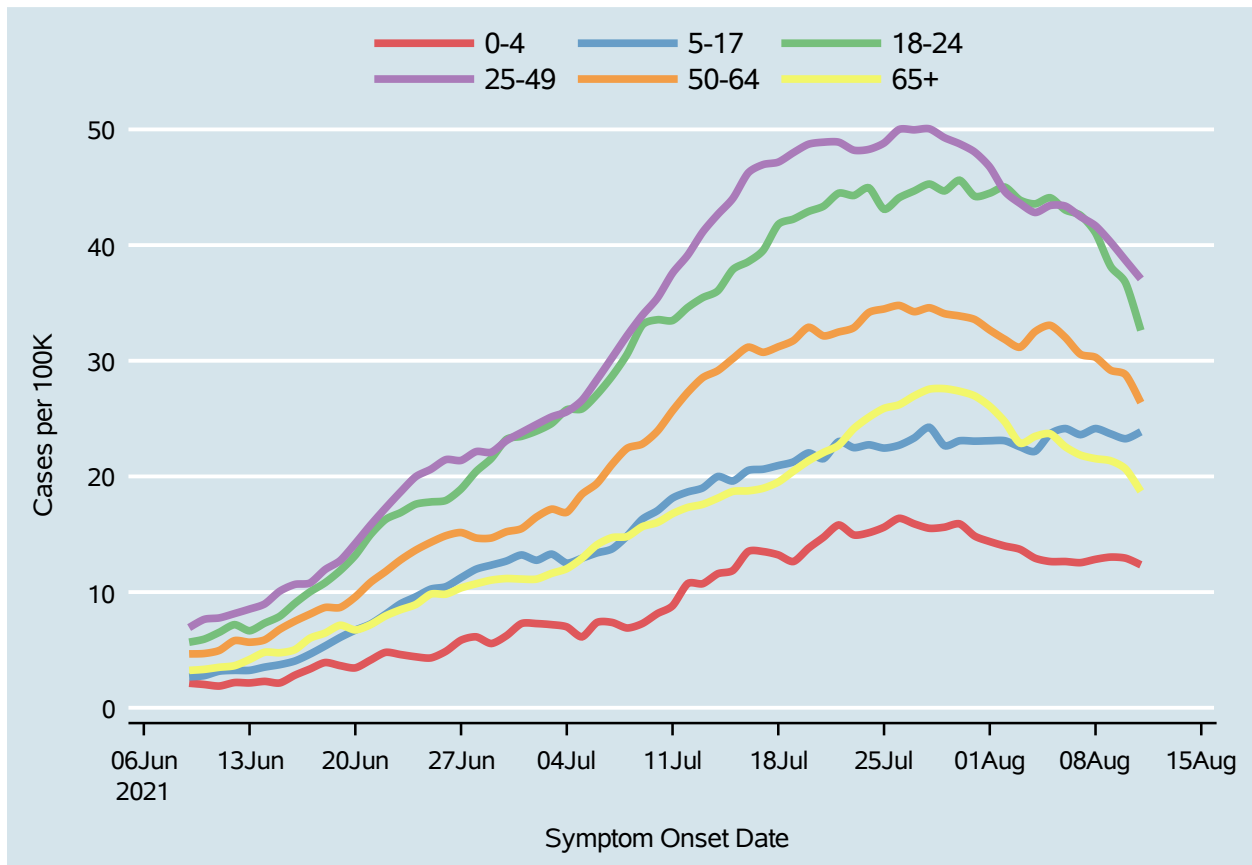
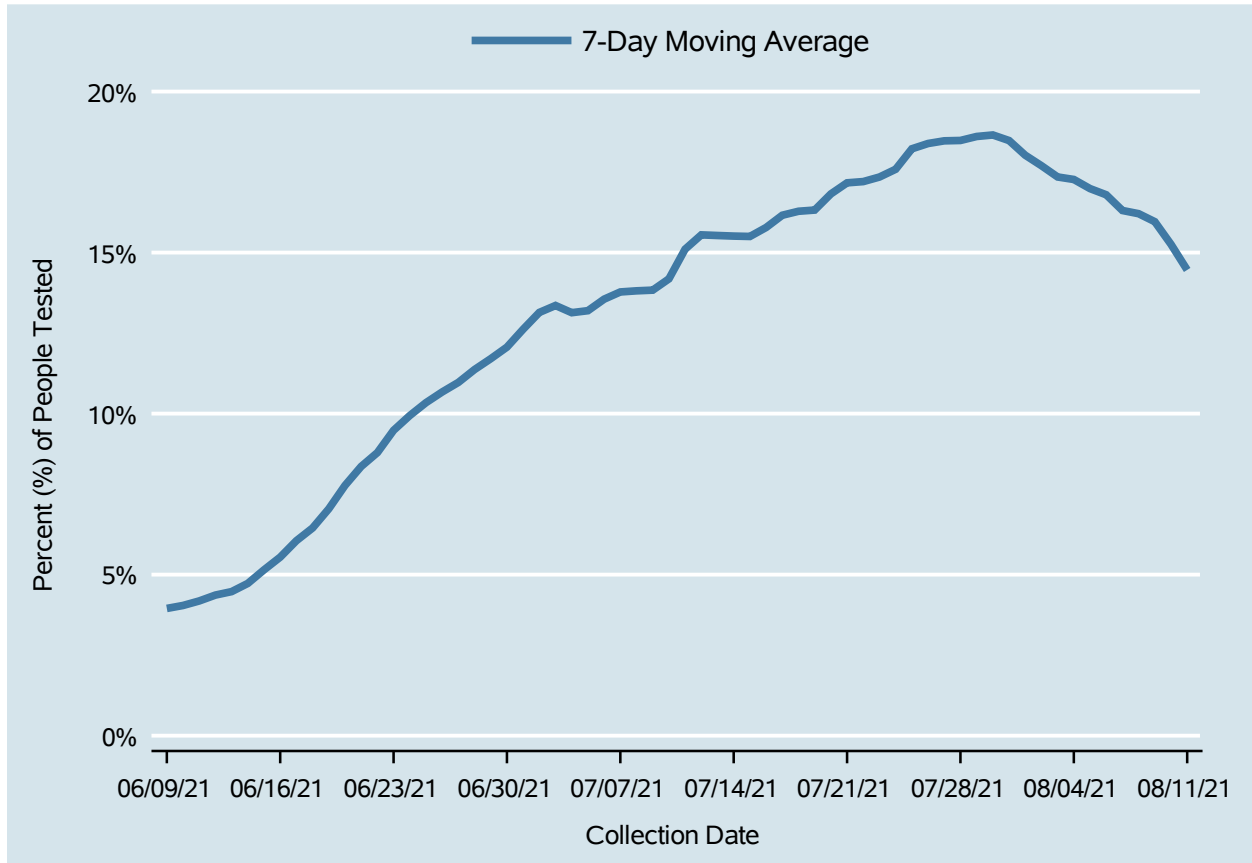


Table 4: 7-Day Average of Daily New Cases per 100K, by Age Group (Years)

Date	0-4	5-17	18-24	25-49	50-64	65+
Jul 29	15.6	22.7	44.7	49.3	34.1	27.6
Jul 30	15.9	23.1	45.6	48.8	33.9	27.4
Jul 31	14.8	23.0	44.2	48.0	33.6	27.0
Aug 01	14.4	23.1	44.5	46.7	32.7	26.1
Aug 02	14.0	23.1	45.0	44.6	31.8	24.7
Aug 03	13.7	22.6	43.9	43.6	31.2	22.9
Aug 04	12.9	22.2	43.6	42.8	32.5	23.5
Aug 05	12.6	23.7	44.1	43.4	33.1	23.7
Aug 06	12.6	24.1	43.0	43.4	32.0	22.6
Aug 07	12.5	23.6	42.6	42.5	30.6	21.8
Aug 08	12.8	24.1	41.1	41.7	30.3	21.5
Aug 09	13.0	23.7	38.2	40.3	29.2	21.4
Aug 10	12.9	23.3	36.7	38.7	28.8	20.6
Aug 11	12.4	23.9	32.6	37.1	26.4	18.7

Percent of People Receiving COVID-19 Viral Tests Who Have Positive Results

Clark County, NV



Report prepared by: Kellie Watkins, PhD, MS, Ying Zhang, PhD, MPH (Office of Epidemiology) and Lei Zhang, MS (Office of Informatics)