

COVID-19 Trends

Clark County, Nevada

Document creation date: August 13, 2021

- **General notes:** This report uses surveillance data collected by the Southern Nevada Health District. Due to delays related to laboratory processing, reporting, and case investigations, data from the most recent days are less complete than data from older time points. For this reason, as of June 10, 2020 this report will not display data from the previous three days prior to the date that the report was created. As many case investigations are ongoing, all data presented in this report are considered preliminary and subject to change. Data regarding cases, hospitalizations, deaths, and labs were last updated August 13, 2021 at 12:00 AM, and data is reported up through August 9, 2021.
- **Cases:** Symptom onset date was used for aggregating cases. If symptom onset date was missing, the following dates were substituted in this order: diagnosis date, lab collection date, report date (date case was reported to SNHD), event creation date (date case was entered into TriSano, SNHD's surveillance system).
- **Hospitalizations:** Admission date was used for aggregating hospitalizations. If admission date was missing, report date was substituted. If a person had more than one hospitalization after his/her COVID-19 diagnosis, only the first admission date was used.
- **Deaths:** Date of death was used for aggregating deaths. If date of death was missing, report date was used.
- For the "7-Day Average of Daily New Cases per 100K, by Age Group (Years)" graph and table, the population data source for calculating rate estimates was from Nevada State Demographer "2019 ASRHO Estimates and Projections Summary 2000 to 2038", 2020 projection, vintage 2019. Rates for individual age categories may be based on small numbers, which may give unstable estimates.
- All graphs in this report show data from approximately 60 days prior to the date of the report.
- All tables show data from the last 14 days before the current date, with the exception of the "Percent Change in Weekly Totals from Previous Week", which displays data from the previous eight completed weeks.
- For the "Percent of People Receiving COVID-19 Viral Tests Who Have Positive Results" graph, one person who has multiple specimens collected in one day is only reported once. If any test of that person is positive, that person counts as a positive result. If all tests of that individual are negative, that person counts as a negative result. Laboratory tests were included if they were a test assessing for the presence of SARS-CoV-2 viral RNA, for example PCR tests. Antibody tests were excluded.

COVID-19 Cases

Clark County, NV

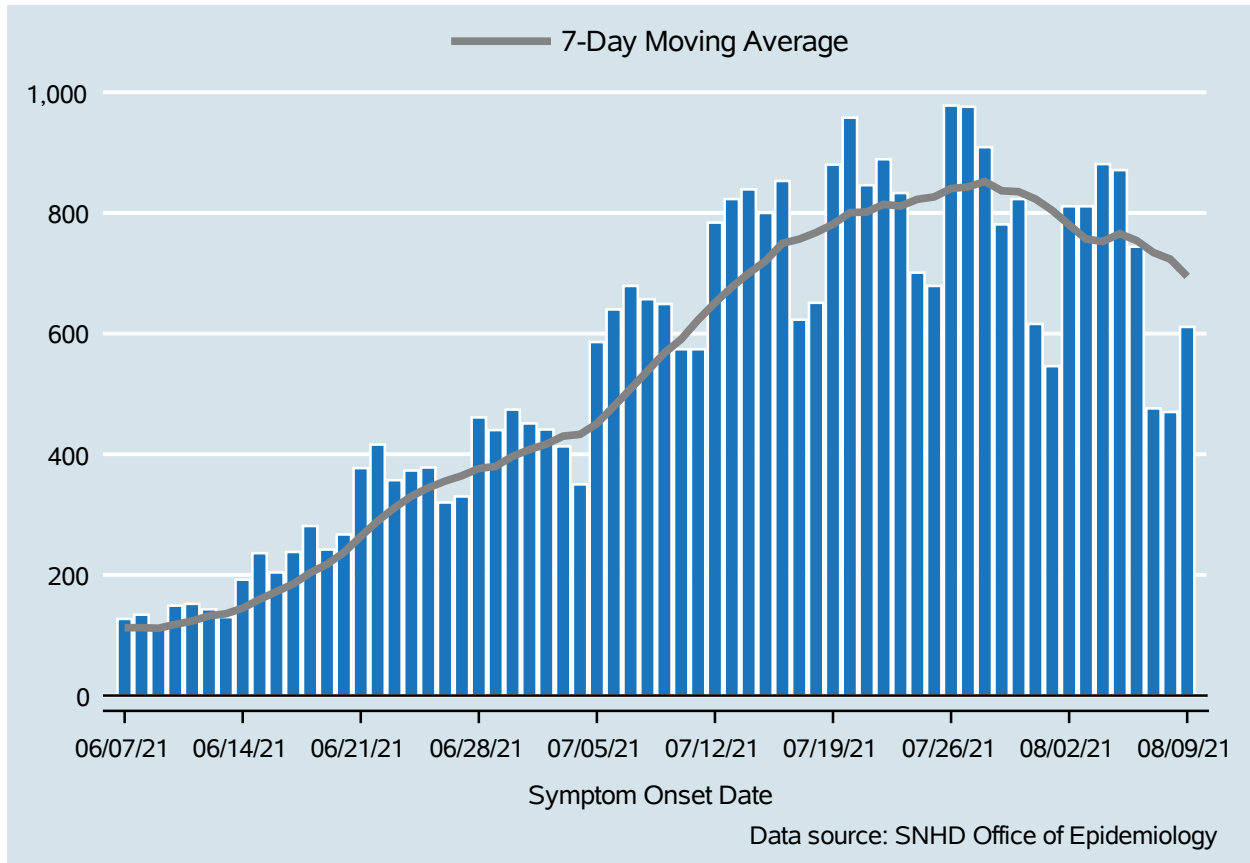


Table 1: COVID-19 Cases per Day, Clark County, NV

Date	Cases Per Day	7-Day Moving Average
Jul 27	976	843.1
Jul 28	909	852.1
Jul 29	781	836.7
Jul 30	823	835.3
Jul 31	616	823.1
Aug 01	546	804.1
Aug 02	811	780.3
Aug 03	811	756.7
Aug 04	881	752.7
Aug 05	871	765.6
Aug 06	744	754.3
Aug 07	476	734.3
Aug 08	470	723.4
Aug 09	611	694.9

COVID-19 Hospitalizations

Clark County, NV

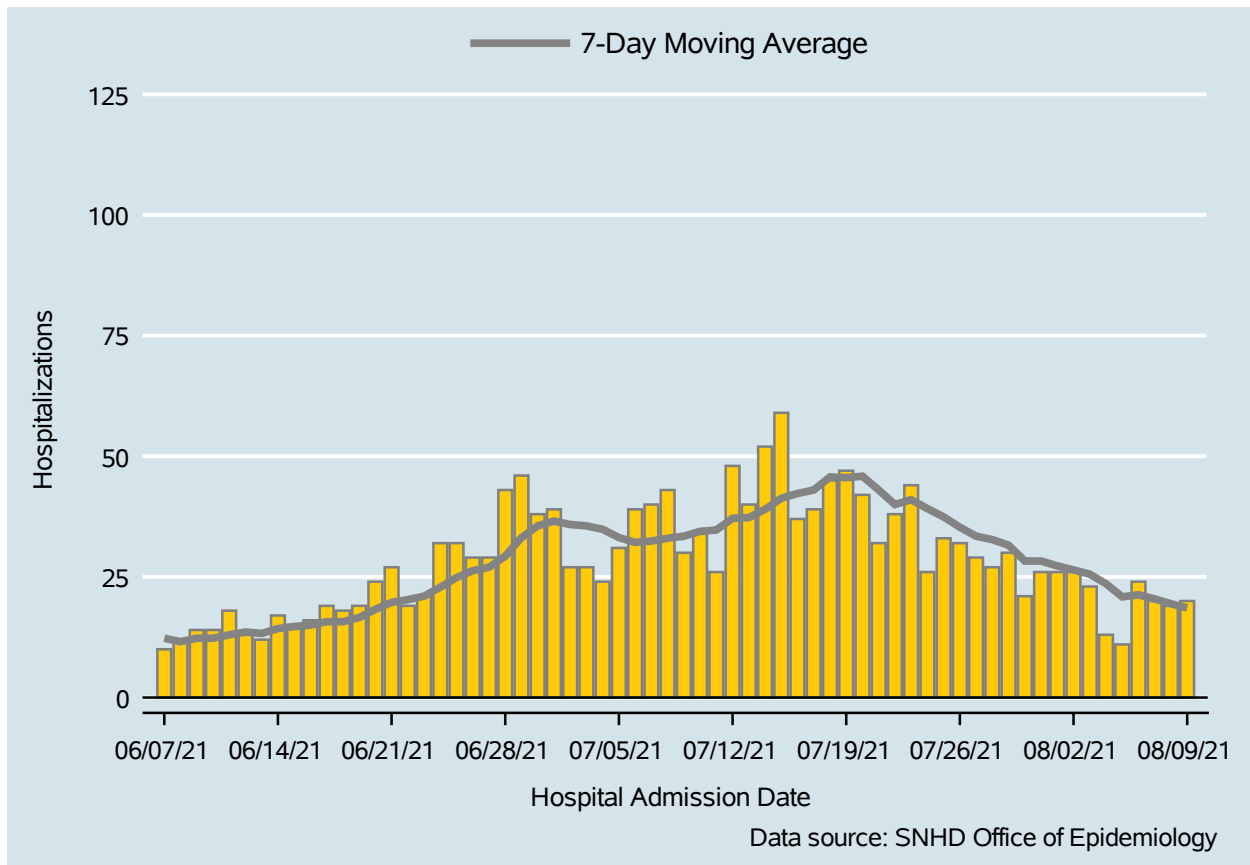


Table 2: COVID-19 Hospitalizations per Day, Clark County, NV

Date	Hospitalizations Per Day	7-Day Moving Average
Jul 27	29	33.4
Jul 28	27	32.7
Jul 29	30	31.6
Jul 30	21	28.3
Jul 31	26	28.3
Aug 01	26	27.3
Aug 02	26	26.4
Aug 03	23	25.6
Aug 04	13	23.6
Aug 05	11	20.9
Aug 06	24	21.3
Aug 07	20	20.4
Aug 08	19	19.4
Aug 09	20	18.6

COVID-19 Deaths

Clark County, NV

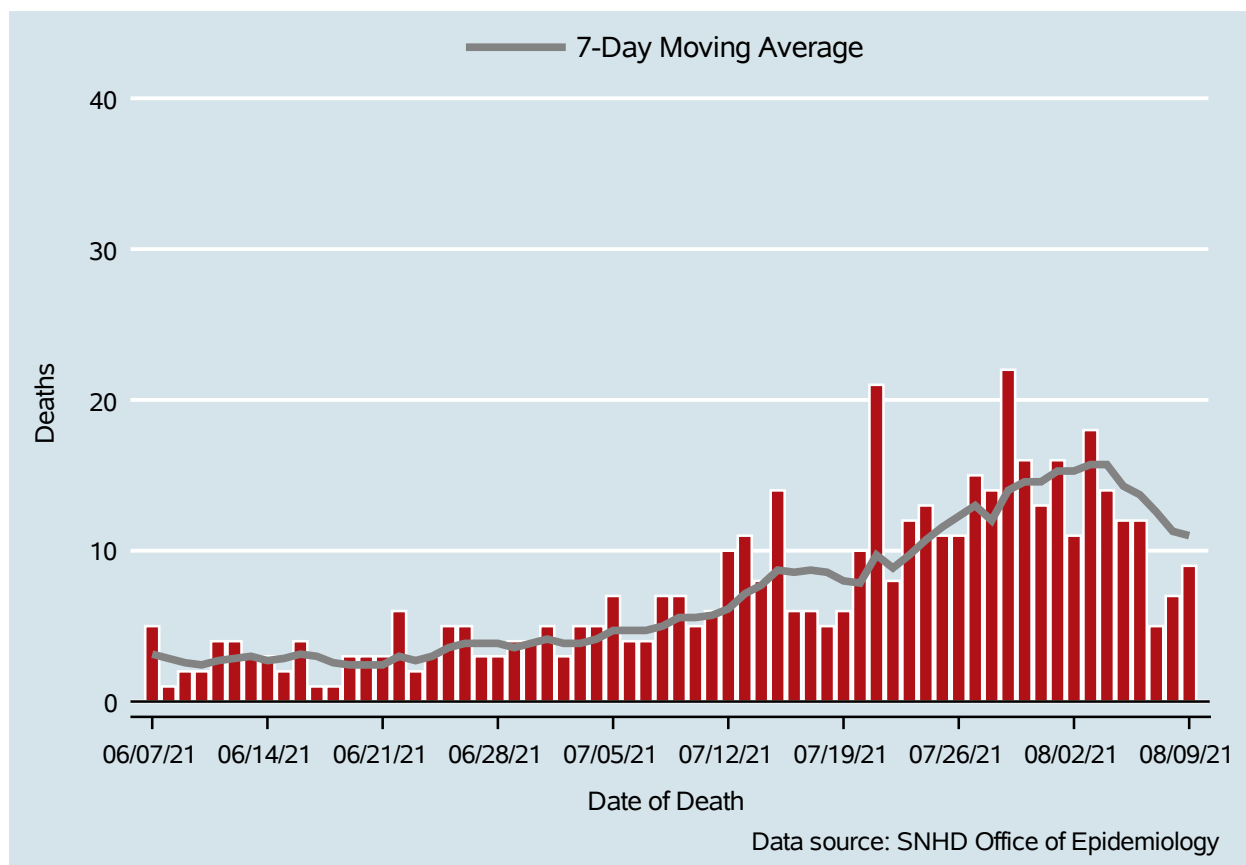


Table 3: COVID-19 Deaths per Day, Clark County, NV

Date	Deaths Per Day	7-Day Moving Average
Jul 27	15	13.0
Jul 28	14	12.0
Jul 29	22	14.0
Jul 30	16	14.6
Jul 31	13	14.6
Aug 01	16	15.3
Aug 02	11	15.3
Aug 03	18	15.7
Aug 04	14	15.7
Aug 05	12	14.3
Aug 06	12	13.7
Aug 07	5	12.6
Aug 08	7	11.3
Aug 09	9	11.0

7-Day Average of Daily New Cases per 100K, by Age Group (Years)

Clark County, NV

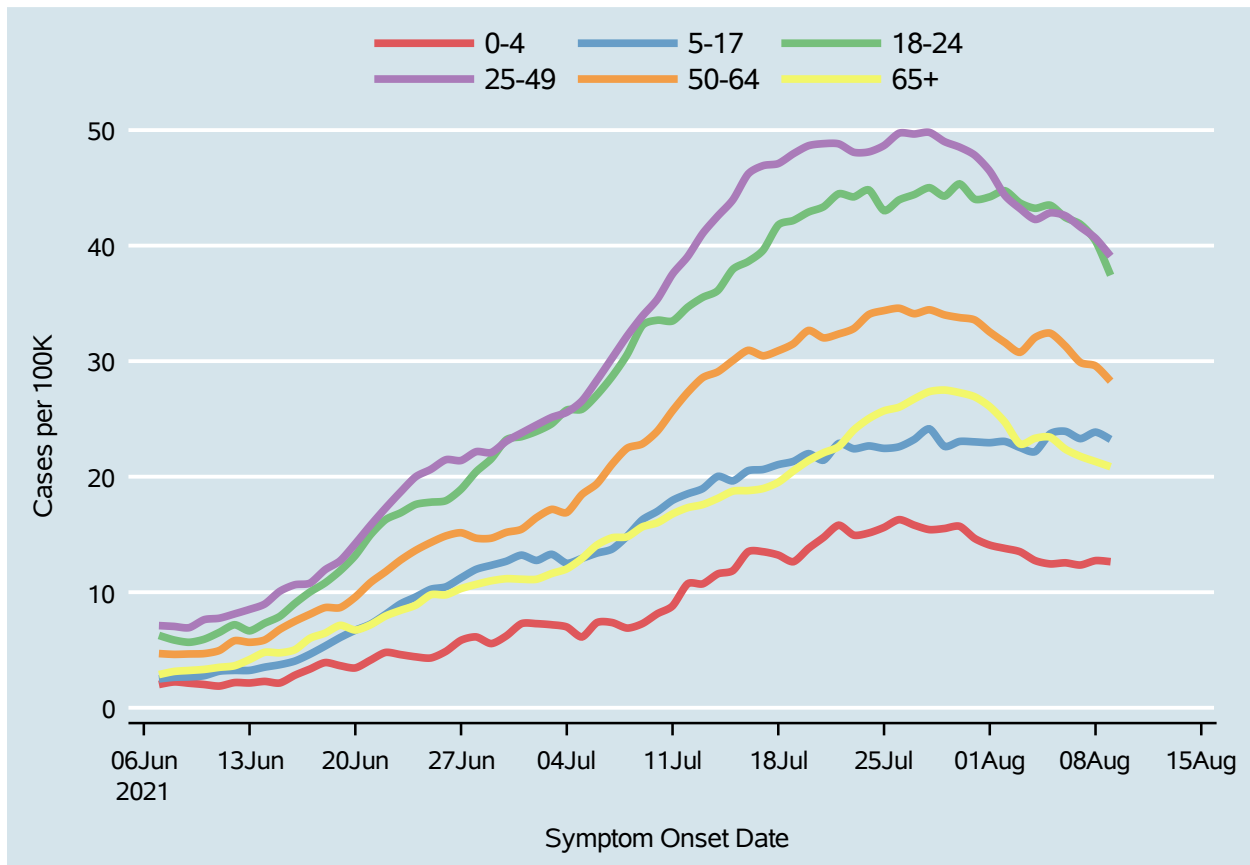
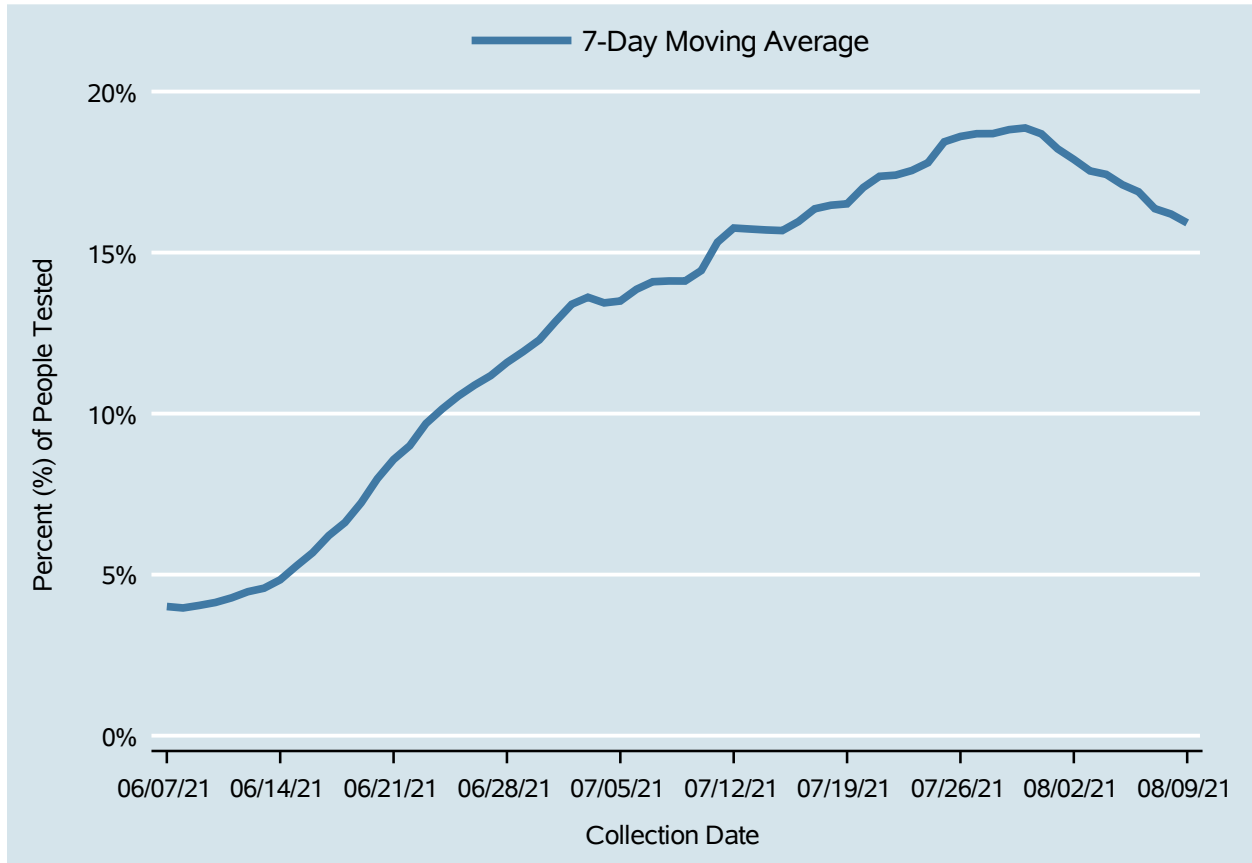


Table 4: 7-Day Average of Daily New Cases per 100K, by Age Group (Years)

Date	0-4	5-17	18-24	25-49	50-64	65+
Jul 27	15.8	23.2	44.4	49.7	34.1	26.7
Jul 28	15.4	24.1	45.0	49.8	34.4	27.4
Jul 29	15.5	22.6	44.3	49.0	34.0	27.5
Jul 30	15.7	23.0	45.3	48.5	33.8	27.3
Jul 31	14.7	23.0	44.0	47.8	33.6	26.9
Aug 01	14.1	22.9	44.2	46.4	32.5	26.1
Aug 02	13.8	23.0	44.7	44.3	31.6	24.7
Aug 03	13.5	22.5	43.7	43.2	30.8	22.8
Aug 04	12.7	22.2	43.2	42.3	32.0	23.3
Aug 05	12.5	23.7	43.5	42.8	32.4	23.4
Aug 06	12.5	23.9	42.4	42.6	31.3	22.4
Aug 07	12.4	23.3	41.8	41.6	29.9	21.8
Aug 08	12.7	23.9	40.4	40.6	29.6	21.3
Aug 09	12.6	23.2	37.4	39.1	28.3	20.9

Percent of People Receiving COVID-19 Viral Tests Who Have Positive Results

Clark County, NV



Report prepared by: Kellie Watkins, PhD, MS, Ying Zhang, PhD, MPH (Office of Epidemiology) and Lei Zhang, MS (Office of Informatics)