

# COVID-19 Trends

Clark County, Nevada

Document creation date: August 6, 2021

- General notes: This report uses surveillance data collected by the Southern Nevada Health District. Due to delays related to laboratory processing, reporting, and case investigations, data from the most recent days are less complete than data from older time points. For this reason, as of June 10, 2020 this report will not display data from the previous three days prior to the date that the report was created. As many case investigations are ongoing, all data presented in this report are considered preliminary and subject to change. Data regarding cases, hospitalizations, deaths, and labs were last updated August 6, 2021 at 12:00 AM, and data is reported up through August 2, 2021.
- Cases: Symptom onset date was used for aggregating cases. If symptom onset date was missing, the following dates were substituted in this order: diagnosis date, lab collection date, report date (date case was reported to SNHD), event creation date (date case was entered into TriSano, SNHD's surveillance system).
- Hospitalizations: Admission date was used for aggregating hospitalizations. If admission date was missing, report date was substituted. If a person had more than one hospitalization after his/her COVID-19 diagnosis, only the first admission date was used.
- Deaths: Date of death was used for aggregating deaths. If date of death was missing, report date was used.
- For the "7-Day Average of Daily New Cases per 100K, by Age Group (Years)" graph and table, the population data source for calculating rate estimates was from Nevada State Demographer "2019 ASRHO Estimates and Projections Summary 2000 to 2038", 2020 projection, vintage 2019. Rates for individual age categories may be based on small numbers, which may give unstable estimates.
- All graphs in this report show data from approximately 60 days prior to the date of the report.
- All tables show data from the last 14 days before the current date, with the exception of the "Percent Change in Weekly Totals from Previous Week", which displays data from the previous eight completed weeks.
- For the "Percent of People Receiving COVID-19 Viral Tests Who Have Positive Results" graph, one person who has multiple specimens collected in one day is only reported once. If any test of that person is positive, that person counts as a positive result. If all tests of that individual are negative, that person counts as a negative result. Laboratory tests were included if they were a test assessing for the presence of SARS-CoV-2 viral RNA, for example PCR tests. Antibody tests were excluded.

# COVID-19 Cases

Clark County, NV

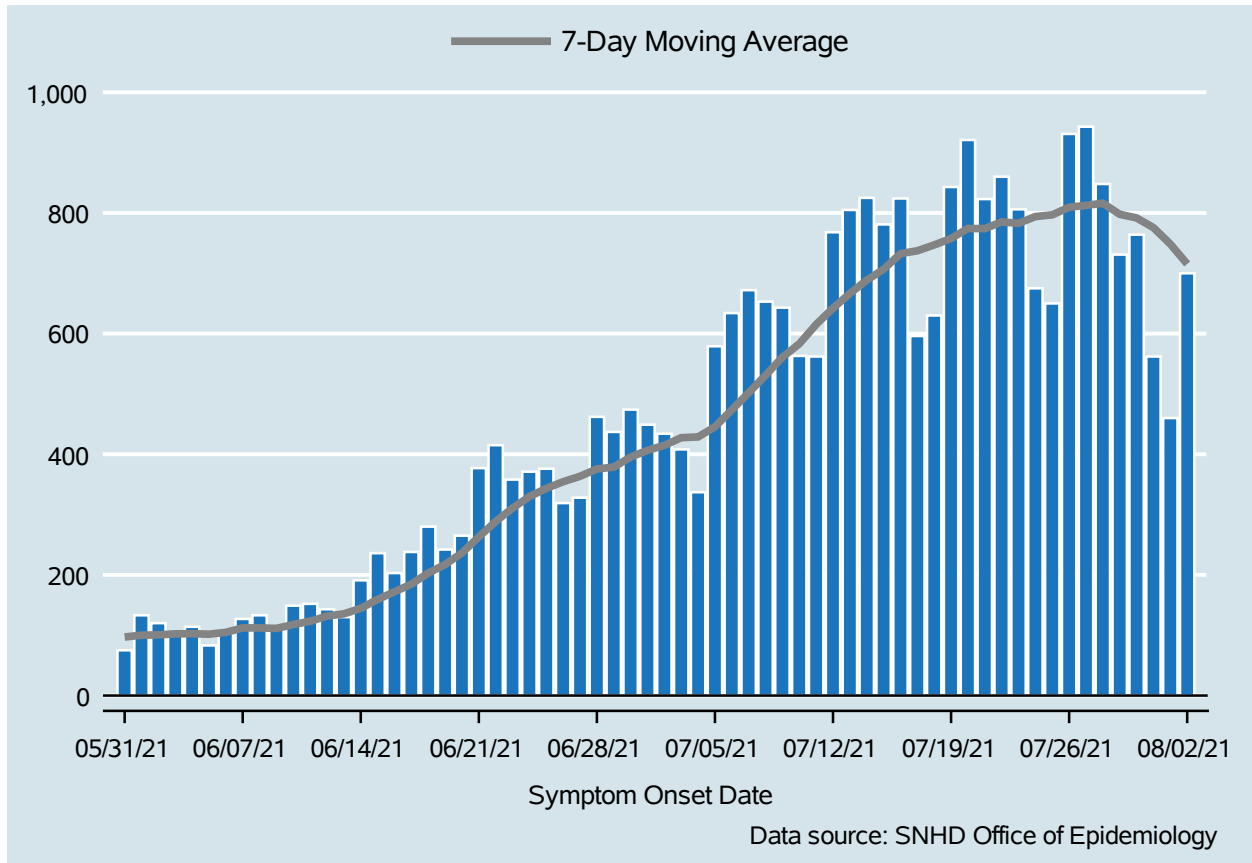


Table 1: COVID-19 Cases per Day, Clark County, NV

Date	Cases Per Day	7-Day Moving Average
Jul 20	921	774.3
Jul 21	823	774.0
Jul 22	860	785.3
Jul 23	806	782.7
Jul 24	675	794.0
Jul 25	650	796.9
Jul 26	931	809.4
Jul 27	943	812.6
Jul 28	848	816.1
Jul 29	731	797.7
Jul 30	764	791.7
Jul 31	562	775.6
Aug 01	460	748.4
Aug 02	700	715.4

# COVID-19 Hospitalizations

Clark County, NV

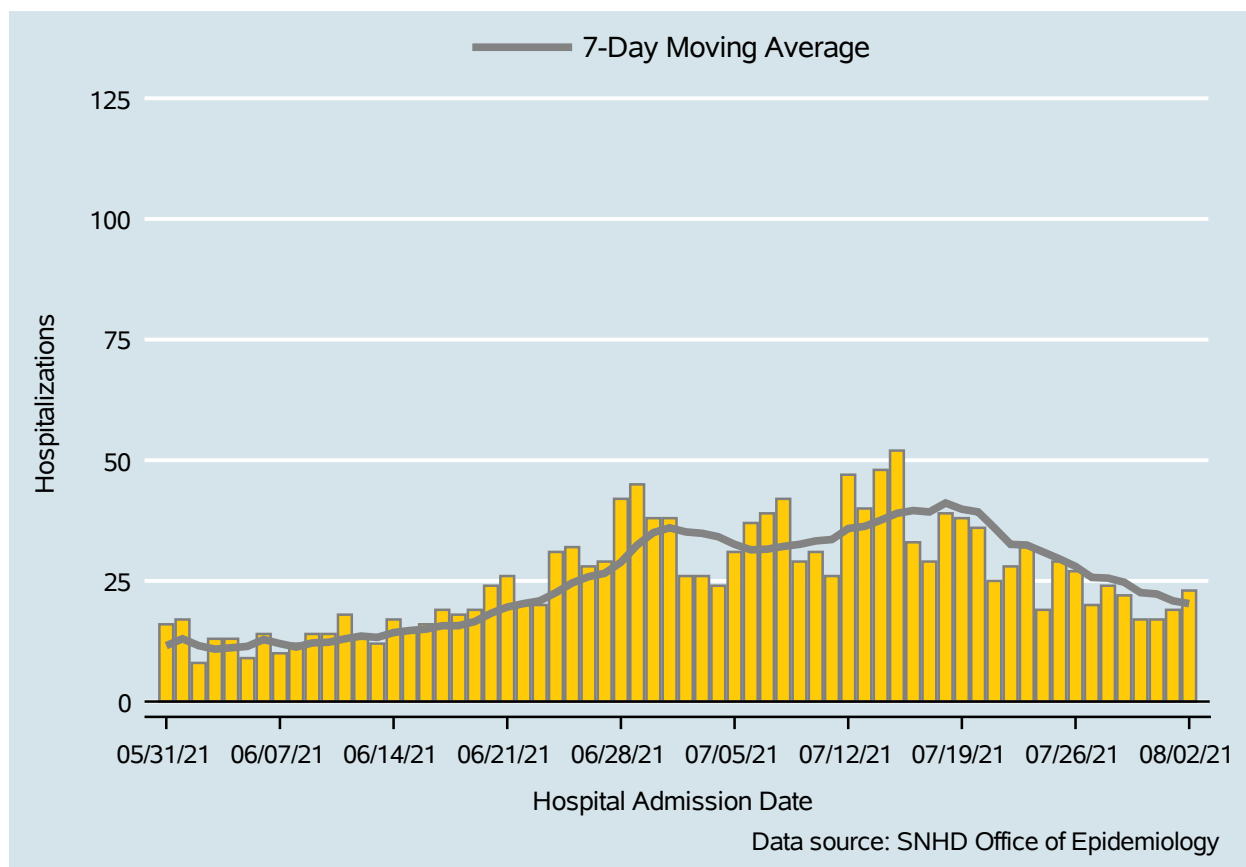


Table 2: COVID-19 Hospitalizations per Day, Clark County, NV

Date	Hospitalizations Per Day	7-Day Moving Average
Jul 20	36	39.3
Jul 21	25	36.0
Jul 22	28	32.6
Jul 23	32	32.4
Jul 24	19	31.0
Jul 25	29	29.6
Jul 26	27	28.0
Jul 27	20	25.7
Jul 28	24	25.6
Jul 29	22	24.7
Jul 30	17	22.6
Jul 31	17	22.3
Aug 01	19	20.9
Aug 02	23	20.3

# COVID-19 Deaths

Clark County, NV

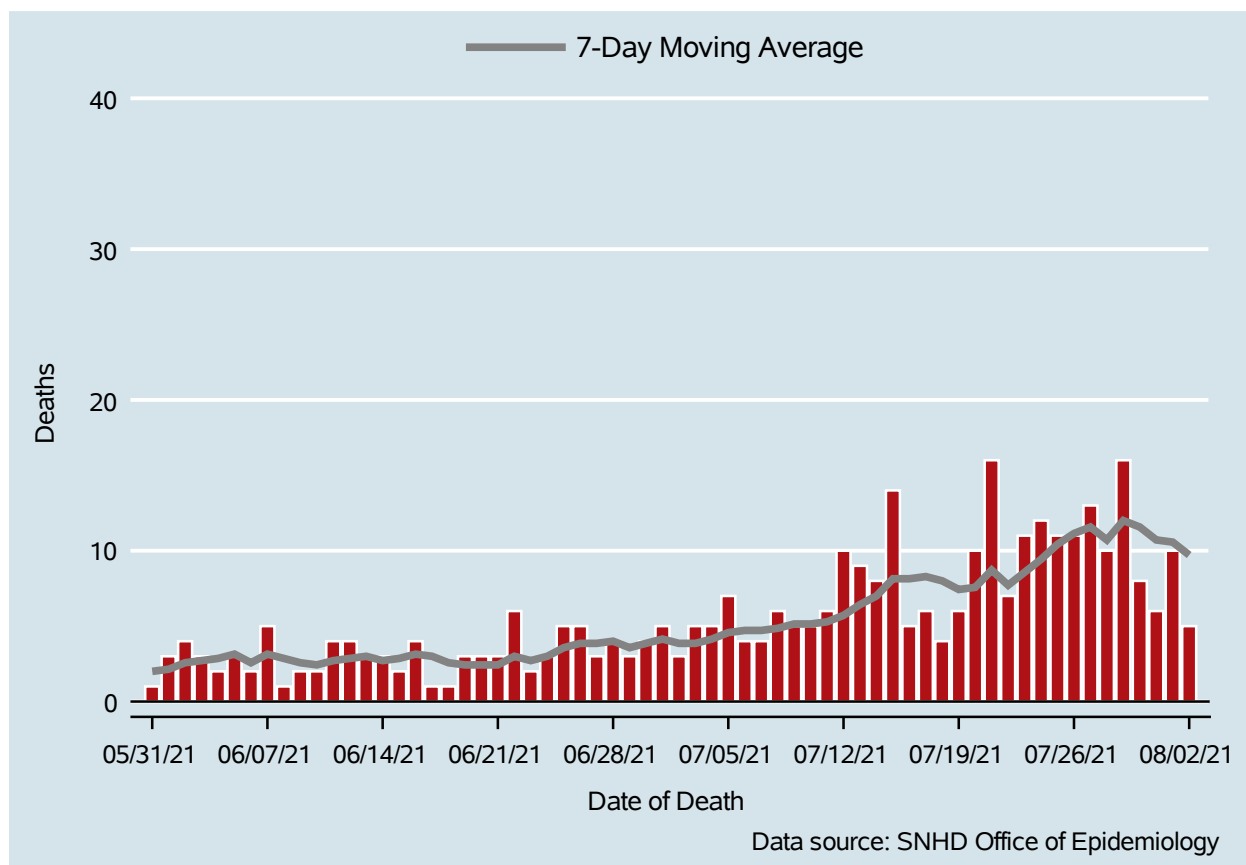


Table 3: COVID-19 Deaths per Day, Clark County, NV

Date	Deaths Per Day	7-Day Moving Average
Jul 20	10	7.6
Jul 21	16	8.7
Jul 22	7	7.7
Jul 23	11	8.6
Jul 24	12	9.4
Jul 25	11	10.4
Jul 26	11	11.1
Jul 27	13	11.6
Jul 28	10	10.7
Jul 29	16	12.0
Jul 30	8	11.6
Jul 31	6	10.7
Aug 01	10	10.6
Aug 02	5	9.7

## 7-Day Average of Daily New Cases per 100K, by Age Group (Years)

Clark County, NV

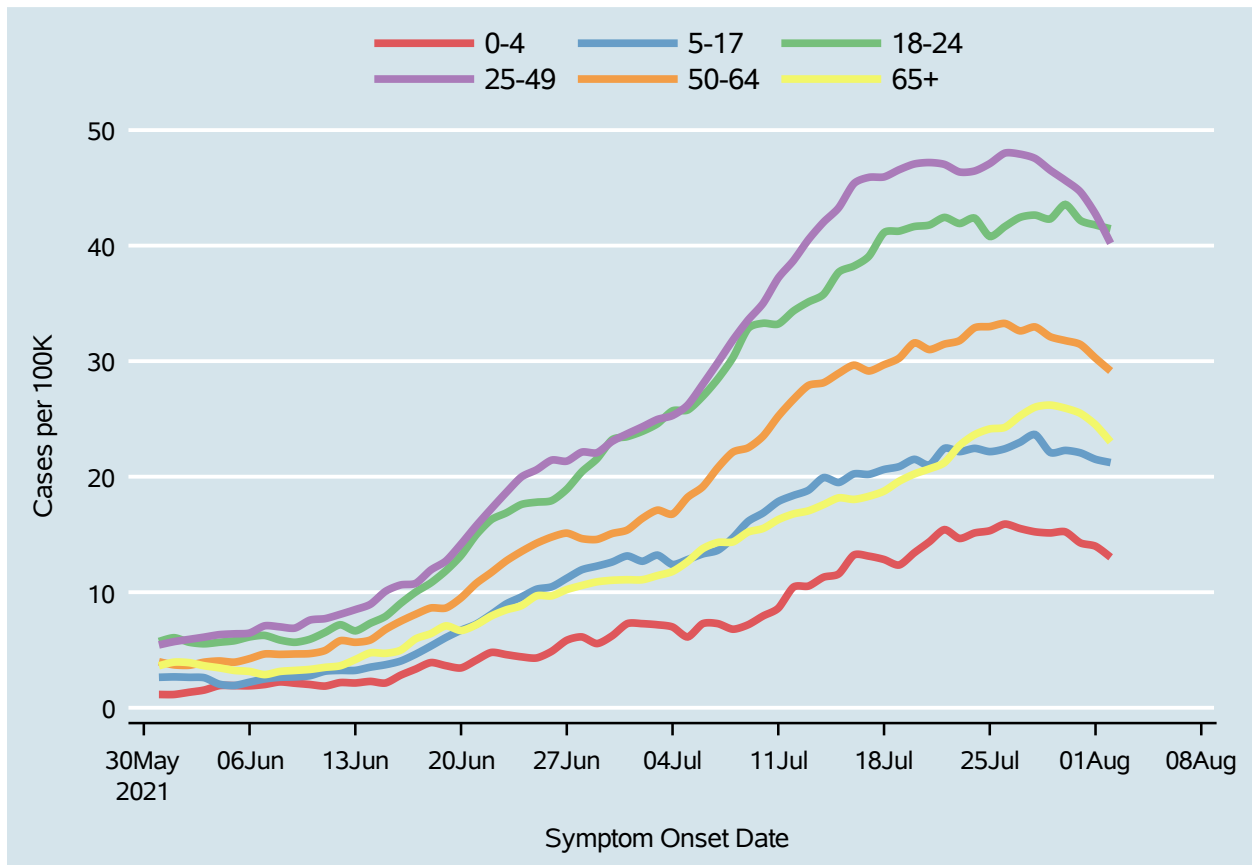
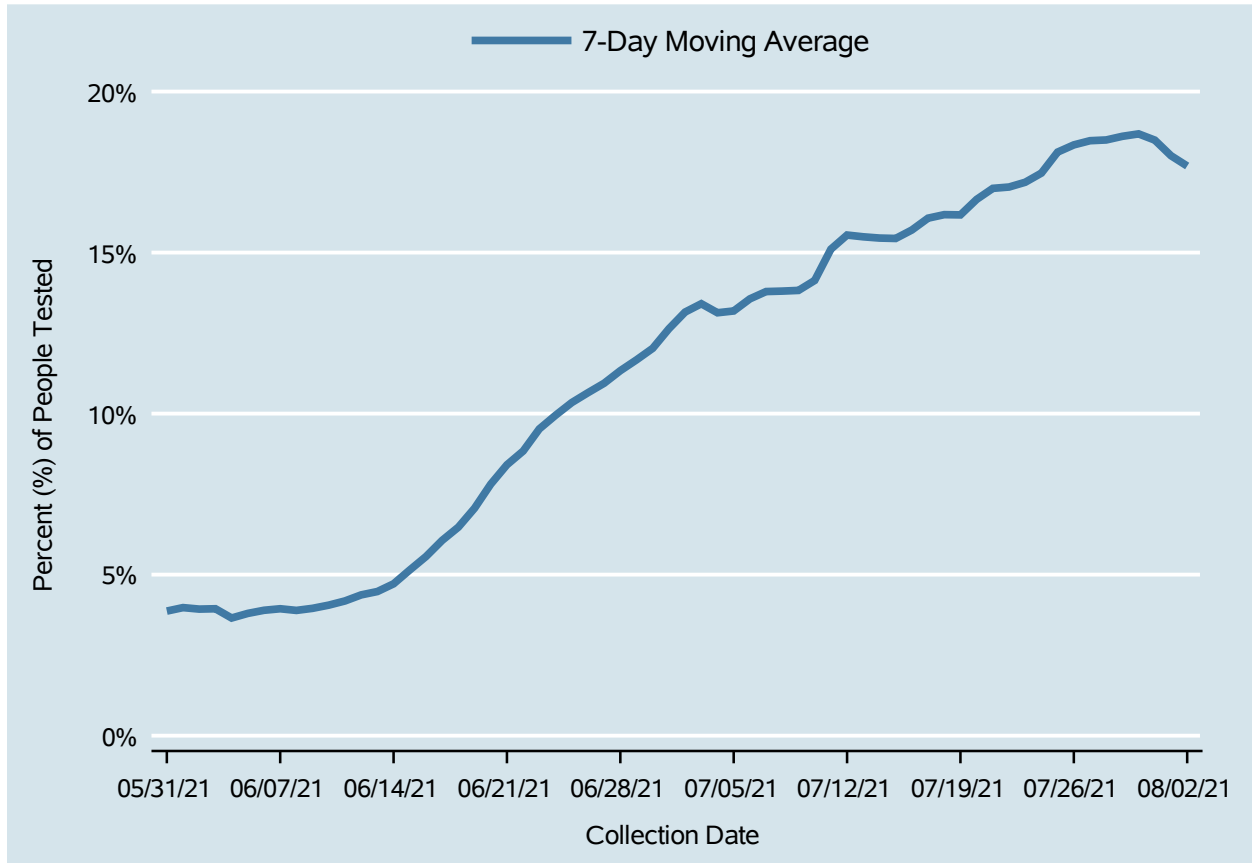


Table 4: 7-Day Average of Daily New Cases per 100K, by Age Group (Years)

Date	0-4	5-17	18-24	25-49	50-64	65+
Jul 20	13.4	21.5	41.7	47.1	31.6	20.2
Jul 21	14.4	21.0	41.8	47.2	31.0	20.7
Jul 22	15.4	22.5	42.4	47.0	31.5	21.2
Jul 23	14.7	22.2	41.9	46.4	31.8	22.7
Jul 24	15.1	22.5	42.4	46.5	32.9	23.6
Jul 25	15.3	22.2	40.8	47.1	33.0	24.1
Jul 26	15.9	22.4	41.7	48.0	33.3	24.3
Jul 27	15.5	23.0	42.4	47.9	32.6	25.3
Jul 28	15.2	23.6	42.6	47.5	33.0	26.0
Jul 29	15.1	22.1	42.3	46.5	32.1	26.2
Jul 30	15.2	22.3	43.6	45.6	31.8	25.9
Jul 31	14.3	22.1	42.2	44.6	31.4	25.5
Aug 01	14.0	21.5	41.8	42.7	30.3	24.5
Aug 02	13.0	21.2	41.5	40.2	29.1	23.0

# Percent of People Receiving COVID-19 Viral Tests Who Have Positive Results

Clark County, NV



*Report prepared by: Kellie Watkins, PhD, MS, Ying Zhang, PhD, MPH (Office of Epidemiology) and Lei Zhang, MS (Office of Informatics)*