

COVID-19 Trends

Clark County, Nevada

Document creation date: August 5, 2021

- General notes: This report uses surveillance data collected by the Southern Nevada Health District. Due to delays related to laboratory processing, reporting, and case investigations, data from the most recent days are less complete than data from older time points. For this reason, as of June 10, 2020 this report will not display data from the previous three days prior to the date that the report was created. As many case investigations are ongoing, all data presented in this report are considered preliminary and subject to change. Data regarding cases, hospitalizations, deaths, and labs were last updated August 5, 2021 at 12:00 AM, and data is reported up through August 1, 2021.
- Cases: Symptom onset date was used for aggregating cases. If symptom onset date was missing, the following dates were substituted in this order: diagnosis date, lab collection date, report date (date case was reported to SNHD), event creation date (date case was entered into TriSano, SNHD's surveillance system).
- Hospitalizations: Admission date was used for aggregating hospitalizations. If admission date was missing, report date was substituted. If a person had more than one hospitalization after his/her COVID-19 diagnosis, only the first admission date was used.
- Deaths: Date of death was used for aggregating deaths. If date of death was missing, report date was used.
- For the "7-Day Average of Daily New Cases per 100K, by Age Group (Years)" graph and table, the population data source for calculating rate estimates was from Nevada State Demographer "2019 ASRHO Estimates and Projections Summary 2000 to 2038", 2020 projection, vintage 2019. Rates for individual age categories may be based on small numbers, which may give unstable estimates.
- All graphs in this report show data from approximately 60 days prior to the date of the report.
- All tables show data from the last 14 days before the current date, with the exception of the "Percent Change in Weekly Totals from Previous Week", which displays data from the previous eight completed weeks.
- For the "Percent of People Receiving COVID-19 Viral Tests Who Have Positive Results" graph, one person who has multiple specimens collected in one day is only reported once. If any test of that person is positive, that person counts as a positive result. If all tests of that individual are negative, that person counts as a negative result. Laboratory tests were included if they were a test assessing for the presence of SARS-CoV-2 viral RNA, for example PCR tests. Antibody tests were excluded.

COVID-19 Cases

Clark County, NV

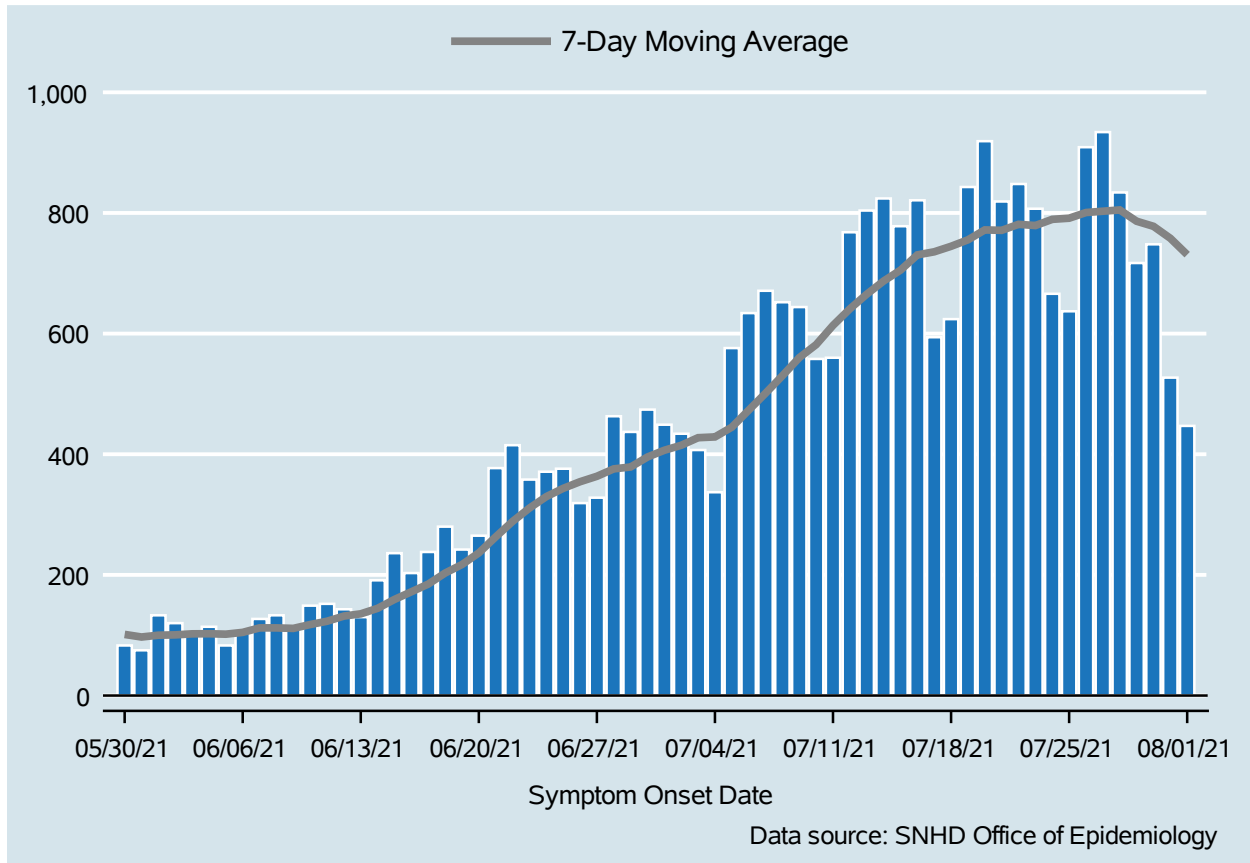


Table 1: COVID-19 Cases per Day, Clark County, NV

Date	Cases Per Day	7-Day Moving Average
Jul 19	843	755.4
Jul 20	919	771.9
Jul 21	819	771.1
Jul 22	848	781.1
Jul 23	807	779.1
Jul 24	666	789.4
Jul 25	637	791.3
Jul 26	909	800.7
Jul 27	934	802.9
Jul 28	834	805.0
Jul 29	717	786.3
Jul 30	748	777.9
Jul 31	527	758.0
Aug 01	447	730.9

COVID-19 Hospitalizations

Clark County, NV

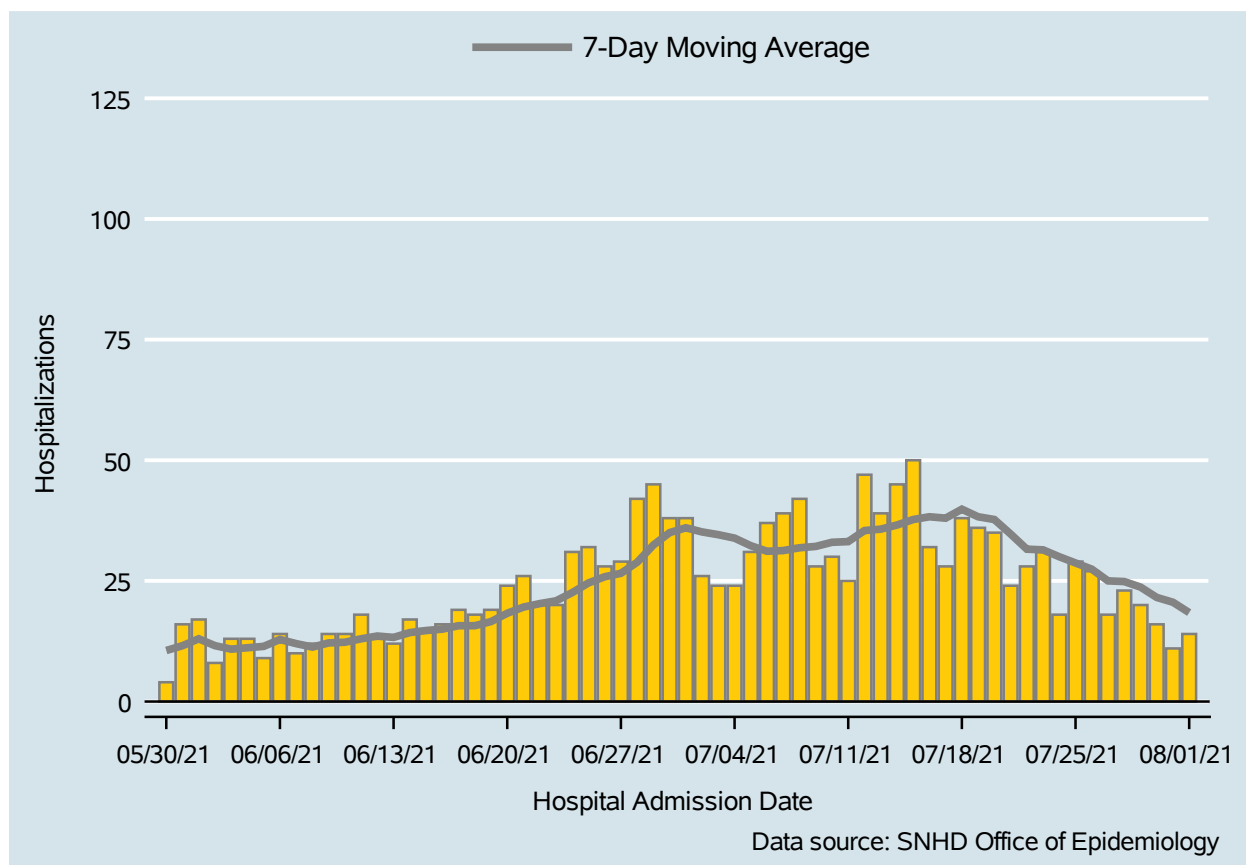


Table 2: COVID-19 Hospitalizations per Day, Clark County, NV

Date	Hospitalizations Per Day	7-Day Moving Average
Jul 19	36	38.3
Jul 20	35	37.7
Jul 21	24	34.7
Jul 22	28	31.6
Jul 23	31	31.4
Jul 24	18	30.0
Jul 25	29	28.7
Jul 26	27	27.4
Jul 27	18	25.0
Jul 28	23	24.9
Jul 29	20	23.7
Jul 30	16	21.6
Jul 31	11	20.6
Aug 01	14	18.4

COVID-19 Deaths

Clark County, NV

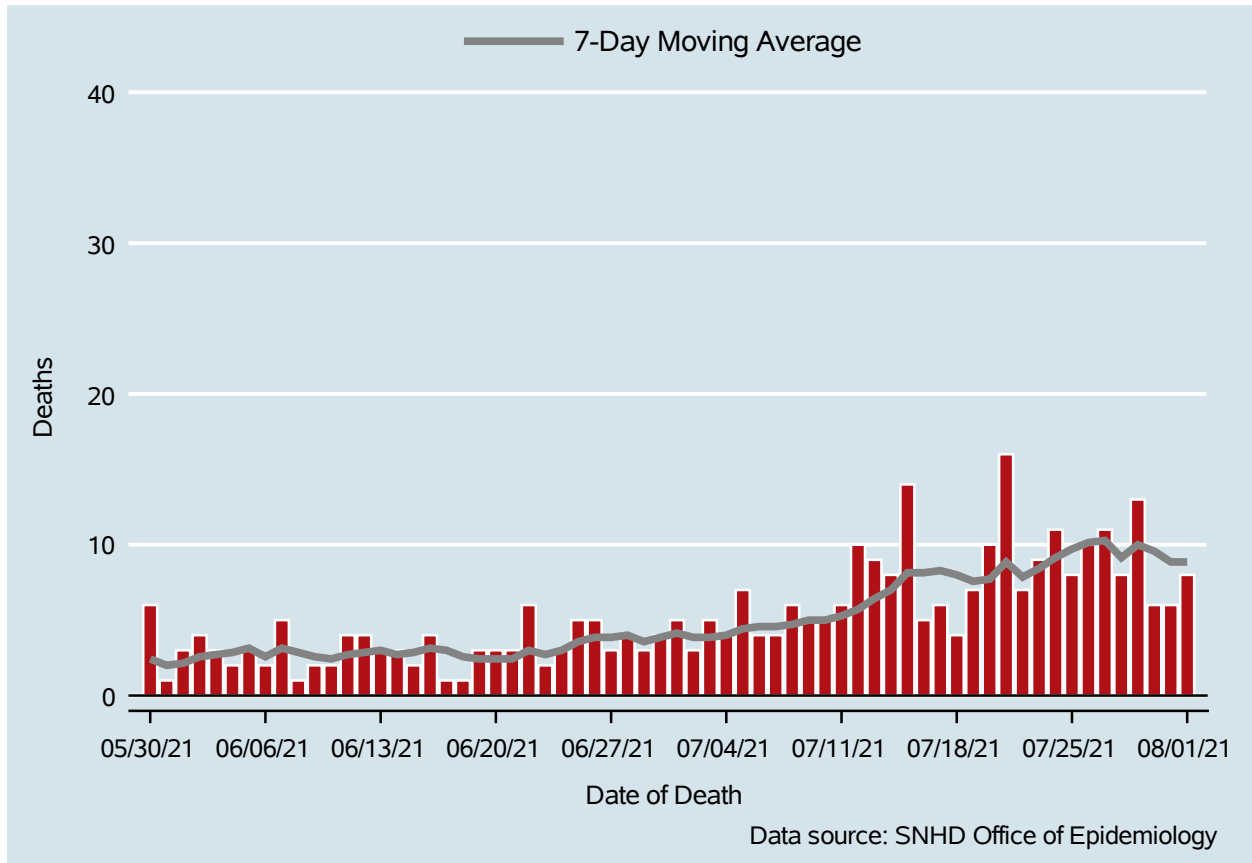


Table 3: COVID-19 Deaths per Day, Clark County, NV

Date	Deaths Per Day	7-Day Moving Average
Jul 19	7	7.6
Jul 20	10	7.7
Jul 21	16	8.9
Jul 22	7	7.9
Jul 23	9	8.4
Jul 24	11	9.1
Jul 25	8	9.7
Jul 26	10	10.1
Jul 27	11	10.3
Jul 28	8	9.1
Jul 29	13	10.0
Jul 30	6	9.6
Jul 31	6	8.9
Aug 01	8	8.9

7-Day Average of Daily New Cases per 100K, by Age Group (Years)

Clark County, NV

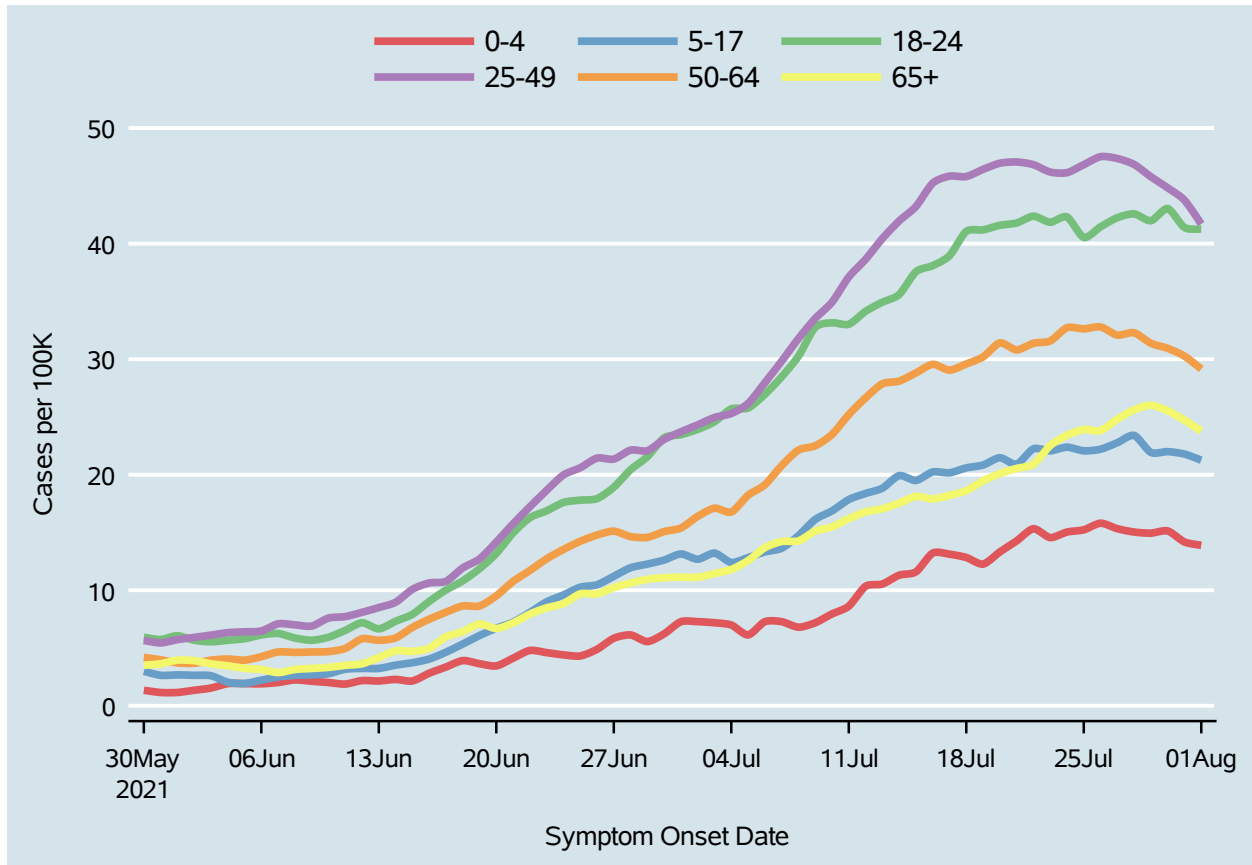
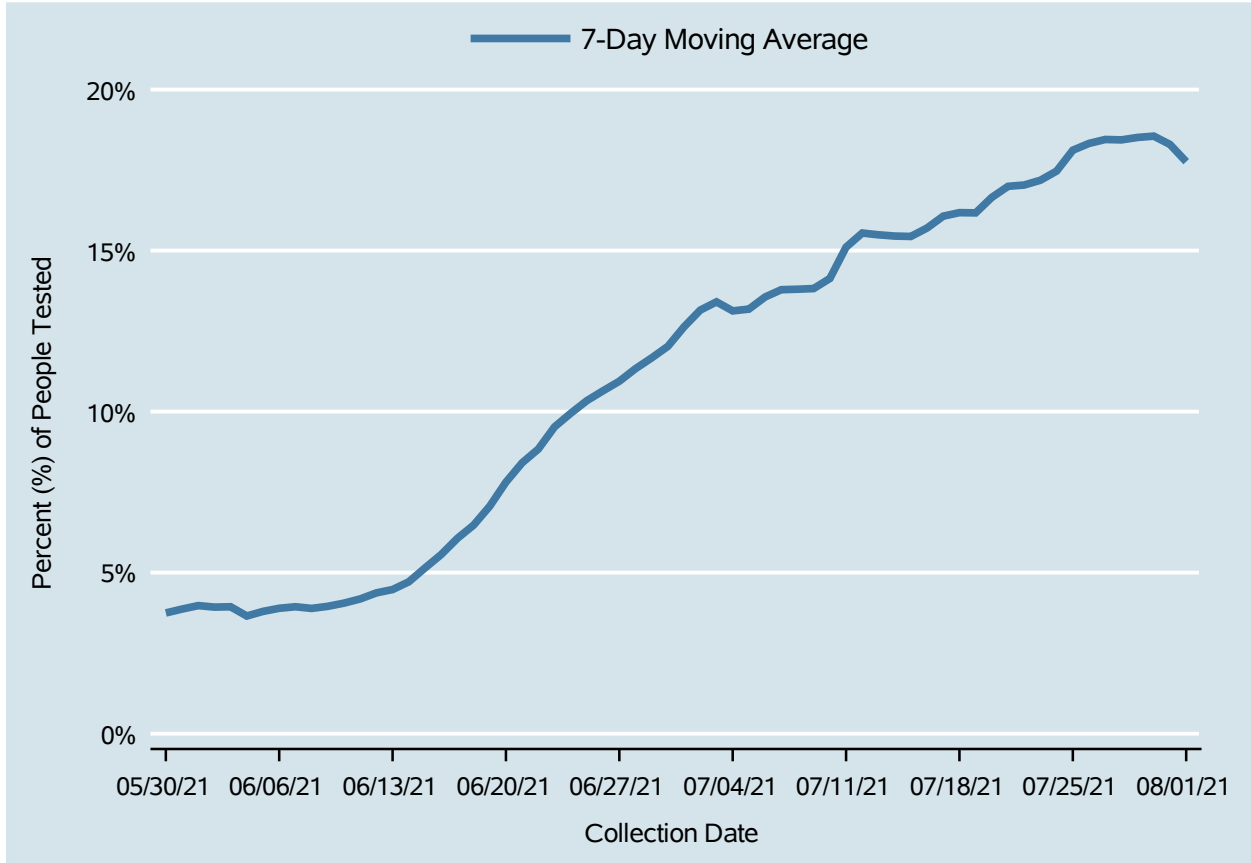


Table 4: 7-Day Average of Daily New Cases per 100K, by Age Group (Years)

Date	0-4	5-17	18-24	25-49	50-64	65+
Jul 19	12.3	20.8	41.2	46.4	30.2	19.5
Jul 20	13.3	21.5	41.6	47.0	31.4	20.1
Jul 21	14.3	20.9	41.8	47.1	30.8	20.5
Jul 22	15.3	22.2	42.4	46.8	31.4	20.9
Jul 23	14.6	22.1	41.8	46.2	31.6	22.5
Jul 24	15.0	22.4	42.3	46.1	32.7	23.4
Jul 25	15.2	22.1	40.5	46.8	32.6	23.9
Jul 26	15.8	22.2	41.5	47.5	32.8	23.8
Jul 27	15.3	22.8	42.2	47.4	32.1	24.8
Jul 28	15.0	23.4	42.6	46.9	32.3	25.6
Jul 29	14.9	21.9	42.0	45.8	31.4	26.0
Jul 30	15.1	22.0	43.0	44.8	30.9	25.5
Jul 31	14.2	21.8	41.4	43.8	30.3	24.7
Aug 01	13.9	21.3	41.3	41.7	29.1	23.8

Percent of People Receiving COVID-19 Viral Tests Who Have Positive Results

Clark County, NV



Report prepared by: Kellie Watkins, PhD, MS, Ying Zhang, PhD, MPH (Office of Epidemiology) and Lei Zhang, MS (Office of Informatics)