

COVID-19 Trends

Clark County, Nevada

Document creation date: August 4, 2021

- General notes: This report uses surveillance data collected by the Southern Nevada Health District. Due to delays related to laboratory processing, reporting, and case investigations, data from the most recent days are less complete than data from older time points. For this reason, as of June 10, 2020 this report will not display data from the previous three days prior to the date that the report was created. As many case investigations are ongoing, all data presented in this report are considered preliminary and subject to change. Data regarding cases, hospitalizations, deaths, and labs were last updated August 4, 2021 at 12:00 AM, and data is reported up through July 31, 2021.
- Cases: Symptom onset date was used for aggregating cases. If symptom onset date was missing, the following dates were substituted in this order: diagnosis date, lab collection date, report date (date case was reported to SNHD), event creation date (date case was entered into TriSano, SNHD's surveillance system).
- Hospitalizations: Admission date was used for aggregating hospitalizations. If admission date was missing, report date was substituted. If a person had more than one hospitalization after his/her COVID-19 diagnosis, only the first admission date was used.
- Deaths: Date of death was used for aggregating deaths. If date of death was missing, report date was used.
- For the "7-Day Average of Daily New Cases per 100K, by Age Group (Years)" graph and table, the population data source for calculating rate estimates was from Nevada State Demographer "2019 ASRHO Estimates and Projections Summary 2000 to 2038", 2020 projection, vintage 2019. Rates for individual age categories may be based on small numbers, which may give unstable estimates.
- All graphs in this report show data from approximately 60 days prior to the date of the report.
- All tables show data from the last 14 days before the current date, with the exception of the "Percent Change in Weekly Totals from Previous Week", which displays data from the previous eight completed weeks.
- For the "Percent of People Receiving COVID-19 Viral Tests Who Have Positive Results" graph, one person who has multiple specimens collected in one day is only reported once. If any test of that person is positive, that person counts as a positive result. If all tests of that individual are negative, that person counts as a negative result. Laboratory tests were included if they were a test assessing for the presence of SARS-CoV-2 viral RNA, for example PCR tests. Antibody tests were excluded.

COVID-19 Cases

Clark County, NV

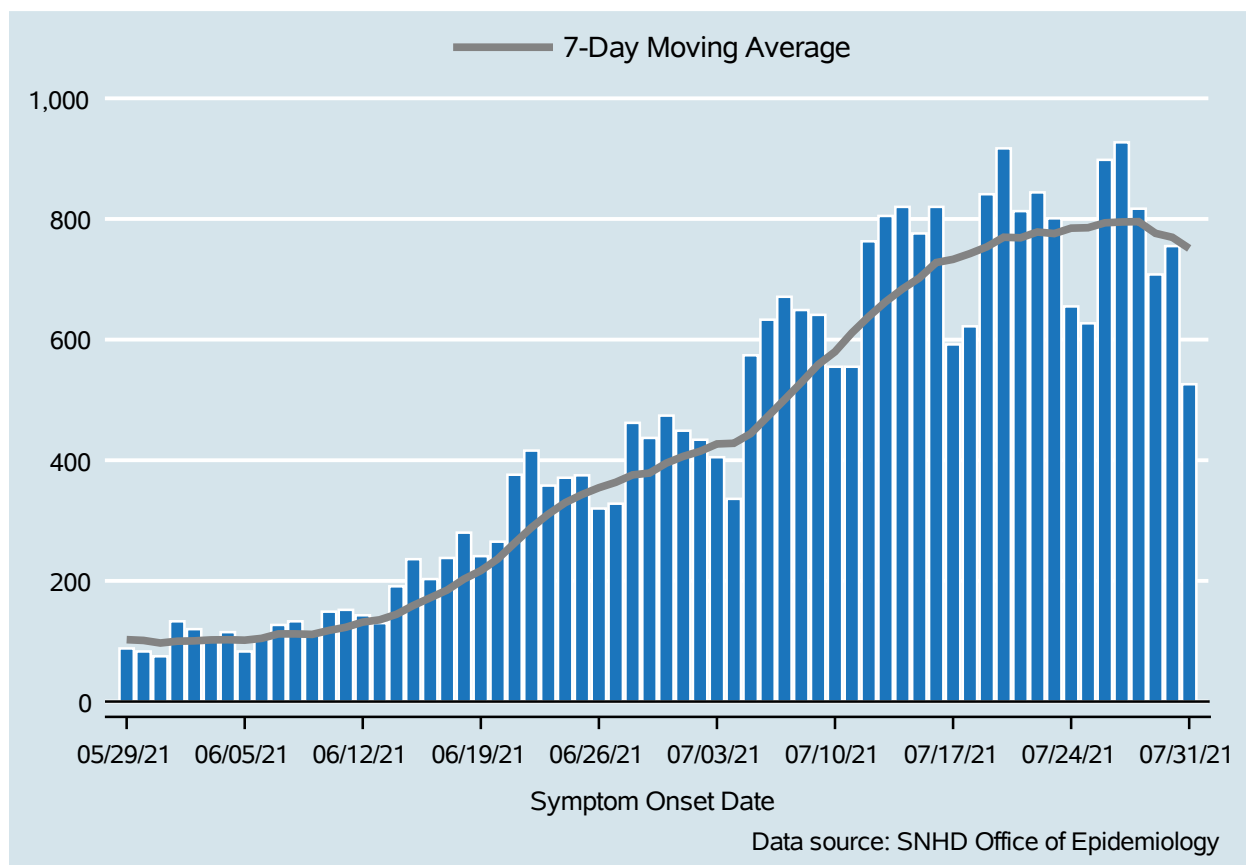


Table 1: COVID-19 Cases per Day, Clark County, NV

Date	Cases Per Day	7-Day Moving Average
Jul 18	622	742.6
Jul 19	841	753.7
Jul 20	917	769.7
Jul 21	813	768.7
Jul 22	844	778.4
Jul 23	801	775.7
Jul 24	655	784.7
Jul 25	627	785.4
Jul 26	898	793.6
Jul 27	927	795.0
Jul 28	817	795.6
Jul 29	708	776.1
Jul 30	755	769.6
Jul 31	526	751.1

COVID-19 Hospitalizations

Clark County, NV

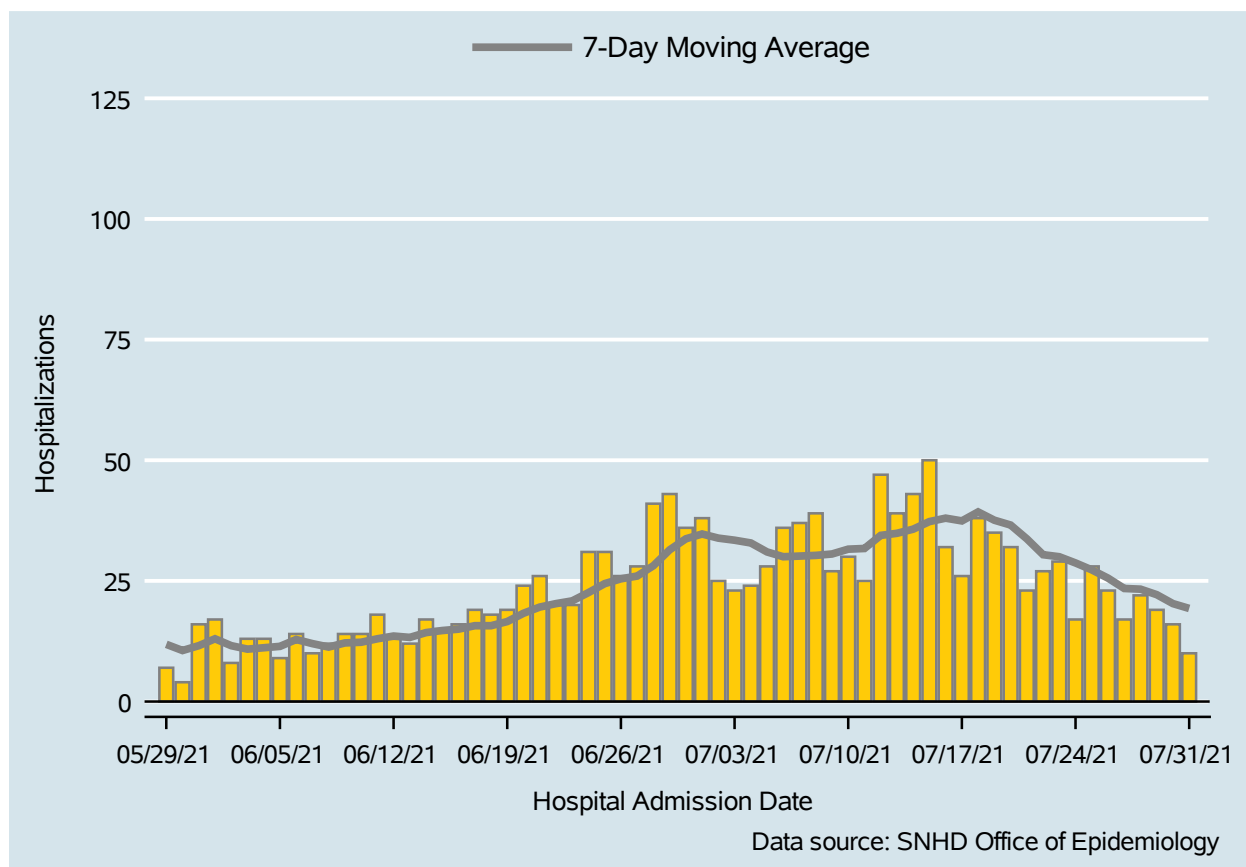


Table 2: COVID-19 Hospitalizations per Day, Clark County, NV

Date	Hospitalizations Per Day	7-Day Moving Average
Jul 18	38	39.3
Jul 19	35	37.6
Jul 20	32	36.6
Jul 21	23	33.7
Jul 22	27	30.4
Jul 23	29	30.0
Jul 24	17	28.7
Jul 25	28	27.3
Jul 26	23	25.6
Jul 27	17	23.4
Jul 28	22	23.3
Jul 29	19	22.1
Jul 30	16	20.3
Jul 31	10	19.3

COVID-19 Deaths

Clark County, NV

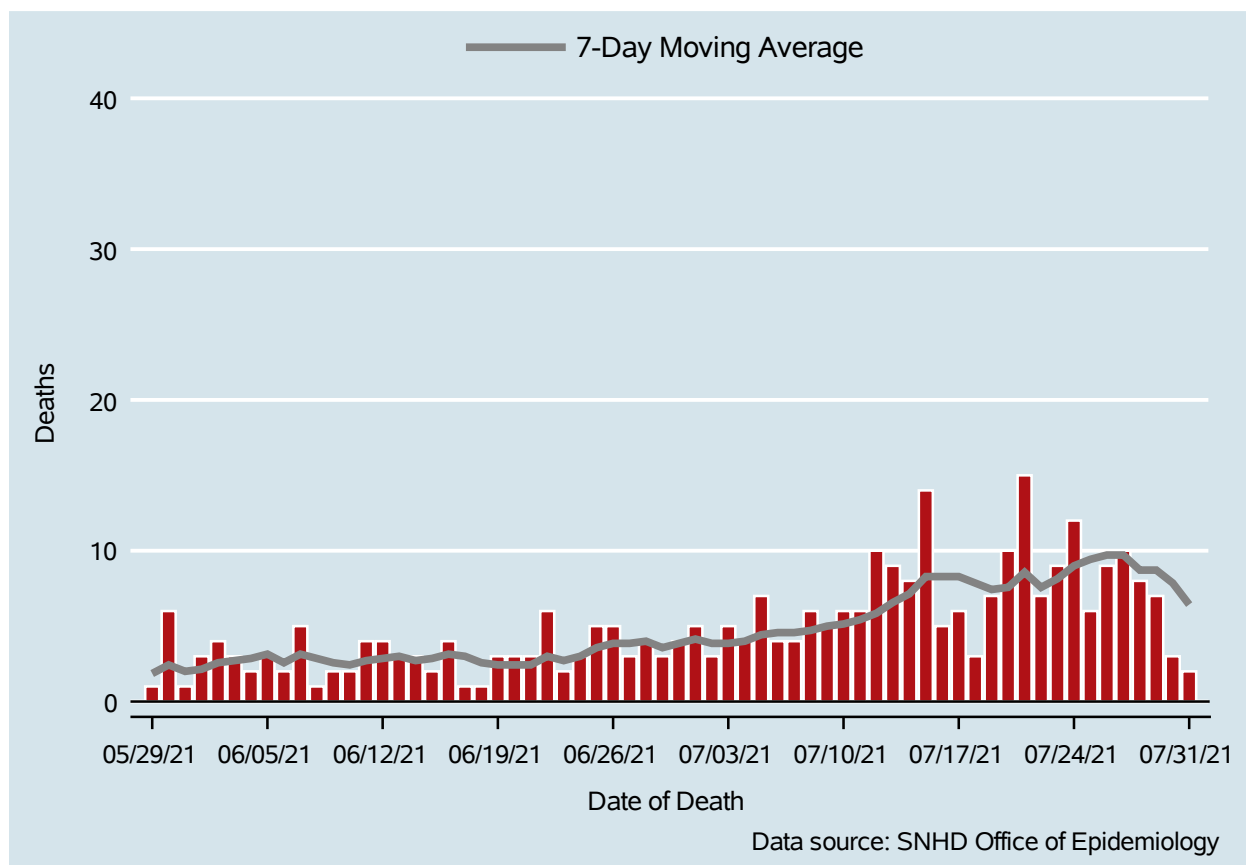


Table 3: COVID-19 Deaths per Day, Clark County, NV

Date	Deaths Per Day	7-Day Moving Average
Jul 18	3	7.9
Jul 19	7	7.4
Jul 20	10	7.6
Jul 21	15	8.6
Jul 22	7	7.6
Jul 23	9	8.1
Jul 24	12	9.0
Jul 25	6	9.4
Jul 26	9	9.7
Jul 27	10	9.7
Jul 28	8	8.7
Jul 29	7	8.7
Jul 30	3	7.9
Jul 31	2	6.4

7-Day Average of Daily New Cases per 100K, by Age Group (Years)

Clark County, NV

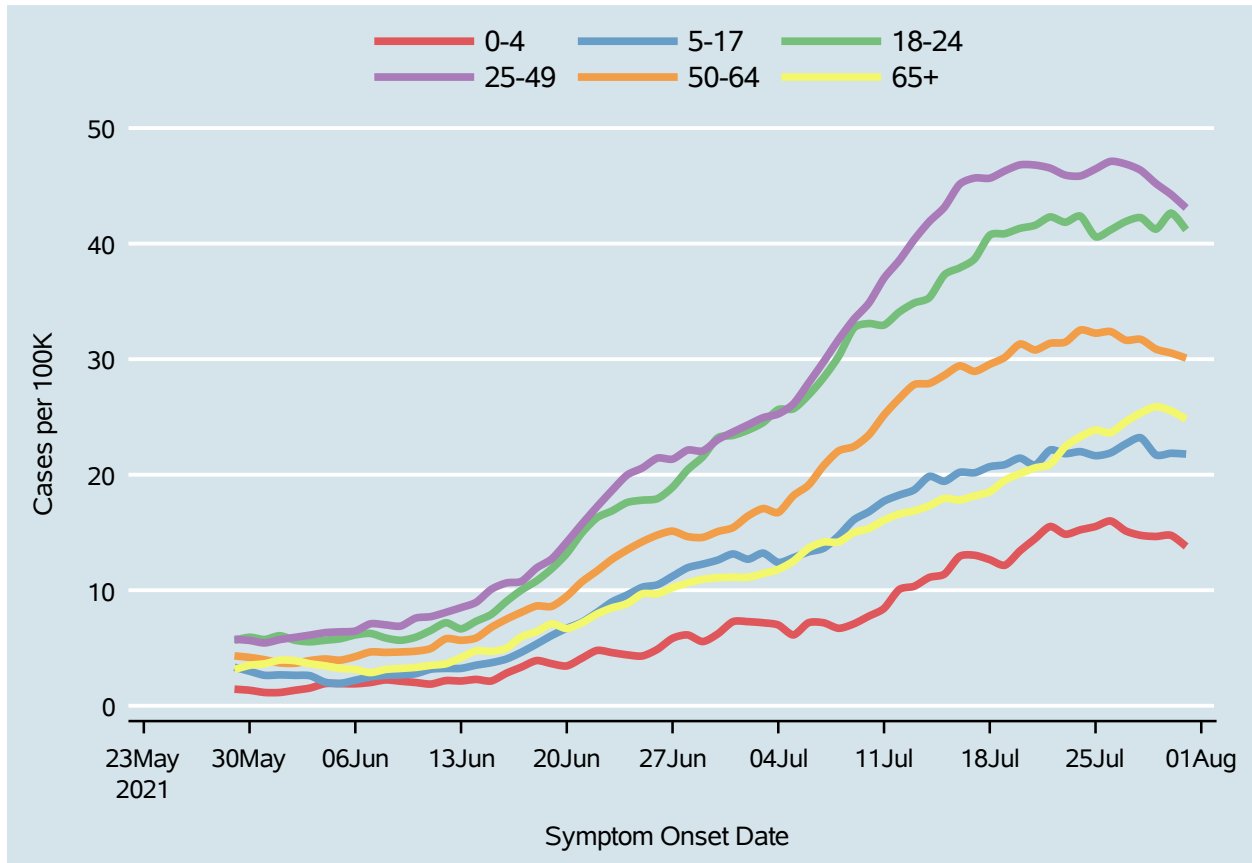
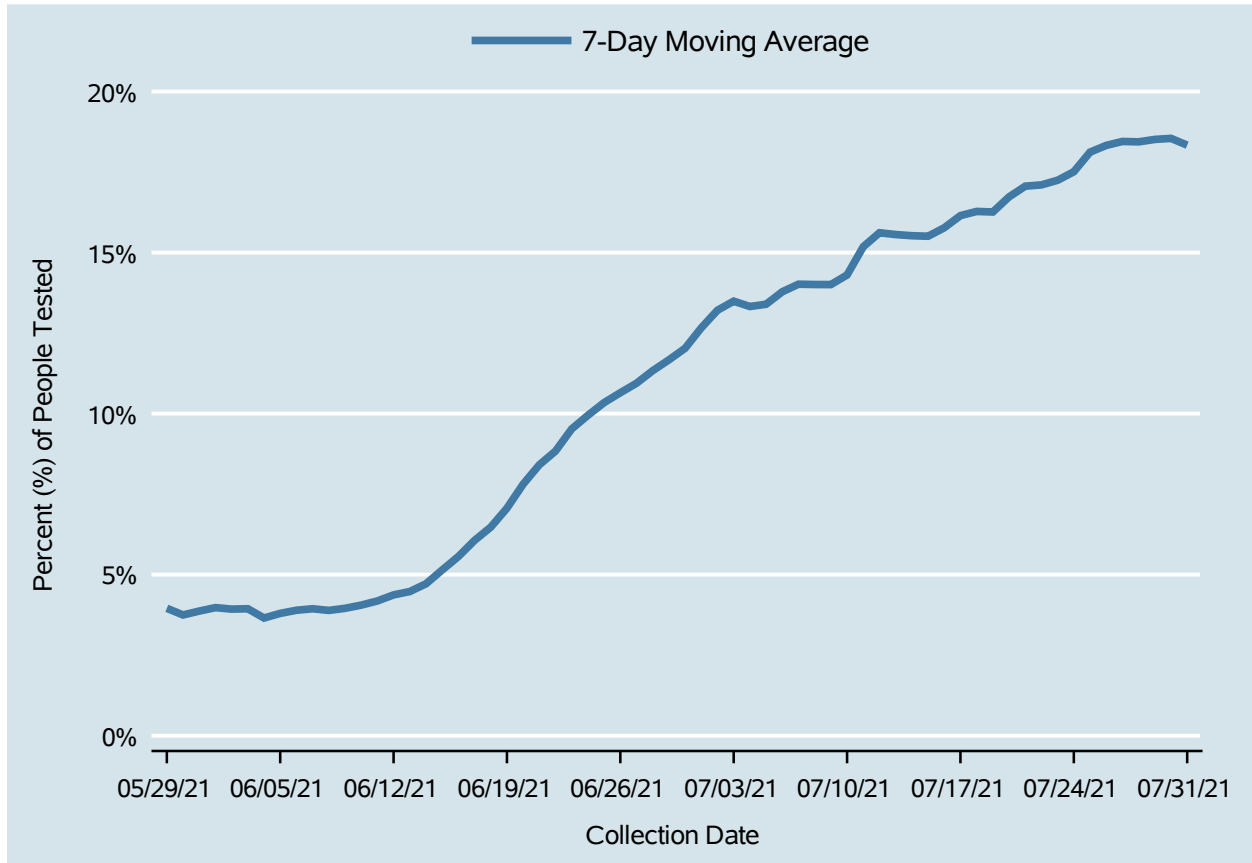


Table 4: 7-Day Average of Daily New Cases per 100K, by Age Group (Years)

Date	0-4	5-17	18-24	25-49	50-64	65+
Jul 18	12.6	20.7	40.7	45.7	29.6	18.5
Jul 19	12.2	20.9	40.9	46.3	30.2	19.5
Jul 20	13.4	21.4	41.3	46.8	31.3	20.1
Jul 21	14.5	20.8	41.6	46.8	30.8	20.6
Jul 22	15.5	22.1	42.3	46.5	31.4	20.9
Jul 23	14.8	21.8	41.8	45.9	31.5	22.4
Jul 24	15.2	22.0	42.4	45.9	32.5	23.3
Jul 25	15.5	21.6	40.6	46.5	32.3	23.9
Jul 26	16.0	21.9	41.2	47.1	32.4	23.6
Jul 27	15.1	22.7	41.9	46.9	31.6	24.6
Jul 28	14.7	23.2	42.2	46.3	31.7	25.3
Jul 29	14.7	21.7	41.3	45.2	30.9	25.9
Jul 30	14.7	21.9	42.6	44.3	30.5	25.5
Jul 31	13.8	21.8	41.2	43.1	30.1	24.8

Percent of People Receiving COVID-19 Viral Tests Who Have Positive Results

Clark County, NV



Report prepared by: Kellie Watkins, PhD, MS, Ying Zhang, PhD, MPH (Office of Epidemiology) and Lei Zhang, MS (Office of Informatics)