

COVID-19 Trends

Clark County, Nevada

Document creation date: August 2, 2021

- **General notes:** This report uses surveillance data collected by the Southern Nevada Health District. Due to delays related to laboratory processing, reporting, and case investigations, data from the most recent days are less complete than data from older time points. For this reason, as of June 10, 2020 this report will not display data from the previous three days prior to the date that the report was created. As many case investigations are ongoing, all data presented in this report are considered preliminary and subject to change. Data regarding cases, hospitalizations, deaths, and labs were last updated August 2, 2021 at 12:00 AM, and data is reported up through July 29, 2021.
- **Cases:** Symptom onset date was used for aggregating cases. If symptom onset date was missing, the following dates were substituted in this order: diagnosis date, lab collection date, report date (date case was reported to SNHD), event creation date (date case was entered into TriSano, SNHD's surveillance system).
- **Hospitalizations:** Admission date was used for aggregating hospitalizations. If admission date was missing, report date was substituted. If a person had more than one hospitalization after his/her COVID-19 diagnosis, only the first admission date was used.
- **Deaths:** Date of death was used for aggregating deaths. If date of death was missing, report date was used.
- For the "7-Day Average of Daily New Cases per 100K, by Age Group (Years)" graph and table, the population data source for calculating rate estimates was from Nevada State Demographer "2019 ASRHO Estimates and Projections Summary 2000 to 2038", 2020 projection, vintage 2019. Rates for individual age categories may be based on small numbers, which may give unstable estimates.
- All graphs in this report show data from approximately 60 days prior to the date of the report.
- All tables show data from the last 14 days before the current date, with the exception of the "Percent Change in Weekly Totals from Previous Week", which displays data from the previous eight completed weeks.
- For the "Percent of People Receiving COVID-19 Viral Tests Who Have Positive Results" graph, one person who has multiple specimens collected in one day is only reported once. If any of that person's tests are positive, that person counts as a positive result. If all of that individual's tests are negative, that person counts as a negative result. Laboratory tests were included if they were a test assessing for the presence of SARS-CoV-2 viral RNA, for example PCR tests. Antibody tests were excluded.

COVID-19 Cases

Clark County, NV

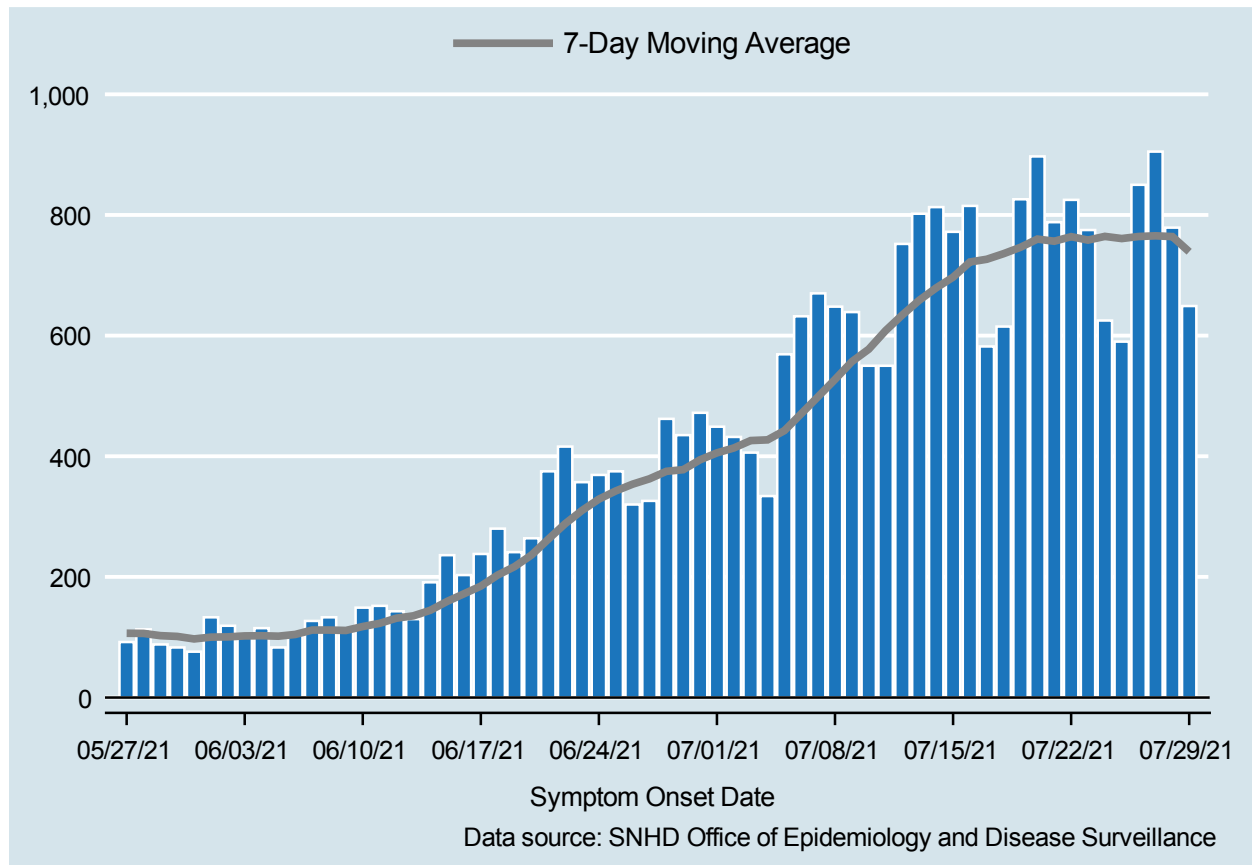


Table 1: COVID-19 Cases per Day, Clark County, NV

Date	Cases Per Day	7-Day Moving Average
JUL 16	815	722.0
JUL 17	582	726.6
JUL 18	615	735.9
JUL 19	826	746.4
JUL 20	897	760.0
JUL 21	788	756.4
JUL 22	825	764.0
JUL 23	775	758.3
JUL 24	625	764.4
JUL 25	590	760.9
JUL 26	850	764.3
JUL 27	905	765.4
JUL 28	779	764.1
JUL 29	649	739.0

COVID-19 Hospitalizations

Clark County, NV

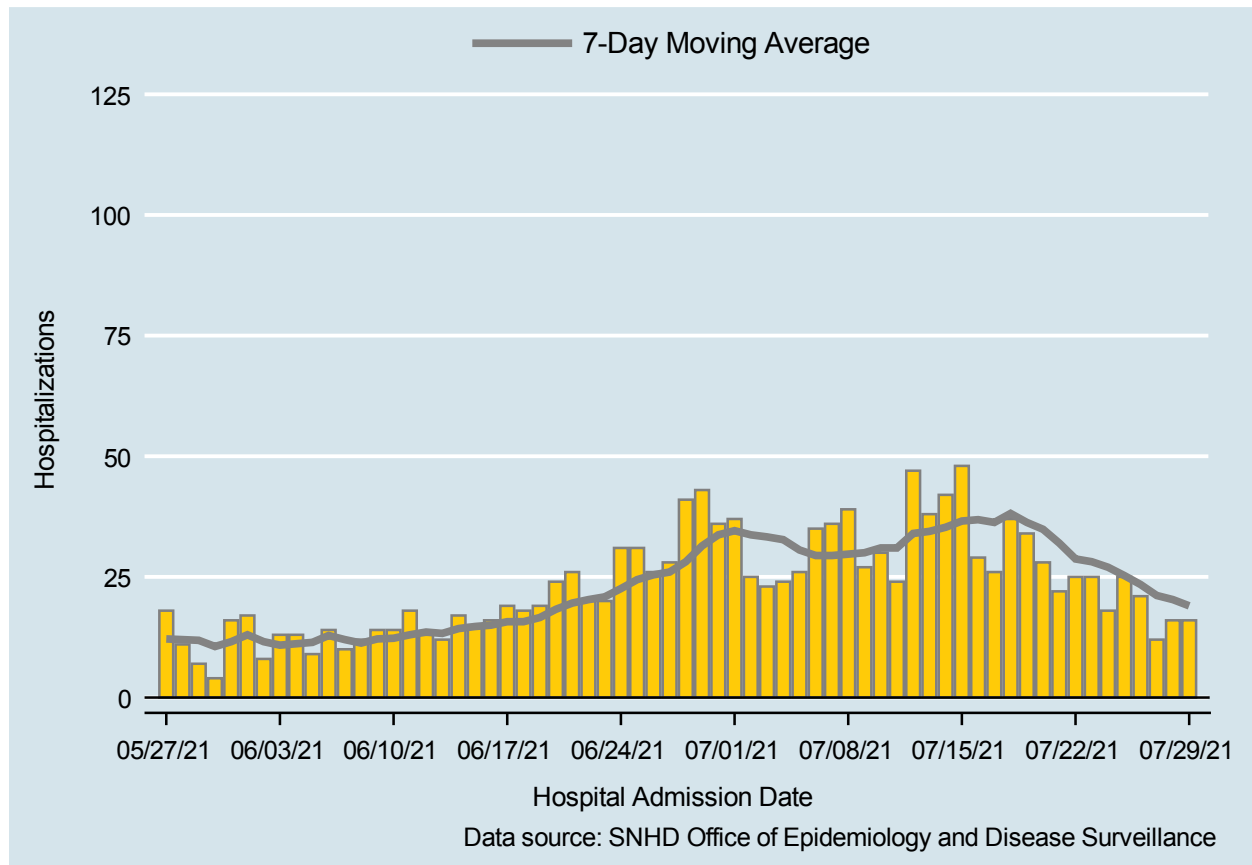


Table 2: COVID-19 Hospitalizations per Day, Clark County, NV

Date	Hospitalizations Per Day	7-Day Moving Average
JUL 16	29	36.9
JUL 17	26	36.3
JUL 18	37	38.1
JUL 19	34	36.3
JUL 20	28	34.9
JUL 21	22	32.0
JUL 22	25	28.7
JUL 23	25	28.1
JUL 24	18	27.0
JUL 25	25	25.3
JUL 26	21	23.4
JUL 27	12	21.1
JUL 28	16	20.3
JUL 29	16	19.0

COVID-19 Deaths

Clark County, NV

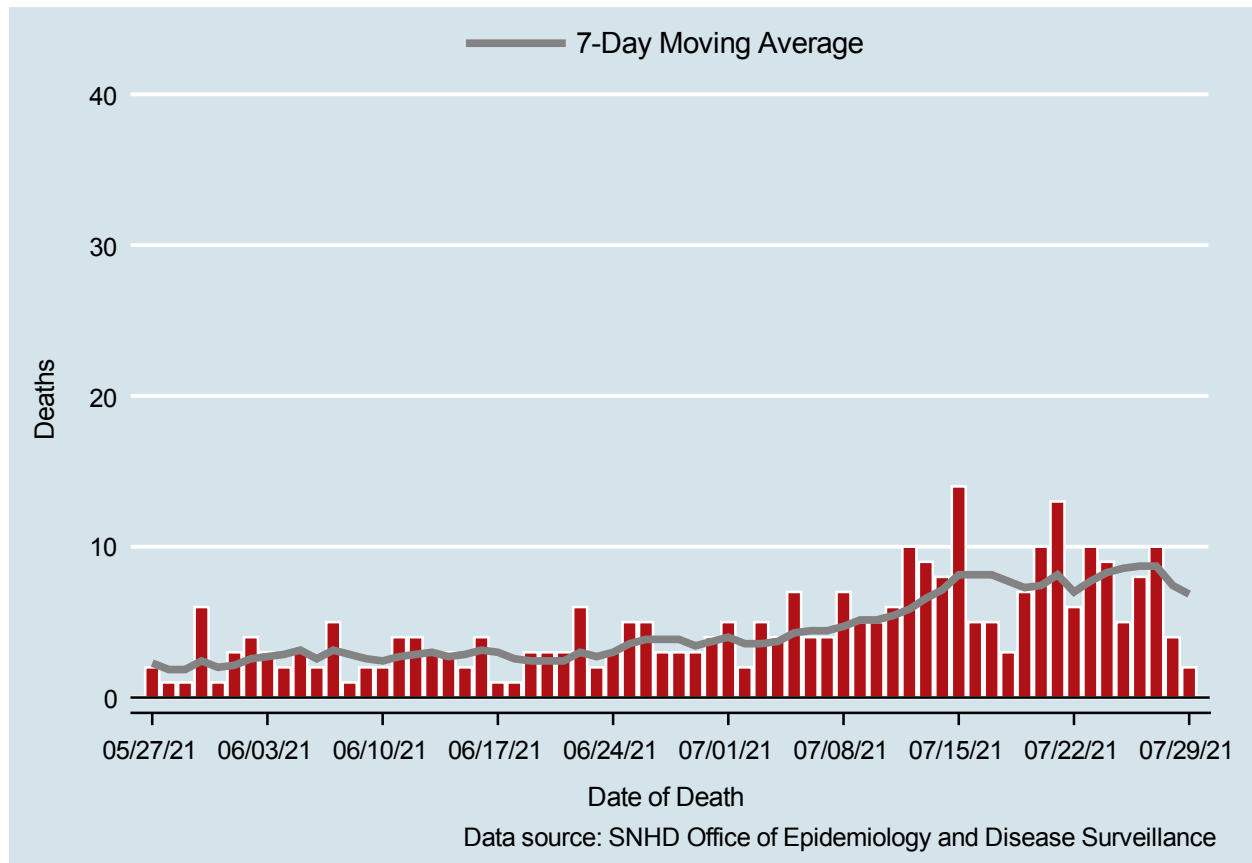


Table 3: COVID-19 Deaths per Day, Clark County, NV

Date	Deaths Per Day	7-Day Moving Average
JUL 16	5	8.1
JUL 17	5	8.1
JUL 18	3	7.7
JUL 19	7	7.3
JUL 20	10	7.4
JUL 21	13	8.1
JUL 22	6	7.0
JUL 23	10	7.7
JUL 24	9	8.3
JUL 25	5	8.6
JUL 26	8	8.7
JUL 27	10	8.7
JUL 28	4	7.4
JUL 29	2	6.9

7-Day Average of Daily New Cases per 100K, by Age Group (Years)

Clark County, NV

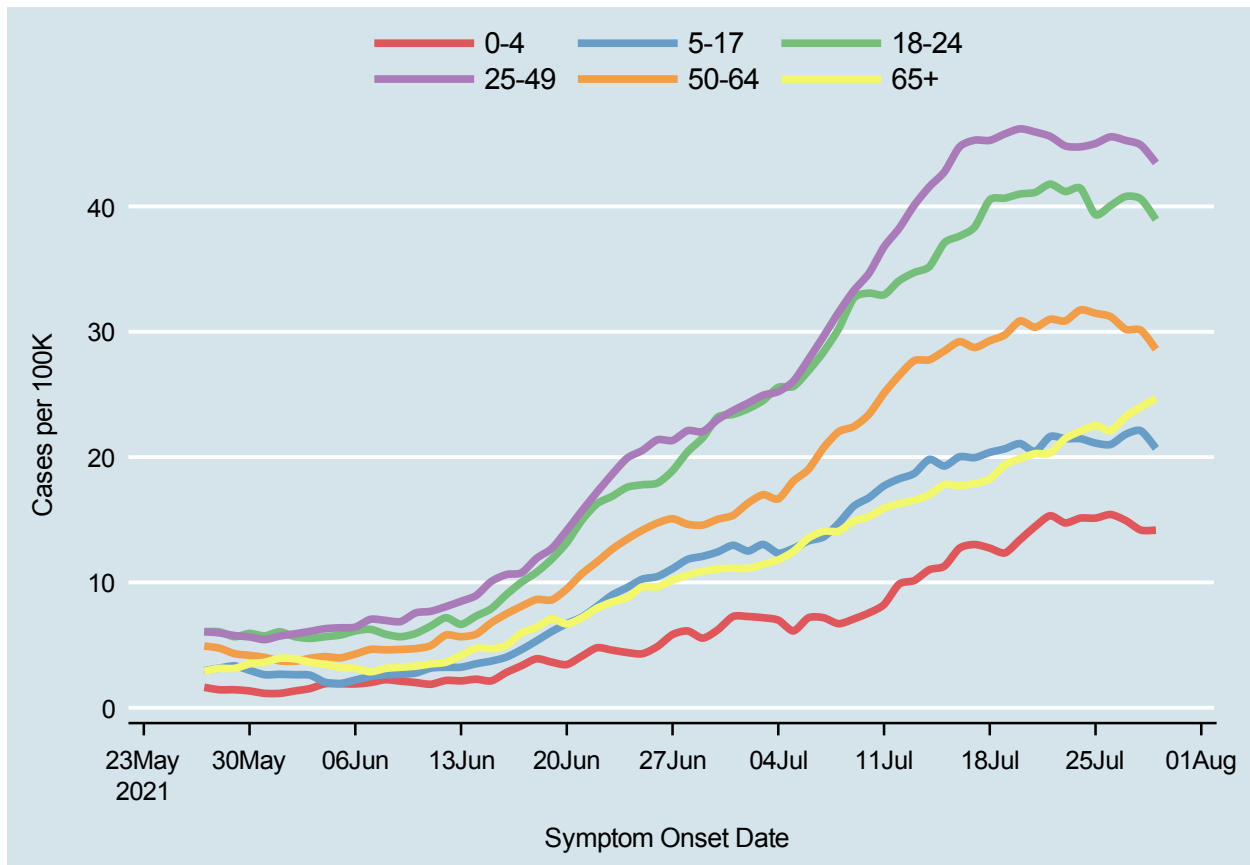
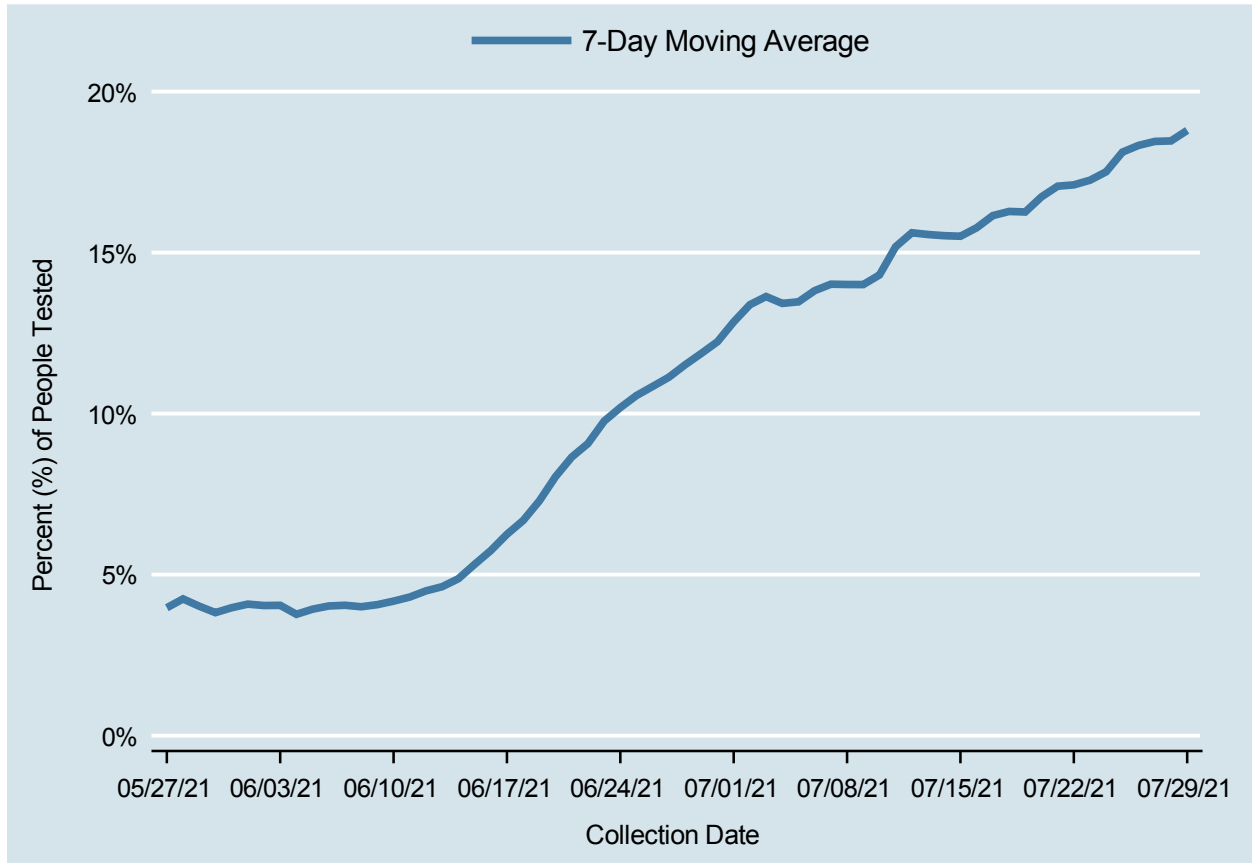


Table 4: 7-Day Average of Daily New Cases per 100K, by Age Group (Years)

Date	0-4	5-17	18-24	25-49	50-64	65+
JUL 16	12.7	20.0	37.6	44.8	29.2	17.7
JUL 17	13.0	20.0	38.4	45.3	28.7	17.9
JUL 18	12.7	20.4	40.5	45.3	29.3	18.3
JUL 19	12.4	20.7	40.7	45.8	29.8	19.4
JUL 20	13.4	21.1	41.0	46.2	30.9	19.9
JUL 21	14.5	20.4	41.1	45.9	30.4	20.3
JUL 22	15.3	21.6	41.8	45.6	31.0	20.3
JUL 23	14.7	21.5	41.2	44.8	30.9	21.5
JUL 24	15.1	21.5	41.5	44.8	31.7	22.1
JUL 25	15.1	21.1	39.3	45.0	31.5	22.5
JUL 26	15.4	21.0	40.1	45.6	31.2	22.1
JUL 27	14.9	21.8	40.8	45.3	30.2	23.2
JUL 28	14.2	22.1	40.6	44.9	30.1	24.0
JUL 29	14.2	20.7	38.9	43.5	28.6	24.7

Percent of People Receiving COVID-19 Viral Tests Who Have Positive Results

Clark County, NV



Report prepared by: Kellie Watkins, PhD, MS, Ying Zhang, PhD, MPH, Kathryn Barker, MPH (Office of Epidemiology and Disease Surveillance) and Lei Zhang, MS (Office of Informatics)