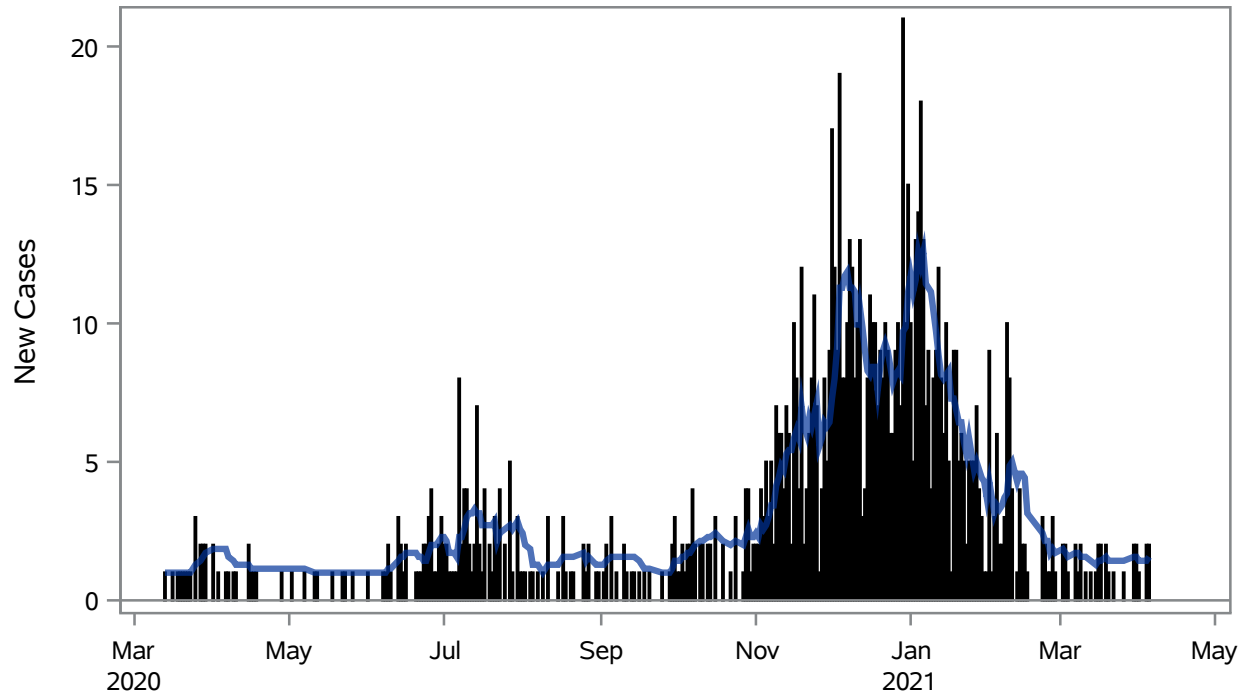


COVID19 Cases for Boulder City, 7-Day Moving Average



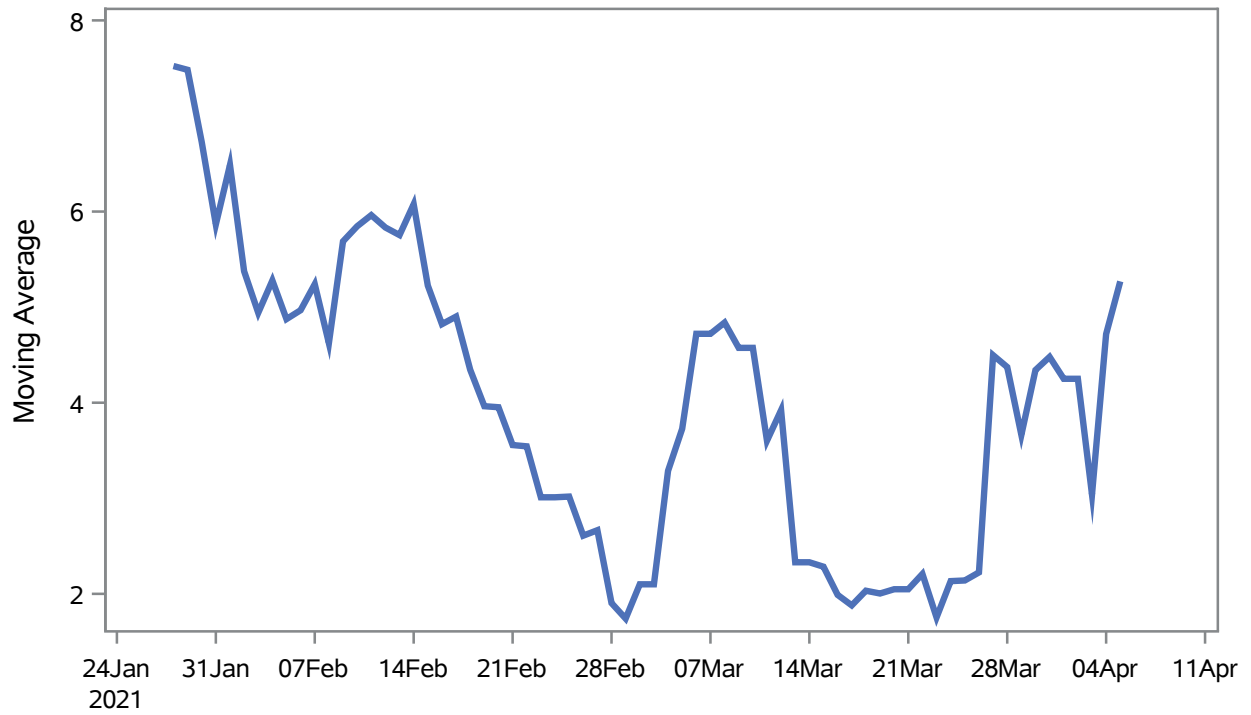
■ New Cases — 7-Day Moving Average

Investigations are ongoing; data are subject to change.

Reporting through 07APR2021

Boulder City zip codes include 89005.

Percent of People Receiving COVID-19 Viral Tests Who Have Positive Results in Boulder City



Investigations are ongoing; data are subject to change.

Reporting through 07APR2021

Boulder City zip codes include 89005.

Table 1: Age and COVID19 in Boulder City

Case Status	Age Categories	N	%	Population	Rate per 100,000
Cases	Aged 4 or less	9	0.9	659	--
	Aged 5 to 17	70	6.9	2,123	3297.2
	Aged 18 to 24	95	9.4	921	10315
	Aged 25 to 49	345	34.2	3,509	9831.9
	Aged 50 to 64	244	24.2	3,701	6592.8
	Aged 64+	247	24.5	4,767	5181.5
Hospitalizations	Aged 18 to 24	1	1.3	921	--
	Aged 25 to 49	3	3.9	3,509	--
	Aged 50 to 64	19	25.0	3,701	513.37
	Aged 64+	53	69.7	4,767	1111.8
Deaths	Aged 50 to 64	7	13.5	3,701	--
	Aged 64+	45	86.5	4,767	943.99

Note1: Population data source for calculating rate estimates: U.S. Census Bureau, ACS 5-year estimate.

Note2: Rates for categories with fewer than 12 cases are suppressed due to high relative standard error.

Note3: Hospitalizations are regardless of deceased status; Deaths are regardless of hospitalization status

**Investigations are ongoing; data are subject to change.
Reporting through 07APR2021
Boulder City zip codes include 89005.**

Table 2: Race/Ethnicity and COVID19 in Boulder City

Case Status	Race Ethnicity Categories	N	%	Population	Rate per 100,000
Cases	Hispanic	71	7.0	1,164	6099.7
	White	684	67.7	13,569	5040.9
	Black	--	--	51	--
	Asian	--	--	199	6532.7
	American Indian/Alaskan Native	--	--	140	--
	Native Hawaiian/Pacific Islander	--	--	32	--
	Unknown	229	22.7	.	.
Hospitalizations	Hispanic	7	9.2	1,164	--
	White	62	81.6	13,569	456.92
	Asian	--	--	199	--
	Unknown	6	7.9	.	.
Deaths	Hispanic	1	1.9	1,164	--
	White	51	98.1	13,569	375.86

Note1: Population data source for calculating rate estimates: U.S. Census Bureau, ACS 5-year estimate.

Note2: Rates for categories with fewer than 12 cases are suppressed due to high relative standard error. Counts for categories with population less than 500 are suppressed for confidentiality.

Note3: Due to suppression, the total counts per case status may not equal expected totals.

Note4: Hospitalizations are regardless of deceased status; Deaths are regardless of hospitalization status

**Investigations are ongoing; data are subject to change.
Reporting through 07APR2021
Boulder City zip codes include 89005.**