



COVID-19 Trends

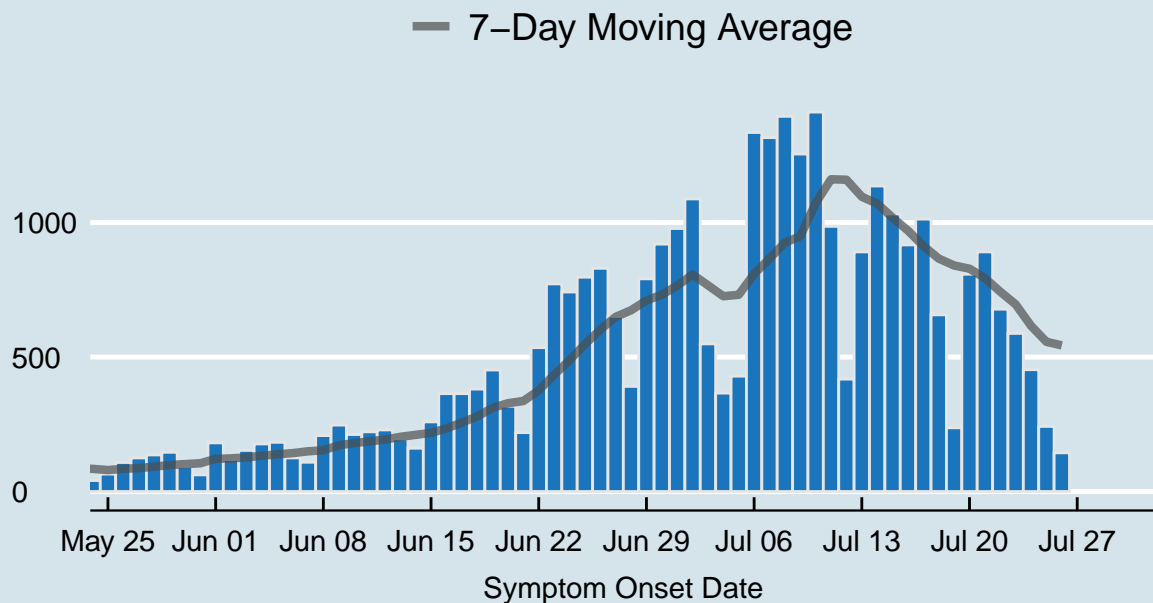
Clark County, Nevada

Document creation date: July 30, 2020

- General notes: This report uses surveillance data collected by the Southern Nevada Health District. Due to delays related to laboratory processing, reporting, and case investigations, data from the most recent days are less complete than data from older time points. For this reason, as of June 10, 2020 this report will not display data from the previous three days prior to the date that the report was created. As many case investigations are ongoing, all data presented in this report are considered preliminary and subject to change. Data regarding cases, hospitalizations, deaths, and labs were last updated July 30 at 12:00 AM, and data is reported up through July 26, 2020.
- Cases: Symptom onset date was used for aggregating cases. If symptom onset date was missing, the following dates were substituted in this order: diagnosis date, lab collection date, report date (date case was reported to SNHD), event creation date (date case was entered into TriSano, SNHD's surveillance system).
- Hospitalizations: Admission date was used for aggregating hospitalizations. If admission date was missing, report date was substituted. If a person had more than one hospitalization after his/her COVID-19 diagnosis, only the first admission date was used.
- Deaths: Date of death was used for aggregating deaths. If date of death was missing, report date was used.
- For the "7-Day Average of Daily New Cases per 100K, by Age Group (Years)" graph and table, the population data source for calculating rate estimates was the "2019 ASRHO Estimates and Projections Summary for 2020, Office of the State Demographer for Nevada." Rates for individual age categories may be based on small numbers, which may give unstable estimates.
- All graphs in this report show data from approximately 60 days prior to the date of the report.
- All tables show data from the last 14 days before the current date.
- For the "Percent of People Receiving COVID-19 Viral Tests Who Have Positive Results" graph, one person who has multiple specimens collected in one day is only reported once. If any of that person's tests are positive, that person counts as a positive result. If all of that individual's tests are negative, that person counts as a negative result. Laboratory tests were included if they were a test assessing for the presence of SARS-CoV-2 viral RNA, for example PCR tests. Antibody tests were excluded.

COVID-19 Cases

Clark County, NV



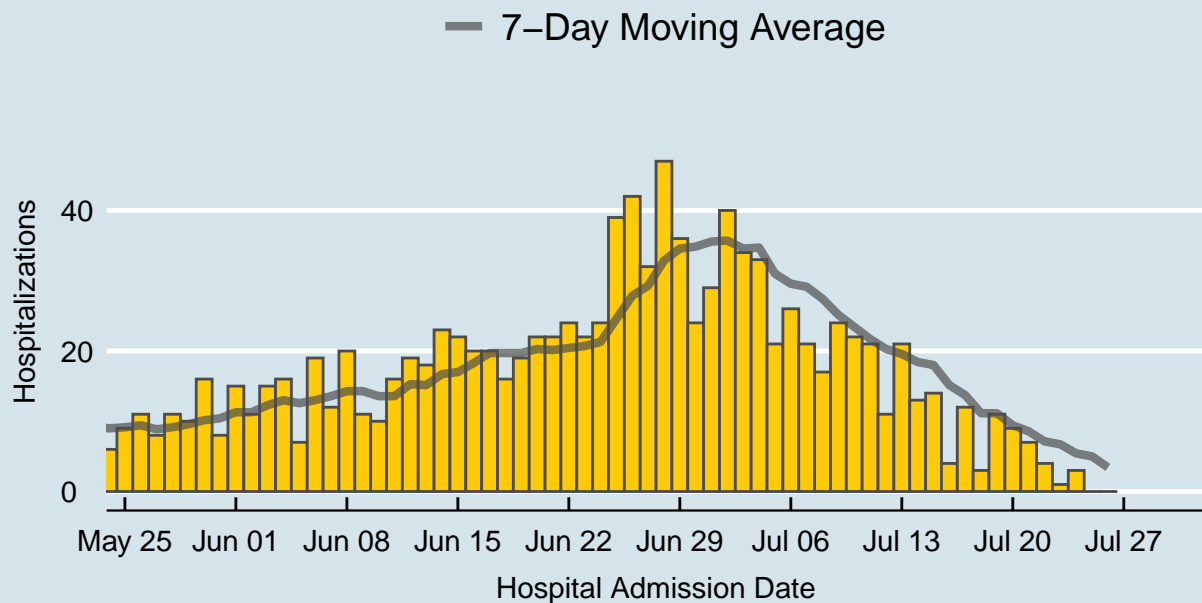
Data source: SNHD Office of Epidemiology and Disease Surveillance

Table 1: COVID-19 Cases per Day, Clark County, NV

Date	Cases per Day	7-Day Moving Average
Jul 13	891	1096.0
Jul 14	1136	1070.3
Jul 15	1032	1018.4
Jul 16	917	970.1
Jul 17	1013	913.3
Jul 18	657	866.3
Jul 19	237	840.4
Jul 20	808	828.6
Jul 21	891	793.6
Jul 22	678	743.0
Jul 23	588	696.0
Jul 24	453	616.0
Jul 25	242	556.7
Jul 26	144	543.4

COVID-19 Hospitalizations

Clark County, NV



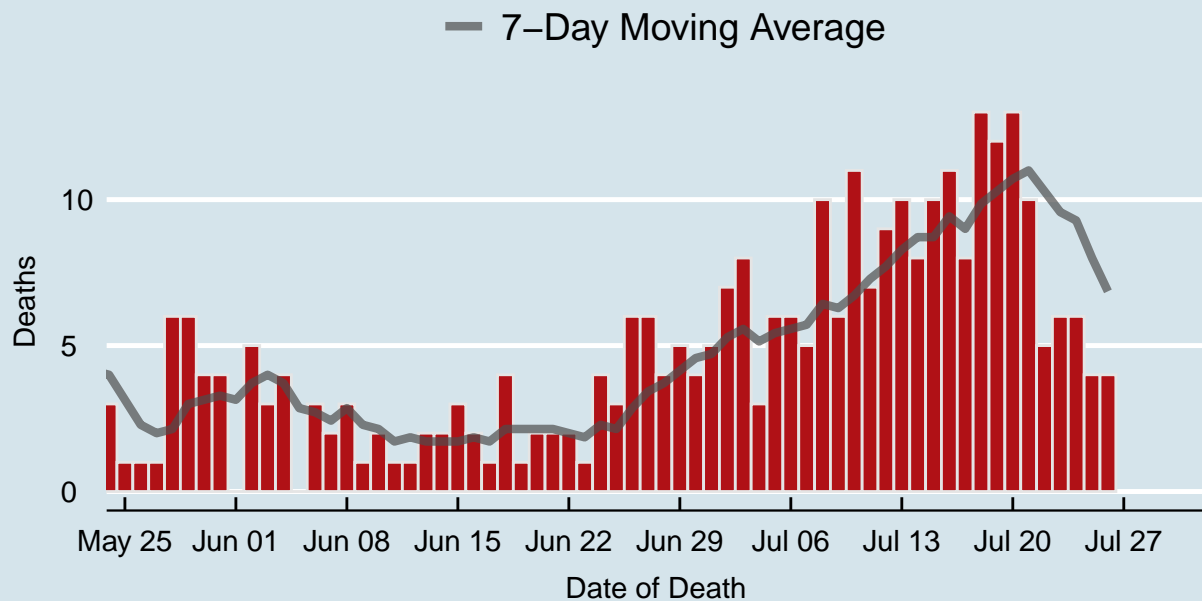
Data source: SNHD Office of Epidemiology and Disease Surveillance

Table 2: COVID-19 Hospitalizations per Day, Clark County, NV

Date	Hospitalizations per Day	7-Day Moving Average
Jul 13	21	19.6
Jul 14	13	18.4
Jul 15	14	18.0
Jul 16	4	15.1
Jul 17	12	13.7
Jul 18	3	11.1
Jul 19	11	11.1
Jul 20	9	9.4
Jul 21	7	8.6
Jul 22	4	7.1
Jul 23	1	6.7
Jul 24	3	5.4
Jul 25	0	5.0
Jul 26	0	3.4

COVID-19 Deaths

Clark County, NV



Data source: SNHD Office of Epidemiology and Disease Surveillance

Table 3: COVID-19 Deaths per Day, Clark County, NV

Date	Deaths per Day	7-Day Moving Average
Jul 13	10	8.3
Jul 14	8	8.7
Jul 15	10	8.7
Jul 16	11	9.4
Jul 17	8	9.0
Jul 18	13	9.9
Jul 19	12	10.3
Jul 20	13	10.7
Jul 21	10	11.0
Jul 22	5	10.3
Jul 23	6	9.6
Jul 24	6	9.3
Jul 25	4	8.0
Jul 26	4	6.9

7-Day Average of Daily New Cases per 100K, by Age Group (Years)

Clark County, NV

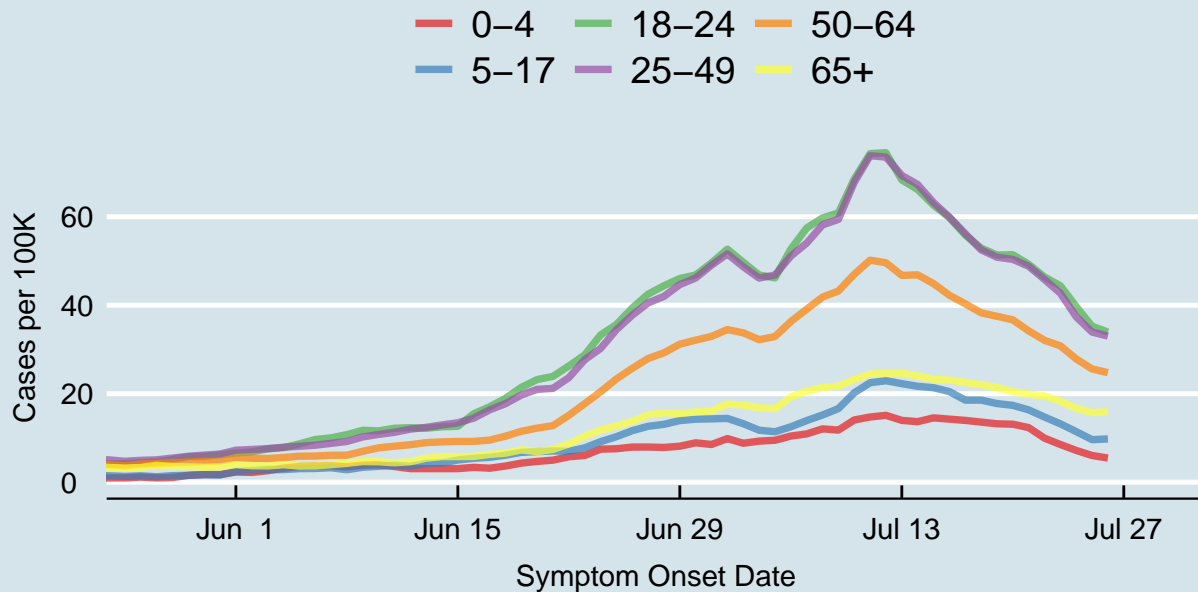
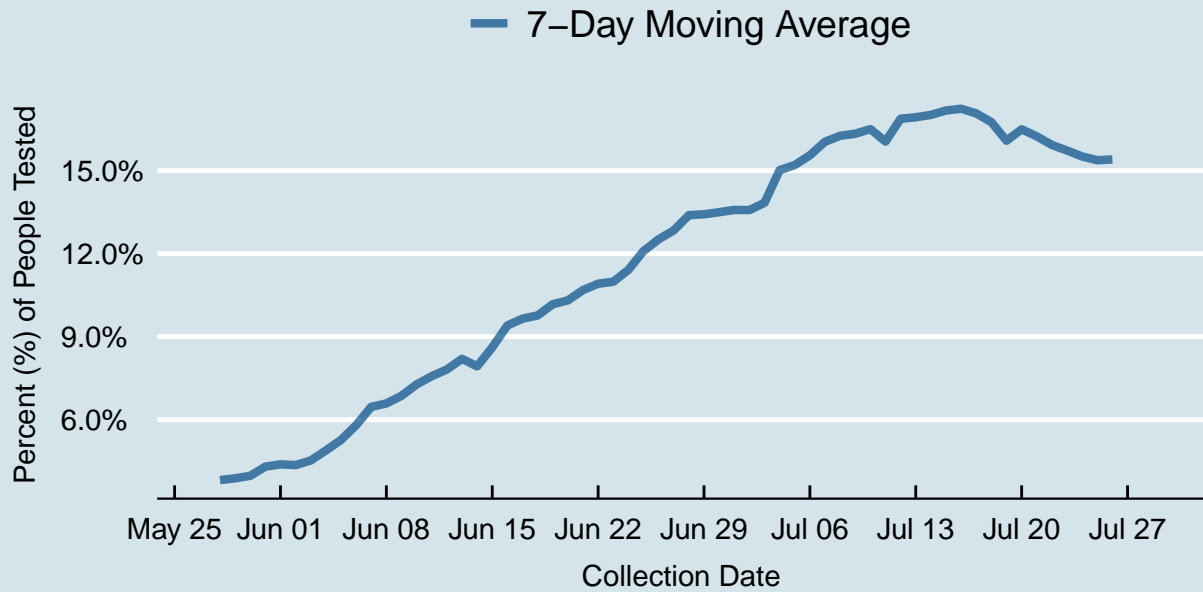


Table 4: 7-Day Average of Daily New Cases per 100K, by Age Group (Years)

Symptom Onset Date	0-4	5-17	18-24	25-49	50-64	65+
Jul 13	14.0	22.3	68.3	69.3	46.7	24.6
Jul 14	13.7	21.7	66.2	67.3	46.9	24.0
Jul 15	14.5	21.4	62.6	63.2	44.9	23.3
Jul 16	14.2	20.5	59.8	59.9	42.3	23.1
Jul 17	14.0	18.5	55.9	56.2	40.3	22.5
Jul 18	13.6	18.5	52.9	52.5	38.3	22.0
Jul 19	13.2	17.8	51.4	50.9	37.5	21.4
Jul 20	13.1	17.4	51.4	50.4	36.7	20.5
Jul 21	12.3	16.3	49.3	48.8	34.2	19.9
Jul 22	9.9	14.7	46.4	45.8	32.1	19.5
Jul 23	8.5	13.2	44.4	42.7	30.8	18.3
Jul 24	7.2	11.4	39.7	37.4	27.9	16.7
Jul 25	6.0	9.6	35.2	33.9	25.6	15.7
Jul 26	5.5	9.8	33.9	33.0	24.8	15.9

Percent of People Receiving COVID-19 Viral Tests Who Have Positive Results

Clark County, NV





Report prepared by: Kellie Watkins, PhD, MS, Ying Zhang, PhD, MPH (Office of Epidemiology and Disease Surveillance) and Lei Zhang, MS (Office of Informatics)