

COMMUNITY HEALTH ASSESSMENT UPDATE

Carmen Hua, MPH, CHES
Health Educator | CHA/CHIP Coordinator
Office of Disease Surveillance
Southern Nevada Health District
July 8, 2024

TABLE OF CONTENTS

- CHA/MAPP Review
- Community Status Assessment
Survey Launch
- Data and Demographics
- Timeline
- Closing & Next Steps



COMMUNITY HEALTH ASSESSMENT

What is it?

A systematic process involving the community to identify and analyze community health needs.

Why is it important?

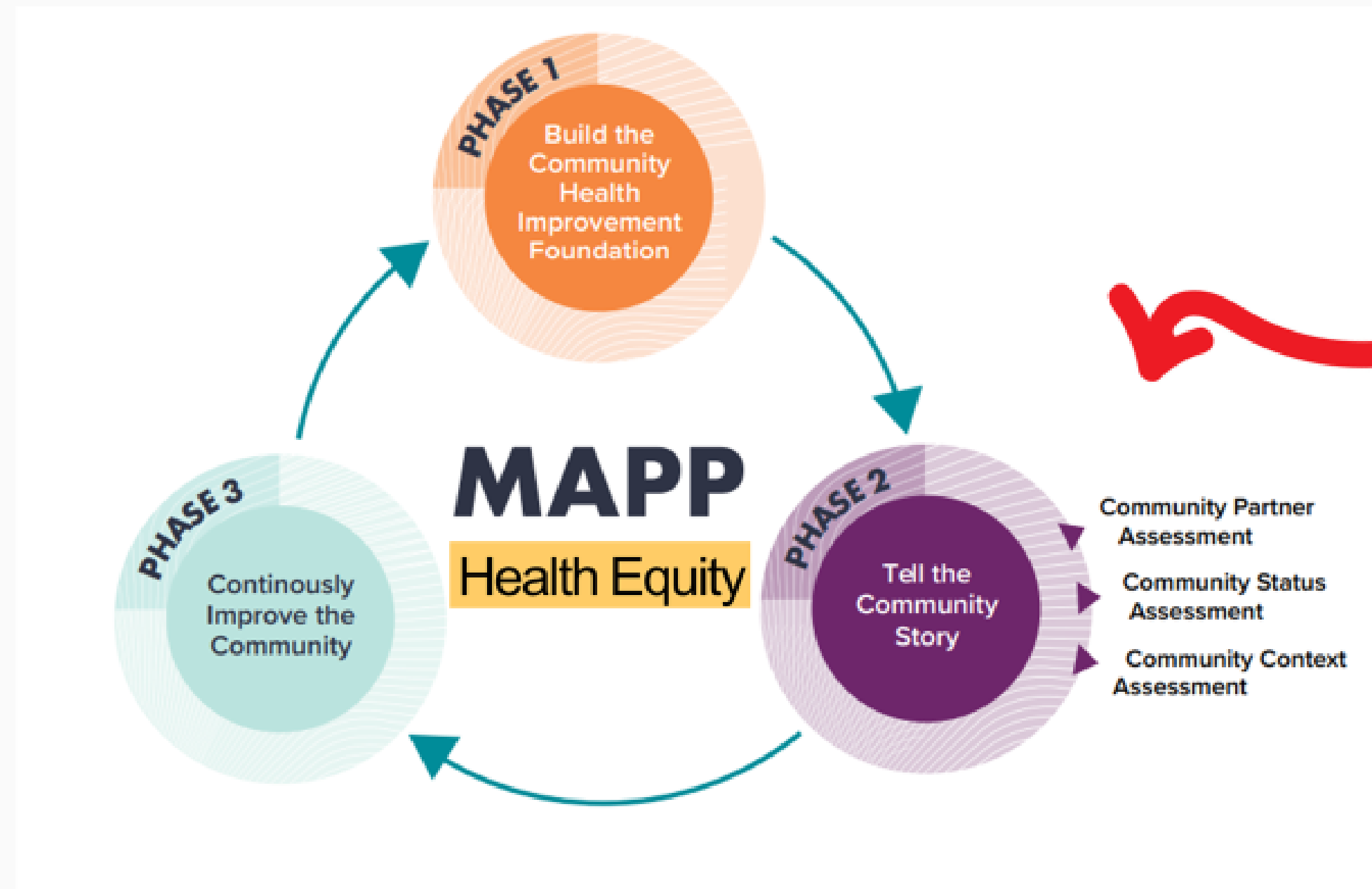
CHAs will allow the community to support improving health and the social determinants of health.

How is it used?

A process for determining the needs, or "gaps," between a current and desired outcome.



Mobilizing for Action through Planning and Partnerships (MAPP) Framework



This is where we currently are!

COMMUNITY STATUS ASSESSMENT SURVEY



[Link to the Survey](#)



UNLV

COMMUNITY HEALTH ASSESSMENT

TAKE THE SURVEY &
MAKE YOUR VOICE HEARD!

We want Clark County to be a
happier, healthier, and safer
environment for you.



<https://bit.ly/44xdFEK>



Learn more at
[HealthySouthernNevada.org](https://www.HealthySouthernNevada.org)

AVAILABLE IN



COMMUNITY HEALTH ASSESSMENT

EVALUACIÓN DE SALUD DE LA COMUNIDAD

我们希望倾听
您的意见!

TAKE THE SURVEY &
MAKE YOUR VOICE HEARD!

We want Clark County to be a
happier, healthier, and safer
environment for you.



<https://bit.ly/44xdFEK>

¡CONTESTE LA ENCUESTA Y
HAGA OÍR SU VOZ!

Queremos que el Condado de Clark
sea más *feliz, saludable y seguro*
para usted.



<https://rb.gy/dtsnfn>

您如何看待 Clark 县的医疗保健服务?
您希望改变些什么?

请参与南内华达州卫生区的社区健康评估,
让我们了解您的想法!



<https://rb.gy/xlzd0n>



Learn more at
HealthySouthernNevada.org

Conozca más en
HealthySouthernNevada.org

www.HealthySouthernNevada.org

ENGLISH, SPANISH, AND CHINESE

GENERAL INFORMATION

- Exploration of upstream factors beyond health behaviors and outcome
- Ties to social determinants of health and systems of power, privilege, and oppression
- Focus on hearing from marginalized groups such as people of color, LGBTQ+ populations, migrants, those experiencing homelessness, and disabled people

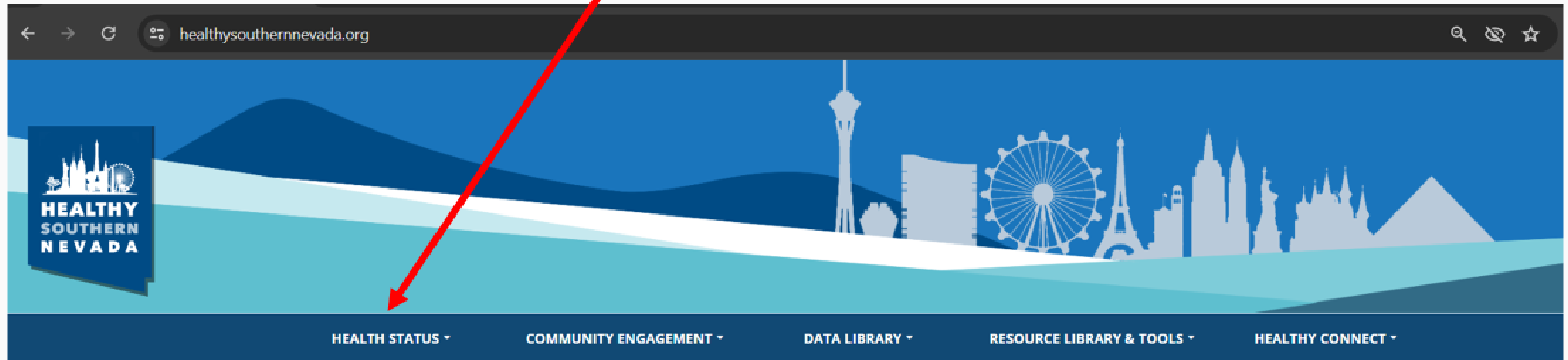
Survey Goal: 3,000

Open date range: May 15 – August 15

Eligibility: Clark County Resident, 18+



HealthySouthernNevada.org



What's New?





SURVEY PROGRESS TRACKER



Last Updated June 26, 2024. There may be a delay in reporting surveys filled out on paper.

2025 COMMUNITY STATUS ASSESSMENT

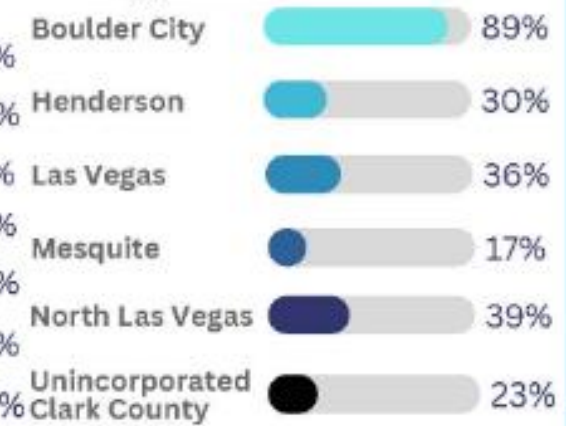
Progress Tracking



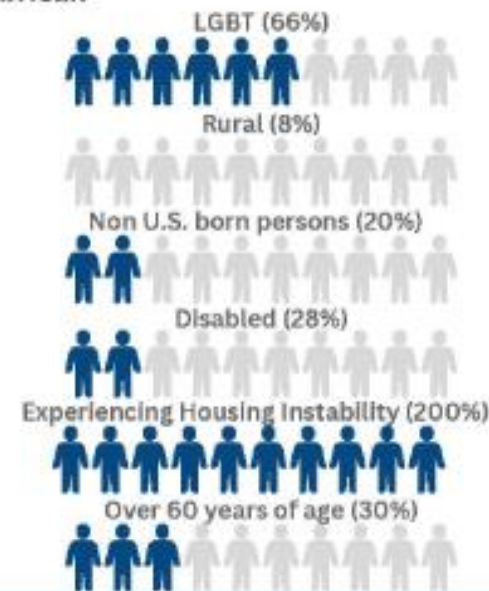
Race/ Ethnicity



City/ Jurisdiction



Middle Eastern/ Northern African*



*No target listed due to data unavailability

2025 CHA ROADMAP - Timeline

1 **NOVEMBER 2023**

Official CHA Cycle Begins

- Establish Steering Committee
- Gain Leadership Support



3 **MAY – JULY 2024**

Community Status Assessment (CSA)



5 **NOVEMBER - JANUARY 2025**

Data Analysis and Edits



2 **FEBRUARY – APRIL 2024**

Community Partner Assessment (CPA)

4 **AUGUST – OCTOBER 2024**

Community Context Assessment (CCA)

6 **MARCH 2025**

Publish CHA data reports, profiles, and update data dashboards

KEY PARTNERS AND EVENTS

- SNHD
- UNLV NICRP
- Dignity Health
- Intermountain Health
- Puentes
- RTC
- Touro University
- City of Las Vegas
- Governor's Office
- Three Square
- Clark County Library District
- American Heart Association
- PACT Coalition
- Clark County Parks and Rec
- YMCA
- CARE Coalition

- Nevada Office of Minority Health and Equity
- The Center
- United Citizens Foundation
- Helping Hands
- Touro University
- Strategies 360
- City of Henderson
- Nevada Center for Excellence in Disabilities
- There is No Hero in Heroin
- Las Vegas Play Therapy
- Nevada Homeless Alliance
- SCAN Health
- Nevada State University
- Las Vegas Rescue Mission

- North Las Vegas Library (Alexander, Aliante, and City Hall) Tabling Outreaches
- SNHD Tabling and Health Cards Line Outreach
- Juneteenth ELEVATE
- Juneteenth Festival Celebration
- East Las Vegas Library PHC Pop-Up
- World Refugee Day
- Health And Wellness Event
- Family Connect Event
- Linkage 2 Action Outreach
- Puentes and Siegel Cares Health Fair
- SNDH RTC Pop-Up Produce Stands Bonneville Transit Center
- ONE APIA Nevada Event
- & much more!



HOW CAN YOU ASSIST?

Spread the Word

- Take the Survey!
- Encourage friends, families, and colleagues to take the survey
- Share survey and flyers with all populations
- Promote on social media (promotional toolkit available on HSN website)
- Inform us on community events for outreach opportunities





NEXT STEPS

- Take the Survey - **every voice matters!**
- Monthly Status Meetings (Virtual) 2-2:30 PM
 - June 10, July 8, August 5
- Weekly Email Updates
- Reminder: Survey closes August 15
- If you are interested in handing out flyers, distributing physical surveys - please reach out to huac@SNHD.org



THANK YOU!

For questions/comments regarding survey:

- Amanda Deloye-Haboush, Amanda.Haboush@unlv.edu
- Tamera Travis, travis@SNHD.org

For questions/comments regarding Community Health Assessment process:

- Carmen Hua, huac@SNHD.org
- HealthySouthernNevada.org

