



LAS VEGAS, NV ★ SEPT 30 - OCT 2

ROUTE 91

HARVEST

COUNTRY MUSIC FESTIVAL

**1 OCTOBER MASS CASUALTY
INCIDENT: EMERGENCY SUPPORT
FUNCTION 8-HEALTH AND MEDICAL, SNHD
SUPPORT AGENCY BRIEF FOR BOARD OF
HEALTH**

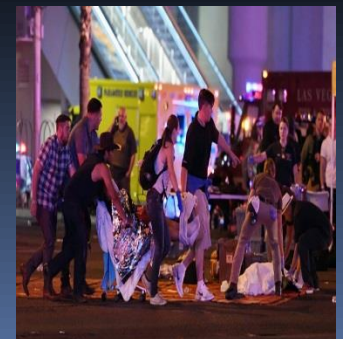
1 October 2017, MCI at Route 91 Music Event



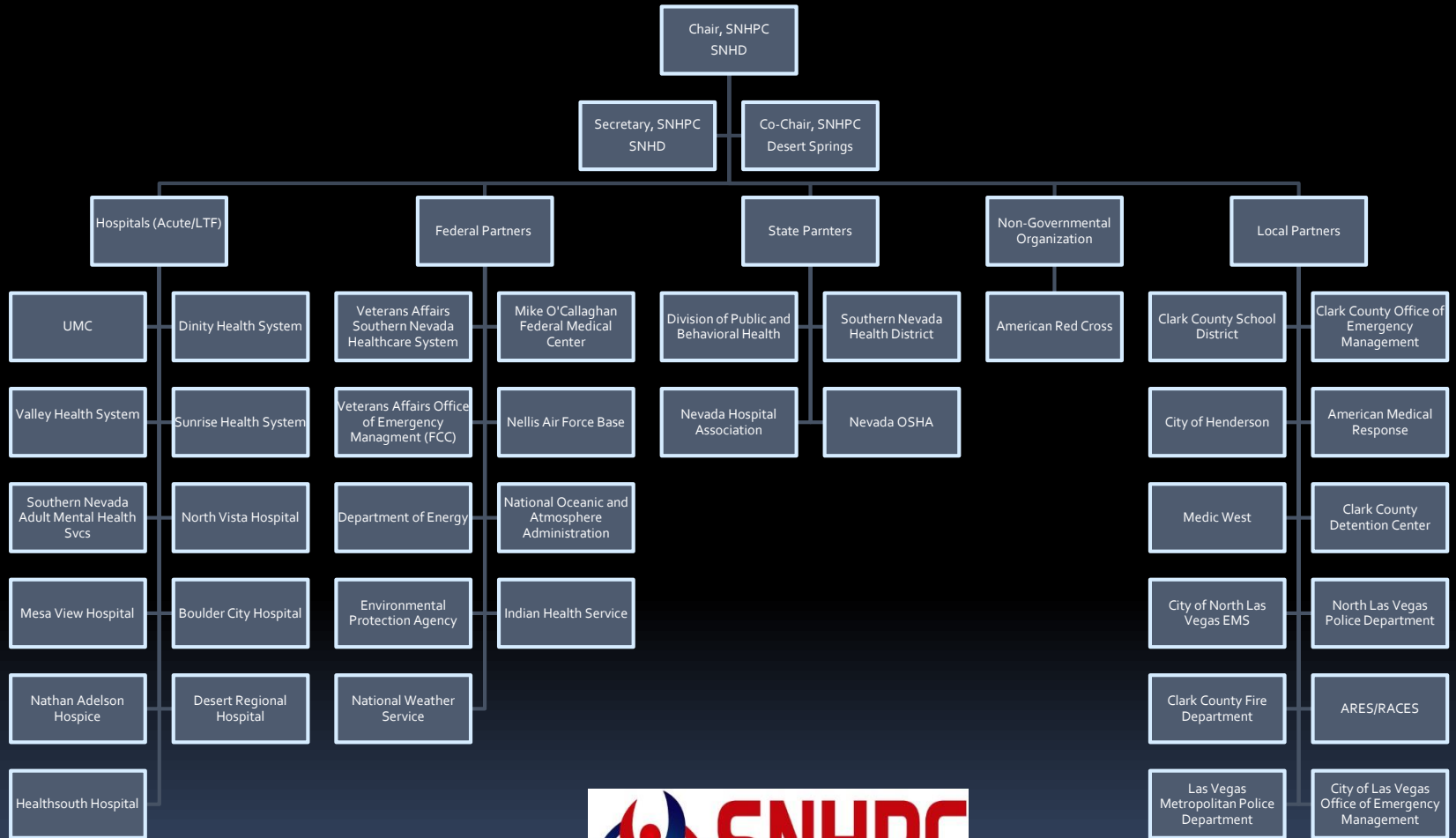
- Notification by CCOEM of MACC/MSAC activation following Mass Casualty Incident
 - Notifications made to SNHD Administration, OPHP staff and Healthcare Community Partners
 - OPHP staff report to MACC to staff Emergency Support Function 8-Health and Medical and Medical Surge Area Command
 - Ready to support requests for immediate resources

Multi-Agency Coordination Center, ESF-8 Health and Medical & Medical Surge Area Command support LE, Fire, EMS, Hospital Operations and provide information sharing

- Notification to Southern Nevada Healthcare Preparedness Coalition Member agencies to report to MSAC
 - Notification to Area Hospitals of MCI via EM Resource asking them to prepare for Surge and provide bed availability numbers.
 - Emergency All-Call notifications also completed by Fire Alarm Office to Emergency Departments



SNHPC member agencies staff Medical Surge Area Command at MACC

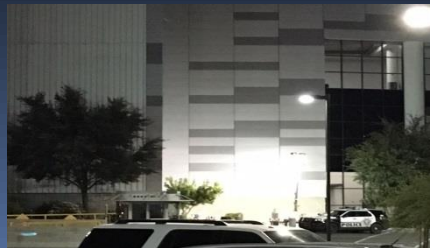


Southern Nevada Health District Resources utilized to support ESF-8 and MSAC at MACC

- MACC and MSAC supports Medical Surge and EMS Ops then CCOCME Family Assistance Center and LVMPD Operations through Patient Tracking
 - SNHD is Support Agency and OPHP serves in ESF-8 and MSAC
 - SNHD Administration supports ESF-8 with SNHD resources
 - SNHD PIO supports Joint Information Center at MACC
 - Medical Reserve Corps of Southern Nevada provides volunteers to support FAC and Call Center
 - SNHD EH supports FAC food preparation with LVVCA
 - SNHD Clinical Services supports Deployed Red Cross Volunteers providing Behavioral Health Ops at MGM
 - Epidemiology and Vital Records supports CCOCME
 - SNHD EMS reviews policies in case request for additional EMS personnel is made


October 2-3, 2017 Significant Events

- Family Reunification Center at UNLV Thomas and Mack for Route 91 attendees
- Governor declares a State of Emergency as well as a Public Health and Medical Emergency
- Joint Information Center established at MACC
- Family Assistance Center established at LVCA
- Personnel from Northern Nevada, Orlando and NYC requested to support CCOCME and FAC.





Ongoing Activities

- Family Assistance Center has transitioned to more long term, recovery services
 - SNHD staff continue to support recovery operations in multiple venues
 - OPHP staff is compiling a database of local mental health resources.
 - Epidemiology and Vital Records are continuing to assist CCOCME.
 - Community Health Director and OPHP staff are participating in the VSRC Steering Committee
 - MRC volunteers may also continue to be utilized to provide ongoing support for the center
- 

Vegas Strong Resiliency Center


- Clark County transitioned from the Family Assistance Center at the Convention Center to the Vegas Strong Resiliency Center (VSRC) on October 23rd.
 - Located at 1524 Pinto Ln, 2nd Floor
 - Hours of operation: 10:00 am to 7:00 pm
 - Services available:
 - Victim advocacy and support
 - Case management
 - Counseling and spiritual care referrals
 - Technical assistance with applying for services
 - Call center – 702-455-AIDE

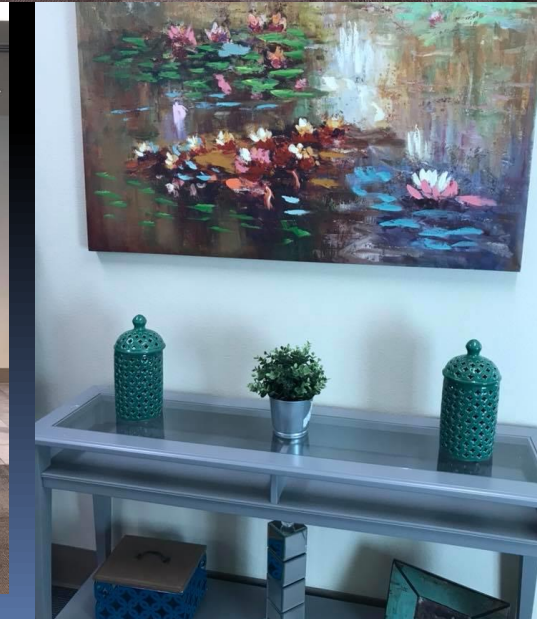
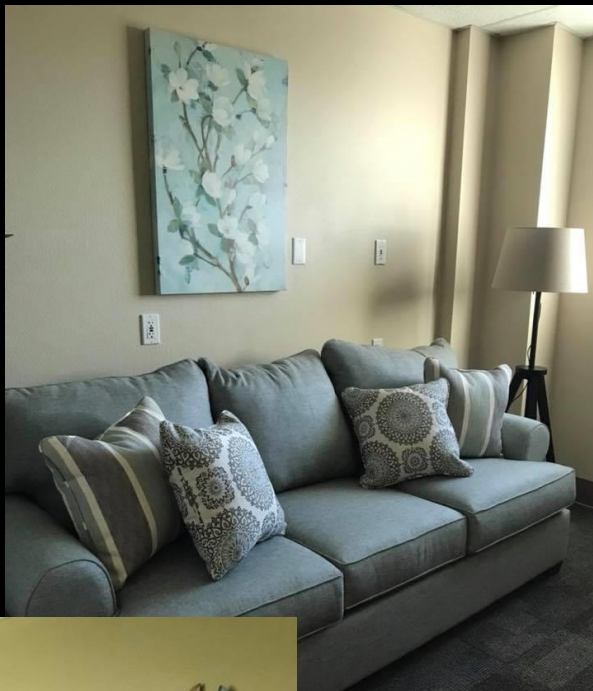
VSRC Steering Committee

- Multi-discipline committee:
 - Clark County Assistant County Manager
 - Clark County Office of Emergency Management
 - Clark County Social Services
 - Clark County Victim Assistance Center
 - Clark County Coroner
 - Southern Nevada Health District
 - State Department of Public and Behavioral Health
 - Mental Health
 - State Division of Emergency Management
 - Las Vegas Metropolitan Police Department
 - OVCTTAC
 - Compensation Director
 - VOCA Director



VSRC Subcommittees

- Responders Support Team Subcommittee
 - Provide outreach to First Responders, EMS, Hospital Staff, School District.
 - Finance Subcommittee
 - Maintain all documentation for future grant reimbursement
 - Identify additional sources of financial assistance
- 



THANK YOU TO ALL RESPONDERS



Special THANK YOU to Southern Nevada Community, Businesses, Nevada, and Country for out pouring of support.

